

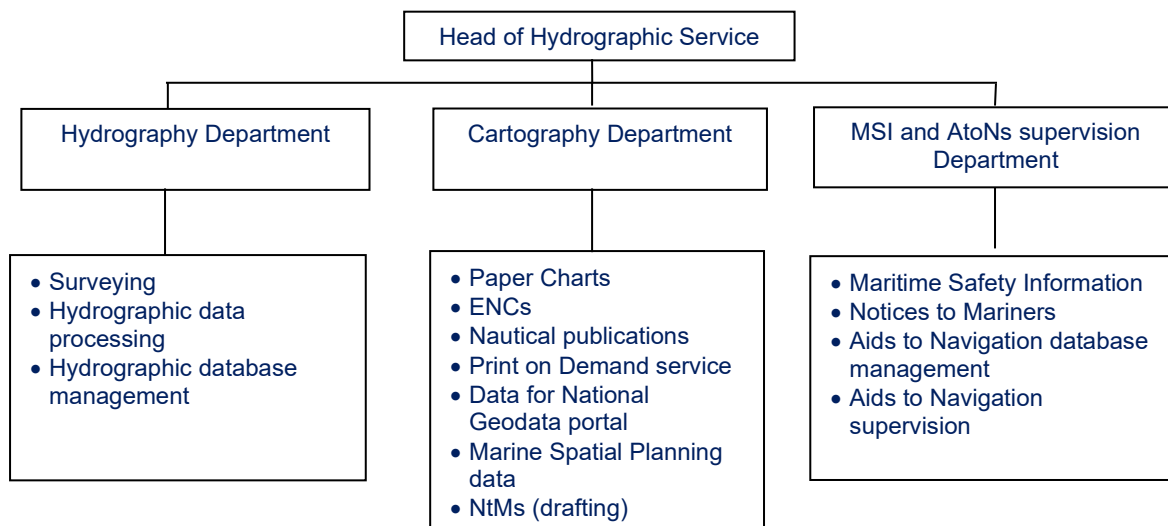
**Maritime Administration of Latvia**  
**Hydrographic Service**  
**National Report to Baltic Sea Hydrographic Commission**  
**2023**

**Executive summary**

The Report gives an overview of the main activities of Hydrographic Service of Maritime Administration of Latvia in the period of 2022-2023.

## 1. Hydrographic Service

Hydrographic Service (HS) is one of the Departments of the Maritime Administration of Latvia (MAL). MAL is a civil organisation - MAL is the State limited liability company supervised by the Ministry of Transport that fulfils functions according to the Law on Maritime Administration and Maritime Safety. HS organisational structure and main functions:



Marine Aids to navigation (AtoN) used for waterway marking and navigation assistance, are in conformity with the buoyage system for Region "A" of the International Association of Marine Aids to Navigation and Lighthouse Authorities (IALA). The Maritime Administration of Latvia organizes the establishment and general supervision of a system of the AtoN in Latvian waters.

The Cabinet has determined the technical requirements for the AtoN taking into account the requirements of international legal enactments (IALA), as well as the procedures for ensuring the operation of the AtoN, and the obligations and rights of the possessors of AtoN. All AtoN's within port area are managed by relevant port authorities, but outside port area territory of responsibility is divided among three major ports. It is prohibited to establish, remove or change any AtoN if the written consent of the Maritime Administration of Latvia has not been received in advance.

Information related to establishment or any changes in the operation of AtoN are promulgated in the same way as navigational warnings prescribed above

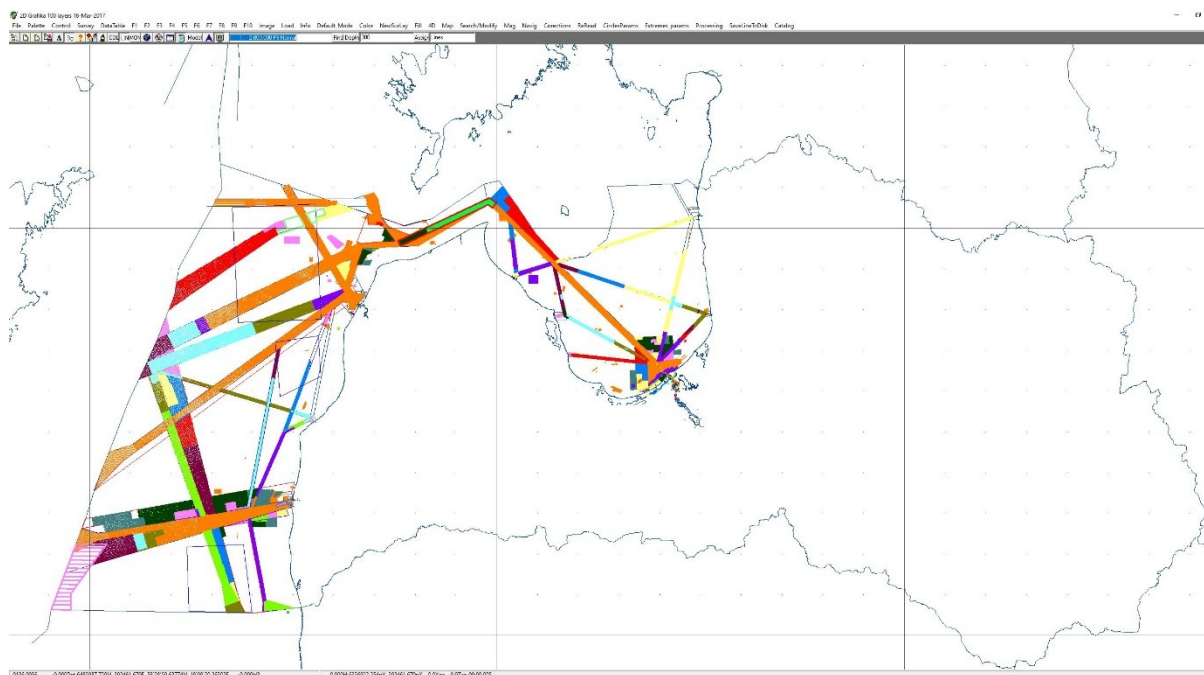
## 2. Hydrographic Surveys

MAL provided surveys according to HELCOM Hydrographic re-Survey plan for Baltic Sea and in port areas in 2022-2023. Surveys are carried out according the IHO S-44 standards. Survey data is processed and available for Hydrography and Cartography Departments via Hydrographic database.

Coverage of hydrographic surveys in 2023 (until September)

340.0 km<sup>2</sup> - on HELCOM routes in the Central Baltic and in the Gulf of Riga (CAT 2, CAT 3);

1.1 km<sup>2</sup>- Harbour areas



Surveyed areas: 2001 to 2012- orange, 2013-magenta, 2014-green, 2015- mid green, 2016-cyan, 2017-dark red, 2018-red, 2019-blue, 2020-yellow, 2021-pink, 2022-dark green, 2023-gray green.

### Survey vessels

The Hydrography Division (11 employees) provide surveying, data collecting and post-processing.

Hydrographic vessels owned by MAL:

Kristiāns Dāls - 19 m twin hull survey vessel;

Sonārs - 7.25 m single-hull survey boat for port and coastal areas survey;

Blessor 505 - 5.5 m single-hull survey-boat on rivers, port and shallow coastal areas;

(More detailed information on hydrographic vessels are given in Annex 1.)

### 3. New charts & updates

#### Paper Charts

Latvian waters are fully covered with the charts of relevant navigational bands. All paper charts are updated by monthly Notices to Mariners and available in Print on Demand (POD) system.

Status of the nautical charts within the limits of the Latvian EEZ:

Navigational Purpose/Scale	A Charts complying to IHO standard S-4 (Coverage %)	B Raster navigational charts complying IHO standard S-61 (Coverage %)	C ENCs (Coverage %)
Offshore passage/Small*	-	-	-
Landfall and Coastal passage/Medium	100	0	100
Approaches and Ports/Large	100	0	100
Percentage of Group A showing depths in metres	100		
Percentage of Group A referenced to a satellite datum	100		

\* Latvia has no offshore passage / small scale charts.  
See Annex 2 for detailed information on Chart and ENC coverage.

#### INT charts

MAL produces 22 paper charts, including 19 INT charts which covers most of the Latvian waters.

New editions of INT charts:

2022 (September – December) – 2 new editions.

2023 (January – August) – 5 new editions.

#### National charts

New editions of national charts (National paper charts are produced in accordance with IHO standard S-4 requirements):

2022 (September – December) – 0 new editions.

2023 (January – August) – 0 new editions.

#### ENCs

Latvia produces 26 ENCs in usages 2 to 6.

New editions / ENCs:

2022 (September – December) – 2 new ENCs (replacements).

2023 (January - August) – 1 new ENC (replacement).

Usage 2 (General) – 0;

Usage 3 (Coastal) – 0;

Usage 4 (Approach) – 1;

Usage 5 (Harbour) – 1.

Usage 6 (Berthing) – 1;

ENCs are updated on a monthly NtM basis. Temporary (T) and preliminary (P) notices to mariners are included into ENCs.

### **ENC distribution**

MAL has ENC distribution agreements with PRIMAR.

### **RNCs**

RNCs are not produced by MAL.

### **Other charts**

-

## **4. New publications & updates**

Nautical publications are updated monthly with Notices to Mariners and are available for download at MAL website. All digital copies of nautical publications are free of charge.

## **5. MSI**

### **Existing infrastructure for transmission.**

The promulgation of MSI (Maritime Safety Information) in Latvian waters is provided by the Maritime Administration of Latvia, as defined in SOLAS chapter IV (part of GMDSS) and in resolution A.705(17) on Promulgation of Maritime Safety Information. SOLAS regulations V/4 through V/7 govern the Contracting Government's responsibilities with regards to providing MSI. The Revised Joint IMO/IHO/WMO Manual on MSI, Publication S-53 (the Joint Manual on MSI), describes the provision of the service and the receiving methods in more detail.

Latvia is following the above mentioned requirements.

The National GMDSS VHF network is arranged along the coastline for provision of local Navigational Warnings. Service is provided by the Maritime Rescue Coordination Centre of the Latvian Naval Flotilla Coast Guard Service (MRCC Riga) twice per day in English and Latvian languages. Urgent Navigational Warnings are transmitted immediately upon reception and afterwards included in the next scheduled MSI messages.

NAVAREA I Baltic Sea Sub-Area Co-ordinator – Sweden, is responsible for NAVTEX Service over Latvian waters. Navigational Warnings and other messages for Latvian waters are transmitted by Swedish and/or Estonian transmitters.

The Maritime Administration of Latvia publishes Notices to Mariners monthly.

The first edition of Notices to Mariners edition is Shipping Regulations that contain updated information about Latvian ports, on reporting requirements, as well as maritime safety information.

### **New infrastructure in accordance with GMDSS Master Plan.**

Nothing to report.

## **6. C-55**

MAL is providing updates to IHO.

## **7. Capacity Building**

Currently MAL is participating in PRIMAR Task Force Project – testing and analysing S-57 ENC conversion to S-100.

## **8. Oceanographic activities**

None

## **9. Other activities**

### **INSPIRE directive**

In conformity with INSPIRE directive, MAL takes part in the geospatial data sharing through the Geoportal of Latvia, which is the hub to the INSPIRE Geoportal. MAL HS has already provided both - metadata and geospatial data sets to relevant authorities.

### **National Spatial Planning**

The Government of Latvia approved the National MSP on 14.05.2019.

### **IHO Working Groups**

MAL is participating in: NCWG, BSICCWG, TEWG, HSWG and BSHC.

## Annex 1

### Detailed information regarding hydrographic vessels.

#### Vessel KRISTIĀNS DĀLS.



**MMSI:** 275027000

**Call sign:** YLAD

**Home port:** Riga, reg.Nr. 0123

Twin-hull Al 19.8x6.7x1.3; GT 33t; DWT 9t

**Engine:** 2x165kW IVECO, aux.: NANNI DIESEL 4.220 20 kW

**Speed:** 11 knots

**Crew:** 4

**Autonomy:** 3 days

**Built:** 2001, FINLAND UUDENKAUPUNGIN TYOVENE OY.

**Nav. equipment:** Furuno FRS 1000 - radar/plotter/sounder , JLR-21 GPS Compass, Furuno VHF FM 8500 - radiotelephone

**Survey equipment:** Reson SeaBat 7101 multibeam echosounder, TRIMBLE GNSS SPS 855 with TRIMBLE GSM MSN 940 modem for RTK TRIMBLE VRS Now TEC corrections or Marinestar, Hemisphere Crescent VS110 GPS compass, Leica 530 RTK GPS, Octans EM 1000 motion sensor, SVP-15 sound velocity probe, GeoAcoustics Dual Frequency Side Scan Sonar.

## Survey boat SONĀRS – model Arronet 23.5 C



**MMSI:** 275041111

**Call sign:** YL2893

**Home port:** Riga, reg.Nr. 3100

Mono-hull Al 7.25m x 2.4m x 0.6m;

**Engine:** 110.3kW YAMAHA F150ATE, aux: Honda 0.9kW

**Navigation equipment:** FURUNO GP-32 GPS, ICOM-M323 VHF, FURUNO 1715 RADAR, SATELLITE EPIRB ACR RLB-38

**Safety equipment:** ARIMAR inflatable liferaft 4 pers., MARINE POOL automatic lifejackets, lifebuoys.

**Speed max:** 32 knots

**Crew:** 2+1 (max 8 pers.)

**Autonomy:** 1 day

**Built:** 2014, Arronet Teknik AB, Sweden

**Survey equipment:** Reson SeaBat T20-P multibeam system; positioning system TRIMBLE SPS 461 with TRIMBLE GSM MSN 940 modem for RTK TRIMBLE VRS Now TEC corrections or Marinestar; Sound velocity probe SVP-15, SVP-71; IMU SMC-108 motion sensor; Marine Magnetism Explorer Mini Marine Magnetometer; Teledyne PDS 3.9.5.2 software.

**Motorboat BLESSER 505 WA.**



**Home port:** Riga; **reg.Nr.:** LV-7323

**Mono - hull plastic;** 5.05m x 2.40m x 0.40m

**Engine:** 2 x 50HP Suzuki; **aux:** Honda 0.9kW

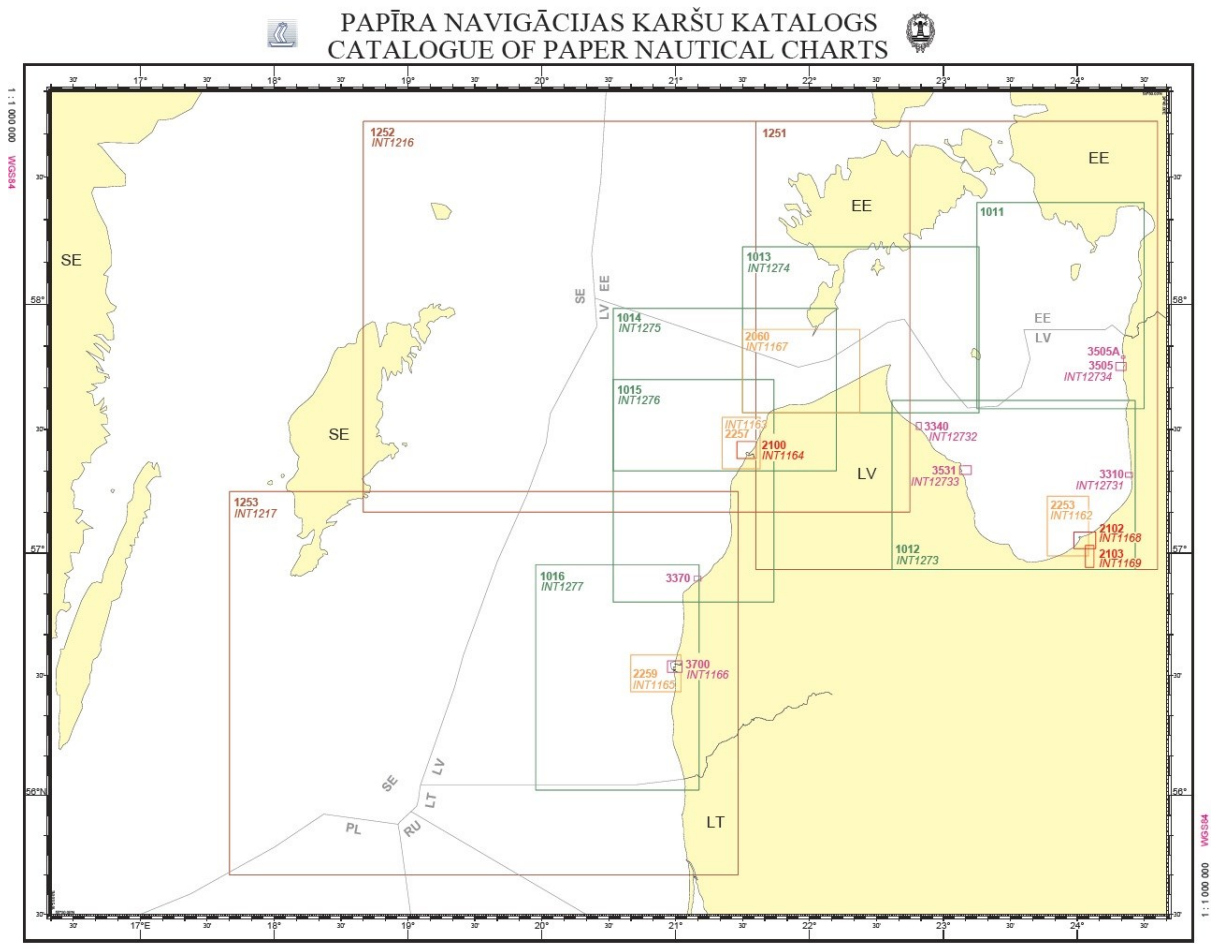
**Speed max:** 16 knots

**Crew:** 2+1

**Autonomy:** 1 day

**Survey equipment:** Deso Atlas 15 singlebeam; Hemisphere Crescent VS110 GPS compass; Sound velocity probe SVP-15, Marine Magnetics Explorer Mini Marine Magnetometer, HYPACK software.





# ENC COVERAGE

