



NATIONAL REPORT TO BALTIC SEA HYDROGRAPHIC COMMISSION

2024

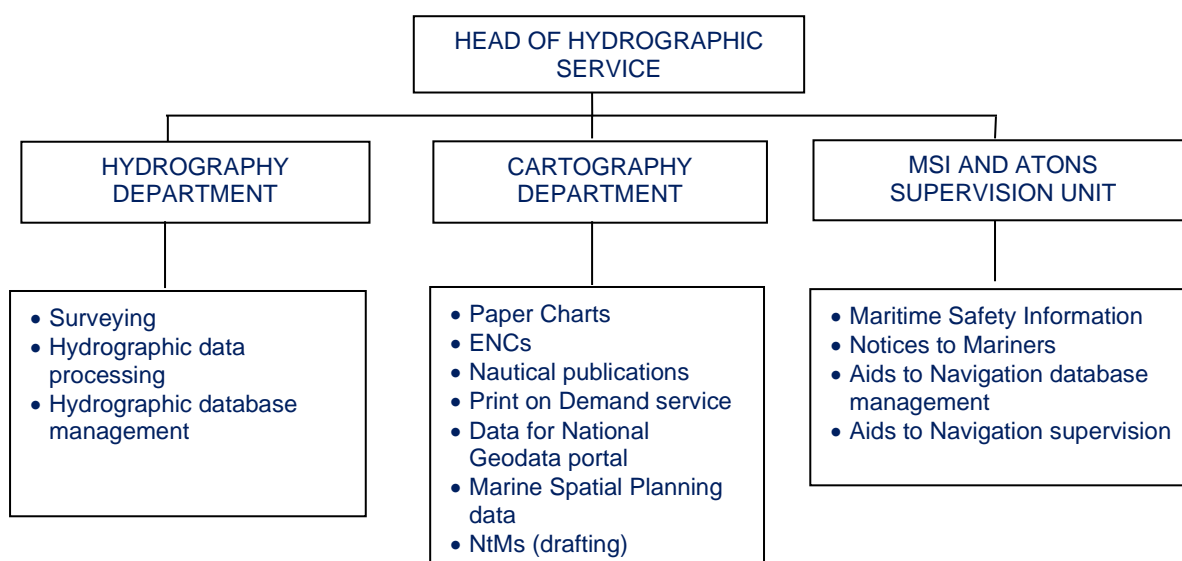


LATVIJAS JŪRAS ADMINISTRĀCIJA
MARITIME ADMINISTRATION OF LATVIA

THE REPORT GIVES AN OVERVIEW OF THE MAIN ACTIVITIES OF THE HYDROGRAPHIC SERVICE OF MARITIME ADMINISTRATION OF LATVIA IN PERIOD OF 2022-2023.

1. HYDROGRAPHIC SERVICE

Hydrographic Service (HS) is one of the Departments of the Maritime Administration of Latvia (MAL). MAL is State limited liability company supervised by the Ministry of Transport that fulfils functions according to the Law on Maritime Administration and Maritime Safety. HS organisational structure and main functions:



2. HYDROGRAPHIC SURVEYS

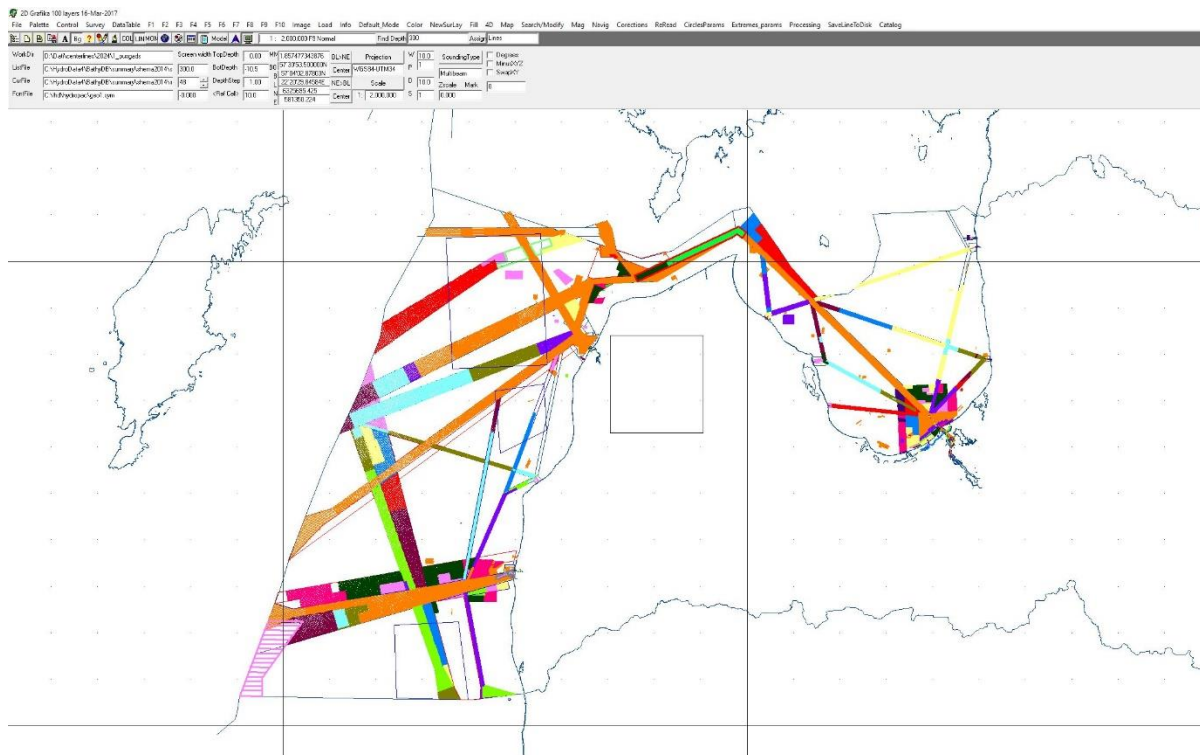
MAL provided surveys according to HELCOM Hydrographic re-Survey plan for Baltic Sea and in port areas in 2023-2024. Surveys are carried out according to the IHO S-44 standards. Survey data is processed and available for Hydrography and Cartography Departments via Hydrographic database.

Coverage of hydrographic surveys in 2024 (until September)

38.0 km² * - HELCOM routes in the Central Baltic and in the Gulf of Riga (CAT 2, CAT 3);

1.5 km²- Harbour areas.

* Hydrographic Vessel K.Dals is under upgrade of the surveying equipment.



Surveyed areas: 2001 to 2012- orange, 2013-magenta, 2014-green, 2015- mid green, 2016-cyan, 2017-dark red, 2018-red, 2019-blue, 2020-yellow, 2021-pink, 2022-dark green, 2023-gray green, 2024-purple

SURVEY VESSELS

The Hydrography Department (11 employees) provide surveying, data collecting and post-processing.

Hydrographic vessels owned by MAL:

- Kristiāns Dāls - 19 m twin hull survey vessel;
- Sonārs - 7.25 m single-hull survey boat for port and coastal areas survey;
- Blesser 505 - 5.5 m single-hull survey-boat on rivers, port and shallow coastal areas;

(More detailed information on hydrographic vessels are given in Annex 1.)

3. NEW CHARTS & UPDATES

Paper Charts

Latvian waters are fully covered by charts of relevant navigational scales. MAL produces 22 paper charts, including 19 INT charts which covers all of the Latvian waters.

All paper charts are updated monthly and available as Print on Demand (POD).

Status of the nautical charts within the limits of the Latvian EEZ:

Navigational Purpose/Scale	A Charts complying to IHO standard S-4 (Coverage %)	B Raster navigational charts complying IHO standard S-61 (Coverage %)	C ENCs (Coverage %)
Offshore passage/Small*	-	-	-
Landfall and Coastal passage/Medium	100	0	100
Approaches and Ports/Large	100	0	100
Percentage of Group A showing depths in metres	100		
Percentage of Group A referenced to a satellite datum	100		

* Latvia has no offshore passage / small scale charts.

See Annex 2 for detailed information on Chart and ENC coverage.

INT charts

New charts and new editions of charts:

2023 (September – December) – 1 new edition.

2024 (January – August) – 5 new editions.

National charts

New charts and new editions of charts (National paper charts are produced in accordance with IHO S-4 standard):

2023 (September – December) – 1 new chart.

2024 (January – August) – 1 new chart.

ENC

Latvia produces 26 ENCs in usage bands 1 to 6.

New editions and new ENCs:

2023 (September – December) – 1 new ENC, 12 new editions.

2024 (January - August) – 1 new ENC, 3 new ENCs - replacements, 8 new editions.

Usage 1 (Overview)	1
Usage 2 (General)	3
Usage 3 (Coastal)	11
Usage 4 (Approach)	3
Usage 5 (Harbour)	4
Usage 6 (Berthing)	3

ENCs are regularly updated. Temporary (T) and preliminary (P) Notices to Mariners are included.

ENC distribution

MAL distributes ENCs directly to customers via PRIMAR and direct agreements.

RNCs

RNCs are not produced by MAL.

Other charts

-

4. NEW PUBLICATIONS & UPDATES

New *Nautical Chart and Publications Catalogue* was published in 2024. Nautical charts and publications are updated monthly by Notices to Mariners. Nautical publications are available for download free of charge at website www.lja.lv

5. MSI

Existing infrastructure for transmission.

The National GMDSS VHF network along coastline provides broadcasting of local Navigational Warnings. Service is provided by the Maritime Rescue Coordination Centre of the Latvian Naval Forces Coast Guard Service (MRCC Riga) twice per day in English and Latvian. Urgent Navigational Warnings are transmitted immediately on receiving them and then included in next MSI broadcast.

NAVAREA I Baltic Sea Sub-Area Co-ordinator - Sweden is providing NAVTEX Service over Latvian waters. Navigational Warnings and other messages for Latvian waters are transmitted by Swedish and/or Estonian transmitters. Received NAVTEX messages are available on web at: www.navtex.lv also for quality checks.

Notices to Mariners are published monthly. Each year's first edition of NtM is Shipping Regulations, which contains updated information regarding ports, reporting requirements, areas prohibited and area restricted for navigation, MSI.

New infrastructure in accordance with GMDSS Master Plan.

-

6. C-55

MAL informs IHO on updates.

7. CAPACITY BUILDING

MAL is participating in the Baltic Sea e-Nav project – testing S-100 product creation.

8. OCEANOGRAPHIC ACTIVITIES

None

9. OTHER ACTIVITIES

INSPIRE directive

In conformity with INSPIRE directive, MAL takes part in the geospatial data sharing through the Geoportal of Latvia, which is the hub to the INSPIRE Geoportal. MAL HS has already provided both - metadata and geospatial data sets to relevant authorities.

National Spatial Planning

The Government of Latvia approved the National MSP on 14.05.2019.

IHO Working Groups

MAL is participating in NCWG, BSICCWG, BSMSIWG, CDWCWG, Re-survey MWG, HSWG, S101 PT, BSHC.

Other Working Groups

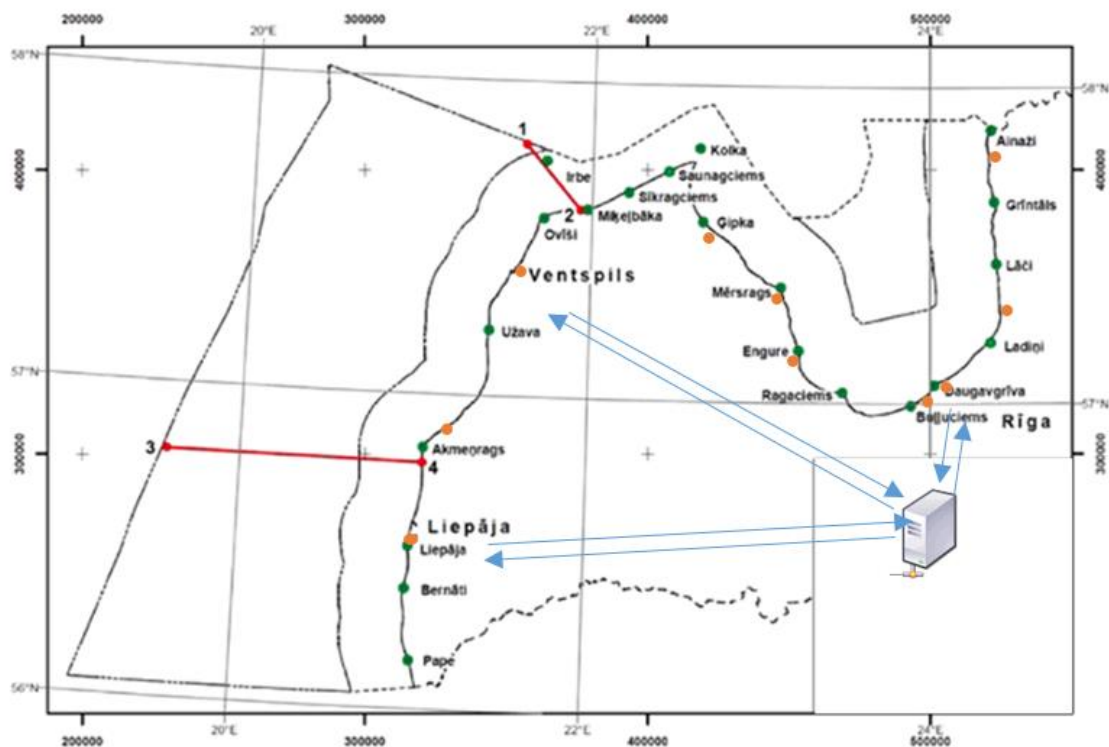
MAL is participating in PRIMAR TEWG.






10. AIDS TO NAVIGATION

National legislation for ATONs is developed based on international requirements, basically on requirements of IALA. Some of issues covered by those legal requirements are:

- buoyage system used in waters of Latvia is in conformity with Region "A" of IALA;
- competency of MAL – to supervise establishment, operation and system of ATONs;
- requirement to coordinate in advance with MAL any changes in operation of ATON.
- requirements for ATONs – defines type, category, color etc. of ATONs;
- procedure for ensuring the operation – requirement to annually update information of ATON; how often should operational controls be carried out and what should be checked during those controls; controls of ATONs from seaside; to have spare parts available and needed amount;
- obligations and rights of ATONs maintaining, ensuring continuous operation of ATON and the compliance of the operational parameters with the nautical publication – list of lights; reporting changes in operation; submitting maintenance plans and an overview of the execution of such plan;
- establishment or discontinuation of ATON is only with an approval from MAL.

Total number of ATONs in average is 350. All ATONs within port area are managed by relevant port authorities, but outside port area managed area is divided among three major ports (Rīga, Ventspils, Liepāja).



	Lighthouses/beacons outside port area
	Ports
	Exchange of information (with all ports): <ul style="list-style-type: none"> • Reports on changes of AtoN operation • Establishment of new AtoN • Plans and review of maintenance works • Monitoring information (if AtoN is equipped)
	Managed area by Rīga, Ventspils, Liepāja
	MAL and maintained database of AtoN: <ul style="list-style-type: none"> • Information of all AtoNs • Supervision of AtoN • Promulgation of information related to any changes in the operation of AtoN • Check if AtoNs are managed according to the set requirements

DETAILED INFORMATION REGARDING HYDROGRAPHIC VESSELS**VESSEL KRISTIĀNS DĀLS**

MMSI	275027000
CALL SIGN	YLAD
HOME PORT	Riga, reg.Nr. 0123
TWIN - HULL	Al 19.8x6.7x1.3; GT 33t; DWT 9t
ENGINE	2x165kW IVECO, aux.: NANNI DIESEL 4.220 20 kW
SPEED	10 knots
CREW	5
AUTONOMY	3 days
BUILT	2001, FINLAND UUDENKAUPUNGIN TYOVENE OY.
NAVIGATION EQUIPMENT	Furuno FRS 1000 - radar/plotter/sounder , JLR-21 GPS Compass, Furuno VHF FM 8500 - radiotelephone
SURVEY EQUIPMENT	Kongsberg EM 2040P MKII multibeam echosounder, Seapath 380 positioning, MRU 5 in SB11 Subsea Bottle motion sensor, VALEPORT SWIFT SVP sound velocity profiler, Kongsberg SIS, HYPCK MAX and HYSWEEP software

SURVEY BOAT SONĀRS – model Arronet 23.5 C

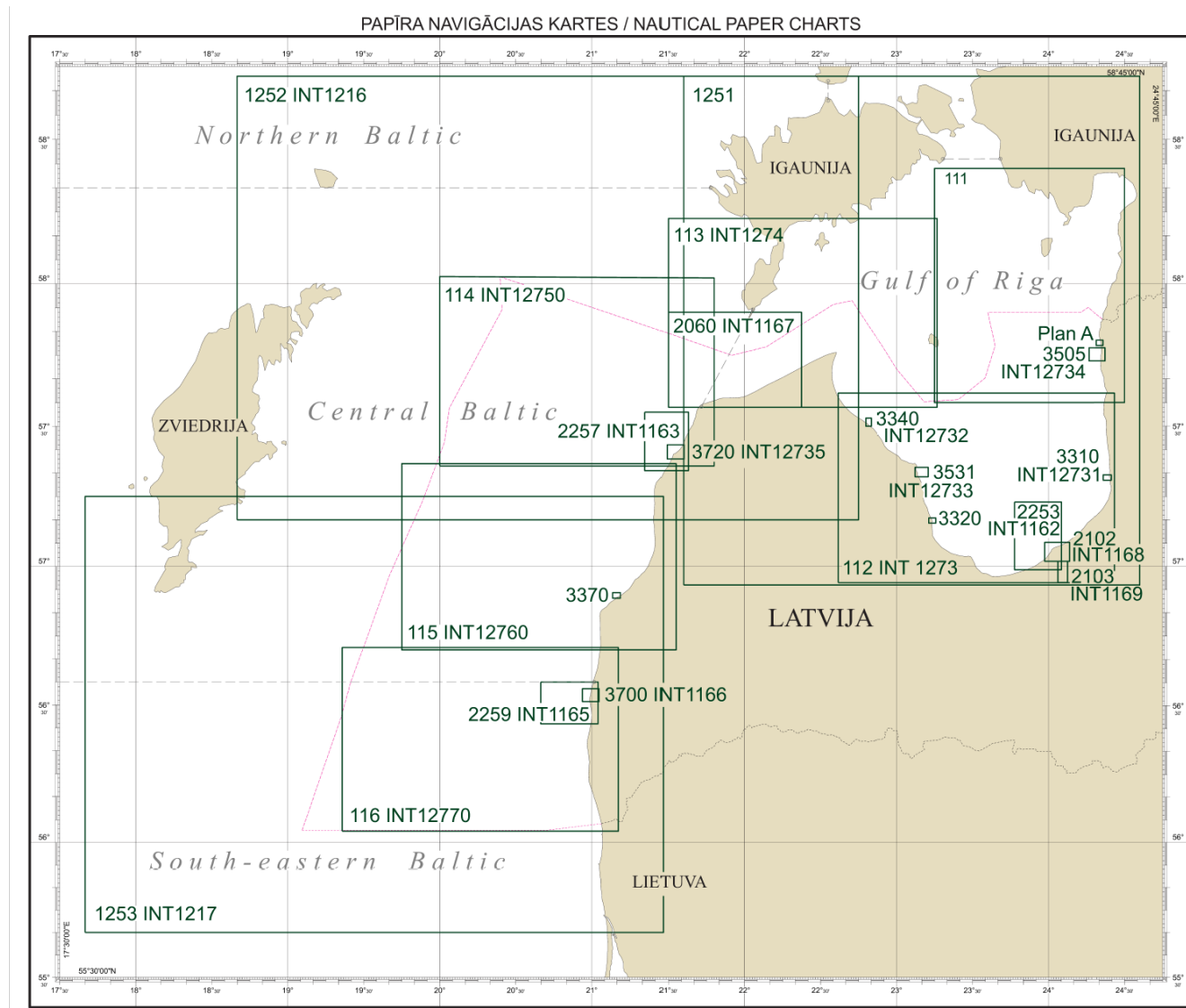
MMSI	275041111
CALL SIGN	YL2893
HOME PORT	Riga, reg.Nr. 3100
MONO - HULL	Al 7.25m x 2.4m x 0.6m
ENGINE	110.3kW YAMAHA F150ATE, aux: Honda 0.9kW
SPEED MAX	29 knots
CREW	2+1 (max 4 pers.)
AUTONOMY	1 day
BUILT	2014, Arronet Teknik AB, Sweden
NAVIGATION EQUIPMENT	FURUNO GP-32 GPS, ICOM-M323 VHF, FURUNO 1715 RADAR, SATELLITE EPIRB ACR RLB-38,
SAFETY EQUIPMENT	ARIMAR inflatable liferaft 4 pers., MARINE POOL automatic lifejackets, lifebuoys.
SURVEY EQUIPMENT	Reson SeaBat T20-P multibeam system; positioning system TRIMBLE MPS566; VALEPORT SWIFT SVP sound velocity profiler; SATURN 10 INS motion sensor; Teledyne PDS software.

MOTORBOAT BLESSER 505 WA.



HOME PORT	Riga; reg.Nr.: LV-7323
MONO - HULL	plastic; 5.05m x 2.40m x 0.40m
ENGINE	2 x 50HP Suzuki; aux: Honda 0.9kW
SPEED MAX	16 knots
CREW	2+1
AUTONOMY	1 day
SURVEY EQUIPMENT	Deso Atlas 15 singlebeam; Hemisphere Crescent VS110 GPS compass; South Galaxy G2 GNSS; HYPACK software, VALEPORT SWIFT SVP sound velocity profiler

PAPER CHART COVERAGE



ENC COVERAGE

ENC KARŠU SHĒMA / ENC OVERVIEW

