

TRAFICOM

Finnish Transport and Communications Agency



The National Report of Finland

by the Finnish Hydrographic Office

29th Baltic Sea Hydrographic Conference
17 - 19 September 2024, Tallinn, Estonia



Interreg
Baltic Sea Region



Co-fu
the E

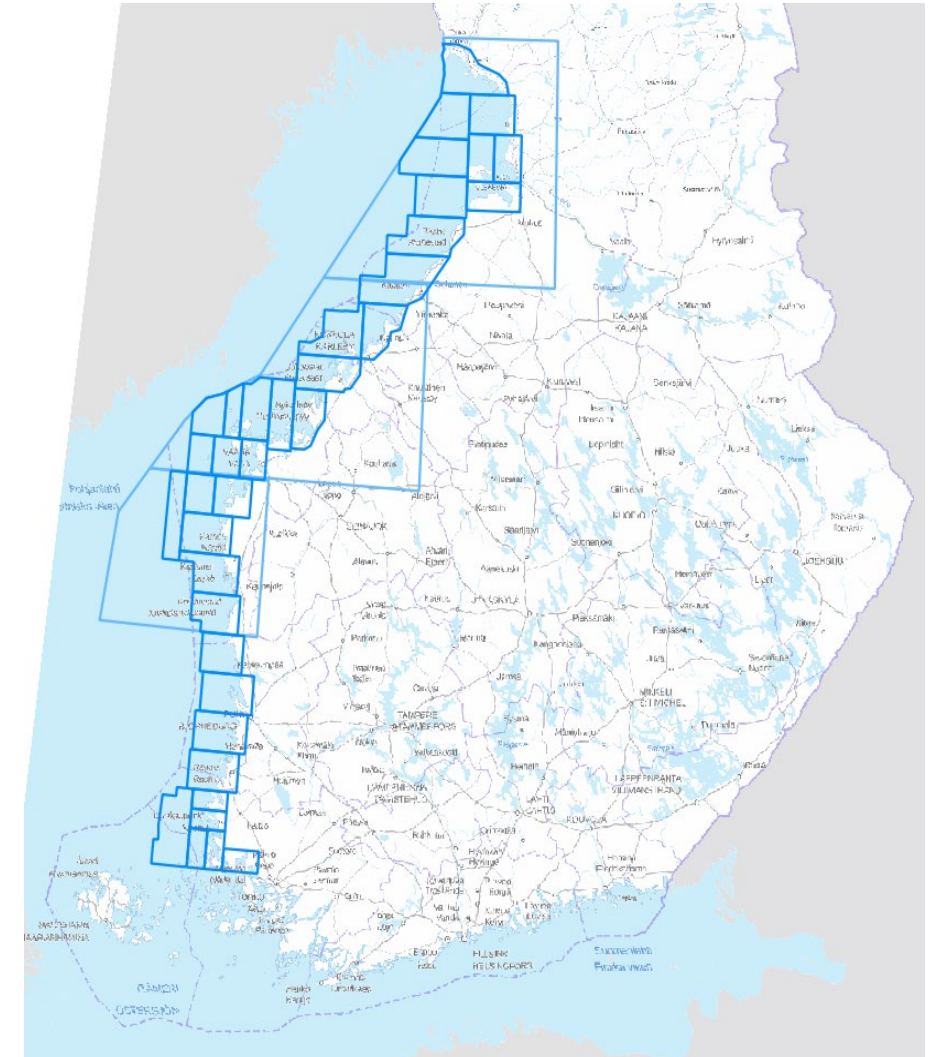
Hydrographic surveys

- ▶ The hydrographic surveys continues on shallow, nearshore HELCOM category III areas with LiDAR and multibeam technologies (Territorial waters, western Gulf of Finland)
- ▶ Approaches to Kemi fairway (BBKE2023)
- ▶ Haukivesi-Kolovesi (Inland waters) surveys continues.
- ▶ Aging of Cat I surveys need to be studied.
- ▶ The survey of Finland Territorial Sea border base points with TopoLiDAR and areal photography.



New charts and updates

- ▶ The chart production follows the plan of the "New vertical chart reference BSCD2000" (~FIN N2000) implementation.
- ▶ 2 new ENC's and 34 new ENC editions
- ▶ 10 new editions of printed charts
- ▶ One new edition of printed Chart serie



The Finnish N2000 (Baltic Sea Chart Datum 2000) charts as of June 2024

New publications and updates

The volume Sailing directions for Finnish waters - Part 2 - Main approach channels, contains channel design data of the main approaches. These volumes are published by area, following the introduction of nautical charts in Baltic Sea Chart Datum 2000 (N2000).

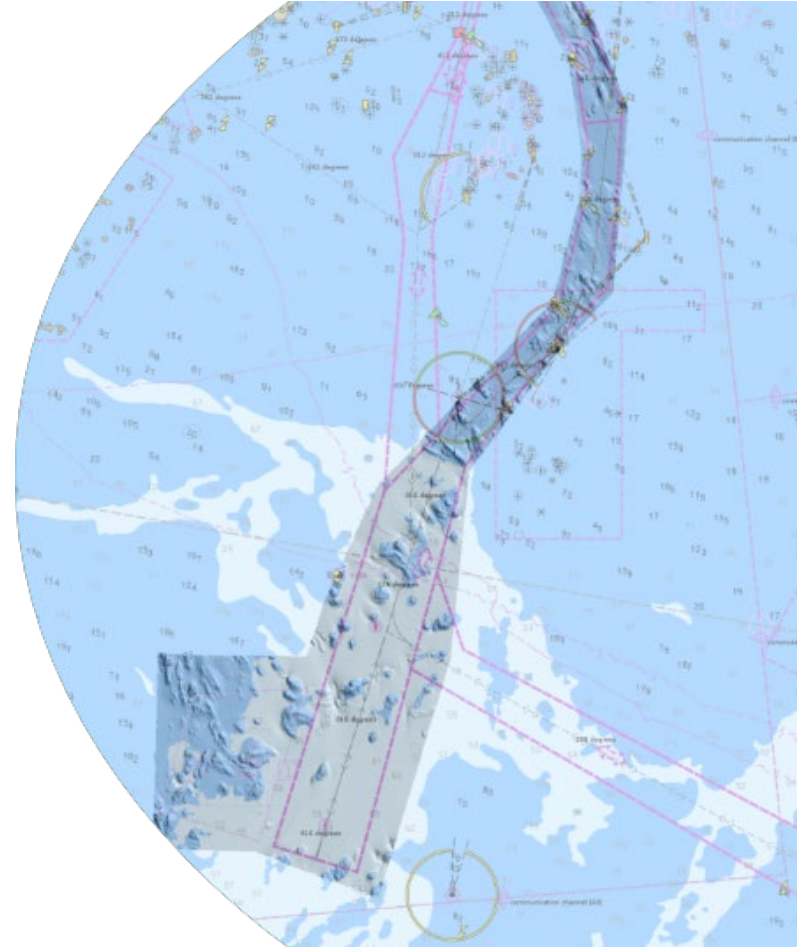
The table shows published and planned volumes of the Sailing directions for Finnish waters - Part 2. Gray color indicates planned volumes. For an updated list of currently published publications see; <https://fiho.fi/lnk/sd/en>

- Part 2.1.1 - Main approach channels - Gulf of Finland, East
- Part 2.1.2 - Main approach channels - Gulf of Finland, West
- Part 2.2.1 - Main approach channels - Archipelago Sea
- Part 2.2.2 - Main approach channels - Åland Sea
- Part 2.3.1 - Main approach channels - Sea of Bothnia (2023)
- Part 2.3.2 - Main approach channels - The Quark (2022)
- Part 2.3.3 - Main approach channels - Bay of Bothnia (2021)
- Part 2.4.1 - Main approach channels - Inland waterways



National Coordination of S-100 implementation

- ▶ S-101 ENC
 - ▶ S-101 2.0 Test data 1/2025 →
 - ▶ Production database conversion S-57 → S-101 6/2025
 - ▶ Database tuning and staff training
 - ▶ Production startup 8/2025
 - ▶ FIN S-101 delivery (via RENC) 1/2026 →
- ▶ S-102 Bathymetric Surface
 - ▶ S-102 3.0 Test data 1/2025 →
 - ▶ Production startup 8/2025
 - ▶ FIN S-102 delivery (via RENC) 1/2026 →
- ▶ S-124 Navigational Warnings
 - ▶ VILKKU development project → NavWarnings management + S-124 production
 - ▶ Production startup 10/2026
 - ▶ FIN S-124 delivery 1/2026 →

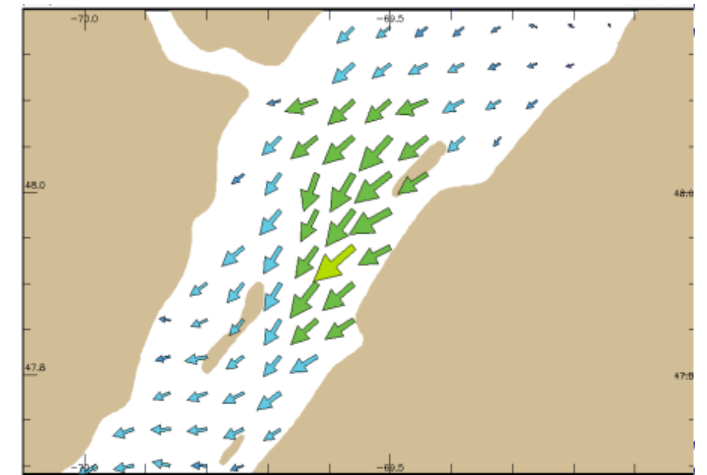
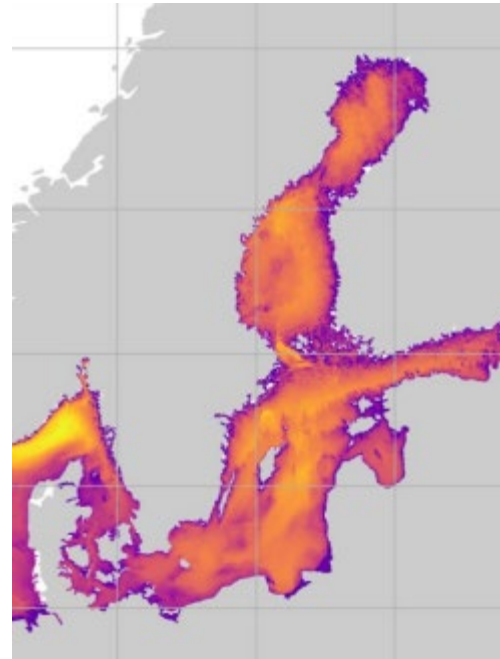


National Coordination of S-100 implementation

- ▶ S-104 Water Level Information
 - ▶ S-104 1.0 Test data Q4/2024 →
 - ▶ Production startup ?/2025
 - ▶ FIN S-104 delivery 1/2026 →
- ▶ S-111 Surface Currents
 - ▶ S-111 1.0 Test data Q4/2024 →
 - ▶ Production startup ?/2025
 - ▶ FIN S-111 delivery 1/2026 →



FINNISH METEOROLOGICAL INSTITUTE



Thank you !



TRAFICOM
Finnish Transport and Communications Agency