

HYDROGRAPHIC NATIONAL REPORT OF LITHUANIA

1. Hydrographic Office

Hydrographic activities are carried out by the Hydrographic Division (HD) of Waterborne Transport Department of Lithuanian Transport Safety Administration (LTSA - <https://ltsa.lrv.lt/>).

Ministry of Transport and Communications is the founder of LTSA. The institution is funded from state budget.

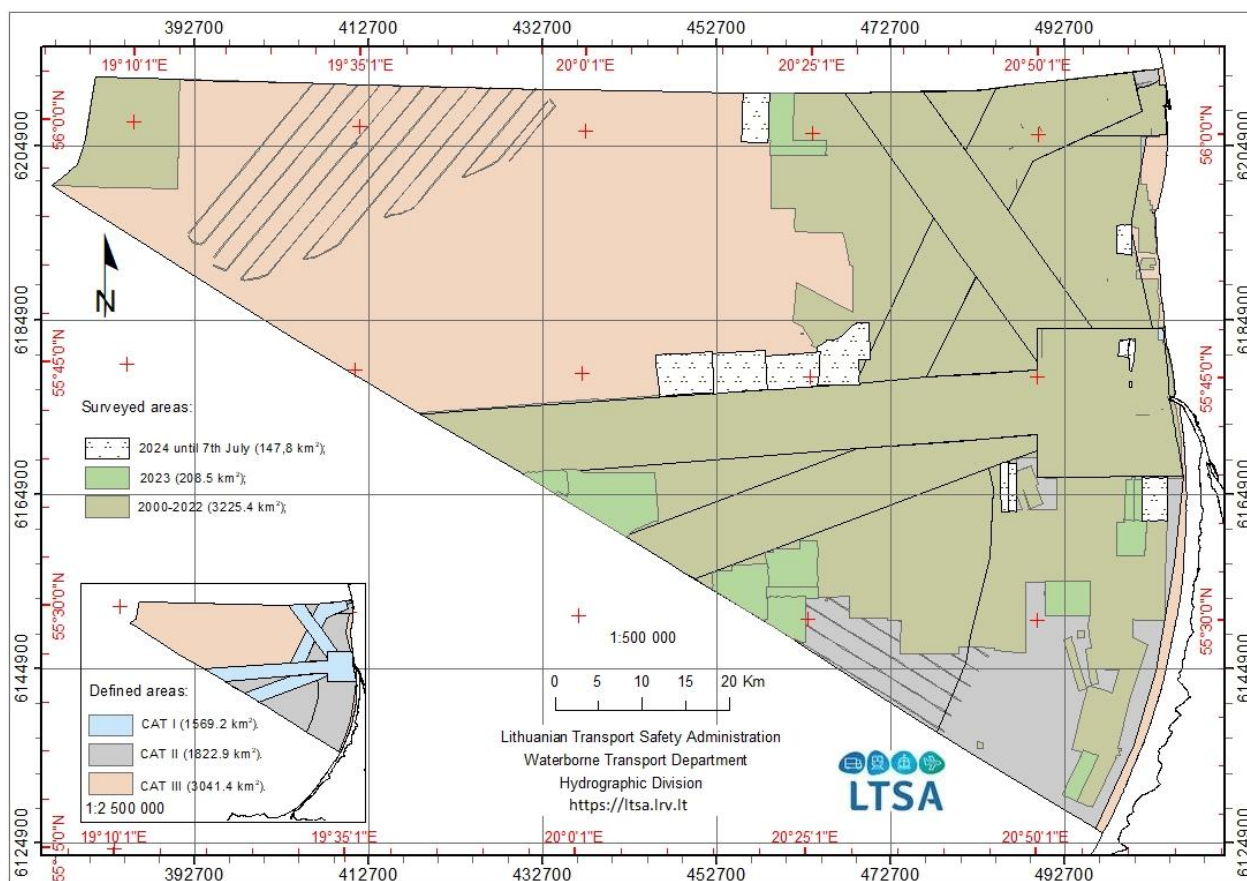
New organizational structure of LTSA entered into force from 1st of April 2024.

2. Surveys

For hydrographic surveying HD has a 20 m long catamaran type survey vessel “VARŪNA” equipped with Kongsberg EM 2040C multibeam echosounder.

Currently surveys are conducted according to HELCOM-BSHC harmonized hydrographic resurvey scheme in CAT II and CAT III areas.

Nautical surveying is carried out according to the IHO S-44 standard and the data is used in nautical charting.



Up to July 2024 in total an area of **1568 km²** of main routes and approaches (CAT I) and **1360 km²** of CAT II was surveyed.

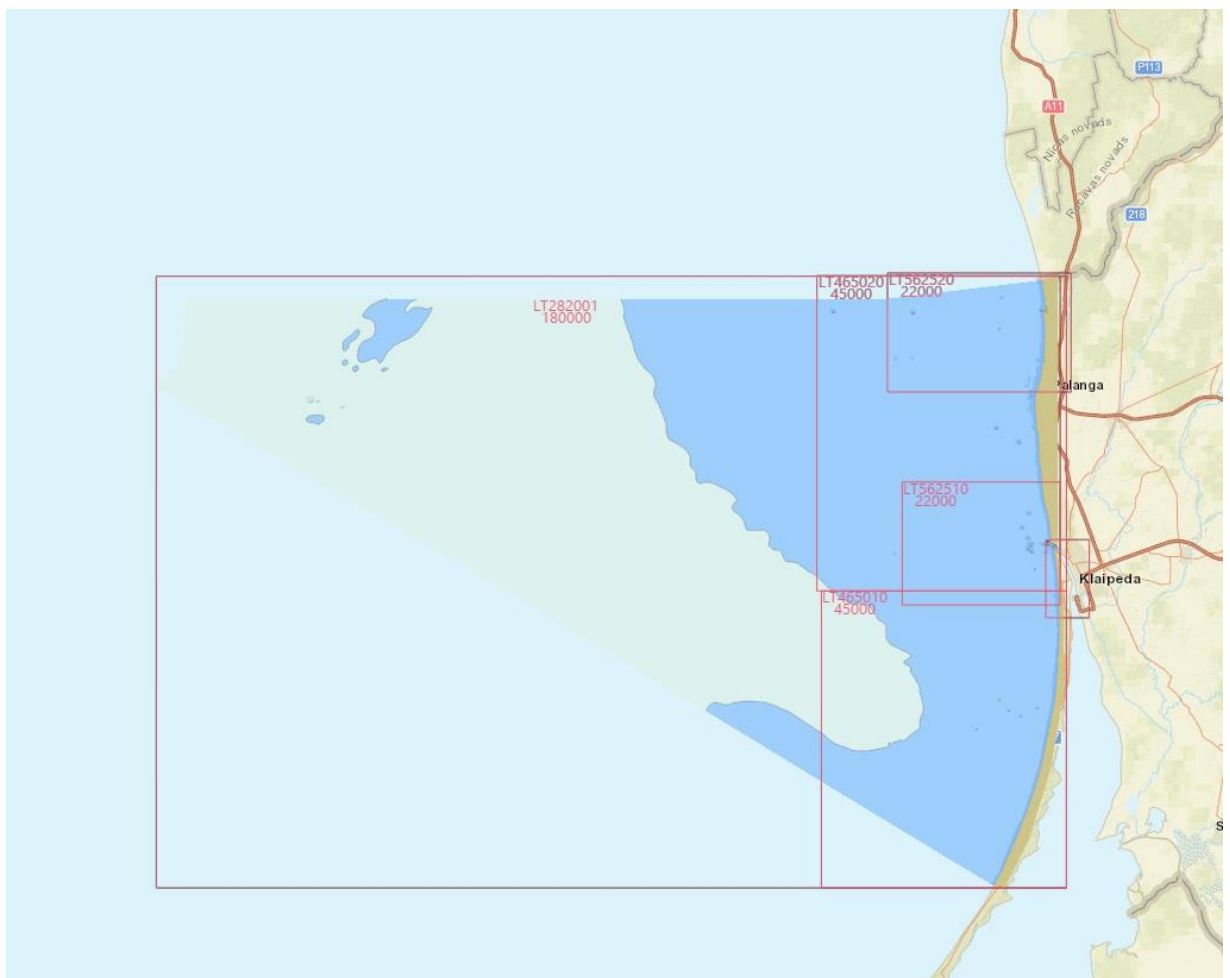
In **2024** until 7th of July there was surveyed an area of **147.8 km²** (see fig. above).

3. New charts & updates:

ENCs

Overview of ENCs can be found on interactive chart server (<https://hydro.eltsa.lt>) (see fig. below). Lithuanian waters are covered by six ENCs in four navigational purpose bands:

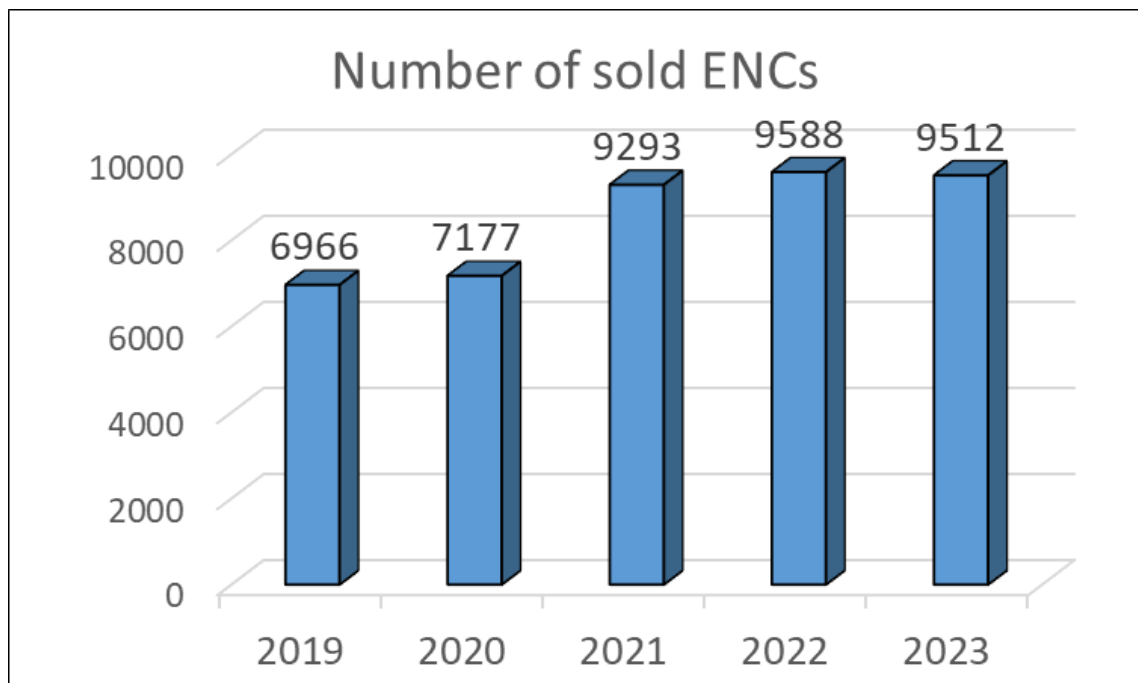
Navigational purpose	Chart No.
<i>General</i>	LT282001
<i>Approach</i>	LT465010
<i>Approach</i>	LT465020
<i>Harbour</i>	LT562510
<i>Harbour</i>	LT562520
<i>Berthing</i>	LT660710



One Overview and two Coastal ENCs are in preparation (LT381001 and LT381002).

Chart Distribution:

ENCs are distributed through PRIMAR. In 2023 **9512 ENCs** were sold (see fig. below).



RNCs

RNCs are not produced.

INT charts

INT charts are not produced.

National paper charts

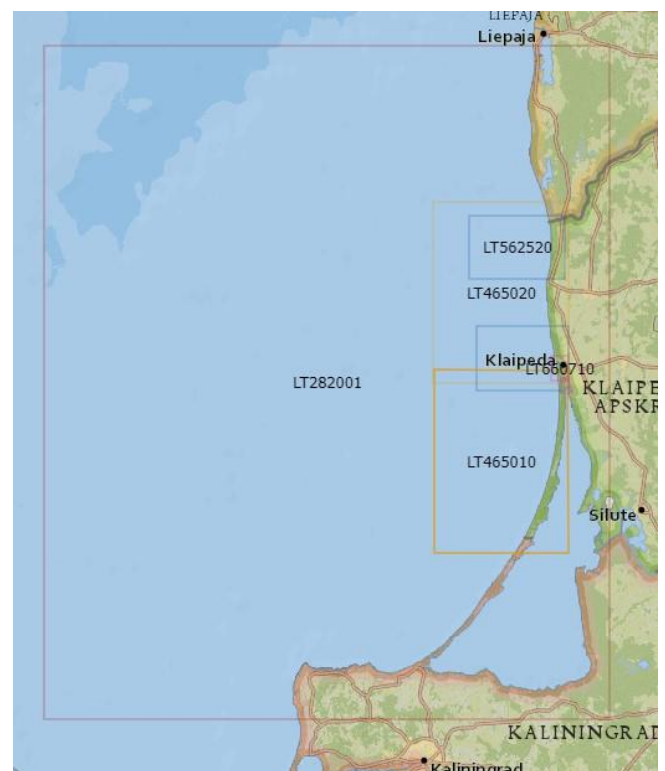
Overview of paper charts can be found on interactive chart server (<https://hydro.eltsa.lt>) (see fig. below). Lithuanian waters are covered by seven paper charts in five navigational purpose bands:

Navigational purpose	Chart No.
<i>General</i>	LT282001
<i>Coastal</i>	LT381001
<i>Approach</i>	LT465010
<i>Approach</i>	LT465020
<i>Harbour</i>	LT562510
<i>Harbour</i>	LT562520
<i>Berthing</i>	LT660710

Paper charts are produced from the same database as ENC's. All seven paper charts are produced. Paper charts are distributed for personal use cost free by filling in a request form which can be found on the indicated portal in section publications.

Other charts

Small craft charts are in preparation.



4. New publications & updates:

New Publications

New publication *none*.

Updated Publications

Updated publication *LIST OF ATON LIGHTS IN LITHUANIAN WATERS. BALTIC SEA. 2024*;

Updated publication *Shipping Regulations*;

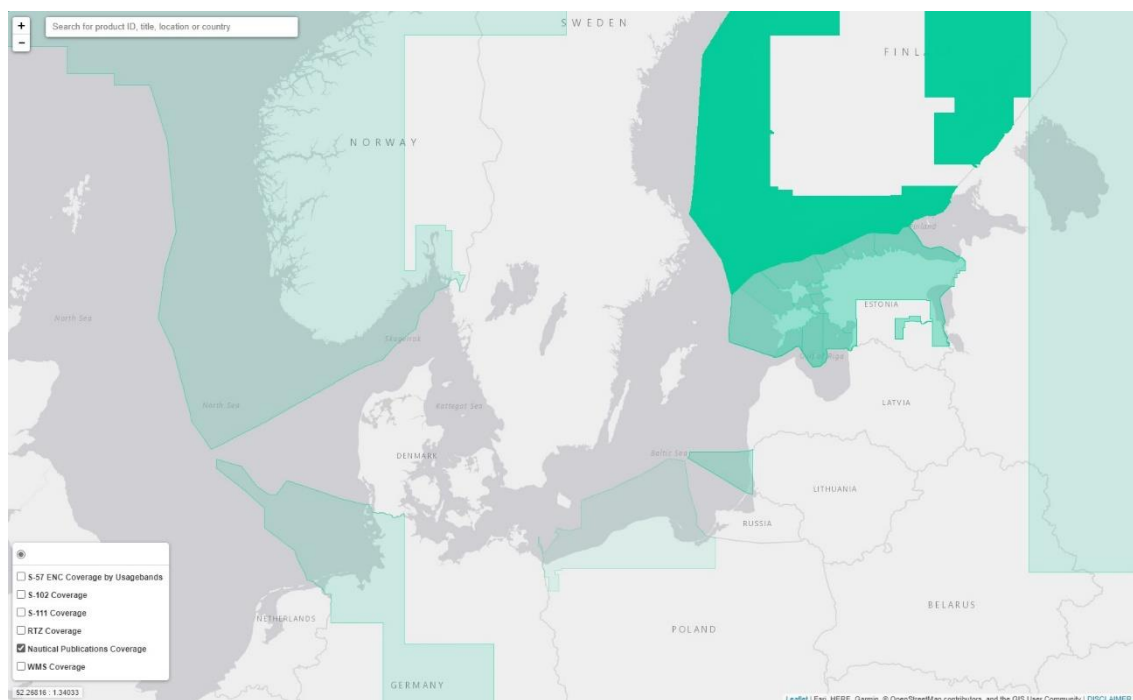
Publication *Notices to Mariners* is issued on a monthly basis.

Means of delivery

All publications can be found in digital form on the LTSA web page:

<https://hydro.eltsa.lt/portal/apps/sites/#/hidrografine-veikla-1/pages/leidiniai>

Also nautical publications are distributed through PRIMAR (see screenshot of 12 July 2024 below).



5. MSI

Existing infrastructure for MSI dissemination.

National GMDSS VHF network along coastline for local Navigational Warnings. Service is provided by Lithuania's Navy MRCC Klaipeda on VHF in Lithuanian and English.

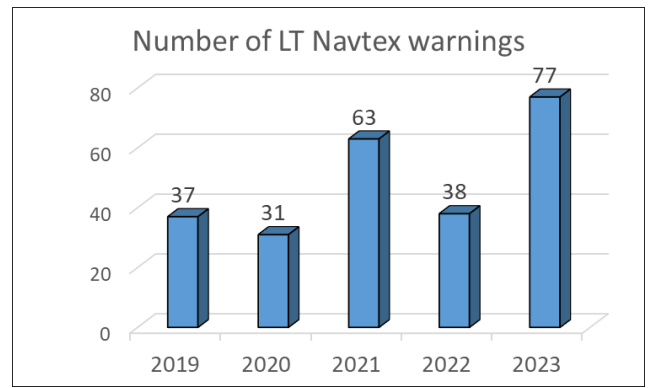
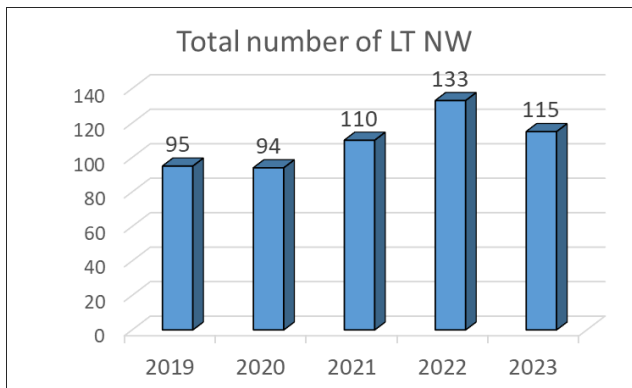
NAVTEX messages are transmitted by NAVAREA 1 Baltic sea subarea Coordinator.

All valid Lithuanian navigational warnings can be found online on interactive web portal:

<https://hydro.eltsa.lt/nw/en.html>

Statistics on work of the National Coordinator

In 2023 115 Navigational Warnings were issued and 77 NW of them were disseminated through NAVTEX (see fig. below).



New infrastructure in accordance with GMDSS Master Plan

GMDSS network covering areas A1 and A2. No new construction during last Year.

6. C-55

Status of hydrographic survey of waters out to the limits of the EEZ:

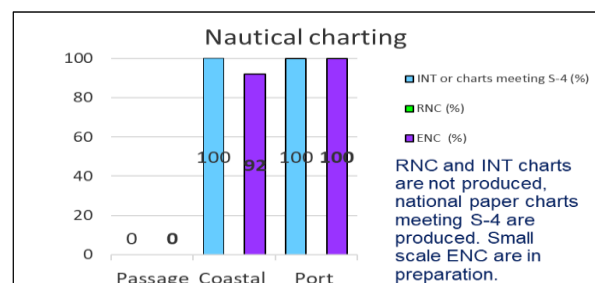
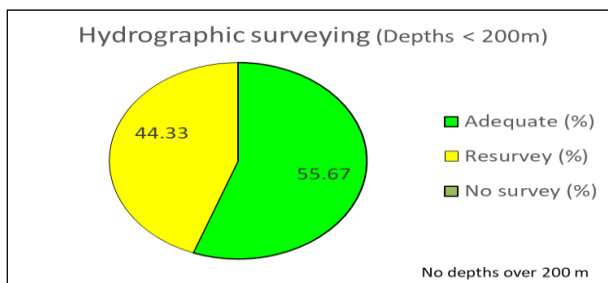
Status of surveys	Adequat (%)	Resurvey (%)	No survey (%)
Depths 0 - 200m	55.67	44.33	0
Depths > 200m	0	0	0

Status of nautical charting within the limits of the EEZ:

Chart coverage	Passage (%)	Coastal (%)	Port (%)
INT or other paper charts meeting S-4	0	100	100
RNC	0	0	0
ENC	0	92	100

Status of Paper Charts

Paper charts with depths in metres (%)	100
Paper charts referenced to a satellite datum (%)	100



Navigational information (S-53):

MSI	Y/N	Comments on MSI
Local warning	YES	can be found on https://hydro.eltsa.lt/nw/en.html
Coastal warning	YES	Transmitted by NAVAREA I Baltic Sea Sub-area Coordinator. Can be found on https://hydro.eltsa.lt/nw/en.html
Nav warning	NO	Transmitted by NAVAREA I Baltic Sea Sub-area Coordinator.
Port warning	YES	can be found on https://hydro.eltsa.lt/nw/en.html

GMDSS implementation (IMO Publication 970 - GMDSS Handbook)

GMDSS	Y/N	Comments on GMDSS
Master Plan	YES	
Area A1	YES	MRCC Klaipeda
Area A2	YES	MRCC Klaipeda
Area A3	NO	
NAVTEX	YES	Transmitted by NAVAREA I Baltic Sea Sub-area Coordinator.
SafetyNet	NO	

7. Capacity Building

Offer of or demand for Capacity Building

Nothing to report

Training received, needed, offered

Nothing to report

Status of national, bilateral, multilateral or regional development projects with hydrographic component

Participating as associated organization in the multilateral project „Shared waters – Same standards. Baltic Sea Partnership for Future Navigation – Baltic Sea e-Nav“.

8. Oceanographic activities

Carried out by Environmental Protection Agency (EPA): <https://aaa.lrv.lt/?lang=en>

9. Spatial data infrastructures

Status of MSDI

The Maritime Spatial Planning (MSP) in Lithuania is included into the national legislation regulating spatial planning – Law on Territorial Planning and its secondary legal acts. The Comprehensive Plan of the Territory of Lithuania is complemented by the marine spatial solutions adopted on 11 June 2015 by the Parliament of Lithuania and is a legally binding document obligatory for the state governmental institutions. Part of the marine space (up to 20 m isobaths) also falls under the regulation of the Law of the Coastal Strip. MSP applies to the entire marine area of Lithuania including territorial waters and the exclusive economic zone (EEZ). A complete SEA for the MSP was elaborated including national and transnational consultations with Lithuanian stakeholders as well as with Sweden and Latvia (summarized information source: VASAB MSP report Lithuania).

Relationship with the NSDI

MSDI is part of the NSDI.

Involvement in regional or global MSDI efforts

Nothing to report.

National implementation of the Shared Data Principles – including any national data policy and impact on marine data

Marine and other spatial data are shared through national Spatial Information Infrastructure portal (<https://www.geoportal.lt/geoportal/en/web/en>). Lithuanian bathymetric model published on the LTSA

portal from June 2024 has been adjusted by SMA and published in 500 m resolution and is available on EMODnet portal as well.

MSDI national portal

The National Center for Remote Sensing and Geoinformatics „GIS-Centras“ (SE „GIS-Centras“) is the State Enterprise, responsible for update and distribution of the national official geographic databases. SE „GIS-Centras“ is in charge of management and development of the Lithuanian Spatial Information Infrastructure portal <https://www.geoportal.lt/geoportal/en/web/en>), which is the place also for marine spatial data.

10. Innovation

Use of new technologies

Nothing to report.

Risk assessment

Risk factors table elaborated.

Policy matters

Nothing to report.

11. Other activities

Participation in IHO meetings

Participating as observer member nation in IHO IENWG working group.

Meteorological data collection

Carried out by Lithuanian Hydrometeorological Service under the Ministry of Environment:
<http://www.meteo.lt/en/>

Geospatial studies

From January 1st 2024 administration functions of <https://www.geoportal.lt/geoportal/en/web/en> took over public institution Construction Sector Development Agency, and the manager of the portal is the Ministry of Environment.

Preparation for responses to disasters

Coordinated by MRCC of Lithuanian Navy.

Environmental protection

Carried out by Environmental Protection Agency (EPA - <https://aaa.lrv.lt/?lang=en>) and Environmental Protection Department under the Ministry of Environment (EPD - <https://aad.lrv.lt/>).

Engagement with the Maritime Administration

Maritime Administration's functions are carried out by LTSA.

Aids to Navigation matters

In port AtoNs managed by Port Authority. Marine AtoNs managed by LTSA and other bodies depending on ownership.

Magnetic and gravity surveys

Not performed by HD. Coordinated by National Land Service (NLS) under the Ministry of Agriculture of the Republic of Lithuania, performed by Institute of Geodesy of VILNIUS TECH University. New surveys have been performed in Q1 and Q2 of 2024.

International engagements

Participating as associated member nation in BSHC and its working groups (MWG, BSICCWG, BSMSIWG, CDCWWG, BSBDWG). Also participating in PRIMAR TEWG working group.

12. Conclusions

During the period from last BSHC Conference Hydrographic activities were carried out successfully.