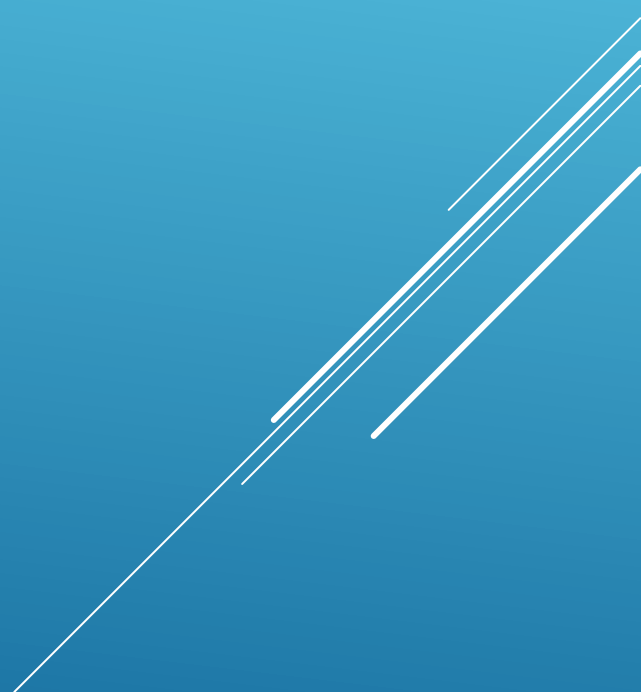


- ▶ Highlights of National report of Lithuania to 29th BSHC Conference

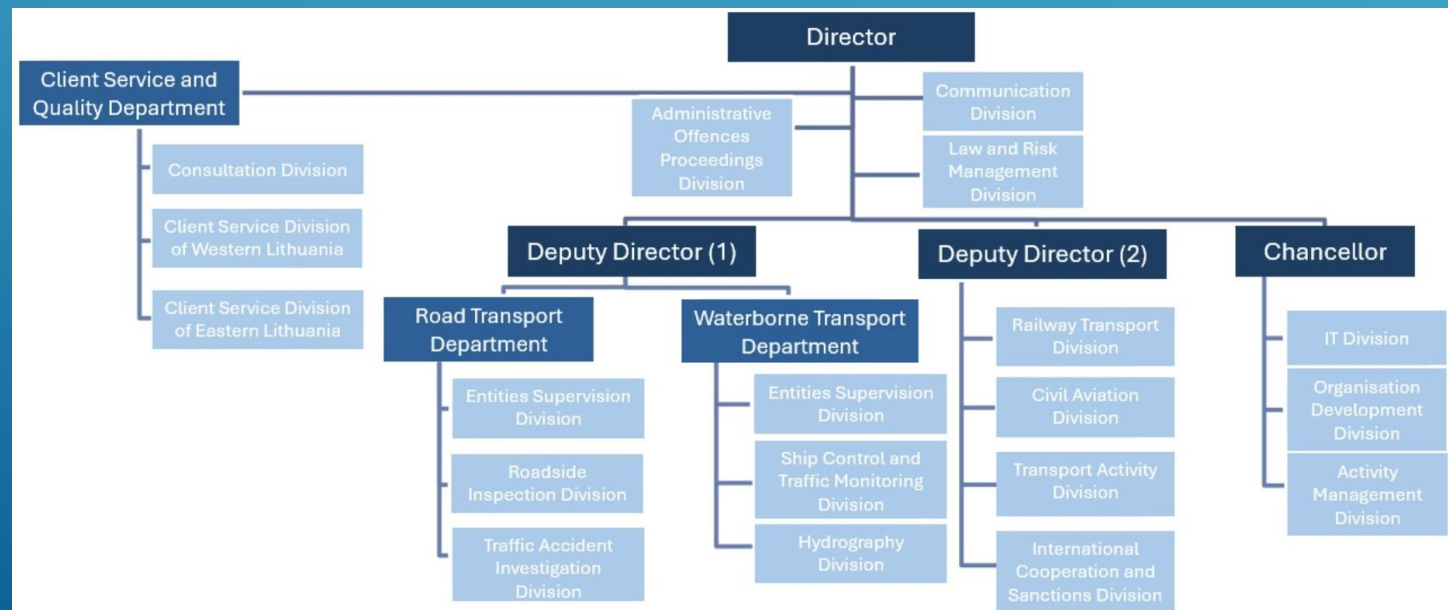
17-19 September 2024



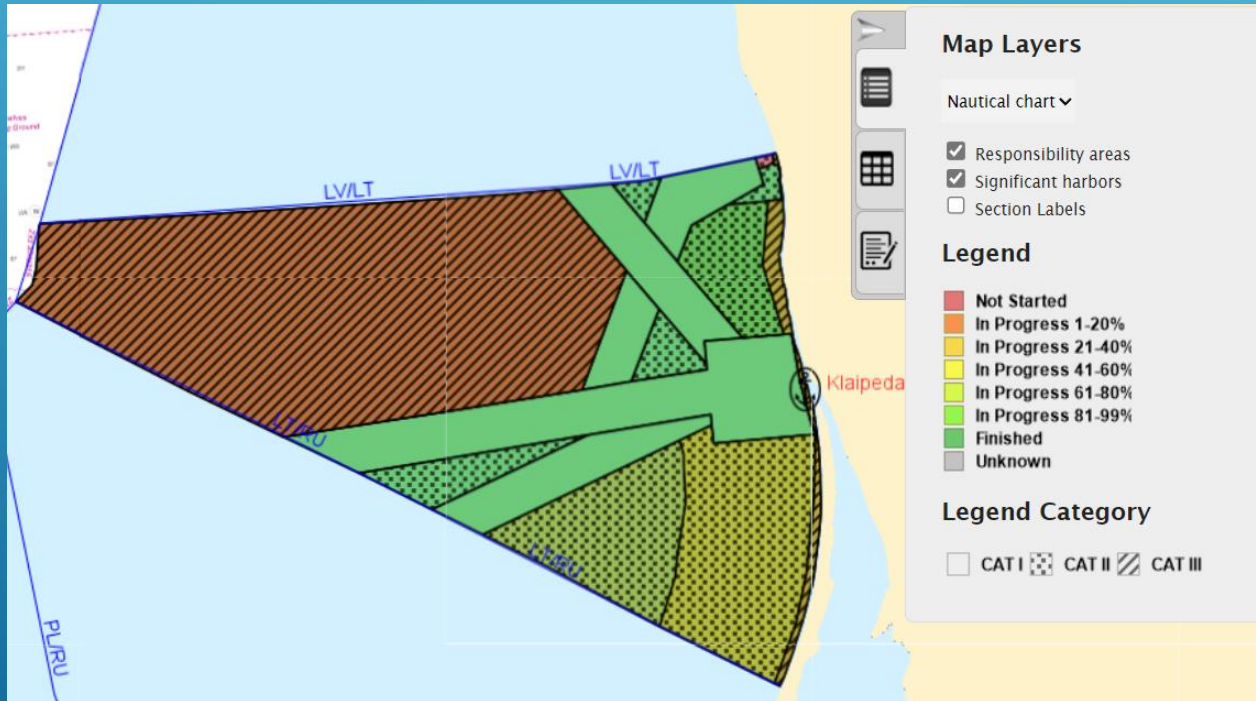
1. HYDROGRAPHIC OFFICE

Changes from last BSHC:

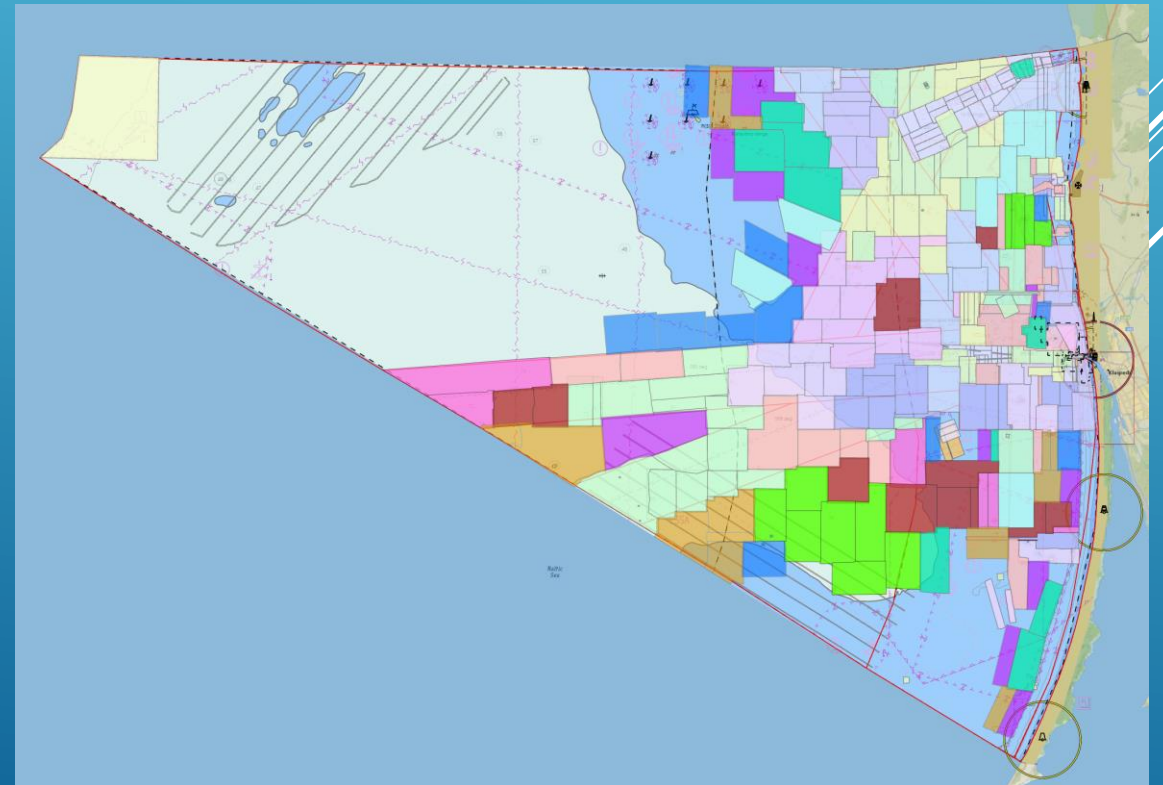
- ▶ New structure of LTSA (from 1st of April 2024)



2. SURVEYS



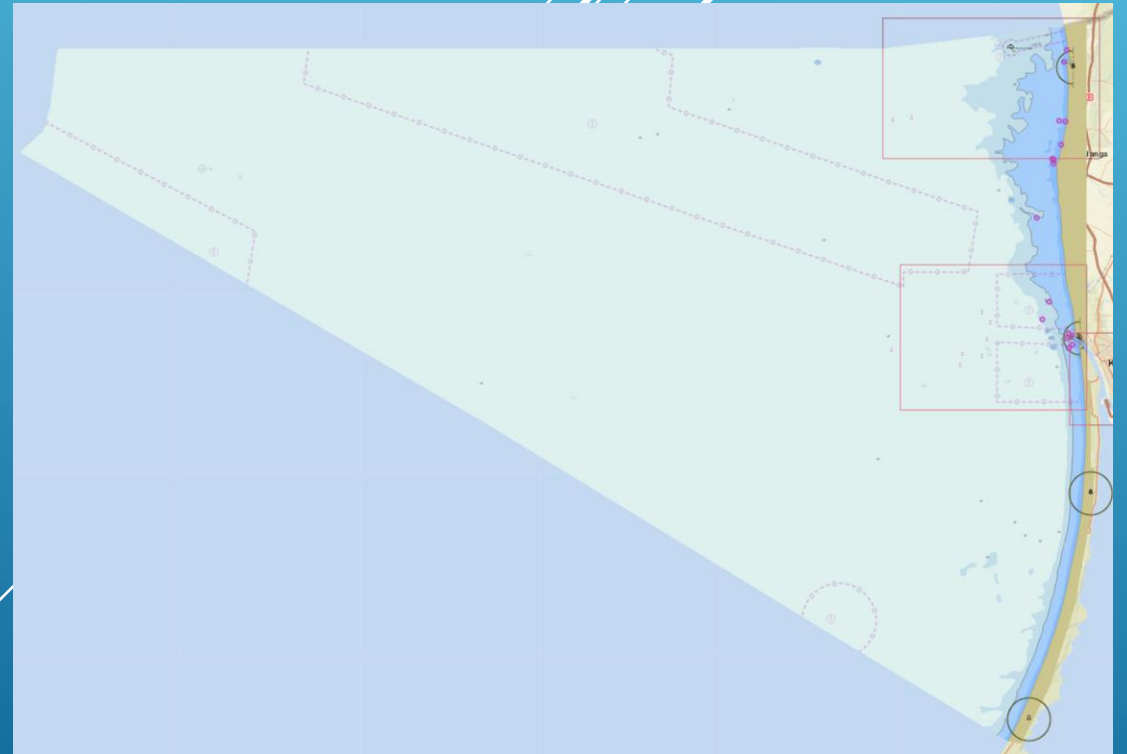
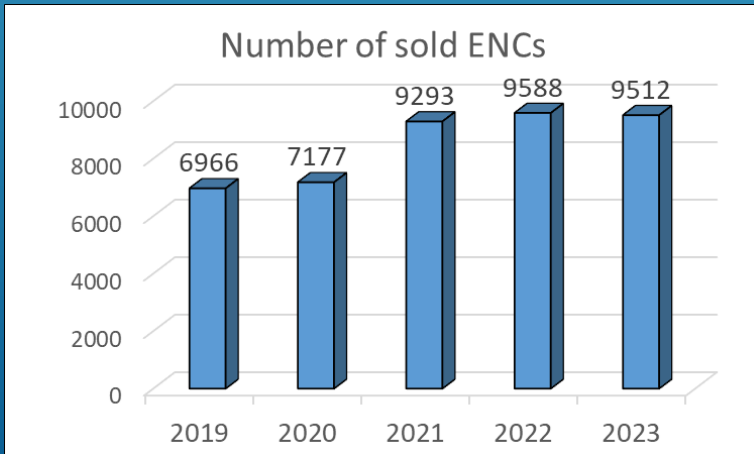
- ▶ Finished areas of CAT 1; Updated information on <https://helcomresurvey.sjofartsvverket.se/>
- ▶ Continue surveys in areas of CAT 2 & 3.



3. NEW CHARTS & UPDATES:

Currently 6 ENC are in distribution.

We do not print paper charts, we produce PDF files only and distribute them on request free of charge. The request form available on our web page.



4. HYDROGRAPHIC DATA PORTAL: <https://hydro.eltsa.lt>

- ▶ Information regarding charting products;
- ▶ Nautical publications;
- ▶ Survey areas;
- ▶ Navigational warnings;
- ▶ AtoNs;
- ▶ Inland waterways information (updates will be published at Q4 2024).

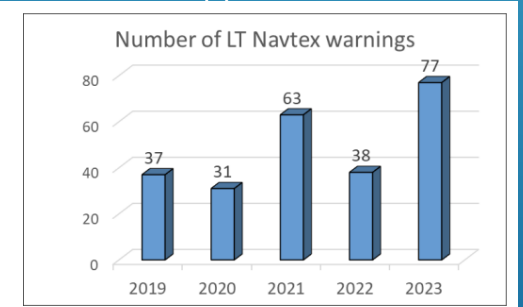
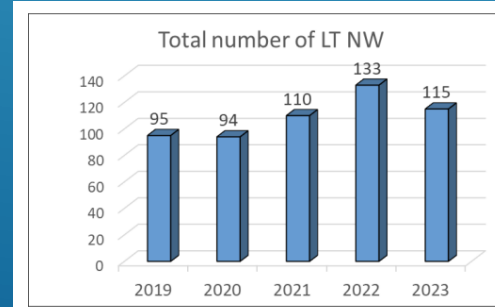
The screenshot displays the 'Navigaciniai įspėjimai' (Navigational Warnings) section of the portal. The left sidebar lists several warnings with their respective dates and descriptions:

Date	Description
087 (T) 2023-09-15	PIETRYTINĖ BALTIJOS JŪROS DALIS LIEUVOS PAKRANTĖ – KARINĖS PRATYBOS
086 (T) 2023-09-15	PIETRYTINĖ BALTIJOS JŪROS DALIS LIEUVOS PAKRANTĖ – KARINĖS PRATYBOS
085 2023-09-11	PIETRYTINĖ BALTIJOS JŪROS DALIS LIEUVOS TERITORINĖ JŪRA – DREIFUOJANTI BUJA
075 (T) 2023-08-21	PIETRYTINĖ BALTIJOS JŪROS DALIS KLAIPĖDOS JŪRŲ UOSTAS – KRANTINĖS NR. 88-98 – GILNIMO DARBAI
034 (T) 2023-03-18	PIETRYTINĖ BALTIJOS JŪROS DALIS KLAIPĖDOS JŪRŲ UOSTAS – KRANTINĖS NR. 64-65A – GILNIMO DARBAI
041 (T) 2022-05-09	PIETRYTINĖ BALTIJOS JŪROS DALIS KLAIPĖDOS UOSTO PĖLAUKA – BANGOLAUŽIŲ REKONSTRUKCIJA
038 (T) 2022-05-06	PIETRYTINĖ BALTIJOS JŪROS DALIS LIEUVOS PAKRANTĖ – MAŖYTIMO ĮRANGA
022 (T) 2022-03-23	PIETRYTINĖ BALTIJOS JŪROS DALIS LIEUVOS PAKRANTĖ – MAŖYTIMO ĮRANGA
021 (T) 2021-05-03	PIETRYTINĖ BALTIJOS JŪROS DALIS KLAIPĖDOS JŪRŲ UOSTAS – ŠVARTAVIMOSI POLLAI

The right side of the interface features a map of the Baltic Sea region, with several red and yellow markers indicating the locations of the listed navigational warnings. A red polygon highlights a specific area near the Lithuanian coast.

5. MSI

- ▶ National GMDSS VHF network along coastline for local Navigational Warnings. Service is provided by Lithuania's Navy MRCC Klaipeda on VHF in Lithuanian and English.
- ▶ NAVAREA 1 Baltic sea subarea Coordinator Sweden takes responsibility for NAVTEX Service over Lithuanian waters and messages are transmitted by Swedish transmitters (Gislovshammar [J]). All navigational warnings are also published online on the web pages: [Sjöfartsverket - Navigational Warnings \(sjofartsverket.se\)](https://www.sjofartsverket.se)
- ▶ [Navigational warnings\(elta.lt\)](https://www.elta.lt)



6. C-55

Status of hydrographic survey of waters out to the limits of the EEZ:

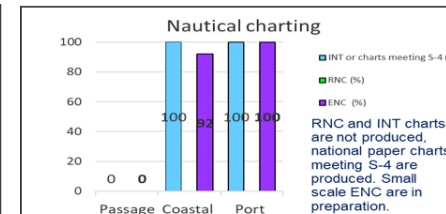
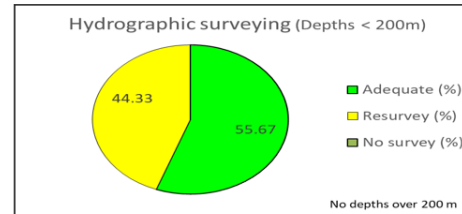
Status of surveys	Adequat (%)	Resurvey (%)	No survey (%)
Depths 0 - 200m	55.67	44.33	0
Depths > 200m	0	0	0

Status of nautical charting within the limits of the EEZ:

Chart coverage	Passage (%)	Coastal (%)	Port (%)
INT or other paper charts meeting S-4	0	100	100
RNC	0	0	0
ENC	0	92	100

Status of Paper Charts

Paper charts with depths in metres (%)	100
Paper charts referenced to a satellite datum (%)	100



Navigational information (S-53):

MSI	Y/N	Comments on MSI
Local warning	YES	can be found on https://hydro.eltsa.lt/nw/en.html
Coastal warning	YES	Transmitted by NAVAREA I Baltic Sea Sub-area Coordinator. Can be found on https://hydro.eltsa.lt/nw/en.html
Nav warning	NO	Transmitted by NAVAREA I Baltic Sea Sub-area Coordinator.
Port warning	YES	can be found on https://hydro.eltsa.lt/nw/en.html

GMDSS implementation (IMO Publication 970 - GMDSS Handbook)

GMDSS	Y/N	Comments on GMDSS
Master Plan	YES	
Area A1	YES	MRCC Klaipeda
Area A2	YES	MRCC Klaipeda
Area A3	NO	
NAVTEX	YES	Transmitted by NAVAREA I Baltic Sea Sub-area Coordinator.
SafetyNet	NO	

7. International activity

- ▶ Participating at BSHC WG activities (mostly remotely);
 - ▶ BS e-NAV project (as associated organization) for products of IHO S-101 and S-102;
 - ▶ PRIMAR TEWG (by correspondence);
 - ▶ Depth model data supply for SMA and EMODnet portal.
- 