

TRAFICOM

Finnish Transport and Communications Agency

BSHC29_C.5

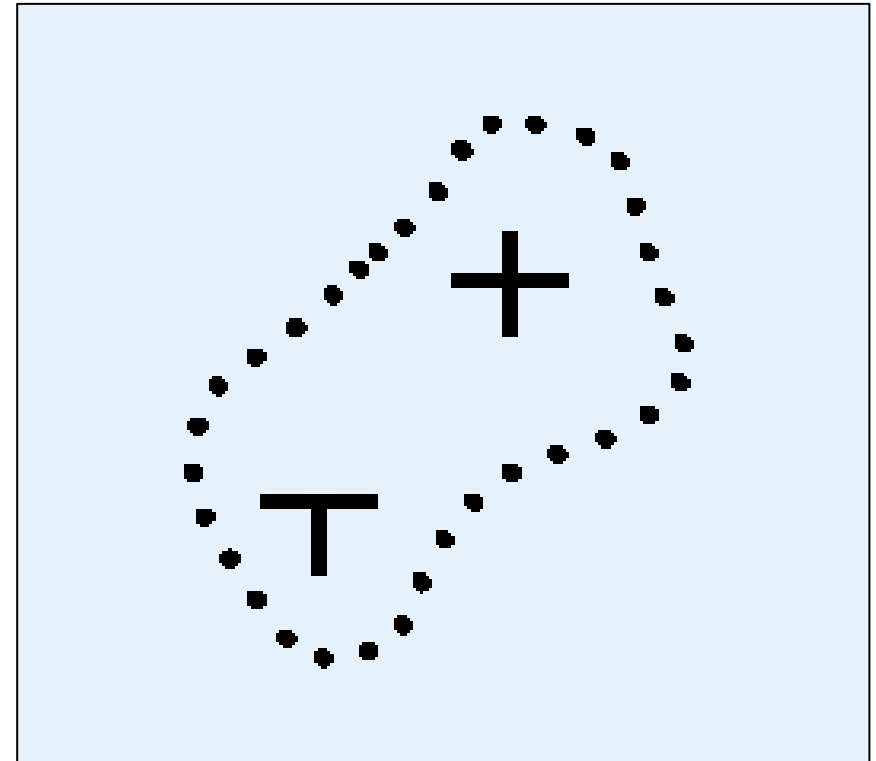
New symbology for Rocky Areas in Nautical Charts

The new way of illustrating rocky areas on nautical charts eases safe navigation

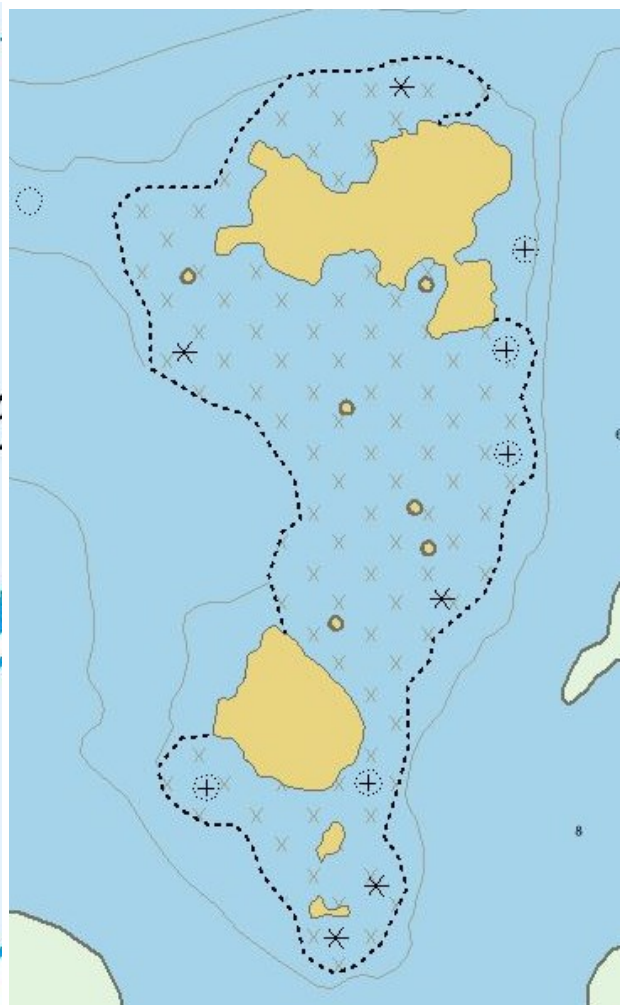
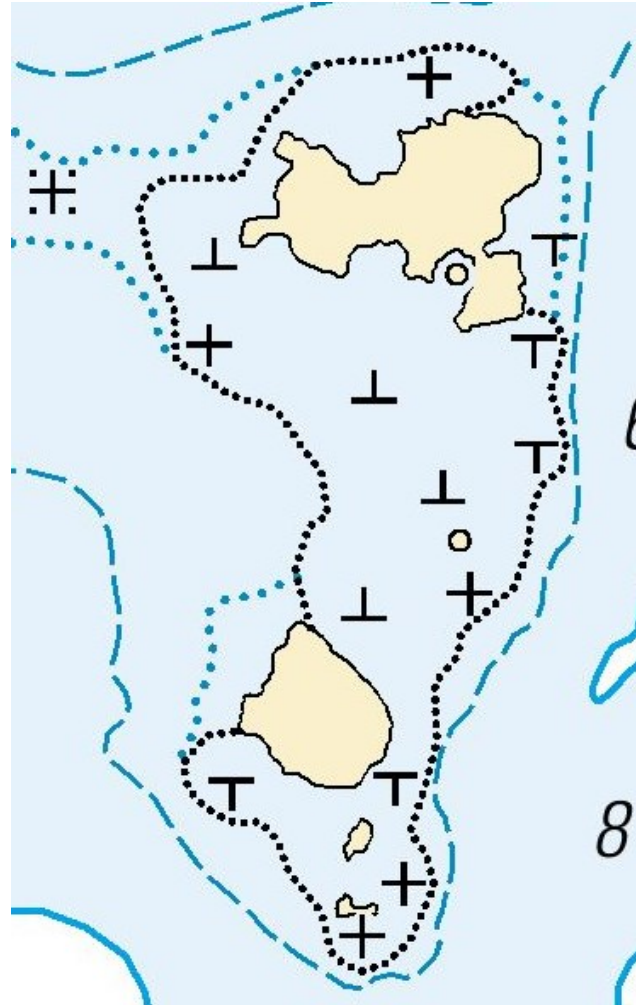
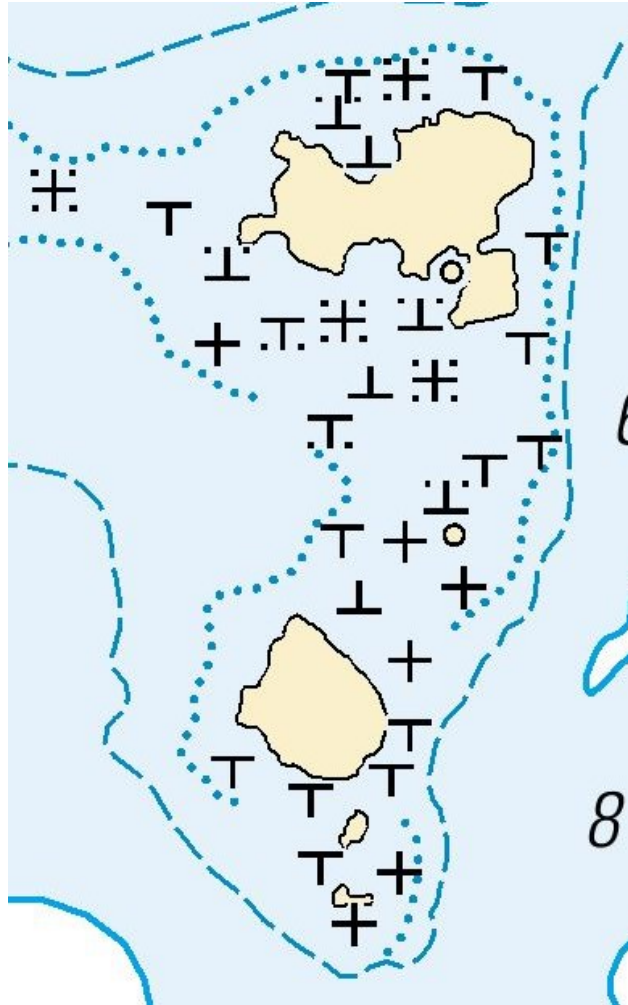


The foul area symbol

- ▶ A foul area refers to an area where all dangers to navigation are not charted individually. Navigation through the area may be hazardous (IHO S-4, B-422.9)
- ▶ The foul area is outlined with a danger curve, a black dotted line (IHO S-4 B-420.1)
- ▶ These areas are very rocky and navigating within these is very risky.



Examples



Source data for the nautical charts "rock selection".

Current printed chart.

Foul area on printed chart.

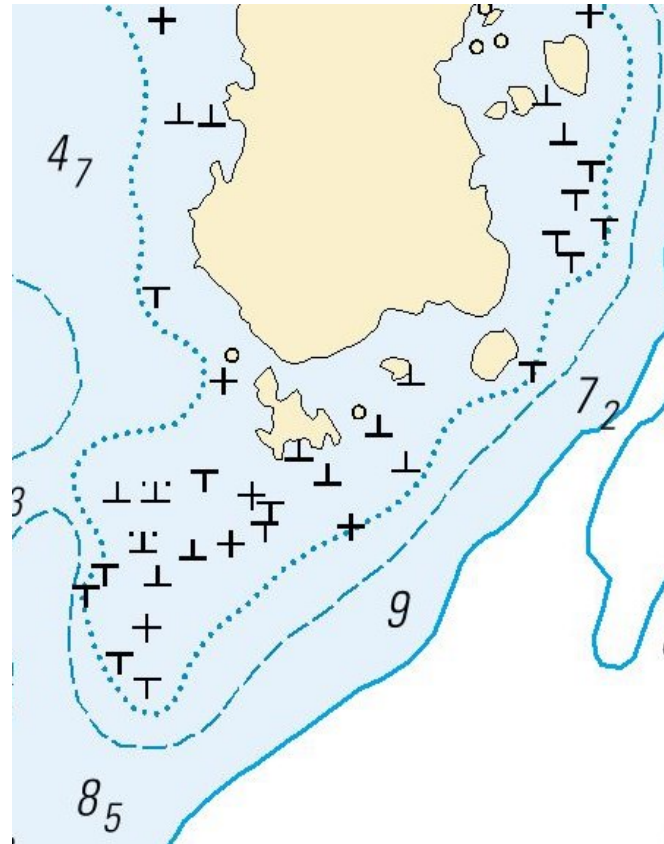
Foul area on ENC.

Examples

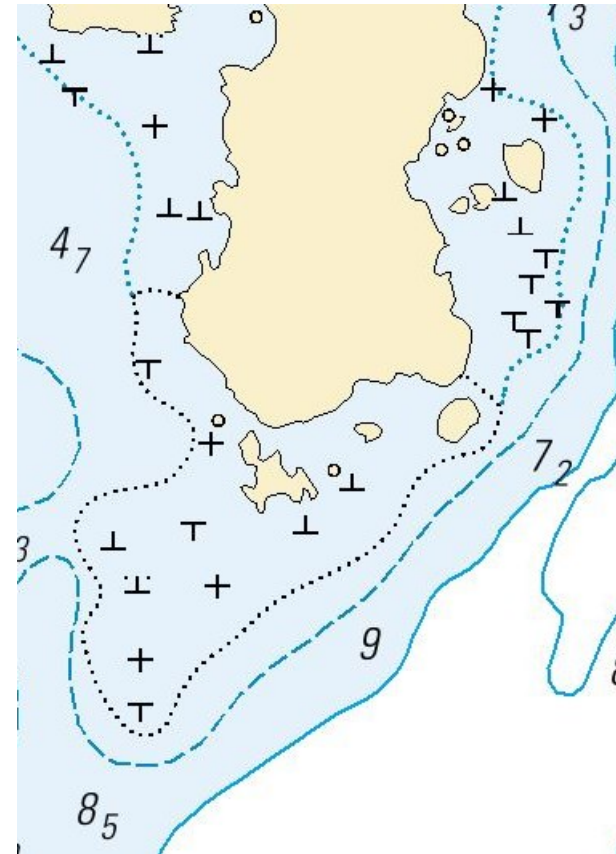
Source data for the nautical charts "rock selection".



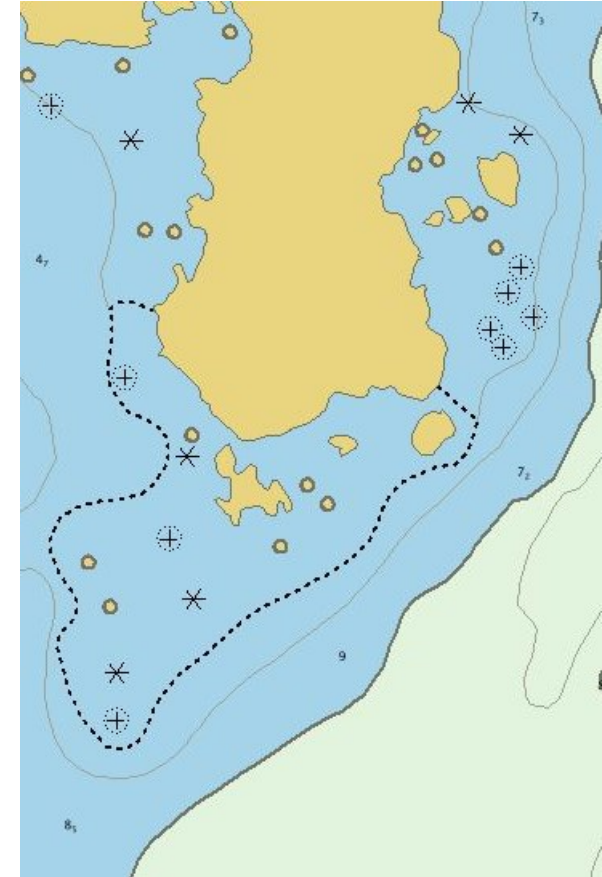
Current printed chart.



Foul area on printed chart.



Foul area on ENC.



Why?

- ▶ The new way of illustrating foul areas will reduce the number of rock symbols and the charts will be clearer and easier to read.
 - ▶ The new chart symbol will not completely replace the use of single stone symbols.
- ▶ The area symbol supports the use of chart plotters as risks related to over-zooming of the chart data, such as distortion of individual rock symbol positions are reduced.
- ▶ The new symbology makes it clearer to mariners which areas are rocky and hazardous to navigate.
- ▶ The process of creating the foul areas is partly automatized and saves time when updating nautical charts

When?

- ▶ The new symbology was put to use in the process of updating depth data in September 2023.
- ▶ ENC and printed charts-starting in summer 2024. Chart Serie E (Selkämeri-Bottenhavet) in June 2024 was the first product for yachtsman, where the new symbology was used. New symbology The new will be used next with new chart products in the Åland Sea, after that Archipelago Sea and the Gulf of Finland.

Thank you!