

Content

A	General Information	5
A 1	Maritime Traffic Control System	5
A 2	Central Reporting Point for pre-entry Reports	5
A 3	Point of Contact for Security Reports	5
A 4	Automatic Identification System (AIS)	5
C	VTS Centres	6
C 1	VTS Centre Bremerhaven	7
C 1.1	Bremerhaven Weser Traffic	8
C 2	VTS Centre Warnemünde	14
C 2.1	Warnemünde Traffic	15

A General Information**A 1 Maritime Traffic Control System****A 2 Central Reporting Point for pre-entry Reports****A 3 Point of Contact for Security Reports****A 4 Automatic Identification System (AIS)**

C VTS Centres

Overview of German VTS Areas

C 1 VTS Centre Bremerhaven

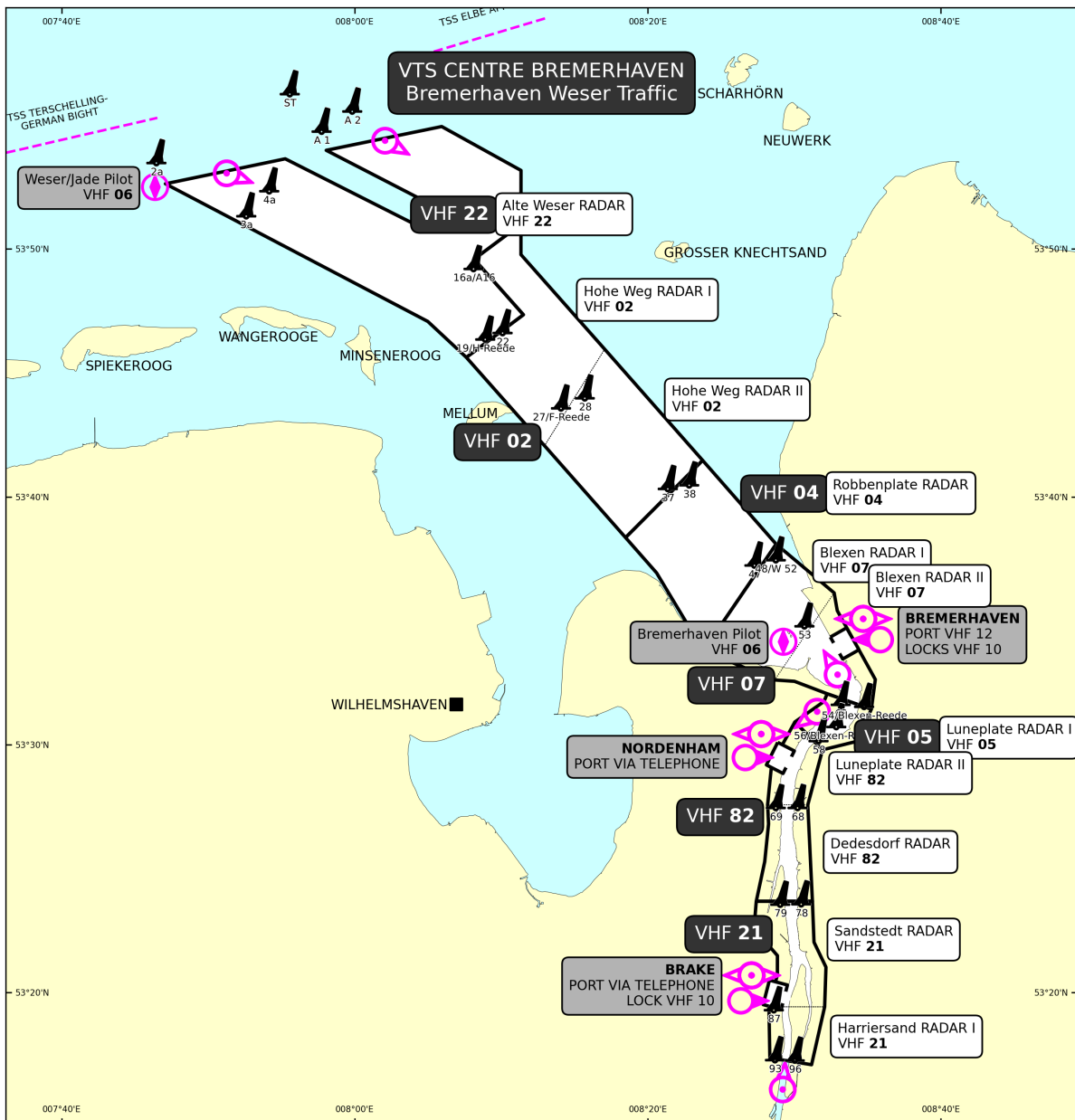
Overview Chart

C 1.1 Bremerhaven Weser Traffic

Vessel Traffic Service

Area

see diagram



Station

VTS Centre Bremerhaven

Contact Details

Call	Bremerhaven Weser Traffic
Frequency	see diagram
Telephone	+49 (0) 4 71 4 83 53 33
Fax	+49 (0) 4 71 4 83 52 00
E-mail	vts-bremerhaven@wsv.bund.de

Continuous Listening Watch

when entering on VHF working channels and VHF channel 16

Reports



Sailing Plan

Who

- vessels of 50 m in length or more, including pushed or towed composite units
- vessels carrying dangerous goods in bulk (gas / chemicals / petroleum / petroleum products)
- unloaded tankers if not cleaned, degassed or completely inerted after carrying petroleum / petroleum products / chemicals with a flashpoint below 35 °C

When/Where

- before entering the VTS area
 - from sea (if not already reported by SP to German Bight Traffic)
 - from a harbour or berth within the VTS area

to Whom

Bremerhaven Weser Traffic

What

- A vessel's name and call sign
- D vessel's position
- U vessel's length (metres), beam (decimetres) and type
- O vessel's draught (decimetres)
- G port of departure
- I port of destination
- P indication if liquefied gases, chemicals, or petroleum / petroleum products are / were carried in bulk, and in case: type, quantity, UN-number and if tanks are not cleaned or if they are completely inerted
- Q indication of deficiencies, restrictions of manoeuvrability
- T names of the vessel's owner or the latter's agents
- W number of persons on board



Position Report

Who

vessels mandatory to report as for Sailing Plan

When/Where

- when entering the VTS area
 - at reporting points shown on diagram

to Whom

Bremerhaven Weser Traffic

What

- A vessel's name and call sign
- B passing time
- D position
- F speed

Deviation Report

Who

vessels mandatory to report as for Sailing Plan

When/Where

in case of amendments of Sailing Plan (e. g. when entering / leaving an anchorage)

to Whom

Bremerhaven Weser Traffic

What

amendments of Sailing Plan

Incident Report

Who

all vessels

When/Where

in case of an incident impairing safety or environment

to Whom

Bremerhaven Weser Traffic

What

details of incident, in case of DG = dangerous goods report / HS = harmful substances report / MP = marine pollutants report

Rules

presuppositions for tankers carrying gas / chemicals / petroleum / petroleum products when entering the area of German Traffic Regulations for Navigable Maritime Waterways

all tankers

- radar and VHF in operational state

tankers up to 2,000 tdw

- visibility between 500 m and 1,000 m

tankers with more than 2,000 tdw

- visibility more than 1,000 m

Services

Information Service

situation broadcast

times

- every h + 20 min

frequencies

- see diagram

languages

- English and German

content

- information relevant to the safe passage through the VTS area
- general fairway and traffic situation (e. g. weather conditions, casualties, dredging operations, pilot information)

Navigational Assistance Service

times

- if instructed by VTS Centre Bremerhaven Weser Traffic
- if visibility is less than 2,000 m
- if pilot vessel is in a sheltered position
- if light-buoys are withdrawn due to ice
- if required by traffic situation
- if requested by a vessel

frequencies

- see diagram

languages

- German
- English on request

content

- information, warnings and advice to single vessels or to the shipping in general to avoid dangers and to prevent accidents and / or threat to the environment

- regular information about position and surrounding traffic

rules and regulations

- when requesting, give A (name, call sign) and D (position) for identification

Traffic Regulation Service

by instruction

- regulatory measures to prevent accidents and / or threat to the environment
traffic management

Maritime Assistance Service**in the event of an incident involving a ship**

- receive the reports, consultations and notifications

if a report discloses an incident that may give rise to a situation where the ship is in need of assistance

- monitor the ship's situation

serve as the point of contact

- between the master and the coastal State if the ship's situation requires exchanges of information between the ship and the coastal State other than a distress situation that could lead to a search and rescue operation
- between those involved in a marine salvage operation undertaken by private facilities at the request of the company and the coastal State if the coastal State considers that it should monitor the conduct of the operation

Pilotage**Pilot District**

River Weser

Pilot Service**pilotage compulsory**

- tankers carrying gas / chemicals / petroleum / petroleum products in bulk, or unloaded tankers, if not cleaned, degassed or completely inerted after having carried petroleum / petroleum products or chemicals with a flashpoint below 35 °C
- other vessels of 90 m in length or 13 m in beam; 8 m in draught or more if bound for Bremerhaven (Geeste estuary resp. Blexen Reede), 6.50 m in draught or more if bound for destinations above Bremerhaven

Contact Details**Bremerhaven Pilot Station**

Call Bremerhaven Weser Pilot
Frequency VHF channel 06
Telephone +49 (0) 4 71 94 42 42
Fax +49 (0) 4 71 9 44 24 39
E-mail dispo@weserjadepilot.de
Internet www.weserjadepilot.de

Bremen Pilot Station

Telephone +49 (0) 4 21 39 40 44
Fax +49 (0) 4 21 38 22 43

Pilot Request

Arrival

Who

pilotage compulsory vessels

When/Where

at least 12 hrs before arrival at boarding place (also request river pilots for Weser ports between Bremerhaven and Bremen)

to whom

Bremerhaven Pilot Station

What

- vessel's name, call sign, length, beam and gross tonnage (GT)
- actual draught on arrival/departure (in decimetres)
- pilot boarding position
- ETA/ETD at/from pilot boarding position
- destination of pilotage required
- indication whether transfer by pilot vessel or by helicopter
- port of destination
- port of departure
- freeboard and distance from pilot door to the waterline

Departure

Who

pilotage compulsory vessels

When/Where

at least 3 hrs before departure (also request sea pilots for Weser estuary off Bremerhaven)

- departures between 1900-0800 request pilot before 1700

to whom

Bremerhaven Pilot Station, Bremen Pilot Station

What

- vessel's name, call sign, length, beam and gross tonnage (GT)
- actual draught on arrival/departure (in decimetres)
- pilot boarding position
- ETA/ETD at/from pilot boarding position
- destination of pilotage required
- indication whether transfer by pilot vessel or by helicopter
- port of destination
- port of departure
- freeboard and distance from pilot door to the waterline

Pilot Boards

Boarding place

- near light-buoy "3 / Jade 2" (Weser estuary and Bremerhaven)
- near light-buoy "57" (ports within Bremerhaven / Bremen range)

C 2 VTS Centre Warnemünde

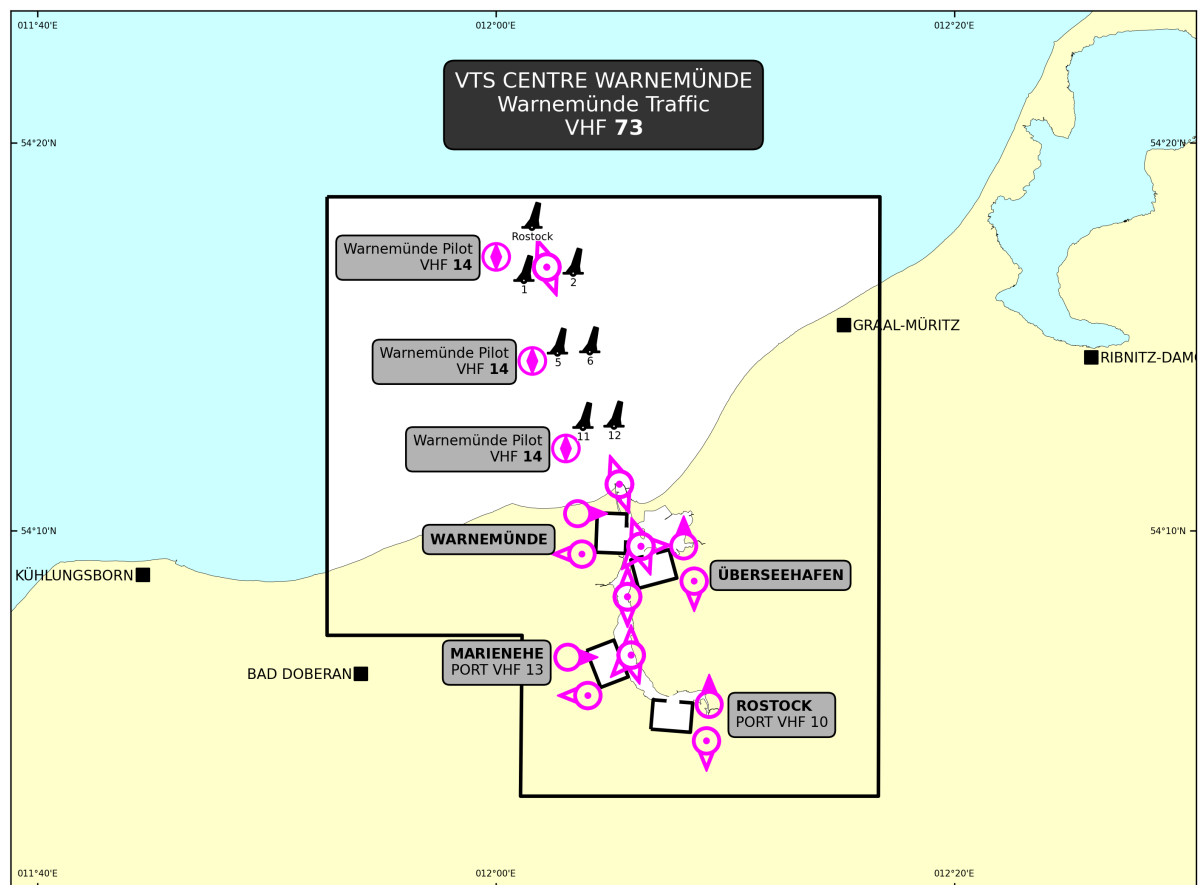
Overview Chart

C 2.1 Warnemünde Traffic

Vessel Traffic Service

Area

see diagram



Station

VTS Centre Warnemünde

Contact Details

Call	Warnemünde Traffic
Frequency	see diagram
Telephone	+49 (0) 3 81 20 67 18 41
Telephone	+49 (0) 3 81 20 67 18 42
Fax	+49 (0) 3 81 20 67 18 45
E-mail	vkz-warnemuende@wsv.bund.de

Continuous Listening Watch

when entering on VHF working channels and VHF channel 16

Reports



Sailing Plan

Who

- vessels of 30 m in length or more, including pushed or towed composite units
- vessels carrying dangerous goods in bulk (gas / chemicals / petroleum / petroleum products)
- unloaded tankers if not cleaned, degassed or completely inerted after carrying petroleum / petroleum products / chemicals with a flashpoint below 35 °C

When/Where

- 30 min before entering the fairway for Rostock
- before leaving a harbour or berth within the VTS area

to Whom

Warnemünde Traffic

What

- A vessel's name and call sign
- D vessel's position
- U vessel's length (metres), beam (decimetres) and type
- O vessel's draught (decimetres)
- G port of departure
- I port of destination
- P indication if liquefied gases, chemicals, or petroleum / petroleum products are / were carried in bulk, and in case: type, quantity, UN-number and if tanks are not cleaned or if they are completely inerted
- Q indication of deficiencies, restrictions of manoeuvrability
- T names of the vessel's owner or the latter's agents



Position Report

Who

vessels mandatory to report as for Sailing Plan

When/Where

- at reporting points shown on diagram
- after pilot embarkation
- when entering or leaving the fairway
- when turning in the Überseehafen turning basin
 - beginning and completion of the turning manoeuvre

to Whom

Warnemünde Traffic

What

- A vessel's name and call sign
- B passing time
- D position
- F speed

Deviation Report**Who**

vessels mandatory to report as for Sailing Plan

When/Where

in case of amendments of Sailing Plan (e. g. when entering / leaving an anchorage)

to Whom

Warnemünde Traffic

What

amendments of Sailing Plan

Incident Report**Who**

all vessels

When/Where

in case of an incident impairing safety or environment

to Whom

Warnemünde Traffic

What

details of incident, in case of DG = dangerous goods report / HS = harmful substances report/ MP = marine pollutants report

R u l e s**presuppositions for tankers carrying gas / chemicals / petroleum / petroleum products when entering the area of German Traffic Regulations for Navigable Maritime Waterways****all tankers**

- visibility more than 1,000 m
- radar and VHF in operational state

tankers up to 2,000 tdw

- visibility between 500 m and 1,000 m

tankers exceeding 2,000 tdw, but not exceeding 140 m in length or 8.50 m in draught

- only with permission of the VTS Centre

S e r v i c e s**Information Service****situation broadcast****times**

- every h + 15 min
- single reports if the VTS considers it necessary or on request

frequencies

- see diagram

languages

- English and German

content

- information relevant to the safe passage through the VTS area
- general fairway and traffic situation (e. g. weather conditions, casualties, dredging operations, pilot information)

Navigational Assistance Service

- not provided in the VTS area

Traffic Regulation Service**by instruction**

- regulatory measures to prevent accidents and / or threat to the environment
traffic management

Maritime Assistance Service**in the event of an incident involving a ship**

- receive the reports, consultations and notifications

if a report discloses an incident that may give rise to a situation where the ship is in need of assistance

- monitor the ship's situation

serve as the point of contact

- between the master and the coastal State if the ship's situation requires exchanges of information between the ship and the coastal State other than a distress situation that could lead to a search and rescue operation
- between those involved in a marine salvage operation undertaken by private facilities at the request of the company and the coastal State if the coastal State considers that it should monitor the conduct of the operation

Pilotage**Pilot District**

Rostock Warnemünde and River Warnow

Pilot Service**pilotage compulsory**

- tankers carrying gas / chemicals / petroleum / petroleum products in bulk, or unloaded tankers, if not cleaned, degassed or completely inerted after having carried petroleum / petroleum products or chemicals with a flashpoint below 35 °C
- other vessels
 - from Rostock Approach to the berth No 60 Warnowpier of 100 m in length or 15 m in beam or 7.5 m in draught or more
 - from berth No 60 Warnowpier to light-buoy "59/M2" of 80 m in length or 11 m in beam or 6 m in draught or more
 - from light-buoy "59/M2" upriver to Stadthafen Rostock of 60 m in length or 10 m in beam or 4.5 m in draught or more

Contact Details

Warnemünde Pilot Station

Call Warnemünde Pilot
Frequency VHF channel 14, 16
Telephone +49 (0) 3 81 2 06 03 50
Fax +49 (0) 3 81 2 06 03 51
E-mail station@rostockpilot.de
Internet www.wismar-rostock-stralsund-pilots.de

Pilot Vessel

Call Warnemünde Pilot
Frequency VHF channel 14

Pilot Request

Arrival

Who

pilotage compulsory vessels

When/Where

at least 3 hrs before arrival at boarding position

to whom

Warnemünde Pilot Station

What

- vessel's name, call sign
- length, beam and gross tonnage (GT)
- ETA at pilot boarding position
- destination of pilotage required
- actual draught
- speed
- agency

Departure

Who

pilotage compulsory vessels

When/Where

at least 3 hrs before departure

- departures between 1900-0700 request pilot before 1700

to whom

Warnemünde Pilot Station

What

- vessel's name, call sign
- length, beam and gross tonnage (GT)
- ETA at pilot boarding position
- destination of pilotage required
- actual draught
- speed
- agency

Pilot Boards

Boarding place

- near light-buoy “Rostock” (vessels over 11.58 m draught)
- near light-buoy “5” (vessels over 6.5 m draught)
- near light-buoy “11” (vessels of 6.5 m draught or less)