

6TH EAHC STEERING COMMITTEE

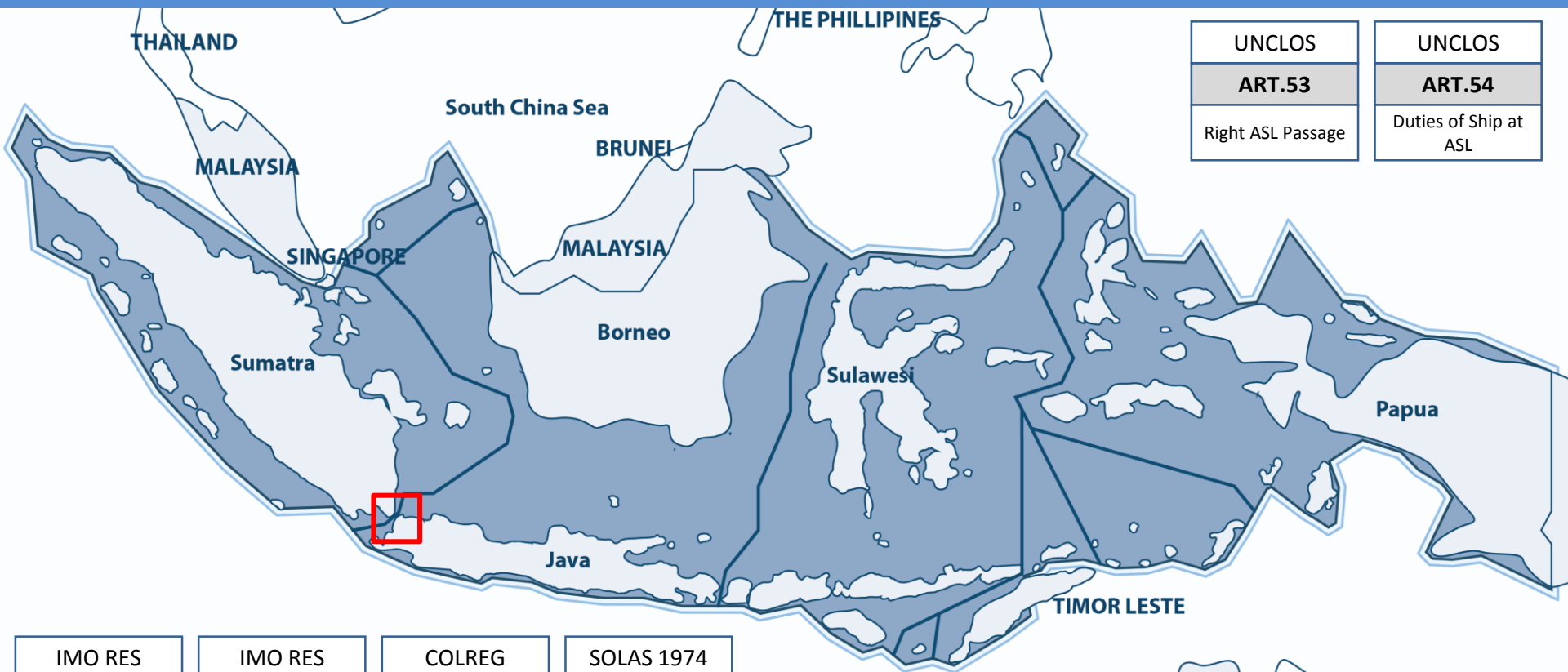
**Establishment of *Traffic Separation Schemes*
and Associated Routeing Measures
in Sunda and Lombok Straits**



Bali, 21st of February 2019



INTERNATIONAL SHIPPING ROUTES IN INDONESIAN WATERS



UNCLOS
ART.53
Right ASL Passage

UNCLOS
ART.54
Duties of Ship at ASL

IMO RES
A.572(14)
General Provision ASL

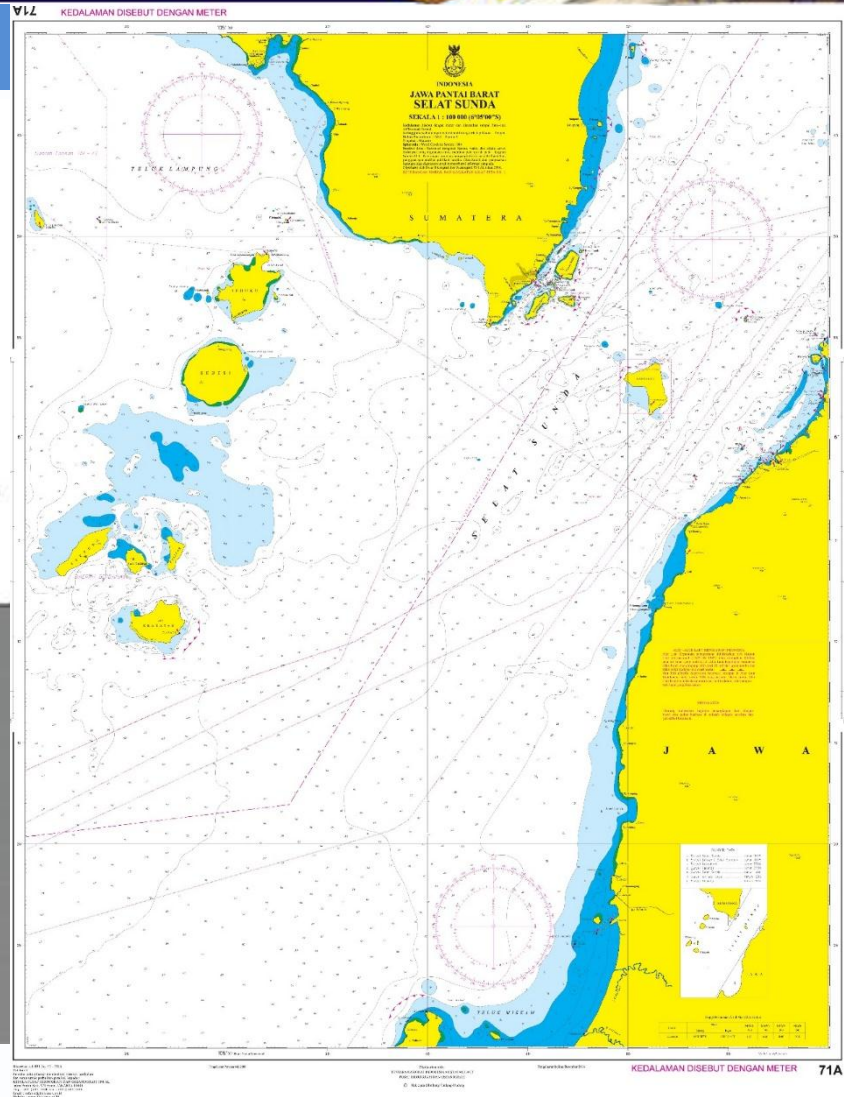
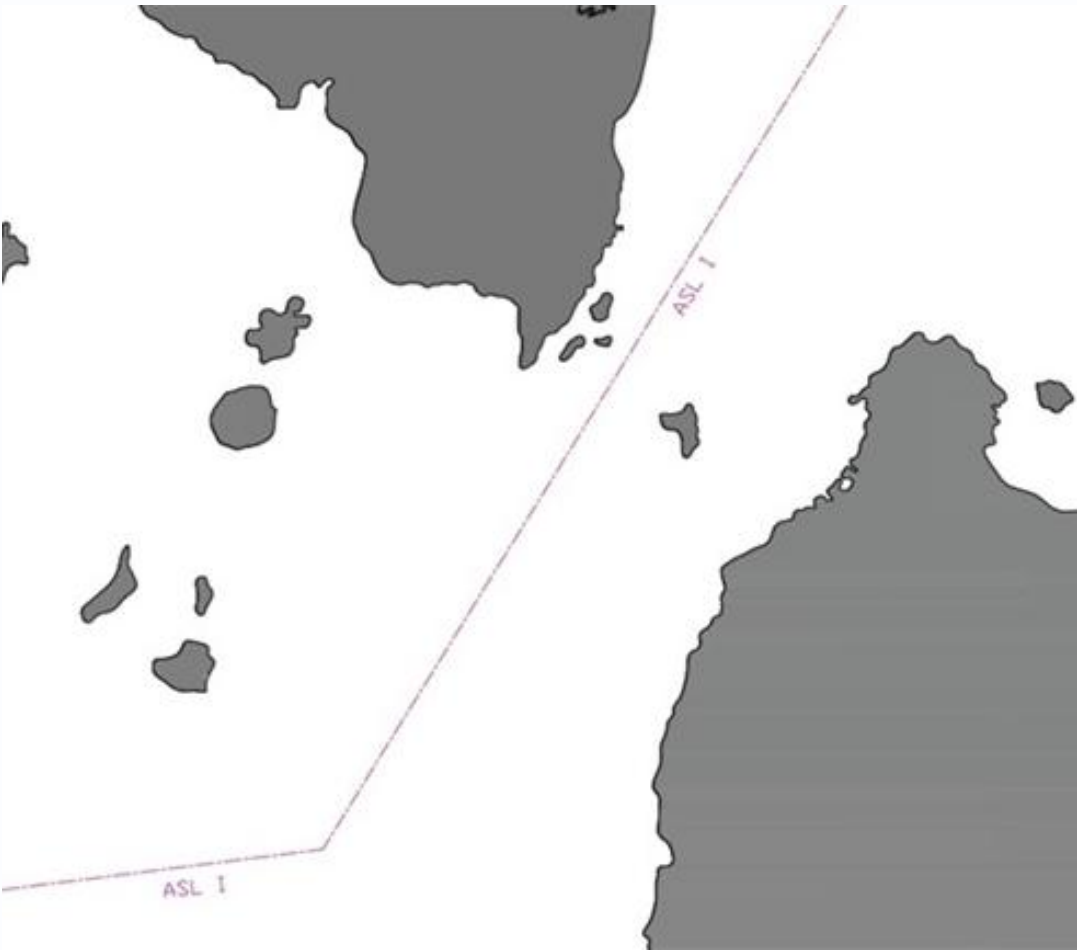
IMO RES
MSC.72(69)
Adoption ASL

COLREG
RULE.10
TSS

SOLAS 1974
CH.5 REG.10
Ship Routeing



SUNDA STRAIT | IASL-I





MAJOR INCIDENTS in SUNDA STRAIT



Source : National Transport Safety Committee

Collision between MT Norgas Cathinka and MV Bahuga Jaya in 2012



MAJOR INCIDENTS in SUNDA STRAIT



Source : National Transport Safety Committee

Impact of collision on the hull of Passenger Ship MARISA NUSANTARA after collided with a general cargo QIHANG ship in 2014 at Sunda Strait



MAJOR INCIDENTS in SUNDA STRAIT

Grounded of Container ship MV Hanjin Aqua to Koliot Reefs in 2015

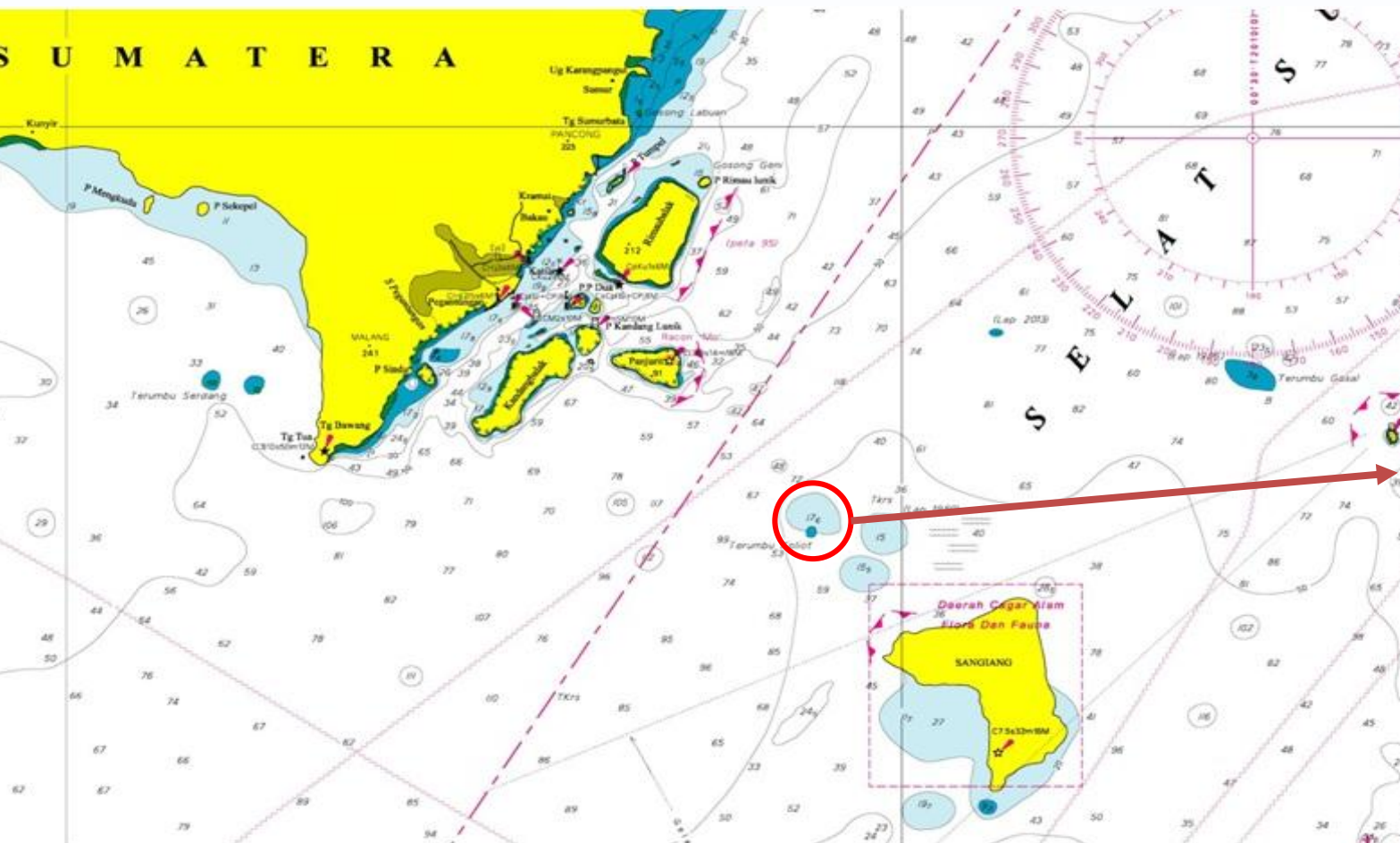


Source : National Transport Safety Committee

**Grounding of HANJIN AQUA (IMO Nr. 9632480)
at Koliot Reefs, Sunda Strait, Merak Republic of
Indonesia, 4 December 2015**



ISOLATED DANGER - KOLIOT REEF



**KOLIOT REEF
LIGHT BEACON**



SANGIANG NATURAL TOURISM PARK AS MARINE PROTECTED AREA



**2.8 NM from
IASL-I**

720 HA Island

Natural Tourism Park

Coral reefs & Marine Biota



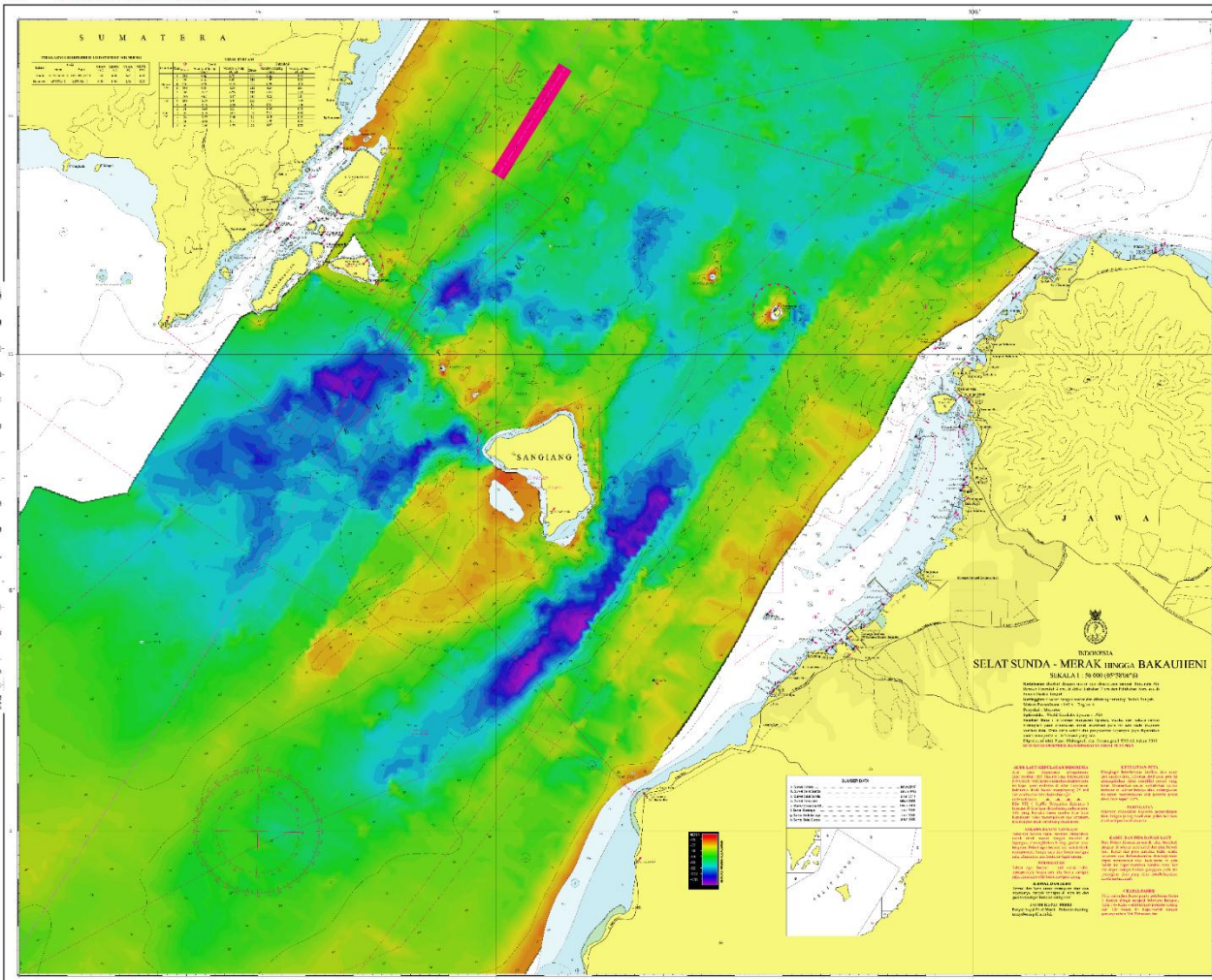
HYDROGRAPHIC SURVEY WAS DONE BY PUSHIDROSAL





HYDROGRAPHIC SURVEY IN SUNDA STRAIT

021 KEDALAMAN DISEBUT DALAM METER



021 KEDALAMAN DISEBUT DALAM METER

FOR ILLUSTRATION PURPOSE ONLY

021 KEDALAMAN DISEBUT DALAM METER

021 KEDALAMAN DISEBUT DALAM METER

170



OBJECTIVES OF ESTABLISHMENT OF TSS

1

Reduce the number of head-on situations to increase the safety of navigation, by separating opposing traffic streams in the area

2

Reduce, if not eliminate, the risk of accidental ship grounding by keeping ships well away from the coral reef atolls

3

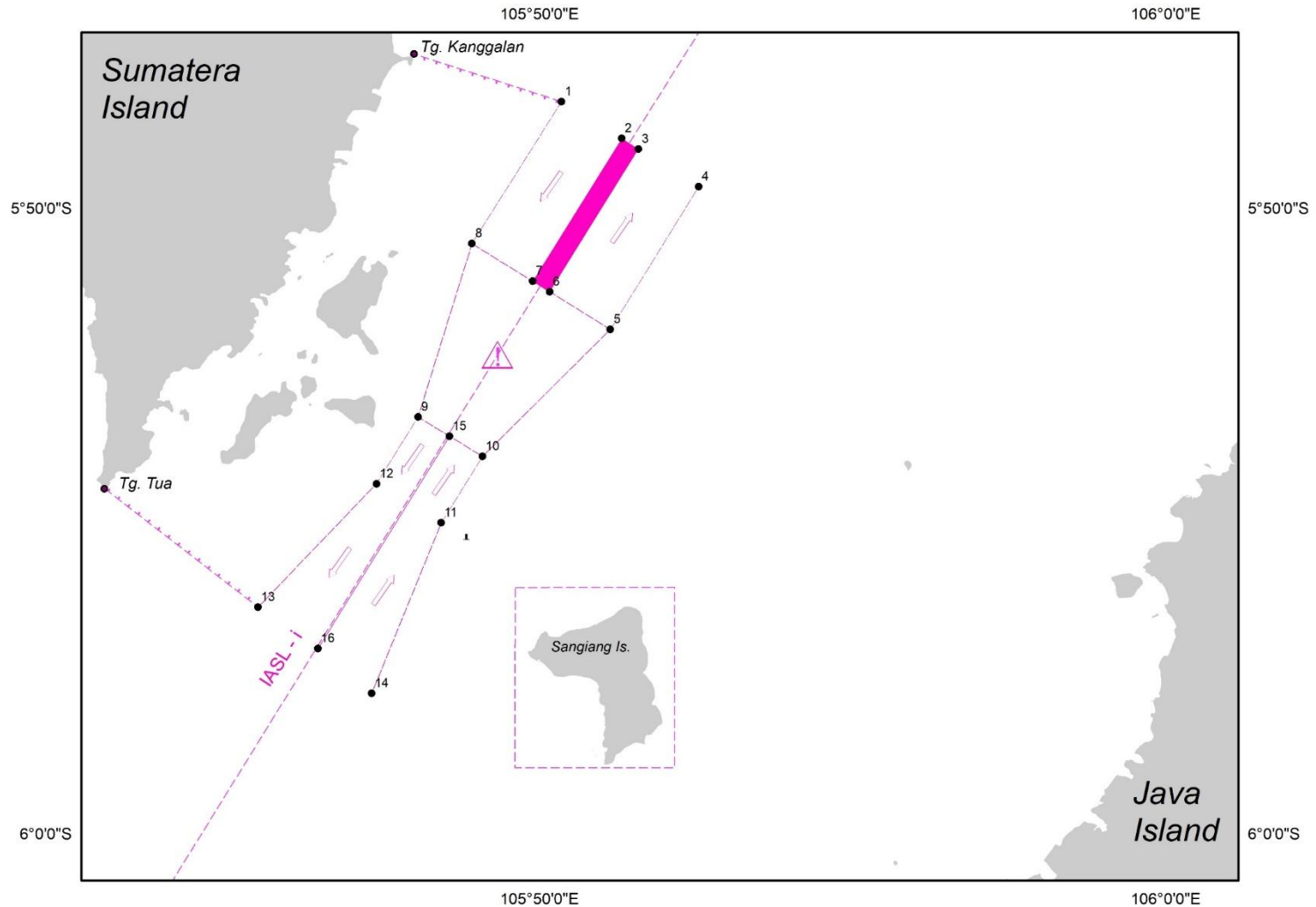
Reduce, if not eliminate, the risk of collision between ships by recommending one precautionary area

4

Ensure that ships follow the routes that are absolutely free from the known dangers posed by the coral reef atolls of Terumbu Koliot by AtoN.



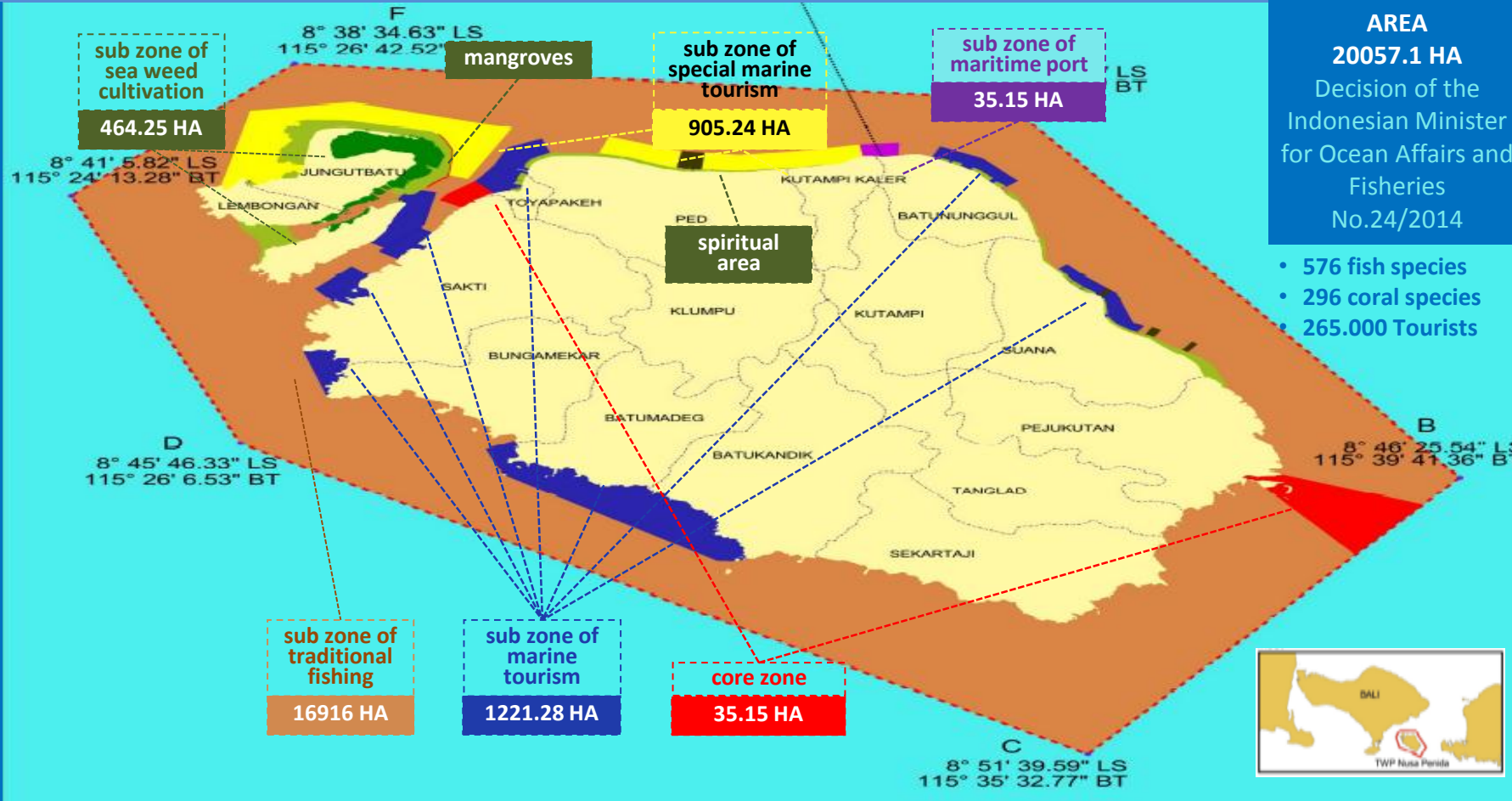
THE TRAFFIC SEPARATION SCHEME IN SUNDA STRAIT PROPOSED IN NCSR-6





KEY ENVIRONMENT ATTRIBUTES

NUSAPENIDA ISLAND





KEY ENVIRONMENT ATTRIBUTES | GILI ISLANDS

DESIGNATED CONSERVATION AREA

2273.56 HA

Decision of the Indonesian Minister for Ocean Affairs & Fisheries No.57/2014

511 FISH SPECIES

Allen & Werner Calculation Formula 2002

surrounded by rich type of coral reef ecosystem

296 CORAL SPECIES

101.27 HA

GILI TRAWANGAN

58.14 HA

GILI MENO

76.84 HA

GILI AYER

MARINE TOURISM PARK

445.000 TOURISTS

GILI AYER

GILI MENO

GILI TRAWANGAN



LEGEND

PROTECTION



NO BOAT MOORING IN THIS AREA, NO DIVING OR SNORKELLING WITHOUT THE PROPER PERMIT, NO FISHING.

NO FISHING



TOURISM AND RESEARCH DIVING PERMITTED BUT NO FISHING

SUSTAINABLE FISHING



FISHING WITH NETS AND LINES PERMITTED OF ANY TELEOSTEI SPECIES

REHABILITATION



TOURIST AND RESEARCH ZONE FOR CORAL PROTECTION, NO FISHING

CORAL SPECIES PROTECTION



NO TOURIST OR FISHING ACTIVITIES ALLOWED TO PROTECT BLUE CORAL

HARBOUR



SPECIALISED FOR BOAT TRAFFIC AND DOCKING, NO TOURIST ACTIVITIES PERMITTED DURING THE DAY DUE TO SAFETY CONCERNS

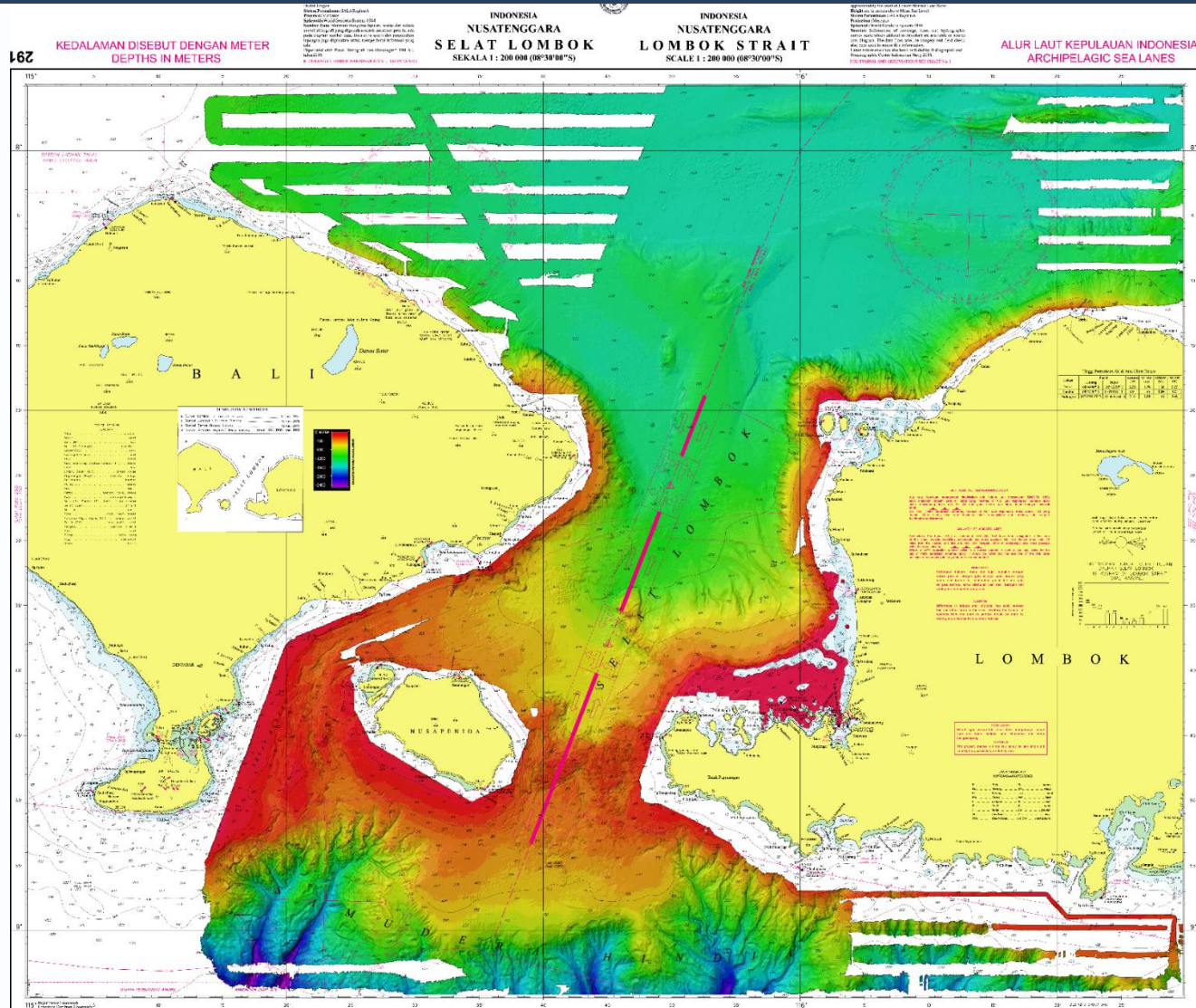
MAP SOURCE:



Ministry of Environment and Forestry

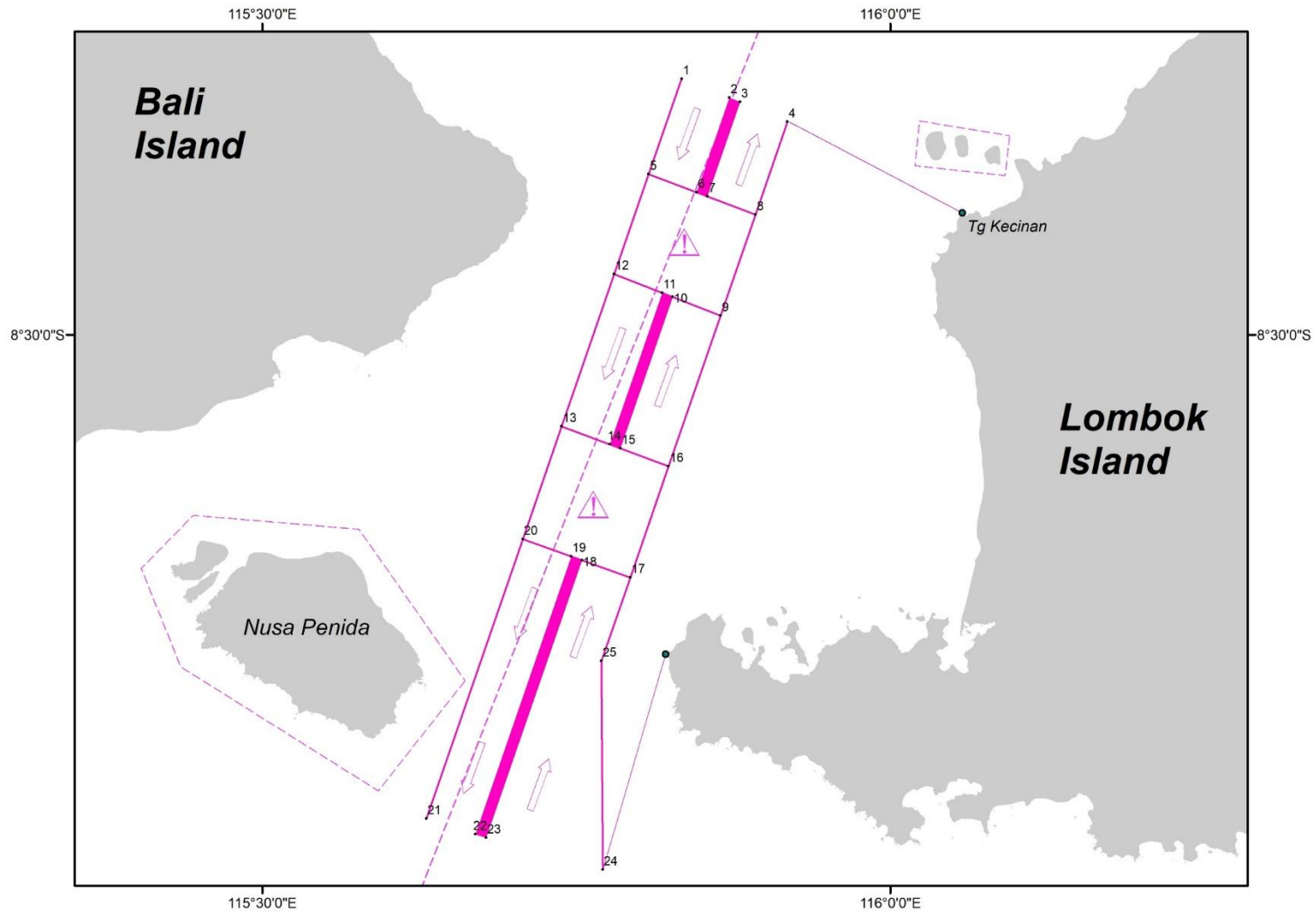


HYDROGRAPHIC SURVEY IN SUNDA STRAIT





THE TRAFFIC SEPARATION SCHEME IN SUNDA STRAIT PROPOSED IN NCSR-6





Thank you

&

Terima Kasih