

Commission hydrographique de l'Atlantique oriental / Eastern Atlantic Hydrographic Commission

# International charting coordination working group (ICC-WG)

Présenté par la France (coordinateur cartographique pour la Région G)  
Presented by France (as Region G charting coordinator)



IHO

International  
Hydrographic  
Organization

16<sup>th</sup> EAHC - September 29<sup>th</sup> to October 1<sup>st</sup> 2021 - Lisbon

## 1. Opening

- France (Shom) – Regional Charting Coordinator (RCC) for the Region G
  - Coordinator : Capt Pierre-Yves Dupuy [pierre-yves.dupuy@shom.fr](mailto:pierre-yves.dupuy@shom.fr)
  - Supported by : Lt Cdr Julien Smeeckaert [julien.smeeckaert@shom.fr](mailto:julien.smeeckaert@shom.fr)

Generic email address : [regionGcoord@shom.fr](mailto:regionGcoord@shom.fr)

## 2. Approval of Agenda

## 3. Matters arising since the 15<sup>th</sup> EAtHC conference

ICC-WG Action list to be updated



**IHO**

International  
Hydrographic  
Organization

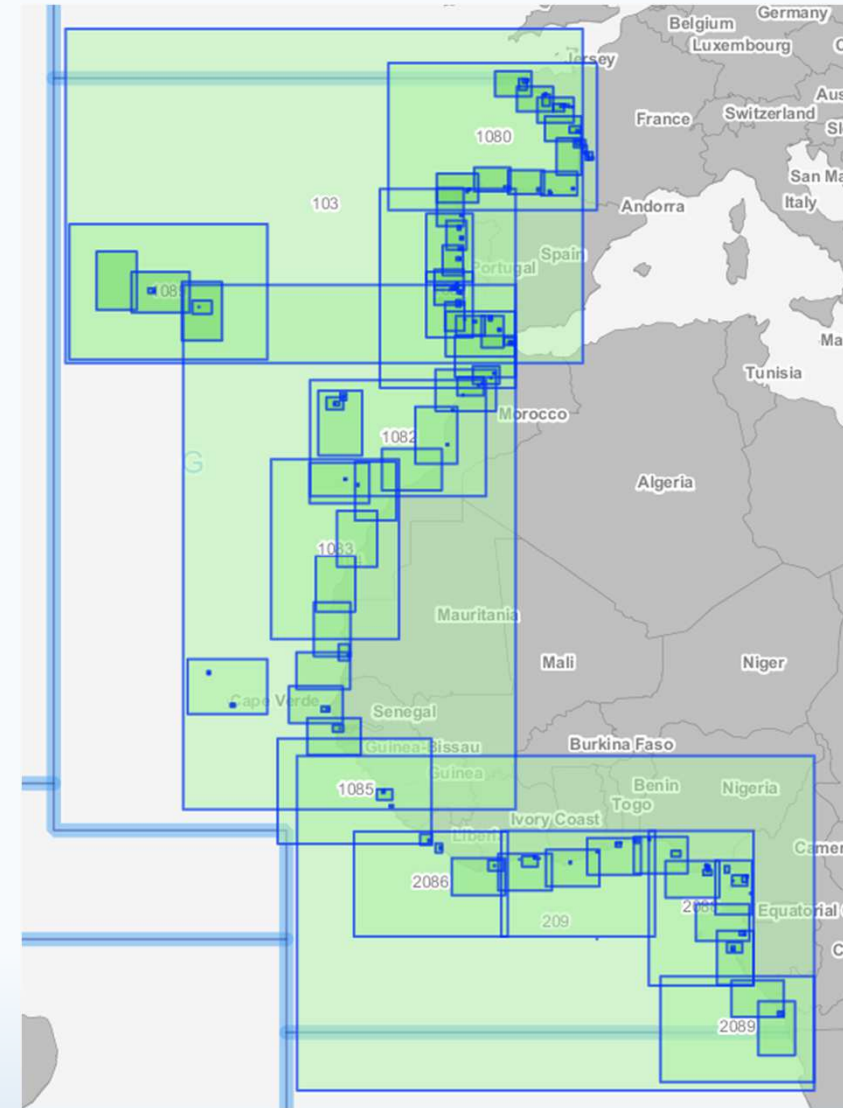
16<sup>th</sup> EAtHC - September 29<sup>th</sup> to October 1<sup>st</sup> 2021 - Lisbon

## 4. Region G INT Chart Scheme

### 4.1 Evolution of the regional INT catalogue

**Catalog updated with Region G ICC-WG CL 01/2021 & 02/2021**  
**Several new planned charts from updated schemes**

CHAtO / <i>EAtHC</i>	14 <sup>th</sup>	15 <sup>th</sup>	Interim 16 <sup>th</sup>	<b>16<sup>th</sup></b>
Total Cartes INT <i>Total INT charts</i>	172	173	173	<b>199</b>
Cartes INT produites <i>Produced INT charts</i>	139	141	142	<b>146</b>
Cartes INT planifiées <i>Planned INT charts</i>	33	32	31	<b>53</b>
Ratio	80%	82%	82%	<b>73%</b>



<http://chart.iho.int:8080/iho/main.do#>



**IHO**

International  
Hydrographic  
Organization

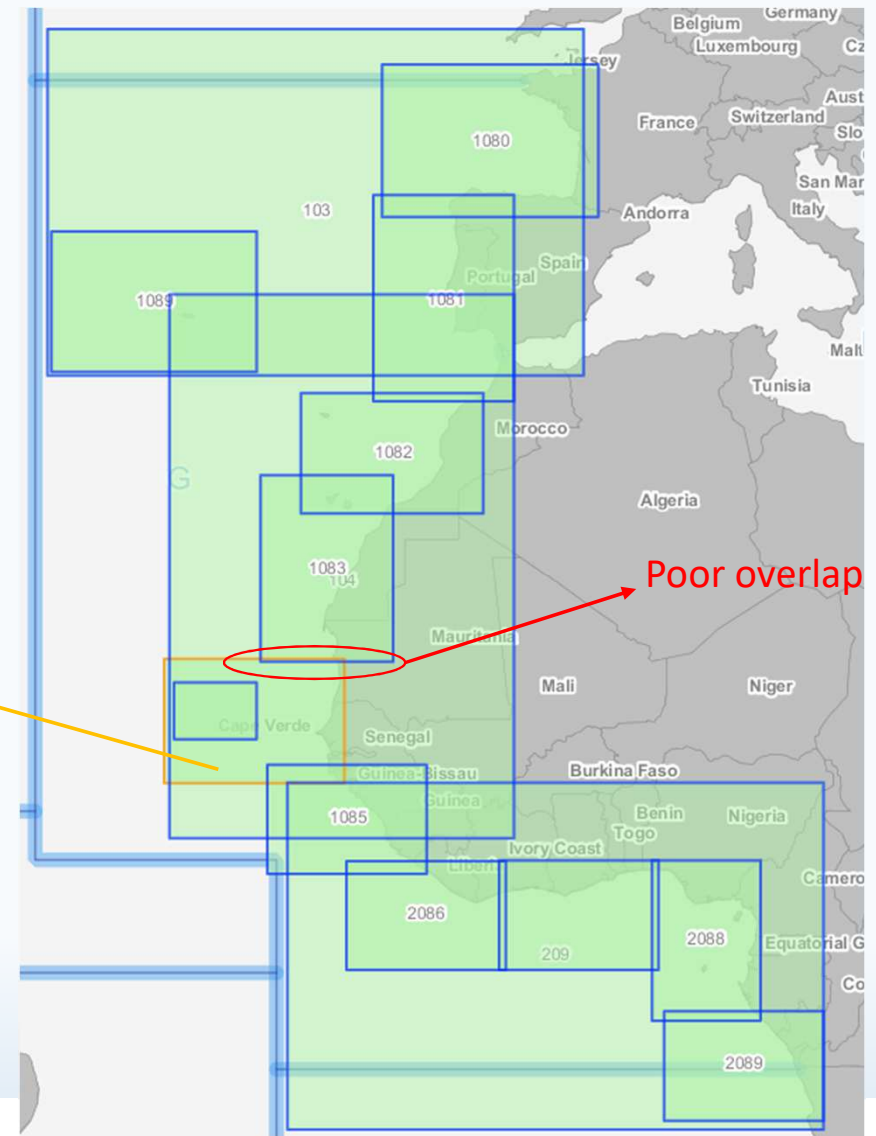
16<sup>th</sup> EAtHC - September 29<sup>th</sup> to October 1<sup>st</sup> 2021 - Lisbon

## 4. Region G INT Chart Scheme

### 4.1 Evolution of the regional INT catalogue

#### Chart Scale : Overview

INT 1084 ENC		X
Nation Title	De Trimiris à Guiné-Bissau e Cabo Verde	
Nation Chart No	62101	
Inclusion Year		
First Edition Year		
New Edition Year		
Producers	PT	
Chart Date Year		
Printer Nation		
Print Chart No		
Print format		
Frame Dimensions		
Scale	1 100 000	
INT Area	G	
Producing Status	Sched	
Record Update Date		
Region Version	4.0.4 JUN. 2021	



IHO

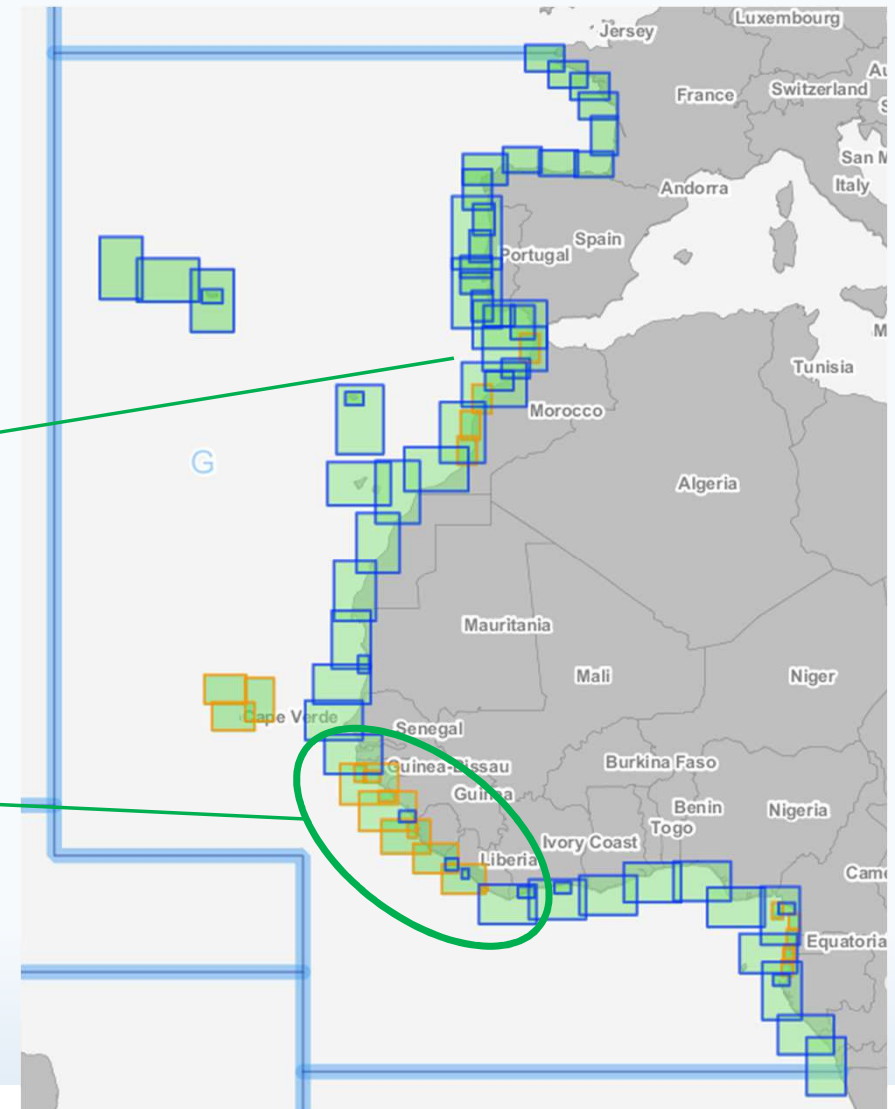
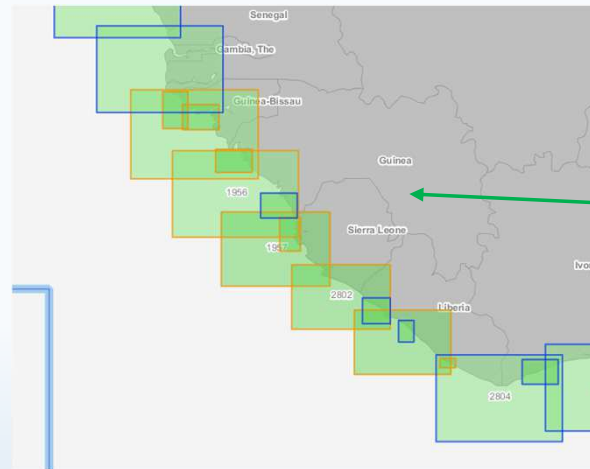
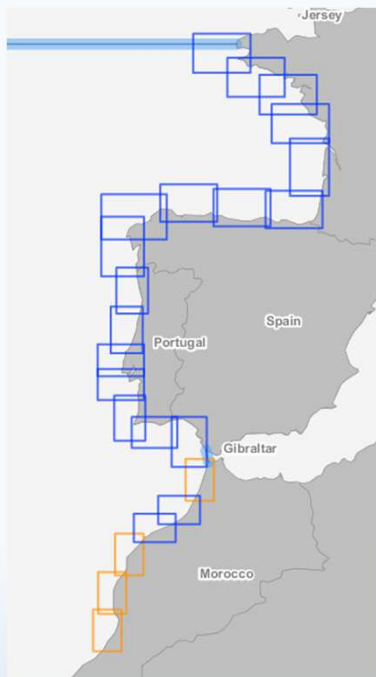
International  
Hydrographic  
Organization

16<sup>th</sup> EAHC - September 29<sup>th</sup> to October 1<sup>st</sup> 2021 - Lisbon

## 4. Region G INT Chart Scheme

### 4.1 Evolution of the regional INT catalogue

**Chart Scale : General & Coastal**



**IHO**

International  
Hydrographic  
Organization

16<sup>th</sup> EAHC - September 29<sup>th</sup> to October 1<sup>st</sup> 2021 - Lisbon

## 4. Region G INT Chart Scheme

### 4.2 Proposal to update the INT scheme

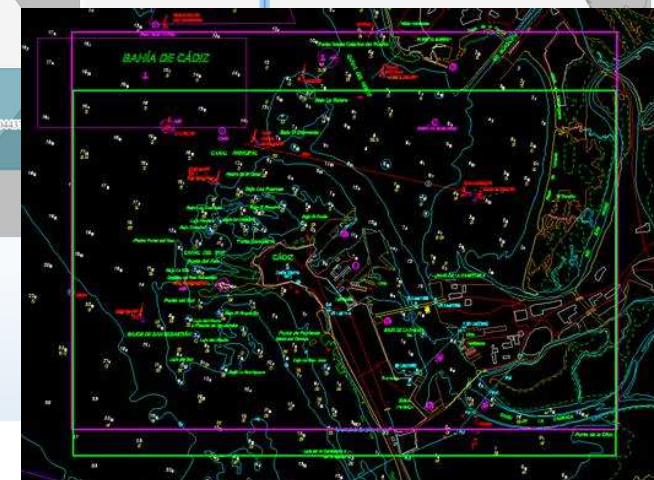
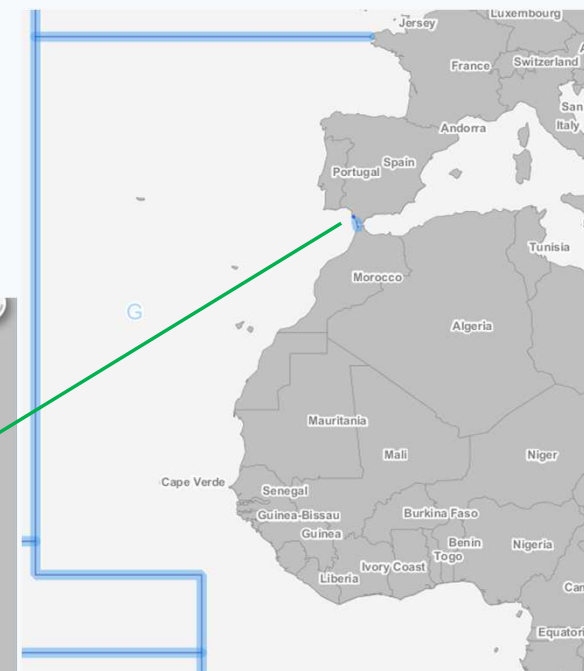
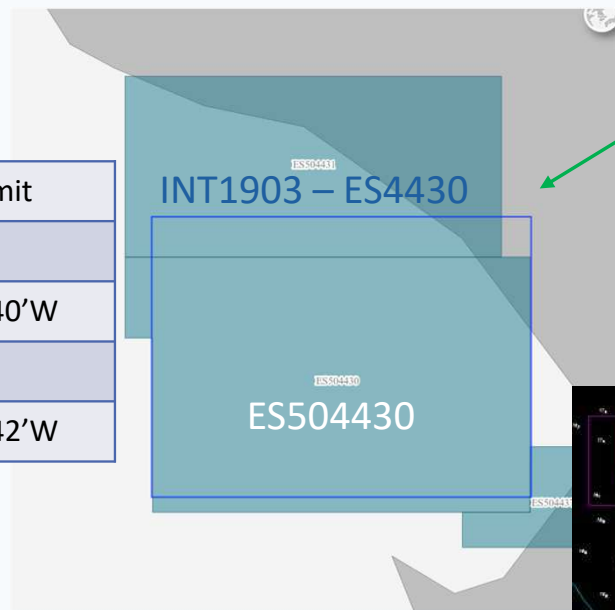
**Update of the coverage of INT1903 (ES4430) “Puerto de Cadiz”  
to match with the coverage of ENC ES504430**

South limit	North limit	West limit	East limit
<b>Current limits in the INT Scheme</b>			
36°29.70'N	36°35.10'N	006°21.50'W	006°12.40'W
<b>Proposed limits</b>			
36°29.40'N	36°34.32'N	006°21.48'W	006°12.42'W

Scale : 1:12 500

First Edition : 2001 – New edition : 2020

**Decision to take : ICCWG Members to approve this update**



Old coverage / New coverage



**IHO**

International  
Hydrographic  
Organization

16<sup>th</sup> EAHC - September 29<sup>th</sup> to October 1<sup>st</sup> 2021 - Lisbon

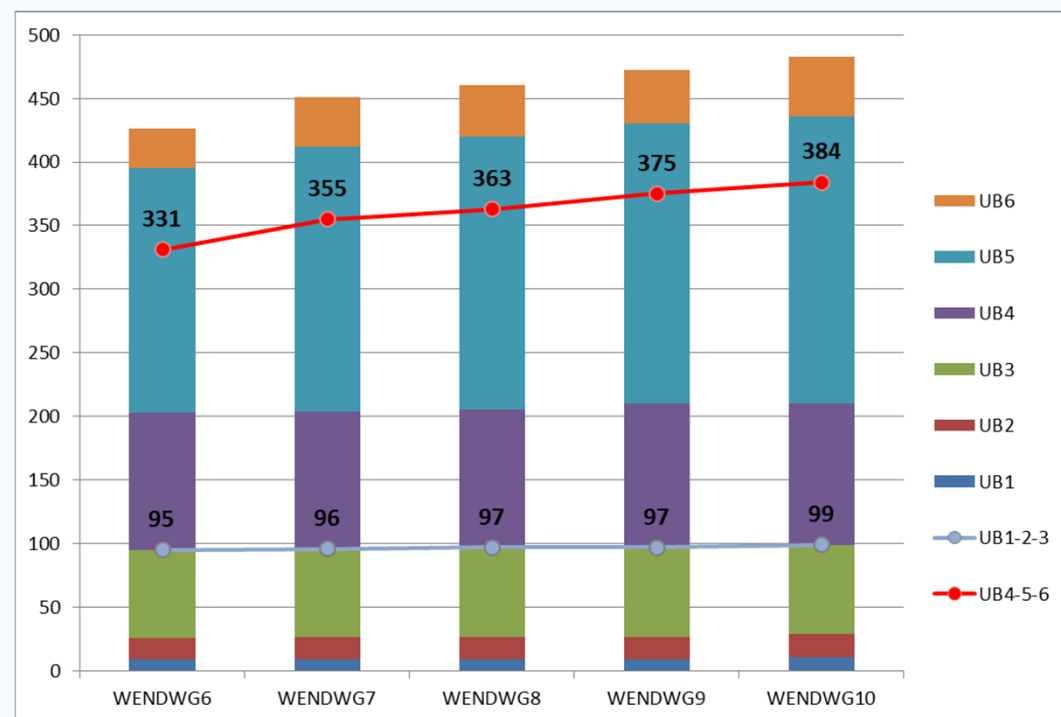
## 5. Region G ENC Chart Scheme

### 5.1 Status of the ENCs

Region G	WEND-6	WEND-7	WEND-8	WEND-9	WEND-10
UB1	9	9	9	9	11
UB2	17	18	18	18	18
UB3	69	69	70	70	70
UB4	108	108	108	113	111
UB5	192	208	215	220	226
UB6	31	39	40	42	47
Total	426	451	460	472	483

The number of ENCs available in the region continues to increase but the increase is slowing down:

- certain maturity of the scheme
- difficulty to produce the remaining ENCs



Number of UB1-2-3-4 ~ stable in the last 3 years

UB4 ↗ 3% in the last 3 years (previously 5%)

UB5 ↗ 9% in the last 3 years (previously 15%)

UB6 ↗ 21% in the last 3 years (previously 35%)



IHO

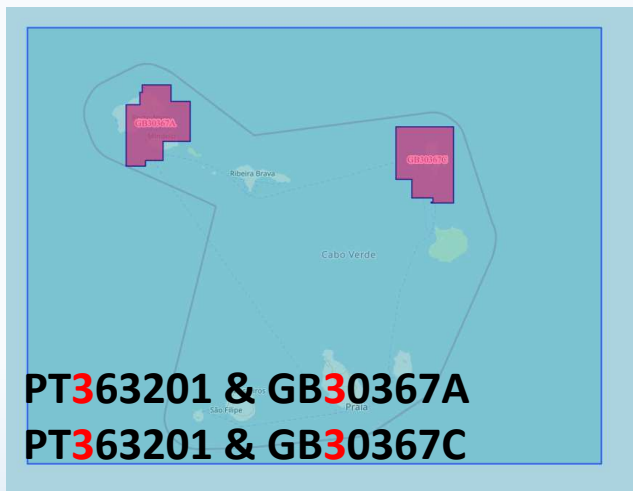
International  
Hydrographic  
Organization

16<sup>th</sup> EAtHC, Interim meeting, VTC September 28-29<sup>th</sup> 2020

## 5. Region G ENC Chart Scheme

### 5.2 ENC overlaps

IC-ENC REGIONAL HYDROGRAPHIC COMMISSION OVERLAP REPORT - EAST ATLANTIC RHC - SEPTEMBER 2020																				
ID	STATUS	RENC Membership	RHC	ENC 1	ENC 2	Usage Band	ENC 1 Scale	ENC 2 Scale	ENC 1 EN (ER)	ENC 2 EN (ER)	Overlap extent (Km x Km) (m/square NM)	Content difference	Geog. Location	Shipping density	Size	Scale	Route patterns	ECDIS	Overall Severity of Risk	Justification
558	LIVE	IC-ENC - NON RENC	EAtHC	PT363201	GB30367A	3	349999	90000	1 (1)	4 (0)	52Km x 65Km	UNABLE	HIGH	LOW	LOW	MEDIUM	HIGH	UNABLE	LOW (U)	Overlap covers island and surrounding coastal waters. Compilation scales are very different (intermediate usage band). Lots of inter-island traffic. Unable to determine content difference.
559	LIVE	IC-ENC - NON RENC	EAtHC	PT363201	GB30367C	3	349999	180000	1 (1)	4 (0)	47Km x 61Km	UNABLE	HIGH	LOW	LOW	MEDIUM	HIGH	UNABLE	LOW (U)	Overlap covers island and surrounding coastal waters. Compilation scales are very different (intermediate usage band). Lots of inter-island traffic. Unable to determine content difference.



New coverage for PT ENC  
Change of usage



No more overlaps

NEW (March/April 2021)



IHO

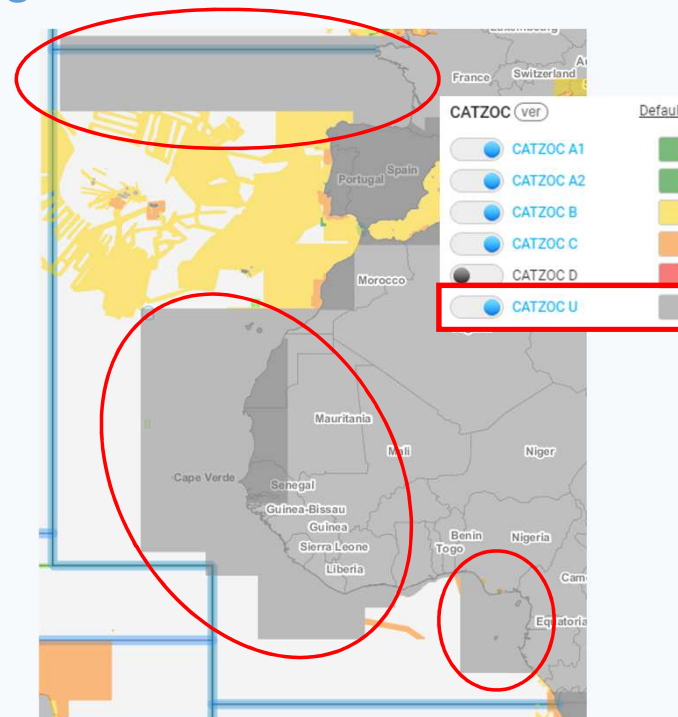
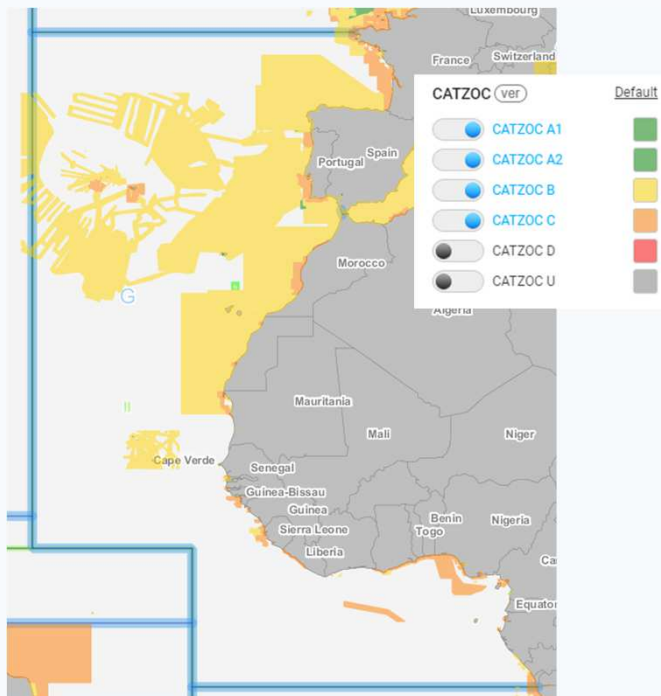
International  
Hydrographic  
Organization

16<sup>th</sup> EAtHC, Interim meeting, VTC September 28-29<sup>th</sup> 2020



## 5. Region G ENC Chart Scheme

### 5.3 Implementation of CATZOC in ENC Charts



Proposed Action EAtHC 16-xx : MS are encouraged to populate the CATZOC values (1 to 5) of their ENC cells



IHO

International  
Hydrographic  
Organization

16<sup>th</sup> EAtHC, Interim meeting, VTC September 28-29<sup>th</sup> 2020

## 5. Region G ENC Chart Scheme

### 5.4 Implementation of an ENC Scheme for the region – Way forward ?

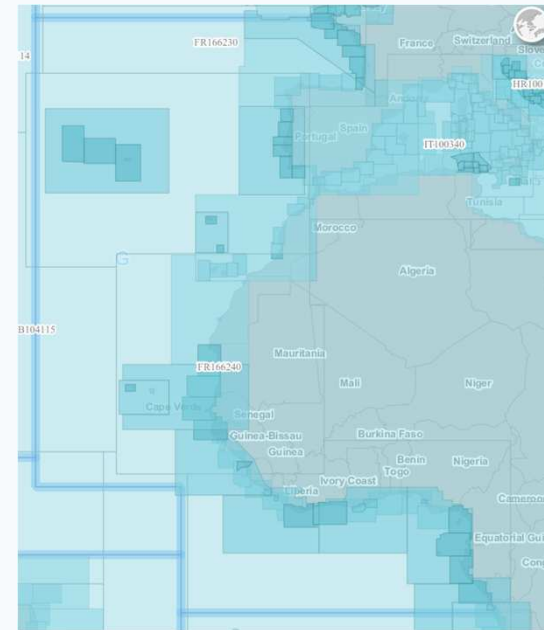
Part A: Section 200 of S-11 provides guidance for the preparation and maintenance of ENC schemes, similar to what is done for INT charts schemes.

INToGIS Phase II extends the visualization / management of INT charts scheme to ENCs.

Action EAtHC 15-19 :

Regional G ICCWG to validate ENC schemes for UB1/2/3 and report back to the IHO SECRETARIAT

➔ RCC to study with IHO Secretariat the possibility to copy the ENC catalog in the ENC scheme



ENCs - Catalogue			ver	Default
<input checked="" type="checkbox"/>	Overview		50%	T
<input checked="" type="checkbox"/>	General		50%	T
<input checked="" type="checkbox"/>	Coastal		50%	T
<input type="checkbox"/>	Approach		50%	T
<input type="checkbox"/>	Harbour		50%	T
<input type="checkbox"/>	Berthing		50%	T



IHO

International  
Hydrographic  
Organization

## 6. INToGIS – useful layers

### 6.1 Port Index

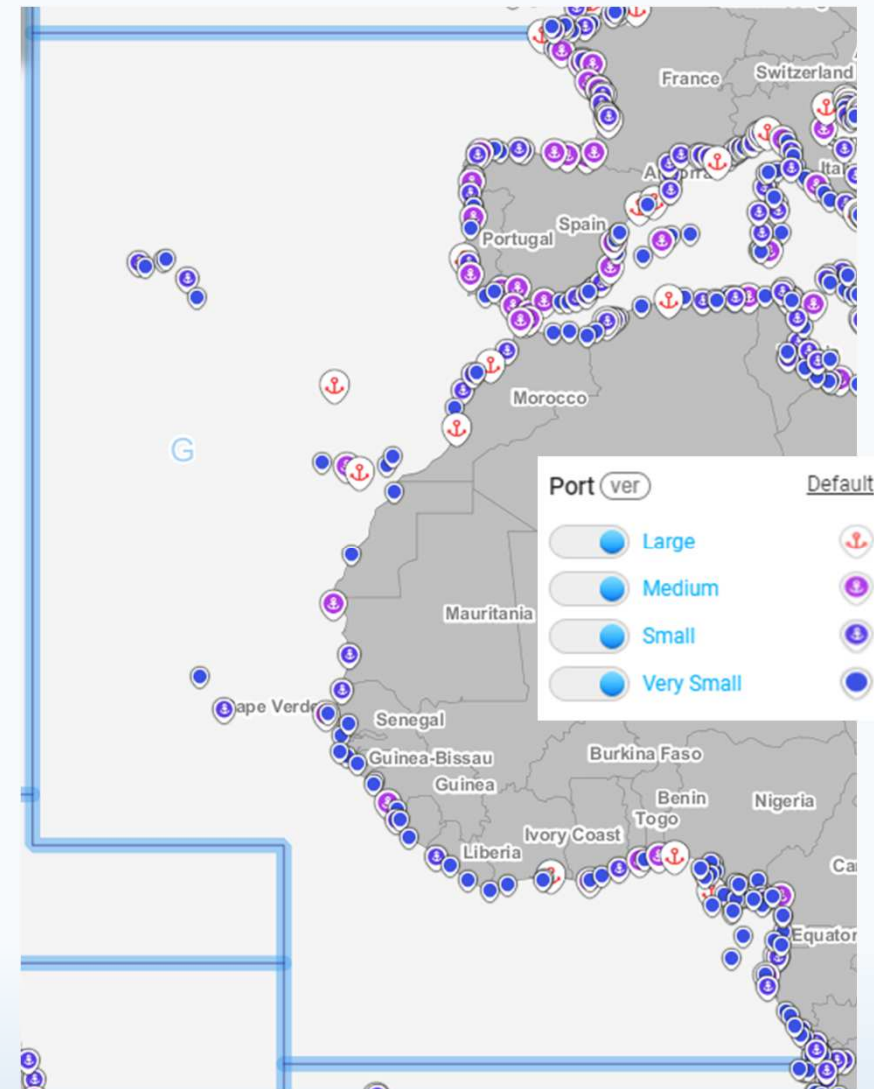
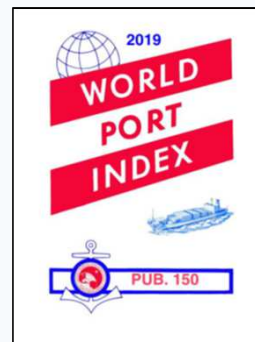
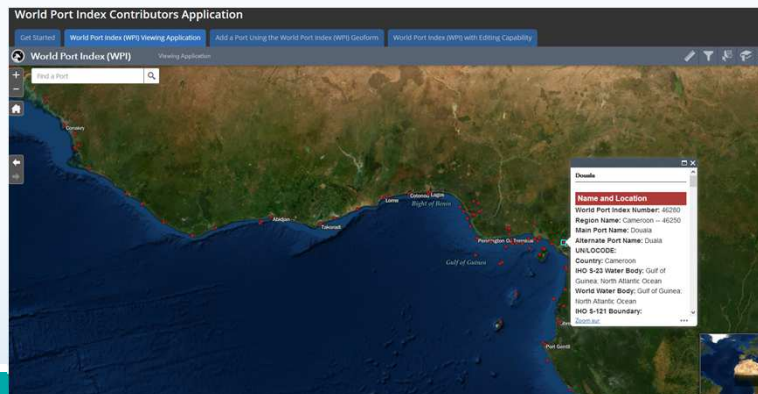
Available on INToGIS without logging

Source : World Port Index (Pub. 150 – NGA)

<https://msi.nga.mil/Publications/WPI>

Access to the direct link to update port information or to add a port :

<https://nga.maps.arcgis.com/apps/MapSeries/index.html?appid=f9515d53e3e24ae7919f02eb8f554c96>



IHO

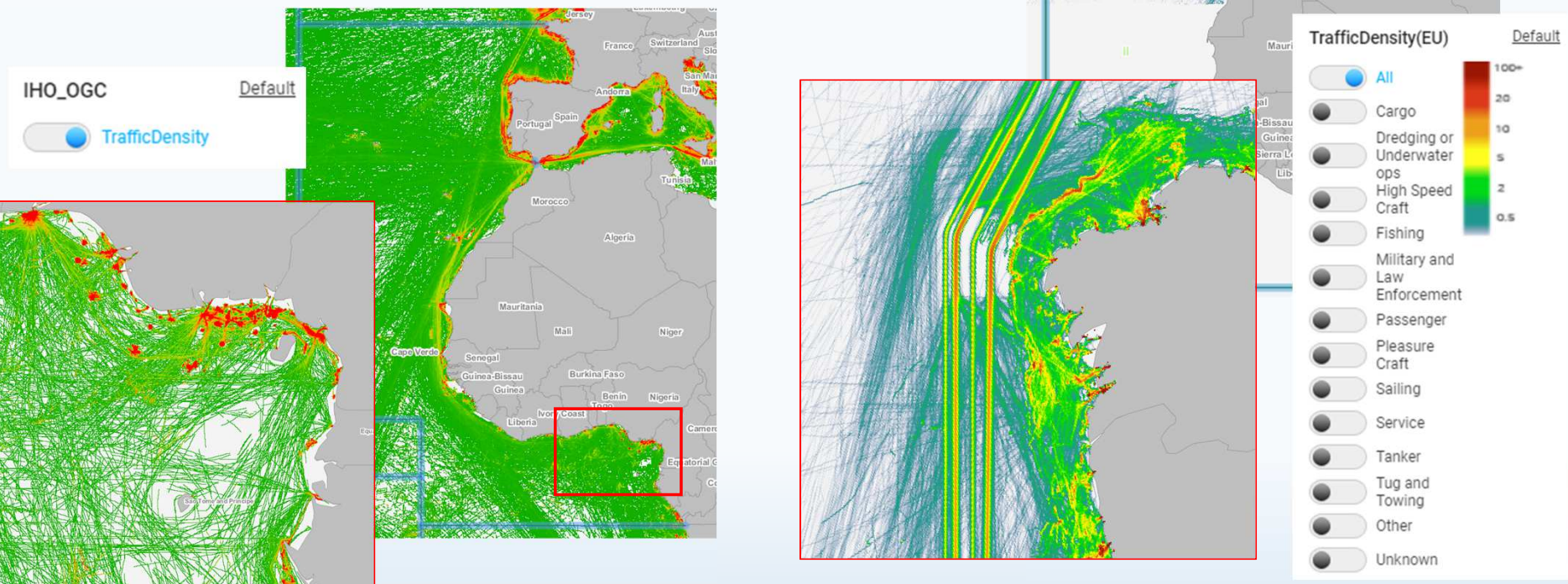
International  
Hydrographic  
Organization



## 6. INToGIS – useful layers

### 6.2 Traffic Density

2 layers available on INToGIS for EAtHC Region :  
OGC (without logging) + EU (only by logging)



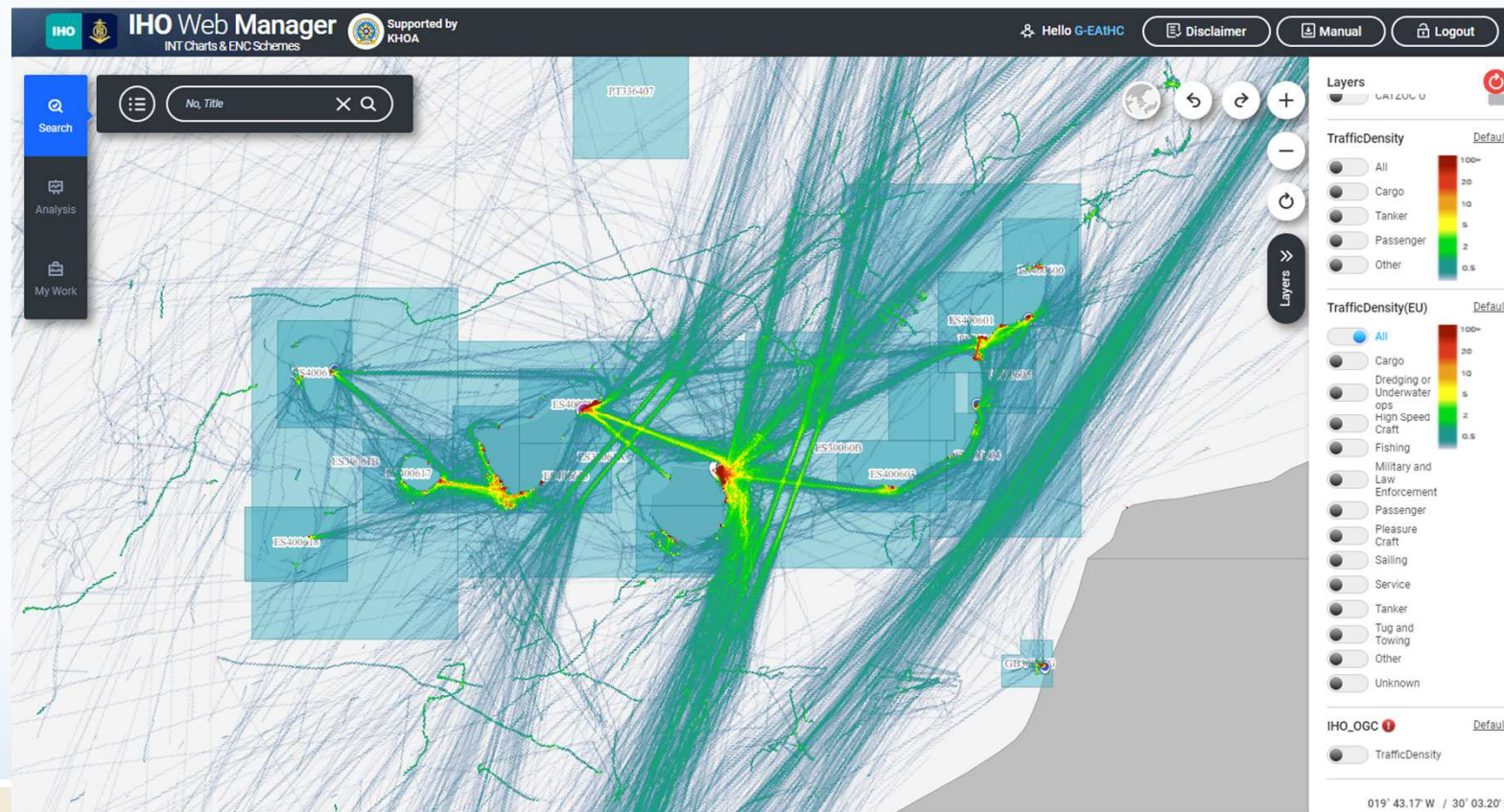
IHO

International  
Hydrographic  
Organization

16<sup>th</sup> EAtHC, Interim meeting, VTC September 28-29<sup>th</sup> 2020

## 6. INToGIS – useful layers

Combination of these layers on INToGIS > good way to verify the adequacy of a INT chart or ENC scheme (e.g. coverage of ports and their approaches, frequented areas, routes)



IHO

International  
Hydrographic  
Organization

16<sup>th</sup> EAHC, Interim meeting, VTC September 28-29<sup>th</sup> 2020



## 7. Consolidation of the EAtHC ICC-WG

### 7.1 ICC-WG membership

- Please confirm your participation in the group and POC

### 7.2 ICC-WG ToRs & RoPs

- Proposal of ToRs & RoPs (version of 15 May 2021 based on S-11 annex 1) available for approval in IHO EAtHC website : <https://iho.int/en/eathc-region-g-iccw-g-letters>

- Membership – “Standard rule”

*Membership is open to all members and associate members of the Commission wishing to be represented. [...] Noting the technical nature of the Group's work, participation should be limited to representatives of Hydrographic Offices concerned with nautical charting.*

Limits participation in the group to a few States in the region : ES, FR, GH, MA, NG, PT, UK (Obs.)



IHO

International  
Hydrographic  
Organization

## 7. Consolidation of the EAtHC ICC-WG

## 7.3 Procedures

- Form to harmonize submission and improve traceability

[illegible][illegible]

**Illustrations of proposals (optional) / Illustrations des propositions (facultatif)**

- 1/ Producer fills the form and submits it to RCC
- 2/ RCC examines the submission, proposes INT numbers, validate the proposals and return the form completed
- 3/ Producers apply the changes on INTToGIS and transmit them to RCC
- 4/ RCC prepares CL to present the proposals to ICCWG

## 8. Evolution of the ICC-WG scope regarding to IHO Strategic Plan

- New IHO Strategic Plan focuses on 3 main cross-sectional objectives :
  - New services for the mariners (S-1xx products)
  - Increase consistency, quality and distribution efficiency of hydrographic data
  - Improve seabed knowledge
- Current scope of ICC-WG : management of INT chart and ENC (S-57) schemes (coverage regarding to navigational needs, ENC overlaps, CATZOC attributions...)



IHO

International  
Hydrographic  
Organization



## 8. Evolution of the ICC-WG scope regarding to IHO Strategic Plan

- **Roadmap for the S-100 Implementation strategy (Version 1.0 Rev1) :**  
[https://iho.int/uploads/user/About%20IHO/Council/S-100\\_ImplementationStrategy/S100\\_Roadmap\\_Decade\\_v1Rev1\\_EN\\_16Nov2020.pdf](https://iho.int/uploads/user/About%20IHO/Council/S-100_ImplementationStrategy/S100_Roadmap_Decade_v1Rev1_EN_16Nov2020.pdf)
  - Current proposal from HSSC to C-5 IHO Council (C5-04,1A Rev1):
    - Development of Edition 2.0.0 of S-101 Product Specification by the end of 2024
    - 2026 > Start of the S-101 operational data production  
([https://iho.int/uploads/user/About%20IHO/Council/council5/C5\\_2021\\_04.1A\\_EN\\_HSSC\\_Report\\_to\\_C5\\_v1\\_Rev1.pdf](https://iho.int/uploads/user/About%20IHO/Council/council5/C5_2021_04.1A_EN_HSSC_Report_to_C5_v1_Rev1.pdf))
- To extend ICCWG scope to S-101 ENC's, the first step is to implement the S-57 ENC scheme via INTToGIS by 2023 and to maintain it with **planned** and produced ENC's



IHO

International  
Hydrographic  
Organization

## 8. Evolution of the ICC-WG scope regarding to IHO Strategic Plan

### ■ Principles of the WEND for S-1xx products (**Adopted** - IHO CL 37/2021) :

<https://iho.int/en/wendwg-repository>

#### ■ 5. Coordination of S-1XX products and dissemination services

*5.5. Member States will address coverage of S-1XX products on a regional basis through Regional Hydrographic Commissions (RHCs), and the WENDWG will monitor the overall coverage on a global basis, reporting to IRCC .*

*5.6. The applicable RHC may facilitate arrangements for production and dissemination of S-1XX products. RHCs should engage with data owners, product and service providers, and other stakeholders as appropriate to ensure that a coordinated and cohesive regional approach is considered . Also, the existing RENC structure may facilitate co-operation between individual Member States and support RHC's to achieve appropriate S-1XX product coverage.*

➤ WEND principles are set as a priority for ENC S-101

➤ The adoption in the IMO texts of the carriage of S-101 ENCs for ECDIS will be effective at the earliest in 2025. There is no need of S-101 ENC for SOLAS navigation before then.



IHO

International  
Hydrographic  
Organization

## 8. Evolution of the ICC-WG scope regarding to IHO Strategic Plan

### ■ Proposed priorities :

- 1/ To implement the S-57 ENC scheme via INTToGIS and to maintain it with planned and produced ENCs (*deadline for implementation : December 2022*)
- 2/ To follow the relevant (ongoing) work of the WENDWG on the implementation of the S-101 ENC scheme and on the application of some or all of the S-101 principles to other S-1xx products
- 3/ To develop S-100 training in the framework of EAthC Capacity Building and to benefit from S-100 training opportunities with IHO (other RHCs webinars..) and RENCs



IHO

International  
Hydrographic  
Organization

16<sup>th</sup> EAthC, Interim meeting, VTC September 28-29<sup>th</sup> 2020

## 9. Permanent EAtHC actions related to ICC-WG

Action	Description	Responsible
EAtHC 15-13	INT & ENC Chart producers to check the consistency of the existing set of ENC with NOAA's list of cruise ship port coverage gaps and NGA's list of ports (Pub 150). To provide the regional charting coordinator with a set of proposals to complete large scales ENC schemes	INT & ENC Chart producers
EAtHC 15-14	INT chart producers to provide first editions and details of the new editions of INT charts to the INT Chart Coordinator (or ICCWG) at least three months prior to every EAtHC or ICCWG meeting in accordance with S-11 (3.14.1 – c)	INT chart producers
EAtHC 15-15	These newly adopted INT charts, with the agreement of the INT Chart Producer Nation to be subsequently transferred to the IHO SECRETARIAT for its chartroom reference collection and internal use (database validation, consultation, etc.)	RCC
EAtHC 15-16	Chart producers to provide the regional charting coordinator with an update of the list of on-line chart catalogues, either directly or systematically when updating the Yearbook	INT chart producers
EAtHC 15-17	Chart producers to update INT chart details (limits, scale, format) using INTOGIS 'web manager' interface	INT chart producers



**IHO**

International  
Hydrographic  
Organization

16<sup>th</sup> EAtHC, Interim meeting, VTC September 28-29<sup>th</sup> 2020

## 9. Permanent EAtHC actions related to ICC-WG

Action	Description	Responsible
EAtHC 15-18	Regional Charting Coordinator to submit the new INT proposals/ major updates to the approval of the region G ICCWG	RCC
EAtHC 15-19	Regional G ICCWG to validate ENC schemes for UB1/2/3 and report back to the IHO SECRETARIAT	RCC
EAtHC 15-20	Specify how to manage ENC schemes (proposals for new cells, scheduled cells) with INTOGIS II	IHO Secretariat
EAtHC 15-21	ENC producers to enter their ENC projects via the "manager" interface of the INTOGIS II portal (when operational)	ENC producers
EAtHC 15-22	ENC producers to send their ENC projects (production plan in shape format) to the charting coordinator	ENC producers
EAtHC 16-xx	ENC producers to populate the CATZOC values (1 to 5) of their ENC cells	ENC producers



**IHO**

International  
Hydrographic  
Organization

16<sup>th</sup> EAtHC, Interim meeting, VTC September 28-29<sup>th</sup> 2020

---

Thank you

Any question ?



**IHO**

International  
Hydrographic  
Organization

16<sup>th</sup> EAthC, Interim meeting, VTC September 28-29<sup>th</sup> 2020