

EMODnet Bathymetry

Thierry Schmitt (SHOM)
On behalf of the EMODnet Bathy consortium

<https://emodnet-bathymetry.eu/>

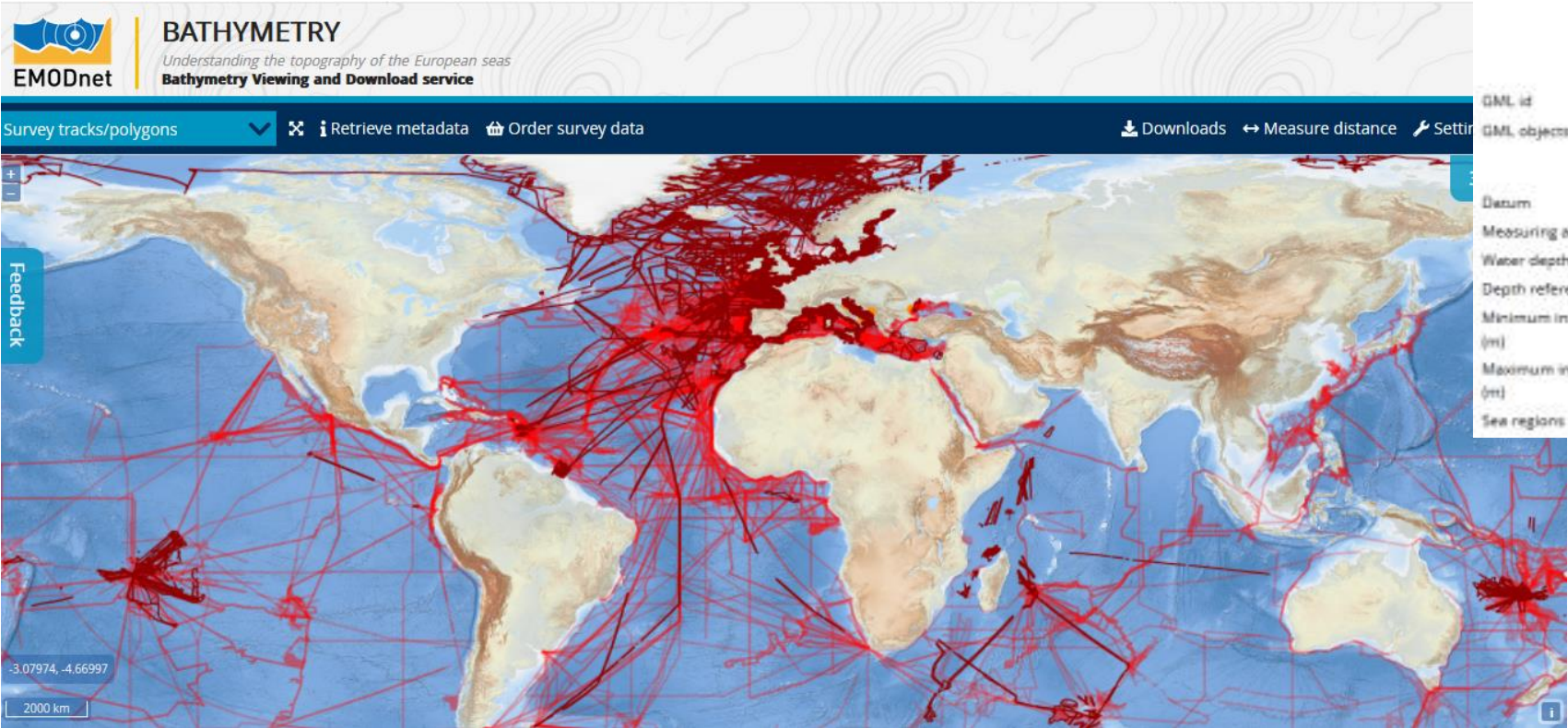
Bathymetric metadata

- Each polygon/poly-line shows the bathymetric coverage/location
- Associated Metadata (INSPIRE compatible, ISO 19115- based upon an unified and agreed thesaurus – BODC held)
- Source data held by the data provider, who decide how to provide its dataset to the final user

WHAT?	
Data set name	vaklodng NH-SK
Discipline	Marine geology Terrestrial
Parameter groups	Gravity, magnetics and bathymetry Terrestrial
Discovery parameters	Bathymetry and Elevation
GEMET-INSPIRE themes	Oceanographic geographical features
Abstract	Bathymetric data extract from bathymetric database
Data format	XYZ ASCII Version 1.0
Data size	0.1
Data set creation date	20140013
WHERE?	
Map	

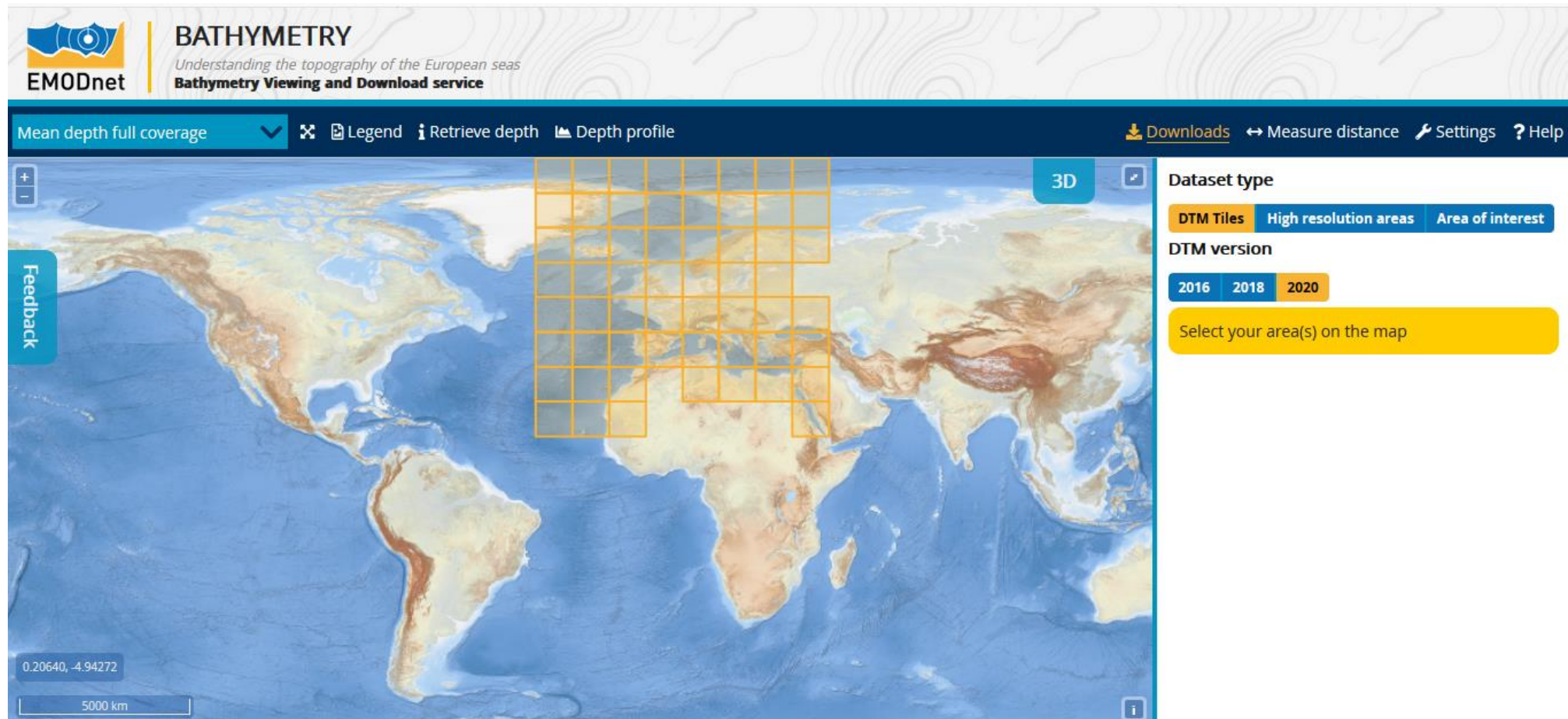


msD1	
Name	Description
RA16522_6132	coverage
Datum	World Geodetic System 84
Measuring area type	surface
Water depth (m)	-9999
Depth reference	Normaal Amsterdams Peil
Minimum instrument depth (m)	-9999
Maximum instrument depth (m)	-9999
Sea regions	North Sea



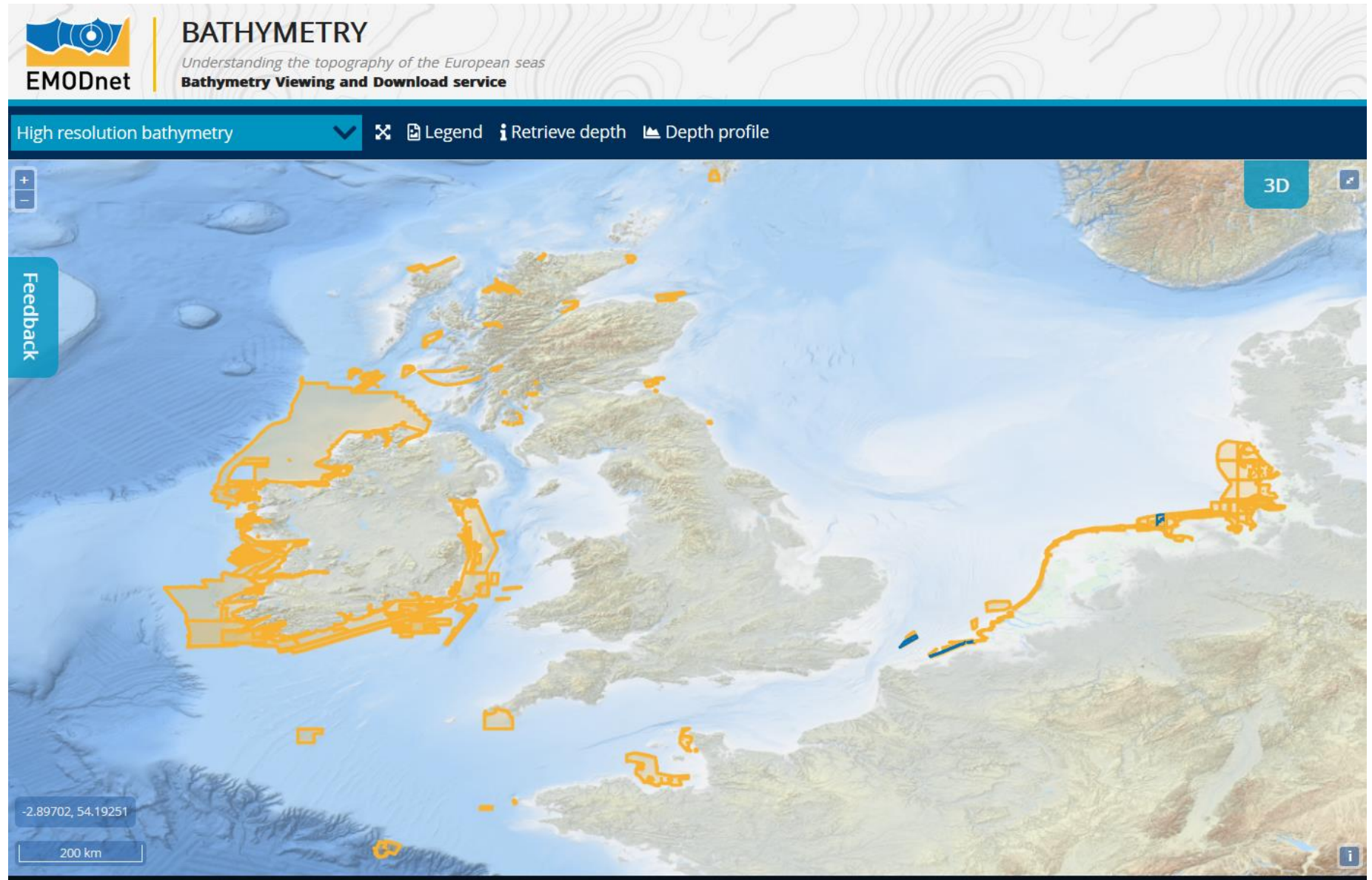
EMODnet Bathymetry DTM

- 1/16 arc-minute (approx. 100m)
- Built from data from partners (HO, Oceanographic centers, private partners)
- DOI, free of charge, free to use
- Available at MSL and LAT



HR DTM

- > 200 High resolution DTM (resolution up to the m)



HR DTM



- > 200 High resolution DTM (resolution up to the m)

Use of the Quality layer



International collaboration: IHO, GEBCO and EMODnet

