

Commission hydrographique de l'Atlantique oriental / Eastern Atlantic Hydrographic Commission

International charting coordination working group (ICC-WG) report to the EAtHC

Présenté par la France (coordinateur cartographique pour la Région G)
Presented by France (as Region G charting coordinator)



IHO

International
Hydrographic
Organization

16th EAtHC, Interim meeting, VTC September 28-29th 2020

1. Region G INT chart scheme - Progress

Since previous conference (EAtHC15) (see EAtHC ICCWG CL 01/2020)

- 1 chart updated (new limits) : INT1960 (PT201)
- 12 new charts added to the scheme :

INT1980 (FR7706-MA2001) INT2884 (FR7835) INT2903 (FR7836) INT2904 (FR7837)
INT2907 (FR7838) INT2909 (FR7831) INT2916 (FR7832) INT2918 (FR7841)
INT2915 (FR7839) INT2917 (FR7840) INT2919 (FR7842) INT2920 (FR7581)

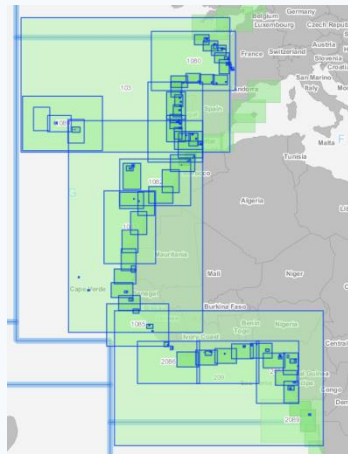
- 3 charts will be removed from the scheme :

INT2881 (FR7587) INT2908 (FR7580) INT2921 (FR6183):

- 6 projects under review by producers and ICC-WG :

INT2800 (PT212) INT1956 (FR7891) INT1883 (PT26408)
INT2883 (FR7834) INT2877 (GB3112) INT2882 (GB1391)

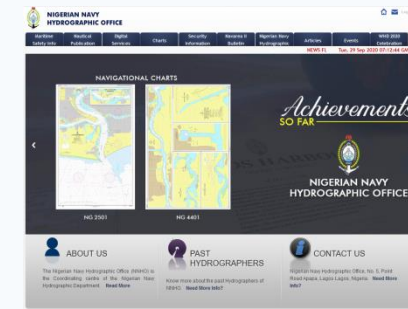
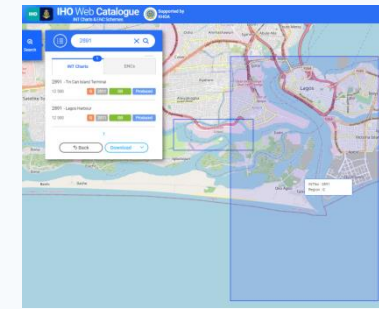
Comments / approvals from EAtHC members are expected by **October 16th 2020**.



IHO

International
Hydrographic
Organization

1. Region G INT chart scheme - Progress



New INT chart producer !

- The strengthening of the NNHO's capacities now enables Nigeria to gradually take over responsibility for chart production on its waters.
- ICC-WG welcomes the emergence of a new producer of INT charts in the region.

To ensure a safe and efficient transition between GB and NG :

- o Nigeria being a new INT chart producer, the new version of the INT2891 chart (Lagos Harbour & Tin Can Island Terminal) should be submitted for review by the Region G ICC-WG (in conformity with S-11 article 3.14.1 a.);
- o Printing nations should be informed of this switchover. Appropriate arrangements should be made with Nigeria to allow the continuation of such printing;
- o As the production of equivalent ENC cells remains assured in the short term by other States (in particular GB), a transition plan should be elaborated to ensure a good simultaneous update of the INT chart and the equivalent ENCs.



IHO

International
Hydrographic
Organization

2. Region G INT chart scheme – Future of the INT scheme ?

EAtHC members are encouraged to take note of the NCWG final report on the Future of the Paper Nautical Chart (August 28th 2020)

<https://iho.int/uploads/user/Services%20and%20Standards/HSSC/HSSC12/2020-08-28%20Future%20of%20the%20Paper%20Nautical%20Chart%20Final%20Report%20FINAL.pdf>

Coastal states and their PCAs are encouraged to work together to consider the possible adaptation of the INT scheme :

Frozen scheme ?

Reduced scheme ?



IHO

International
Hydrographic
Organization

3. Region G ENC scheme

The number of ENC available in the region continues to increase but the increase is slowing down

Region G affected by very few overlaps

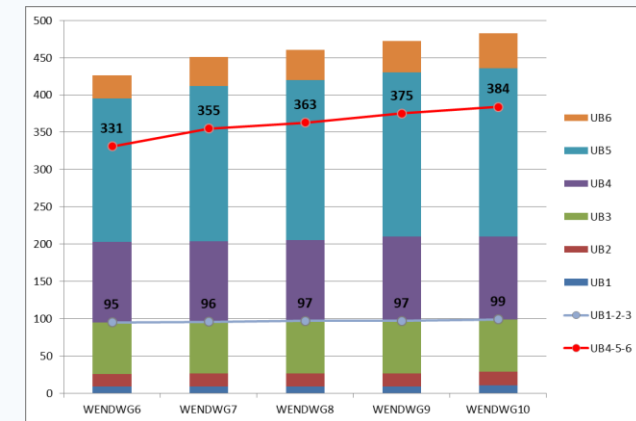
Current overlaps (PT363201 & GB30367A / PT363201 & GB30367C) should be resolved in 2021 when PT will take over the production of the equivalent cells.

***Proposed New action* : ENC producers to implement ENC scheme for UB1 (and/or UB2 – UB3) using new “ENC scheme” functionalities offered by INTToGIS**

Implementation very similar to INT charts

Test on small & medium scale ENCs to appropriate the tool, to improve coordination between producers (by better anticipating the evolutions of the ENC scheme)

➔ All ENC producers / Deadline : before next EAtHC ICC-WG meeting (April 2021)



IHO

International
Hydrographic
Organization

4. Consolidation and adaptation of the ICC-WG

ICC-WG ToRs & RoPs : which perimeter for the membership?

S-11 annex 1 “standard rule” : *Membership is open to all members and associate members of the Commission wishing to be represented. [...]*

Noting the technical nature of the Group’s work, participation should be limited to representatives of Hydrographic Offices concerned with nautical charting.

“Standard rule” → Limits participation to a few States : FR, MA, NG, PT, SP, ~~UK~~ (Obs.)

Need at least to open to Observers, PCA in particular (UK participation essential due to its cartographic commitments in the region).

Few HOs in the region → ICC-WG membership open to all entities directly concerned with nautical charting (for example the Maritime Authority of Ghana expressed the will to participate to the ICC-WG).

Proposed rule concerning membership

Membership is open to all members, associate members and observers of the Commission wishing to be represented. [...]

Noting the technical nature of the Group’s work, participation should be limited to official representatives of Member States and non Member States, directly concerned with nautical charting in the Region G.



IHO

International
Hydrographic
Organization

5. Preparation for the future

ICC-WG mandate to be expanded to cover S-1XX based products

The mandate of ICC-WG should be extended to future S-100 based products on the basis of the new WEND-100 principles (the level of coordination by the RHCs could in particular be different for the different hydrographic and nautical S-1XX products considered).

EAtHC members are invited to consider a possible evolution of INToGIS (phase III) to take into account the new S-100 based products.



IHO

International
Hydrographic
Organization