



1<sup>st</sup> VTC conference of EAtHC  
*1<sup>ère</sup> vidéoconférence de la CHAtO*

## **International charting coordination working group (ICC-WG)**

Presented by France (Region G charting coordinator)  
*Présenté par la France (coordinateur cartographique pour la Région G)*

### **Agenda Item 03.1A**

23<sup>rd</sup> of November 2023 – 23 novembre 2023



- 1- Opening**
- 2- Region G INT Chart Scheme**
- 3- Region G ENC Scheme**
- 4- World Port Index**
- 5- Permanent EAtHC actions related to ICCWG**
- 6- Evolution of the ICCWG scope regarding to IHO Strategic Plan**



IHO

# 1 - OPENING

International  
Hydrographic  
Organization

- Regional Charting Coordinator (RCC) for Region G : **France (Shom)**
  - Coordinator : Capt. Pierre-Yves DUPUY [pierre-yves.dupuy@shom.fr](mailto:pierre-yves.dupuy@shom.fr)
  - Coordinator assistant : Lt. Gabin SOGORB [gabin.sogorb@shom.fr](mailto:gabin.sogorb@shom.fr)
  - Generic email address : [regionGcoord@shom.fr](mailto:regionGcoord@shom.fr)
- Access to Region G ICCWG ToRs & RoPs and Circular Letters (both languages FR & EN) :  
<https://iho.int/en/eathc-region-g-iccwg>
- Current membership :  
France (Chair) – Ghana – Morocco – Nigeria – Portugal – Spain – United Kingdom (Obs.)



IHO

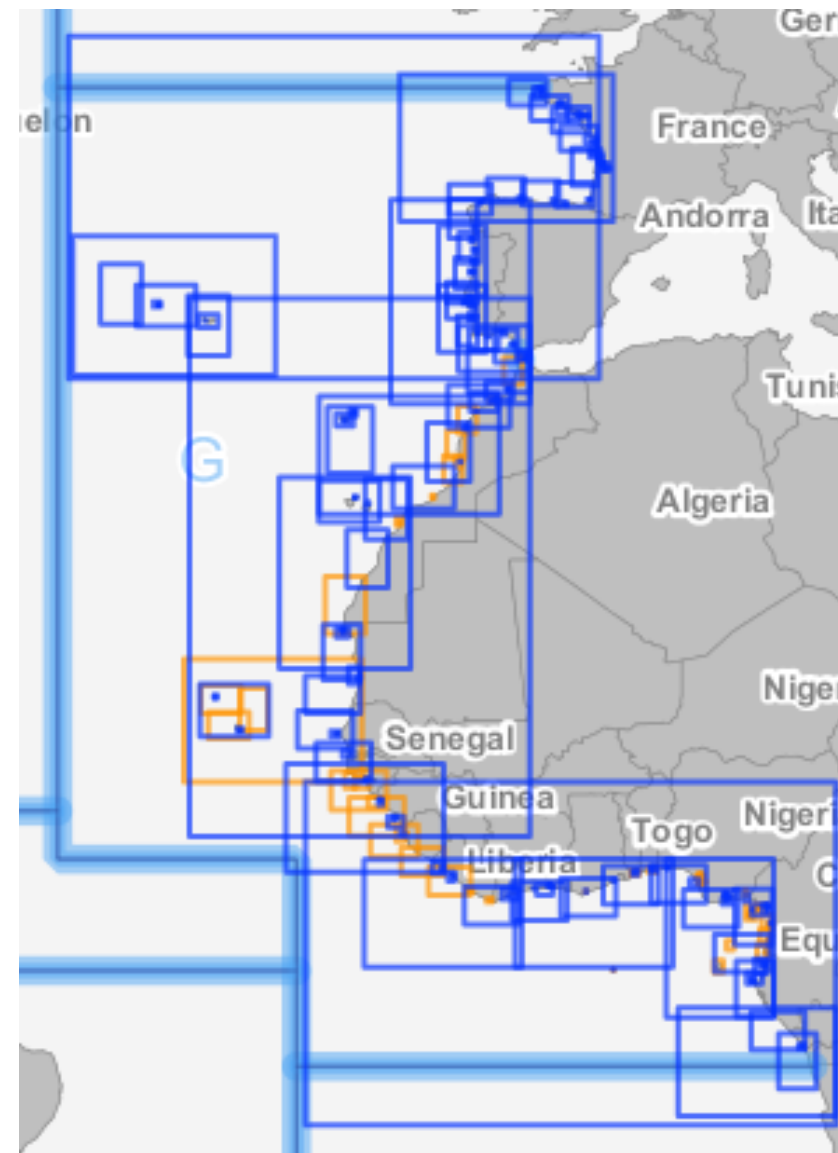
# 2 - REGION G INT CHART SCHEME

International Hydrographic Organization

## • 2.1 Evolution of the regional INT scheme

1 proposal from Spain → INT1850

CHAto / <i>EAtHC</i>	14 <sup>th</sup>	15 <sup>th</sup>	Interim 16 <sup>th</sup>	16 <sup>th</sup>	17 <sup>th</sup>	VTC01
Total Cartes INT <i>Total INT charts</i>	172	173	173	199	199	<b>204</b>
Cartes INT produites <i>Produced INT charts</i>	139	141	142	146	149	<b>158</b>
Cartes INT planifiées <i>Planned INT charts</i>	33	32	31	53	50	<b>46</b>
Ratio	80%	82%	82%	73%	75%	<b>77%</b>





IHO

# 2 - REGION G INT CHART SCHEME

International Hydrographic Organization

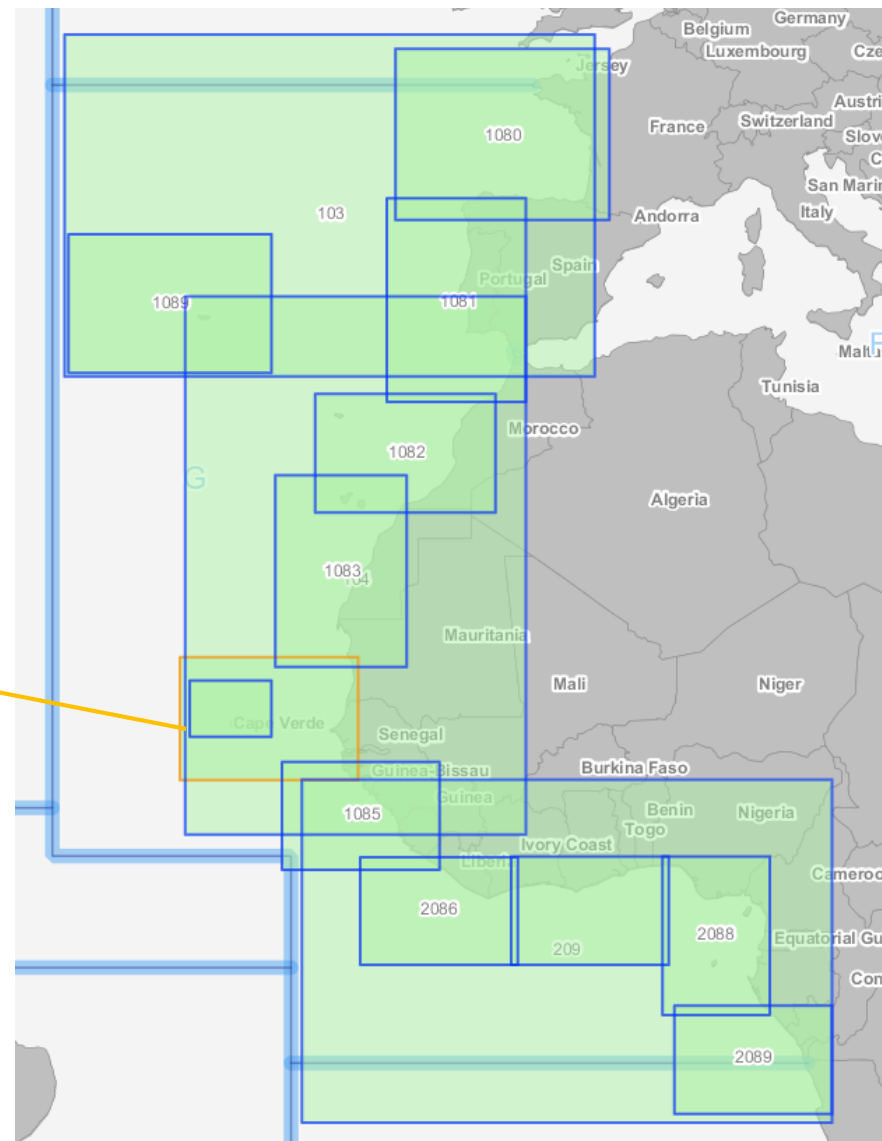
## 2.1 Evolution of the regional INT scheme

### Chart Scale : Overview

Complete coverage of EAthC coastal waters for two chart series :

- 1: 3 500 000 – 1: 2 790 000
- 1: 1 100 000 – 1: 990 000

INT 1084 ENC <i>s</i>	
Nation Title	De Trimiris à Guiné-Bissau e Cabo Verde
Nation Chart No	62101
Inclusion Year	
First Edition Year	
New Edition Year	
Producers	PT
Chart Date Year	
Printer Nation	
Print Chart No	
Print format	
Frame Dimensions	
Scale	1 100 000
INT Area	G
Producing Status	Schemed
Record Update Date	
Region Version	4.0.6 JUL. 2022





IHO

# 2 - REGION G INT CHART SCHEME

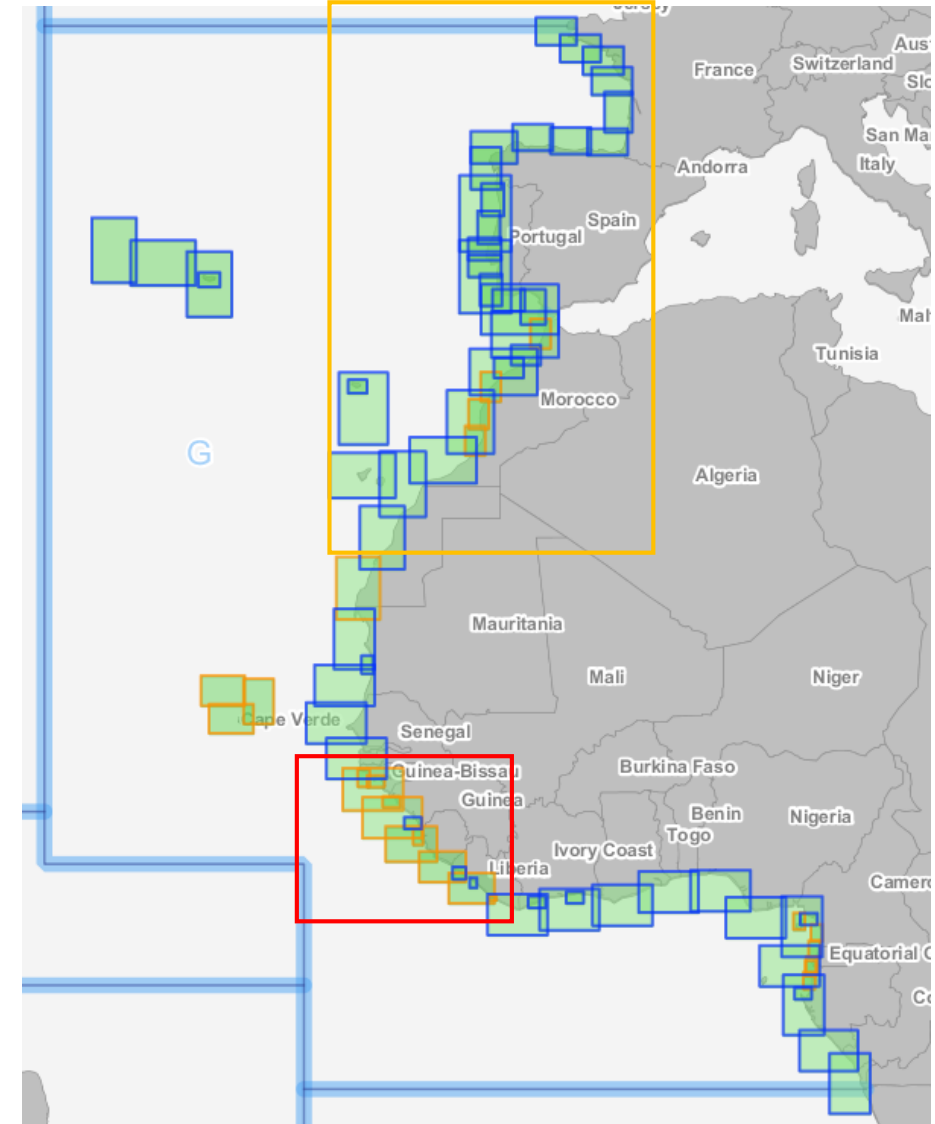
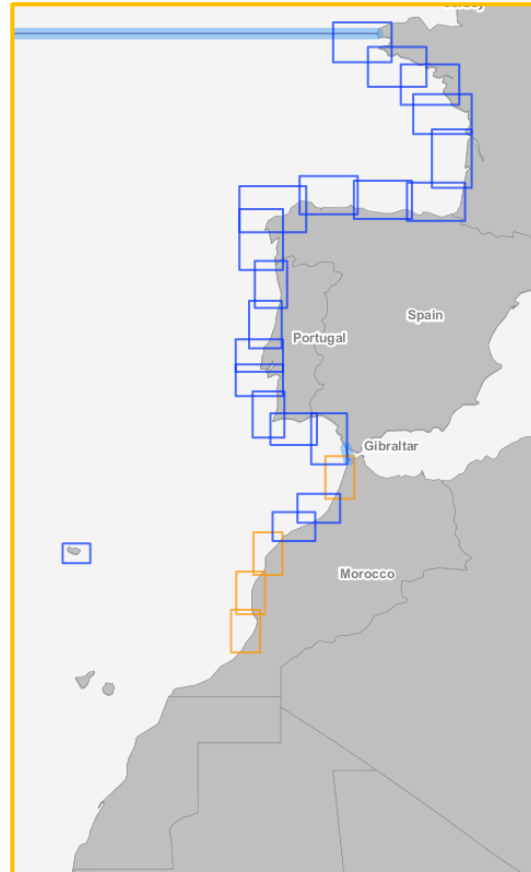
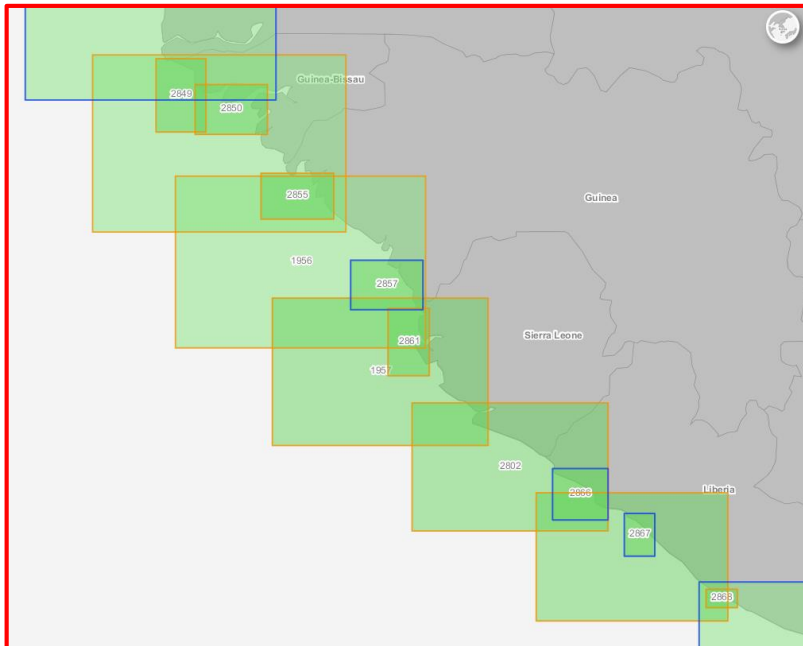
International Hydrographic Organization

## • 2.1 Evolution of the regional INT scheme

**Chart Scale : General & Coastal**

Complete coverage of EAthC coastal waters :

➤ 1: 150 000 – 1: 350 000





IHO

# 2 - REGION G INT CHART SCHEME

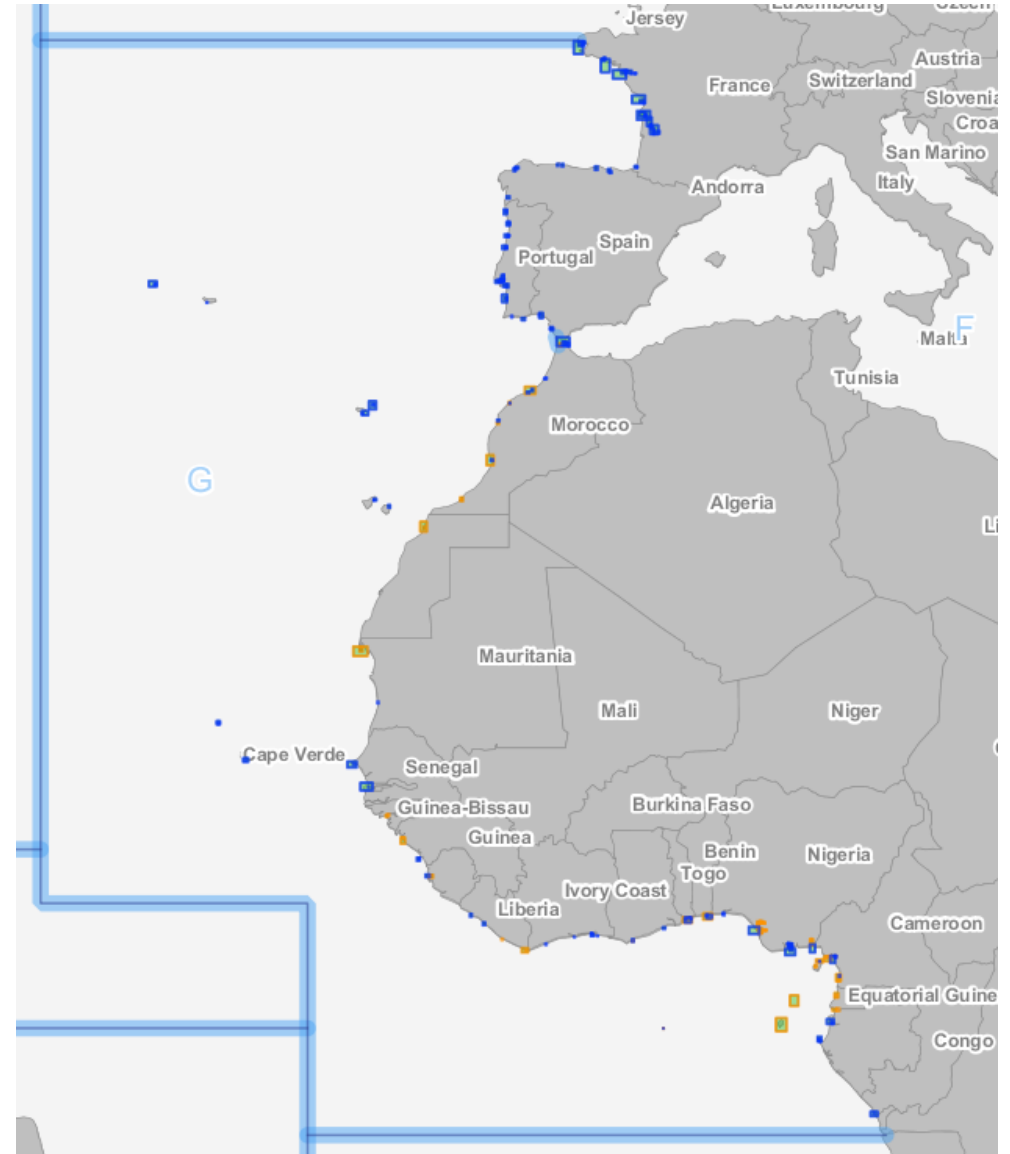
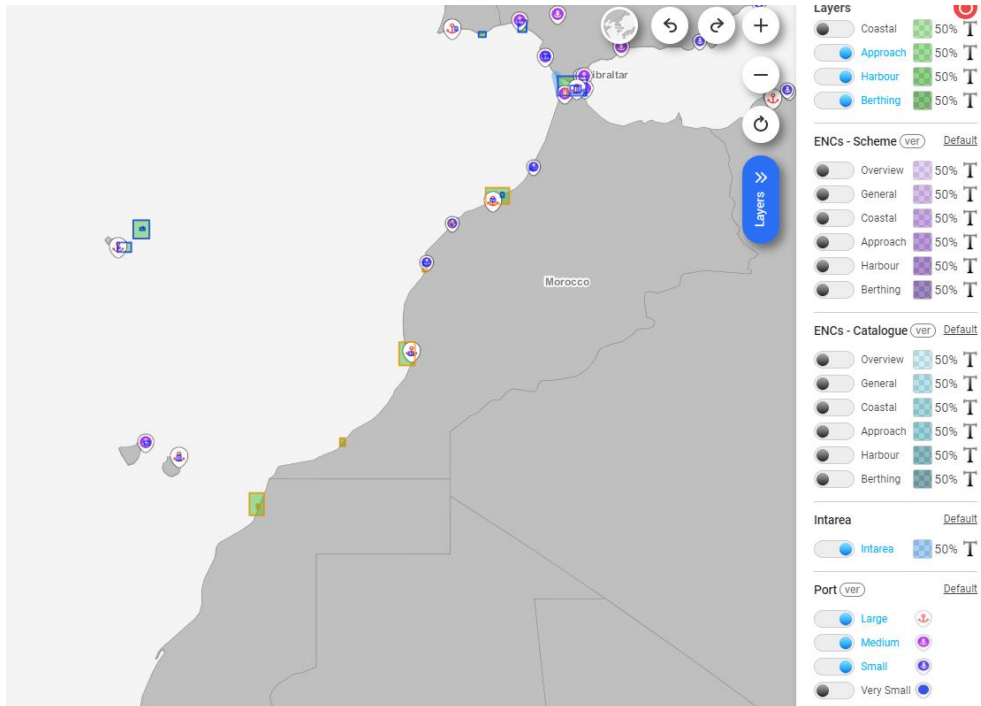
International Hydrographic Organization

## • 2.1 Evolution of the regional INT scheme

**Chart Scale : Approach, Harbour & Berthing**

EAtHC coastal countries to identify if some of their ports with significant traffic need INT coverage if not existing

*(Possible use of INTToGIS by filtering INT charts and displaying the port layers)*





IHO

# 2 - REGION G INT CHART SCHEME

International Hydrographic Organization

## 2.2 Proposal to update the INT scheme

### 1 proposal from Spain → CL03/2023 ICCWG

Reminder : available form to submit to RCC major changes in INT scheme (new charts, deletion or changes in scale or coverage)



<b>EAtHC ICCWG / ICCWG CHAtO</b> PROPOSAL FOR UPDATING INT SCHEME / PROPOSITION DE MISE A JOUR DU SCHEMA INT
-----------------------------------------------------------------------------------------------------------------

**Instructions:**

- Fill in the form and send it by email to EAtHC ICC / Remplir le formulaire et le transmettre par courriel à l'ICC de la CHAtO ([dmi-rex-d@shom.fr](mailto:dmi-rex-d@shom.fr))  
The form can be accompanied by the concerned chart coverage in ESRI Shapefile format / Le formulaire peut être accompagné de l'emprise des cartes concernées au format ESRI Shapefile
- Return from EAtHC ICC including proposal of INT numbers and agreement to fill in the IHO Web Catalogue / Retour de l'ICC CHAtO incluant la proposition des numéros INT et l'accord pour renseigner le Catalogue OHI en ligne
- Fill in the IHO Web Catalogue according to the form / Renseigner le Catalogue OHI en ligne conformément au formulaire (<http://chart.iho.int:8080/iho/main.do>)

**Note:**

Changes to charts already in the INT Scheme concerning title, new edition date or change of status (Schemed > Produced) do not require ICCWG approval and are to be made directly in the IHO Web Catalogue. ICCWG approval required for coverage limit and/or scale changes.  
Les modifications de cartes déjà au schéma INT qui concernent le titre, la date d'édition ou le changement de statuts (Schemed > Produced) ne nécessitent pas d'approbation de l'ICCWG et sont à faire directement dans le catalogue OHI en ligne. Approbation de l'ICCWG requise pour les changements de limites et/ou d'échelle.

Producing country / Pays producteur	
Date of submission / Date de la soumission	
Date of ICC return / Date de la réponse ICC	(to be filled by EAtHC ICC / A remplir par l'ICC CHAtO)

Boxes reserved for EAtHC ICC / Cases réservées à l'ICC CHAtO       Not to be filled / Ne pas remplir

Ready for update in INT to GIS	INT number	Nat Number	Panel ID	Title	South Limit	North Limit	West Limit	East Limit	Scale	Explanation / Reason of the proposal
<b>New charts to introduce to INT scheme / Nouvelles cartes à introduire au schéma INT</b>										
<b>Existing charts to update in INT scheme (See Note) / Cartes existantes à mettre à jour dans le schéma INT (cf. Note)</b> Fill in the new limits and/or scale / Renseigner les nouvelles limites et/ou échelle										

<b>Charts to remove from INT scheme / Cartes à supprimer du schéma INT</b>										

Illustrations of proposals (optional) / Illustrations des propositions (facultatif)

- 1/ Producer fills the form and submits it to RCC
- 2/ RCC examines the submission, proposes INT numbers, validate the proposals and return the form completed
- 3/ Producers apply the changes on INT to GIS and transmit them to RCC
- 4/ RCC prepares CL to present the proposals to ICCWG



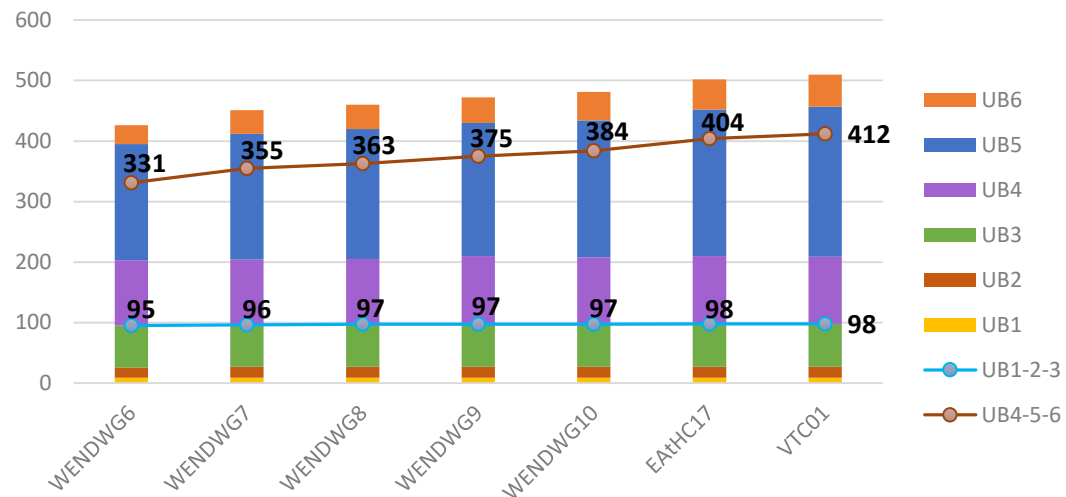


IHO

# 3 - REGION G ENC SCHEME

International Hydrographic Organization

## 3.1 Status of the ENC's



The number of ENC's available in the region continues to increase but the increase is with two trends:

- certain maturity of the scheme for UB 1, 2 & 3
- publication of more :
  - ❖ harbour ENC's (UB5 : + 2,5% in the last year)
  - ❖ berthing ENC's (UB6 : + 6% in the last year)

Region G	WEND-6	WEND-7	WEND-8	WEND-9	WEND-10	VTC01
UB1	9	9	9	9	9	9
UB2	17	18	18	18	18	18
UB3	69	69	70	70	70	71
UB4	108	108	108	113	111	111
UB5	192	208	215	220	226	248
UB6	31	39	40	42	47	53
Total	426	451	460	472	483	502



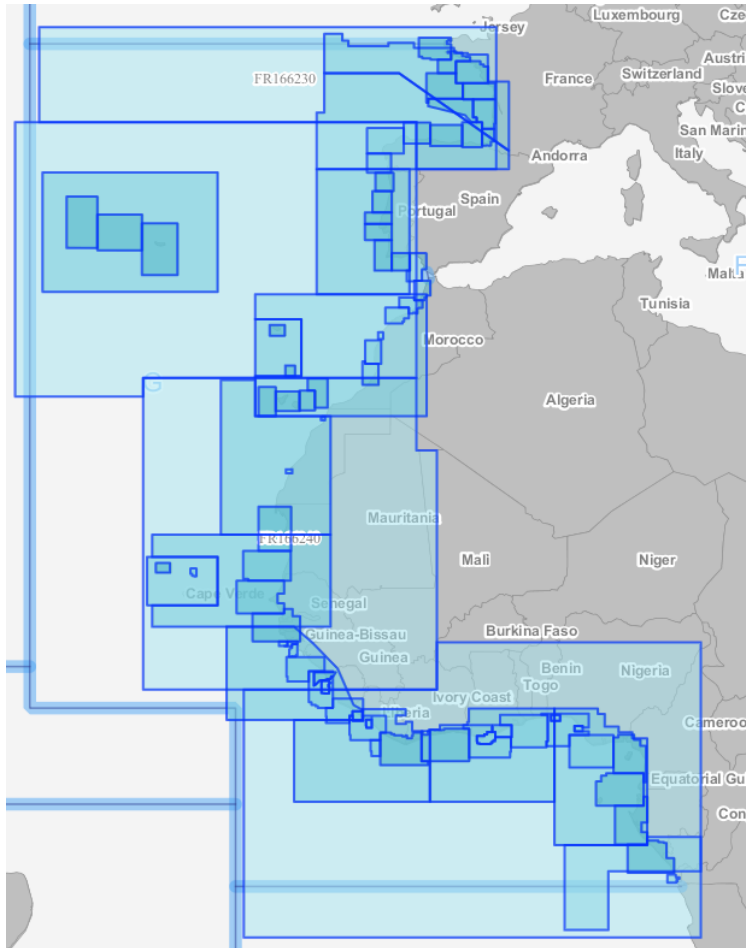
IHO

# 3 - REGION G ENC SCHEME

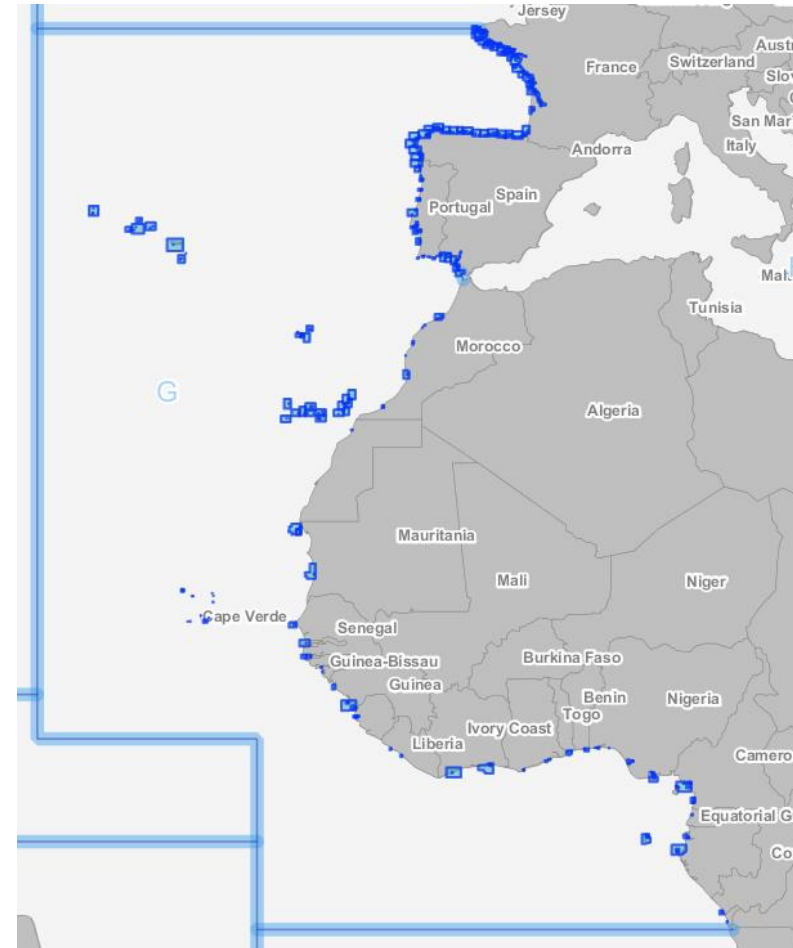
International Hydrographic Organization

- 3.1 Status of the ENCs

Usage Bands  
1, 2 & 3



Usage Bands  
4, 5 & 6





IHO

# 3 - REGION G ENC SCHEME

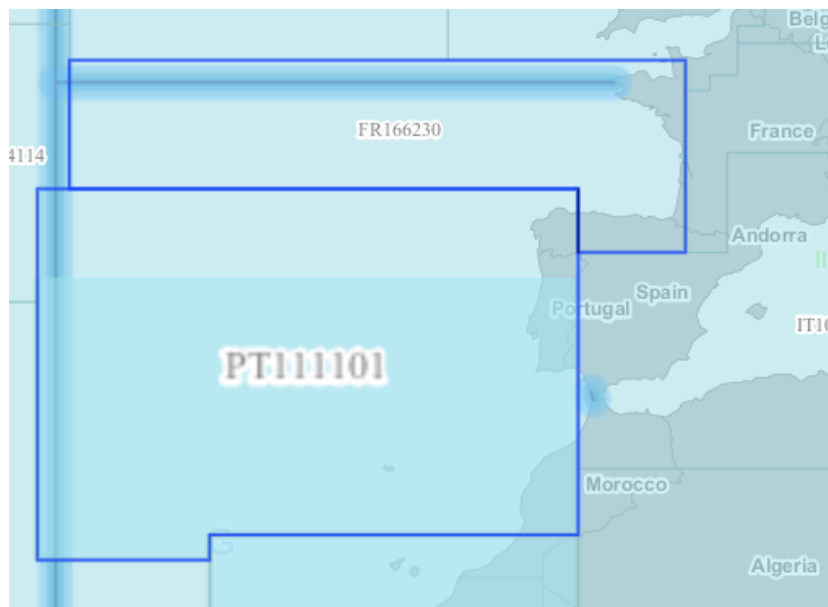
International Hydrographic Organization

## 3.2 ENC overlaps

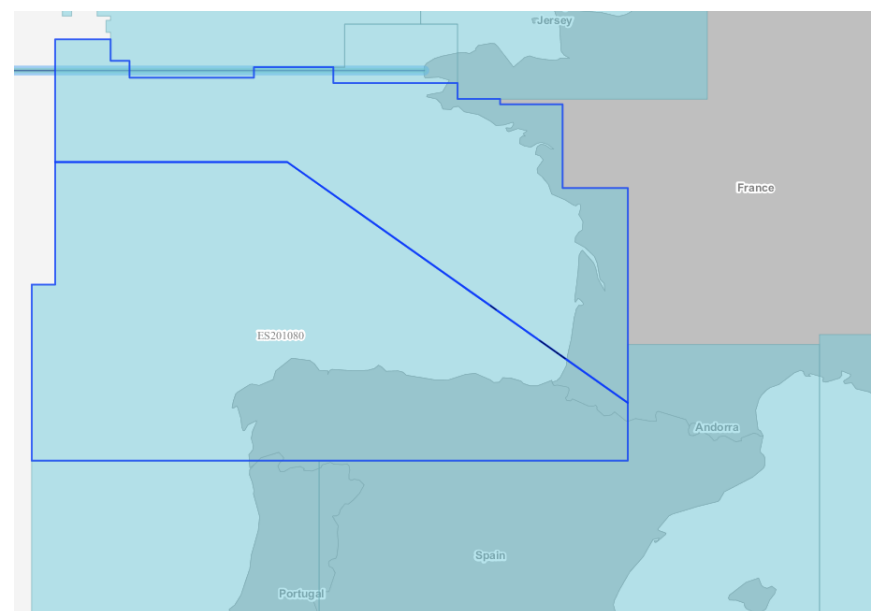
Source : IC-ENC EAthC Overlap Report presented during WENDWG12

### IC-ENC REGIONAL HYDROGRAPHIC COMMISSION OVERLAP REPORT - East Atlantic RHC - FEBRUARY 2022

ID	STATUS	RENC Membership	RHC	ENC 1	ENC 2	Usage Band	ENC 1 Scale	ENC 2 Scale	ENC 1 Version	ENC 2 Version	Overlap extent (Kmxkm) (m/square NM)	Content difference	Geog. Location	Shipping density	Size	Scale	Route patterns	ECDIS	Overall Severity of Risk	Justification
201	ACCEPT	IC-ENC - PRIMAR	EAtHC	ES201080	FR272110	2	700000	700000	3 (25)	2 (1)	1.6km x 39.8km	LOW	LOW	HIGH	LOW	LOW	LOW		ACCEPT	Small overlap in coastal location. High cells due to extent of cell.
198	ACCEPT	IC-ENC - PRIMAR	EAtHC	PT111101	FR166230	1	1500000	1500000	6 (11)	2 (2)	53m x 277745m	LOW	LOW	HIGH	LOW	LOW	LOW		ACCEPT	Small overlap on band 1 cell in coastal location, high sales due extent of cell



FR166230 – PT111101  
 Overlap : 14,7 km<sup>2</sup> (0,0009% of FR ENC area)



ES201080 – FR272110  
 Overlap : 63,7 km<sup>2</sup> (0,02% of FR ENC area)

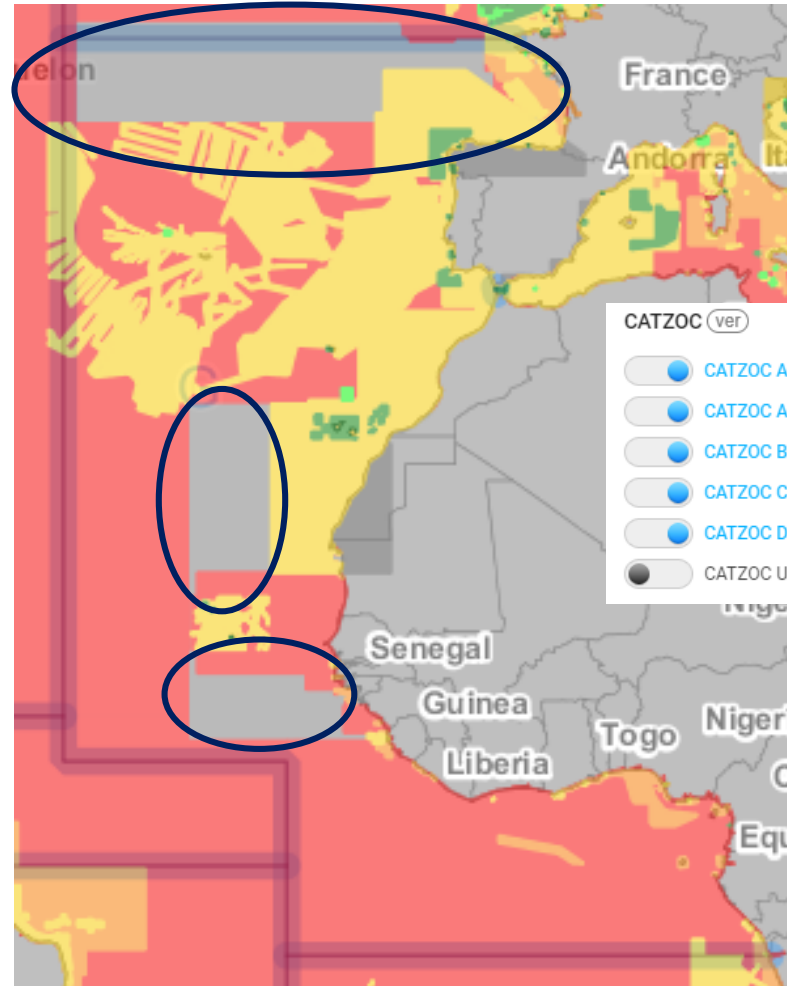
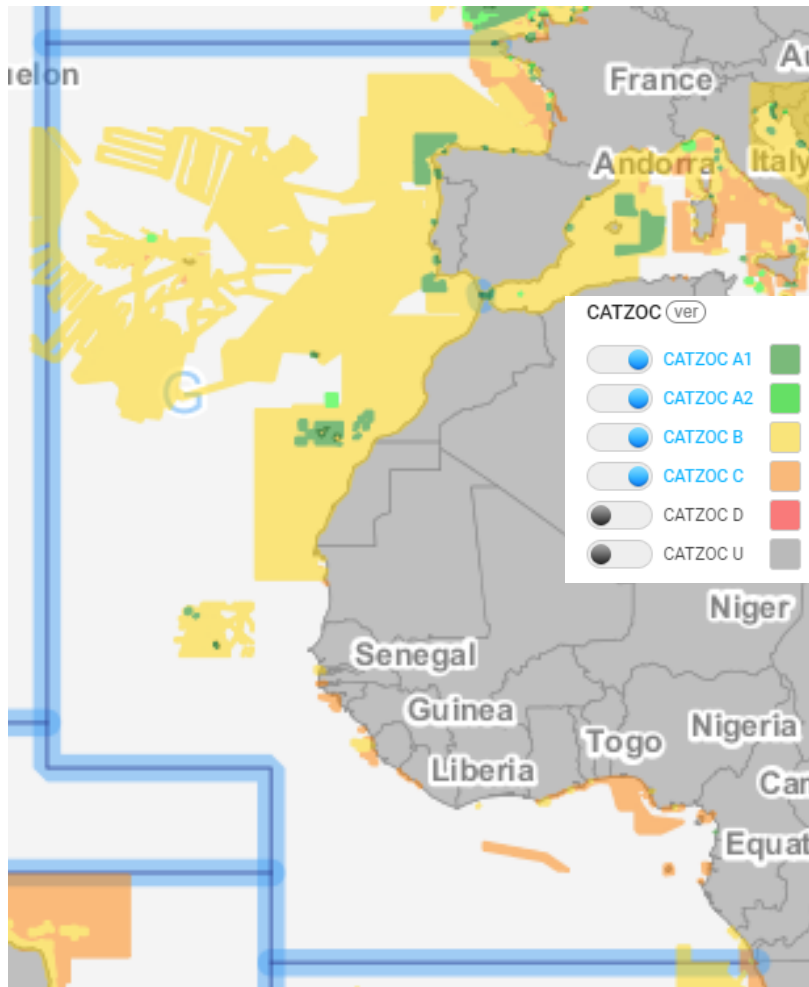


IHO

# 3 - REGION G ENC SCHEME

International Hydrographic Organization

## 3.3 Implementation of CATZOC in ENCs



### Action EAtHC (ICC) 16-13

- Member states ENC
- producers to populate the
- CATZOC values (1 to 5) of
- their ENC cells

Source : INToGIS (October 2023)



IHO

## 3- REGION G ENC SCHEME

International  
Hydrographic  
Organization

- 3.4 Implementation of an ENC Scheme for the region

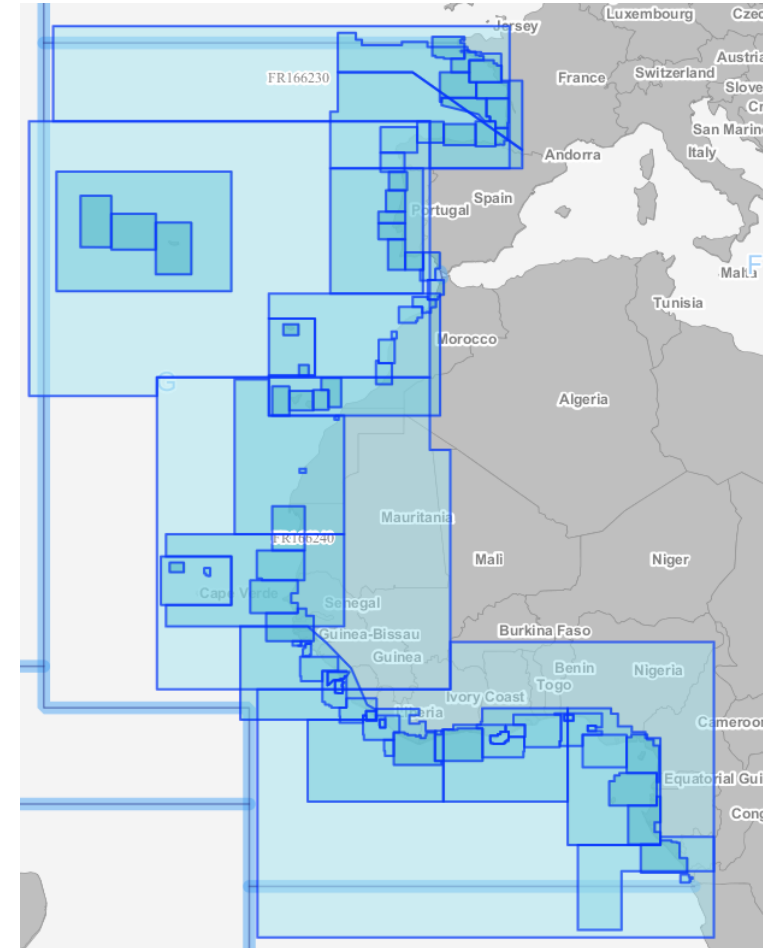
Part A: Section 200 of S-11 provides guidance for the preparation and maintenance of ENC schemes, similar to what is done for INT charts schemes.

INToGIS Phase II extends the visualization / management of INT charts scheme to ENCs.

### Actions EAtHC (ICC) 16-08, 16-09 & 16-10 related to this issue

#### Implementation of EAtHC ENC Scheme for UB 1, 2 & 3

Necessary exchange between IHO Secretariat and Region G RCC to specify how to manage ENC scheme via the dedicated interfaces of INToGIS when operational.





IHO

## 3- REGION G ENC SCHEME

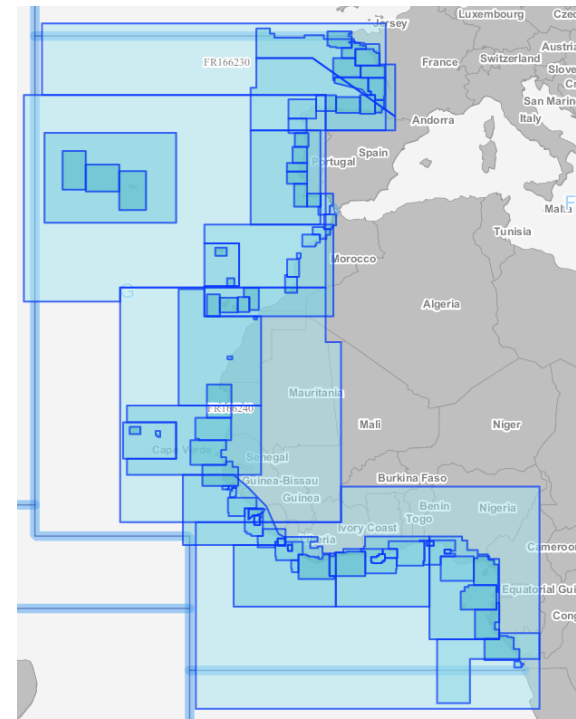
International  
Hydrographic  
Organization

- 3.4 Implementation of an ENC Scheme for the region

### Transition from S-57 ENCs to S-101 ENCs schemes

*To be noted: Following A-3 Decision: The dual-fuel concept for S-100 ECDIS is now included as an Annex 4 to the S-100 Roadmap. Will be maintained by HSSC through S-100WG*

**Question :** Considering the dual fuel period, and the need to make the management of the schemes as easiest as possible, do MS agree, as a first step, here to move towards an identical transition scheme from S-57 ENC to S-101 ENC ?





IHO

## 4 - WORLD PORT INDEX

International  
Hydrographic  
Organization

- Coastal States have the possibility to verify and update the information concerning their ports

Available on INToGIS without logging

Source : World Port Index (Pub. 150 – NGA)

### Links and contact information :

- World Port Index Contributors Map direct link

<https://nga.maps.arcgis.com/apps/MapSeries/index.html?appid=f9515d53e3e24ae7919f02eb8f554c96>

- World Port Index page on NGA's Maritime Safety Information website

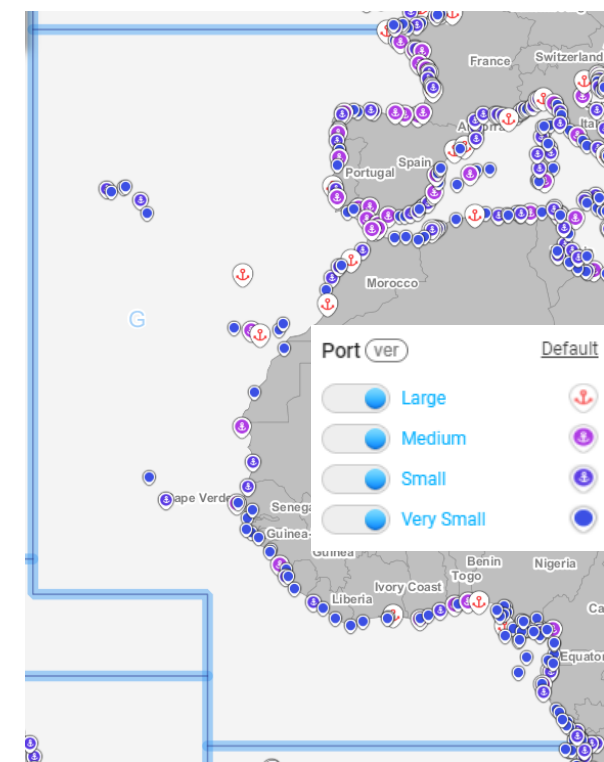
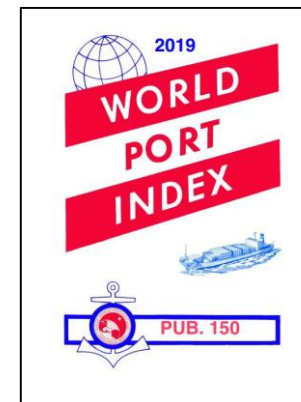
<https://msi.nga.mil/Publications/WPI>

- Notify for New Port Submissions or Editing Port Data:

MCDWPI@nga.mil

- Questions, Issues, Feedback:

MarHelp@nga.mil



- Detailed NGA presentation after last update

**(NIPWG9-13.1) :**

[https://iho.int/uploads/user/Services%20and%20Standards/NIPWG/NIPWG9/NIPWG9\\_2022\\_13.1A\\_EN\\_New\\_WorldPortIndex.pdf](https://iho.int/uploads/user/Services%20and%20Standards/NIPWG/NIPWG9/NIPWG9_2022_13.1A_EN_New_WorldPortIndex.pdf)



**IHO**

# 5 - PERMANENT EATHC ACTIONS RELATED TO ICCWG (1/2)

International  
Hydrographic  
Organization

Action	Description	Responsible
EAtHC Action (ICC) 16-01	INT & ENC Chart producers to check the consistency of the existing set of ENC with NGA's list of ports (Pub 150). To provide the regional charting coordinator with a set of proposals to complete large scales ENC schemes <i>Les producteurs de cartes INT et d'ENC doivent vérifier la cohérence de l'ensemble existant de cartes ENC avec la liste des ports de la NGA (Pub 150). Fournir au coordinateur cartographique régional un ensemble de propositions pour compléter les schémas de ENC à grande échelle.</i>	INT & ENC producers / Producteurs de cartes INT et ENC
EAtHC Action (ICC) 16-02	INT chart producers to provide first editions and details of the new editions of INT charts to the INT Chart Coordinator (or ICCWG) at least three months prior to every EAtHC or ICCWG meeting in accordance with S-11 (3.14.1 – c) <i>Les producteurs de cartes INT doivent fournir les premières éditions et les détails des nouvelles éditions des cartes INT au coordinateur des cartes INT (ou à l'ICCWG) au moins trois mois avant chaque réunion de la CHAtO ou de l'ICCWG, conformément à la norme S-11 (3.14.1 - c)</i>	INT chart producers / Producteurs de cartes INT
EAtHC Action (ICC) 16-03	The newly adopted INT charts, with the agreement of the INT Chart Producer Nation, to be subsequently transferred to the IHO Secretariat for its chartroom reference collection and internal use (database validation, consultation, etc.) <i>Les cartes INT nouvellement adoptées, avec l'accord de la nation productrice de cartes INT, seront ensuite transférées au Secrétariat de l'OHI pour sa collection de référence de la salle des cartes et son utilisation interne (validation de la base de données, consultation, etc.)</i>	INT chart coordinator / Coordinateur des cartes INT
EAtHC Action (ICC) 16-04	Chart producers to provide the regional charting coordinator with an update of the list of on-line chart catalogues, either directly or systematically when updating the Yearbook <i>Les producteurs de cartes fournissent au coordinateur cartographique régional une mise à jour de la liste des catalogues de cartes en ligne, soit directement, soit systématiquement lors de la mise à jour de l'annuaire.</i>	INT chart producers / Producteurs de cartes INT
EAtHC Action (ICC) 16-05	Chart producers to update INT chart details (limits, scale, format) using INTOGIS 'web manager' interface <i>Les producteurs de cartes peuvent mettre à jour les détails des cartes INT (limites, échelle, format) à l'aide de l'interface "web manager" d'INTOGIS</i>	INT chart producers / Producteurs de cartes INT
EAtHC Action (ICC) 16-06	Regional Charting Coordinator to submit the new INT proposals/ major updates to the approval of the region G ICCWG in accordance with the ICCWG ToRs & RoPs and using the form made available <i>Le coordinateur cartographique régional soumet les nouvelles propositions INT/les mises à jour majeures à l'approbation de l'ICCWG de la région conformément aux termes de référence et aux règles de procédure de l'ICCWG et en utilisant le formulaire mis à disposition.</i>	INT chart coordinator / Coordinateur des cartes INT

23<sup>rd</sup> of November 2023 – 23 novembre 2023



**IHO**

# 5 - PERMANENT EATHC ACTIONS RELATED TO ICCWG (2/2)

International  
Hydrographic  
Organization

Action	Description	Responsible
EAtHC Action (ICC) 16-09	ENC producers to enter their ENC projects via the "manager" interface of the INTToGIS II portal. <b>WHEN OPERATIONAL</b> <i>Les producteurs d'ENC doivent saisir leurs projets d'ENC via l'interface "manager" du portail INTToGIS II. <b>LORSQU'IL SERA OPÉRATIONNEL</b></i>	ENC producers / Producteurs d'ENC
EAtHC Action (ICC) 16-10	ENC producers to send their ENC projects (production plan in shape format) to the charting coordinator <i>Les producteurs d'ENC doivent envoyer leurs projets ENC (plan de production sous forme de formulaire) au coordinateur des cartes</i>	ENC producers / Producteurs d'ENC
EAtHC Action (ICC) 16-11	Upon the recommendations based on the proposals made by the NCWG on the Future of the Nautical Paper Chart, Member States should focus on ENC Schemes, but still follow applicable IHO Resolutions and Standards for any continuing INT chart production <i>Sur la base des recommandations fondées sur les propositions formulées par le groupe de travail national sur l'avenir de la carte marine papier, les États membres devraient se concentrer sur les schémas ENC, tout en continuant à respecter les résolutions et les normes de l'OHI pour la poursuite de la production de cartes INT</i>	INT & ENC producers / Producteurs de cartes INT et ENC
EAtHC Action (ICC) 16-12	Member States to note the information on ECDIS anomalies and support the implementation of the recommendations given by the ENCWG <i>Les États membres doivent prendre note des informations sur les anomalies de l'ECDIS et soutenir la mise en œuvre des recommandations formulées par l'ENCWG</i>	ENC producers / Producteurs d'ENC
EAtHC Action (ICC) 16-13	Member states ENC producers to populate the CATZOC values (1 to 5) of their ENC cells <i>Les producteurs d'ENC doivent renseigner les valeurs des CATZOC (1 à 5) de leurs cellules ENC.</i>	ENC producers / Producteurs d'ENC
EAtHC Action (ICC) 17-01	EAtHC Members States to examine their ports with their information and location in the World Port Index and to submit to NGA proposal for correction or modification through the dedicated Interface <i>Les États membres de la CHAtO doivent examiner leurs ports avec leurs informations et leur emplacement dans le World Port Index et soumettre à la NGA des propositions de correction ou de modification par l'intermédiaire de l'interface dédiée</i>	All coastal States / Tous les États côtiers



IHO

## 6 - EVOLUTION OF THE ICCWG SCOPE REGARDING TO IHO STRATEGIC PLAN

International  
Hydrographic  
Organization

- **IHO Strategic Plan** focuses on 3 main cross-sectional objectives :
  - New services for the mariners (S-1xx products)
  - Increase consistency, quality and distribution efficiency of hydrographic data
  - Improve seabed knowledge
- **Current scope of ICC-WG** : management of INT chart and ENC (S-57) schemes (coverage regarding to navigational needs, ENC overlaps, CATZOC attributions, information updates...)



IHO

# 6 - EVOLUTION OF THE ICCWG SCOPE REGARDING TO IHO STRATEGIC PLAN

- **Roadmap for the S-100 Implementation Decade (2020-2030) – Annex 2 : S-100 Timelines**

- The updated S-100 timeline is found in Annex 2 to the S-100 Roadmap.
- MS can expect an IHO CL early in November 2024 with the request to approve the first package of the S-100 product specifications.
- Will be endorsed by HSSC before the IHO CL is provided.

## Phase 1 Route Monitoring Mode

S-101 ENC  
S-102 Bathymetry  
S-104 Water Level  
S-111 Surface Currents  
S-124 Navigational Warnings  
S-129 UKC Management

## Critical Framework

IHO Geospatial Information Registry  
S-98 Interoperability Specification  
S-100 Universal Hydrographic Data Model  
S-128 Catalogue of Nautical Products  
S-164 Test Data Set for S-100 and ECDIS  
Type Approval

The Council is invited to note that the Phase 1 S-100 product specifications are expected to be ready in an operational edition for IHO MS approval early November 2024.

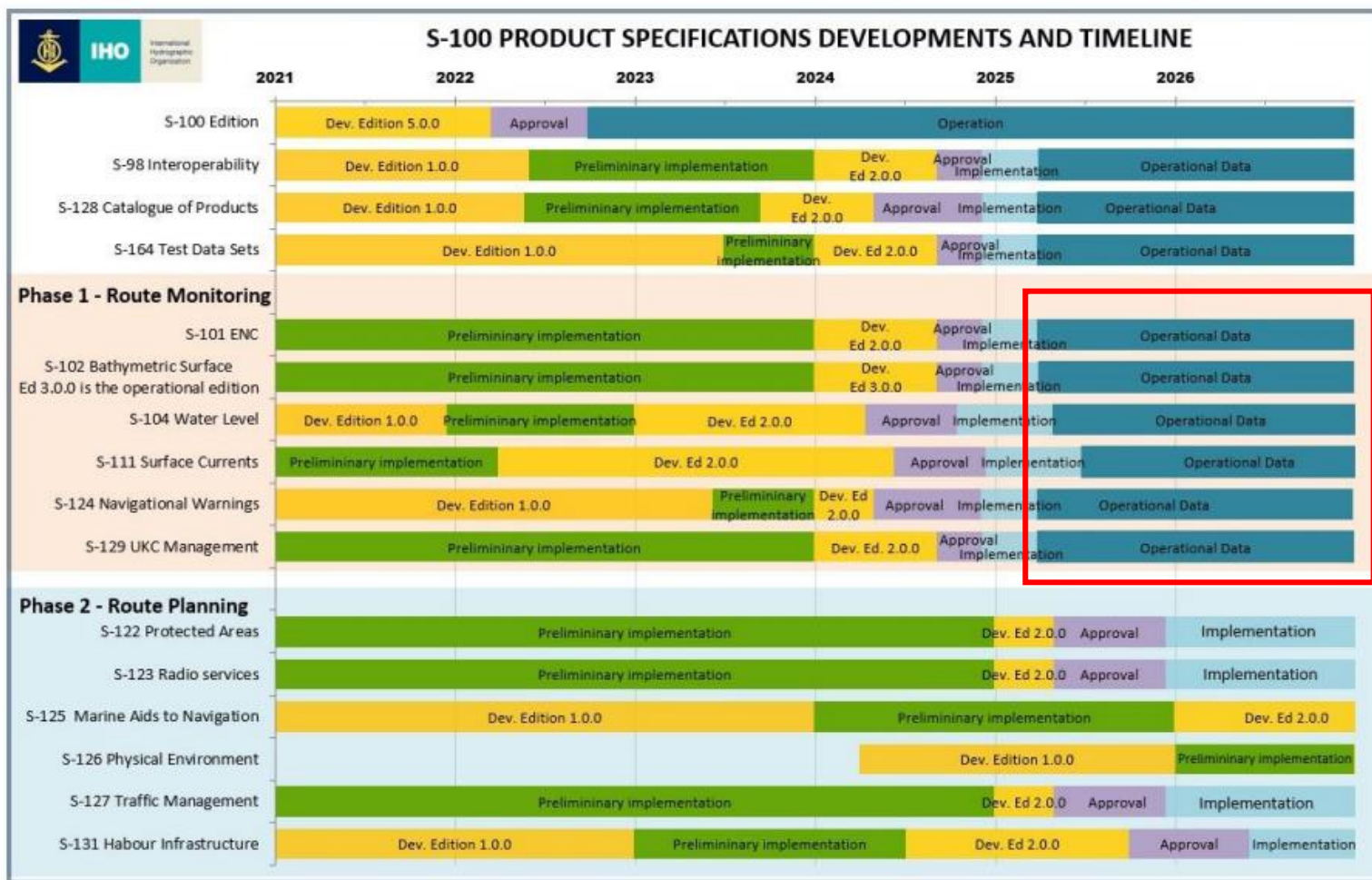


IHO

# 6 - EVOLUTION OF THE ICCWG SCOPE REGARDING TO IHO STRATEGIC PLAN

International Hydrographic Organization

## Roadmap for the S-100 Implementation Decade (2020-2030) – Annex 2 : S-100 Timelines



This S-100 timeline is updated: July 9th, 2023.

- Development of Edition 2.0.0 of S-101 Product Specification by the end of mid-2024
- Mid-2025 / 2026 > Start of the S-101 operational data production
- **Priority to put on S-101**
- To extend ICCWG scope to S-101 ENCs, the first step is to implement the S-57 ENC scheme via INTToGIS and to maintain it with **planned** and produced ENCs

23<sup>rd</sup> of November 2023 – 23 novembre 2023