



**NIGERIAN NAVY HYDROGRAPHIC OFFICE – RECENT
ACTIVITIES, FUTURE PLANS AND S-1XX
NATIONAL IMPLEMENTATION
STRATEGY**



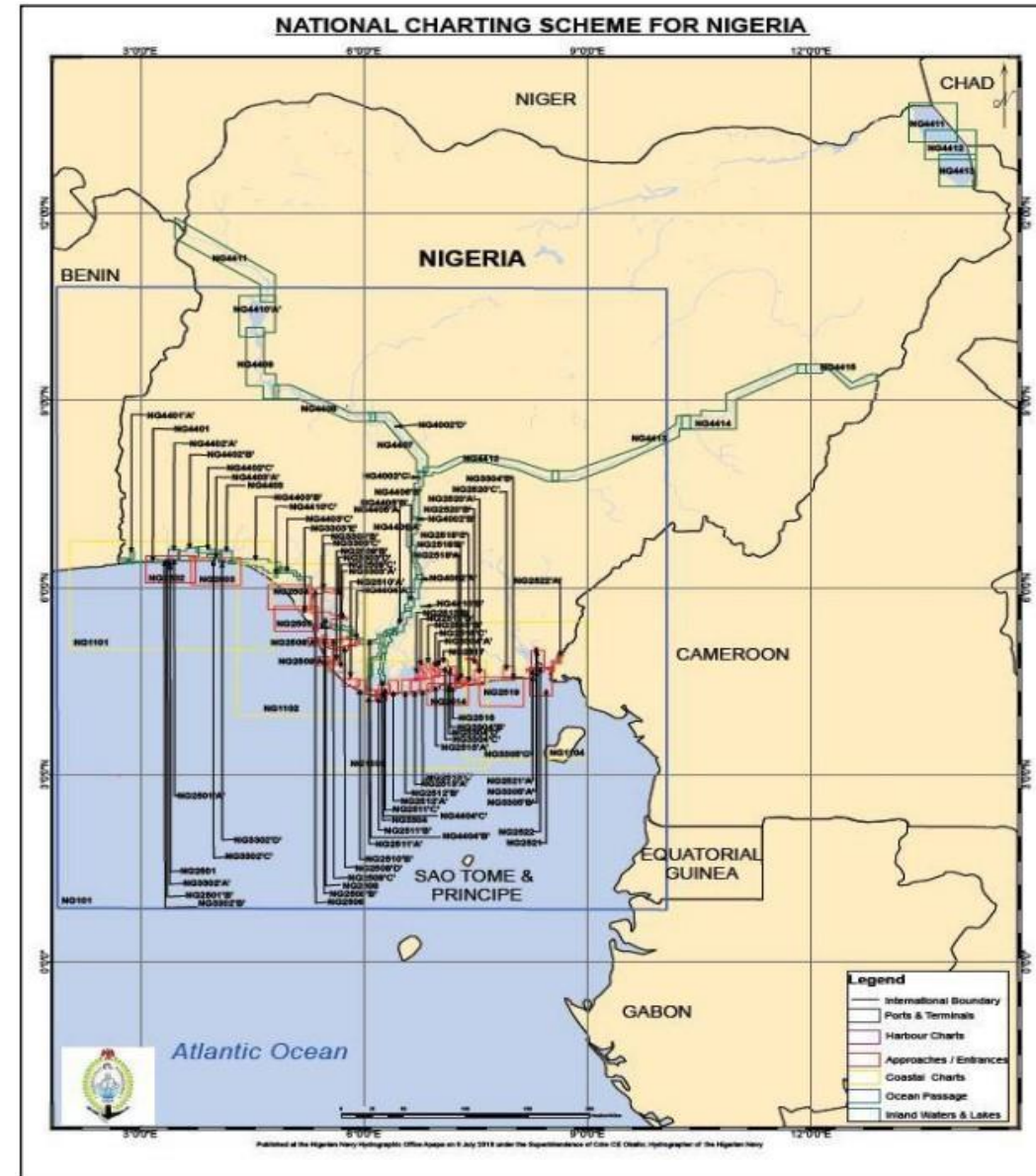
OVERVIEW OF S-57 EFFORTS



Overview of S-57 Charting Efforts

National Charting Scheme

- Developed in **2017**
- Blueprint to guide NNHO's hydrographic survey and charting of the nation's water.

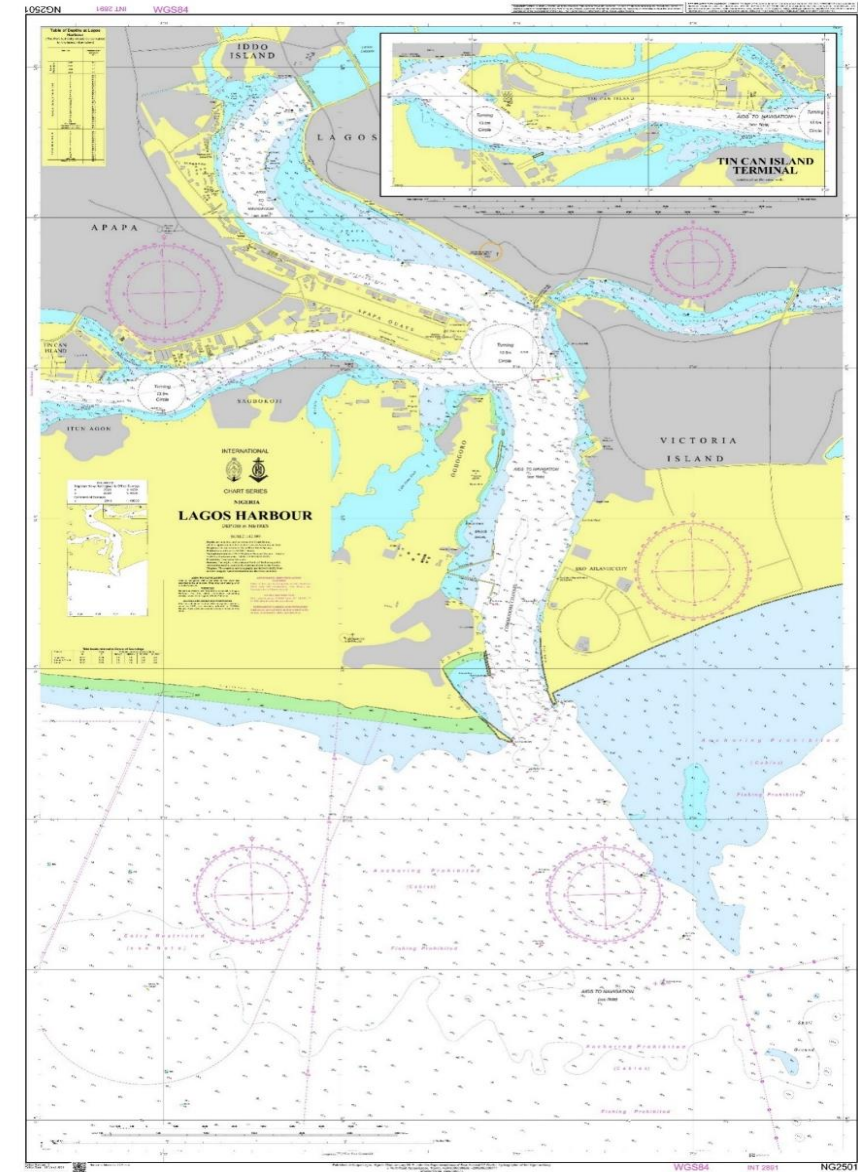




Overview of S-57 Charting Efforts

NG2501 – Lagos Harbour Chart

- The first indigenous INT chart (INT 2891)
- Published in **January 2019**
- **Three** editions of the charts have been produced till date. **3rd** edition dated **22 March 2021**.





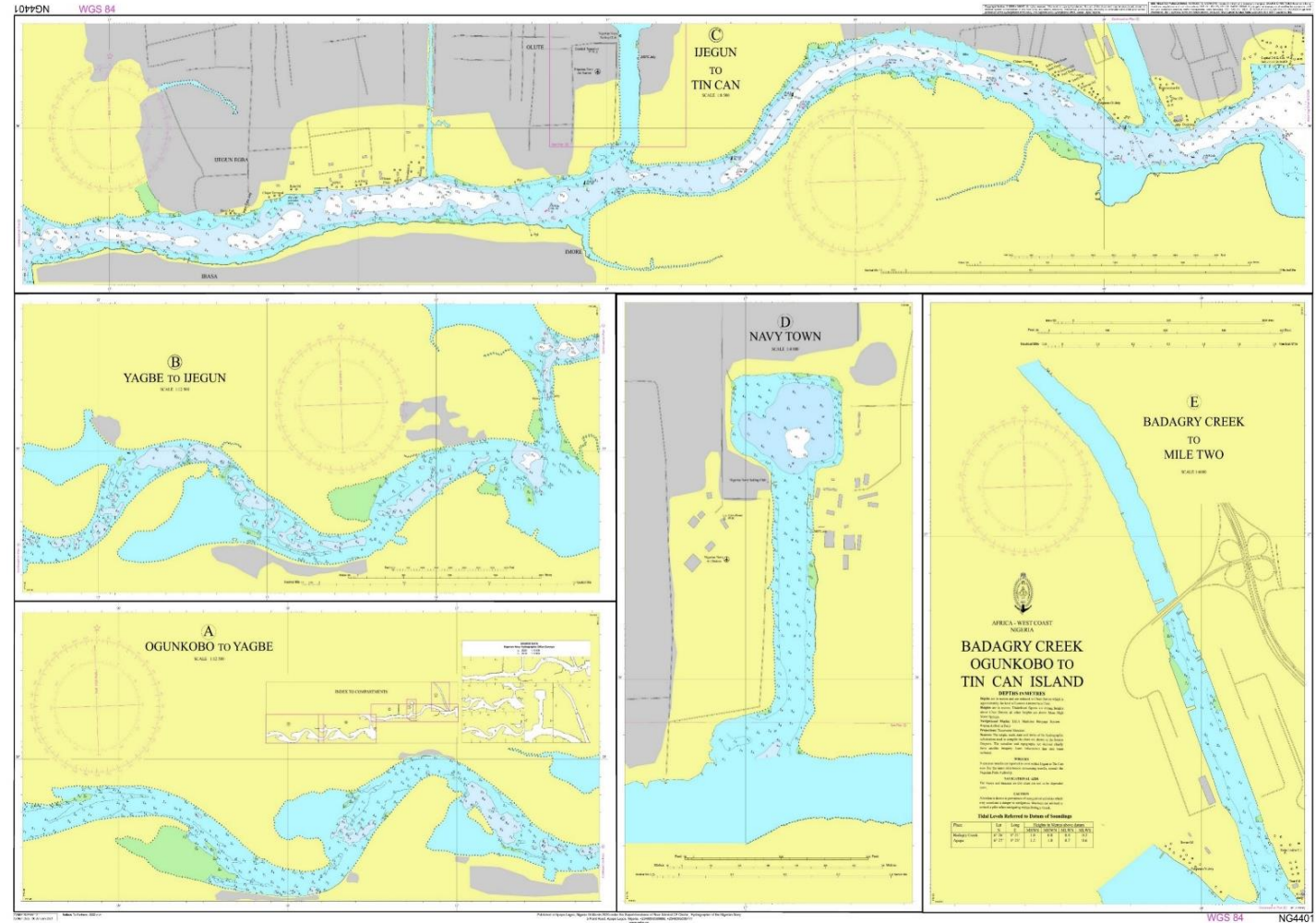
RECENT CHARTING ACTIVITIES



Recent Charting Activities

NG4401 – Badagry Creek; Ogunkobo to Tin Can Island

- Published in March 2020
- Connecting Badagry area to the Tin Can Island of Lagos Harbour Chart

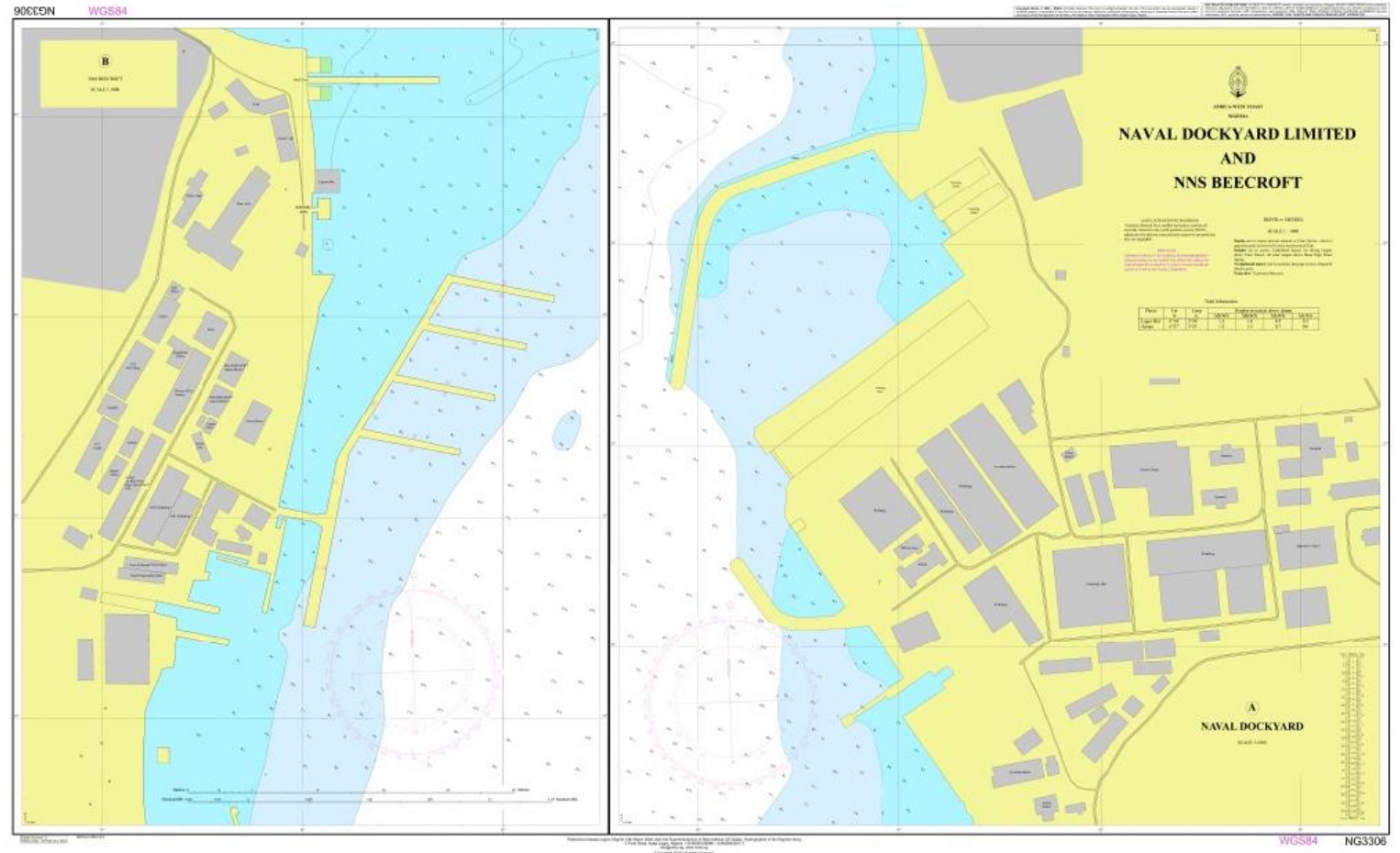
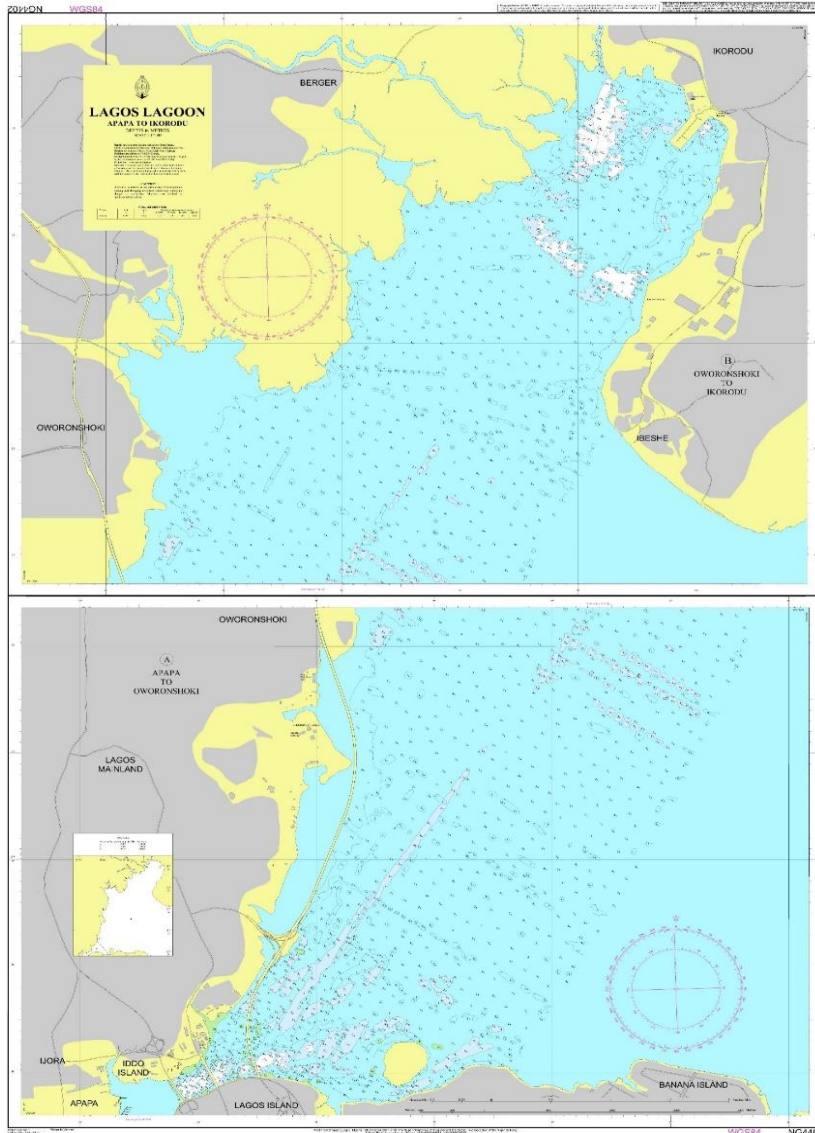


NG4401 - Badagry Creek; Ogunkobo To Tin Can Island



Recent Charting Activities

NG4401 – Lagos Lagoon; Apapa to Ikorodu

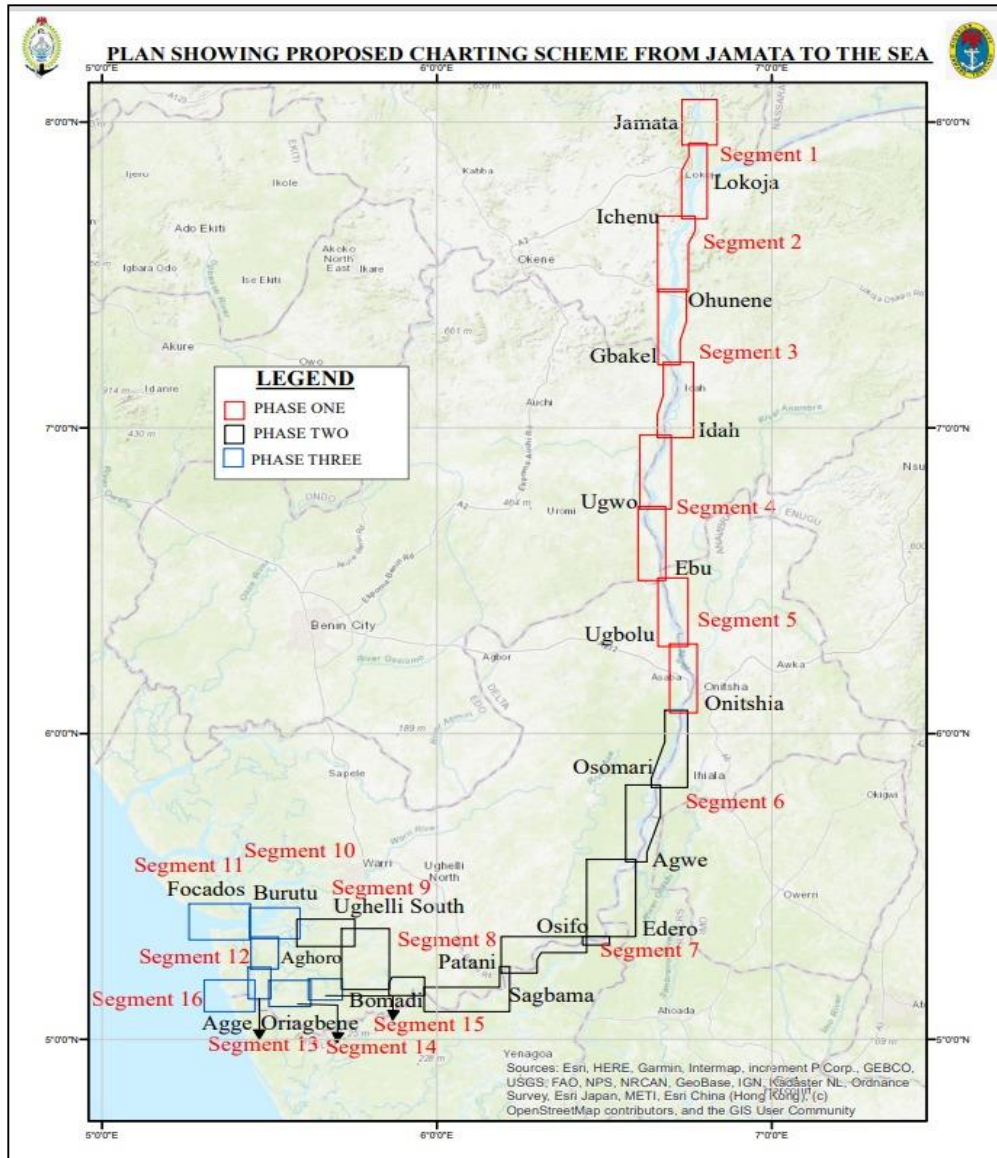


NG3306– Naval Dockyard and NNS BEECROFT

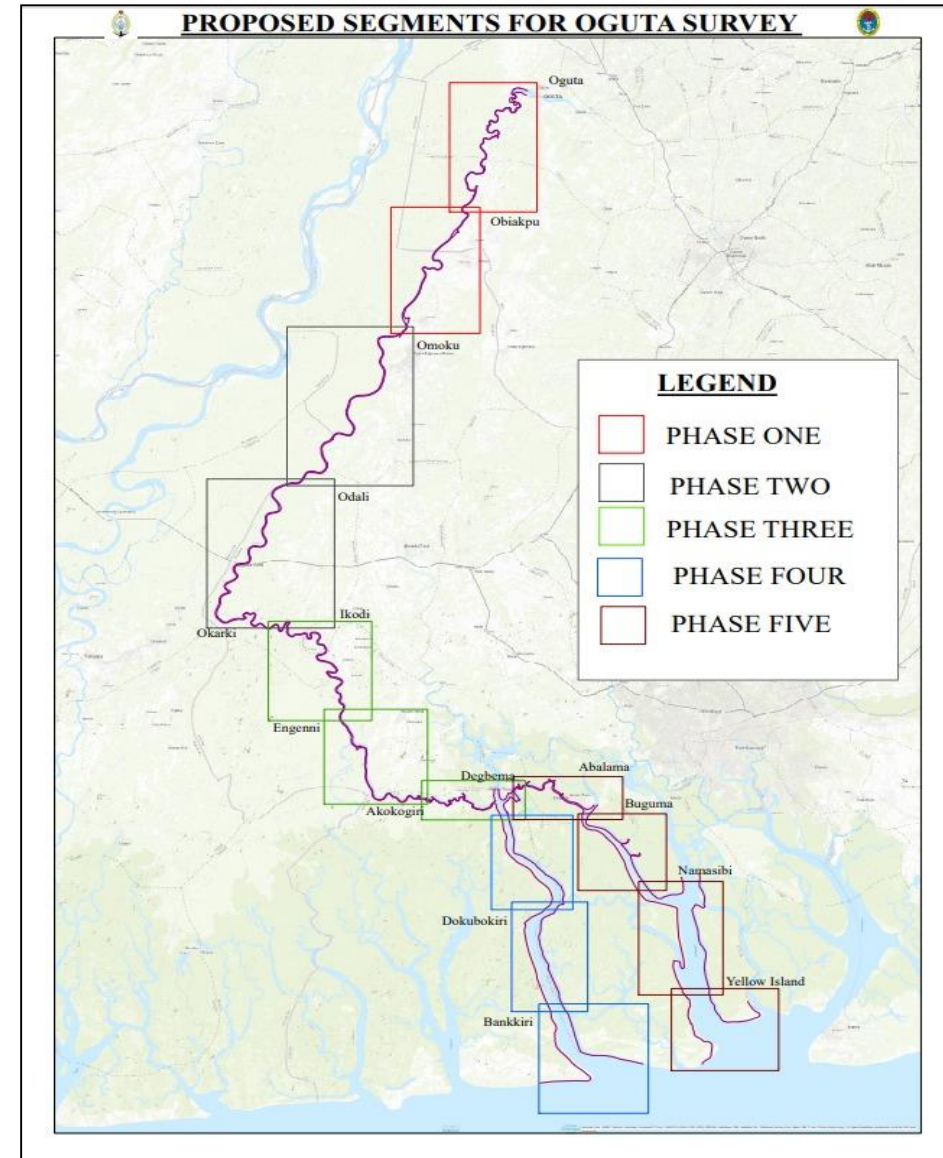


Recent Charting Activities

Lower Niger River Survey & Charting



Oguta Lake Survey & Charting





Ongoing/Future Charting Activities

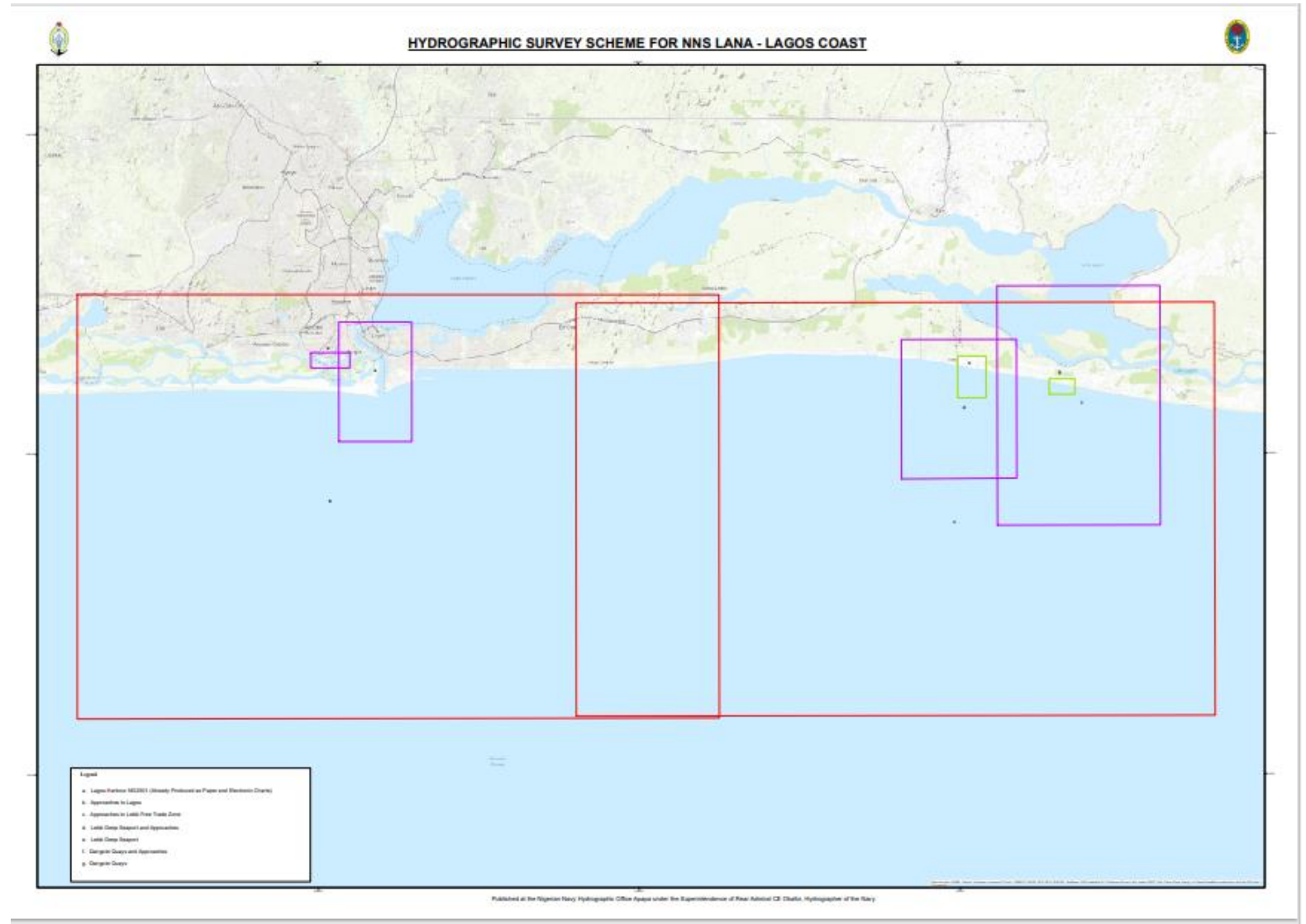
Coastal Surveys

Approaches to Lagos

- Commenced survey in Oct 2021
- Percentage completed – 80%

Approaches to Lekki/Dangote Quays

- Commencing survey in Jan 2024



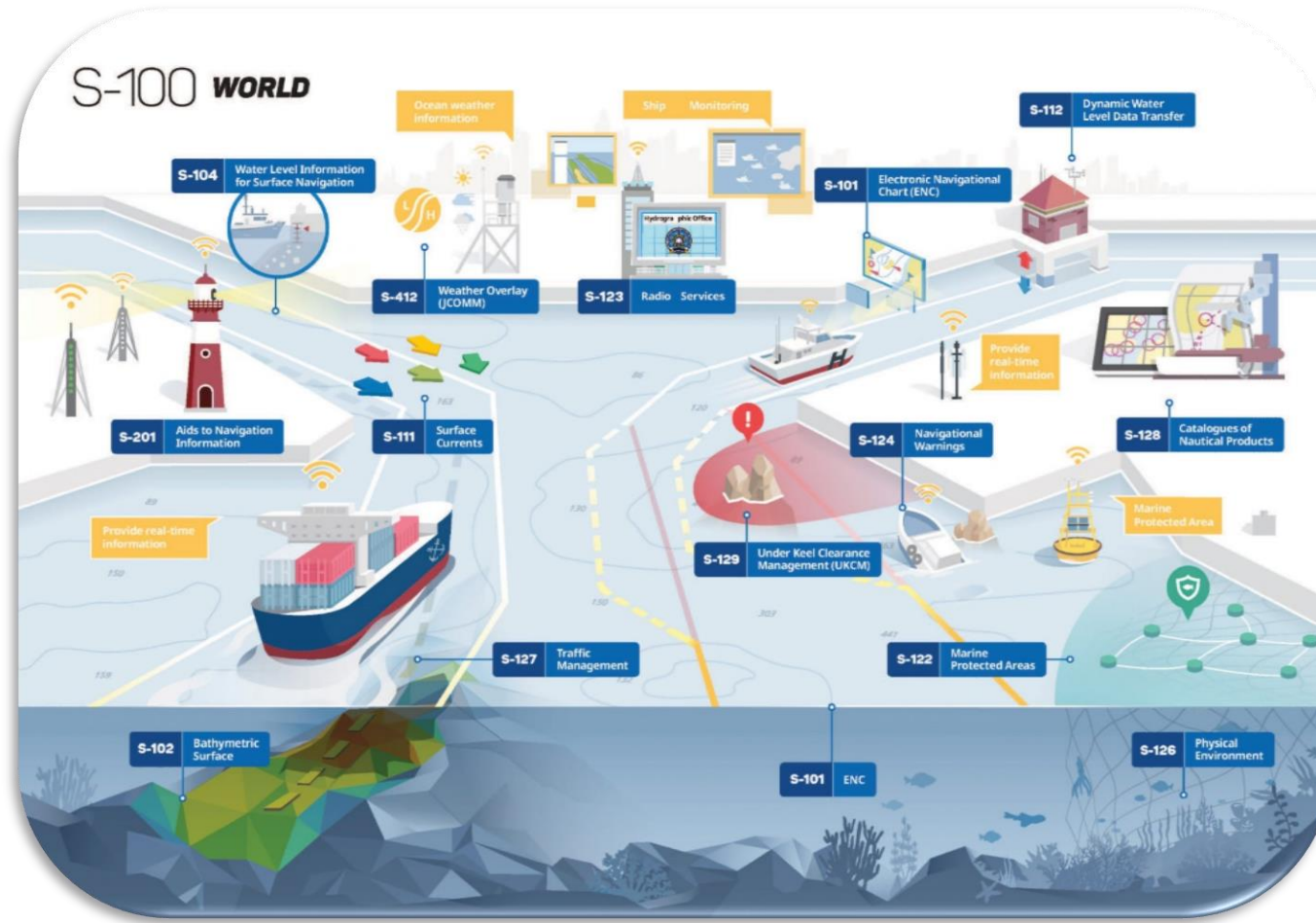
Survey Scheme of Lagos Coast for NNS LANA



S-1XX NATIONAL IMPLEMENTATION



S-1xx National Implementation



S-1xx Implementation National Strategy?

**Still in developmental
phase**



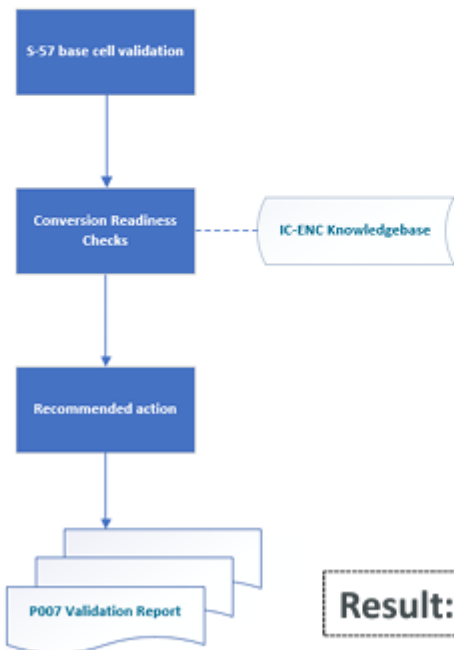
S-1xx National Implementation

S-57 ENC to S-101

IC-ENC

Conversion Readiness Checks

Input: *S-57 base cell validations*



Result: *Recommended action*

Source: LMS Course_Conversion Readiness Checks

ENC form P007

FE000000007 Feature Type: DEPARE Depth area

Conversion Readiness Checks:

In preparation for the transition to S-101, we are starting to incorporate custom checks into your validation feedback reports to help you prepare and optimise your ENCs for conversion from S-57 to S-101. These checks are included as part of the Conversion Readiness Service.

This cell contains the following recommendations based on the currently available Conversion Readiness Checks:

2. SurendEmpty

Description:

This check has identified an M_QUAL features where SUREND is empty.

Impact:

SUREND has been replaced by complex attribute surveyDateRange and sub-attribute dateEnd, and is now a mandatory attribute in S-101. If SUREND is not populated before conversion, surveyDateRange and dateEnd will be left empty (null).

Reference:

S-65 Annex B 1.1.0 clause 2.2.3.1

Action:

Data Producers are advised to populate SUREND where possible to ensure this information is converted to surveyDateRange and dateEnd.

Instance:

Object	FRID
M_QUAL	FE-000032, FE-000058, FE-000060, FE-000137, FE-000188, FE-000232, FE-000252, FE-000276, FE-000296, FE-000312, FE-000317, FE-000330, FE-000375

Validation Software Error Message:

SurendEmpty

SUREND has been replaced by complex attribute surveyDateRange and sub-attribute dateEnd, and is now a mandatory attribute in S-101. If SUREND is not populated before conversion, surveyDateRange and dateEnd will be populated as empty (null).</Message>

S57 Reference: S-65 Annex B 1.1.0 clause 2.2.3.1</Reference>
FE0000000032 Feature Type: M_QUAL Quality of data

3. M_SRELAtribution

Description:

This check has identified M_SREL features with QUAPOS = 1.

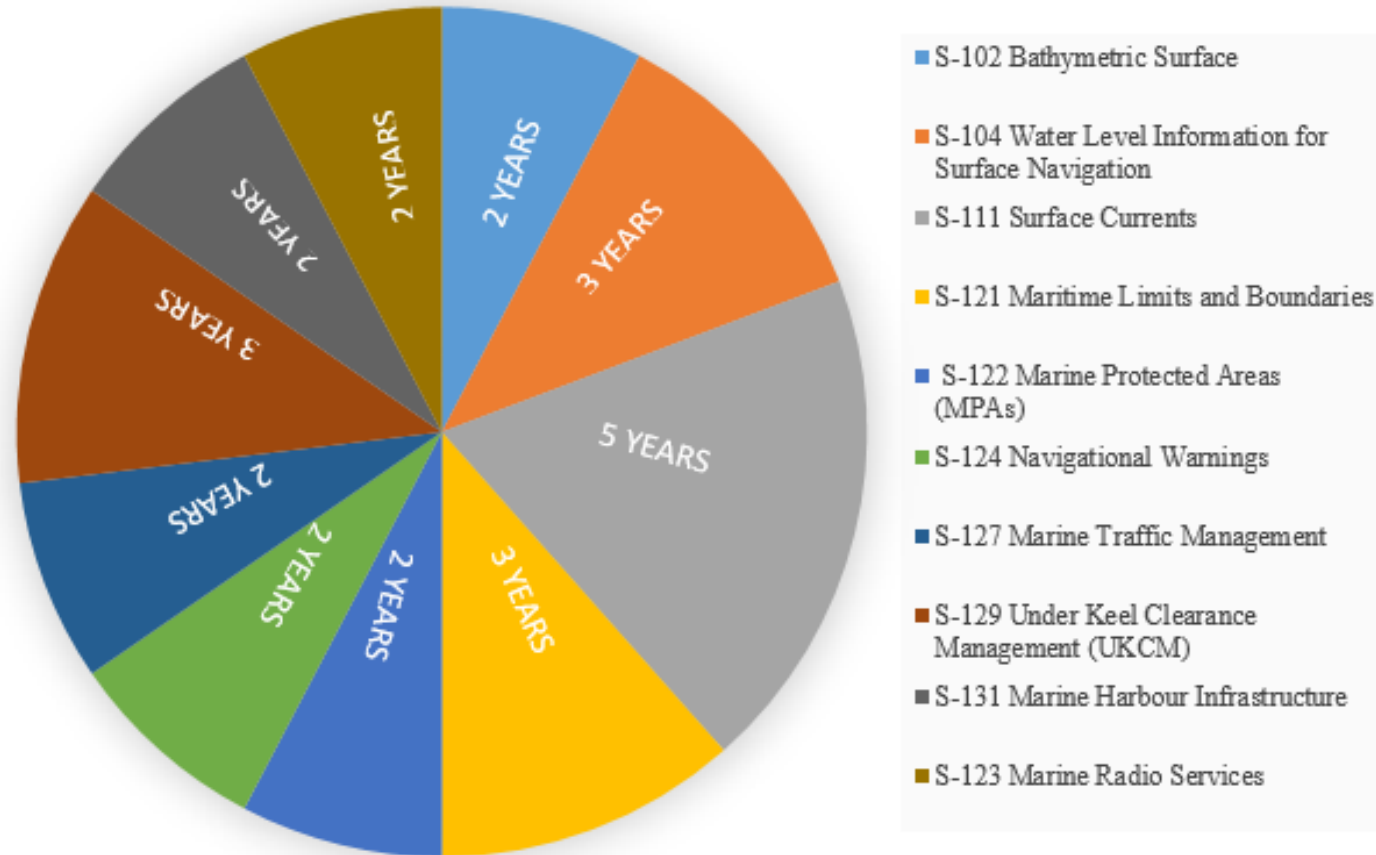
Impact:

Only M_SREL features with QUAPOS = 4 (approximate) will be converted to qualityOfHorizontalMeasurement on SurveyReliability in S-101.



S-1xx National Implementation

S-100 Product Development and Timeline (Tentative)





S-1xx National Implementation

Challenges & Way Forward

- ❑ Capacity Building
- ❑ Cross-Agency Implementation



Source: Korea Hydrographic and Oceanographic Agency

