



esri

THE
SCIENCE
OF
WHERE

A Hydrospatial Information System, The Next Frontier for Hydrographic Offices

Rafael Ponce

Esri Global Maritime Executive Consultant

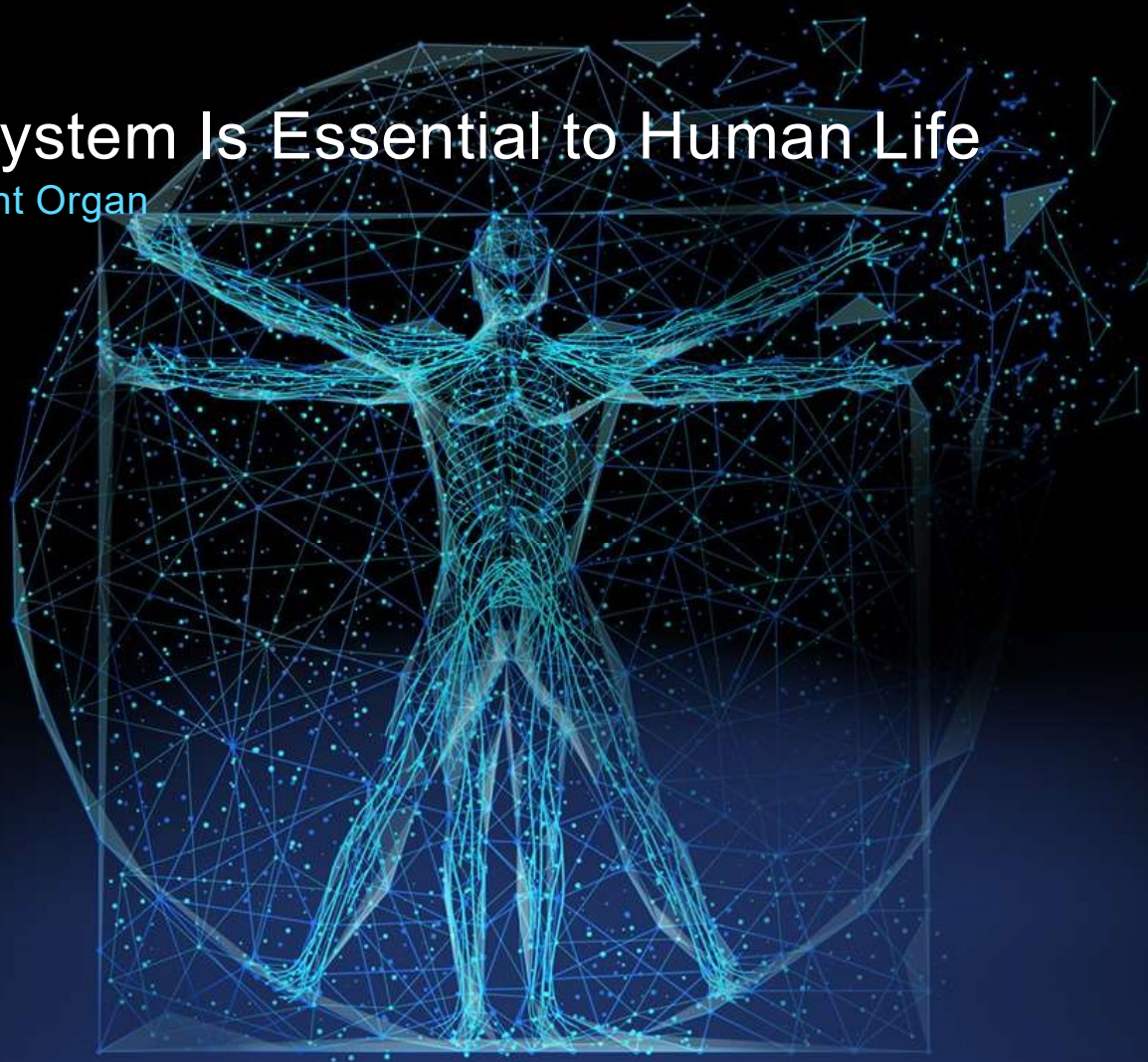




VISION
GIS AS AN
INTELLIGENT
NERVOUS SYSTEM

A Nervous System Is Essential to Human Life

Our Most Important Organ



OUR WORLD

RESEMBLES A
LIVING ORGANISM

A Complex and
Interconnected
Ecosystem

Self-Healing
and Resilient

... Always Changing

... And Humans
Are Part of It



Our World Needs a Nervous System

An Intelligent and Responsive Platform



Creating More Understanding

... Collaboration and

... Action

... *Hydrography Is Essential*

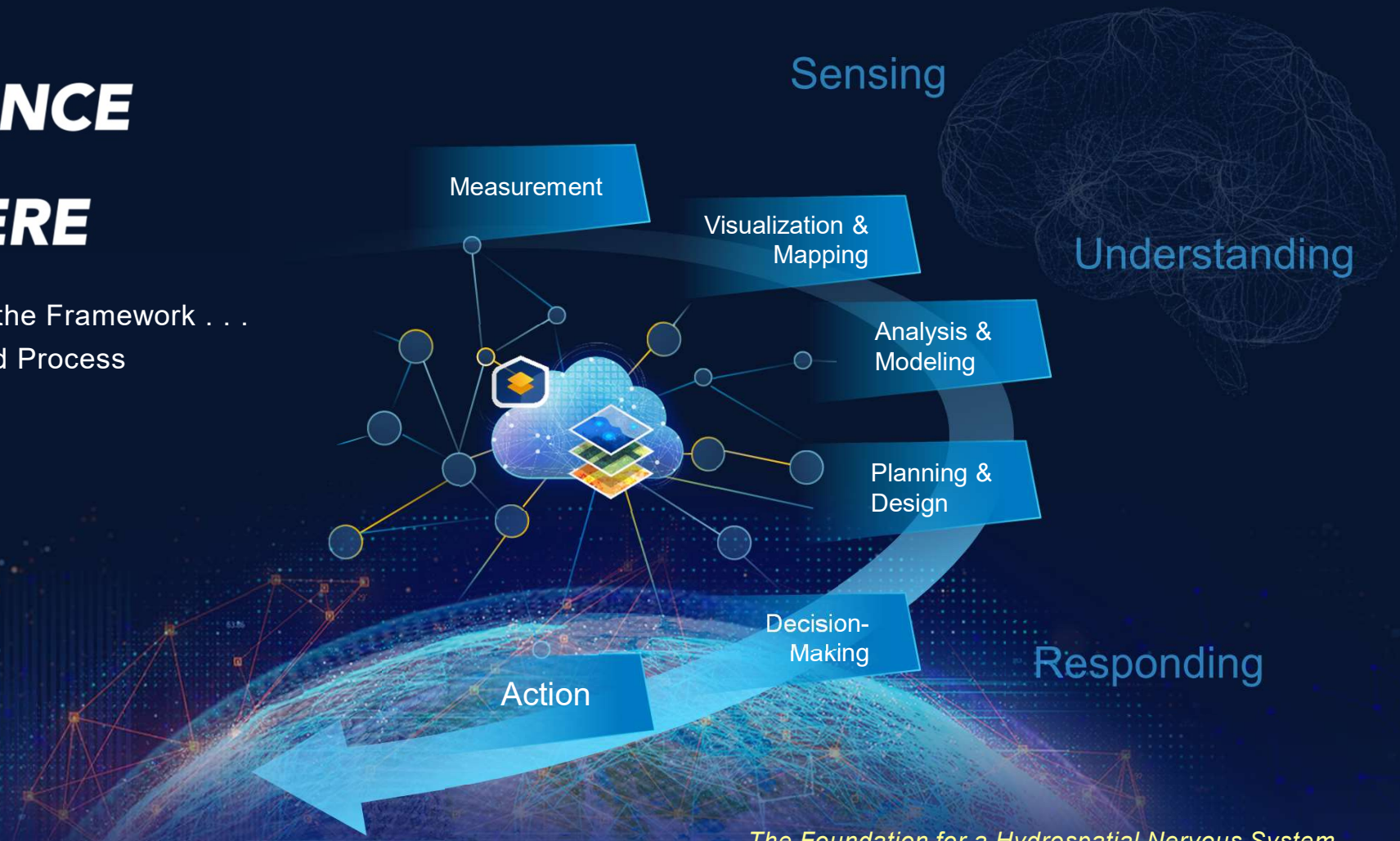
Digital Technology Is Transforming Our World

Enabling Humans to Be Enormously Successful



THE SCIENCE OF WHERE

Provides the Framework . . .
. . . And Process



The Foundation for a Hydrospatial Nervous System

A Hydrospatial Infrastructure

Supports Individuals . . .
. . . And Organizations of All Sizes

Distributed
. . . And
Interconnected

Engaging
Everyone

Communities

Organizations

Departments

Teams

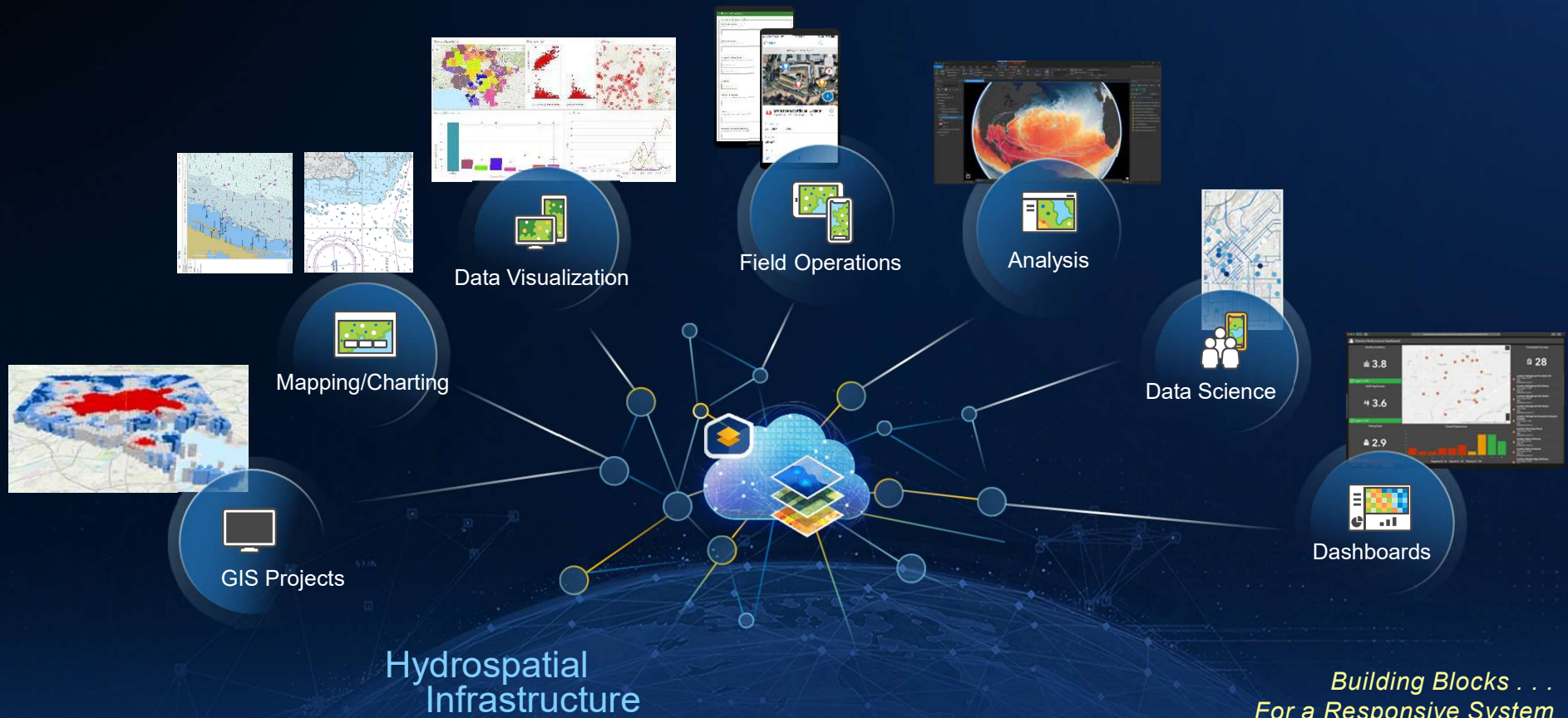
Individuals

GIS at Scale

Sharing and
Collaboration



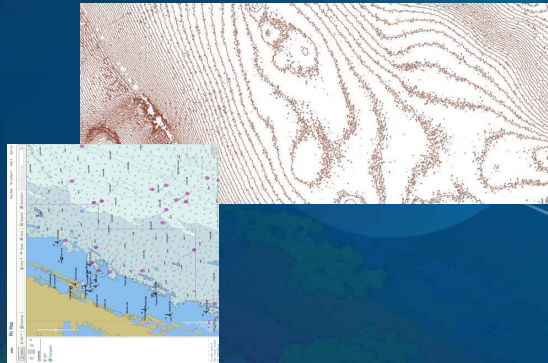
Delivering Powerful Capabilities Across Organizations



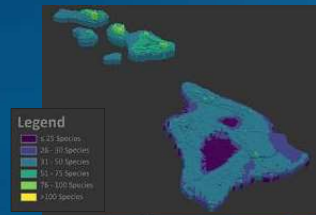
Supporting Geo-Enabled Systems

Complete Systems with Specialized Workflows and Applications

Automated Nautical Charting



Coastal Planning



Emergency Management



Ocean Analytics



Hydrospatial Infrastructure



Integrating Open Science, AI and Machine Learning

Revolutionizing Spatial Analysis and Data Science

Python Notebooks



Analytic Services



Python API



Integration



AI & Machine Learning

Open Science Tools

Open Science

Big Data
GeoAnalytics

Spatial Analysis
& Geoprocessing

Hydrospatial
Infrastructure



A Hydrospatial Infrastructure will Transform Organizations

Interconnecting Information, Processes and Workflows . . .

. . . All Happening at the Same Time



Creating Responsive Organizations

*Using the Power of Hydrography to Understand
. . . And Integrate Everything at Sea*

The Hydrospatial Revolution Is Just Beginning . . .

The Hydrospatial Nervous System . . .

. . . That Emerges



. . . Will Profoundly Transform Our World

This is our baseline...

S-100 WORLD

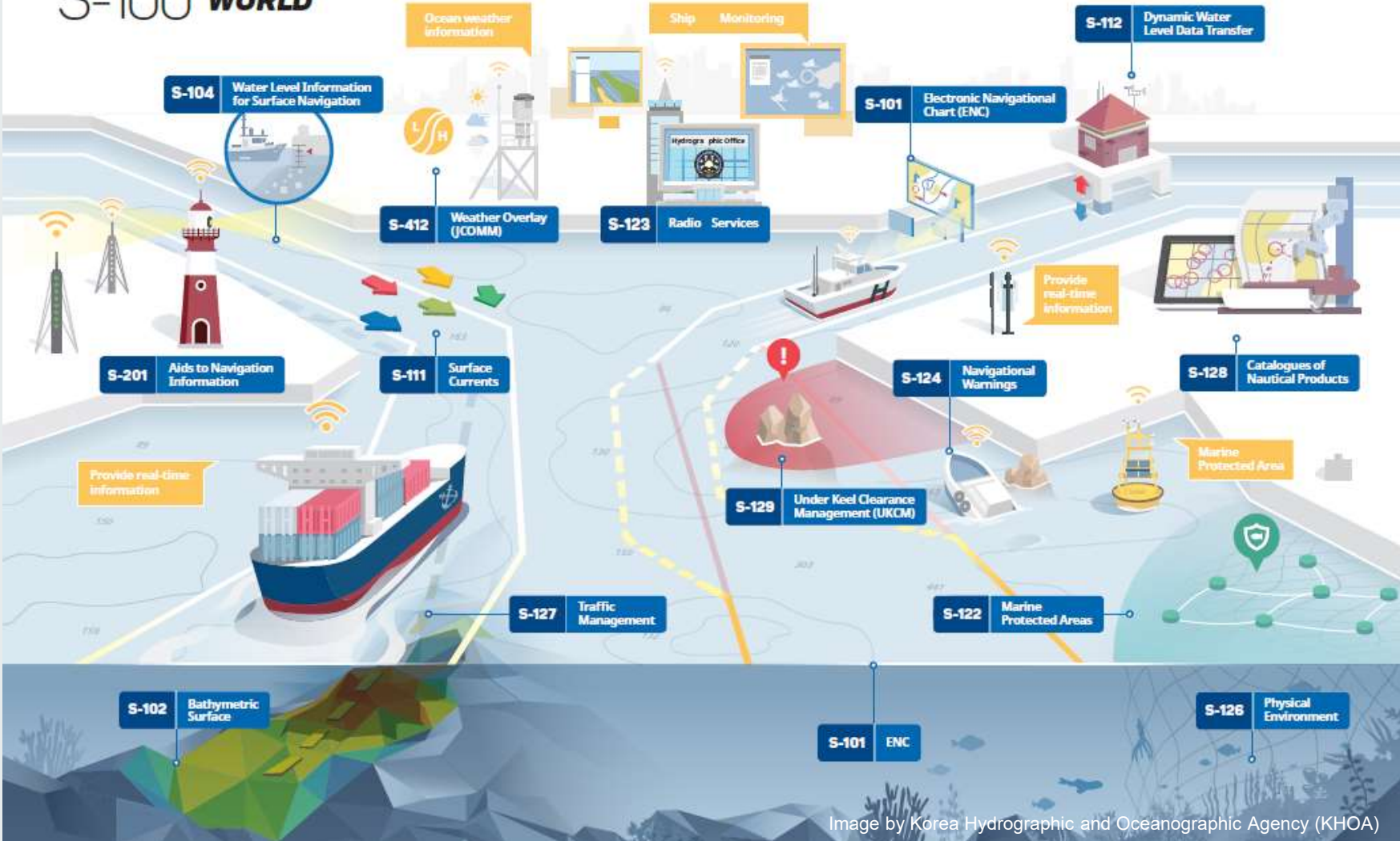
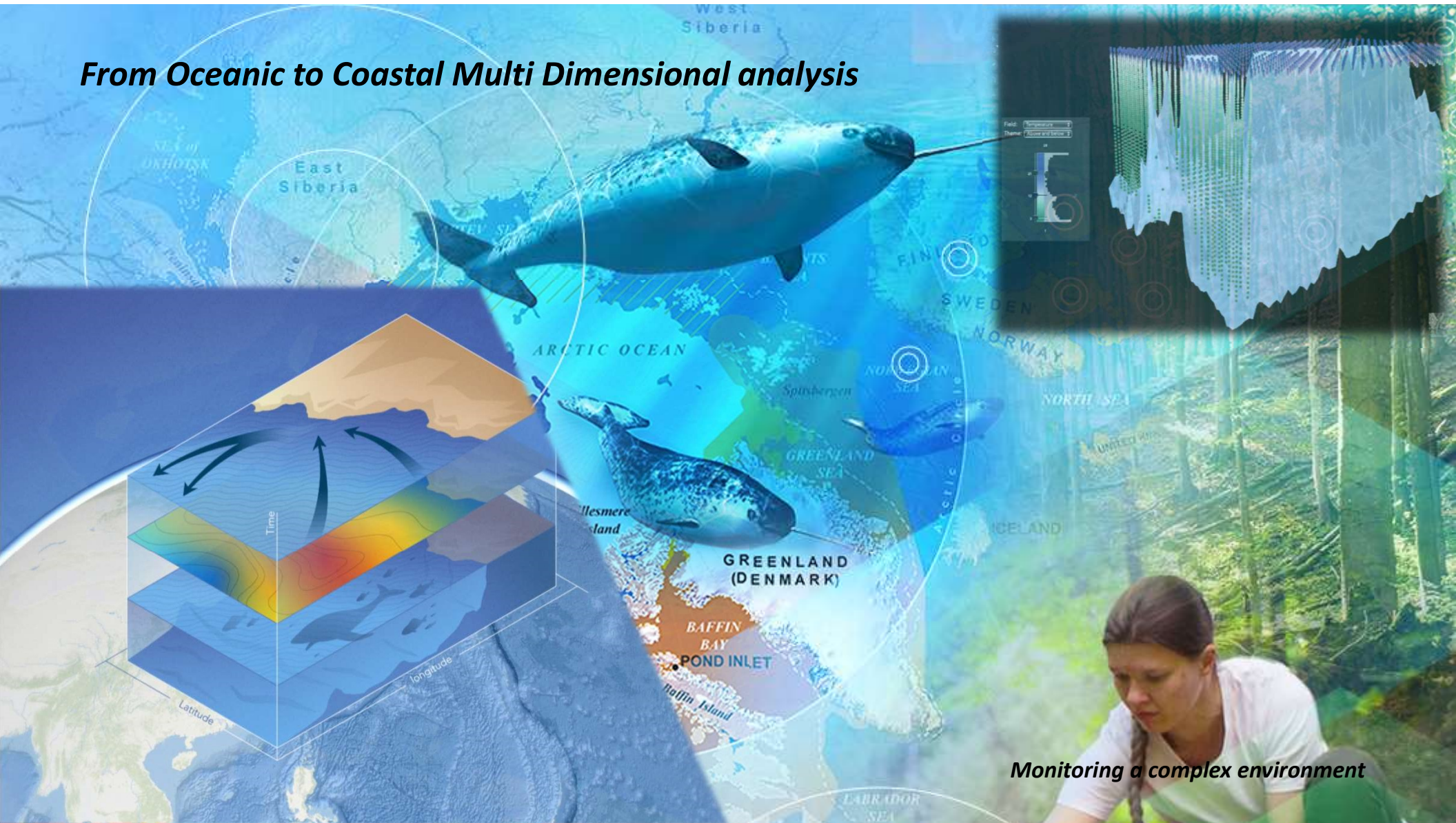


Image by Korea Hydrographic and Oceanographic Agency (KHOA)

From Shipping to Port Operations

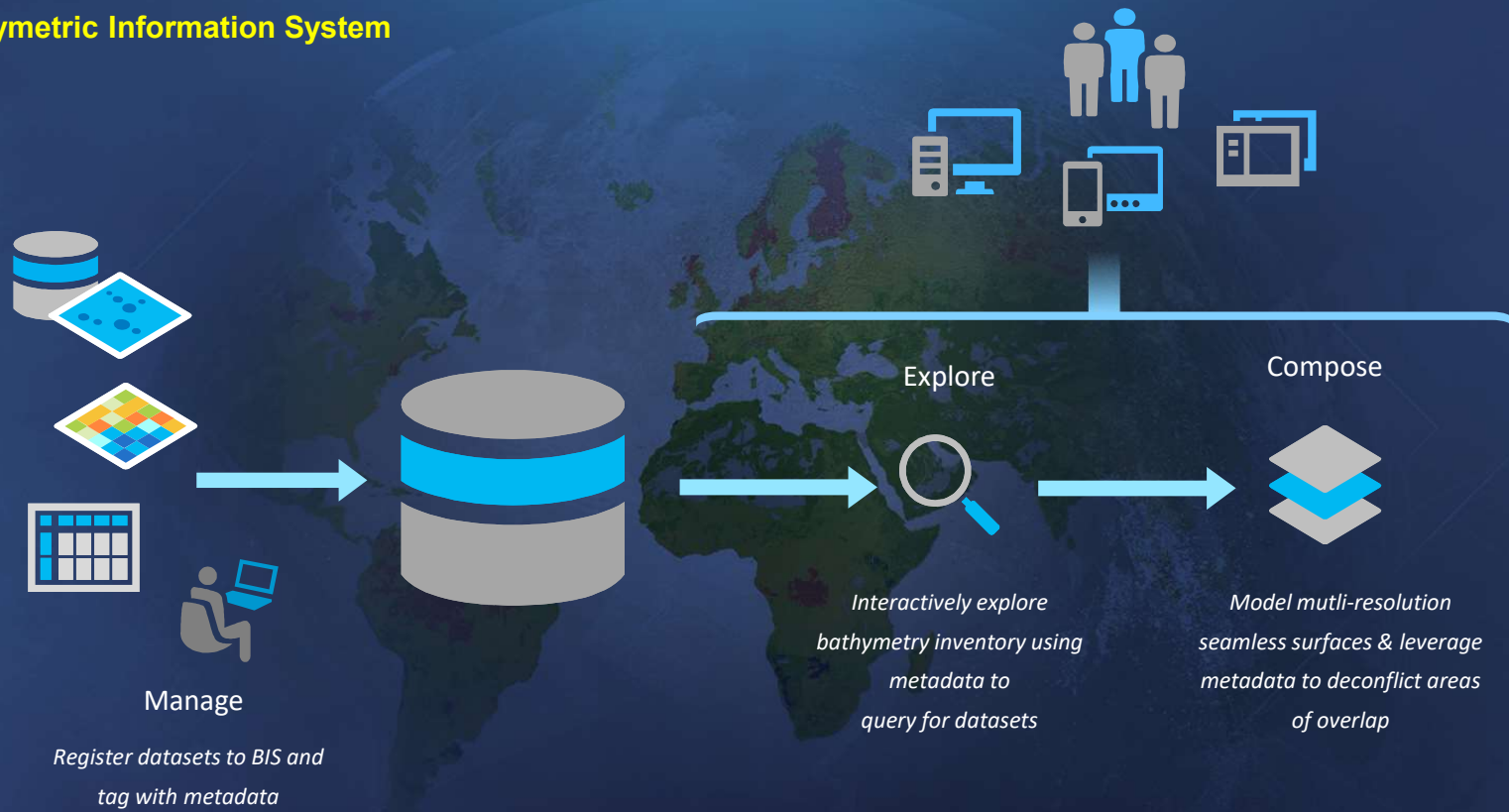


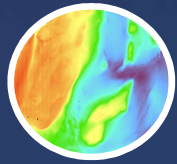
From Oceanic to Coastal Multi Dimensional analysis



Streamlining Traditional Processes

The Bathymetric Information System





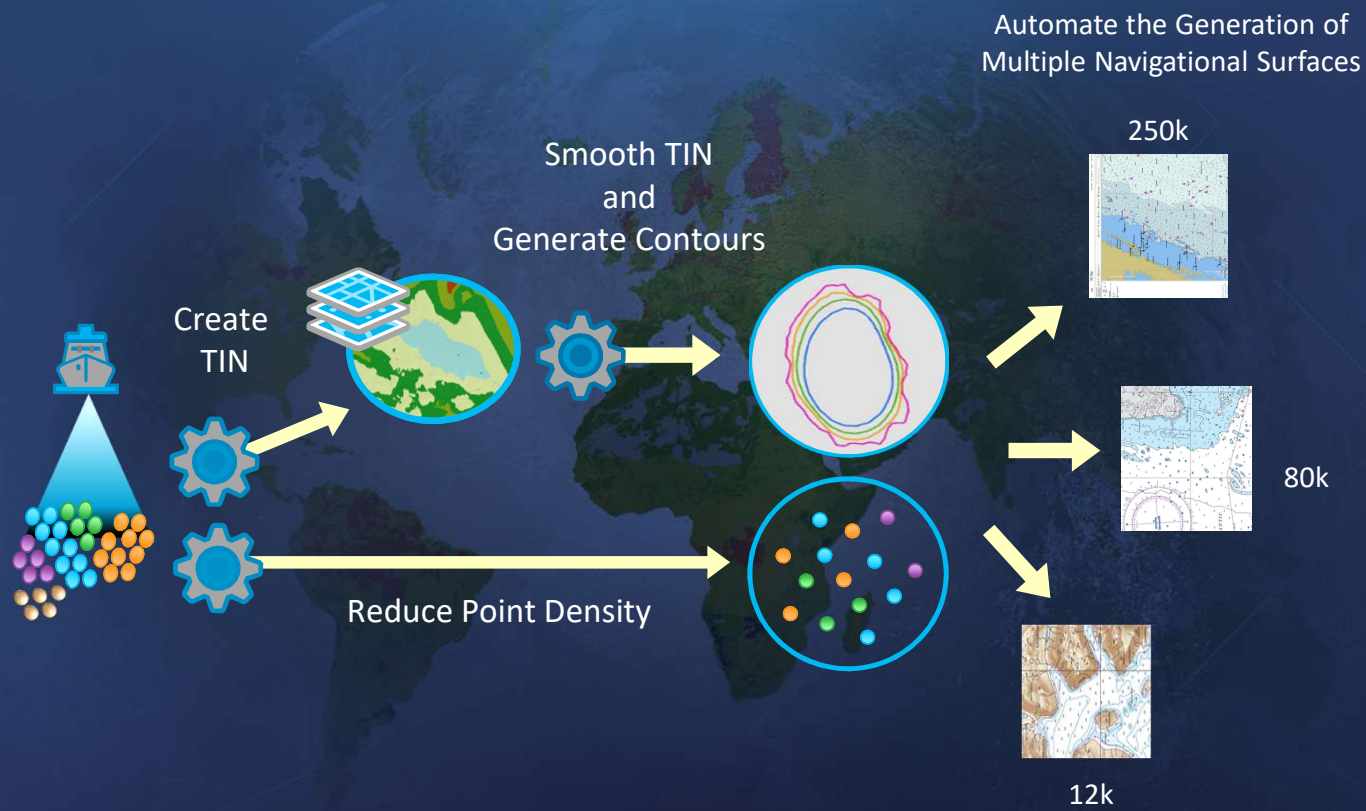
Bathymetry Image Service



OBJECTID	Name	BuDatasetId	BIS Dataset Type	Cell Size	Data Percentage	Vertical Units	Direction	BIS Models	Ext IHD Survey Order	Ext Sensor	Ext Vessel	Ext Data Type	Collection Name	Col C Status
1	H11421_fm_MLL (75293ADR-A54F-46CD-972D-D6AC1AE7CB18)		Gridded BAG	4	3	Meters	Positive Up		Special Order	Sensor 1	Vessel 1	Multibeam		
2	H11421_fm_MLL (84FED879-5466-407A-9000-000000000000)		Gridded BAG	6	73	Meters	Positive Up		Special Order	Sensor 1	Vessel 1	Multibeam		

And going beyond traditional...

Automated contours and sounding selection



Automated Data Validation (S-58)

export geodatabase to S-57

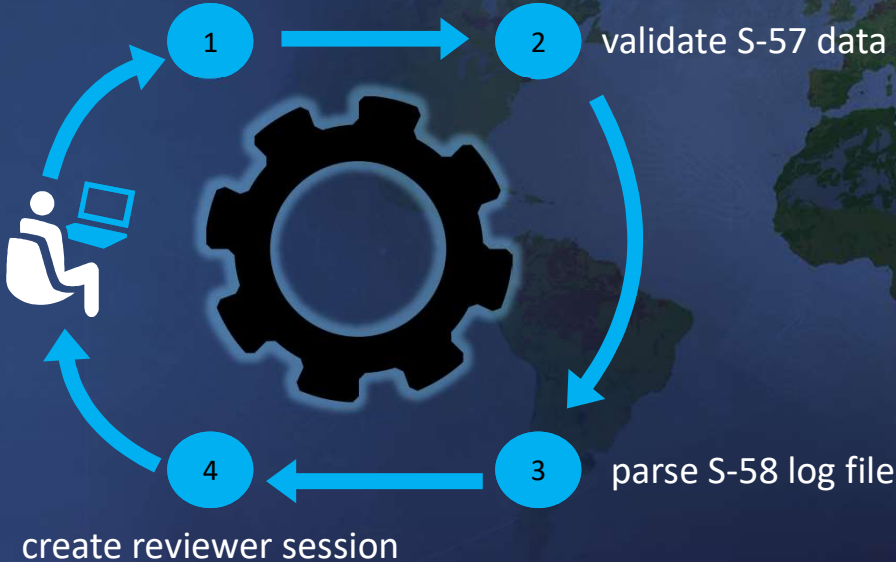
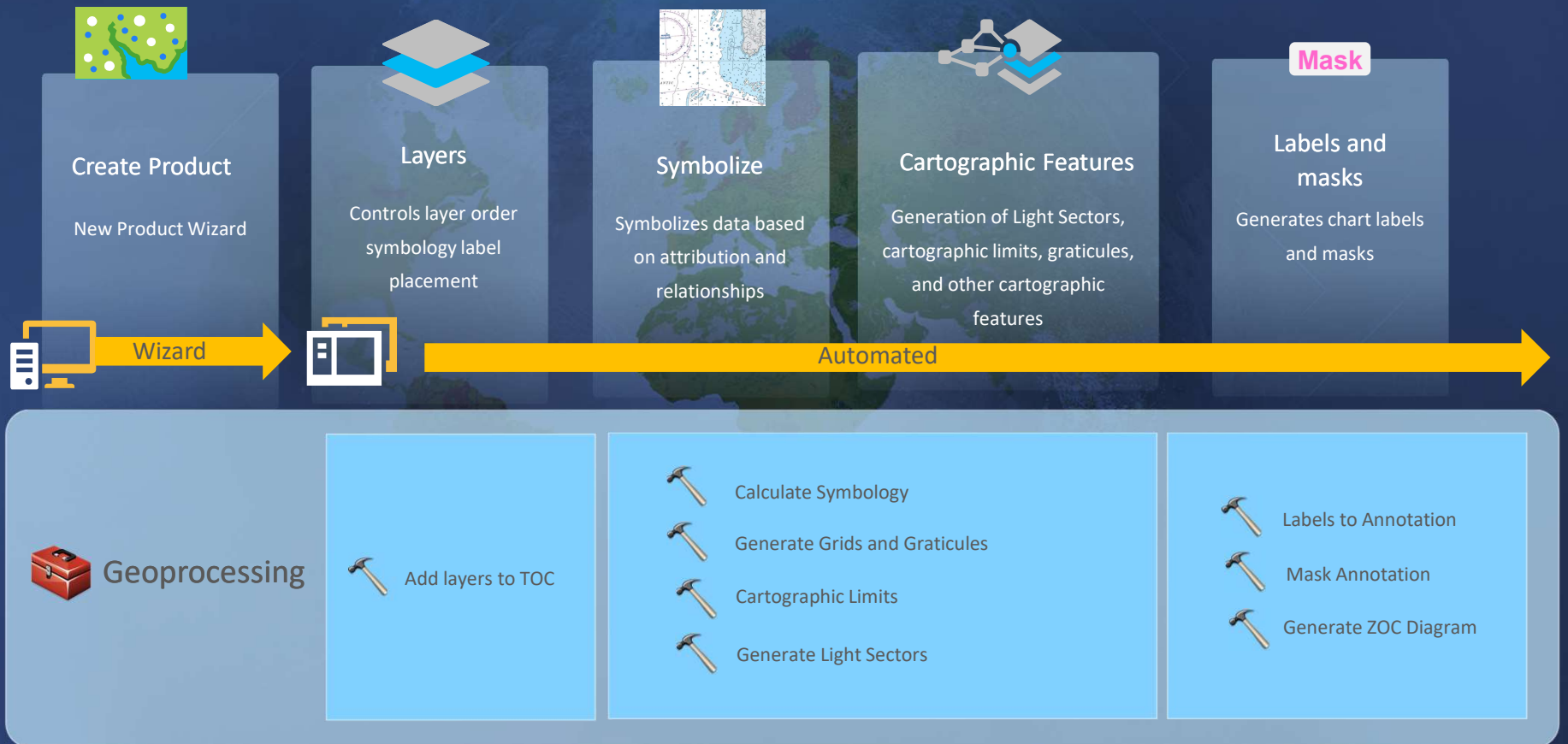


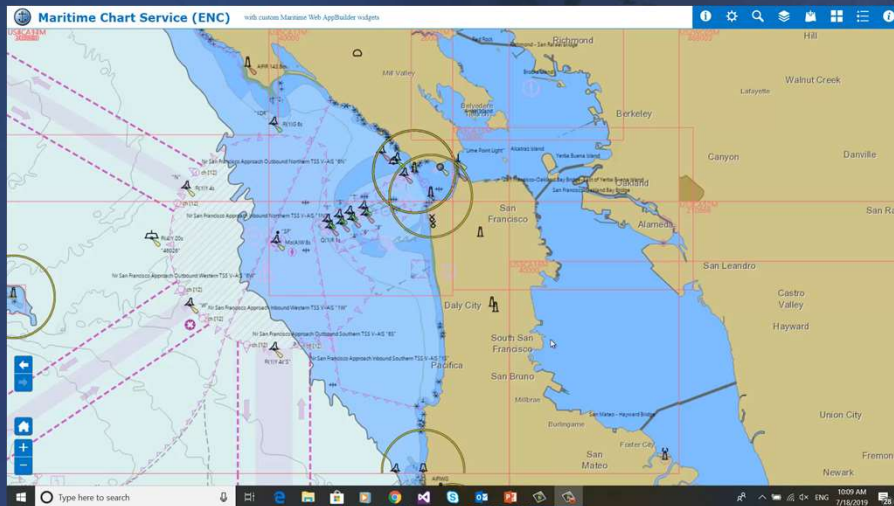
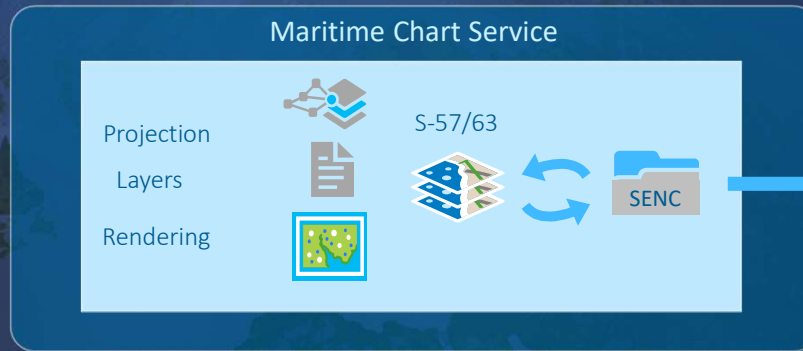
Chart automation





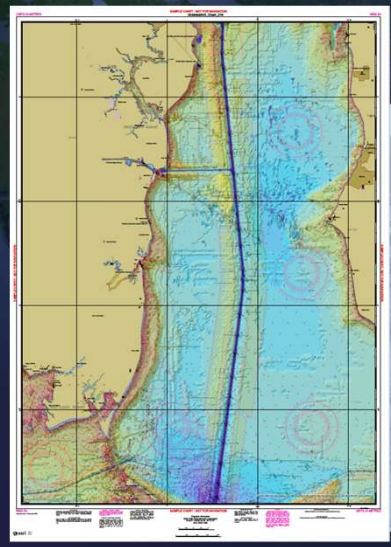
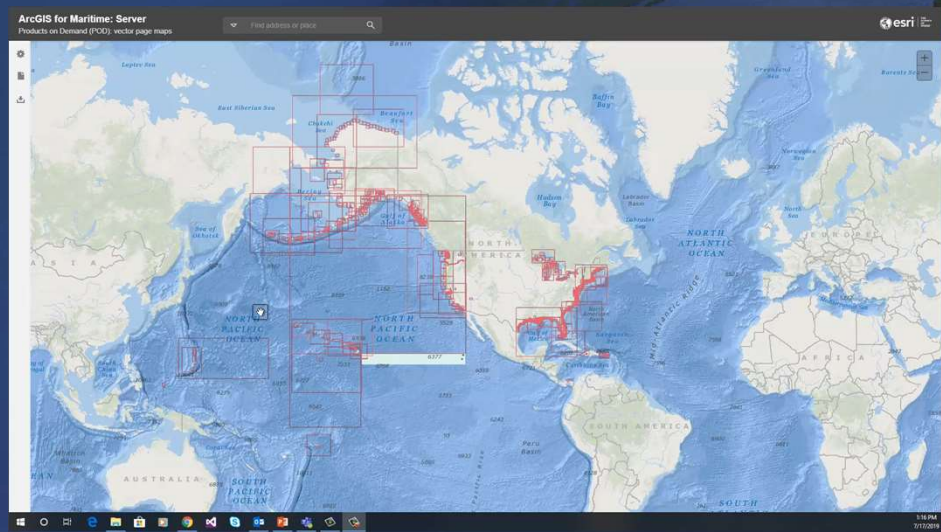
Maritime Chart Service

ArcGIS Server

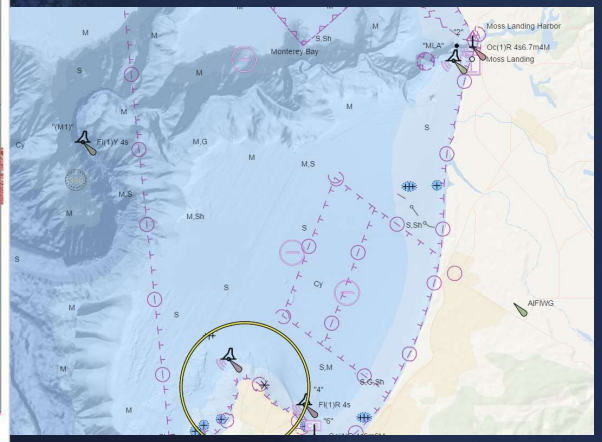




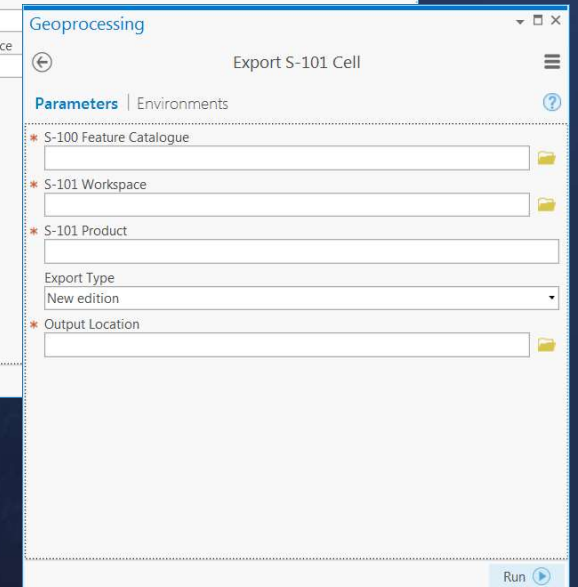
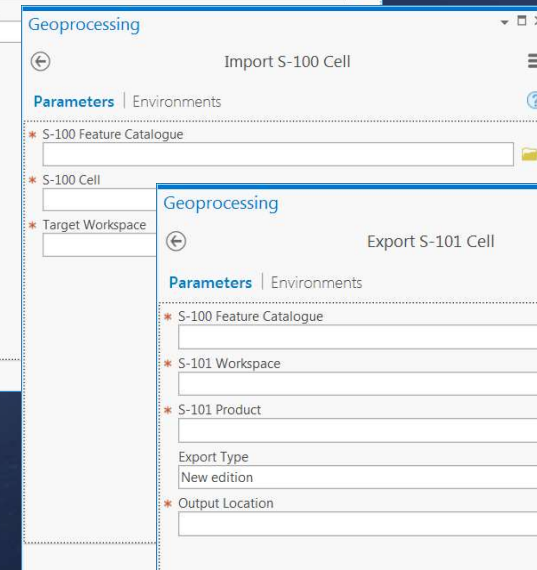
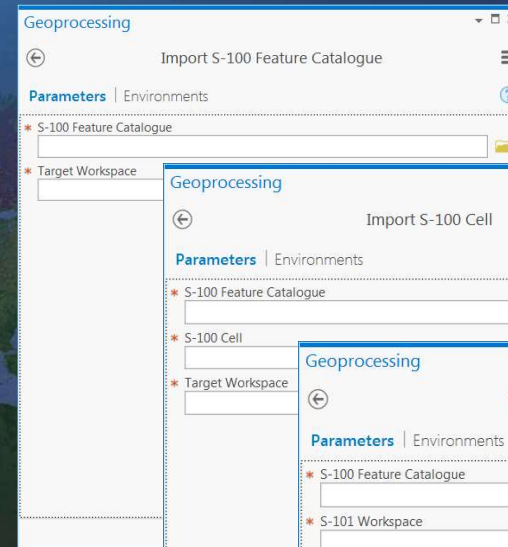
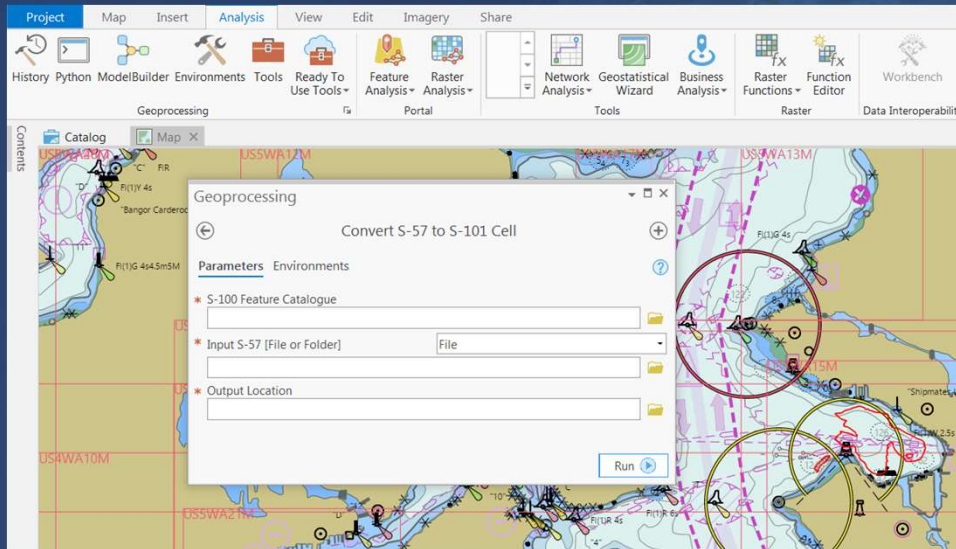
Products on Demand



Add Data for Mash-ups

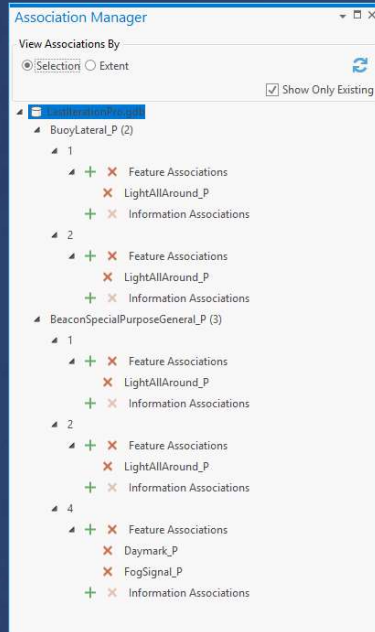


Automated S-100 Tools

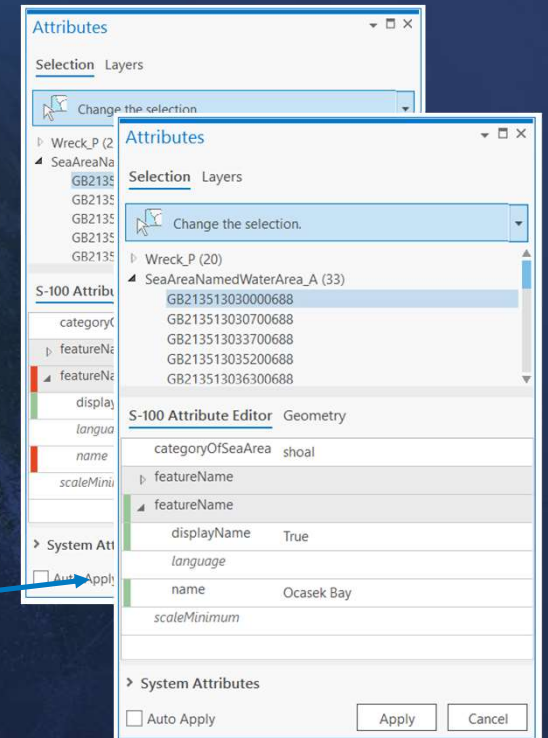
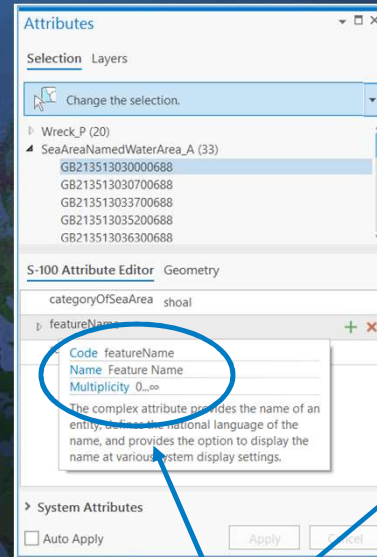


Enhanced S-100 editing tools

Association Manager

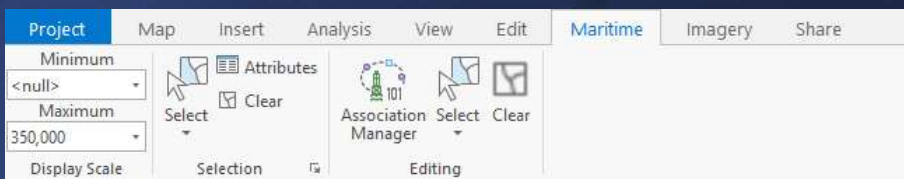


S-100 Attribute Editor



Feature Catalogue in runtime for tooltips and validation

Maritime ribbon



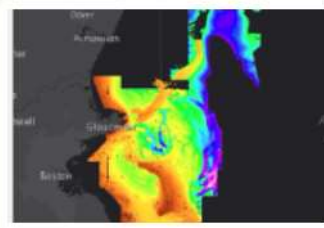
ArcGIS Online Maritime Product Support



Featured Maps and Apps



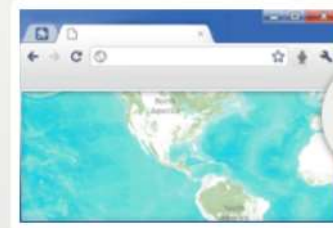
ArcGIS for Maritime Product Support



BIS Filter Demo



Data behind the search for MH370



Dredging Example

<http://esriho.maps.arcgis.com/home/index.html>

Last thought: a conversation with Sylvia Earl . . .

Building an Intelligent Nervous System Is More Than Just Technology

“We live in an age of knowledge; this is our superpower”

“Once you see, you can’t un-see”

“Ignorance is killing us”

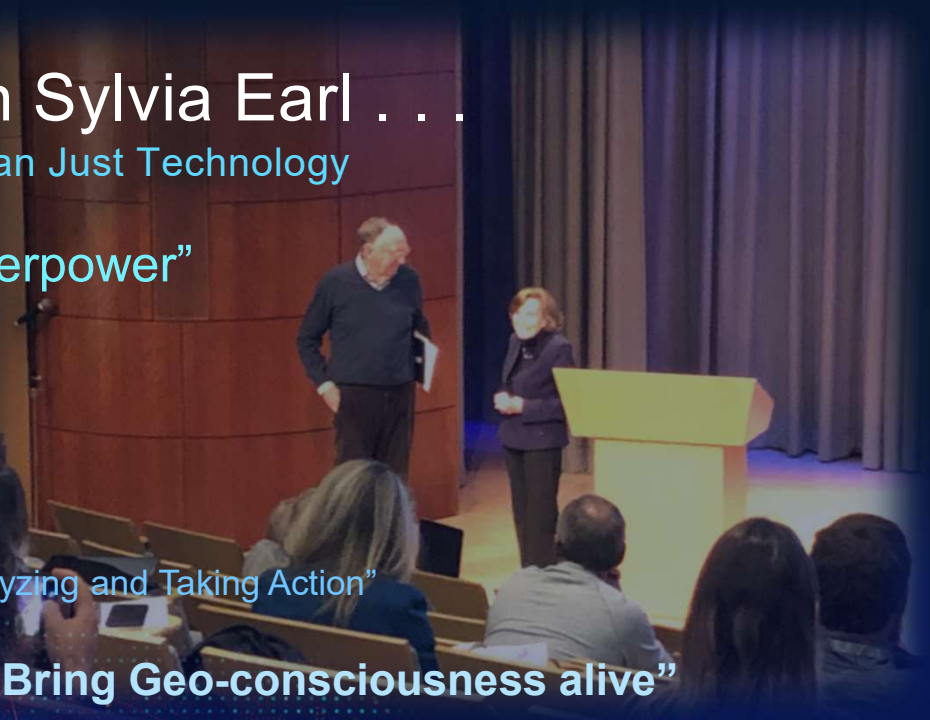
“Measuring, Analyzing and Taking Action”

“Bring Geo-consciousness alive”

“Making GIS the nervous system of the world”

Leveraging *The Science of Where* . . .
. . . To See What Others Can’t

Watch it in its entirety here <https://youtu.be/ivZzxlq6S8M>





SEE
WHAT
OTHERS
CAN'T

Thank you!

rponce@esri.com



esri

THE
SCIENCE
OF
WHERE