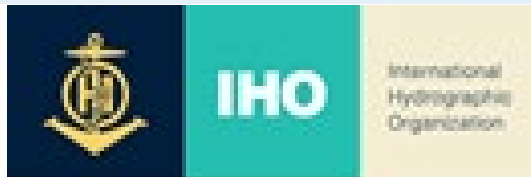


21th Meeting of the Meso America – Caribbean Sea Hydrographic Commission

National Report Belize C.A.

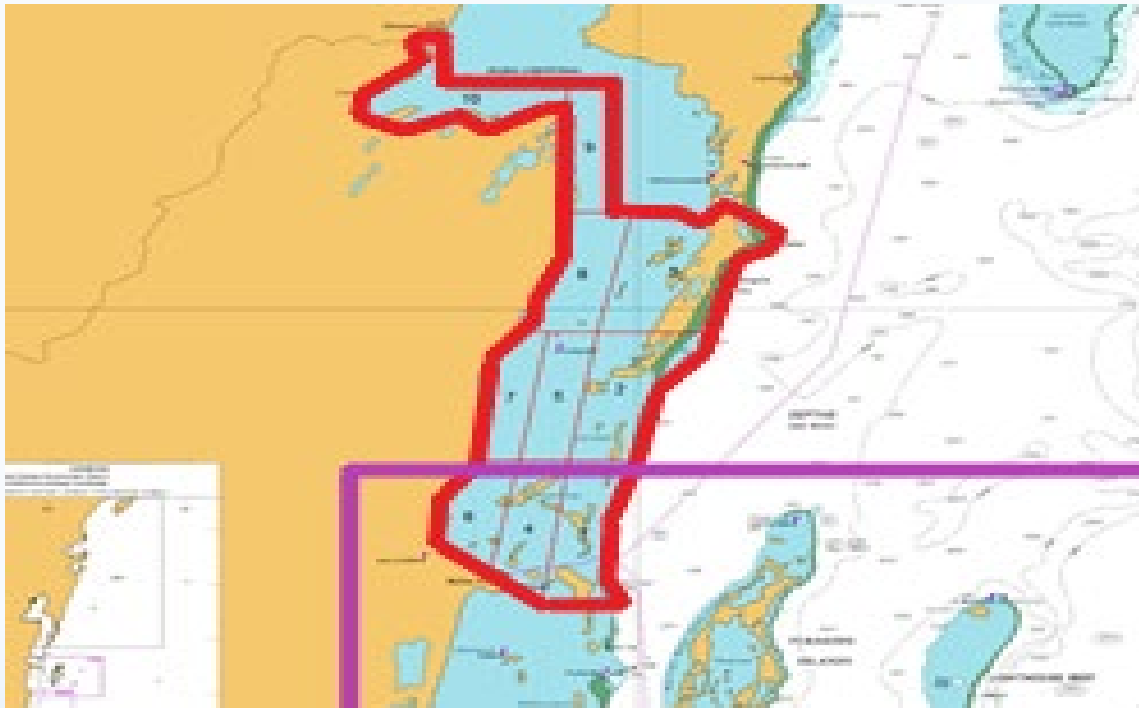
Presented by: Mr. Michael Jenkins, Safety and Security Manager Belize Port Authority



Achievements made in year 2020

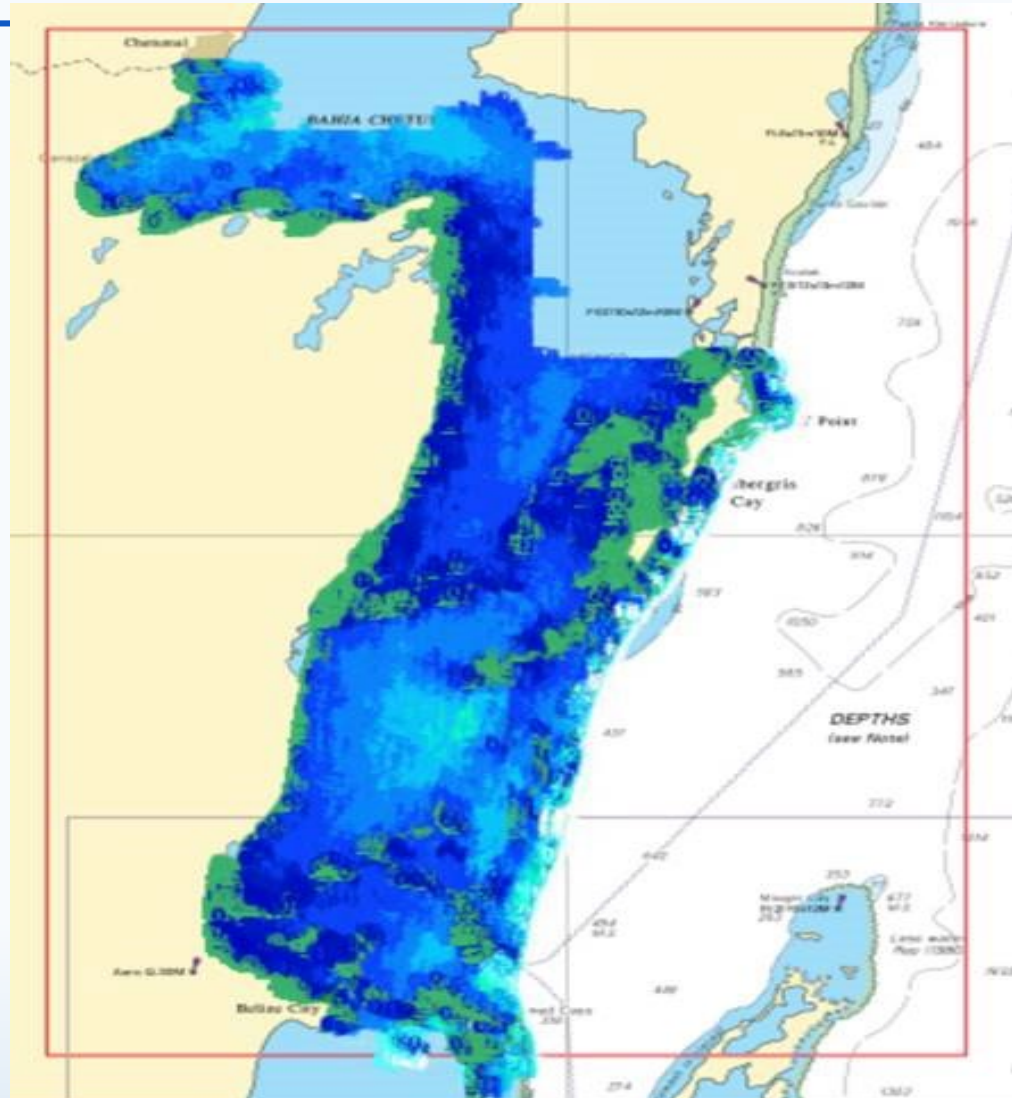


1. Through the CME program the country of Belize was able to conduct approximately 2575 Km² LIDAR survey in the northern internal waters of Belize.

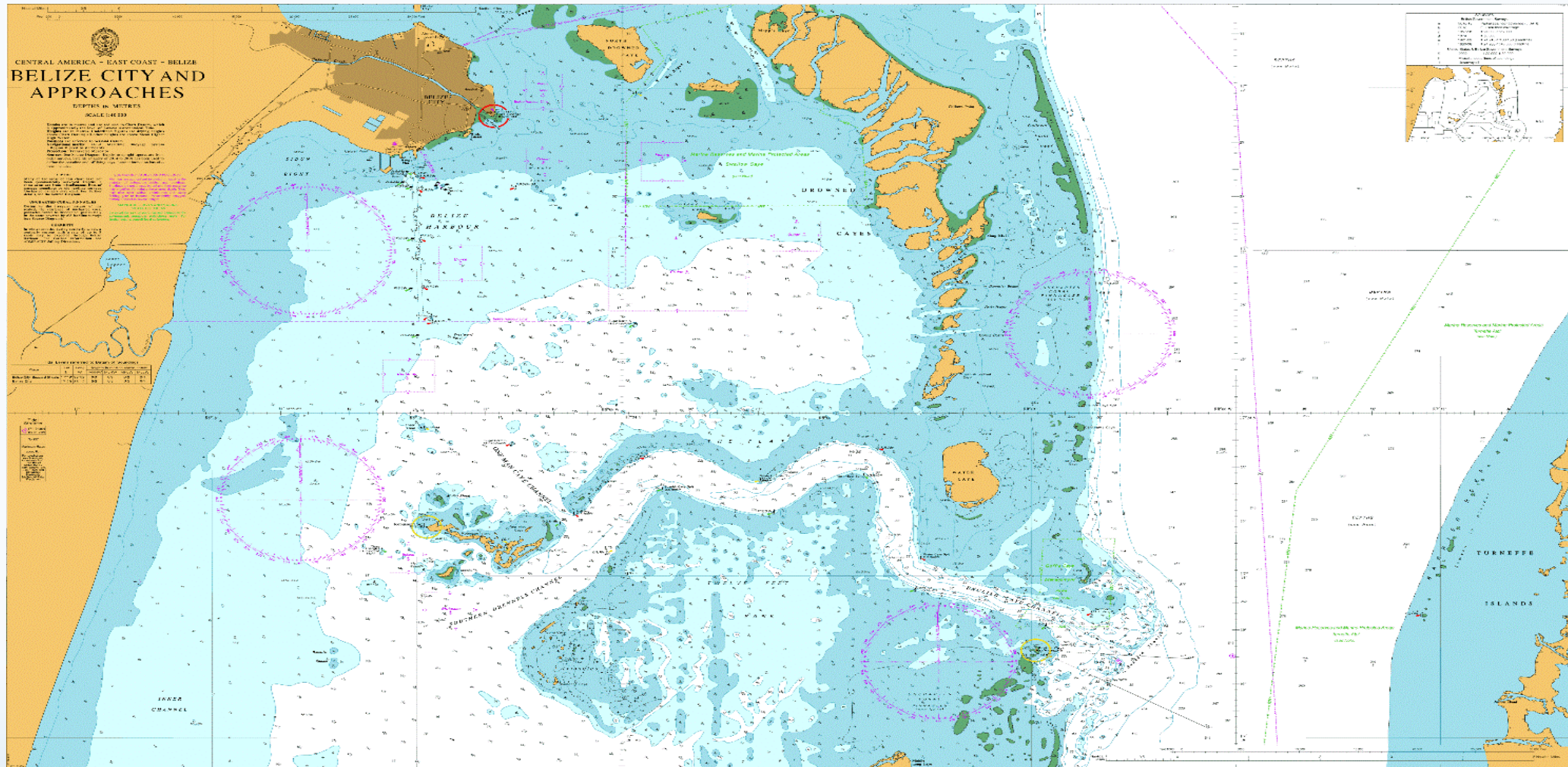


Through the CME program a Thematic Chart was the final product.

- The thematic Chart is titled Edition 1 Belize City to Chetumal and it provides depth information, Hol Chan marine reserves and protected areas, and areas of inadequate surveys derived from the airborne LIDAR.



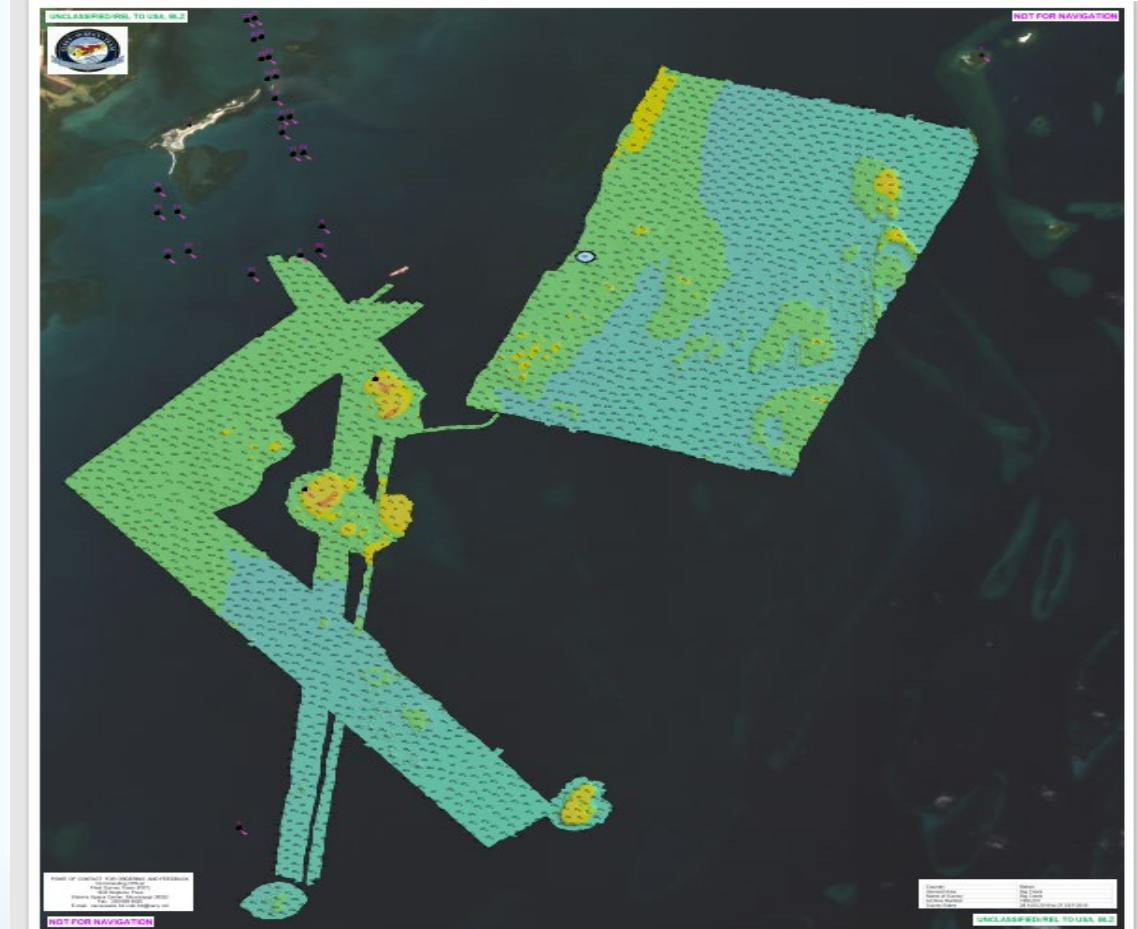
Data derived from the LIDAR survey also validated some chart correction on chart #522 Belize City and Approaches which is our busiest port of call.



International Hydrographic Organization
Organisation Hydrographique Internationale



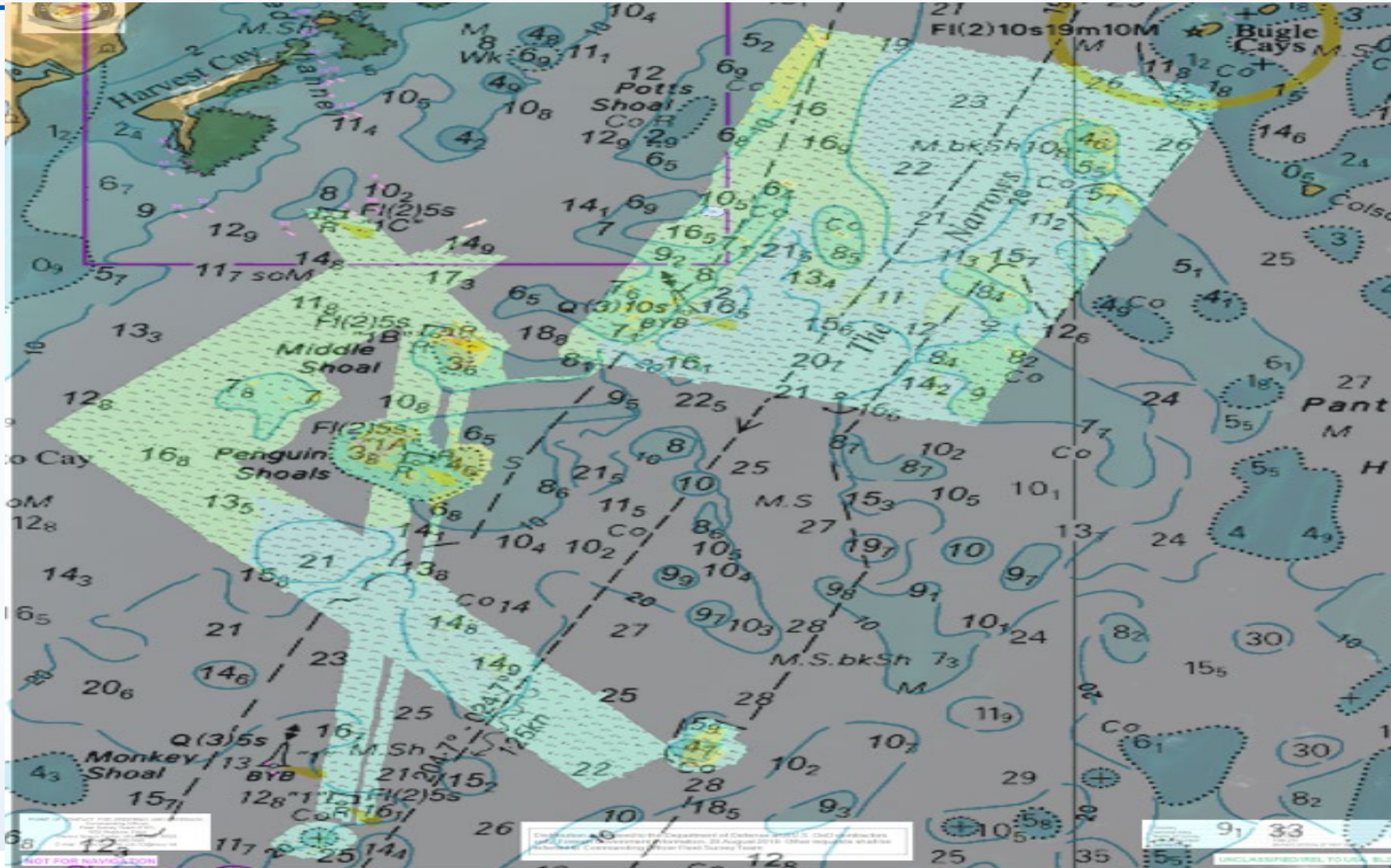
The US Navy Fleet Survey team conducted Multi beam surveys which commence on 28th Aug 2019 and completed 27 Sep 19. Areas covered was the Access Channel from the newly established pilot station to Harvest Caye and the Big Creek Port.



International Hydrographic Organization
Organisation Hydrographique Internationale



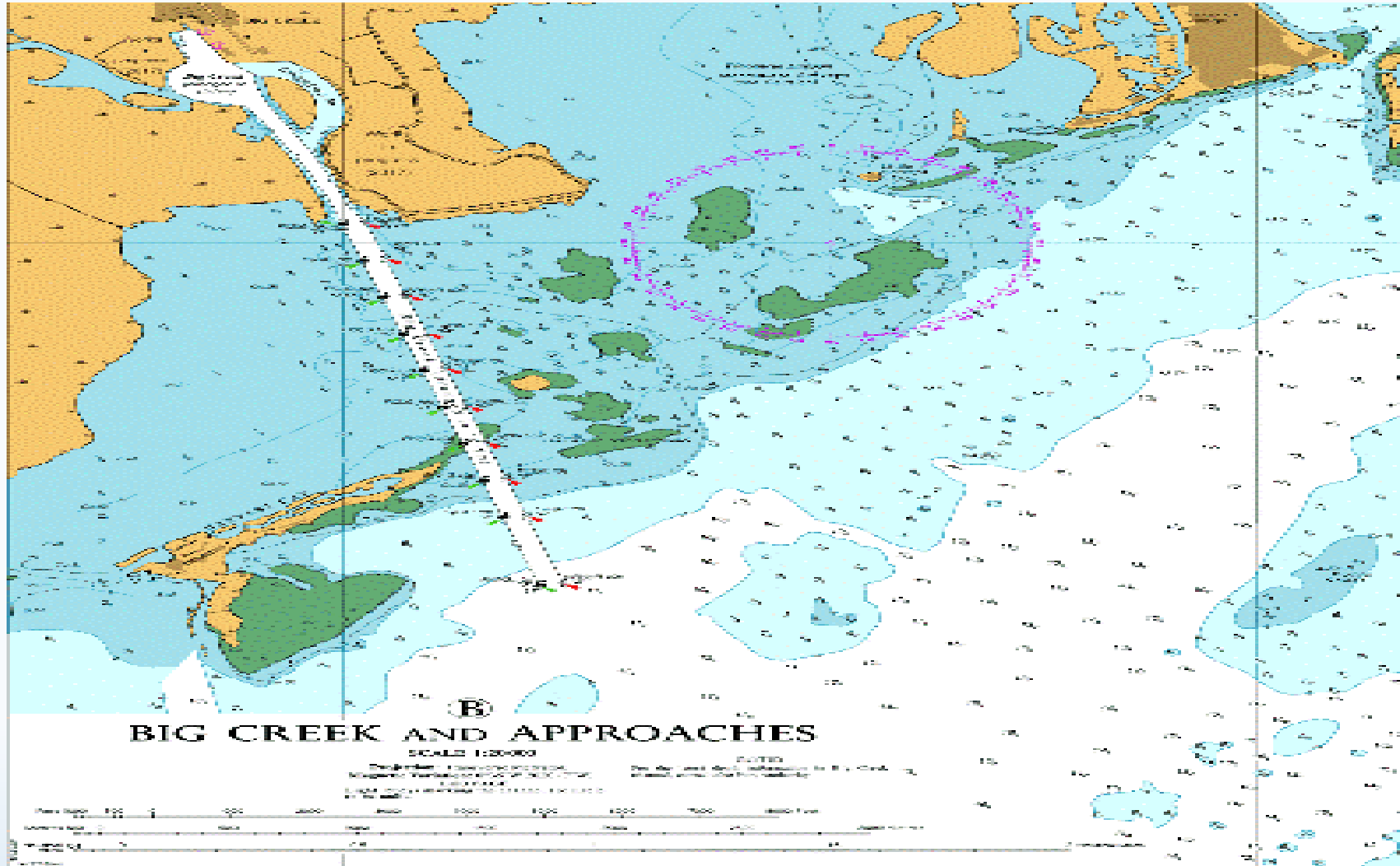
The US Survey data has been shared with UKHO for chart correction



International Hydrographic Organization
Organisation Hydrographique Internationale



New Chart update with future immediate updates to include Harvest Caye cruise port.



The Authority has able to refurbish one of our priority lighthouses cost \$45,000 usd.



International Hydrographic Organization
Organisation Hydrographique Internationale



The establishment of Belize National Spatial Data Infrastructure



Ministry of Natural Resources

H.M. Queen Elizabeth II Boulevard, Belmopan, Belize
Minutes of the Meeting of the 1st Marine Working Group Meeting for National Spatial
Data Infrastructure
Coastal Zone Management Authority Institute Training Room
February 18, 2020

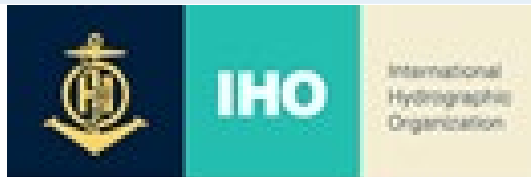
Members Present:

Alfred Cal	Ministry of Natural Resources
Vivian Ramnarace	Fisheries Department
Sgt. Lisani Ciego	Chief Engineer, BDF
Michael Jenkins	Belize Port Authority
Andrea Rosado	Coastal Zone Management Authority Institute
Stephan Alvarez	Belize Water Services Limited
Ervin Flores	Belize Water Services Limited
Tarique Marin	Belize Electricity Limited
Wuelmer Escobar	Ministry of National Security
Jonnelle Hemmans	Ministry of Tourism
Arlene Young	Coastal Zone Management Institute Authority
Victor Alegria	Sustainable Development Unit
Darlene Padron	Sustainable Development Unit

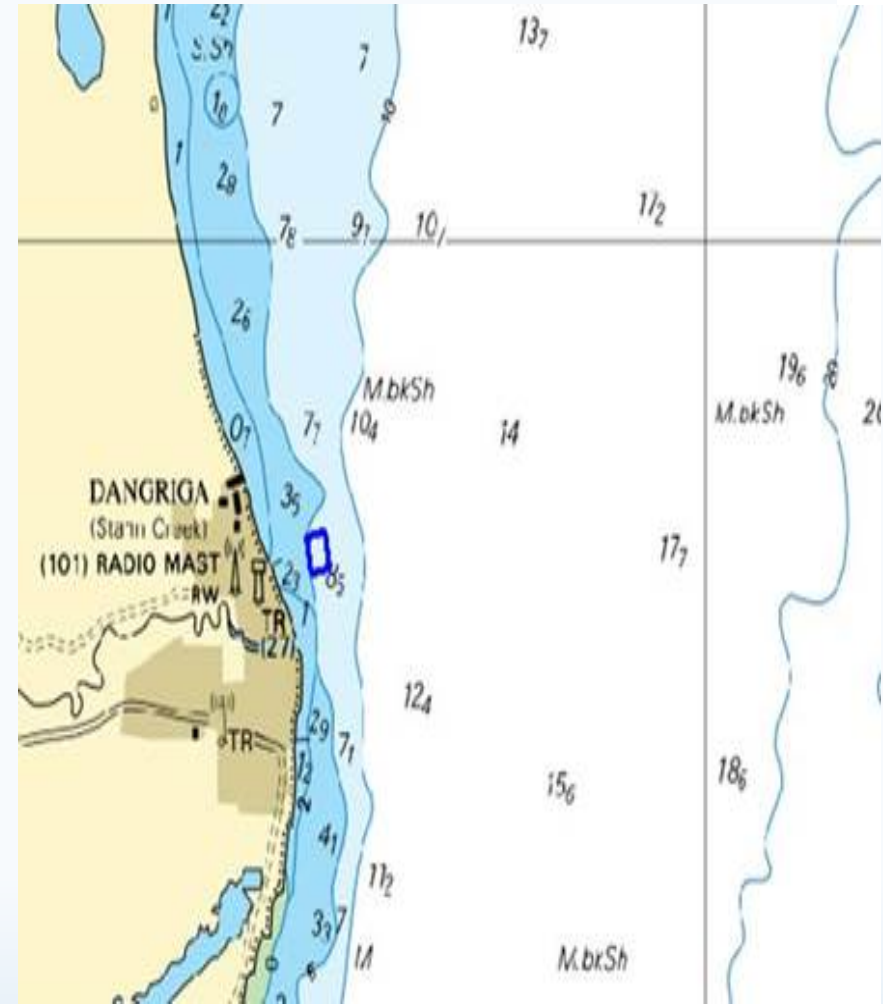
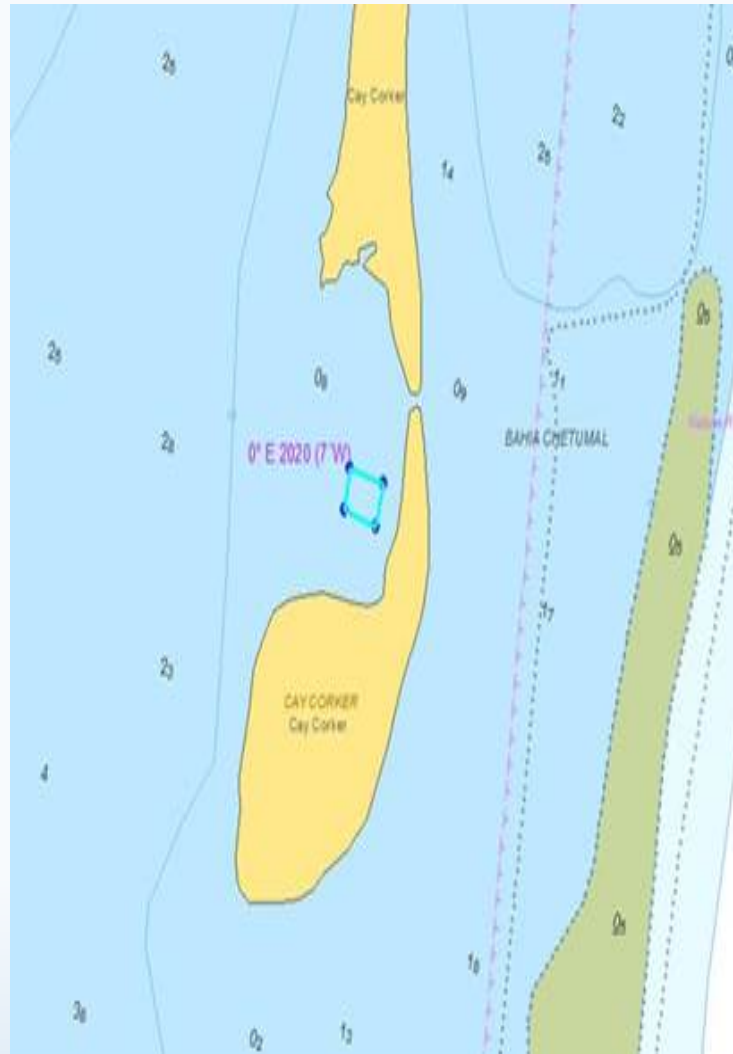
Challenges faced by the Belize Port Authority



1. The Belize Port Authority is very much aware of the importance of having accurate and current hydrographic survey information especially after a natural disaster has occurred. It is still a challenge to receive survey data collected by private developers even with conditions stipulated. The only way we can conduct and receive timely information is for the Port Authority team be able to carry out our own bathymetric surveys. To do this new survey equipment is needed with advancement with multibeam surveys.
2. There are several areas in our territorial waters that does not have any updated hydrographic coverage. This is of great concern since our waters are becoming increasing congested with private pleasure craft the numerous water taxi service and the commercial vessels transiting the islands and neighboring country of Chetumal Mexico and Barrios Guatemala. Areas of Queens Caye and Gladden Split is heavily trafficked by both local and foreign vessel.
3. The Belize Port Authority continues to have significant challenges in covering 100% VHF radio communication within Sea Area 1. This is directly caused by the territorial baseline that extends out 54 miles and hence extends our responsibilities out to some 74 miles from shore side base radio.



Year 2020 has been one of unforeseen challenges for enforcement/Port State Control. COVID 19 allowed for new anchorage areas identified for vessel isolation and clearance into Belize



Top Plans that affect the region through 5 C's



- The Caribbean Community Climate Change Center which is located in the capital city Belmopan, Belize is responsible to address impacts of climate variability and its change on all aspects of economic development.
- Over the past year 5c's has procured a LIDAR system, the Riegl VQ-880-G which is topo-hydrographic required training is use and care and delayed data collections. Many of the issues of this new system has been corrected and at present the LIDAR system is in Austria doing upgrade to its lenses.
- The Caribbean LIDAR Project which is schedule to start in February 2021 will see 12 countries in the region benefiting from LIDAR surveys. These surveys will be funded by the Caribbean Development Bank and will focus on priority areas in the selected areas.

Top 2 recommendations for MACHC plenary



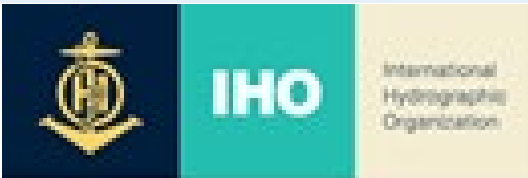
(Criteria: Greatest collective regional impact, return on investment, potential for leveraging resources/partnerships)

1. What is your greatest capacity building priority to recommend for IHO CB funding consideration (Phase 1)? (Select one)

a) *High-level visit (political awareness and buy in into the importance of having hydrographic survey capabilities).*

2. What is your greatest capacity building priority (Phase 2 or Phase 3) for which to seek other partnership/funding opportunities *outside* of IHO CB?

The Belize Port Authority greatest capacity building priority is to receive training in Category A and Category B Hydrographic studies and to be able to acquire a multibeam hydrographic suite of equipment.





The End

Thank You for your attention!

