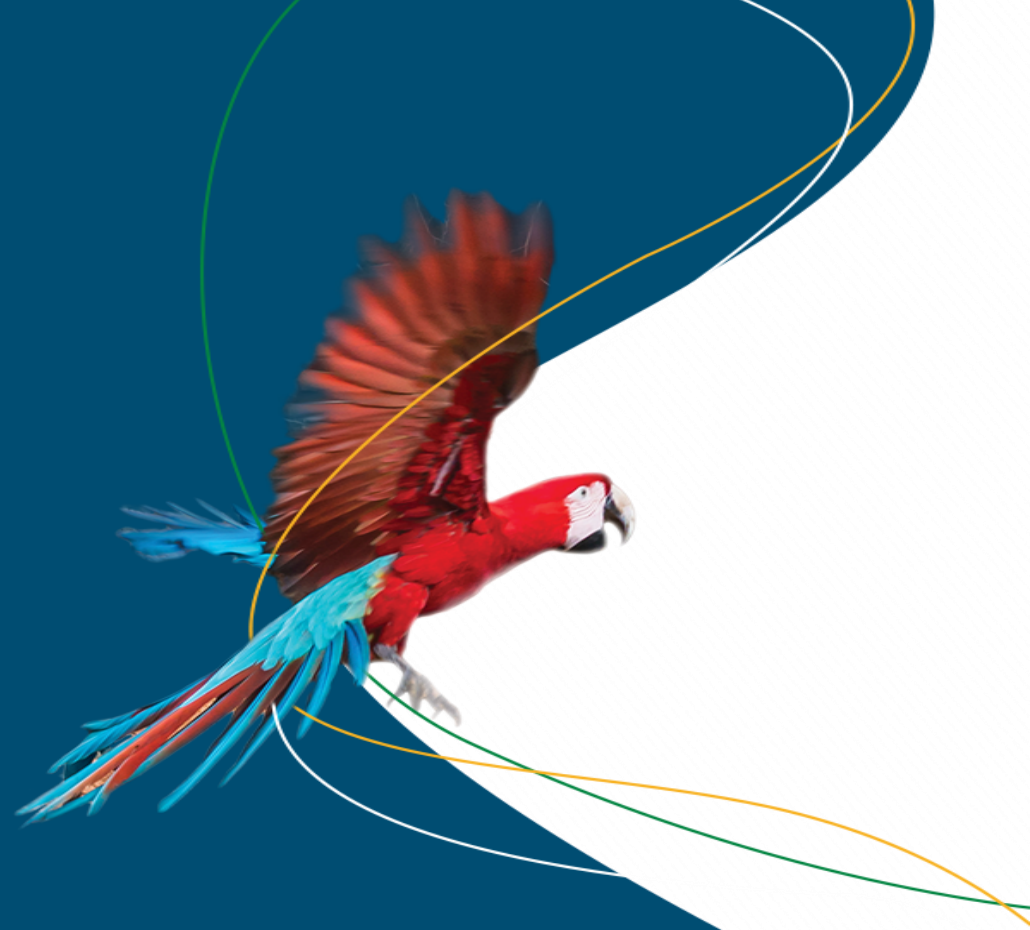


The Caribbean Regional Track of the Pilot Program for Climate Resilience (PPCR) Programme

Gerard Alleng
Climate Change Senior Specialist
(gerarda@iadb.org)

December 2020



Inter-American Development Bank
Climate Change and Sustainable Development Sector
Climate Change Division



The Inter-American Development Bank

OFFICES

IDB Headquarters - Washington, DC, USA	Brazil – Brasília	Guatemala - Guatemala City	Panamá - Panamá City
Country Offices	Chile – Santiago	Guyana – Georgetown	Paraguay - Asunción
Argentina – Buenos Aires	Colombia - Bogotá	Haiti – Port au Prince	Perú – Lima
The Bahamas – Nassau	Costa Rica - San José	Honduras – Tegucigalpa	Suriname - Paramaribo
Barbados – Christ Church	República Dominicana - Santo Domingo	Jamaica – Kingston	Trinidad and Tobago – Port of Spain
Belize – Belize City	Ecuador - Quito	Mexico – Mexico City	Uruguay - Montevideo
Bolivia – La Paz	El Salvador - San Salvador	Nicaragua – Managua	Venezuela – Caracas

Caribbean Pilot Program for Climate Resilience (PPCR) through the

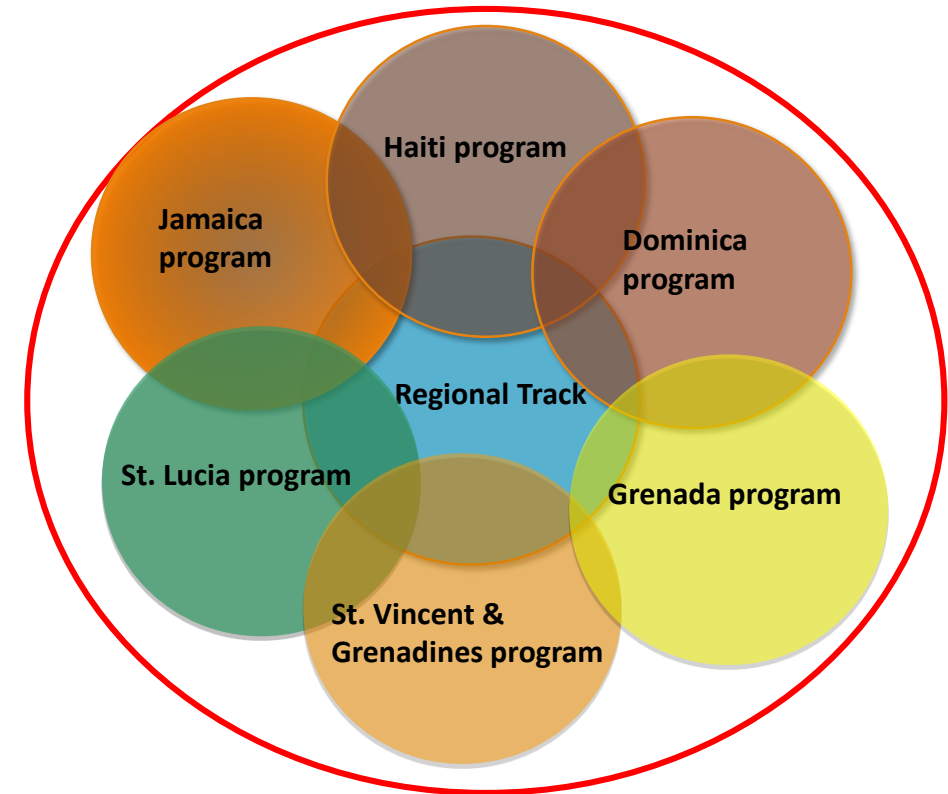


❖ Regional Program for the Caribbean

❖ Climate financing for investment in scaling up adaptation measures

❖ Activities proceeding along two tracks:

1. Country-led projects in six vulnerable countries: Haiti, Jamaica, Dominica, St. Lucia, St. Vincent and the Grenadines and Grenada.
2. Regional Track -wide activities involving regional organizations (US\$10 million in grant)



PPCR Caribbean Regional Track (2015)

Objective	To improve regional processes of data acquisition, storage, analysis, access and dissemination to enable effective response to climate change; and to pilot and scale up innovative climate resilience initiatives
COMPONENTS	DESCRIPTION
COMPONENT 1	Improving Geospatial Data Management and Management for Adaptation Planning, Sea Level Rise and Storm Surge Impact Analysis
Component 2	Consolidating and Expanding the Regional Climate Network and Global Platform Linkages
Component 3	Downscaling and Expanded Climate Projection Models and High-resolution Maps
Component 4	Applied Adaptation Initiatives – health, marine, water, agriculture

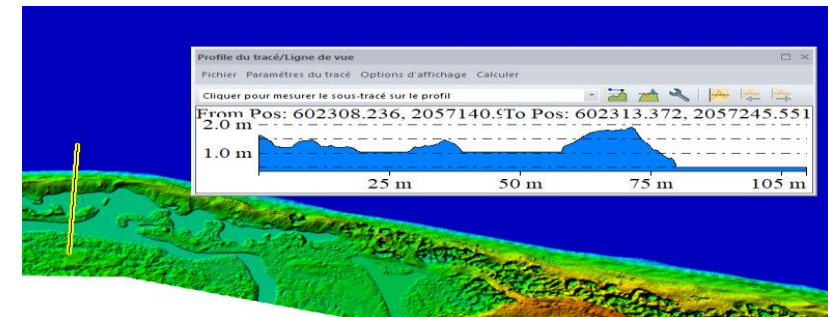
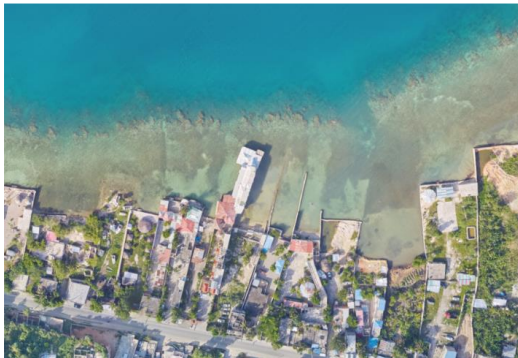
COMPONENT 1 – Improving Geospatial Data Management and Management for Adaptation Planning, Sea Level Rise and Storm Surge Impact Analysis

Activities:

1. Undertake bathymetric and near-shore topographic surveys for selected highly vulnerable locations in PPCR countries (Haiti and Jamaica)
2. Processing of the data to create geospatial outputs
3. Production and transfer of geospatial outputs to key national and regional repositories to support their ongoing climate analysis and adaptation planning
4. Development and dissemination of case studies

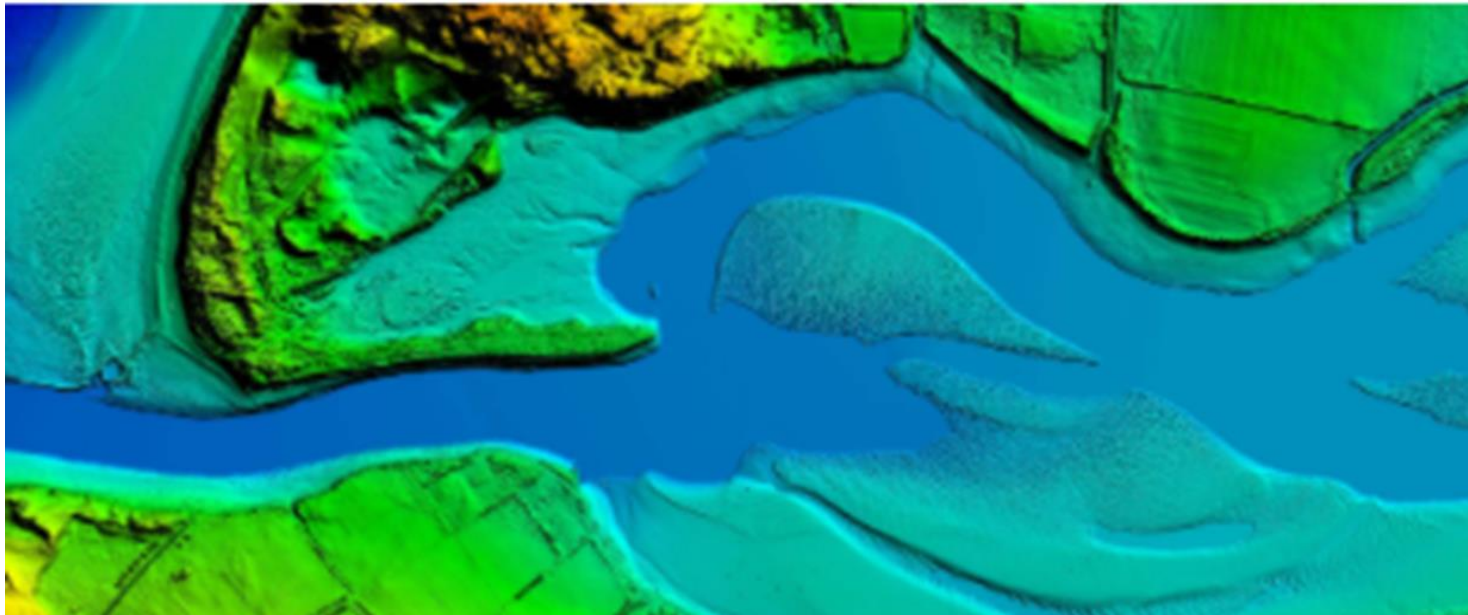
Current Status

- ? Data collected for 6 sites: Jamaica and Haiti
- ? Webinar on LIDAR results for Haiti (**September**); Jamaica (**November 30**)
- ? A system for accessing the data (in process): To be stored at CIMH/CCCC and nationally
- ? 6 High Res Maps – Being Processed (Nov)
- ? 6 DTM – Being Processed (Nov)
- ? 6 Land Use Scenarios – In procurement
- ? 18 People trained in LIDAR tech & products – In procurement
- ? Lessons learned report – TBD



Present and future engagements with countries

- **Strengthening climate resilience** – adaptation plans, sustainable coastal infrastructure
 - **Blue Economy** – roadmaps being developed (e.g. The Bahamas, Barbados), incl. marine spatial plans (e.g. Tobago, Barbados)
-





Let's talk about climate change



@BIDcambioclima | <http://blogs.iadb.org/climatechange>