



# CDEMA Overview

Presented by  
Elizabeth Riley  
Executive Director (ag), CDEMA  
MACHC21  
December 3, 2020



# **PRESENTATION OVERVIEW**

- ❖ **CDEMA**
- ❖ **Hazards Landscape & Impacts**
- ❖ **Comprehensive Disaster Management & Resilience Framework**
- ❖ **Regional Response Mechanism**
- ❖ **Considerations going forward**



**Mobilizing and  
coordinating disaster  
relief**

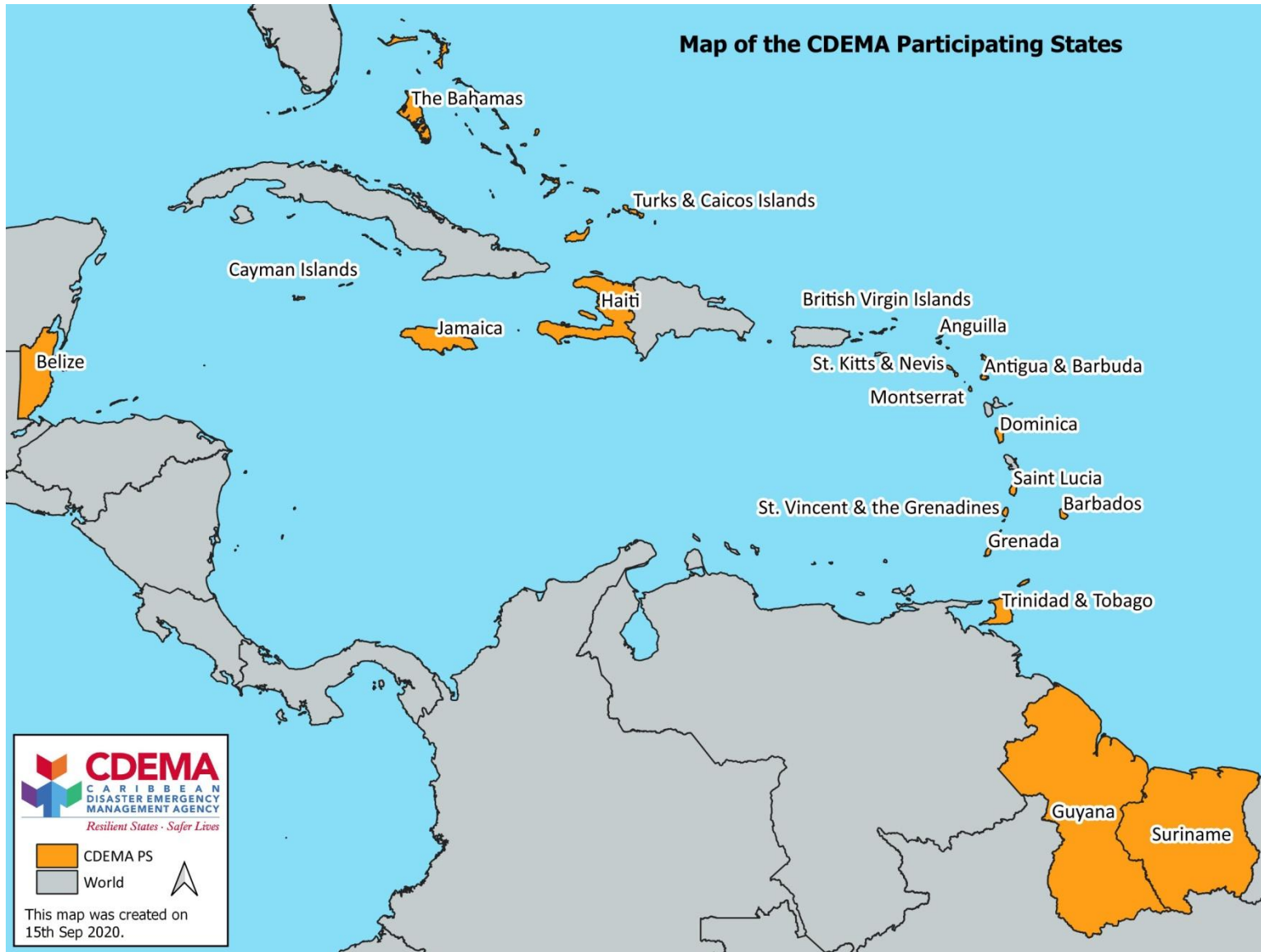
**Mitigating consequences  
of disasters**

**Providing  
comprehensive  
information on  
disasters**

**Encouraging disaster loss  
reduction and cooperative  
arrangements and  
mechanisms**

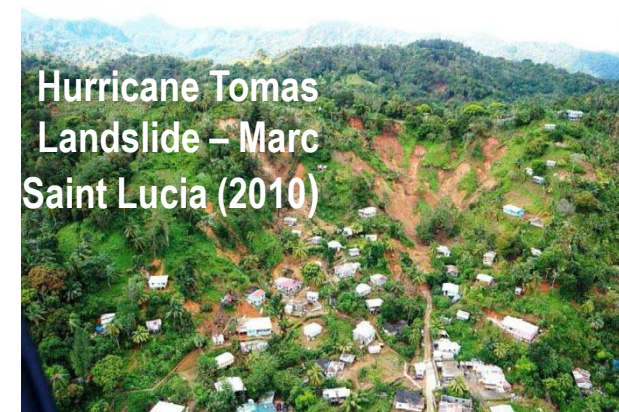
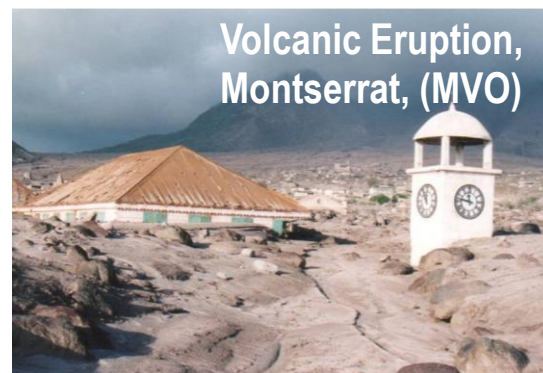
**Establishment  
enhancement and  
maintenance of adequate  
emergency disaster  
response capabilities  
among the Participating  
States**

# CDEMA'S 19 PARTICIPATING STATES





# DIVERSE HAZARDS



# A CHANGING CLIMATE

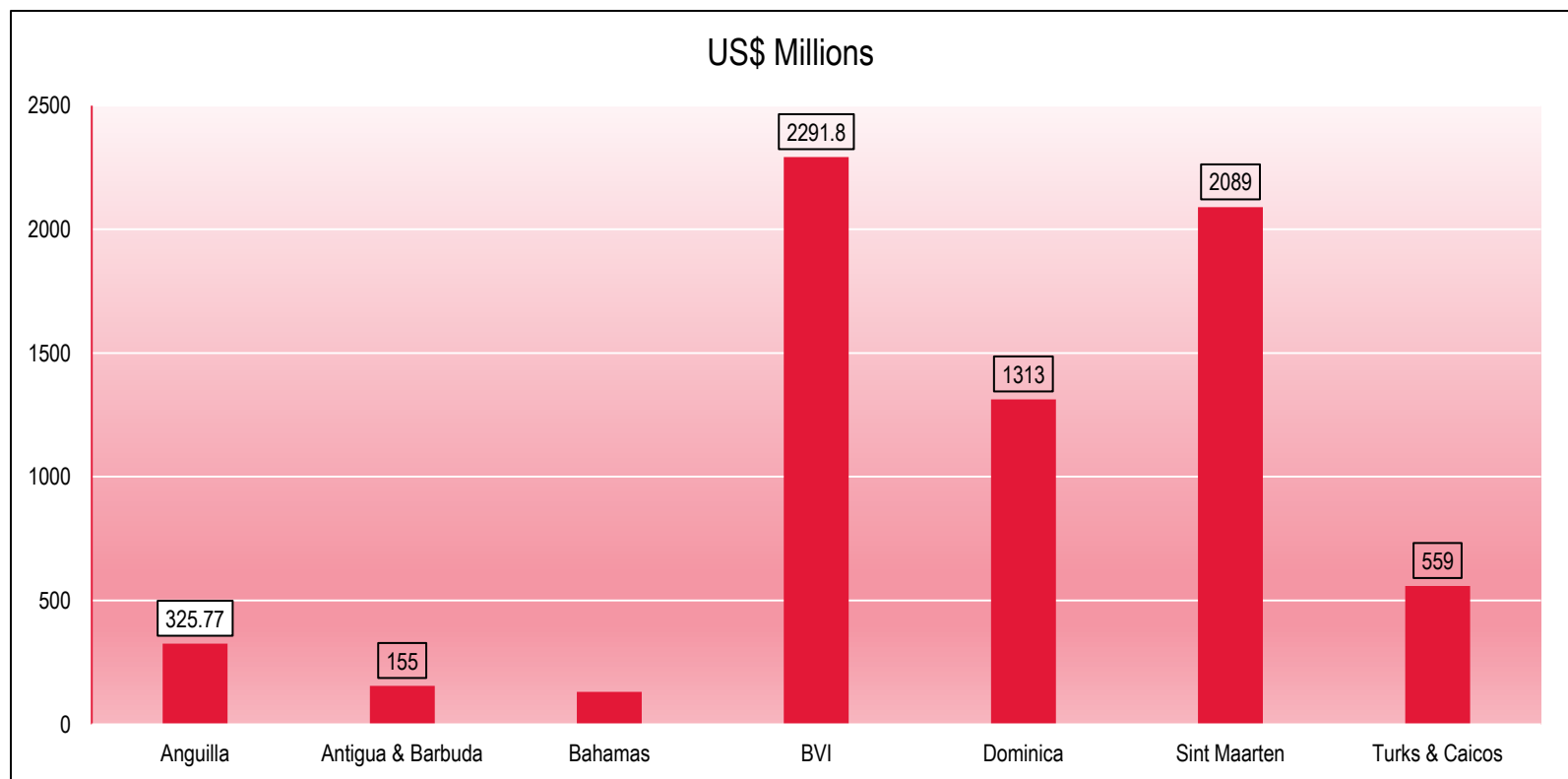
## Observed Rainfall Changes in Caribbean Since 1900

- ❖ Mean annual rainfall over Caribbean, 1900-2000 → a consistent decline by around  $0.18 \text{ mm yr}^{-1}$
- ❖ Southern Caribbean region → contraction in 'traditional' wet season (June-Oct), 1900-1980
- ❖ Longer dry spells and increasing drought incidence since 1900
- ❖ Increase in number of heavy rainfall events in last 75 years





# IMPACT OF IRMA AND MARIA 2017 SELECTED STATES

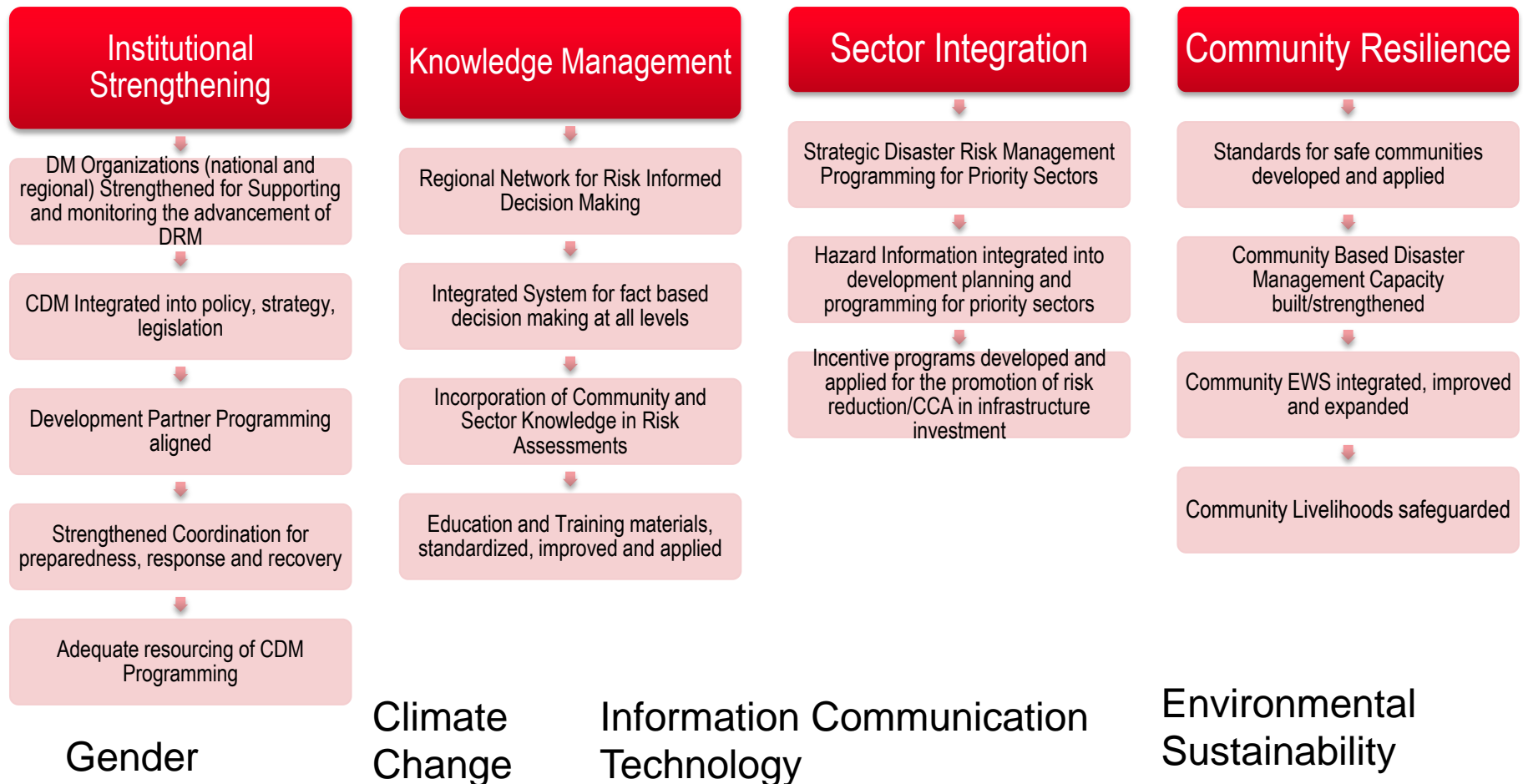


Dominica Damage and Losses: Source Post-Disaster Needs Assessment Hurricane Maria September 18, 2018, Government of Dominica  
Antigua and Barbuda Damage and Losses: Source Post-Disaster Needs Assessment Hurricane Irma, Government of Antigua and Barbuda  
Other Countries: Source Focus Issue 1/January – March 2018, ECLAC Sub regional Headquarters for the Caribbean (Damage, Losses and Additional Costs)

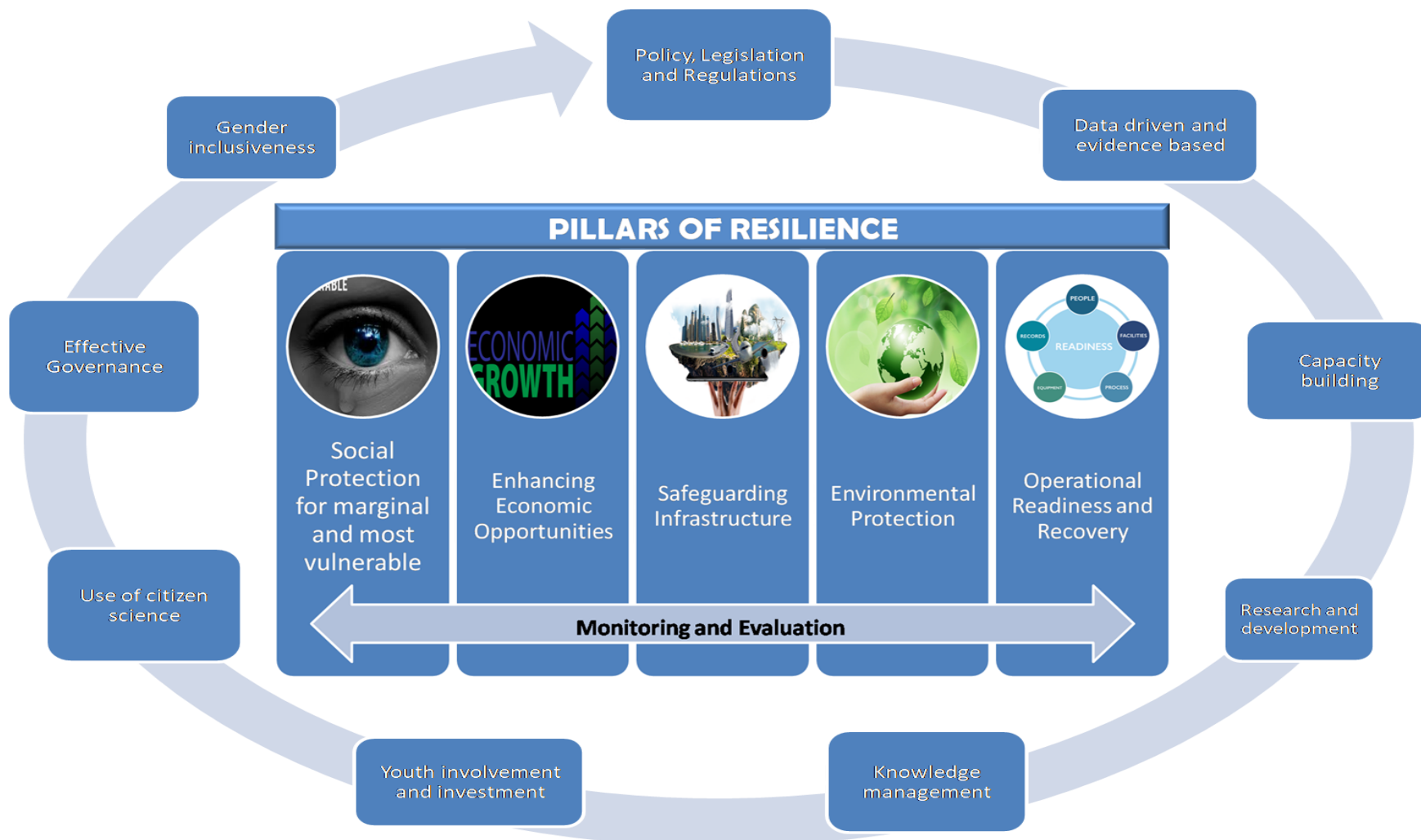


# THE CDM STRATEGY 2014-2024

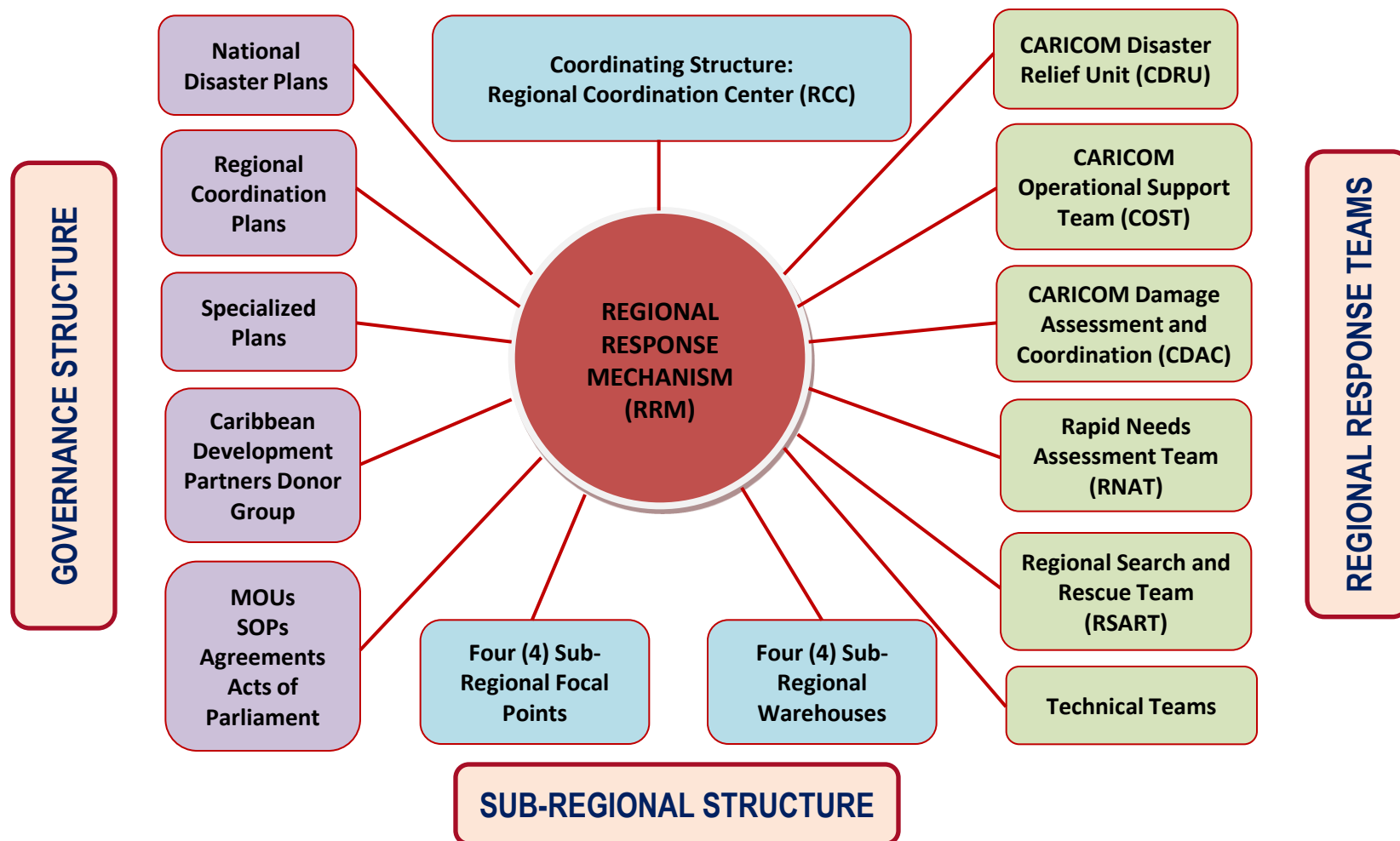
Regional Goal: Safer more resilient and sustainable Caribbean States



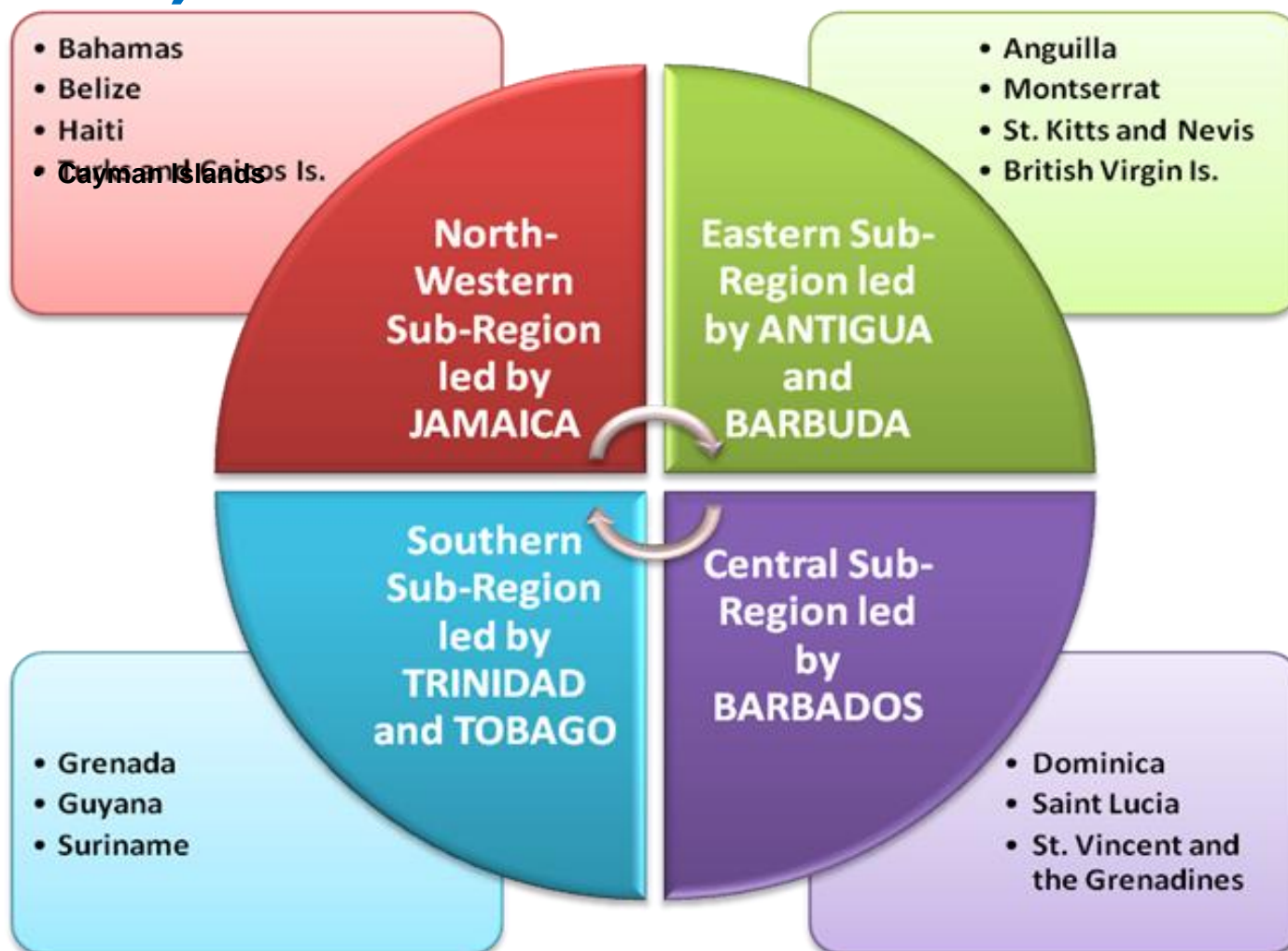
# RESILIENCE FRAMEWORK



# CONCEPTUAL FRAMEWORK FOR THE REGIONAL RESPONSE MECHANISM



# CDEMA'S FOUR SRDEROUS (OR SRFPS)





## Triggering the RRM:

- ❖ The **Regional Coordination Plan (RCP)** is in support of National Disaster Plans and as such the National Disaster Plans must make provisions for triggering the RRM
- ❖ System based on a three tiered response mechanism

### Level 3

Event overwhelms the capacity of the affected state to respond  
- external assistance required

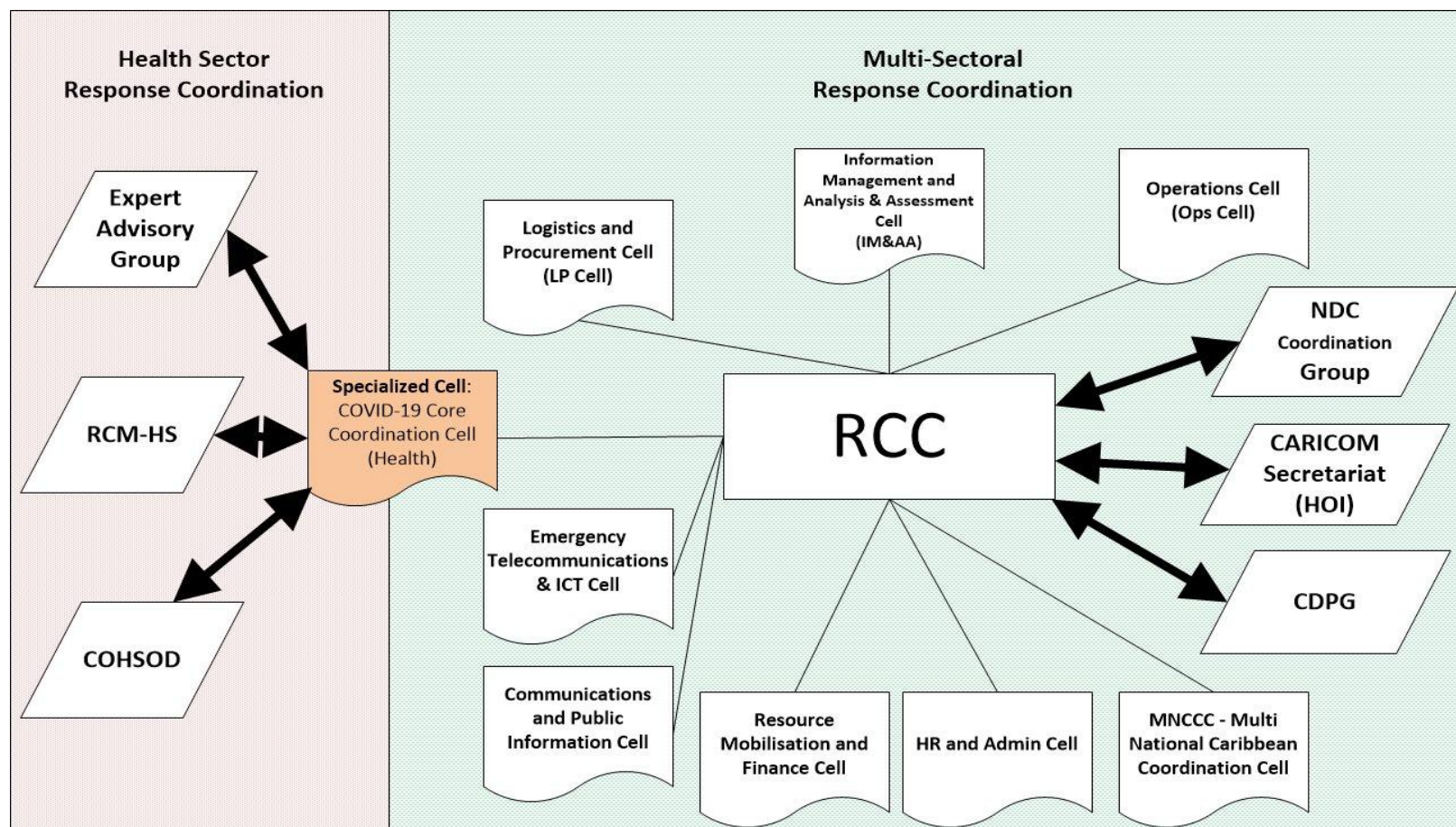
### Level 2

Some external assistance required

### Level 1

No external assistance required

# MULTI-SECTORAL COORDINATION – COVID19



# REGIONAL READINESS – COVID-19

**Modified operational  
plans**

**Deployment Teams –  
COVID-19 Protocols**

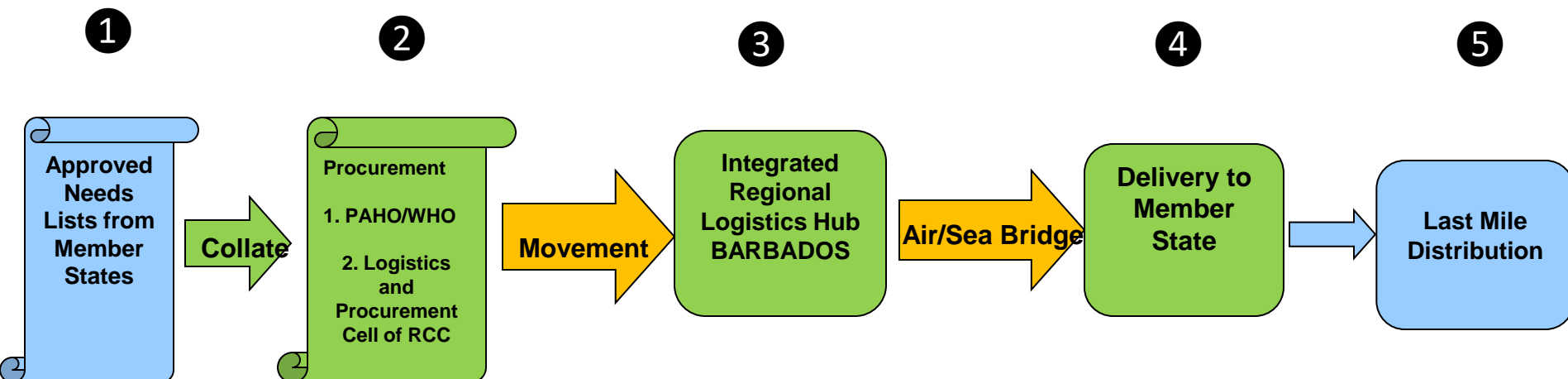
**Expanded ICT  
Integration**

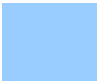
**Partnership with  
UWI - Modeling &  
Surveillance**


**Exercises - COVID-  
19 context**


**Enhanced suite of  
guidelines**

# THE INTEGRATED REGIONAL LOGISTICS MECHANISM (IRLM) – COVID-19



 Actions by Member States

 Regional Logistics and Procurement Actions

 Combined actions - national, regional, other



# THE INTEGRATED REGIONAL LOGISTICS HUB



## Caribbean Development Bank (CDB)

- USD3Million in PPE
- Arrival over 4 weeks – from July 14, 2020
- Beneficiaries: 14 CDB Borrowing Member Countries

## United Arab Emirates (UAE)

- >10 Tons of medical supplies
- Arrived July 23, 2020
- 14 Beneficiary States

## WHO/Jack Ma Foundation

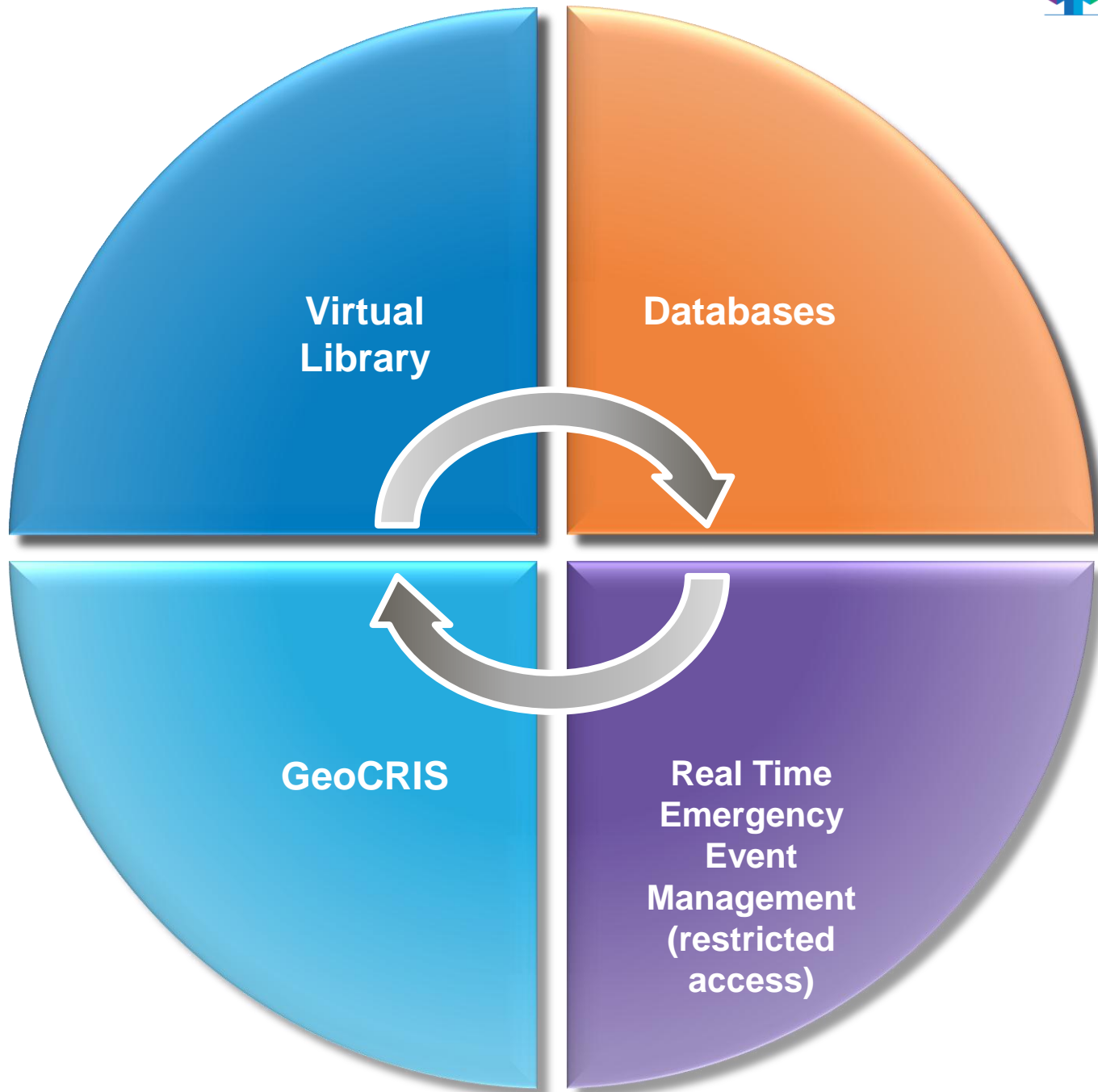
- Value USD728,772.28
- Arrived July 26, 2020
- Beneficiary: 20 CARICOM States

Air-bridge: July 23 – Aug 25, 2020

Sea-bridge: July 21 – Aug 20, 2020



# CRIS ARCHITECTURE





# OBSERVATIONS

- 12 CDEMA Participating States are MACHC Member States or Associate Member States
- Common Partners

## MACHC Member States

- ❖ Guyana
- ❖ Jamaica
- ❖ Suriname
- ❖ Trinidad and Tobago

## MACHC Associate Member States

- ❖ Antigua and Barbuda
- ❖ Barbados
- ❖ Belize
- ❖ Grenada
- ❖ Haiti
- ❖ Saint Lucia
- ❖ St. Kitts and Nevis
- ❖ St. Vincent and the Grenadines

## MACHC Partners

- ❖ MapAction
- ❖ RAC-REMPETIC



# CONSIDERATIONS GOING FORWARD

GEO CRIS –  
Repository; Support  
Decision Making

Logistics for Relief  
Management

Coordination: Creating  
Spaces ... Facilitating  
Connections

# THANK YOU

Liz Riley, Executive Director (ag), CDEMA  
[elizabeth.riley@cdema.org](mailto:elizabeth.riley@cdema.org)

