

23rd Conference of the Meso American - Caribbean Sea Hydrographic Commission

National Report by Brazil

Directorate of Hydrography and Navigation

Brazilian Navy

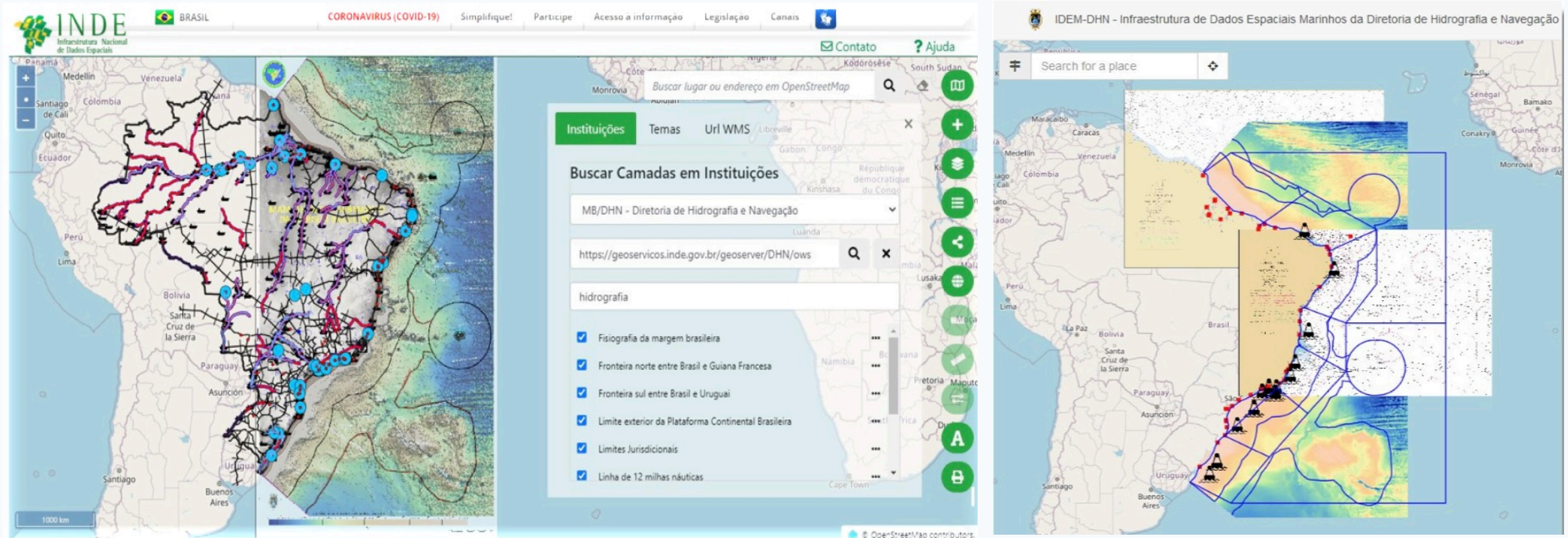


IHO

International
Hydrographic
Organization



Top Achievements during the year



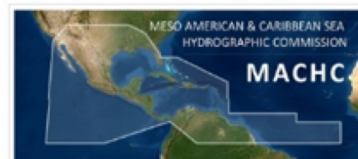
Launch of the Brazilian MSDI (IDEM DNH) as part of the Brazilian SDI in October

<https://idem.dhn.mar.mil.br/>



IHO

International
Hydrographic
Organization



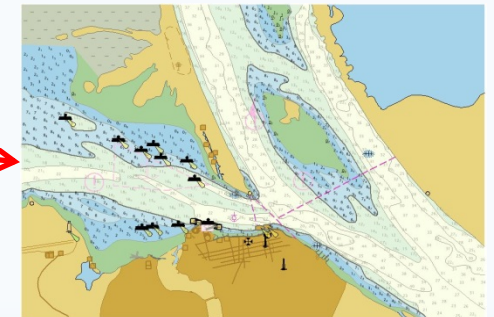
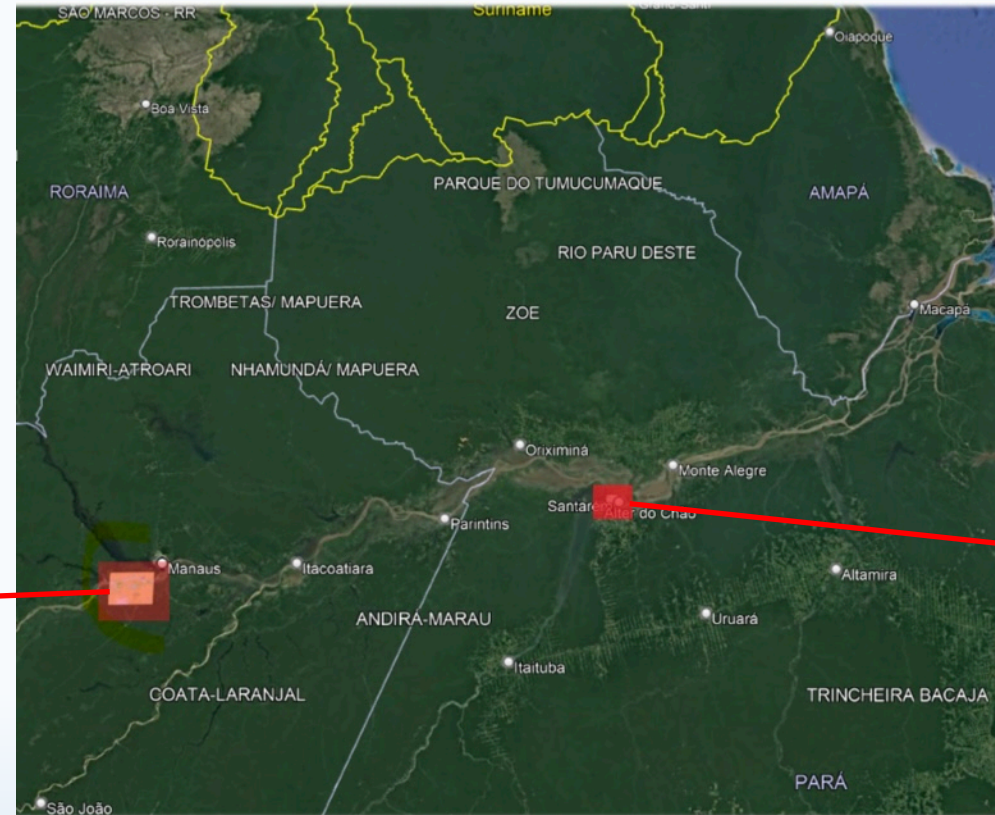
Top Achievements during the year

Production of new Nautical Charts

Involvement of the Regional Hydrographic Branches (Belém and Manaus) in the Amazon Basin.



Baixio Is. to Barroso Is.

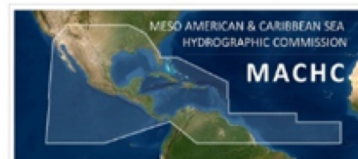


Port of Santarém

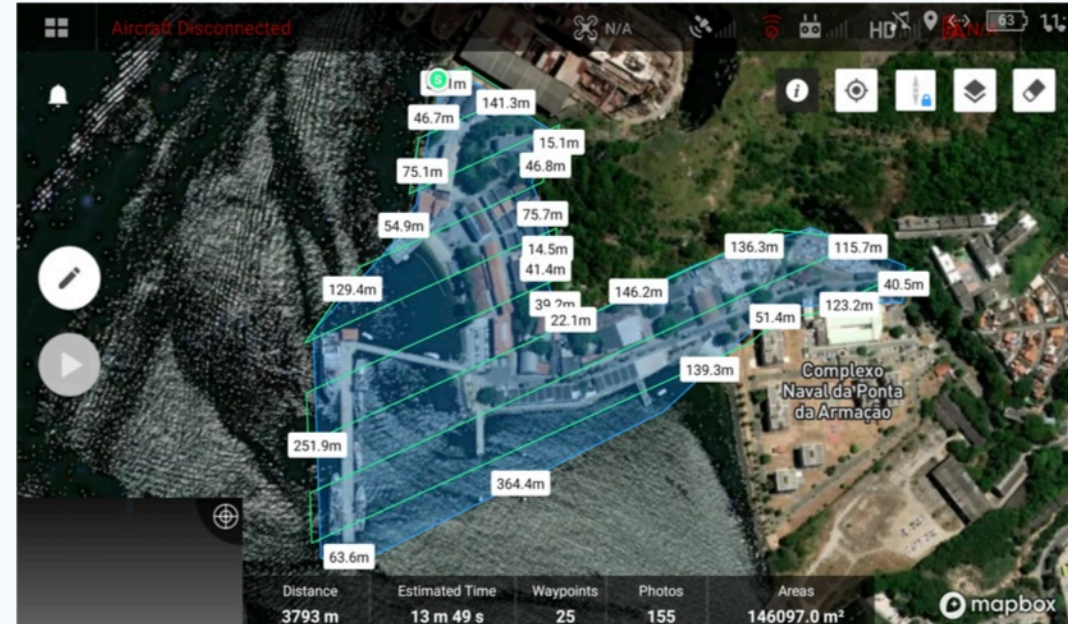


IHO

International
Hydrographic
Organization



Top Achievements during the year



Flight plan on the survey at DHN area

Unmanned Aerial Vehicle (model Dji Mavic 2 Pro PPK) - able to achieve 25 cm resolution. Advantage over the old method (camera attached to a helicopter): portable, availability, simpler and low cost operation.

Top Challenges and/or Obstructions

- The implementation of an online form for issuing standardized Maritime Safety Information (MSI) - tool to improve the management and the digital register; testing phase.
- Availability of more marine data/products and enhancement of the capabilities of the Brazilian MSDI (IDEM DHN) geoportal.
- Progress the increase of the capabilities in Hydrography and Cartography of the Regional Hydrographic Branches (Belém and Manaus) in the Amazon Basin.

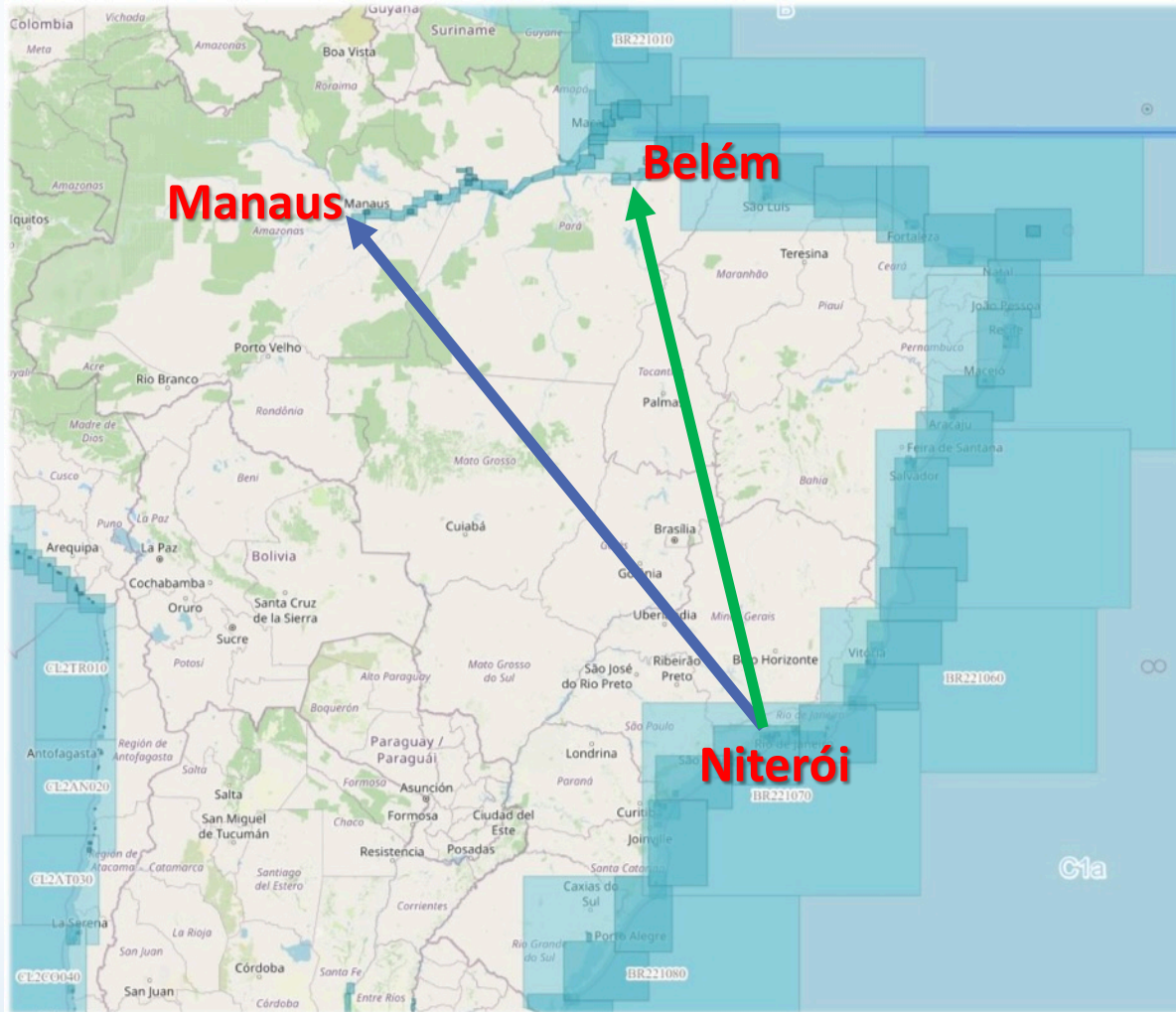


IHO

International
Hydrographic
Organization



Top Challenges and/or Obstructions



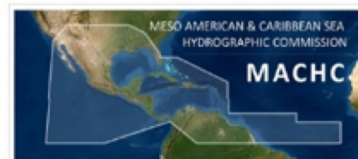
Resources:

- ⇒ **Technical Staff** (surveyors, cartographers and IT)
- ⇒ **Operational Infrastructure** (ships, equipment)
- ⇒ **Technologies and Connection with Database**
- ⇒ **Constant Assessment**
- ⇒ **Guidance**



IHO

International
Hydrographic
Organization



Top Plans that affect the region

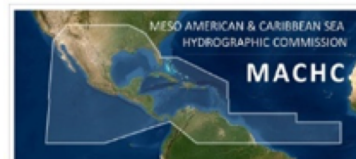
- Conclusion of the Oracle database management systems (CARIS HPD and Bathy DataBASE applications) upgrade as well as migration to the Oracle Exadata environment in preparation for the S-100 standard.
- Improve Capacity Building in the Regional Hydrographic Branches (Belém and Manaus) in the Amazon Basin.

REGIONAL HYDROGRAPHIC BRANCH	SURVEY ANALYSIS	BATHYMETRIC DATABASE	PAPER CHART	ENC Inland ENC
Belém	Enabled	Enabled	Enabled	Ongoing
Manaus	Enabled	Ongoing	Ongoing	Ongoing



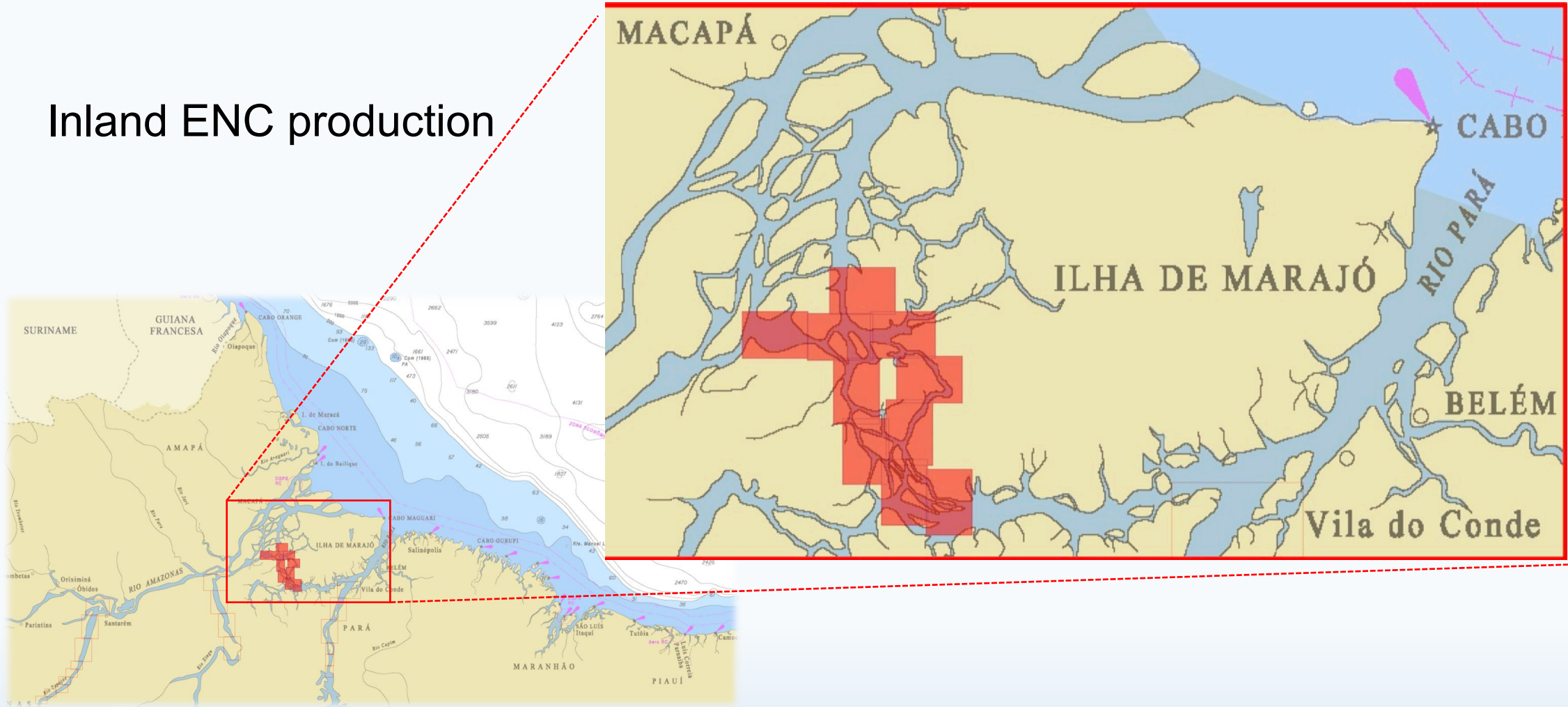
IHO

International
Hydrographic
Organization



Top Plans that affect the region

Inland ENC production



23rd Conference of the Meso American - Caribbean Sea Hydrographic Commission

National Report by Brazil

Directorate of Hydrography and Navigation

Brazilian Navy



IHO

International
Hydrographic
Organization

