

# Meso American - Caribbean Sea Hydrographic Commission

## **MACHC International Charting Coordination (MICC) Report 2022**

**MICC CHAIR  
Bernice Mahabier**

Date 01-12-2022



**IHO**

International  
Hydrographic  
Organization



# Presentation Agenda

---

- Membership and Work Procedures
- MACHC ENC boundary
- MICC updates:
  - ENC Progress
  - INT chart progress
  - Cruise ship port analysis
- Proposal MACHC Regional ENC Scheme
- S 100 updates



IHO

International  
Hydrographic  
Organization



# Membership and Work Procedures

---

## MICC Members :

Brazil, Colombia, Cuba, El Salvador , France, Mexico, Netherlands, Suriname, United Kingdom, United States, Venezuela, IC-ENC

## Work procedures:

- Quarterly calls , sub working group calls, annual meeting
- Member states actively work to resolve chart overlaps
- Updates for ENC Online
- Member states provide INT Chart and ENC updates
- Member states actively work to resolve MICC related matters



IHO

International  
Hydrographic  
Organization

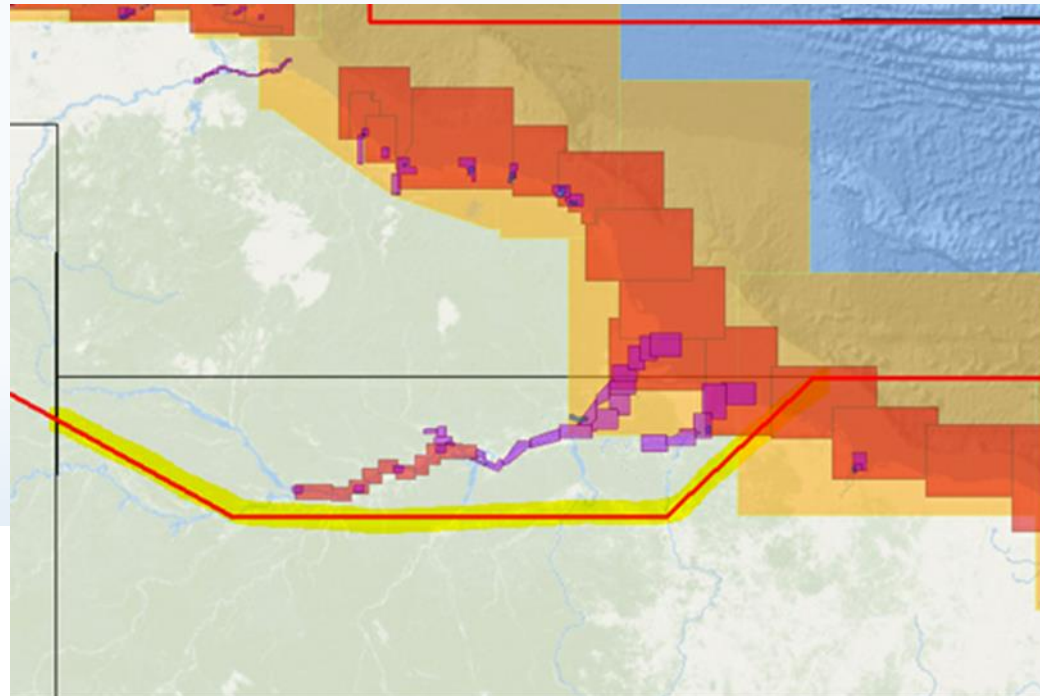


# The MACHC ENC Boundary

---

Some years ago a decision was made to extend the boundary to include parts of the Amazon river.

- \* The boundary proposal was approved by the MICCWG
- \* Brazil has submitted the proposal to the SWATH for approval, approval was obtained.
- \* The proposal was approved by MACHC members
- \* The boundary was officially submitted to the IHO and adopted

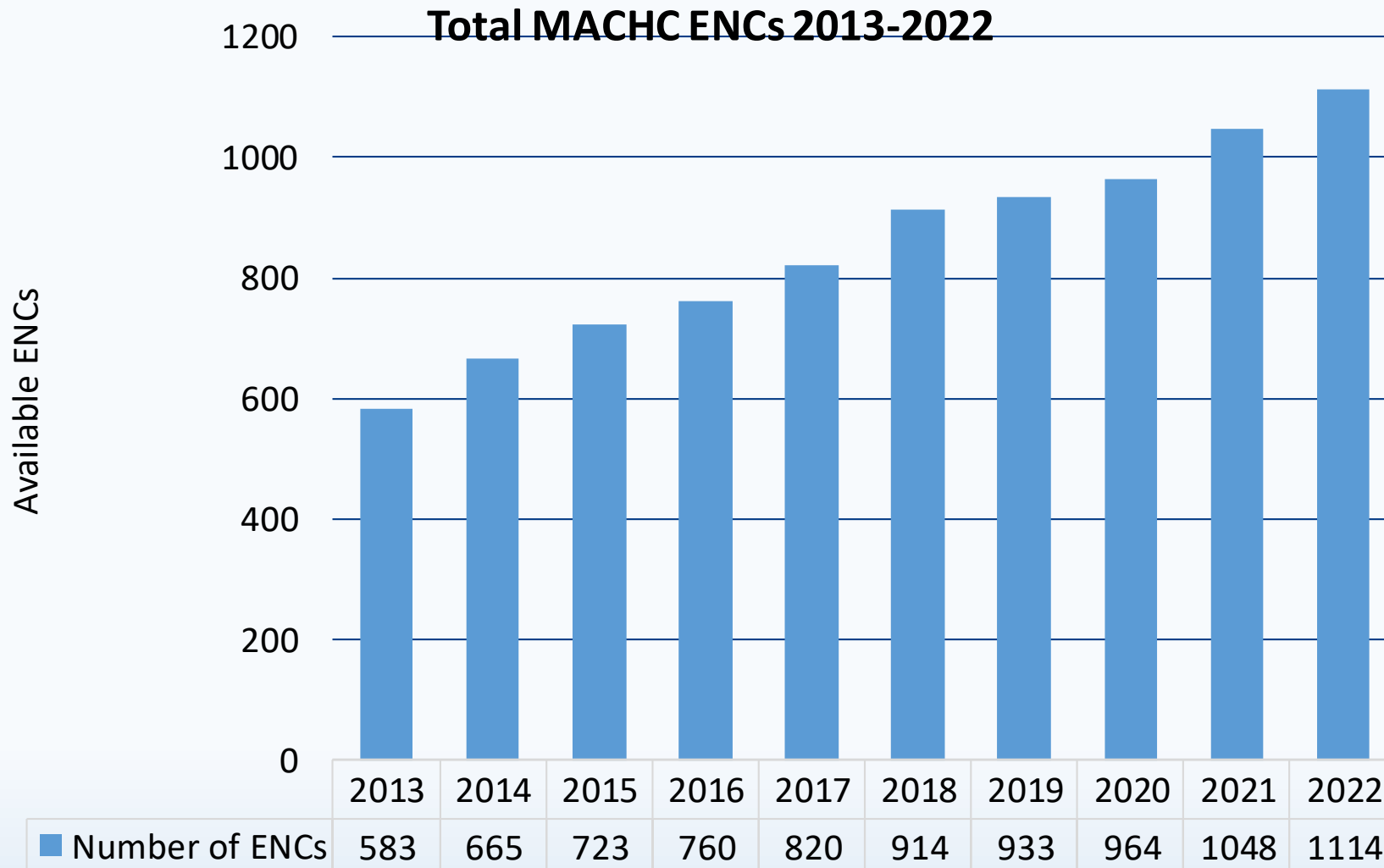


IHO

International  
Hydrographic  
Organization



# MACHC ENC's Availability



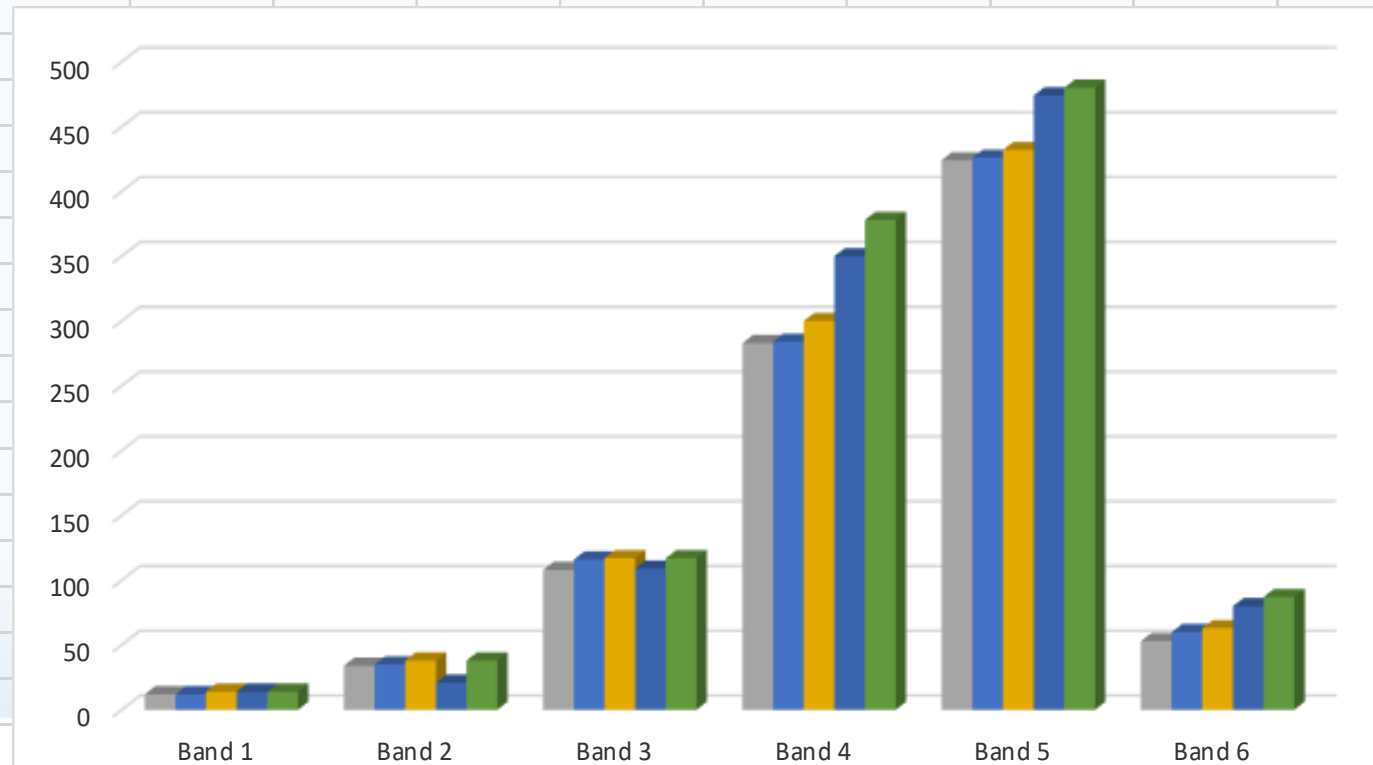
**IHO**

International  
Hydrographic  
Organization



# MACHC ENC's by Usage Band

	Band 1	Band 2	Band 3	Band 4	Band 5	Band 6					
2018	12	34	108	283	424	53					
2019	12	35	116	284	426	60					
2020	14	38	117	300	432	63					
2021	14	21	109	350	474	80					
2022	14	38	117	378	480	87					



IHO

International  
Hydrographic  
Organization



# MACHC Regional Band 1 ENC Scheme

---

Report by MICC sub working group M.R.E.S. Chaired by Mexico.

United States :Julio Castillo (US)

Columbia :Olga Bonfante (CO)

UKHO: Nick Rodwell



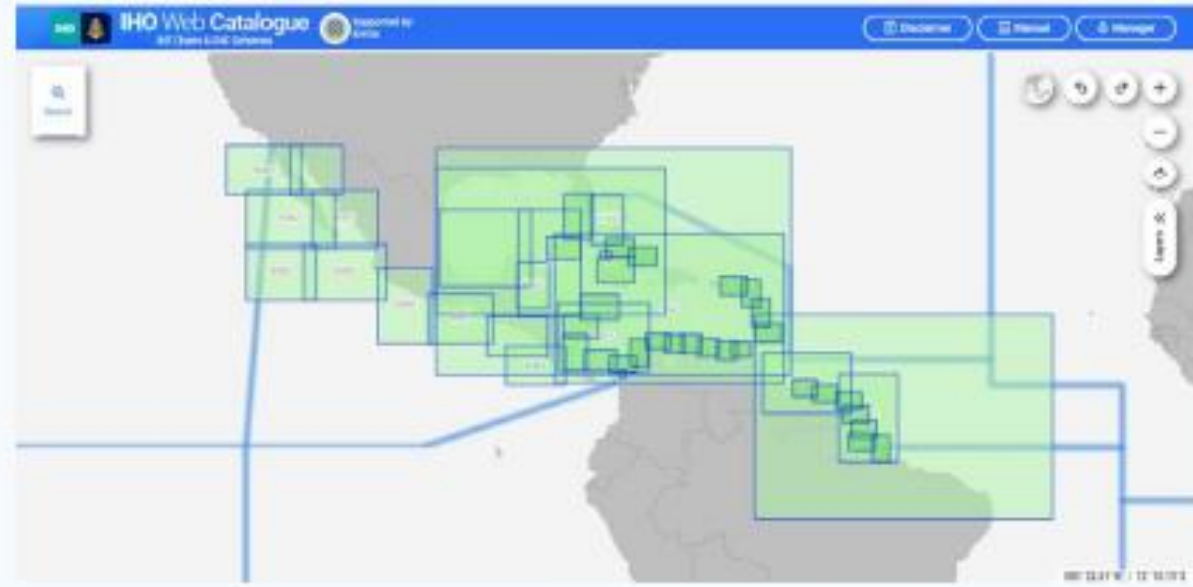
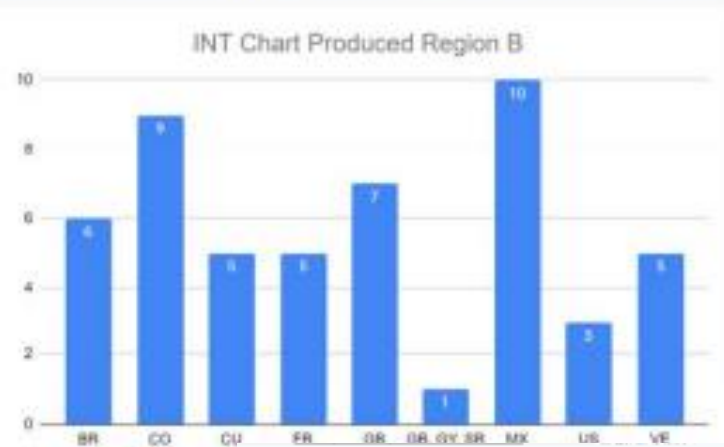
IHO

International  
Hydrographic  
Organization



# INT Charts update

- No pending submissions
- No updates on current coverage.



INT Chart Schemed Region B

Total 51 INT Charts Produced

Total 33 INT Charts Schemed



# Cruise Ship Port update

---

- 2018/2019- anchorage areas were included making the area in total 92 and currently only 32 not covered
- 2019-2021- total 193 and currently only 14 not covered
- 2021-2022- total 193 and currently only 8 not covered

The cruise ship port gap list is on the MACHC- MICC webpage for member states and associated members to fill the Gaps



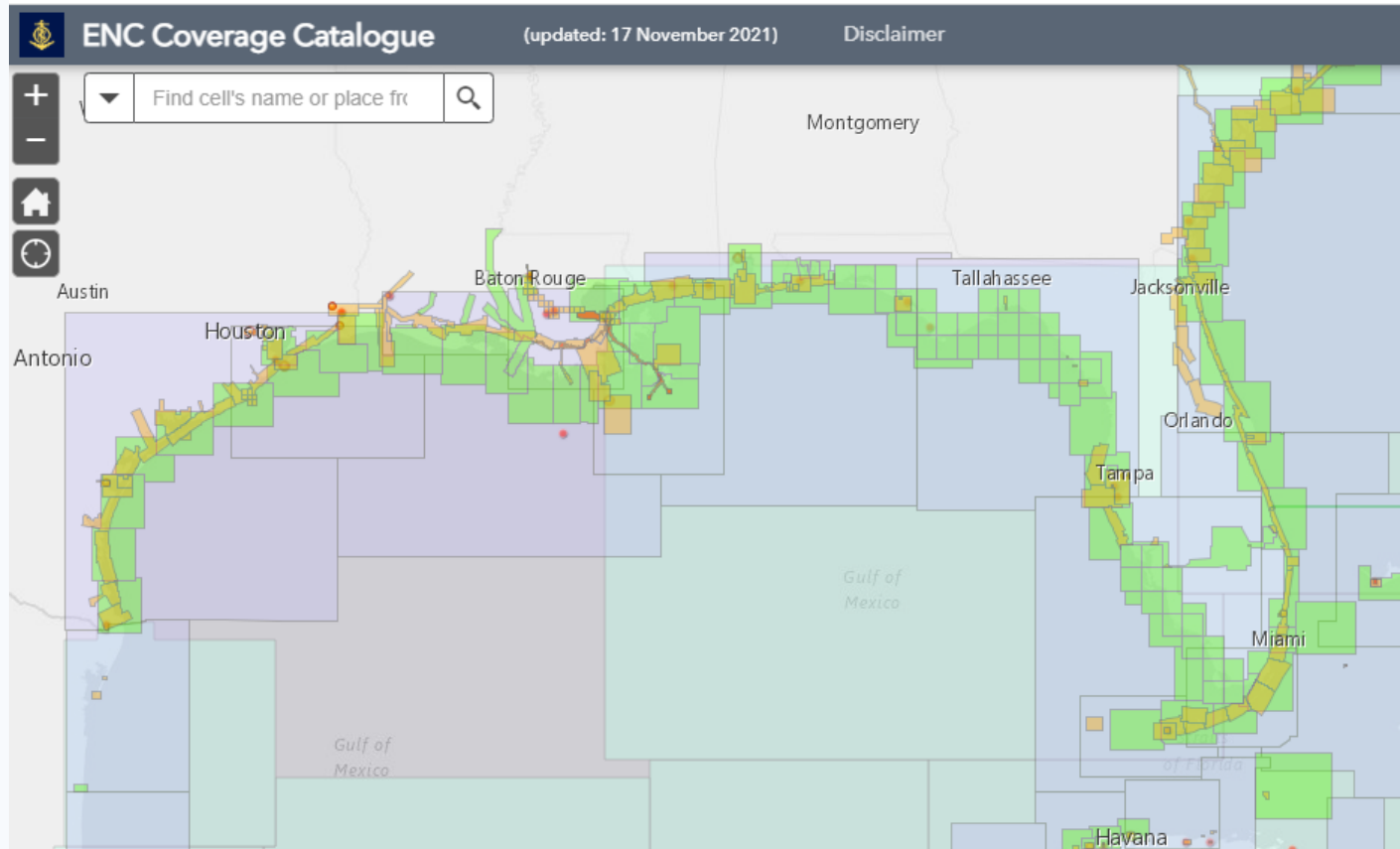
# S100 update

---

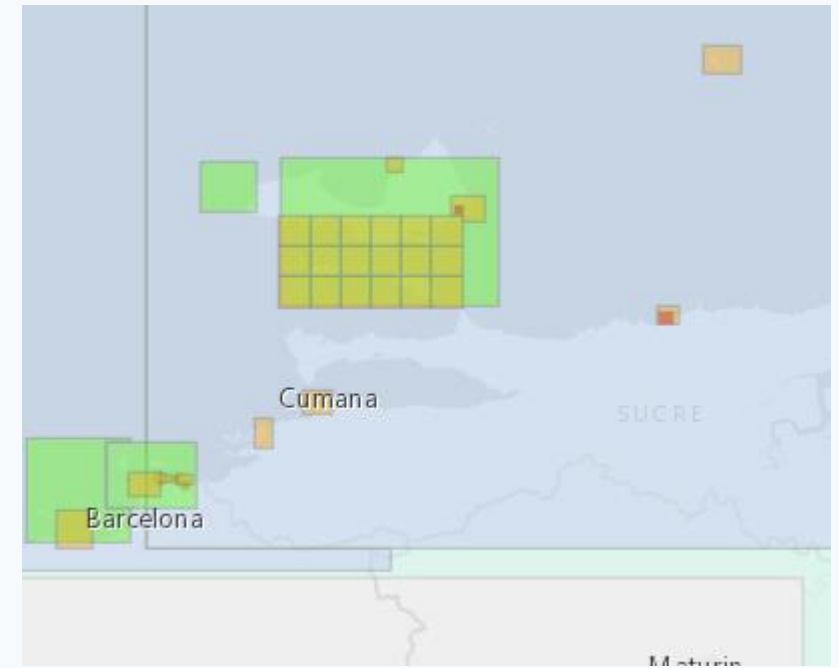
- Discussion Paper on the Role of the S100 coordinator
- The S 100 implementation - WEND100-IGIF Matrix
- Test bed update
  - ✓ Netherlands: S-102 ( Bathymetry)
  - ✓ USA: S102, S-111 (surface currents)
  - ✓ France: S102, S-124
  - ✓ UKHO
- MACHC Regional Gridded ENC Scheme- Band 1 – MRES WG
- Gridding plan of different MS such as US, NOAA , Venezuela & UKHO
- IC-ENC (RENC) and MACHC Chart producers have incorporated S100 services in their business plan
- Capacity building opportunity for IC-ENC members and nonmembers through IC-ENC Learning Management System (LMS)
- The IC-ENC has dedicated a LMS dashboards and discussion forum for the MACHC for ENC Gridding. This allows sharing of good practice/ collaboration and the ability to ask and answer questions.



# MACHC ENC<sub>s</sub>



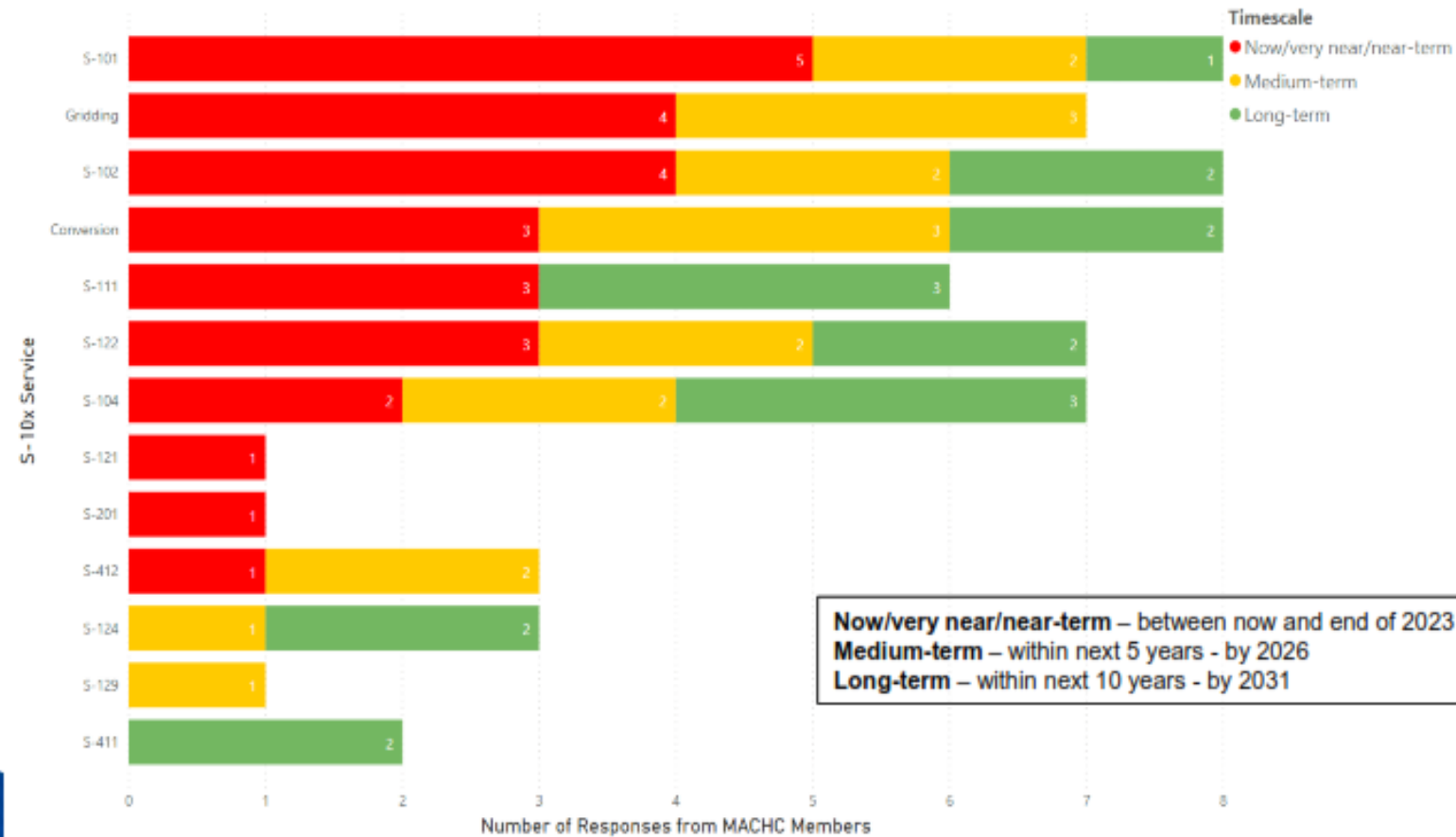
Gridded scheme USA



Gridded Scheme Venezuela

# S100 production plans

## IC-ENC/MACHC Member S-10x Production Plans



## IC-ENC Member S-10x Production Plans

- 10 IC-ENC Members are members of MACHC (inc. one associate member)
- An IC-ENC survey was sent out to members in early 2021 to establish their S-10x production plans
- 8 out of 10 IC-ENC/MACHC Members completed the survey:

Brazil	Suriname
Colombia	UK
Mexico	USA
Netherlands	Venezuela

- Response requested from: Cuba and Panama

# Requests to MACHC MS and AS

---

- Note the MICC Report
- Approve the MICC 2023 Work Plan
- Approve MACHC Regional Gridded ENC Scheme- Band 1 – MRES WG
- Submission of INT Chart submission to IHO Web Catalogue (<http://chart.iho.int:8080/iho/main.do>) and maintenance of ENC schemes using INToGIS II
- Submission of CATZOC information to the IHO via the RENC, IC-ENC Circular Letter 2017/11-Proposed Joint RENC policy on IHO Secretariat's use of ENC CATZOC file analysis and IC-ENC CL2019/15 - Supply of CATZOC files to the IHO.
- Submission of the C55 to the IHO .  
<https://iho.int/en/iho-c-55>
- Report capacity building opportunities with regards to S100 products and services



---

**THANK YOU VERY MUCH!**



**IHO**

International  
Hydrographic  
Organization

