

# 24<sup>th</sup> Conference of the Meso American - Caribbean Sea Hydrographic Commission

## National Report by Brazil

Directorate of Hydrography and Navigation

Brazilian Navy



IHO

International  
Hydrographic  
Organization



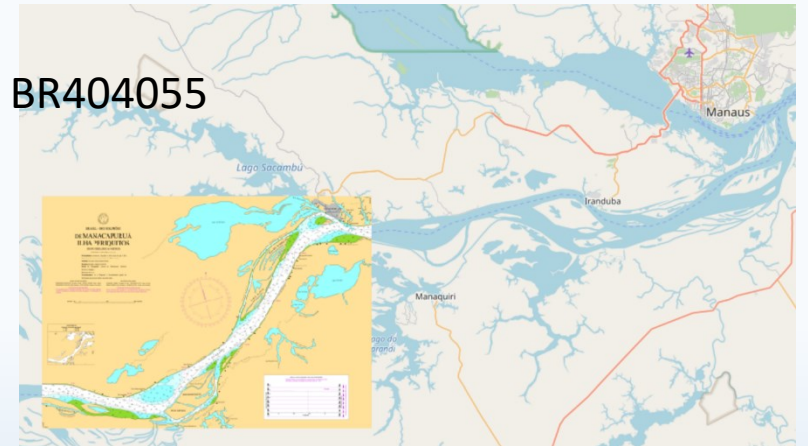
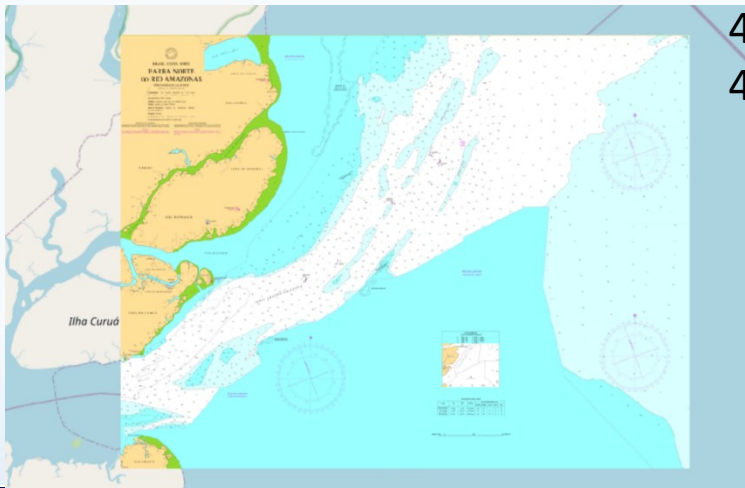
# Top Achievements during the year

## Production of new Nautical Charts

Involvement of the Regional Hydrographic Branches (Belém and Manaus) in the Amazon Basin.



- 221 – Barra Norte do Rio Amazonas / BR400221
- 4052 – De Manacapuru à Ilha Periquitos / BR404052
- 4054 – De Anori a Codajás / BR404054
- 4055 – De ilha de Codajás à ilha Trocari / BR404055

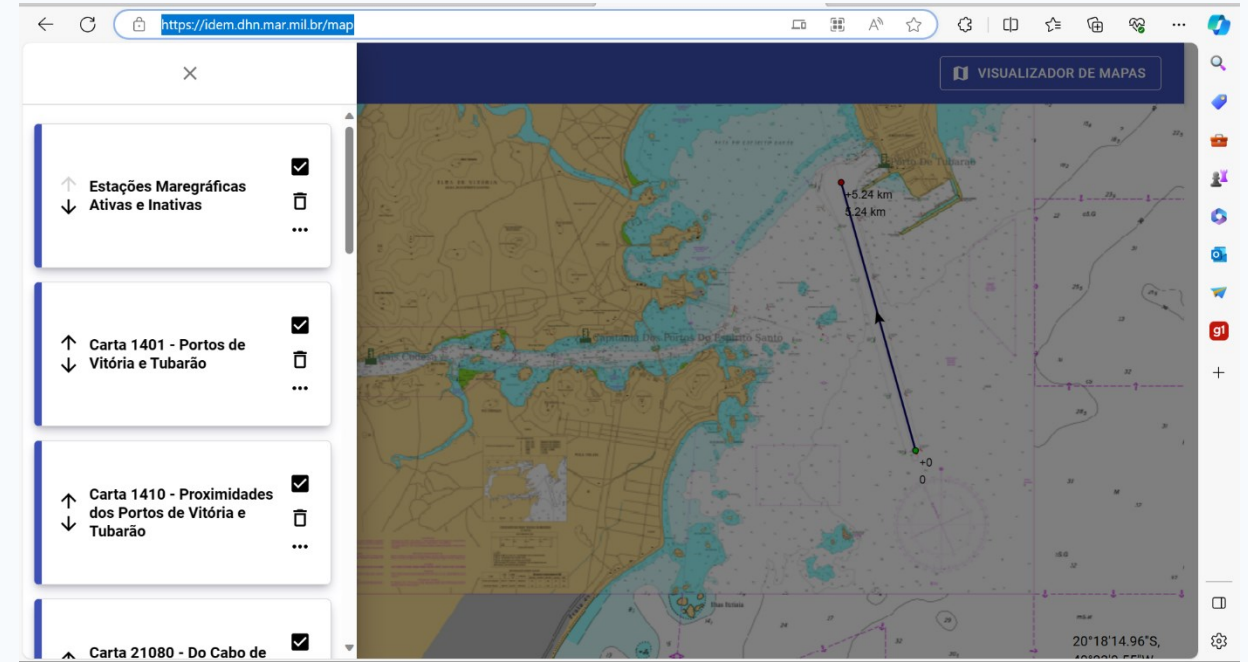
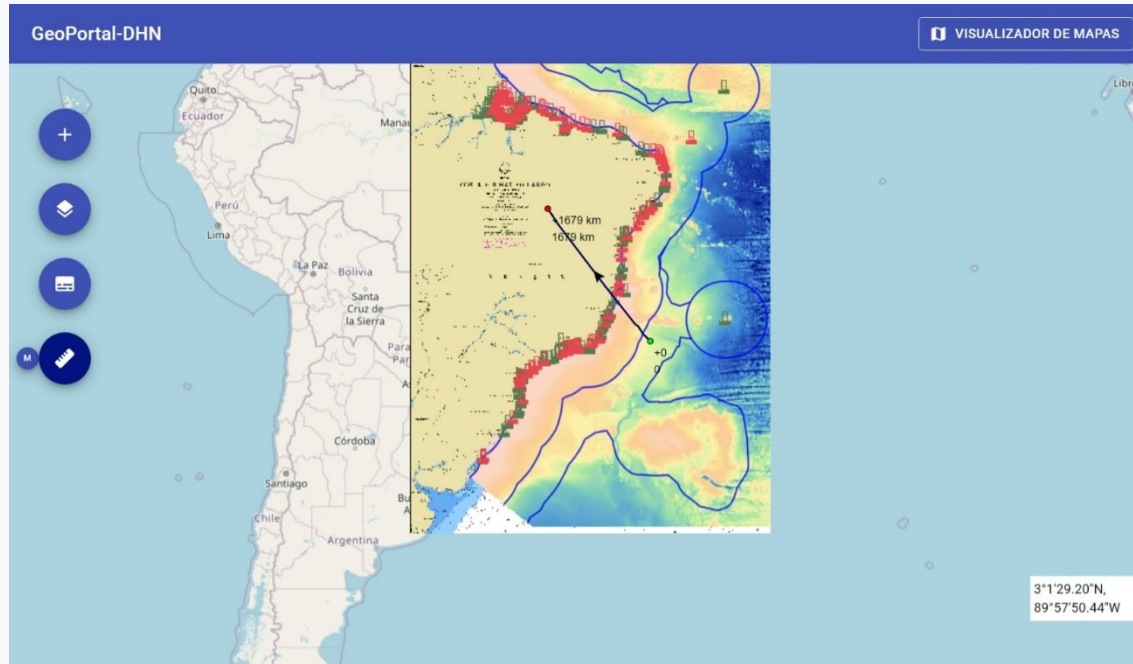


IHO

International  
Hydrographic  
Organization



# Top Achievements during the year



## Improvements on the Brazilian MSDI (IDEM DHN)

<https://idem.dhn.mar.mil.br/>



IHO

International  
Hydrographic  
Organization



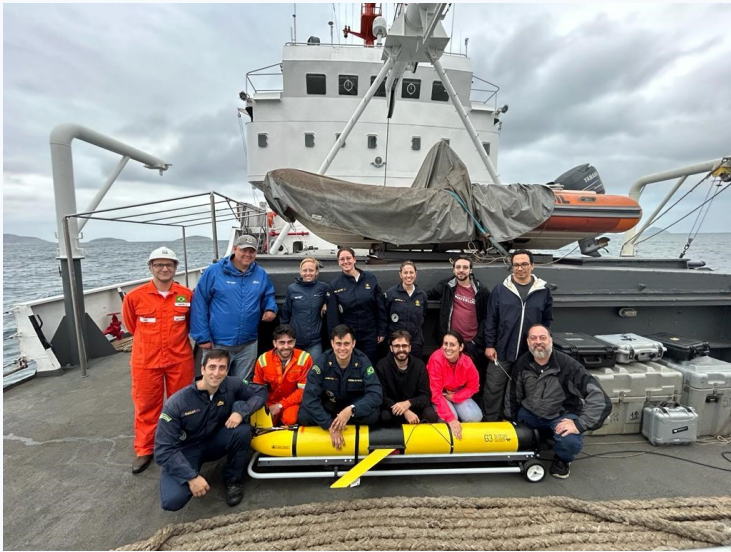
MESO AMERICAN & CARIBBEAN SEA  
HYDROGRAPHIC COMMISSION

MACHC



# Top Achievements during the year

## The use of new technologies



Glider



Drone for aerophotogrammetry



AUV

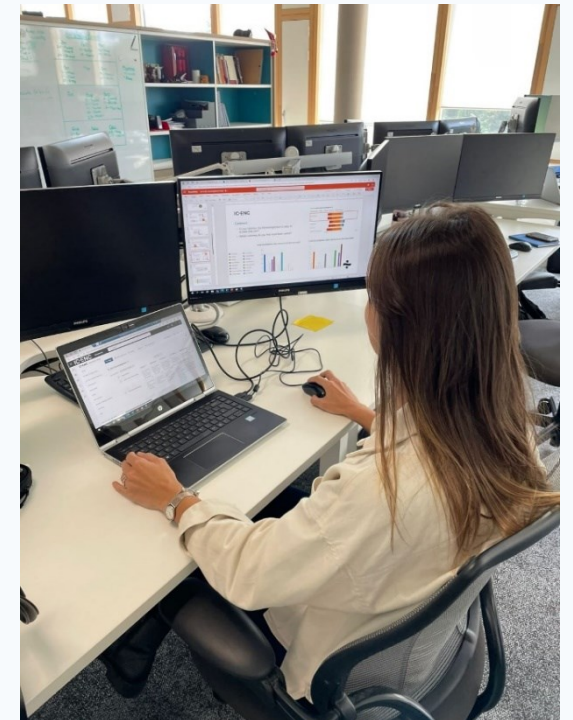
# Top Achievements during the year



**The use of Unmanned Aerial Vehicle in aerophotogrammetry received Brazilian Navy's Innovation Award.**



# Top Achievements during the year



## Participation in IHO's Capacity Building events: EWH @A-2 - EWH @IC-ENC

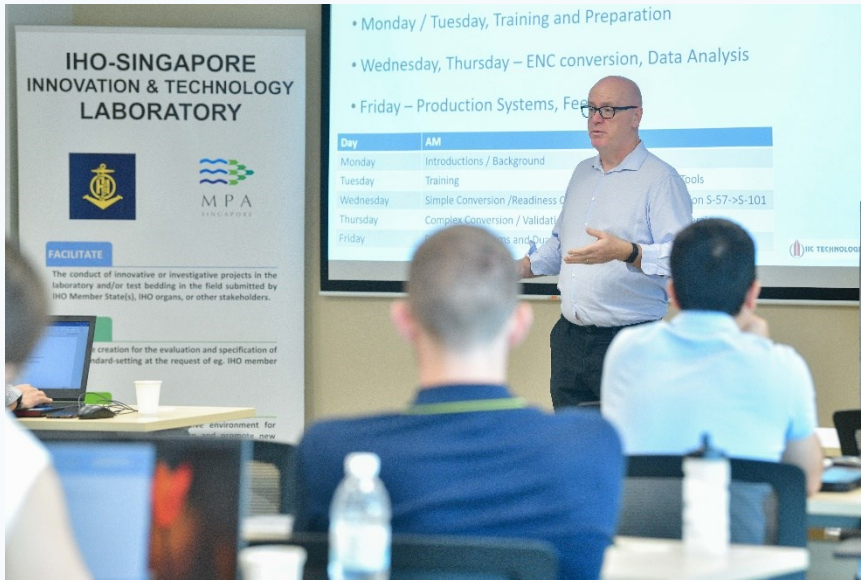


IHO

International  
Hydrographic  
Organization



# Top Achievements during the year



## Participation in IHO's Capacity Building events:

MACHC Tides Training Course @Costa Rica

IHO's Workshop on S-57 to S-101 Training and Conversion @Singapore



**IHO**

International  
Hydrographic  
Organization





# Top Challenges and/or Obstructions

- Implementation of S-100 based products.
- Carrying out trainings and workshops beyond the scope of the CBWP.
- Progress the increase of the capabilities in Hydrography and Cartography of the Regional Hydrographic Branches (Belém and Manaus) in the Amazon Basin.



IHO

International  
Hydrographic  
Organization





# Top Plans that affect the region

---

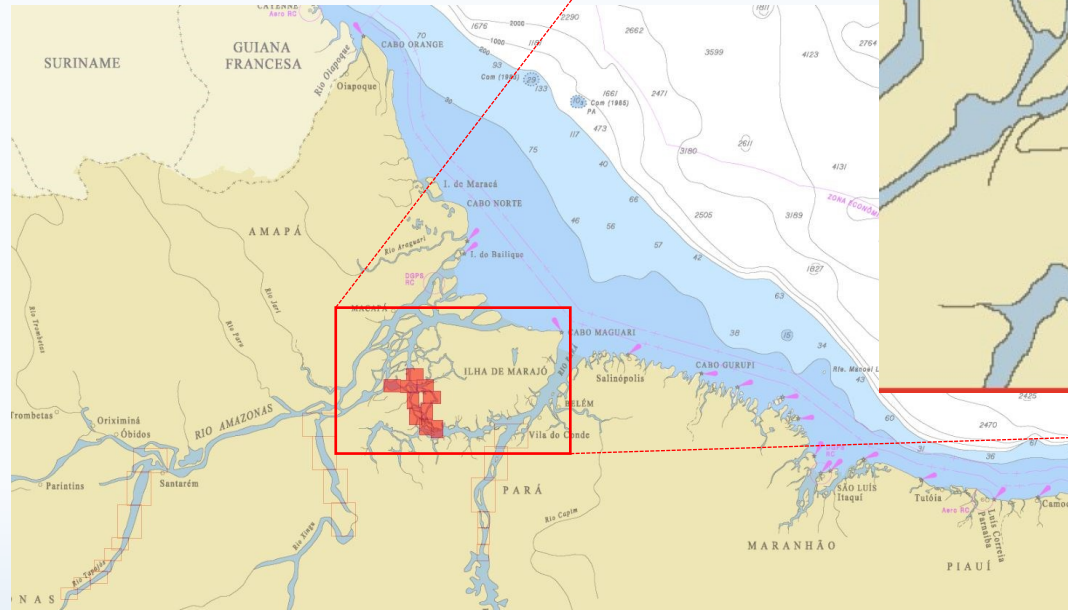
- Improve Capacity Building in the Regional Hydrographic Branches (Belém and Manaus) in the Amazon Basin.

REGIONAL HYDROGRAPHIC BRANCH	SURVEY ANALYSIS	BATHYMETRIC DATABASE	PAPER CHART	ENC Inland ENC
Belém	Enabled	Enabled	Enabled	Enabled
Manaus	Enabled	Enabled	Ongoing	Ongoing



# Top Plans that affect the region

Inland ENC production for  
Brazilian Waterways



IHO

International  
Hydrographic  
Organization



# 24<sup>th</sup> Conference of the Meso American - Caribbean Sea Hydrographic Commission

## National Report by Brazil

Directorate of Hydrography and Navigation

Brazilian Navy



IHO

International  
Hydrographic  
Organization

