

# Coordination of Regional Charting

## BASWG15

VTC, 11 May 2021

By Region F ICC Coordinator  
Lt. Cdr. Marta PRATELLESI (Italy)



**IHO**

International  
Hydrographic  
Organization

BASWG15  
VTC, 11 May 2021

**BASWG-15.06**

# Preliminary considerations

---

- COVID-19 affected HOs activities and lives
- Despite that good involvement of MSs
- Major attention to INT PCs than ENC's
  
- BASWG15 is an occasion to update the coordinator that will report to the ICC WG and MBSHC22!



Satellite image of the Black sea – photo credit NASA



IHO

International  
Hydrographic  
Organization

BASWG15  
VTC, 11 May 2021

# INT Charts in the Black and Azov Seas

- Increasing use of INTToGIS by producers to update already approved charts (schemed or produced) & to submit new proposals for inclusion in the catalogue
- Updates received from RO, UA

Action N°	Action	Responsible	Update
MBSHC21/42 (BASWG14/03)	New INT chart producers to <b>provide Region F ICC with the INT charts</b> iaw IRCC7 Decision3.	All - New INT producers	Updates received from UA
MBSHC21/41 (BASWG14/03)	MS to check and, if necessary, <b>update their INT charts metadata</b> (chart limit, title, year, format, scale, etc.) included in the region F INT catalogue using their INTToGIS national account.	INT producers	Updates received RO, UA



IHO

International  
Hydrographic  
Organization

BASWG15  
VTC, 11 May 2021

# INT Charts in the Black and Azov Seas

- **Agreed INT Scheme** : 33 Produced & **9 Schemed charts** (April 2018)
- New version of the catalog v. 4.0.25 April 2021

The screenshot displays the IHO INT Charts catalog interface. On the left, a map shows the Black and Azov Seas region with callouts for Romania (RO) and Georgia (GE). A detailed view of chart INT 3906 is shown, including its title, nation, and production status. On the right, a table lists various chart records with columns for INT No, PanelId, INT Region, Region\_Ver., INT Title, and Producer.

<input type="checkbox"/>	INT No	PanelId	INT Region	Region_Ver.	INT Title	Producer
<input type="checkbox"/>	3871	PART-A	F	4.0.5 - FEB. 2021	Batumi Port	GE
<input type="checkbox"/>	3876	PART-B	F	4.0.5 - FEB. 2021	Chanel Kulevi	GE
<input type="checkbox"/>	3876	MAIN	F	4.0.5 - FEB. 2021	Kulevi Port wit...	GE
<input type="checkbox"/>	3872	MAIN	F	4.0.5 - FEB. 2021	Georgian Coast...	GE
<input type="checkbox"/>	3873	MAIN	F	4.0.5 - FEB. 2021	Poti Port with ...	GE
<input type="checkbox"/>	3873	PART-A	F	4.0.5 - FEB. 2021	Poti Port	GE
<input type="checkbox"/>	3871	MAIN	F	4.0.5 - FEB. 2021	Batumi Port wit...	GE
<input type="checkbox"/>	3876	PART-A	F	4.0.5 - FEB. 2021	Port Kulevi	GE



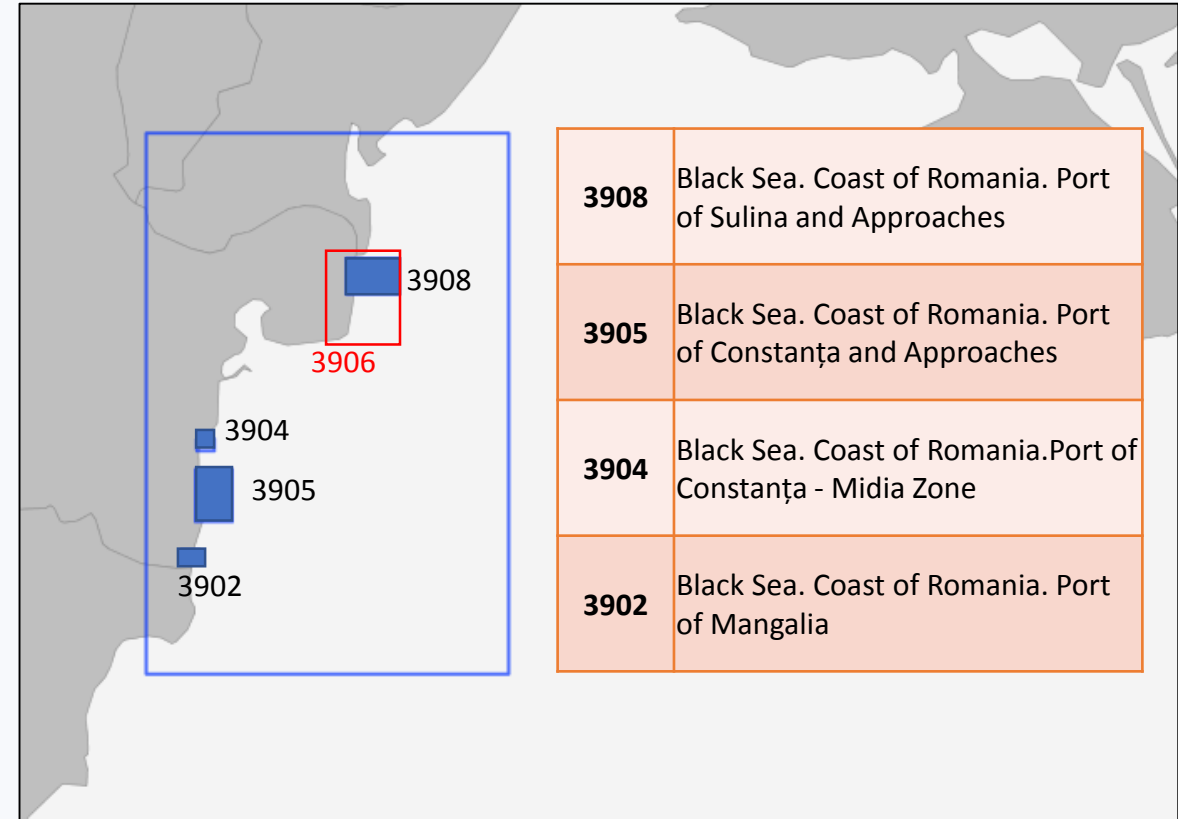
IHO

International Hydrographic Organization

BASWG15  
VTC, 11 May 2021

# INT Charts Updates - RO

- Request from RO to update INT Charts Edition (2020 – 2021)
- INToGIS Catalogue: INT 3906 is schemed (National edition 2006)



**IHO**

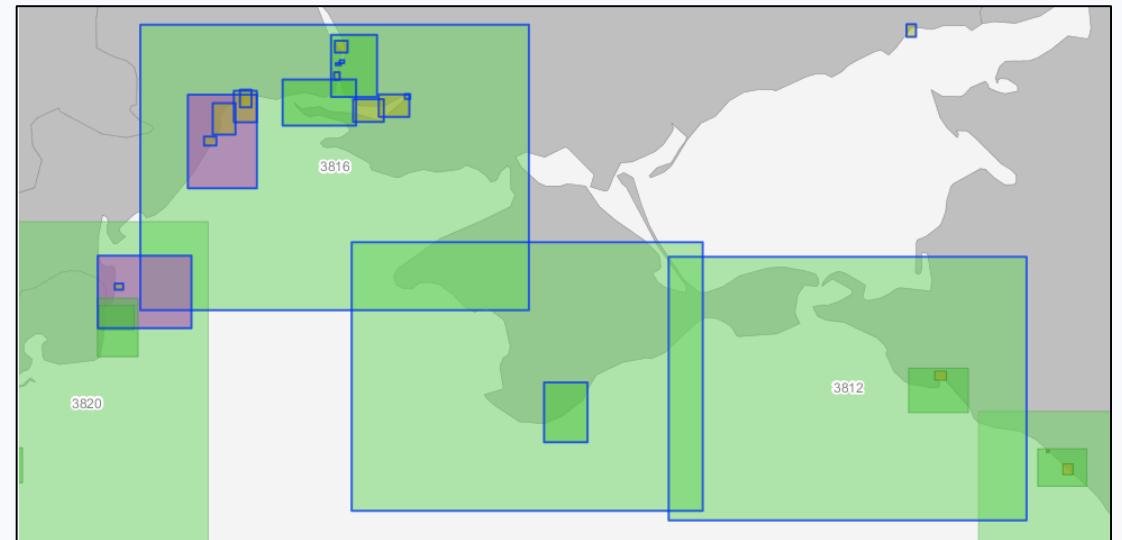
International  
Hydrographic  
Organization

BASWG15  
VTC, 11 May 2021

# INT Charts Updates - UA

- Request from UA to update INT Charts catalogue (eg. New Editions)
- All schemed charts in the INTToGIS are produced

<b>3890</b>	Ochakiv to Pivdennyi Buh River (pending by IHO)
<b>3891</b>	Approaches to Odesa, Chornomorsk and Pivdennyi Ports
<b>3816</b>	Zmiinyi Island to Tarkhankut Cape
<b>3887</b>	Approaches to Pivdennyi Port
<b>3889</b>	Pivdennyi Port
<b>3893</b>	Approaches to Odesa Port
<b>3884</b>	Mykolaiv Port



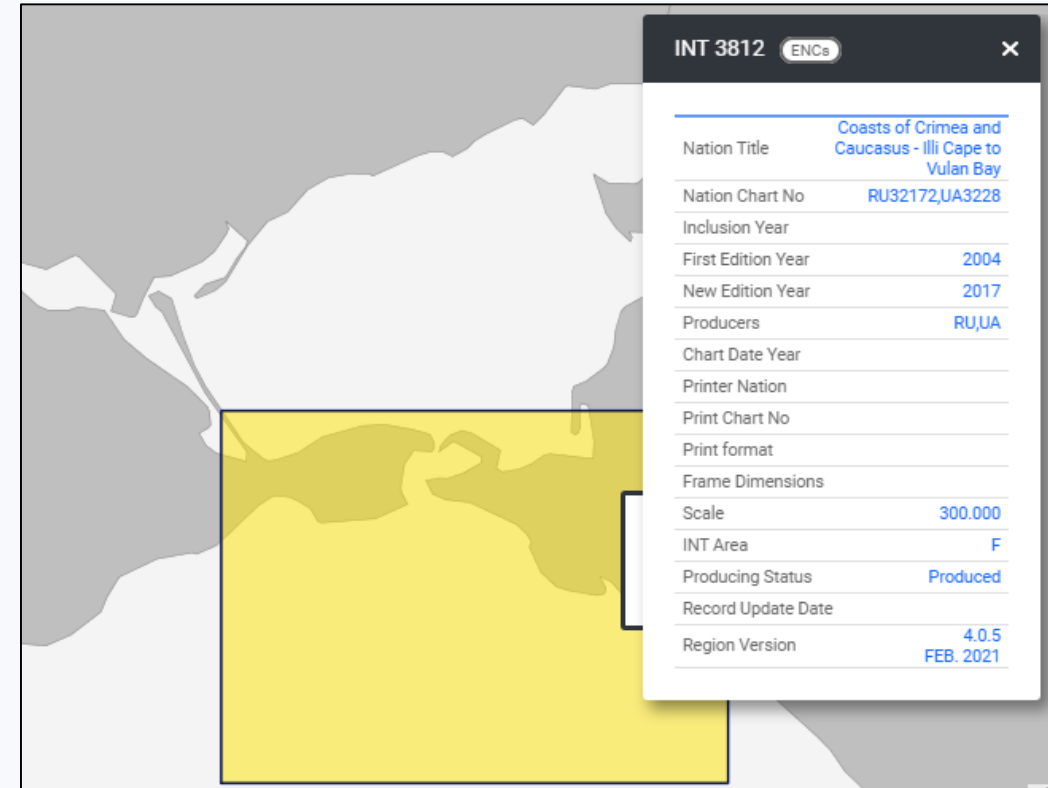
**IHO**

International  
Hydrographic  
Organization

BASWG15  
VTC, 11 May 2021

# INT Charts – pending activities UA-RF

- **INT3812** (Agreed INT Scheme)  
(BASWG14/03 – RF to inform about the status of INT 3812 to RCC and BASWG Chair)
- Should be co-produced by RF (RU32172) and UA (UA3228)
- BASWG14: UA reported that the co-production is not effective
- UA reissued the INT3812 chart in Sept. 2017 (First Edition 2004)
- No information received from RU-UA
- Any progress or updates?



Scale 1 : 300 000 – No higher scale available



IHO

International  
Hydrographic  
Organization

BASWG15  
VTC, 11 May 2021

# INT Charts – pending activities UA-RF

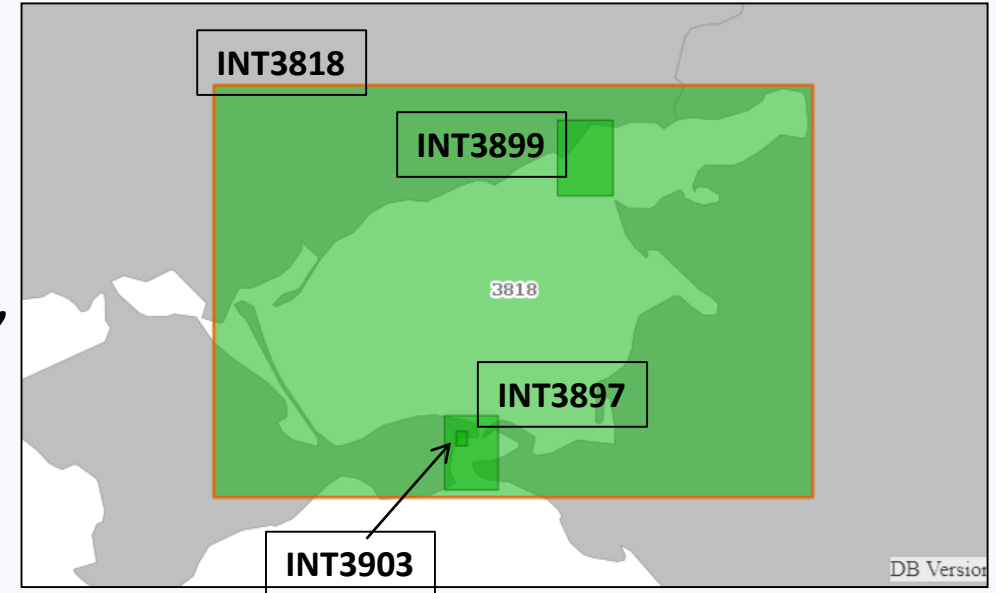
Requests from UA to produce 4 INT Charts

3818	Sea of Azov	New
3897	Kerchenska Strait	New
3899	Approaches to Mariupol Port	New
3903	Kerch Port	New

(BASWG14/12 – RCC to clarify the status of the production)

Currently not assigned on INTToGIS, **no updates** received, from RF & UA on these 4 charts on the **last 5 years**

MBSHC21: these charts submitted by UA in INTToGIS should be left pending until UA and RF REACH an agreement



**Proposed Action: UA and RF to liaise and reach an agreement**



IHO

International  
Hydrographic  
Organization

BASWG15  
VTC, 11 May 2021



# INT Charts – pending activities GE

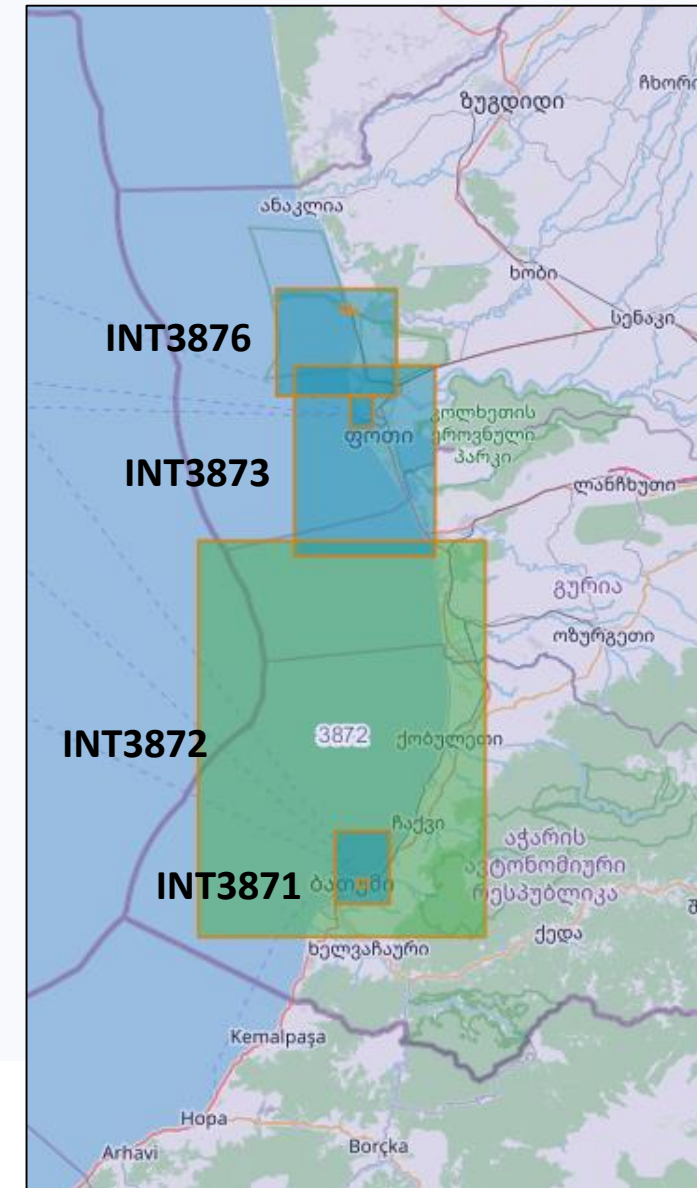
- According to INTToGIS INT charts 3871, 3872, 3873 and 3876 are schemed

## MBSHC22 – GE National Report

**3.2 National paper charts**

The following paper charts have been published. The datum in all charts is WGS84.

INT_NO	PROD	NAT_NO	SCALE 1:	MAIN_TITLE	CHART_LIMITS			
					LIMIT_S	LIMIT_N	LIMIT_W	LIMIT_E
3871	GE	GE 101	10 000	BATUMI PORT WITH APROACHES	41°37.60'N	41°42.39'N	41°36.57'E	41°41.40'E
			5 000	A- BATUMI PORT	41°38.70'N	41°39.18'N	41°38.53'E	41°39.50'E
3872	GE	GE 102	50 000	GEORGIAN COAST FROM RIVER SUPSA TO RIVER TSOROKHI	41°35.40'N	42°01.50'N	41°24.50'E	41°49.83'E
3873	GE	GE 103	25 000	POTI PORT WITH APROACHES	42°00.50'N	42°12.98'N	41°33.00'E	41°45.40'E
			10 000	A-POTI PORT	42°08.90'N	42°10.98'N	41°37.88'E	41°39.92'E
3876	GE	GE 104	20 000	KULEVI PORT WITH APROACHES	42°11.00'N	42°18.00'N	41°31.40'E	41°42.00'E
			5 000	A- PORT KULEVI	42°16.38'N	42°16.60'N	41°37.78'E	41°38.54'E
			5 000	B- CHANEL KULEVI	42°16.50'N	42°17.00'N	41°37.10'E	41°37.86'E



Is there the need to update the INTToGIS? (Action?)



IHO

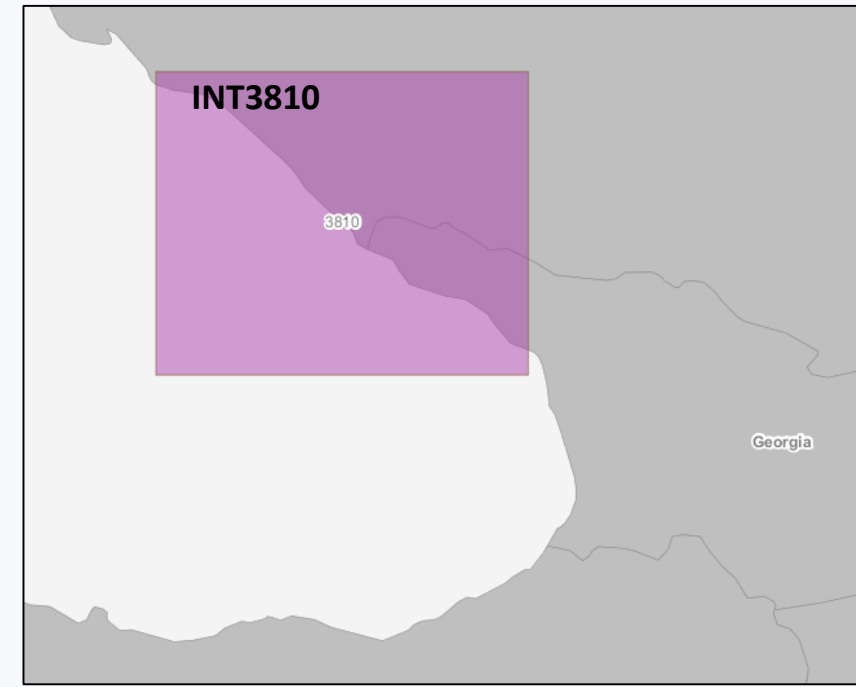
International Hydrographic Organization

# INT Charts – pending activities GE-RF

Requests from GE to produce **INT3810** (BASWG 13/05)

3810	Caucasian coast. Bukhta Vulcan to Port Ochamchira	Modify
------	---	--------

- INT3810 is currently produced by RF (RU 32173)
- BASWG13 : It was agreed that GE to liaise with RU regarding co-production of INT3810 and INT3875 and report back to the Region F ICC until the next MBSHC meeting
- BASWG14 : GE reports no progress towards a co-production of this chart
- MBSHC21 : no agreement between RU e GE



Scale 1:300 000

Action N°	Action	Responsible	Update
MBSHC21/33 (BASWG14/10)	RU and GE to work on an agreement for the co-production of INT3810 and report to the Region F ICC	RU and GE	<i>Any update?</i>



IHO

International  
Hydrographic  
Organization

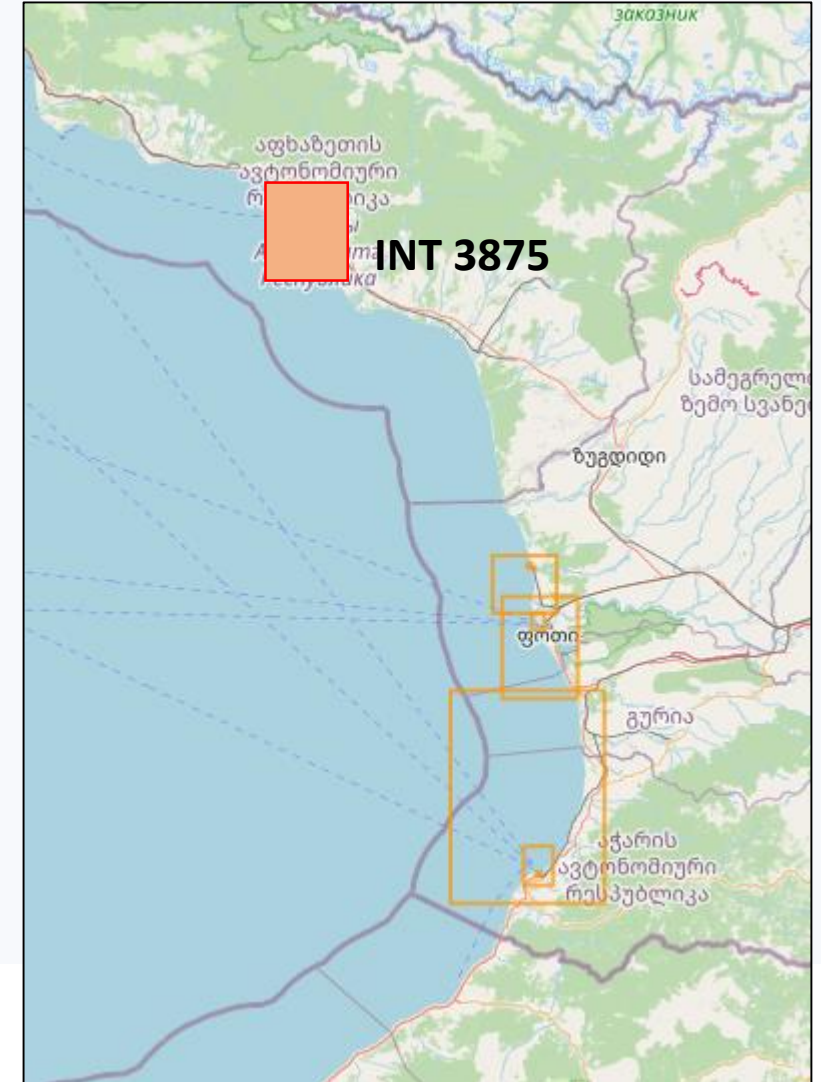
BASWG15  
VTC, 11 May 2021

# INT Charts – pending activities GE-RF

- Request from GE to produce the INT chart covering **Soukhumi port** with Approaches (GE108) (BASWG13/05)
- 2009 : MBSHC19, RF proposed to abort producing this chart due to lack of information
- BASWG recommended to wait until GE is a full IHO member to achieve the transfer
- 2015 : GE became an IHO Member
- 2016 : Region F IRCCWG CL 01/2016, RF objected to the transfer of production to GE
- Due to lack on consensus on this chart, **INT3875** is currently not assigned

MBSHC21 RCC view is that INT3875 should not be inserted in the INT scheme of the region

**GE is still interested to produce the chart? Any comment?**



**IHO**

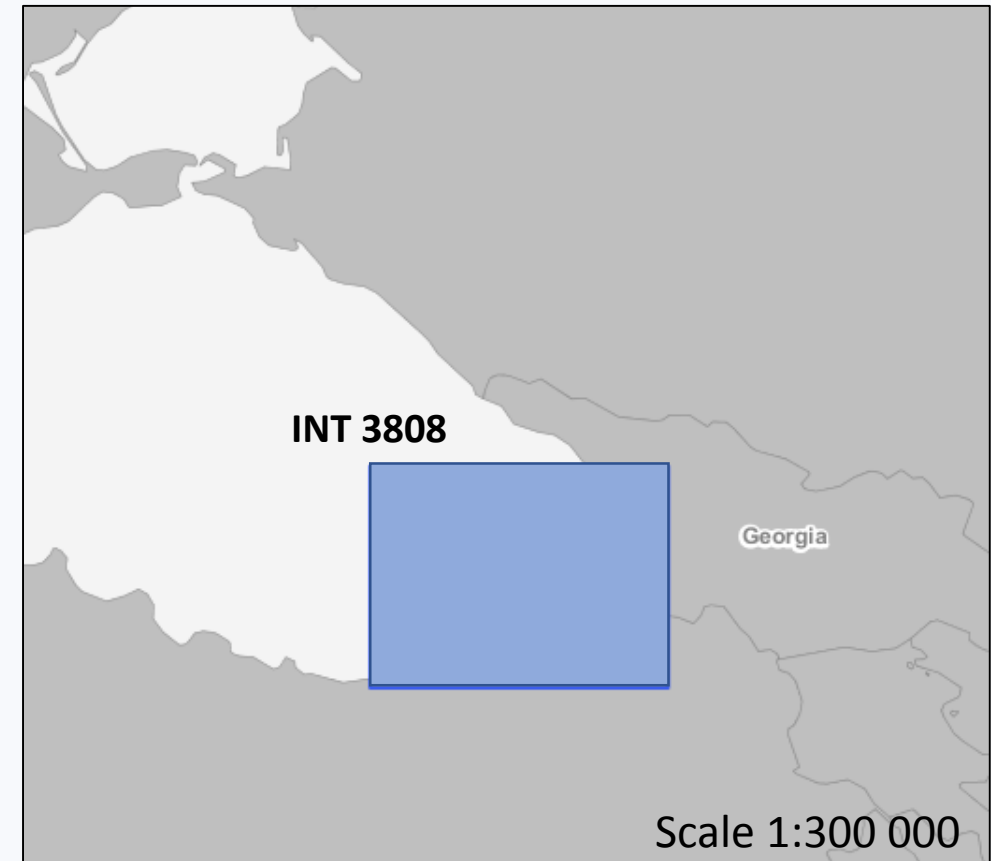
International  
Hydrographic  
Organization

BASWG15  
VTC, 11 May 2021

# INT Charts – pending activities GE-TR-RF

## Co-production of INT3808 (BASWG13/06)

- RF printer with new information from recent surveys to be passed (repromats) to co-producers TR/GE
- MBSHC21: RF issued a New Edition of INT3808 in 2019 (see RF National Report)
- **MBHSC 21: RF agreed to provide TR and GE with repromats of their updated chart corresponding to INT3808 together with updating information for the corresponding ENC TR2000014 (see also ICCWG5 Minutes)**



3808

Port Ochamchira to Port Tirebolia



IHO

International  
Hydrographic  
Organization

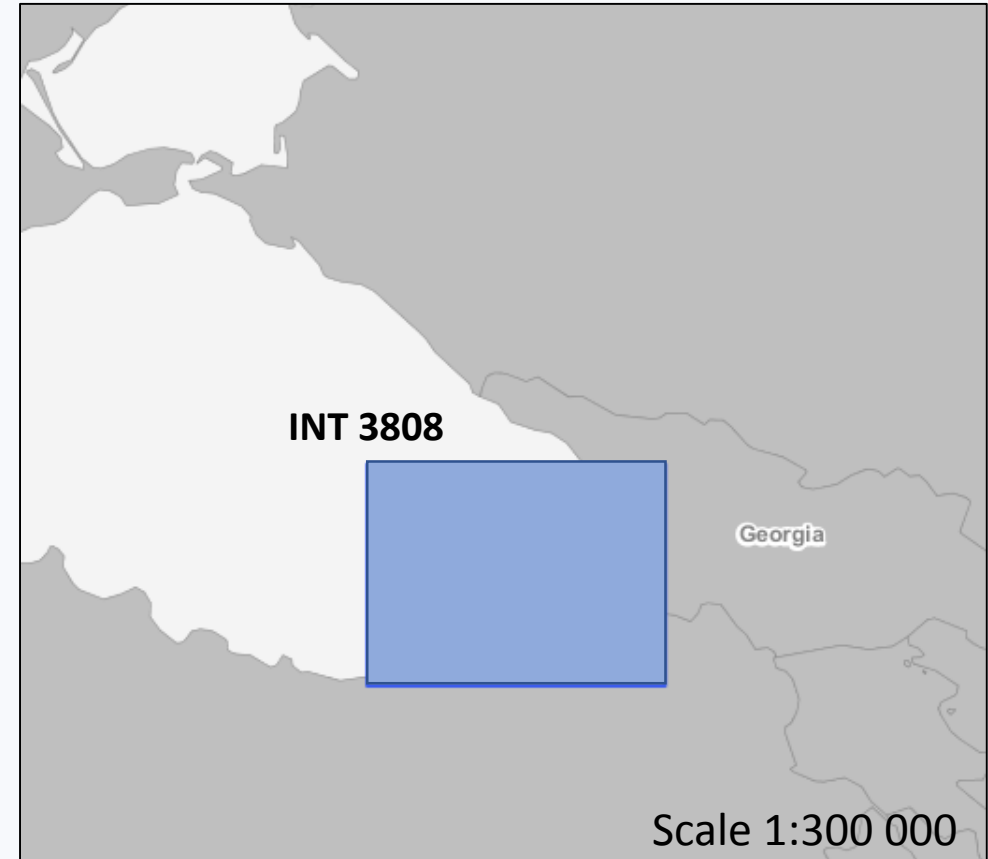
BASWG15  
VTC, 11 May 2021

# INT Charts – pending activities GE-TR-RF

## Co-production of INT3808 (BASWG13/06)

Action N°	Action	Responsible	Update
MBSHC21/34 (BASWG14/07)	RU to provide assigned producers (TR and GE) with repromats of their updated charts coresponding to INT3808 and with updating information for ENC TR200014	RU	<i>Any update?</i>

*Proposed Action: GE & TR are invited to update INTToGIS metadata once the chart will be finalized and to send a copy to the Region F ICC.*



**3808**

Port Ochamchira to Port Tirebolia



**IHO**

International  
Hydrographic  
Organization

BASWG15  
VTC, 11 May 2021

# Other Region F ICC WG activities

Action N°	Action	Responsible	Update
MBSHC21/28 (BASWG14/16)	MS to use the IHO online port database to update their port priority list and report to the Regional Charting Coordinator (RCC).	All	Updates received from UA

- NGA si working to update the Port List together with the IHO
- MBSHC21 inputs about port list not applied yet

*Action: Update the port list*

Action N°	Action	Responsible	Update
MBSHC21/25 (BASWG14/17)	Member States and Associate members to ensure that the information on any requirements for <b>ECDIS back-up arrangements</b> using paper charts have been posted on the IHO website, and to update or give confirmation of no change at least once a year.	All	No updates received

- List to be provided by: BU, GE, TR
- No updates received: RU, RO, UA

*Action: to provide the list or update it*

<https://iho.int/en/backup-paper-charts-0>

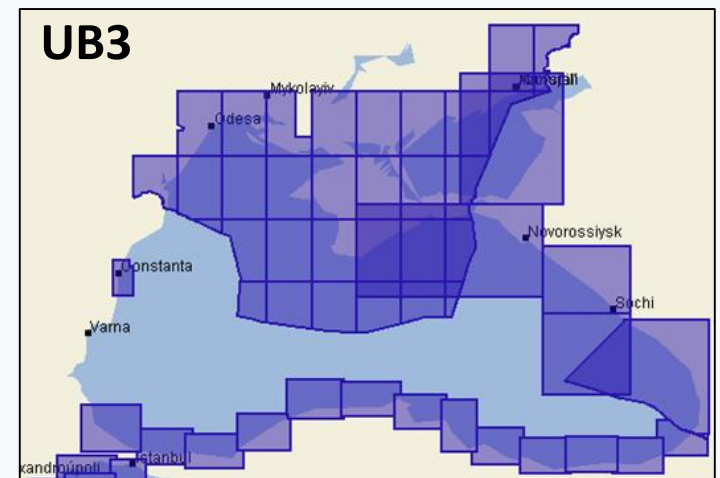
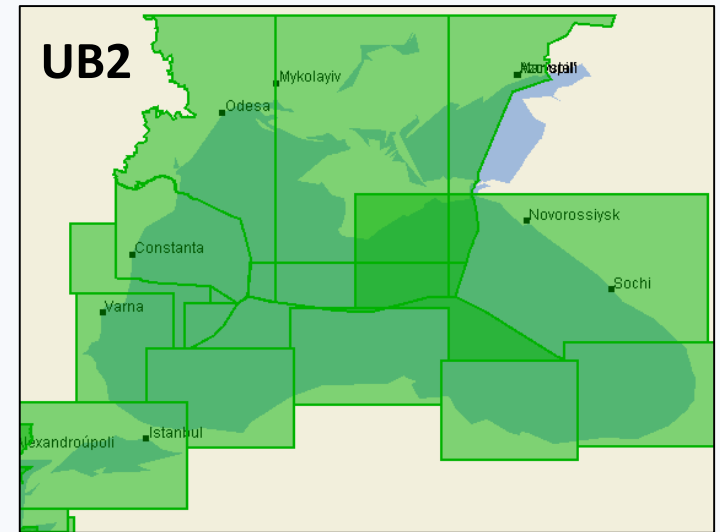
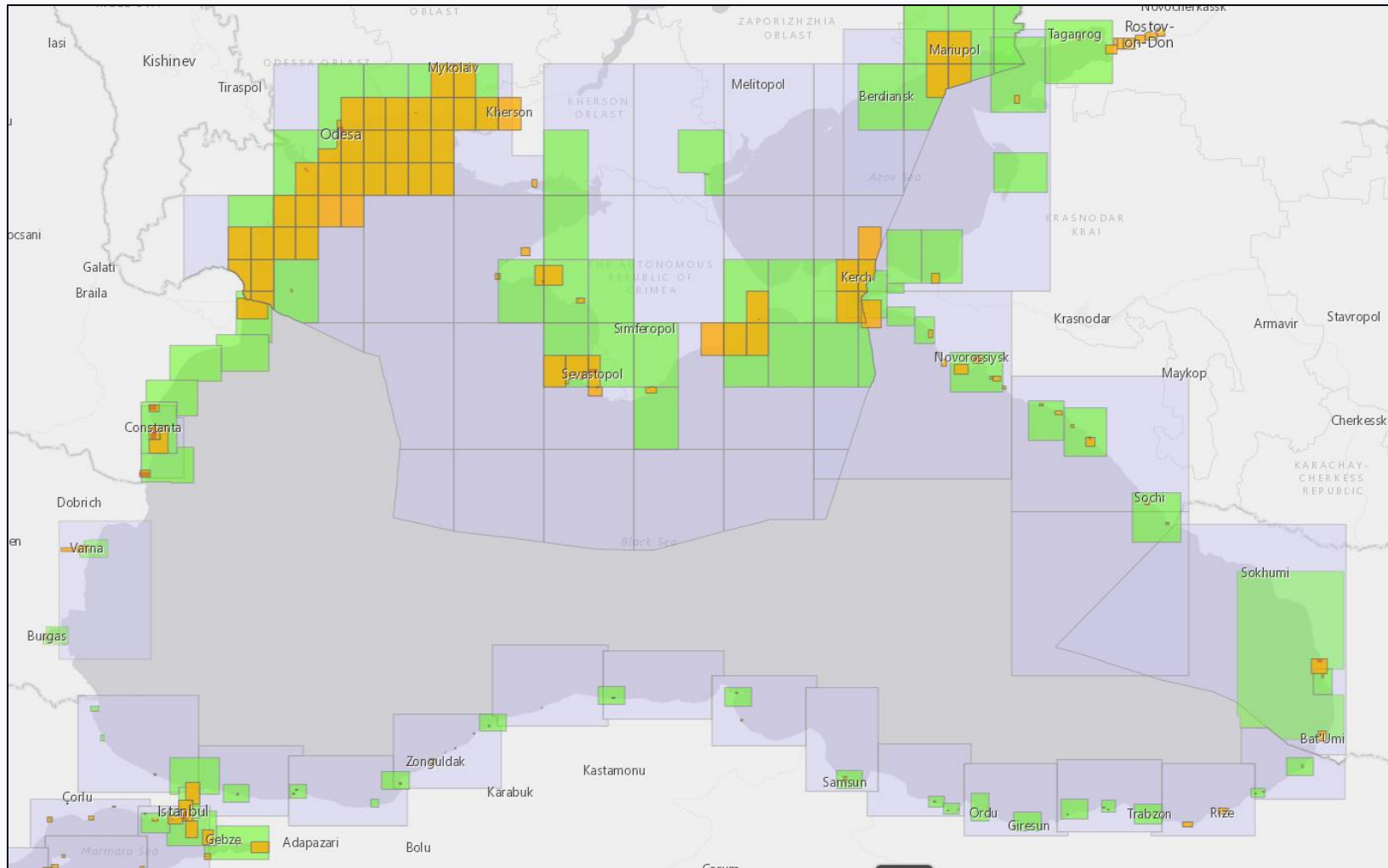


**IHO**

International  
Hydrographic  
Organization

BASWG15  
VTC, 11 May 2021

# Status of ENC's coverage



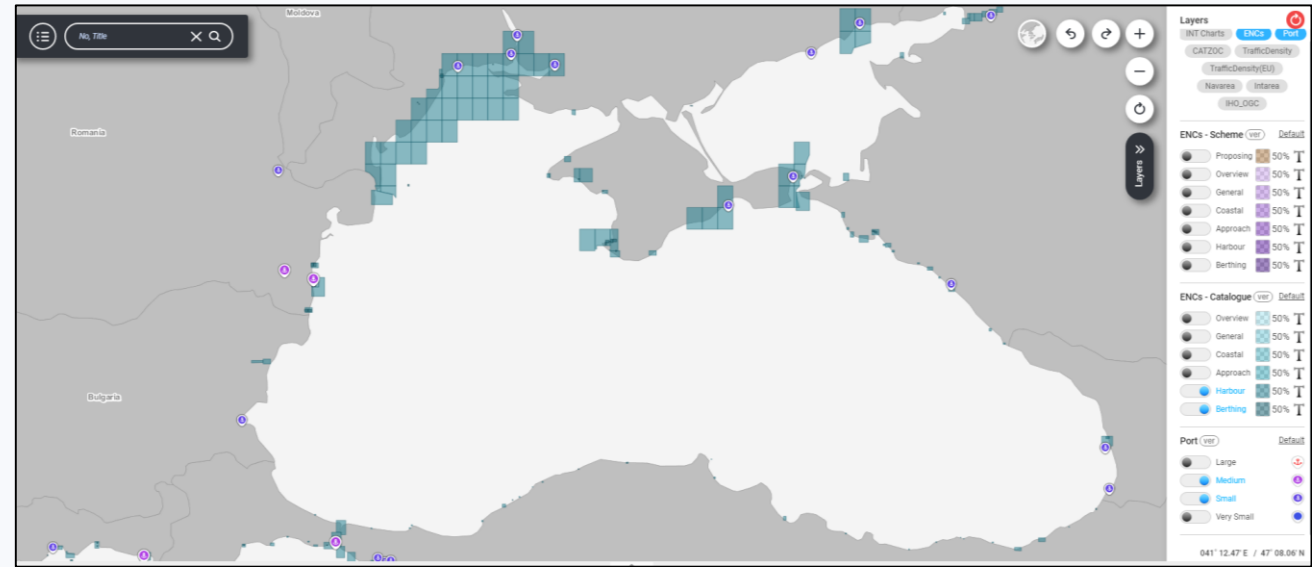
IHO

International  
Hydrographic  
Organization

BASWG15  
VTC, 11 May 2021

# Status of ENCs - Coverage

- **UB1 and UB2** coverage considered as **completed**
- **UB3** coverage **with gaps** on the Western part of the Black Sea



- **UB4/5/6** : NGA World Port Index (Pub150) covered – additional ports to add through MSs analysis

*Proposed Action: MSs to provide RCC with their ENC production plan for UB 4-5-6 (see BASWG14/18)*



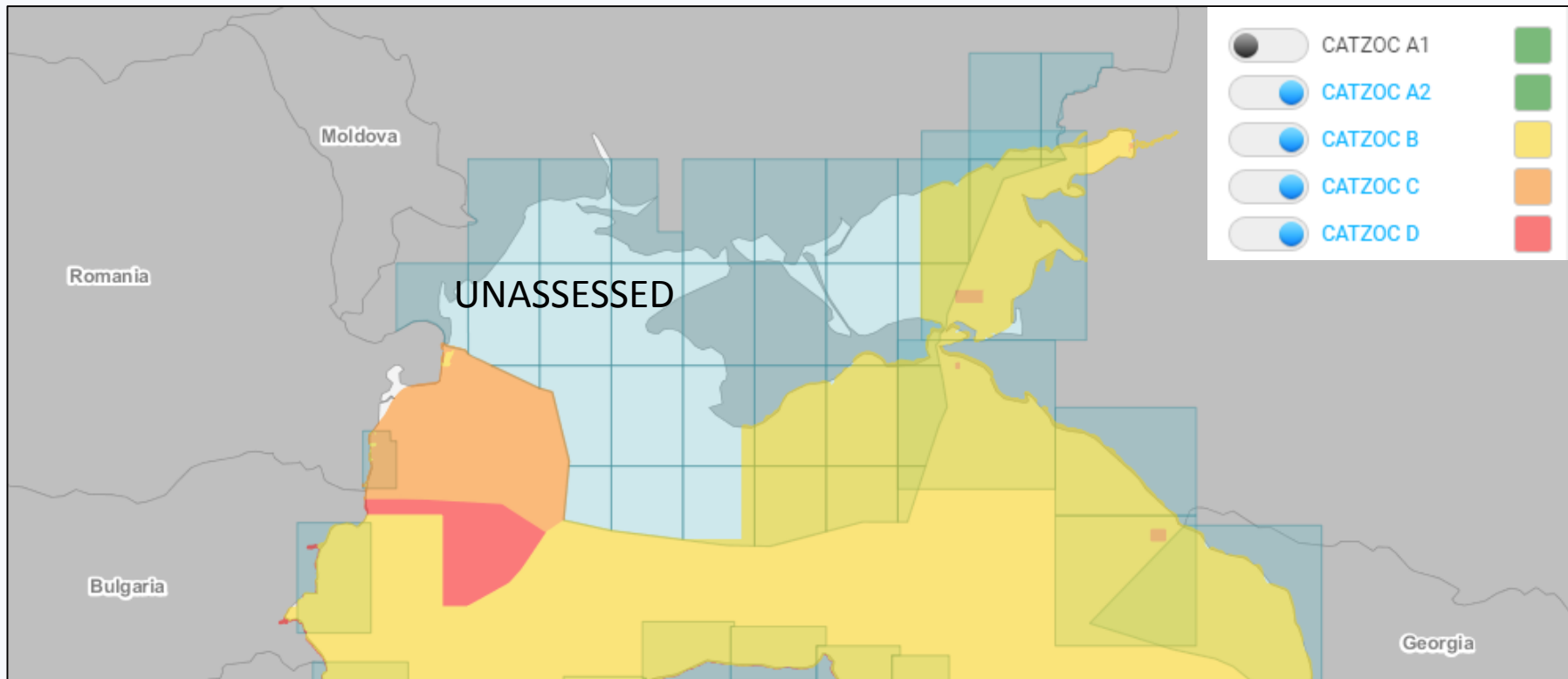
**IHO**

International  
Hydrographic  
Organization

BASWG15  
VTC, 11 May 2021



# Status of ENC's "Quality" - CATZOC



Action N°	Action	Responsible	Update
MBSHC21/22 (recomandation BASWG14/01)	MS are encouraged to populate the CATZOC values (1 to 5) of their ENC cells	All	<i>Any update? Comments?</i>



IHO

International  
Hydrographic  
Organization

BASWG15  
VTC, 11 May 2021

# Status of ENC's - overlap

Action N°	Action	Responsible	Update
<b>MBSHC21/27</b>	Concerned MSs to <b>liaise bilaterally</b> to resolve ENC overlappings, keeping the MBSHC Chair informed.	ALL	Little progress noted.
<b>MBSHC21/30</b> <b>(BASWG14/13)</b>	<b>RENCs to provide a template report</b> in order to collect the evaluation of risk level on ENC overlaps from the MS in the frame of the WENDWG risk assessment.	RENCs	Latest version sent to all ICCWG Members – <b>e-mail Region F coordinator 23rd February 2021</b>
<b>MBSHC21/31</b> <b>(BASWG14/14)</b>	MS to use the RENCs' template report to <b>provide the RCC</b> with: <ul style="list-style-type: none"> <li>- <b>evaluation of risk level</b> on the most critical ENC overlaps based on the IC-ENC risk assessment regional database (level: MEDIUM);</li> <li>- <b>their views and comments</b> on the IC-ENC risk assessment methodology.</li> </ul>	All	Feedback received from UA



**IHO**

International  
Hydrographic  
Organization

BASWG15  
VTC, 11 May 2021

# Status of ENCs – overlap

**IHO Resolution 1/2018** – *Elimination of overlapping ENC data in areas of demonstrable risk to the safety of navigation*

<b>Elimination of overlapping ENC data in areas of demonstrable risk to the safety of navigation</b>	<b>1/2018</b>	<b>IHO CL 19/2018</b>	
--	---------------	-----------------------	--

1. It has been reported that overlapping ENC data, when used in ECDIS equipment, may lead to unpredictable behaviour in at least the following cases:
  - overlapping data occurring in the same usage band (Navigational Purpose);
  - overlapping data occurring in ENC cells in different usage bands (Navigational Purposes) but using the same compilation scale.



**IHO**

International  
Hydrographic  
Organization

BASWG15  
VTC, 11 May 2021

# Status of ENCs – overlap

---

- Region F Charting Coordinator reports to ENC producers these “highest” risk **overlapping** cases in accordance with IHO resolution 1/2018
- MSs → IDENTIFY – PREVENT – RESOLVE (demonstrable risk)
- ENC producers are reminded, in accordance with WEND principles, that all overlaps must be resolved
- Dialogue between parties involved must be strengthened



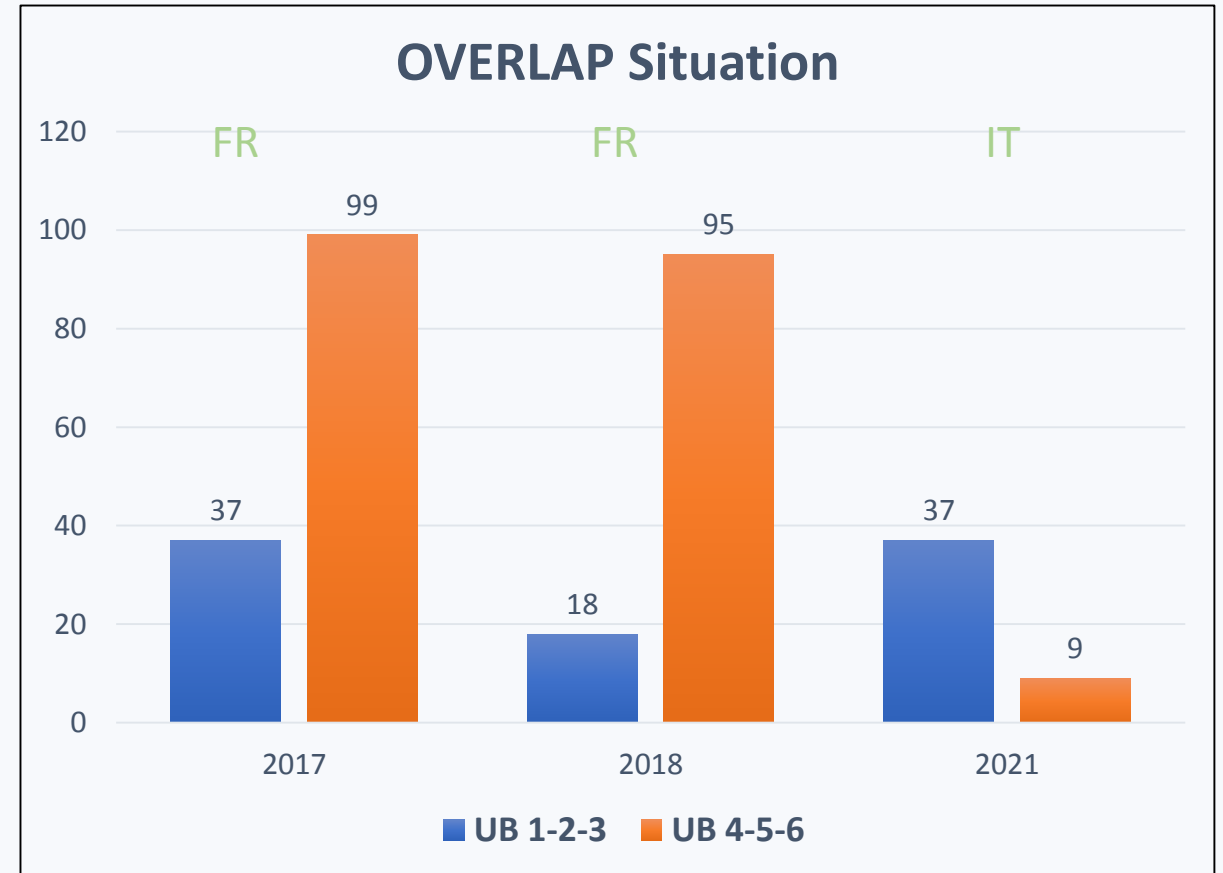
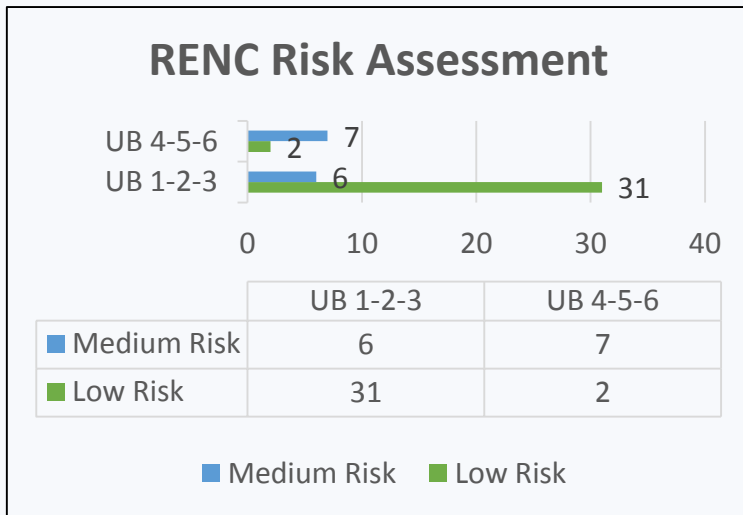
IHO

International  
Hydrographic  
Organization

BASWG15  
VTC, 11 May 2021

# Status of ENC's - overlap

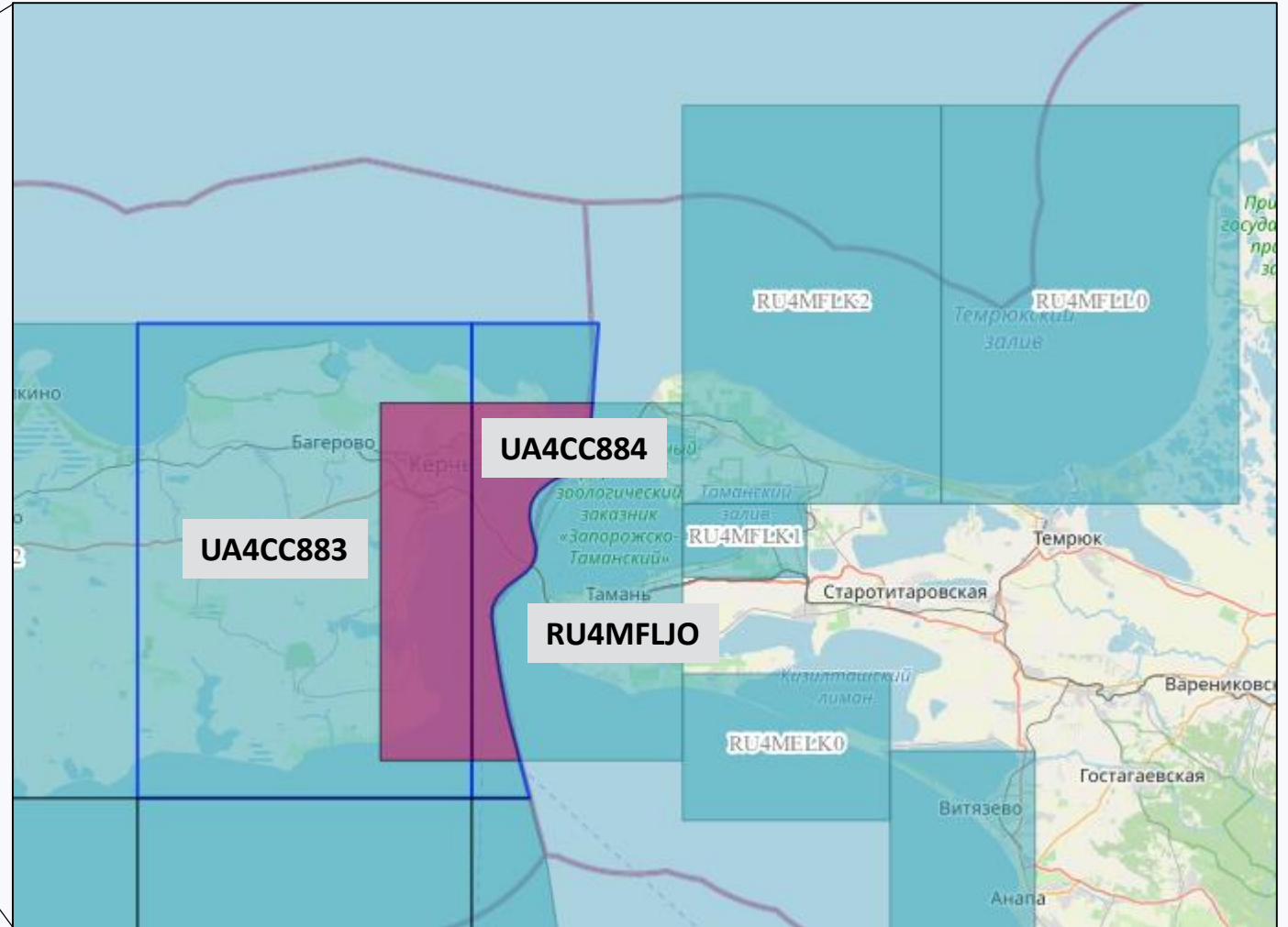
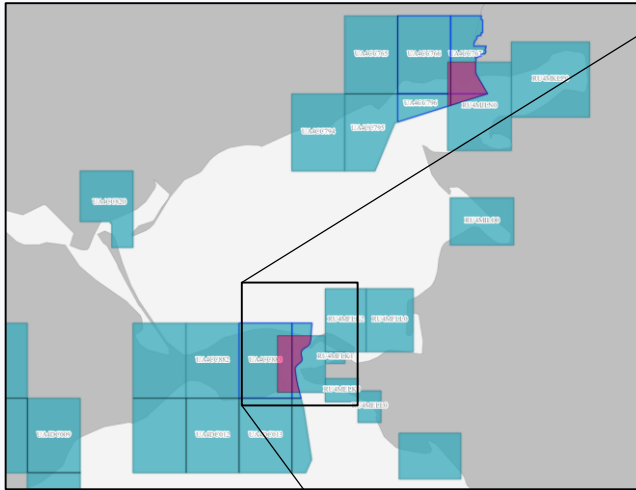
- Significant reduction overlaps UB 4-5-6
- Consistency of results between RENCs (PRIMAR 2017-2018 / IC-ENC 2021)



**IHO**

International  
Hydrographic  
Organization

# Status of ENC's – overlap risk assessment UB 4



**Highest risk case :**

RU4MFLJO & UA4CC883

RU4MFLJO & UA4CC884

IC-ENC Risk analysis → **Medium**



**IHO**

International  
Hydrographic  
Organization

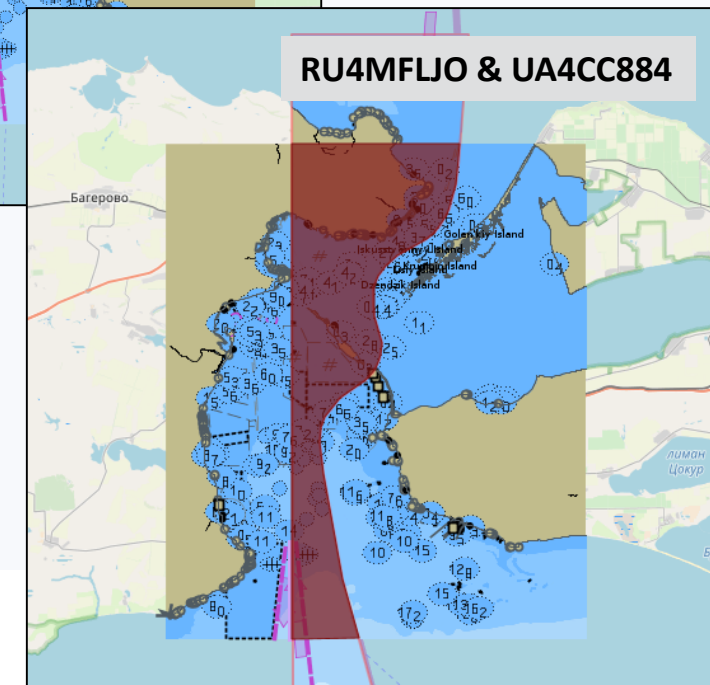
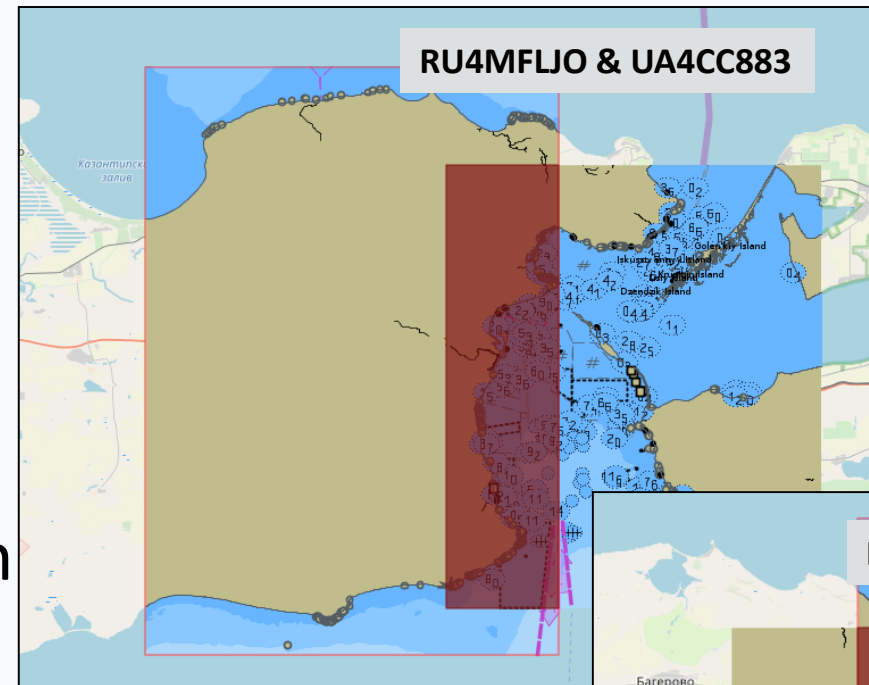
# Status of ENCs – overlaps risk assessment UB 4

## Highest risk case :

RU4MFLJO & UA4CC883

RU4MFLJO & UA4CC884

- IC-ENC Risk analysis → **Medium**
- Critical location of the overlap (main route through Kerch Straits & anchorage areas)
- up to 100% overlap
- Action: to be resolved



IHO

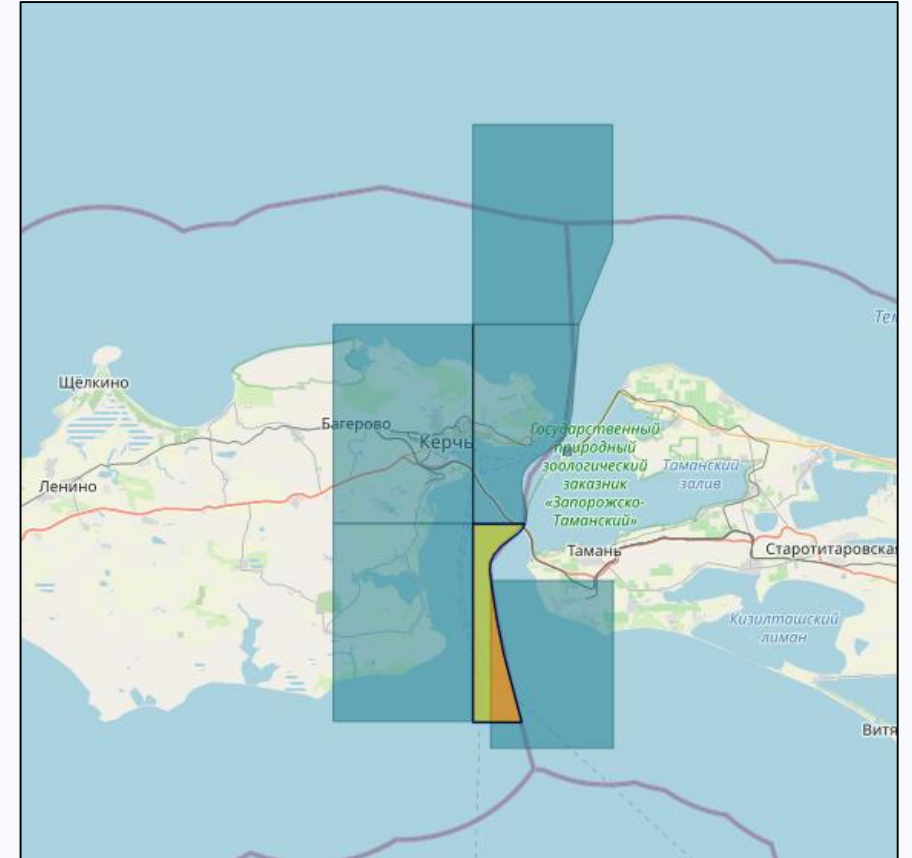
International  
Hydrographic  
Organization

# Status of ENC's – overlaps risk assessment UB 5

## Highest risk case :

RU5MELJ0 & UA5ECM39

- IC-ENC Risk analysis → **Medium**
- Critical location of the overlap (main route through Kerch Straits & anchorage areas)
- Inconsistencies between overlapping cells
- Up to 100% overlap
- Action: to be resolved



**IHO**

International  
Hydrographic  
Organization

BASWG15  
VTC, 11 May 2021

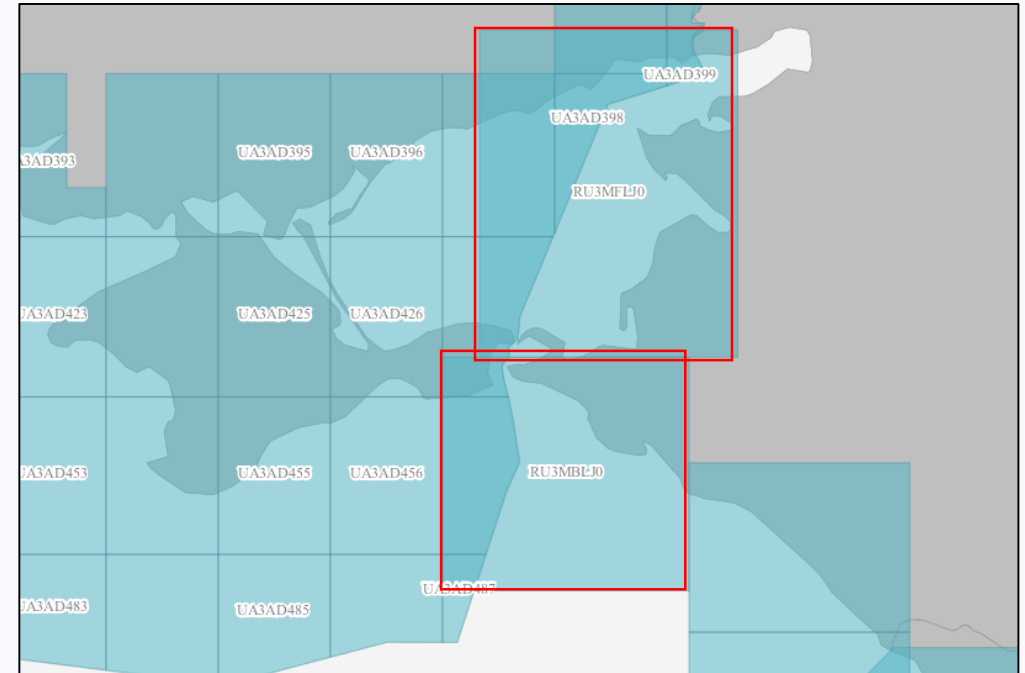


# Status of ENC's – overlaps risk assessment UB 3

## Highest risk case

- IC-ENC Risk analysis → **Medium**
- Critical location of the overlap (main route through Kerch Straits & anchorage areas)
- Up to 100% overlap
- Action: to be resolved

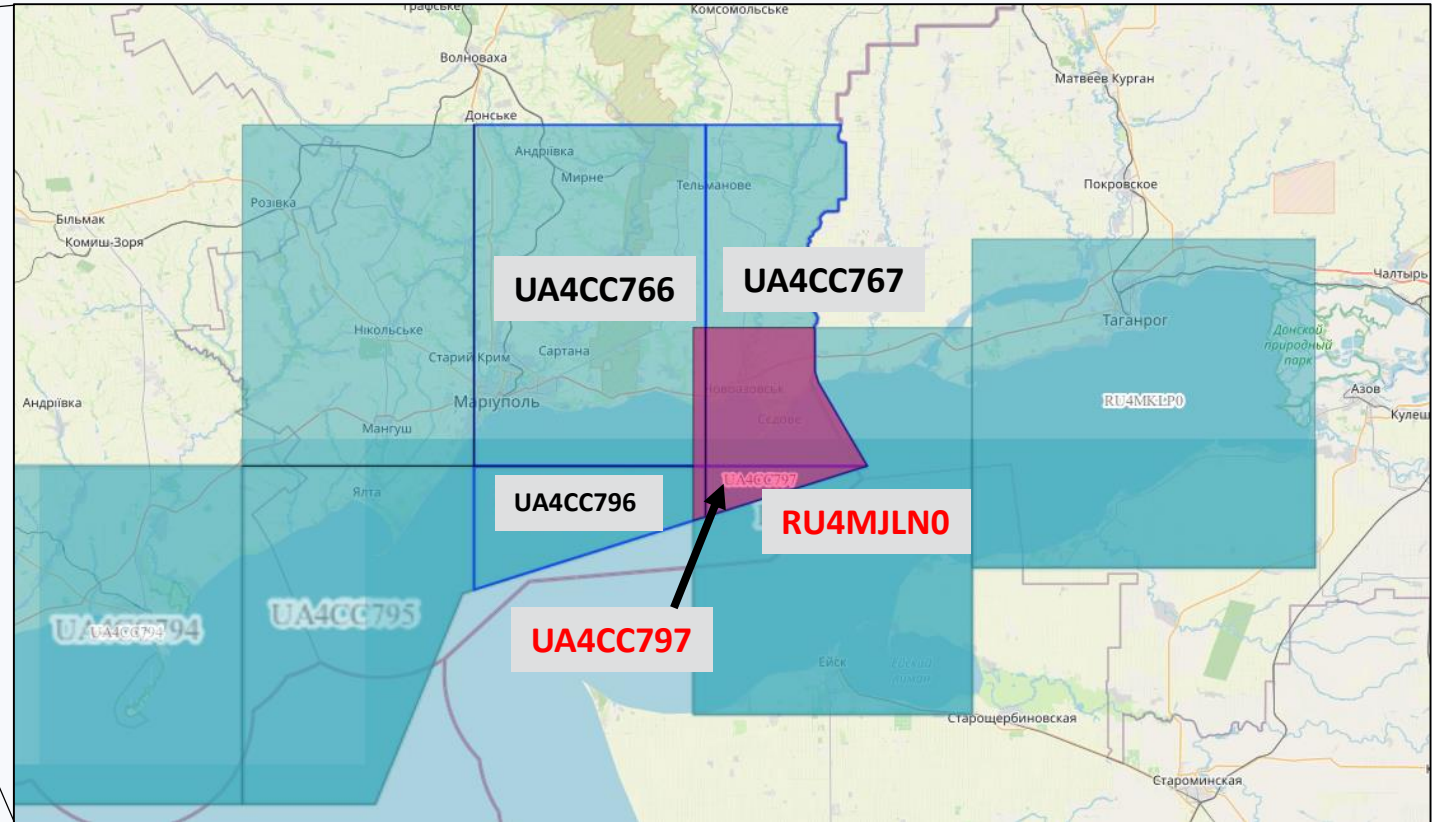
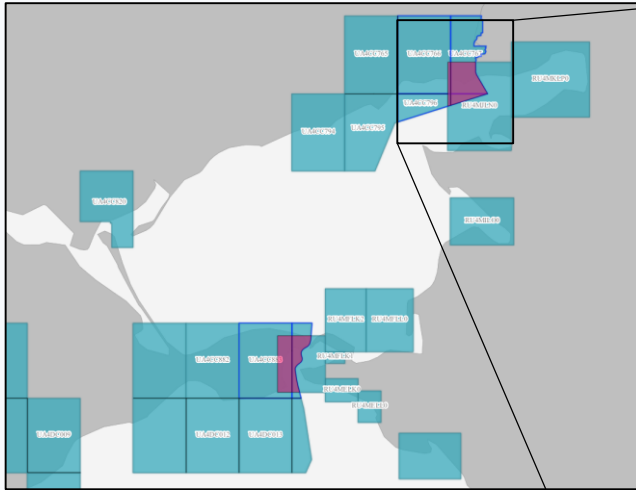
RU3MBLB0	UA3AD455
RU3MBLB0	UA3AD456
RU3MBLJ0	UA3AD427
RU3MFLJ0	UA3AD397
RU3MFLJ0	UA3AD398
RU3MFLJ0	UA3AD427



IHO

International  
Hydrographic  
Organization

# Status of ENC's – overlap risk assessment UB 4



**RU4MJLNO & UA4CC796 & UA4CC797  
& UA4CC767**

- Up to 100% overlap
- Action: to be resolved
- IC-ENC Risk analysis → **Low** (includes a busy traffic area. Content is consistent)



**IHO**

International  
Hydrographic  
Organization

BASWG15  
VTC, 11 May 2021

# Final considerations

---

- **What priorities for the BASWG and the ICCWG?**
  - Continue updating the INT chart scheme or freeze the current scheme?
  - Full implementation of the ENC scheme?
  - Promotion of the S-100 series?
- **Increase bilateral cooperation** to solve ENCs overlaps and discrepancies in the INT charts scheme
- **Increase quality** of bathymetric data (CATZOC) through joint efforts and capacity building activities



**IHO**

International  
Hydrographic  
Organization

BASWG15  
VTC, 11 May 2021

# Action requested

---

- Take note of the RCC report for the Black & Azov Seas
- Encourages BASWG MS to provide their national chart catalogue (online access preferably) to the RCC and the IHO Secretariat
- Encourage BASWG MS to use INTToGIS to update their INT chart information and to submit new proposals
- Encourage BASWG MS to provide RCC with their ENC production plan for UB4-5-6
- Encourage BASWG ENC producers concerned to liaise bilaterally to resolve ENC overlaps
- Request BASWG to register that “highest” risks have been reported to ENC producers (in accordance with IHO resolution 1/2018) and to report to MBSHC



IHO

International  
Hydrographic  
Organization

BASWG15  
VTC, 11 May 2021

# Action requested

---

- Request BASWG ENC producers to provide information on ECDIS back-up arrangements
- Encourage BASWG ENC producers to populate the CATZOC values of their ENCs
- Encourage BASWG MS to use the IC-ENC template report to provide the RCC with their evaluation of risk level on ENC overlaps
- Encourage BASWG MSs to be prepared to update their port priority list and report to the RCC



IHO

International  
Hydrographic  
Organization

BASWG15  
VTC, 11 May 2021