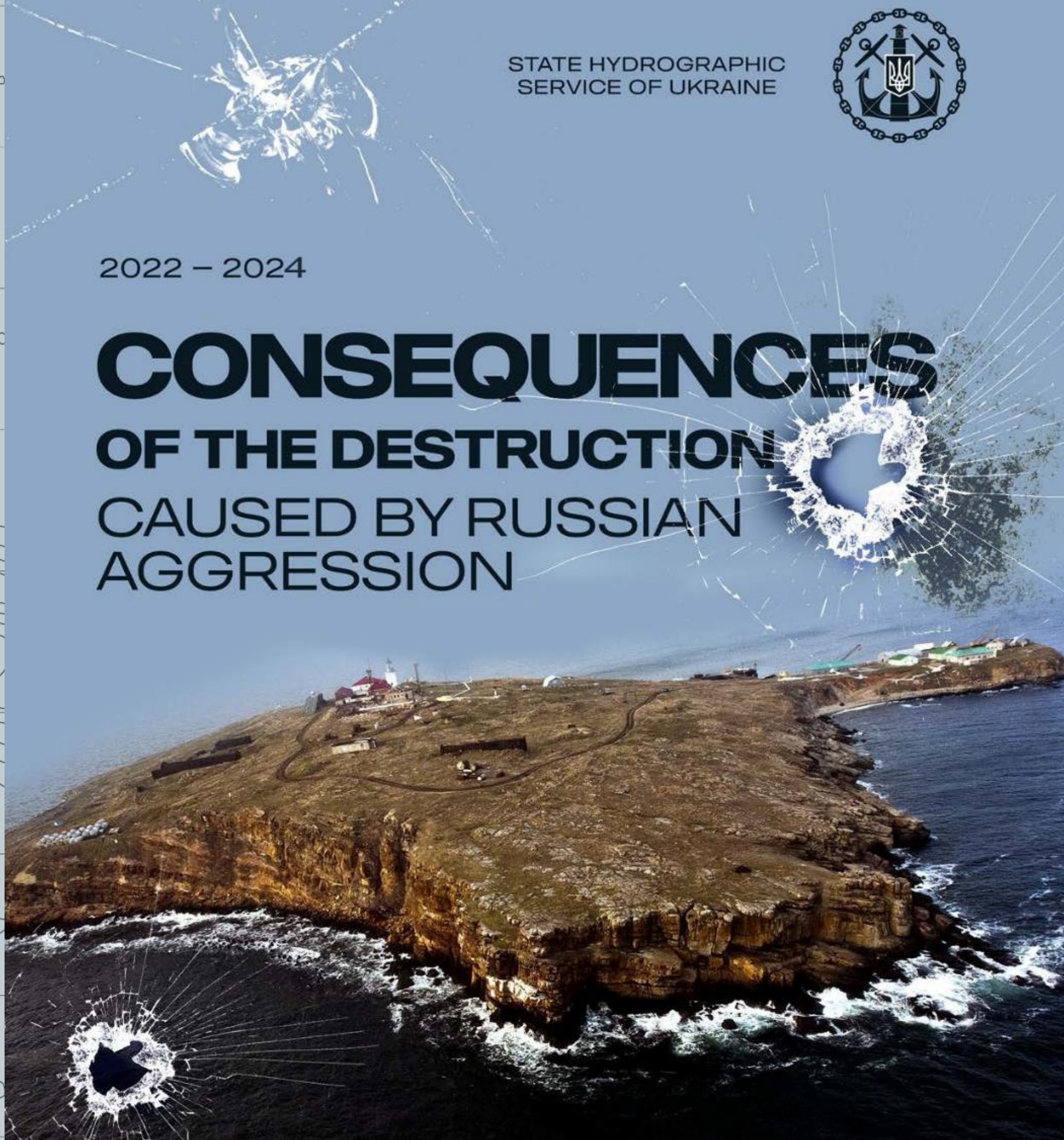


STATE HYDROGRAPHIC
SERVICE OF UKRAINE



2022 – 2024

CONSEQUENCES OF THE DESTRUCTION CAUSED BY RUSSIAN AGGRESSION





SHYROKYNE

MARIUPOL

MYKOLAIV

OCHAKIV

ODESA

KHERSON

ZATOKA

ZMIINYI ISLAND (SNAKE ISLAND)

SEA OF AZOV

BLACK SEA

MAP OF DESTRUCTION

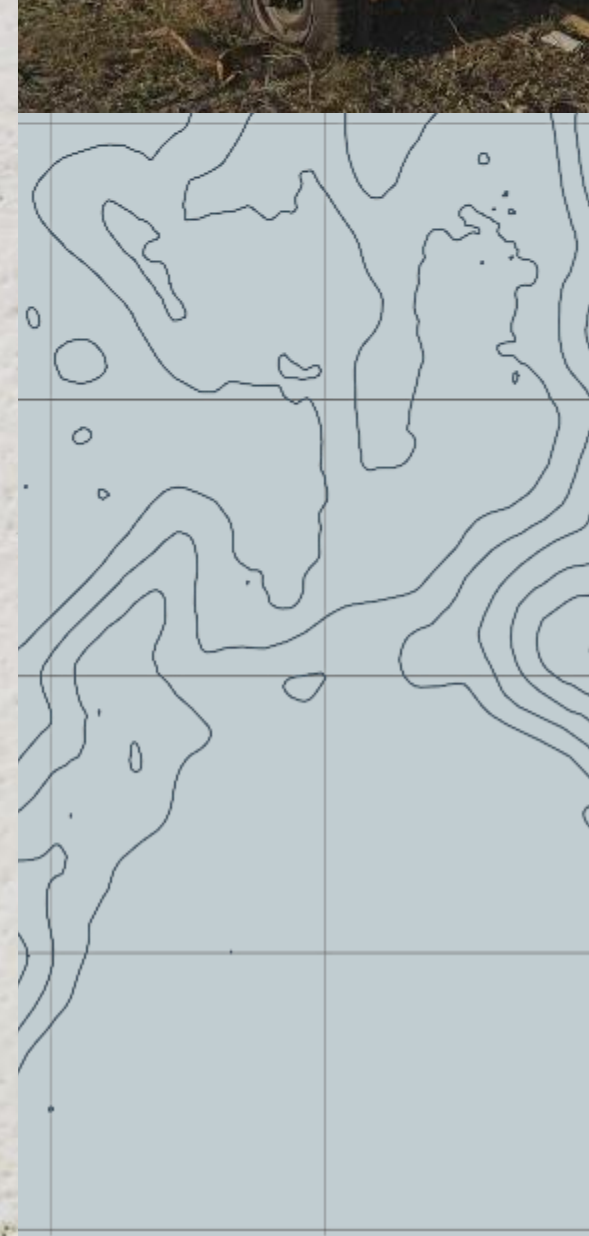
- ① Shyrokyne Lighthouse
- ② Zmiinyi Island (Snake Island)
- ③ Kherson Section
- ④ Berezansko-Ochakivske Elbow Rear Lighthouse
- ⑤ Mariupolskyi Middle Lighthouse
- ⑥ Ruskyi Lighthouse
- ⑦ Khablivskyi Rear Lighthouse
- ⑧ Khablivskyi Middle Lighthouse
- ⑨ Siversiv Rear Lighthouse
- ⑩ Dnipro-Lymanskyi Rear Mark
- ⑪ Stanislav-Adzhyholskyi Rear Lighthouse
- ⑫ Dnistrovsko-Tsarehradskyi Lighthouse
- ⑬ Kysliakivskyi Rear Lighthouse



**ZMIINYI
ISLAND
(Snake Island)**

KYSLIAKIVSKYI REAR Lighthouse

Serves to ensure shipping safety on the seventh elbow of the Buzko-Dniprovsko-Lymanskyi channel



The maintenance facility of the Kysliakivskyi lighthouse serves to meet its household needs

DNIPRO-LYMANSKYI REAR MARK

Serves to ensure shipping safety on
the third elbow of the Buzko-
Dniprovsko-Lymanskyi channel

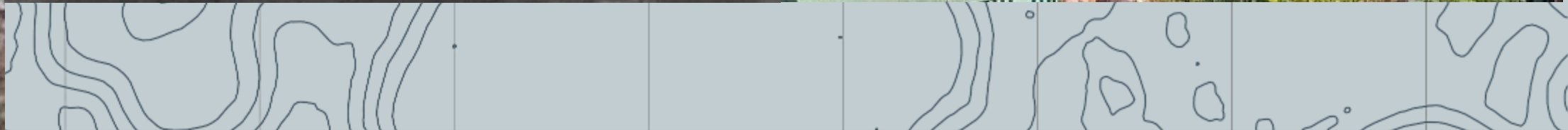
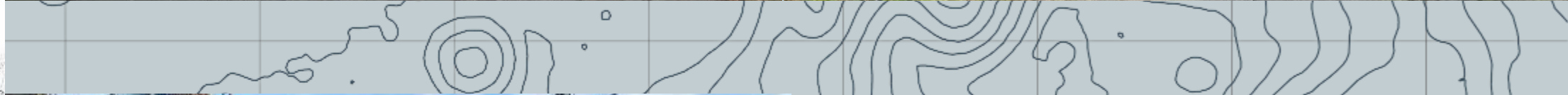


HEATING FACILITY OF THE DNIPRO-LYMANSKYI REAR MARK

Provides autonomous operation
of the lighthouse facility



MARIUPOLSKYI MIDDLE LIGHTHOUSE



HEATING FACILITY OF THE KHABLIVSKYI REAR LIGHTHOUSE



Serves for the household needs of the lighthouse staff, as well as for the backup diesel generators exploitation.

RESIDENTIAL HOUSE OF THE KHABLIVSKYI REAR LIGHTHOUSE

Serves as a residence for the lighthouse staff



TOWER OF THE KHABLIVSKYI MIDDLE LIGHTHOUSE

Serves to ensure shipping safety on
the sixth elbow of the
Buzko-Dniprovsko-Lymanskyi channel



RESIDENTIAL HOUSE OF THE KHABLIVSKYI MIDDLE LIGHTHOUSE

Serves as a residence for the
lighthouse staff



UTILITY ROOM AND GARAGE OF THE KHABLIVSKIY MIDDLE LIGHTHOUSE

Serve to meet the household
needs of the lighthouse staff



BEREZANSKO- OCHAKIVSKE ELBOW REAR LIGHTHOUSE

Serves to ensure shipping safety on the second elbow Buzko-Dniprovsko-Lymanskyi channel





**The Kherson
Section – the
Mykolaiv
Branch of the
SHSU**





The Kherson Section – the Mykolaiv Branch of the SHSU

The Kherson Section – the Mykolaiv Branch of the SHSU



STRYZHEN VESSEL

On 23rd August 2022, the Stryzhen motor vessel sank after a direct drone hit

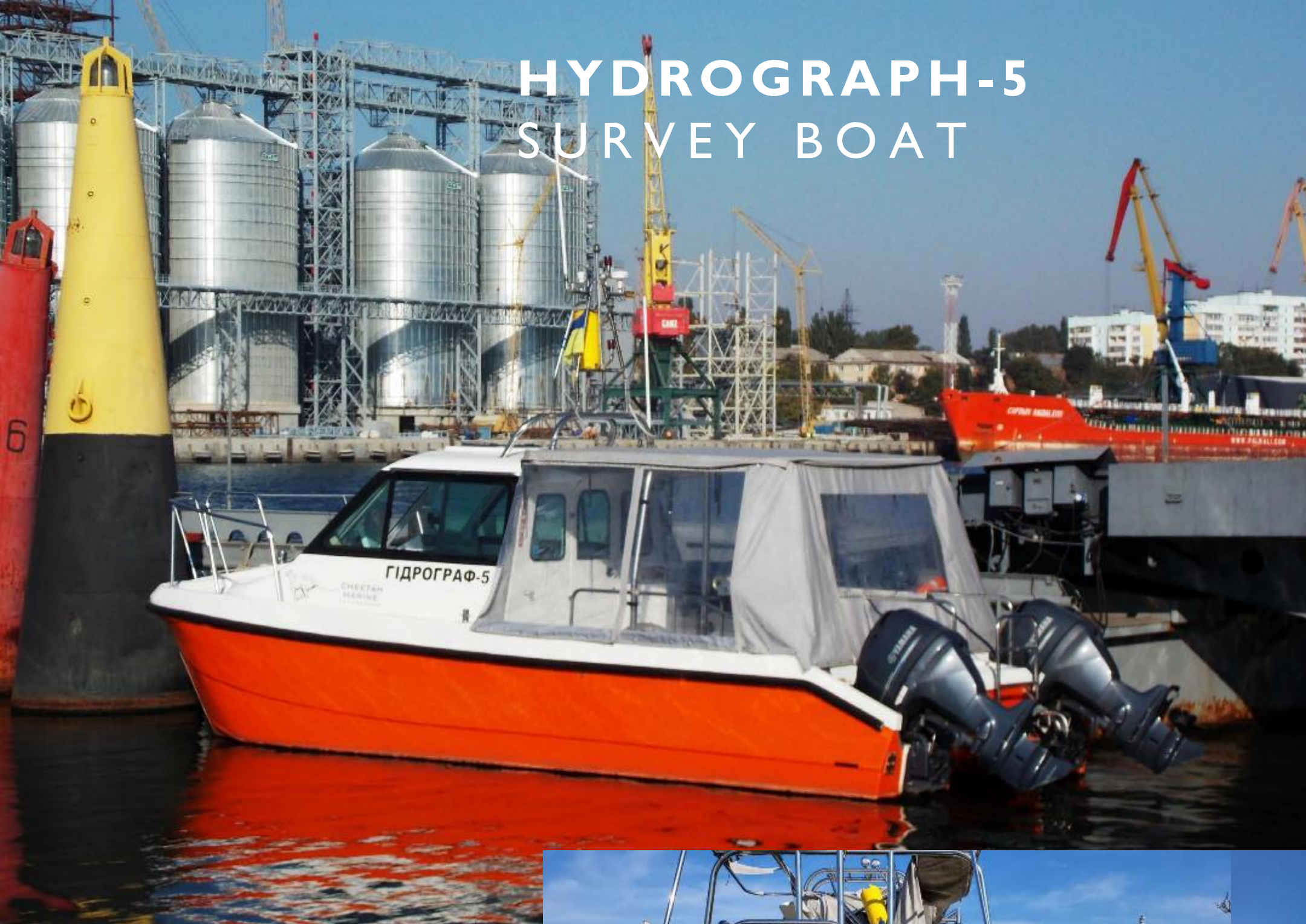


A Mitsubishi L200 car. Lost

HYDROGRAPH-5 SURVEY BOAT

Two YAMAHA-115 engines with attachment platforms **were missing after de-occupation** on the Hydrograph-5 survey boat. Its cable connections were damaged as well.

The underbody has penetrating damage, broken portholes of the vessel superstructure, and damaged electrical cables.



HYDROGRAPH-12 CRAFT

The water propeller has been missed.
The screw shaft has been damaged.

The cable connections have partially been damaged.

Batteries, spare parts and tools have been missed.





KAPITAN BASHEV VESSEL

The Kapitan Bashev is a small hydrographic vessel which carries out Aids-to-Navigation (AtoN) maintenance. The preliminary damage check of the vessel, which had been located within the temporarily occupied territory, was carried out **after the de-occupation** of the Kherson Section.

The engine room, steering room and hold have been filled with water. After dewatering, shut-off valves, ballast system piping, engine cooling system, and fuel system were found to be missing.

Cable connections were partially cut. Cabin furniture has been damaged and destroyed.

Batteries, spare parts, tools, household appliances and galley equipment were missed. Fuel tanks were filled with water.

Emergency equipment was missed. Hydraulic system of the hoist was damaged.



LORAN CRAFT

MerCruiser-3.0L engine has been missed, portholes of the deck superstructure have been broken and electrical cables damaged **after de-occupation.**



SHLIAHOVYK VESSEL



A topographic map of a region, likely the Pacific Northwest, is shown in a light gray color. The map features contour lines representing elevation, a grid of latitude and longitude lines, and various geographical features like coastlines and islands. The text "Thank you for your attention!" is overlaid in the center in a bold, black, sans-serif font.

Thank you for your attention!