



# WORLD PORT INDEX (WPI) CROWDSOURCING ELEMENTS

National Geospatial Intelligence Agency: Maritime Safety Office

May 2021

Approved for Public Release#1-565

# Overview

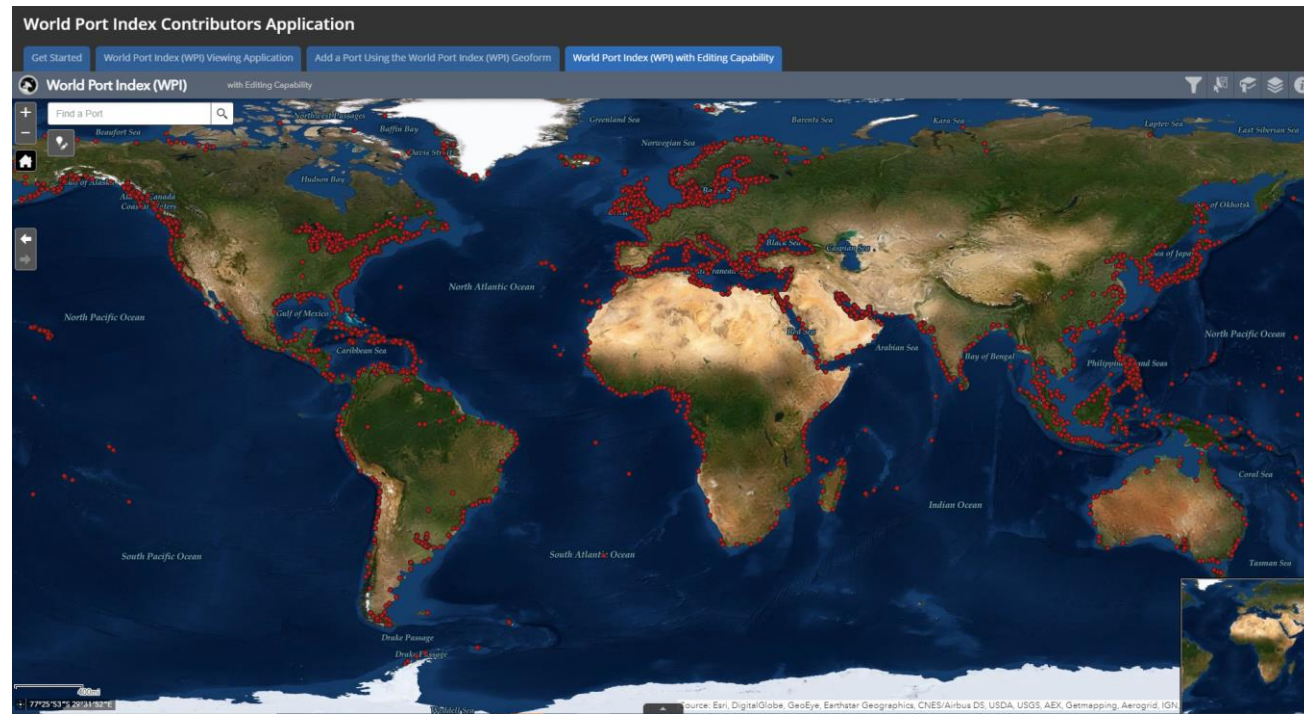
- Modernized World Port Index (WPI)
- Data Additions and Enhancements
- Contributing to the World Port Index
- Contribution Capabilities Are Operational
- Links and Contact Information

Approved for Public Release#1-565



# Modernized World Port Index (WPI)

- Geospatial representation of the World Port Index (WPI) available on ArcGIS Online (AGOL) platform.
- Access AGOL platform two ways:
  - Maritime Safety Information (MSI) site: <https://msi.nga.mil/Publications/WPI>
  - Direct Link: <https://nga.maps.arcgis.com/apps/MapSeries/index.html?appid=f9515d53e3e24ae7919f02eb8f554c96>



Approved for Public Release 21-565

# Data Additions and Enhancements

Scroll through and find relevant information for a port in its pop-up box.

- Tide Ranges
- Depths
- Port Services

## Additional and Enhanced Data

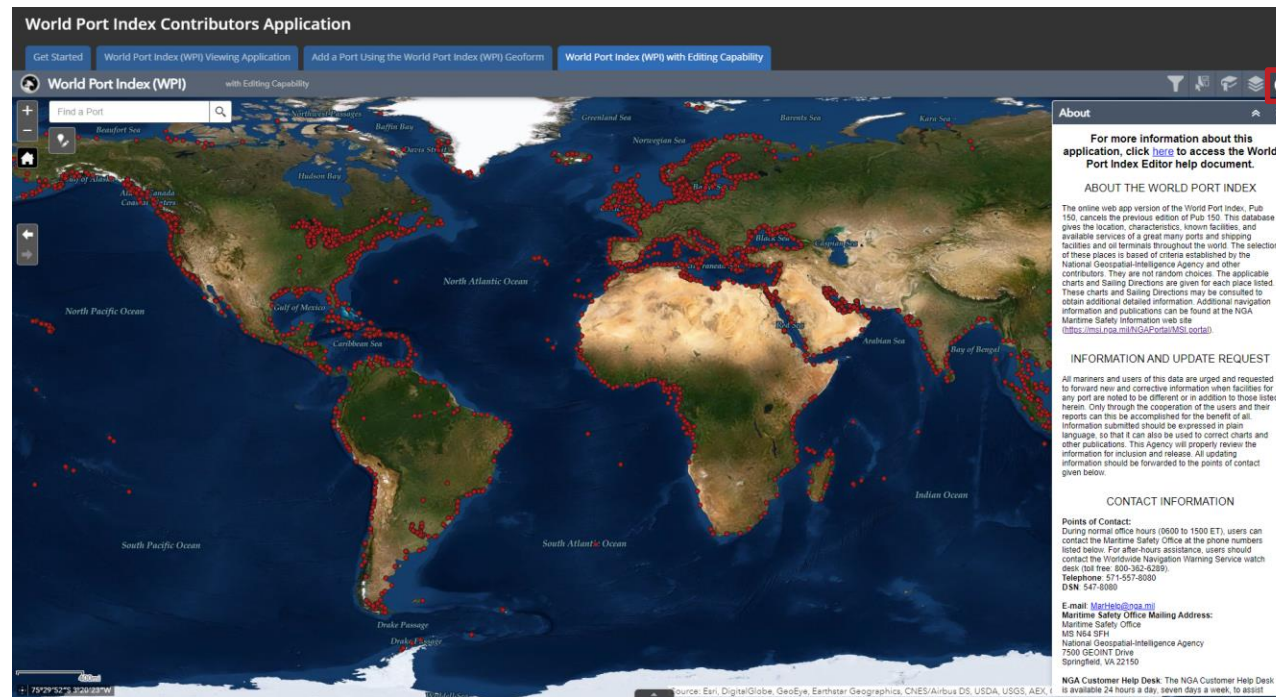
- UN LOCODE (to come)
- Actual values for depths
- Full titles of Publications
- More frequent updates



Approved for Public Release 21-565

# Contributing to the World Port Index

- Users can update a port's information or submit new ports, based on authoritative knowledge.
  - *VISION: Crowdsource contributions to the WPI to provide the most up-to-date information for mariners across the globe.*
  - Help documents are available.
  - Add as much information as possible. Port name is the only required field.



Approved for Public Release #1-565



# Contribution Capabilities Are Operational

NGA requests partners begin contributing data to the World Port Index.

## *To add a port:*

### 1. Enter Information

1. Go to the [Add a Port Using the World Port Index \(WPI\) Geoform](#) tab.
2. Fill in information fields as completely as possible. Add any additional comments about the submission to the "Submission Comments" field.

### 2. Select Location

1. Using the Lat/Lon tab, enter the coordinates of the port. Click Set Location.

### 3. Complete Form

1. Click Submit.
2. All submissions must be accompanied by an email. Please send an email, specifying the name of the port(s), to MCDWPI@nga.mil. NGA reserves the right to review all submissions before adding them to the map.

## *To edit an existing port:*

### 1. Locate the Existing Port

1. Go to the [World Port Index \(WPI\) with Editing Capability](#) tab.
2. Locate the port to edit.
3. Open the Smart Editor widget, under the Find a Port search bar.
4. On the map, click on the port to edit. The attributes of the port will appear in the widget.

### 2. Edit Information and Location

1. Using the Smart Editor, edit any or all of the attributes of the port. Add any additional comments about the submission to the "Submission Comments" field.
2. If necessary, edit the location by using the "Edit Geometry" function.

### 3. Submit Edits

1. Click Save.
2. All submissions must be accompanied by an email. Please send an email, specifying the name of the port(s), to MCDWPI@nga.mil. NGA reserves the right to review all submissions before adding them to the map.

Approved for Public Release #1-565

# Links and Contact Information

- World Port Index Contributors Map direct link
  - <https://nga.maps.arcgis.com/apps/MapSeries/index.html?appid=f9515d53e3e24ae7919f02eb8f554c96>
- World Port Index page on NGA's Maritime Safety Information website
  - <https://msi.nga.mil/Publications/WPI>
- Notify for New Port Submissions or Editing Port Data:
  - [MCDWPI@nga.mil](mailto:MCDWPI@nga.mil)
- Questions, Issues, Feedback:
  - [MarHelp@nga.mil](mailto:MarHelp@nga.mil)

Approved for Public Release #1-565





Approved for Public Release#1-565