



**NATIONAL REPORT**

**22<sup>th</sup> Meeting of the Mediterranean and Black Seas  
Hydrographic Commission (MBSHC-22)**

27 – 28 May 2021

---

|  |  |            |            |          |              |
|--|--|------------|------------|----------|--------------|
| <b>1. Hydrographic Office / Service:</b> | <p>The Tunisian Navy Hydrographic and Oceanographic Center (TNHOC) is the national authority with regards to nautical chart production.</p> <p>The TNHOC collects, processes and distributes information related to safety of navigation. In the same time, the center analyses, archives, and implements databases in this field.</p> <p>The TNHOC also provides hydrographic and oceanographic services to third parties.</p>  |            |            |          |              |
| <b>2. Surveys:</b>                       |  |            |            |          |              |
| Coverage of new surveys<br>(See annex 1) | <p>During the period between 2019 and 2021, the TNHOC has conducted many hydrographic surveys mainly concentrated in the east coast of Tunisia. These hydrographic surveys were used to update the INT3210 and TN7520 charts and to produce new chart INT3212 (in progress).</p>   |            |            |          |              |
| New technologies and /or equipment:      | <p>Between 2019 and 2021, the TNHOC had purchased the following hydrographic equipment:</p> <ul style="list-style-type: none"> <li>▪ Four tides stations with meteorological sensors;</li> <li>▪ Two sound velocity profilers (Valeport miniSVP);</li> <li>▪ Two meteorological sensors;</li> <li>▪ Two miniSVS sound velocity sensors (Valeport);</li> <li>▪ The TNHOC has recently purchased a new multibeam system KONGSBERG M3 PHS sonar for shallow water and coastal surveys.</li> </ul> |            |            |          |              |
| New ships:                               | N.A.   |            |            |          |              |
| Problems encountered:                    | N.T.R  |            |            |          |              |
| <b>3. New charts &amp; updates:</b>      |  |            |            |          |              |
| ENCs:<br>(See ENCs coverage in annex 2)  | The status of Tunisian ENCs production is:   |            |            |          |              |
|  | Name   | Edition    | Issue date | Scale    | Nav. purpose |
|  | TN313208   | 2          | 08.01.2021 | 1/180000 | Coastal      |
|  | TN313210   | 2          | 08.01.2021 | 1/180000 | Coastal      |
|  | TN317500   | 2          | 15.09.2020 | 1/90000  | Approach     |
|  | TN317505   | 1          | 13.03.2019 | 1/90000  | Approach     |
|  | TN317510   | 1          | 15.02.2020 | 1/90000  | Approach     |
|  | TN317515   | 1          | 15.05.2020 | 1/90000  | Approach     |
|  | TN317520   | 1          | 15.09.2020 | 1/90000  | Approach     |
|  | TN412500   | 1          | 15.09.2020 | 1/22000  | Approach     |
|  | TN412510   | 3          | 15.12.2018 | 1/22000  | Approach     |
|  | TN412520   | 3          | 15.06.2020 | 1/22000  | Approach     |
|  | TN415000   | 2          | 31.01.2019 | 1/45000  | Approach     |
|  | TN511500   | 1          | 31.07.2020 | 1/12000  | Harbour      |
|  | TN511505   | 4          | 30.09.2018 | 1/12000  | Harbour      |
| TN511510                                 | 4  | 23.05.2017 | 1/12000    | Harbour  |              |
| TN511515                                 | 3  | 15.06.2020 | 1/12000    | Harbour  |              |
| ENC Distribution method:                 | All Tunisian ENCs are distributed through IC-ENC.  |            |            |          |              |
| RNCs:                                    | N.A.   |            |            |          |              |
| <b>INT Charts: (See annex 3)</b>         |  |            |            |          |              |
| <input type="checkbox"/> Published:      | The coproduced charts INT3208 and INT3210 with respectively Algerian hydrographic service and Italian hydrographic institute are published.  |            |            |          |              |

|  |  |   |                              |
|--|--|---|------------------------------|
| <input type="checkbox"/> In progress:        | INT 3212 with the Italian Hydrographic Institute.<br>"Da Ras El-Mir à Cap Africa – Pantelleria e Isole Pelagie"<br>Scale : 1/250 000   |   |                              |
| <input type="checkbox"/> Planned:            | N.A  |   |                              |
| National paper charts:<br><b>(Published)</b> | The TNHOC has produced 15 nautical paper charts covering the northern part of Tunisia. The online catalogue of national paper charts is available through the following link:<br><a href="http://www.cnct.defense.tn/index.php/fr/produits-et-services/produits/item/183-cartes">http://www.cnct.defense.tn/index.php/fr/produits-et-services/produits/item/183-cartes</a> |   |                              |
|  | The status of nautical paper charts produced by the TNHOC is mentioned in the table here below:  |   |                              |
|  |  | <b>Title</b>  | <b>Scale</b>                 |
|  |  | • 150 : De Ras Engela à Ras Mostfa.   | 1/150000                     |
|  |  | • 7500 : De cap Roux à cap Serrat<br>• 7505 : De cap Serrat à cap Zebib<br>• 7510 : De cap blanc à Jaziret El Monbasta (De Cap Blanc à l'île Plane)<br>• 7515 : De Jaziret Pilau à Jaziret Zembra (De l'île Pilau à l'île de Zembra)<br>• 7520: De Jaziret Zembra à K'libia | 1/75000                      |
|  |  | • 5000 : De cap Gamarth à Ras Fartass   | 1/50000                      |
|  |  | • 2500 : Jaziret Jalta (Ile de la Galite)<br>• 2510 : Rade et Bouhayret Benzart (Rade et lac de Bizerte)<br>• 2520 : Rade de Halk El Oued (Rade de la Goulette)   | 1/25000                      |
|  |  | • 1500 : Tbarka et abords<br>• 1505 : Bouhayret Benzart (Lac de Bizerte)<br>• 1510 : Port de Benzart et goulet du lac.<br>• 1515 : Port de Halk El Oued, Rades et Tounes (Port de la Goulette, Rades et Tunis)  | 1/15000                      |
|  |  | • 505: Port de plaisance de Benzart<br>• 515: Port de plaisance de Halk el Oued   | 1/5000                       |
|  | National paper charts: <b>(In progress)</b>  | • 516 : Port de pêche de Klibia<br>• 1520: Port de Klibia<br>• 2525: Rade de Klibia   | 1/5000<br>1/15000<br>1/25000 |
| Other charts, e.g. for pleasure craft:       | N.A.   |   |                              |
| Problems encountered:                        | N.T.R  |   |                              |
| <b>4. New publications &amp; updates:</b>    |  |   |                              |
| New Publications:                            | Tide table 2021 – Tunisian coast list of lights.   |   |                              |
| Updated publications:                        | Nautical charts and nautical publications are updated via notices to mariners. A paper version of notices to mariners is sent periodically to Spain and Turkey. A digital version of notices to mariners is sent periodically (every 2 weeks) via email to NGA (USA), SHOM (France), UKHO (UK), SHFN (Algeria) and IHM (Italy).  |   |                              |
| Means of delivery, e.g. paper, digital:      | All publications are available on paper.   |   |                              |

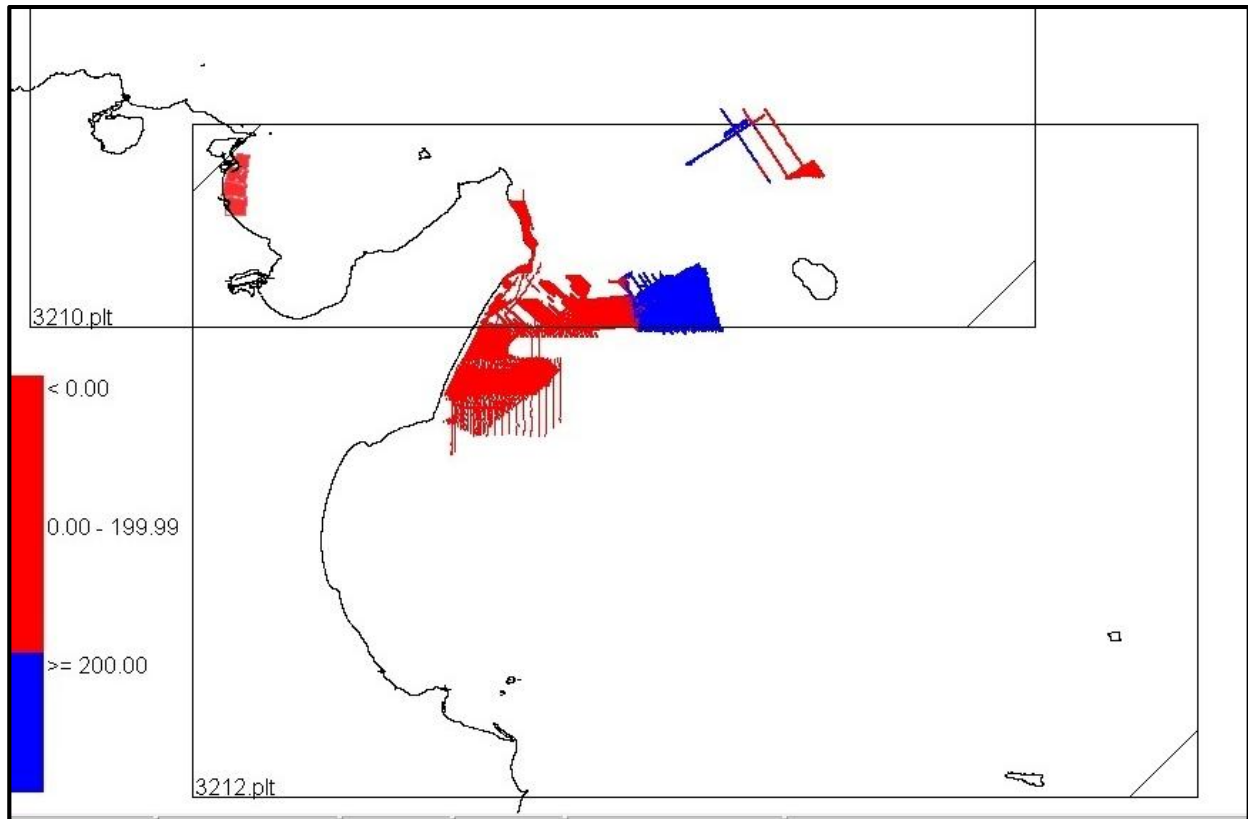
|   |   |
|---|---|
| Problems encountered:   | N.T.R   |
| <b>5. MSI</b>   |   |
| Existing infrastructure for transmission                              | Kelibia Navtex station.   |
| New infrastructure in accordance with GMDSS:                          | N.A   |
| Problems encountered:   | <p>Kelibia Navtex station is not operational for the moment due to technical problems.</p> <p>As a provisional solution, the Tunisian navigational warnings are broadcasted by the Maltese Navtex station until the Tunisian station will be ready and operational.</p> <p>The TNHOC is in process of acquiring a new Navtex station and hope to get the new Navtex station operational by the end of this year.</p>  |
| <b>6. C-55</b>  |   |
| Latest update   | <b>See annex 4</b>  |
| <b>7. Capacity Building</b>   |   |
| Offer of and/or demand for Capacity Building:                         | <p>Need for training course in:</p> <ul style="list-style-type: none"> <li>• Multibeam data assessment</li> <li>• Marine cartography (S-101, S-102 and S-104)</li> <li>• Tides and currents analysis and prediction</li> </ul>  |
| Training received:  | <ul style="list-style-type: none"> <li>▪ Multibeam echo sounder and side scan sonar systems workshop - Istanbul (Turkey), from 24 to 28 October 2016.</li> <li>▪ Workshop on ENC production distribution in Istanbul (Turkey), from 02 to 06 October 2017.</li> <li>▪ Workshop on technical aspects of maritime boundaries in Istanbul (Turkey), from 27 November to 01 December 2017.</li> <li>▪ Port and shallow water survey course in Genoa (Italy), from 17 to 21 September 2018.</li> </ul>   |
| Training offered:   | N.A.  |
| Status of bilateral development projects with hydrographic component. |   |
| <input type="checkbox"/> In progress:                                 | <p><b><u>Cooperation with Algerian Hydrographic Service</u></b></p> <p>A bilateral agreement with the Algerian Hydrographic Service regarding the publication and the distribution of the chart INT3208 is in progress.</p> <p><b><u>Cooperation with the Italian Hydrographic Institute</u></b></p> <p>The coproduction of the INT3212 with the Italian hydrographic institute is in progress.</p> <p>The last meeting of hydrographic expert was held via videoconference in December 2020, the scope of this meeting is to assess the progress of the INT3212 chart production.</p> <p>The TNHOC and the Italian hydrographic institute have concluded a bilateral agreement regarding the cooperation in the field of hydrography and oceanography.</p> |
| <input type="checkbox"/> Planned:                                     | N.A.  |
| <input type="checkbox"/> Under study:                                 | N.A.  |
| Definition of bids to IHO CBC:  | N.A.  |

|   |   |   |     |
|---|---|---|-----|
| <b>8. Oceanographic activities</b>  |   |   |     |
| General:  | The TNHOC ensure the annual production and distribution of tide tables.   |   |     |
| GEBCO/IBC's activities:   | N.A.  |   |     |
| Tide gauge network:   | <p>The TNHOC implemented since 1987 a tide gauge network (six tide gauges) to monitor the tide along the Tunisian coast. The tide network is there to:</p> <ul style="list-style-type: none"> <li>• Tide data collection,</li> <li>• Monitoring variations of the mean sea level,</li> <li>• The determination of harmonic constants necessary for the prediction of tides and the development of tide tables.</li> </ul> <p>The TNHOC has renewed the existing mechanical tide gauge network with seven digital tide gauge with real time data transmission.</p> |   |     |
| New equipment:  | <ul style="list-style-type: none"> <li>▪ Pressure tide gauge OTT.</li> <li>▪ ADCP current Meter System: RDI Workhorse 300-600 m</li> </ul>  |   |     |
| Problems encountered:   | N.T.R.  |   |     |
| <b>9. Other activities</b>  | <table border="1" style="width: 100%; border-collapse: collapse;"> <tr> <td style="width: 80%;"> Participation in IHO Working Groups:<br/> Meteorological data collection:<br/> Geospatial studies:<br/> Disaster prevention:<br/> Environmental protection:<br/> Astronomical observations: Magnetic/Gravity surveys: </td> <td style="width: 20%; text-align: center; vertical-align: middle;">N.A</td> </tr> </table>  | Participation in IHO Working Groups:<br>Meteorological data collection:<br>Geospatial studies:<br>Disaster prevention:<br>Environmental protection:<br>Astronomical observations: Magnetic/Gravity surveys: | N.A |
| Participation in IHO Working Groups:<br>Meteorological data collection:<br>Geospatial studies:<br>Disaster prevention:<br>Environmental protection:<br>Astronomical observations: Magnetic/Gravity surveys: | N.A   |   |     |
| <b>10. Conclusions</b>  | <p>The TNHOC confirms that cooperation in the Mediterranean area still remains the priority for all the countries involved.</p> <p>To ensure the safety of navigation in the Tunisian waters, the TNHOC intends to purchase new hydrographic assets and new hydrographic equipment in order to continue performing hydrographic and oceanographic survey and producing nautical charts with higher standards in all areas not yet surveyed.</p>   |   |     |

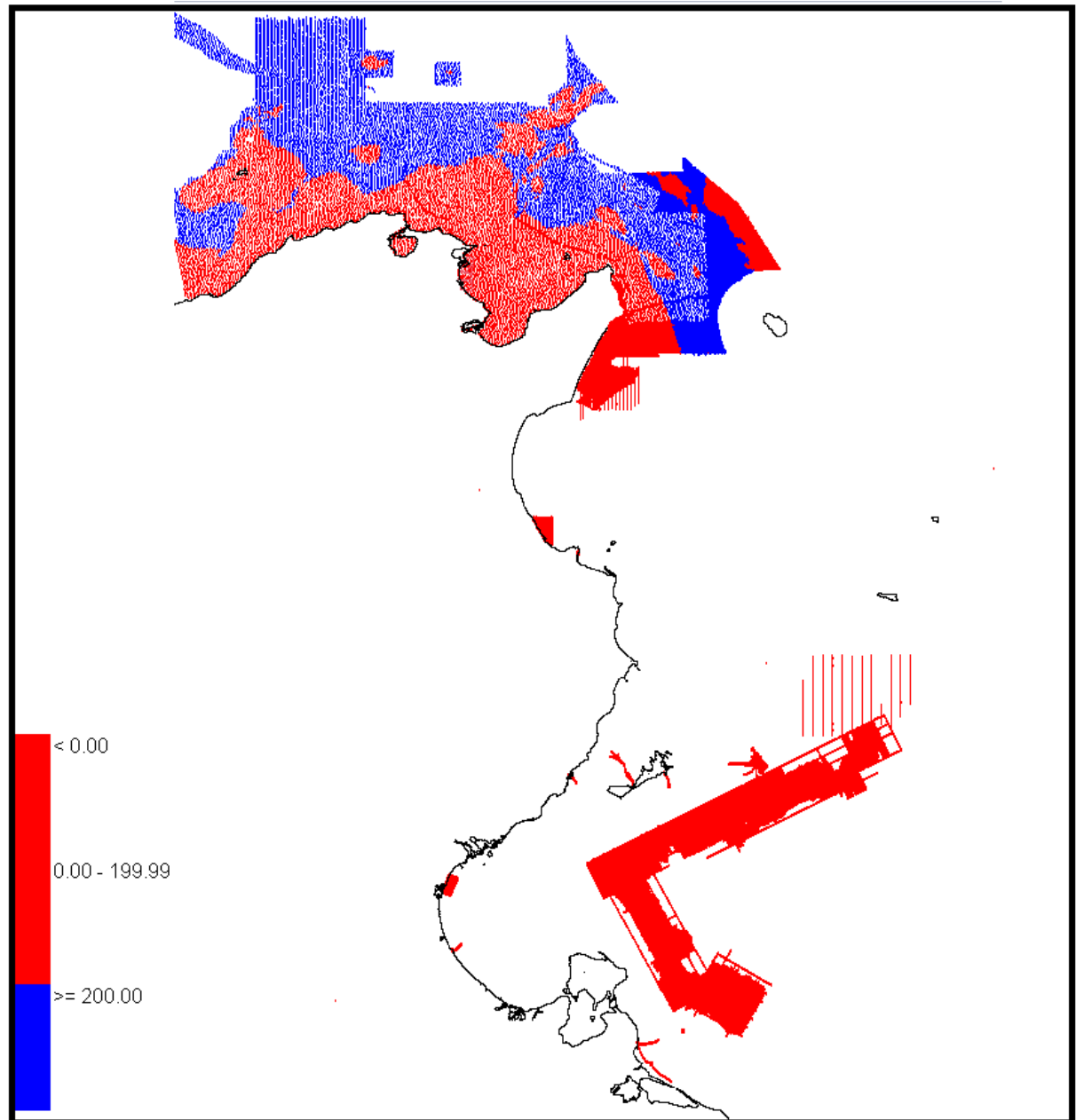
# ANNEX 1

## COVERAGE OF NEW SURVEYS

(2019 - Mai 2021)



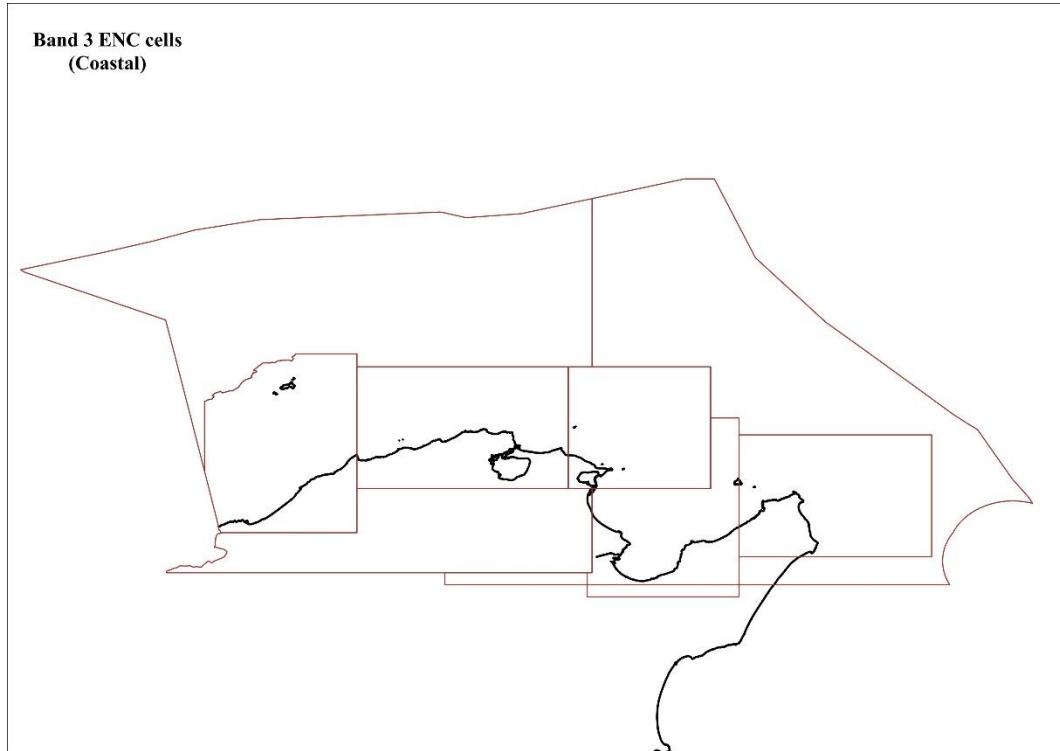
# STATUS OF HYDROGRAPHIC SURVEYING



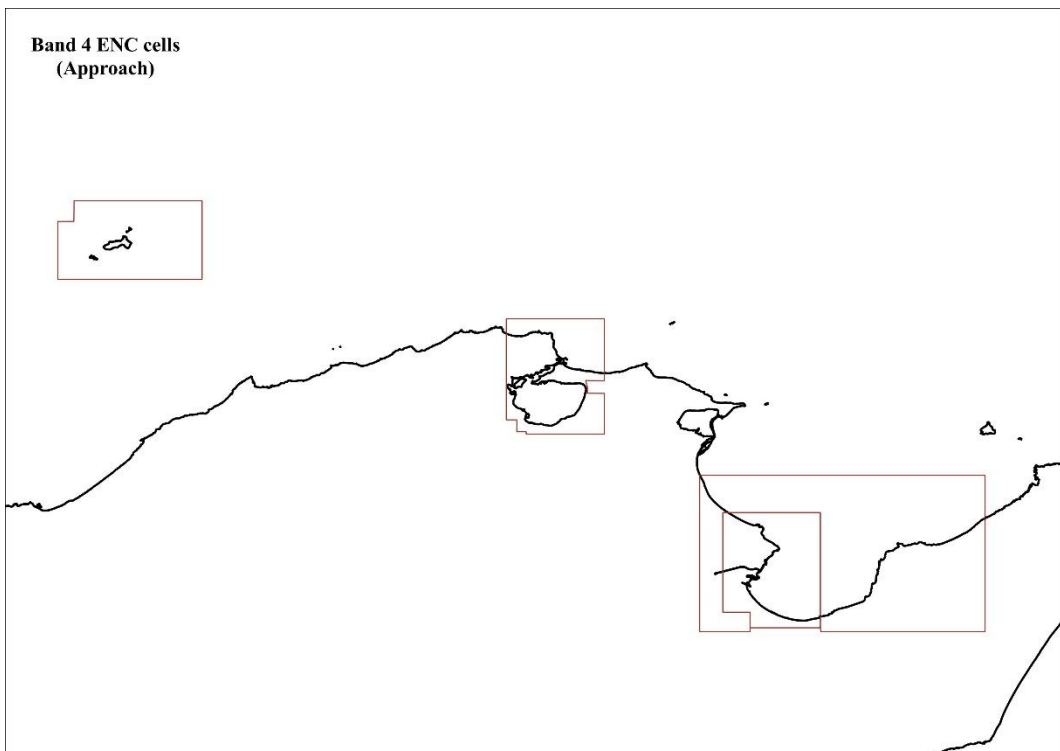
## ANNEX 2

### TUNISIAN ENC<sub>s</sub> COVERAGE

#### 1. Band 3 ENC<sub>s</sub>

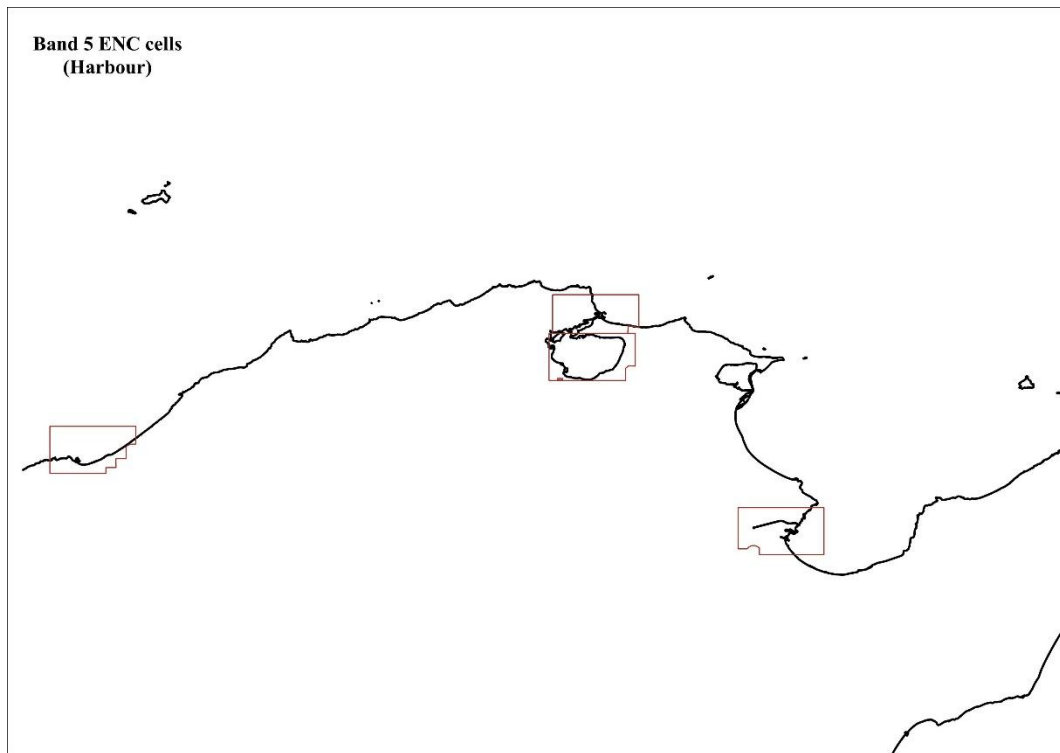


#### 2. Band 4 ENC<sub>s</sub>



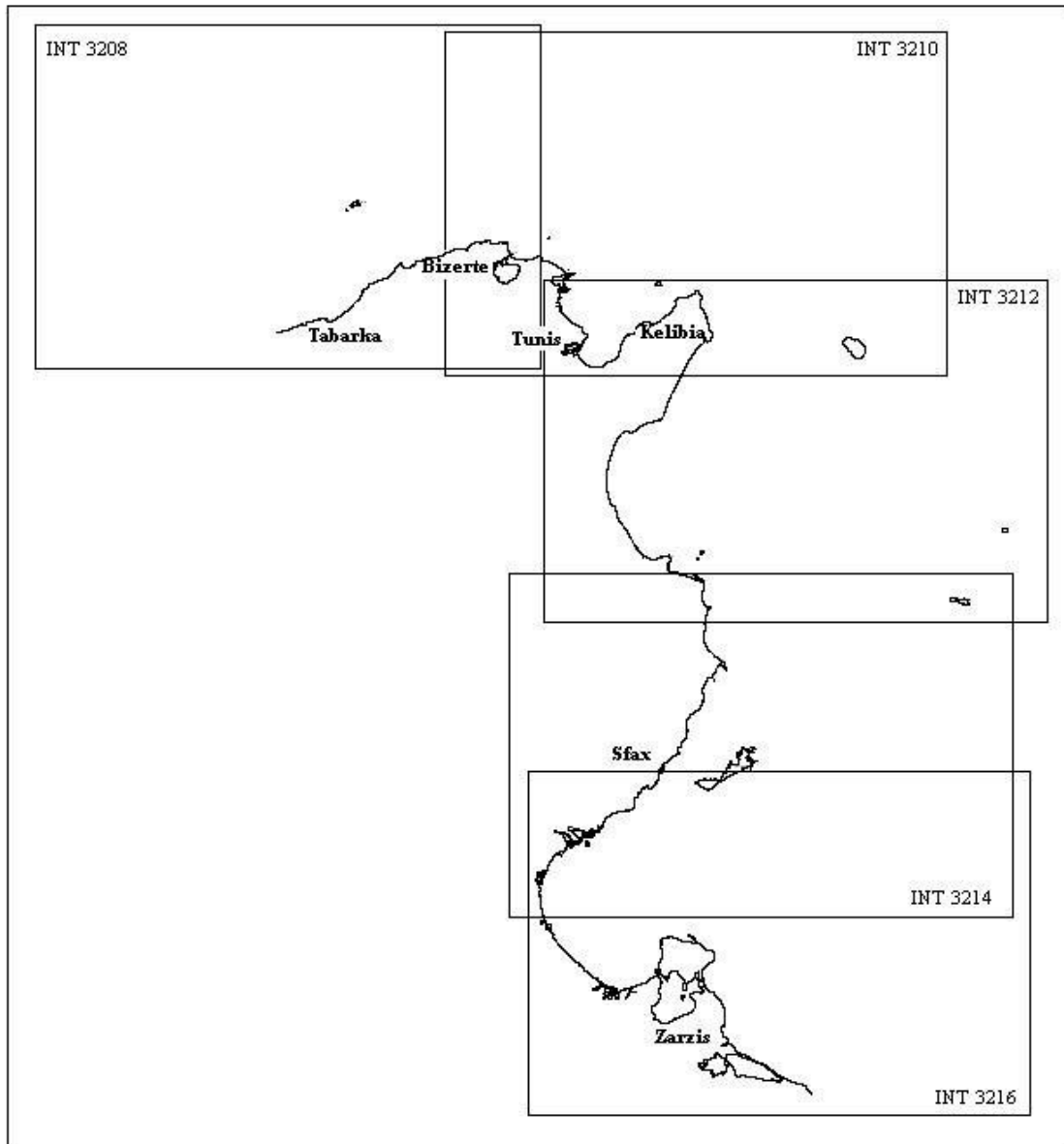


### 3. Band 5 ENC cells (Harbour)

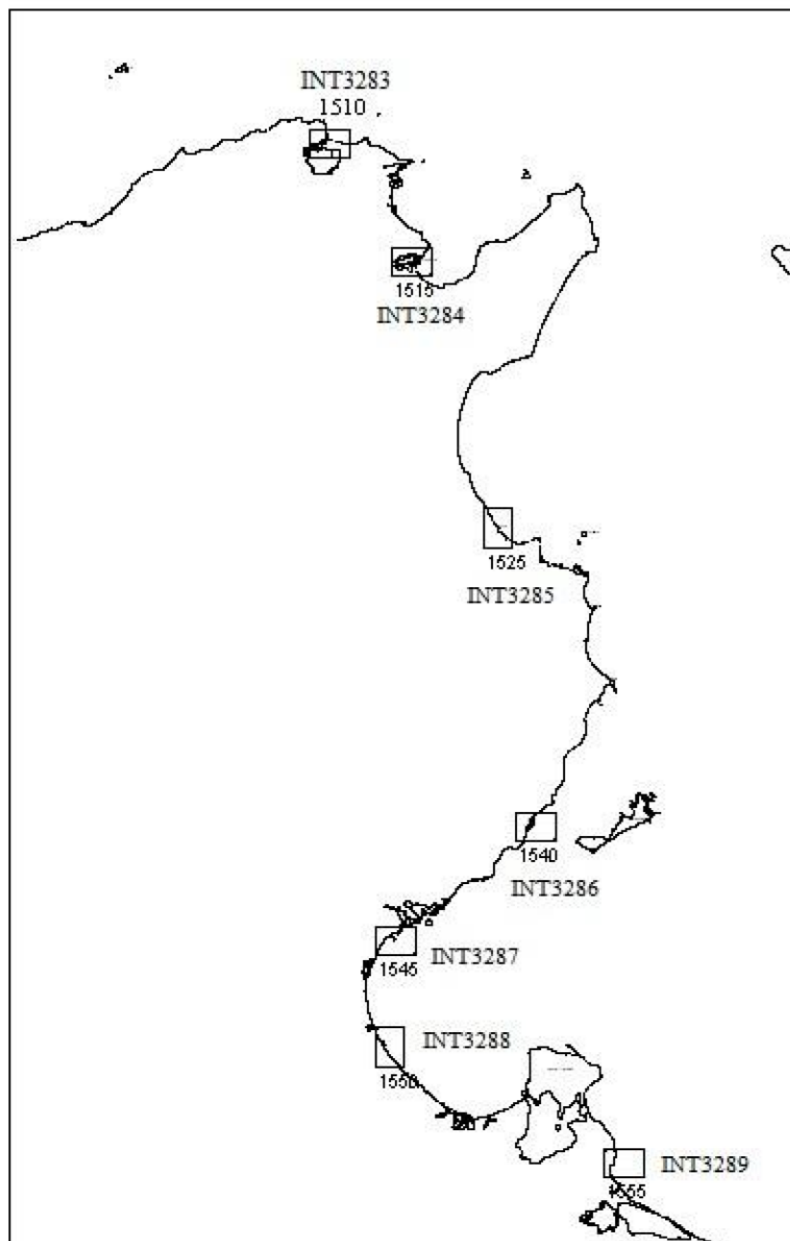


### ANNEX 3

#### SCHEME OF INTERNATIONAL CHARTS



| INT No. | National No. | Title  | Scale    | Status                                   |
|---------|--------------|--|----------|--|
| 3208    | 250          | De Ras El Hadid à Cap Zebib                              | 1/250000 | Achieved and will be published very soon |
| 3210    | 255          | De Banzart à K'libia – Trapani et Pantelleria            | 1/250000 | published                                |
| 3212    | 260          | Da Ras El-Mir à Cap Africa – Pantelleria e Isole Pelagie | 1/250000 | In progress                              |



| INT No. | National No. | Title                                  | Scale   | Status      |
|---------|--------------|--|---------|-------------|
| 3283    | 1510         | Port de Benzart et goulet du Lac       | 1/15000 | Achieved    |
| 3284    | 1515         | Ports de Halk El Oued, Rades et Tounes | 1/15000 | Achieved    |
| 3285    | 1525         | Port de Susah (Sousse)                 | 1/15000 | In progress |
| 3286    | 1540         | Port de Safaquis (Sfax)                | 1/15000 | In progress |
| 3287    | 1545         | Port de Skhirra                        | 1/15000 | In progress |
| 3288    | 1550         | Port de Gannouche (Gabès)              | 1/15000 | In progress |
| 3289    | 1555         | Port de Zarzis                         | 1/15000 | In progress |

## ANNEX 4

### C55-Tunisia-20210506.pdf

| C-55 Summary for:                                |              |              |               | Comments on Charts:  |
|--|--------------|--------------|---------------|--|
| Country: Country                                 | Tunisia      |              |               | <p>According to the IHO (MBSHC), it was agreed that TNHOC will produce international charts as follows :</p> <ul style="list-style-type: none"> <li>• INT Chart 3208 in cooperation with the Algerian HO (achieved).</li> <li>• INT Chart 3210 in cooperation with the Italian HO (achieved).</li> <li>• INT Chart 3212 in cooperation with the Italian HO (surveyed at 25%).</li> <li>• INT Chart 3214 to be produced by the TNHOC (surveyed at 25%).</li> <li>• INT Chart 3216 in cooperation with the Libyan HO (surveyed at 20%).</li> </ul> |
| Iso Code:  | TUN          |              |               |  |
| Country  | TUN-F        |              |               |  |
| SubCode:   | F            |              |               |  |
| INT Region:                                      | C            |              |               |  |
| Country/Depend:                                  | Tunisia      |              |               |  |
| Last updated:                                    |              |              |               |  |
| Provided by:                                     |              |              |               |  |
| Chart coverage                                   | Passage (%)  | Coastal (%)  | Port (%)      | <b>Comments on Surveys:</b>  |
| INT  | 0            | 40           | 30            |  |
| RNC  | 0            | 0            | 0             |  |
| ENC  | 0            | 25           | 30            |  |
| <b>Status of Paper C harts</b>                   |              |              |               | <p>The eastern maritime area is being surveyed since 2010.</p>   |
| Paper charts with depths in meters (%)           |              |              | 100           |  |
| Paper charts referenced to a satellite datum (%) |              |              | 100           |  |
| Status of surveys                                | Adequate (%) | Resurvey (%) | No survey (%) |  |
| 0-200m   | 55           | 45           | 0             |  |
| > 200m   | 46           | 54           | 0             |  |

| MSI             | Y/N | Comments on MSI:  |
|-----------------|-----|---|
| Local warning   | Y   | Through NAVAREA III   |
| Coastal warning | Y   |   |
| Nav warning     | Y   |   |
| Port warning    | Y   |   |
| GMDSS           | Y/N | Comments on GMDSS:  |
| Master Plan     | N   | The GMDSS implementation responsibility lies on the merchant marine administration.   |
| Area A1         | N   |   |
| Area A2         | N   | All Tunisian merchant marine vessels comply with the IMO recommendations regarding the GMDSS implementation.  |
| Area A3         | N   |   |
| NAVTEX          | Y   | Kelibia Navtex station is not operational for the moment due to technical problems. The TNHOC broadcast its related MSI via Malta station.  |
| SafetyNet       | N   | The GMDSS Implementation responsibility lies on the merchant marine administration.<br>All Tunisian merchant marine vessels comply with the IMO recommendations regarding the GMDSS implementation. |

