

Mediterranean and Black Seas Hydrographic Commission (MBSHC)

# 5<sup>th</sup> Region F ICCWG meeting

## Cádiz – Wednesday 12<sup>th</sup> June 2019

Report to the 21<sup>st</sup> conference of MBSHC

[regionFcoord@shom.fr](mailto:regionFcoord@shom.fr)



# [ICC5-2] – Minutes of ICCWG-4

| Action N°         | Action  | Responsible                | Update  |
|-------------------|---|----------------------------|---|
| <b>MBSHC20/08</b> | Member States and Associate members to ensure that the information on any requirements for ECDIS back-up arrangements using paper charts have been posted on the IHO website, and to update or give confirmation of no change at least once a year. | All                        | Permanent. Updates received from : GB, GR, HR, IT, RO, TN, UA                               |
| <b>MBSHC20/15</b> | To liaise with INTOGIS Management team (IHO Secretariat) to retrieve their national account access details.   | DZ, EG, MA, ME, SI, SY, TN | Done for DZ, EG, MA & TN  |
| <b>MBSHC20/16</b> | EG to propose a transition plan including procedure for reprint agreement prior to endorsement in the region F catalogue.   | EG in liaison with UK      | EG and GB are actively working on the development of this transition plan, no issue raised. |



# [ICC5-3] – Region F INT Scheme

| Action N°  | Action   | Responsible       | Update   |
|------------|--|-------------------|--|
| MBSHC20/32 | New INT chart producers to provide Region F ICC and IHO Secretariat with the INT charts iaw IRCC7 Decision3 and Region F ICCWG ROPs section 3.11.  | New INT producers | INT 3871 (GE101), INT3872 (GE102), INT3873 (GE103) and INT3876 (GE104) received 2019/05/30.<br>Permanent action. |
| MBSHC20/35 | MS to check and, if necessary, update their INT charts metadata (chart limit, title, year, format, scale, etc.) included in the region F INT catalogue using their INTOGIS national account. | INT producers     | Updates received from DZ, ES, FR, GB, GE, HR, UA   |



# [ICC5-3] – Region F INT Scheme : status

---

## ➔ New version of the catalog v3.0.6 June 2019

- **Current catalog : 306 INT Charts**

**220 Produced & 86 Schemed**

|          | Produced | Schemed |
|----------|----------|---------|
| Overview | 15       | 0       |
| General  | 3        | 2       |
| Coastal  | 47       | 38      |
| Approach | 45       | 11      |
| Harbour  | 91       | 27      |
| Berthing | 19       | 8       |

*Catalog v3.0.6 June 2019*



# [ICC5-3] – Region F INT Scheme : proposals

| Action N°  | Action  | Responsible   | Update  |
|------------|---|---------------|---|
| MBSHC20/36 | MS to submit their new INT chart proposals using their INTToGIS national account. | INT producers | Proposals received from GR (Region F ICCWG CL 01 & 02/2019) & EG (MBSHC20/15) |

## ***Proposed MBSHC action :***

**EG to provide proposals of INT charts to the Region F ICC, to check consistency with the current INT scheme (new charts to be added to the scheme and charts taking over already produced INT charts, IAW with transition plan with UKHO, with justification of proposed modifications to the existing scheme if applicable)**



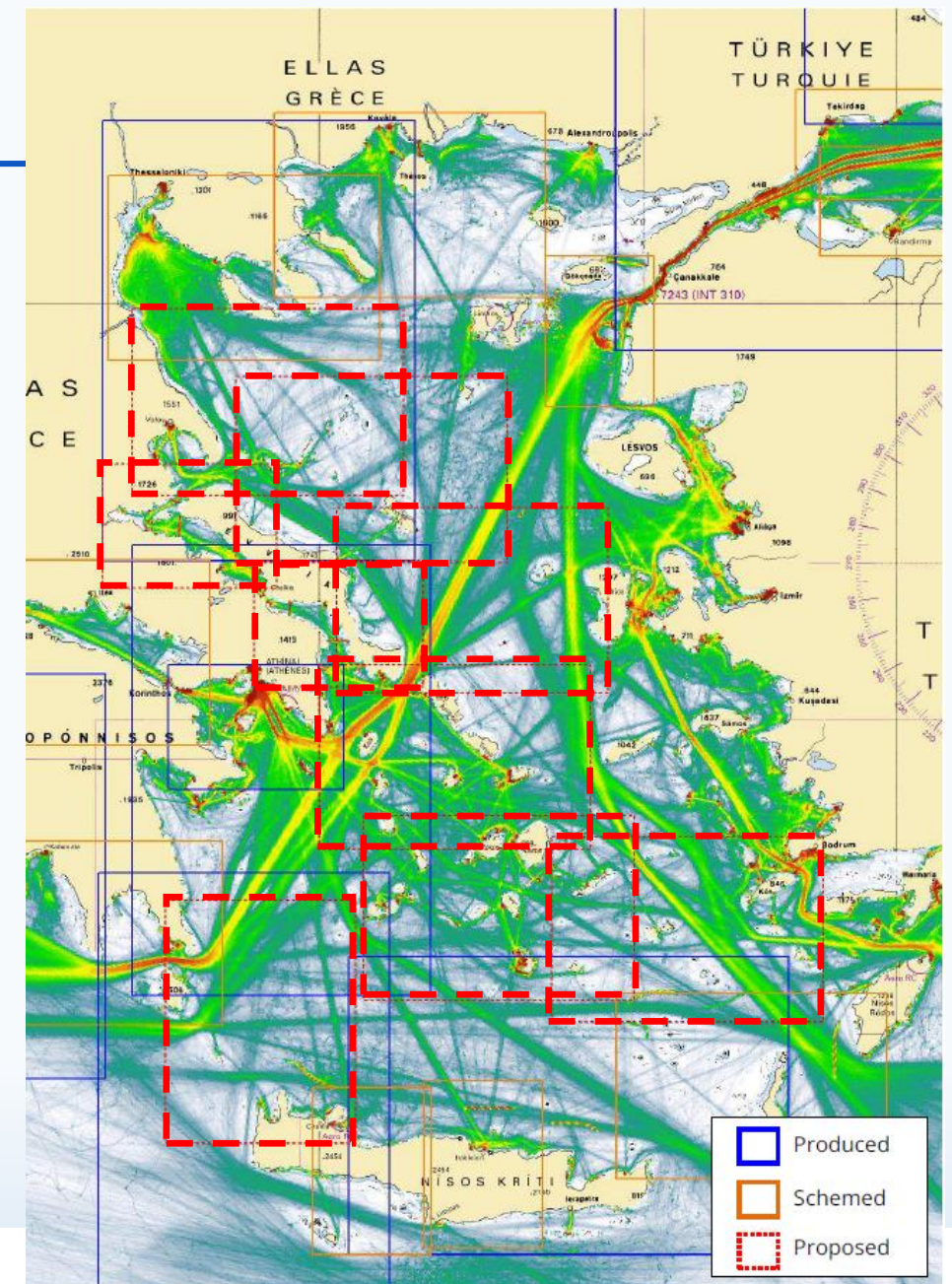
# [ICC5-3] – Region F INT Scheme

- **Proposal to update the Region F INT scheme in Aegean sea**

9 new INT charts proposed by GR

Strong objection from TR, based on matters of disputed jurisdiction over some water areas.

**The Coordinator's view is that the issues raised are of a non technical nature (see ROPs section 3.7), and recommends that the MBSHC should approve the proposal of introducing those charts in the scheme, and assign production to GR, except for INT3736 in the South-East corner, to be assigned to GR & TR**



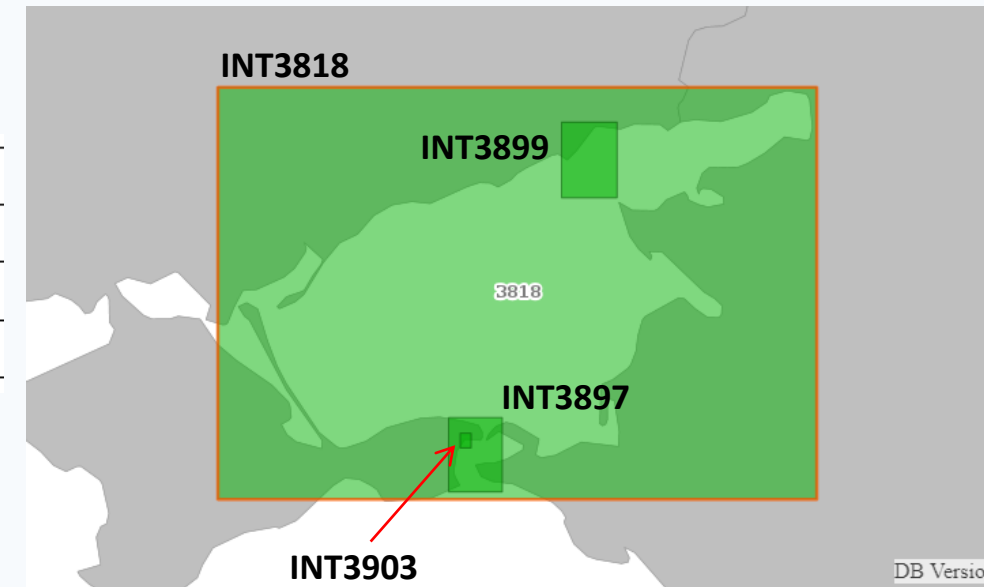


# [ICC5-3] – Region F INT Scheme

- **INT scheme in the Black and Azov Seas – Pending charts**
- Request from UA to produce 4 INT Charts

|      |      |    |         |                             |
|------|------|----|---------|-----------------------------|
| 3417 | 3897 | UA | 50 000  | Kerchenska Strait           |
| 3421 | 3899 | UA | 50 000  | Approaches to Mariupol Port |
| 3632 | 3903 | UA | 10 000  | Kerch Port                  |
| 3229 | 3818 | UA | 350 000 | Sea of Azov                 |

No agreement between RU and UA about production of these charts.

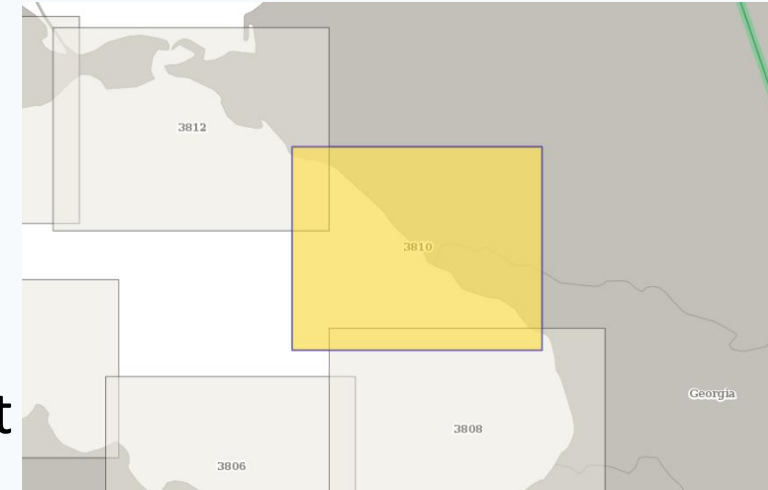


**The Coordinator recommends that these charts, submitted by UA in INTToGIS should be left pending until UA and RU reach an agreement**



# [ICC5-3] – Region F INT Scheme

- **INT scheme in the Black and Azov Seas – Pending charts**
- Request from GE to co-produce **INT3810** with RU (INT3810 is currently produced by RU / RU32173)
- RU and GE have still not reached an agreement on this chart



## ***Proposed MBSHC action :***

**RU and GE to work on an agreement for the coproduction of INT3810 and report to the Region F ICC, who can provide help if needed.**





# [ICC5-3] – Region F INT Scheme

---

- **INT scheme in the Black and Azov Seas – Pending charts**
- Request from GE to produce the INT chart covering Soukhumi port with Approaches (GE108)

The interest of producing an INT chart for this port is weak (RU aborted production of a schemed INT chart in 2009)

**The Coordinator's view is that this chart should not be inserted in the INT scheme of the region.**

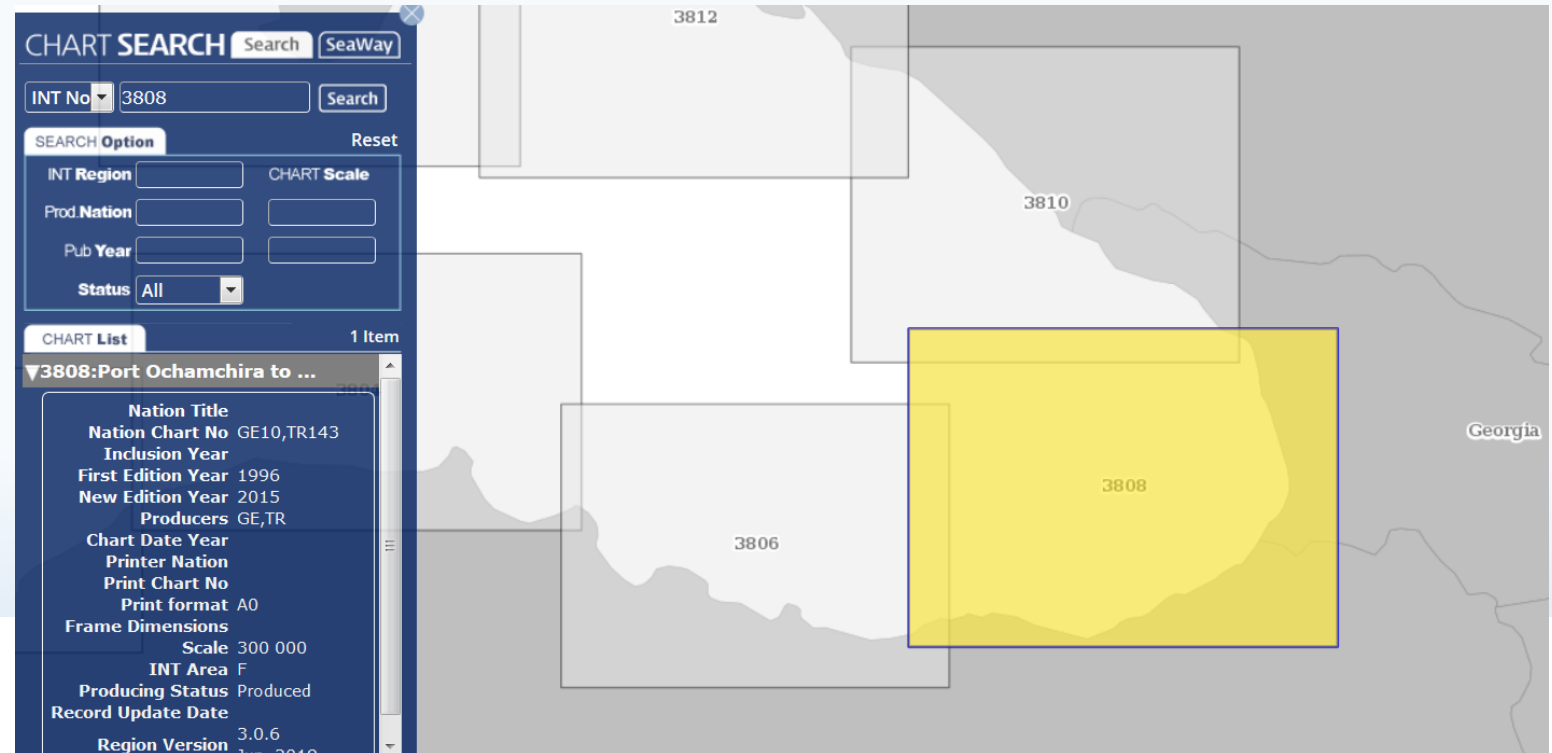


# [ICC5-3] – Region F INT Scheme

- INT3808 Chart (refer to RU national report)

## ***Proposed MBSHC action :***

**RU to provide assigned producers (TR and GE) with repromats of their updated chart corresponding to INT3808 and with updating information for ENC TR200014**



The screenshot displays the CHART SEARCH interface with the following details:

- Search Bar:** INT No: 3808, Search button.
- SEARCH Option:** INT Region, CHART Scale, Prod.Nation, Pub Year, Status: All, Reset button.
- CHART List:** 1 Item. Item: 3808:Port Ochamchira to ...
- Chart Details:**
  - Nation Title
  - Nation Chart No: GE10,TR143
  - Inclusion Year
  - First Edition Year: 1996
  - New Edition Year: 2015
  - Producers: GE,TR
  - Chart Date Year
  - Printer Nation
  - Print Chart No
  - Print format: A0
  - Frame Dimensions
  - Scale: 300 000
  - INT Area: F
  - Producing Status: Produced
  - Record Update Date
  - Region Version: 3.0.6

The background map shows the region with chart numbers 3812, 3810, 3806, and 3808. The chart 3808 is highlighted in yellow. The label 'Georgia' is visible on the right side of the map.



# [ICC5-3] – Region F INT Scheme

---

- **Western Mediterranean INT Scheme (ES proposal)**

| Action N°         | Action  | Responsible | Update   |
|-------------------|---|-------------|--|
| <b>MBSHC20/37</b> | ICCWG-F to confirm the transfer of INT3102, INT3108, INT3110 and INT3112 to the Western Mediterranean small scale INT scheme (see decision MBSHC20/06). | ICCWG-F     | Transfer confirmed. These « General » charts will remain in the INT scheme after production of the schemed « Coastal » INT charts by ES. |



# [ICC5-4] – ENC coverage status

| Action N°         | Action   | Responsible | Update  |
|-------------------|--|-------------|---|
| <b>MBSHC20/17</b> | MS to use the IHO online port database to update their port priority list and report to the Regional Charting Coordinator (RCC). | All         | Updates received from CY, DZ, ES, EG, FR, GB, GE, GR, HR, IT, RO and UA               |
| <b>MBSHC20/18</b> | RCC to disseminate an updated version of the Port priority list.   | RCC         | Report of the feedback received transmitted to the members of ICCWG, Sec IHO and NGA. |

## ***Proposed MBSHC action :***

**Make those actions permanent, updates to the Port priority list to be made on a regular basis, at least before each MBSHC meeting.**



# [ICC5-4] – ENC coverage status

---

- **UB1 and UB2 coverage considered as completed**
- **UB3 coverage with persistent gaps on the Southern shore of the Mediterranean Sea**
- **UB4/5/6 : still some ports from NGA World Port Index (Pub150) not covered**

***eg. 5 medium ports :***

|       | Port Name            | Country | Port Size | Comment                                |
|-------|----------------------|---------|-----------|--|
| 43130 | IRAKLION             | GR      | M         |  |
| 42340 | ORMOS ALIVERIOU      | GR      | M         |  |
| 45755 | TANGER               | MA      | M         | FR5 to be released 2019                |
| 43560 | CONSTANTA            | RO      | M         | RO4 released, RO5 in 2019, RO6 in 2020 |
| 45435 | TAZERKA OIL TERMINAL | TN      | M         |  |



# [ICC5-4] – ENC coverage status

---

- **Report from ES on some issues in Gibraltar strait arrived late and couldn't be analysed in detail :**
  - **The issue raised on ENCs produced by FR/MA is of a technical nature and should be easily solved by consultation between ES, FR and MA (agreement on a common limit)**
  - **The other issue is mainly of a non technical nature and cannot be addressed by the ICCWG (see ROPs section 3.7).**





# [ICC5-5] – ENC overlap risk assessment

| Action N°         | Action   | Responsible     | Update  |
|-------------------|--|-----------------|---|
| <b>MBSHC20/19</b> | Concerned MSs to liaise bilaterally to resolve ENC overlappings, keeping the MBSHC Chair informed.   | IT, GR, TR & HR | Little progress noted. Actions undertaken by IT and HR to resolve overlaps, overlaps in the process of being resolved.<br>No information received on possible actions taken by GR and TR to resolve the many overlaps affecting the region.<br>Should be a permanent action for all ENCs producers. |
| <b>MBSHC20/21</b> | RENCs to provide a template report in order to collect the evaluation of risk level on ENC overlaps from the MS in the frame of the WENDWG risk assessment experimentation.  | RENCs           | Latest version (WEND9) sent to all ICCWG Members  |
| <b>MBSHC20/22</b> | MS to use the RENCs' template report to provide the RCC with: <ul style="list-style-type: none"> <li>- evaluation of risk level on the most critical ENC overlaps based on the IC-ENC risk assessment regional database (level: MEDIUM);</li> <li>- their views and comments on the IC-ENC risk assessment methodology.</li> </ul> | All             | Returns received from GB, GE, GR, IT, RO, SI, TR and UA   |



# [ICC5-5] – ENC overlap risk assessment

- **IC-ENC Overlap report :**

**Persistent overlaps in Region F in all usage bands**

March 18 > June 19

**Resolved (and Acceptable) overlaps ↗ :**

Mechanisms put in place at the RENC level are working

**Low & Medium overlaps persist**

**Potential overlaps ↗**

Coordination between producers still insufficient

| Region F  | March 2018 | June 2019 |
|-----------|------------|-----------|
| Resolved  | 36         | 71        |
| Accept    | 3          | 15        |
| Potential | 37         | 50        |
| LOW       | 81         | 81        |
| MEDIUM    | 24         | 24        |
| HIGH      | 0          | 0         |
| Total     | 181        | 241       |



# [ICC5-5] – ENC overlap risk assessment

---

- **IC-ENC Overlap report :**

**Persistent overlaps in Region F in all usage bands**

**Some good progress is made with ongoing agreements or discussion to solve overlap between GB/AL, IT/HR, IT/GR, GR/HR, RO/UA, GB/ME, GB/TN,...**

**But still several overlaps still with no move towards a solution, risk assessed Medium or Low by IC-ENC.**



# [ICC5-5] – ENC overlap risk assessment

- **Highest risk case :**

*Example :*

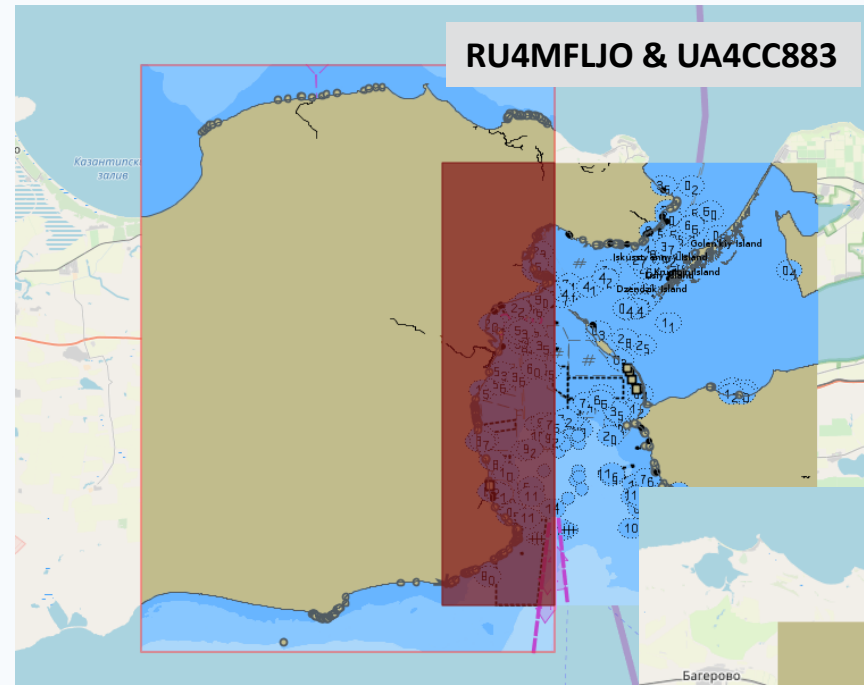
RU4MFLJO & UA4CC883

RU4MFLJO & UA4CC884

IC-ENC Risk analysis → Medium

But critical location of the overlap (main route through Kerch Straits & anchorage areas)

→ **To be resolved**



# [ICC5-5] – ENC overlap risk assessment

- **Highest risk case**

*Example :*

GR2AF7UH & TR20022B

GR2AF7UH & TR20022A

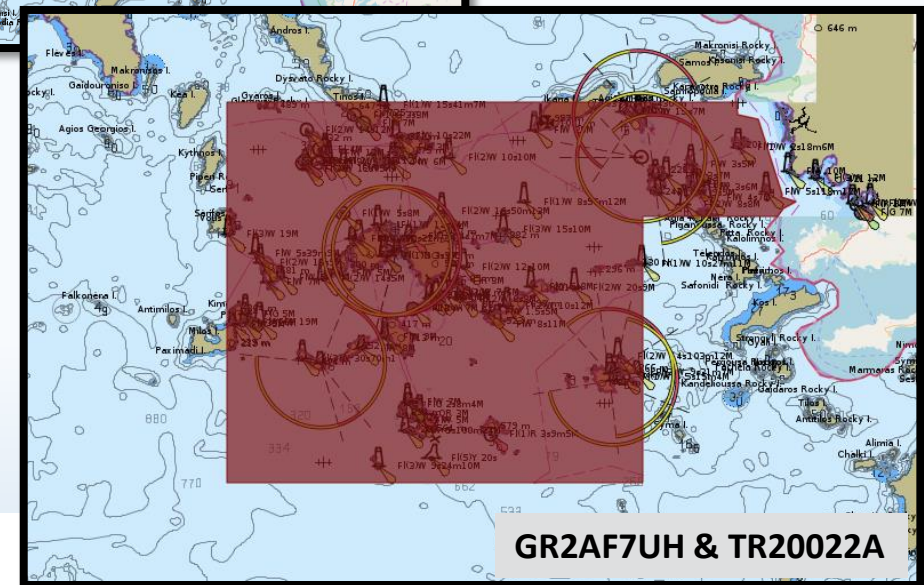
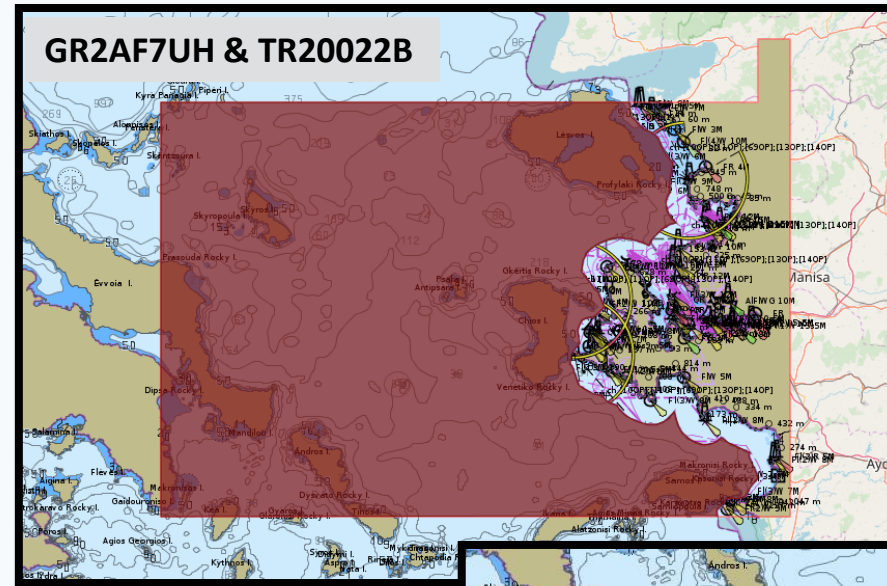
IC-ENC Risk analysis ➔ Medium

GR analysis : High

TR analysis : Low

CC : high risk of inconsistency between cells due to lack of coordination between producers

➔ **To be resolved**



# [ICC5-7] – Priorities for the ICCWG ?

---

- **What priorities for the ICCWG and the new ICC ?**
  - **Continue updating the INT chart scheme or freeze the current scheme?**
  - **Full implementation of the ENC scheme?**
  - **Promotion of the S-100 series?**
- **The new ICC recommends that MBSHC should continue to foster dialogue between countries.**
- **One of the challenges being to set priorities on topics to be addressed within the framework of this dialogue.**





# [ICC5-8] – AOB & Closure

---

- **Documents concerning the group are collected on a restricted page of the commission's web page, which limits the diffusion of information**

***Proposed MBSHC action :***

**IHO Secretariat to put the documents (CL, Correspondence, Presentations) on an open access page of the commission and to keep only the archived versions of old catalogues on the restricted access page.**



# Action requested from the MBSHC

---

The MBSHC is invited to :

- Take note of the 5th Region F ICCWG report
- Include the proposed actions in the MBSHC21 action list
- Consider the recommendations of the Region F International Charting Coordinator
- Take any other action deemed appropriate.

