



# CROATIA

Report to MBSHC24

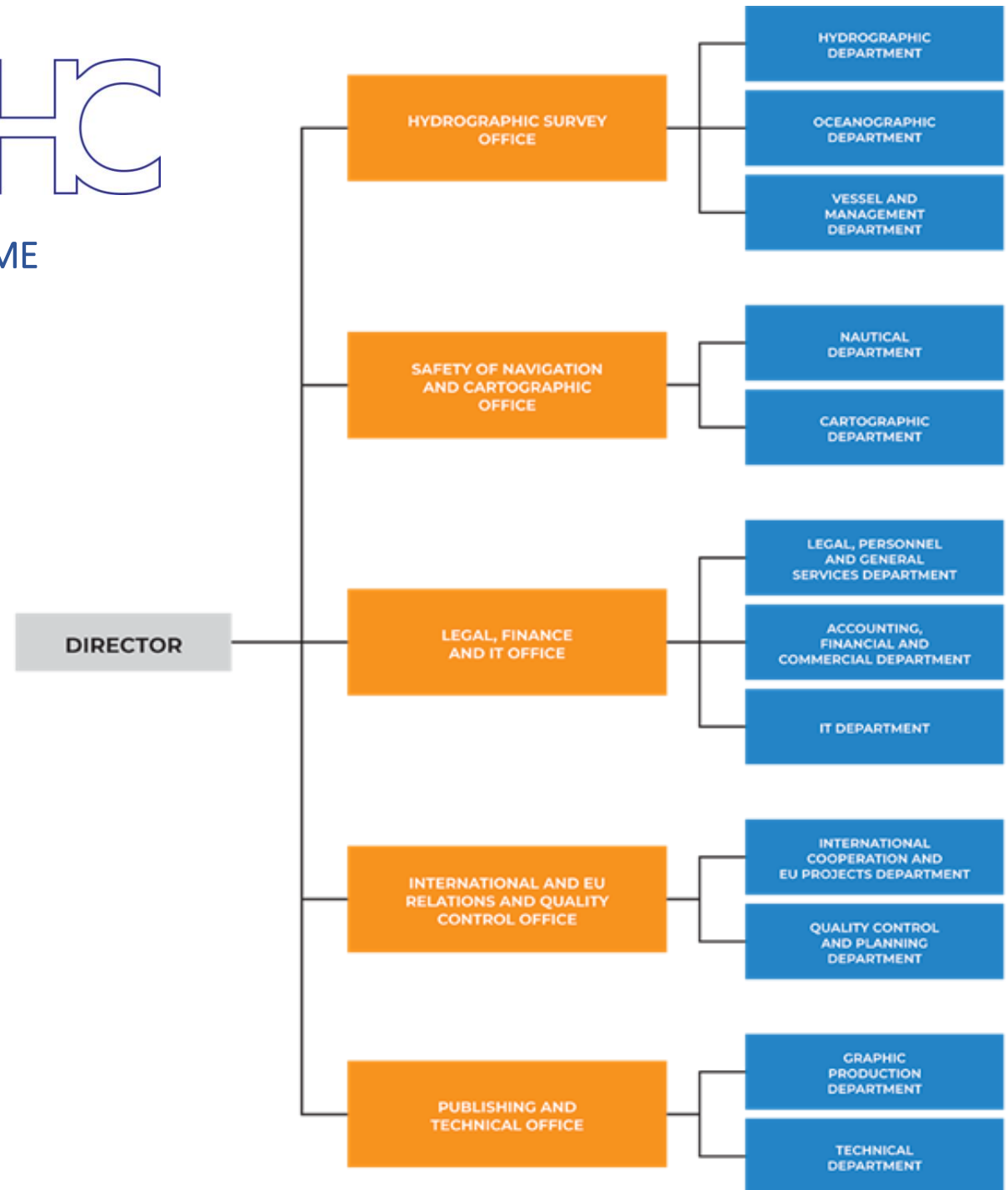
Constanta, Romania  
2 – 4 July 2024

MBSHC24-06.2.2d



## INTRODUCTION – HO STRUCTURE IN NATIONAL MARITIME ADMINISTRATION

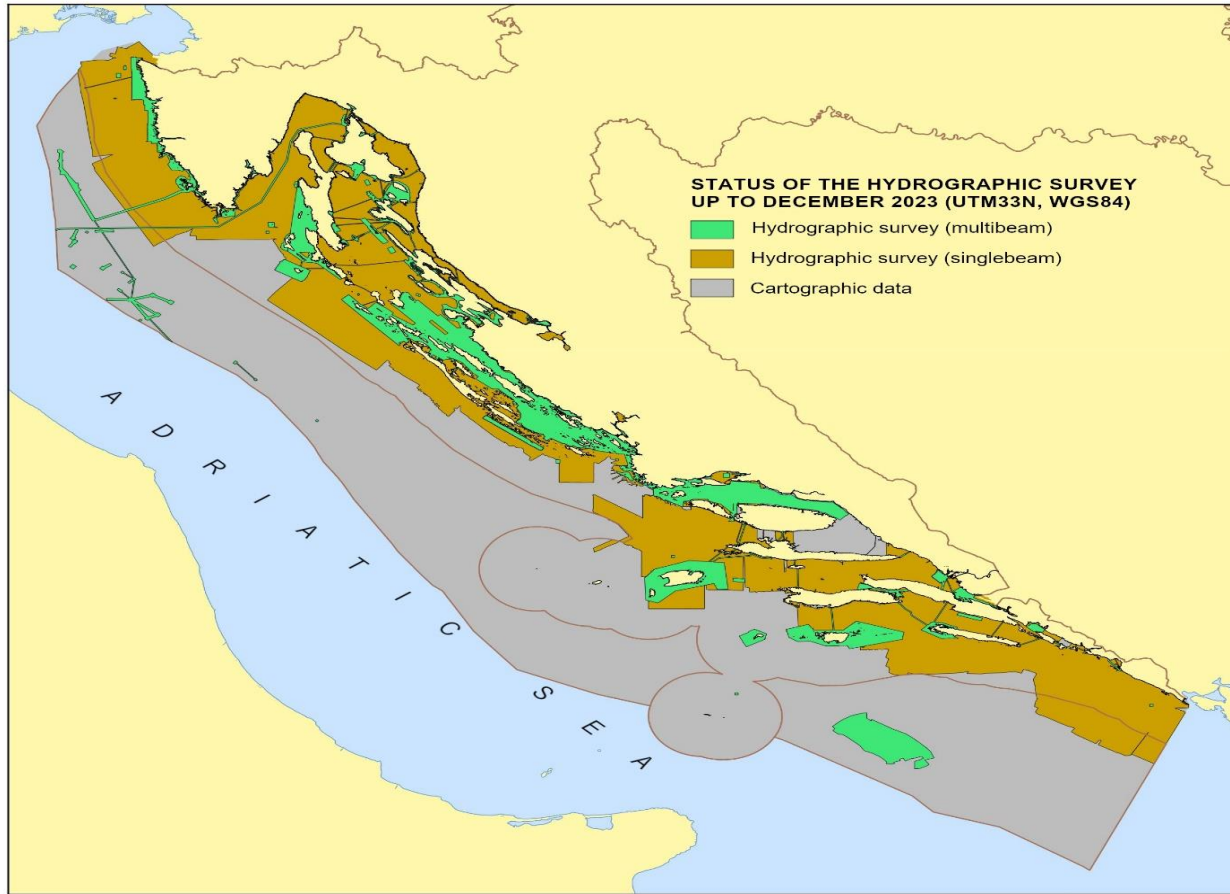
- Under Ministry of the Sea, Transport and Infrastructure
- Public institution
- Law on Hydrographic Activity
- Management Board (8 members)



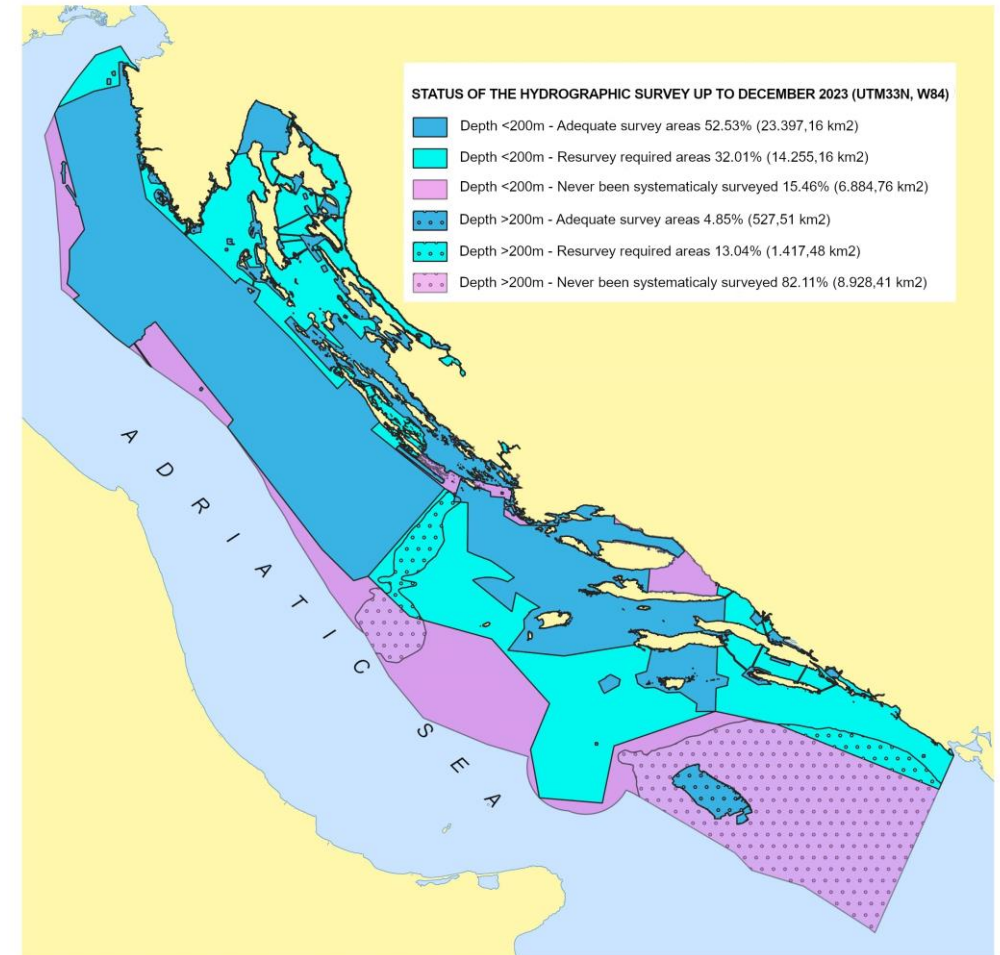
## KEY ACHIEVEMENTS BETWEEN TWO CONFERENCES

- At the 23rd MBSHC Conference the Republic of Croatia took over the two-year chairmanship of the regional Mediterranean and Black Seas Hydrographic Commission from the Kingdom of Spain.
- Chair of the PRIMAR Advisory Committee (PAC) – finished in November 2022.
- For the first time Croatia was selected as a permanent IHO Council member for the period from 2023- 2026.
- In 2022 and 2023, the CHI participated in the implementation of the project **“Service of Mapping Coastal and Seabed Marine Habitats in the Croatian Coastal Sea and Seabed Marine Habitats on the Continental Shelf of Croatia”, as part of the OPCC project Mapping of Coastal and Seabed Marine Habitats in the Area of the Adriatic Sea Under National Jurisdiction – Group 1: Service of mapping coastal sea areas.”** This project covered a surface of 51% of coastal and seabed marine habitats in the Croatian territorial sea and continental shelf, and a complete map was produced to improve knowledge on the state of biodiversity, with the purpose of improving the conservation status of marine eco-systems, restoration of biodiversity, conservation and sustainable use of marine resources.
- Performed one strategical project related to the underwater installations – all data are imported into the Cadastre of the Infrastructure which combines marine data with the Land Cadastre data.
- The European Marine Observation and Data Network (EMODnet) Project
- MED OSMoSIS Project - under SHOM leadership - participation from the side of the CHI
  - Under the project MED OSMoSIS, Pilot study 3 – Navigational warning module S-124 API, the CHI presented its own project of web production and presentation of radio navigational warnings.
- Support to Ministry of Defence – survey for military purposes and AML for the Adriatic Sea under Croatian jurisdiction

- the status of the hydrographic survey according to the criteria in the IHO C-55 publication, indicating the types of survey



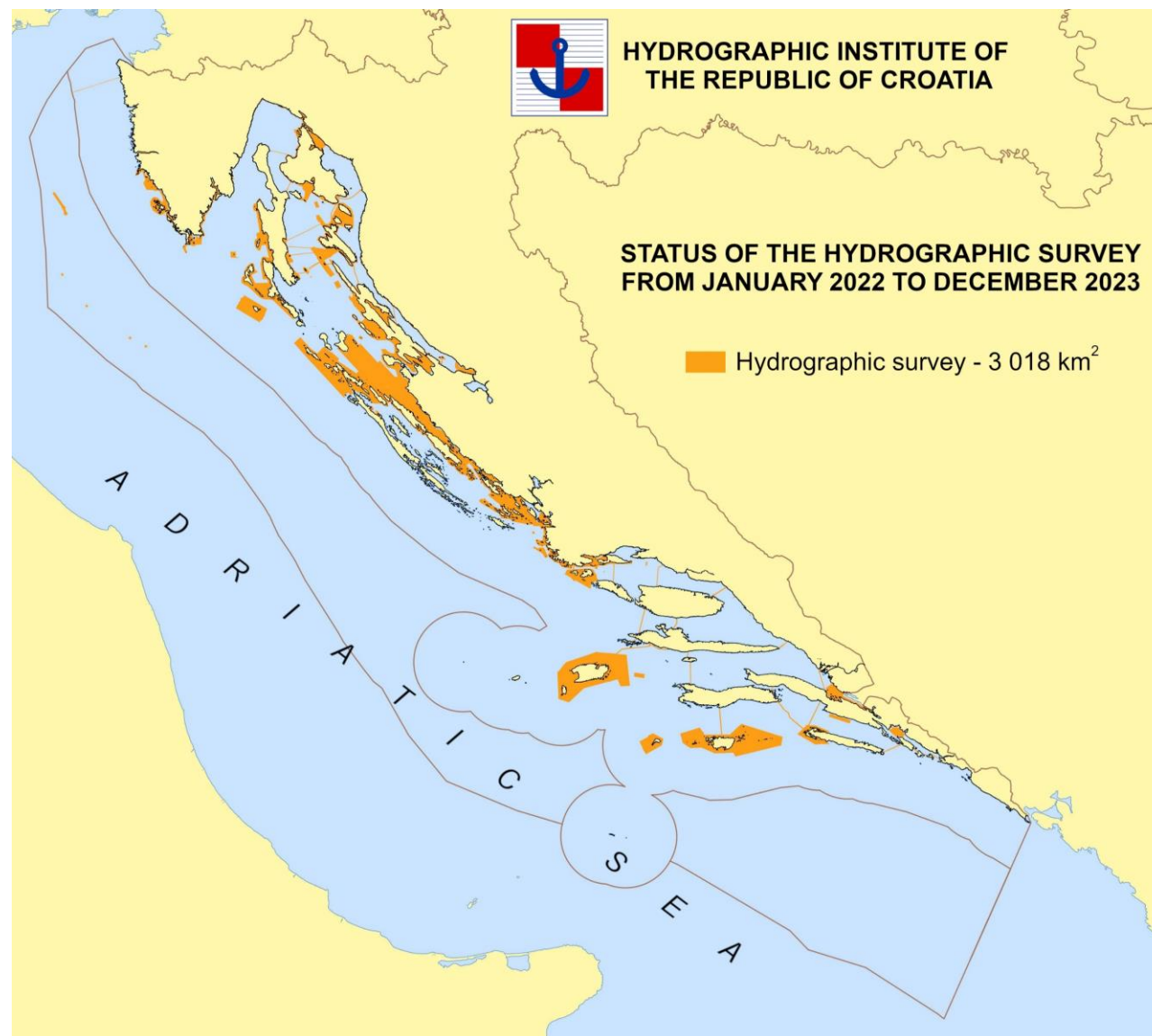
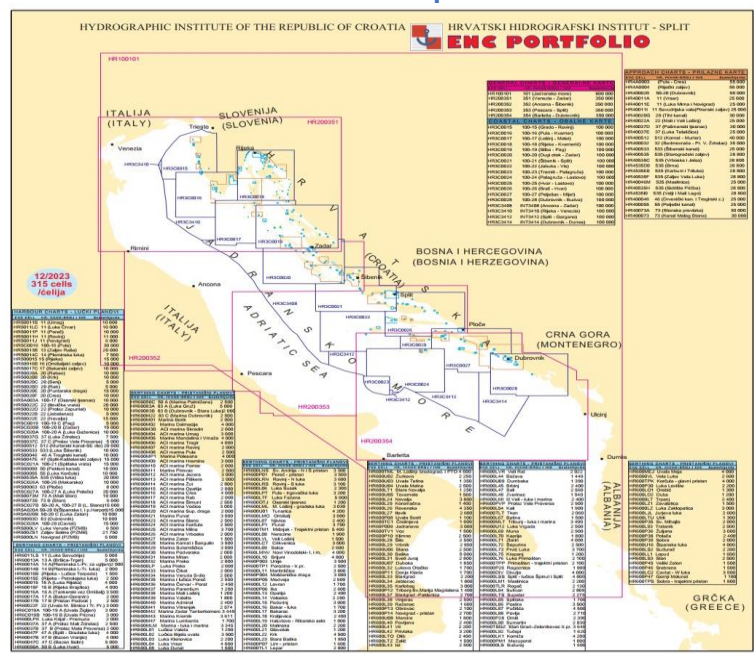
- the status of the hydrographic survey up to 12/2023





# NEW HYDROGRAPHIC SURVEY and ENCs

- Hydrographic surveys conducted along the Croatian coast since the 23rd MBSHC Conference were focused to selective parts of the coastal areas and to principal ports and passages according to the defined priorities.
- Total surveyed area measured by the CHI is 3,018 km<sup>2</sup>.
- New 45 ENC's were released, 134 ENC new editions and 704 updates



# CHARTS - STATUS OF THE CHI ENC PRODUCTION

Usage band	Navigational purpose	1 July 2008.		1 July 2013.		1 May 2017		31. December 2019.		31. December 2020.		31. December 2021.		31. December 2023.	
		No of Cell	Area coverage (%)	No of Cell	Area coverage (%)	No of Cell	Area coverage (%)	No of Cell	Area coverage (%)	No of Cell	Area coverage (%)	No of Cell	Area coverage (%)	No of Cell	Area coverage (%)
1	Overview	1	100 %	1	100%	1	100%	1	100%	1	100%	1	100%	1	100%
2	General	5	100 %	5	100 %	5	100 %	5	100 %	5	100 %	5	100 %	5	100 %
3	Coastal	15	90 %	15	90 %	15	90 %	18	100 %	18	100 %	18	100 %	18	100 %
4	Approach	9	72 %	13	85 %	14	88 %	21	92 %	21	92 %	22	93 %	25	93 %
5	Harbour	31	77 %	37	84 %	40	88 %	44	91 %	44	91 %	45	92 %	49	92 %
6	Berthing	20	74 %	24	85 %	50	87 %	144	95 %	183	96 %	210	97 %	218	98 %
<b>TOTAL</b>		<b>80</b>	<b>87 %</b>	<b>94</b>	<b>92 %</b>	<b>124</b>	<b>93 %</b>	<b>232</b>	<b>95 %</b>	<b>271</b>	<b>96 %</b>	<b>300</b>	<b>97 %</b>	<b>315</b>	<b>98 %</b>

- Most of the overlaps has been resolved.
- There are some remaining minor overlaps in UB3 with the LOW status regarding overall risk severity.
- There is one overlap with MEDIUM risk status in UB3, which is currently being reviewed and resolved.
- Potential new overlaps are continuously monitored and the process of resolving them through negotiations with the respective countries is immediately initiated.

Overlap Report: Croatia Date: 24.03.2024

Nation	RENC	ENC	UB	Edtn	Updt	Scale	Overlap(km²)	Comments
Croatia	PRIMAR	HR100101	1	3	30	800000	6,214.895	
	IC-ENC	GR1OVER1		2	8	1500000		
Croatia	PRIMAR	HR100101	1	3	30	800000	336,732.916	
	IC-ENC	IT100340		5	18	1500000		
Croatia	PRIMAR	HR100101	1	3	30	800000	1,257.028	
	IC-ENC	IT100350		4	1	1500000		
Croatia	PRIMAR	HR200351	2	1	24	350000	44,910.659	
	IC-ENC	IT200435		5	26	700000		
Croatia	PRIMAR	HR200352	2	1	3	350000	4,683.644	
	IC-ENC	IT200434		7	2	700000		
Croatia	PRIMAR	HR200352	2	1	3	350000	26,680.652	
	IC-ENC	IT200435		5	26	700000		
Croatia	PRIMAR	HR200353	2	1	12	350000	34,671.212	
	IC-ENC	IT200435		5	26	700000		
Croatia	PRIMAR	HR200354	2	1	8	350000	50,661.122	
	IC-ENC	IT200435		5	26	700000		
Croatia	PRIMAR	HR3C0015	3	4	2	100000	2.514	
	IC-ENC	IT300039		5	21	90000		
Croatia	PRIMAR	HR3C0028	3	3	20	100000	1,583.817	
	IC-ENC	ME3CMNE1		2	0	90000		
Croatia	PRIMAR	HR3C3414	3	1	2	100000	0.029	
	IC-ENC	ME3CMNE2		1	0	90000		

# NAUTICAL PUBLICATIONS AND OFFICIAL CHARTS

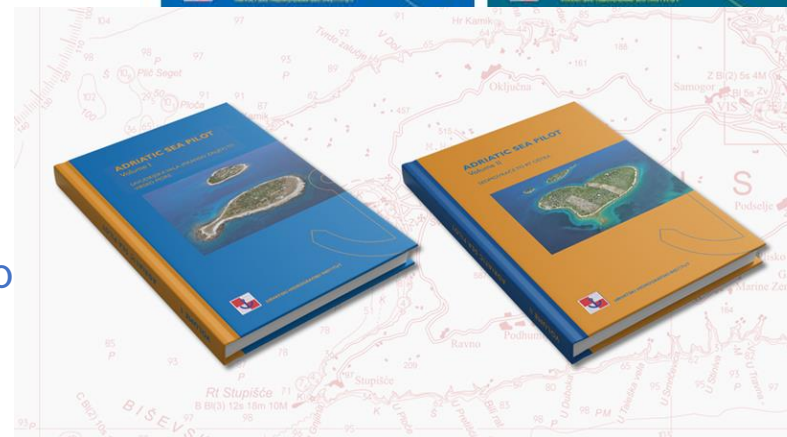
## CHI nautical publications series:

1. Sailing Directions
2. Sailing Directions for Yachts
3. Lists of Lights
4. Radio Service
5. Nautical Almanac
6. Nautical Tables
7. Symbols and Abbreviations (INT1)
8. Notices to Mariners (monthly edition)
9. Catalogue
10. Tide Tables

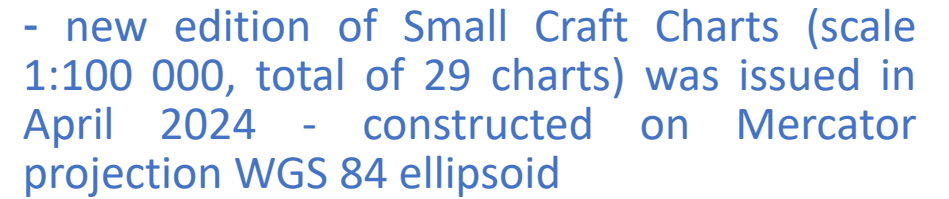
Since the 23rd MBSHC Conference the following publications have been issued:

- Tide Tables 2022
- Tide Tables 2023
- Tide Tables 2024
- Nautical Almanac 2022
- Nautical Almanac 2023
- List of Lights and Fog Signals 2022
- Catalogue of Nautical Charts and Publications 2022/2024 (p and digital editions)
- Notice to Mariners (paper and digital monthly edition)
- Radio Service

## National official nautical publications series



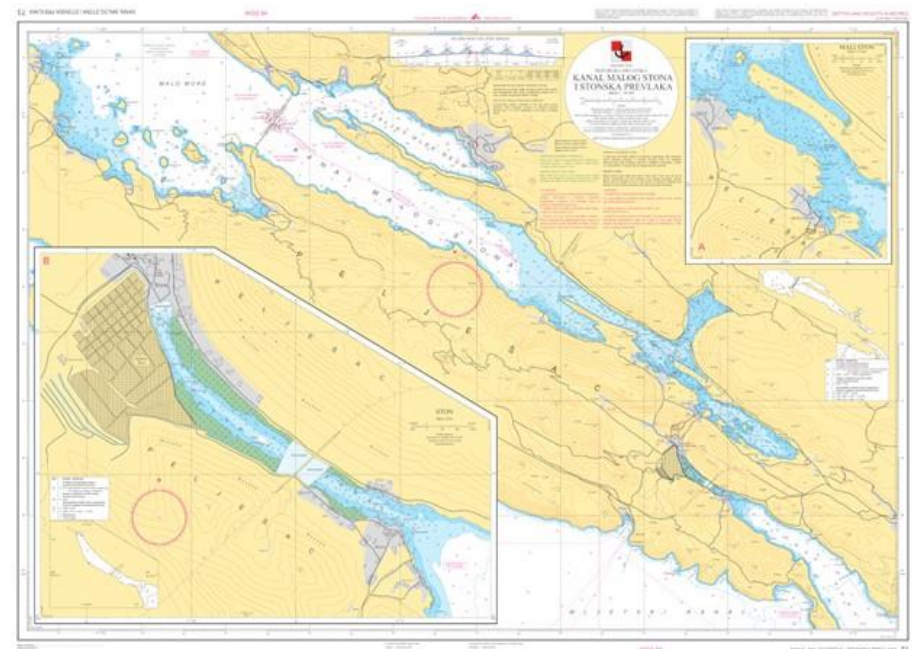
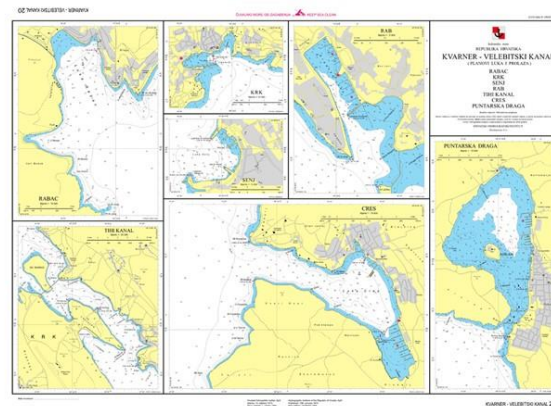




- Revised reprint:

2023: 29 charts and 12 plans

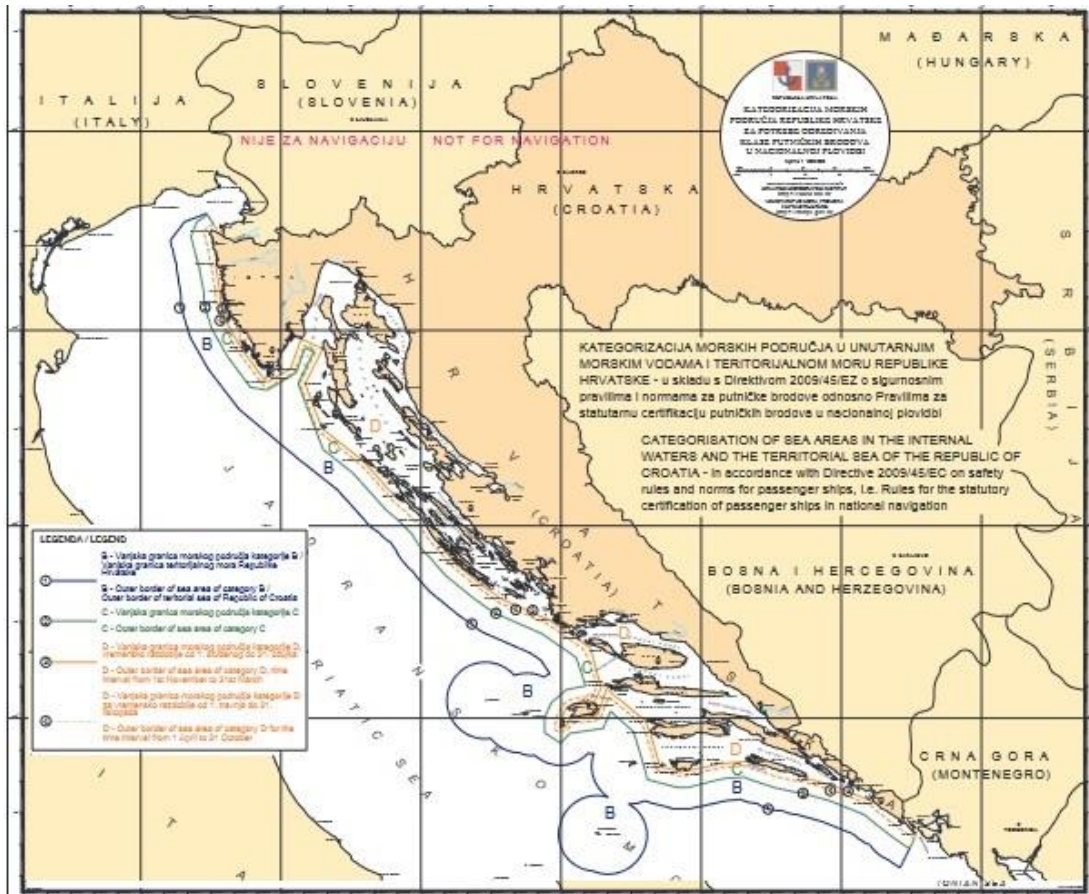
2022: 29 charts and 1 plan



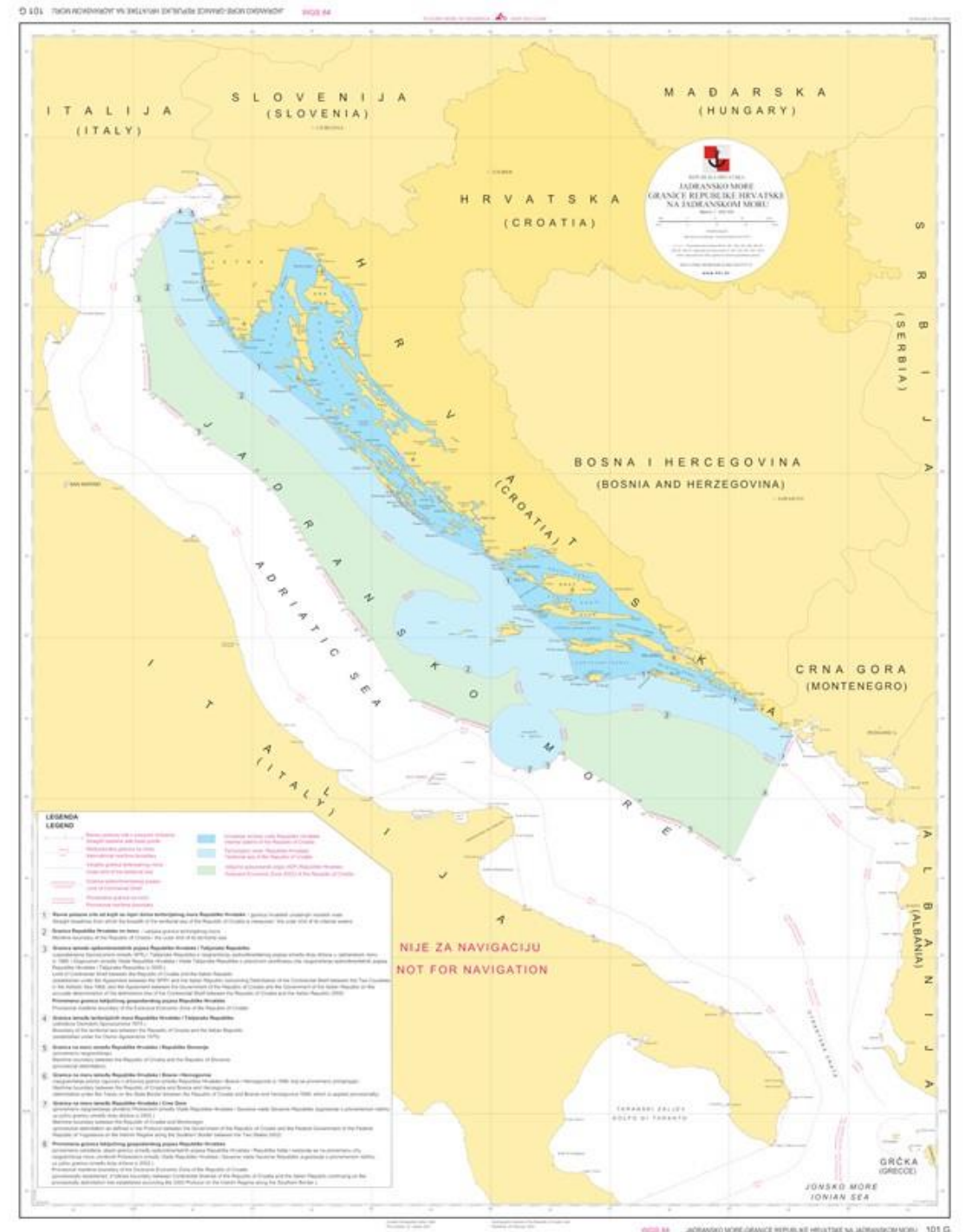


# Thematic Charts

- 101G Maritime Boundaries of the Republic of Croatia in the Adriatic Sea, 1:800 000 (produced in cooperation with the Ministry of the Foreign Affairs)

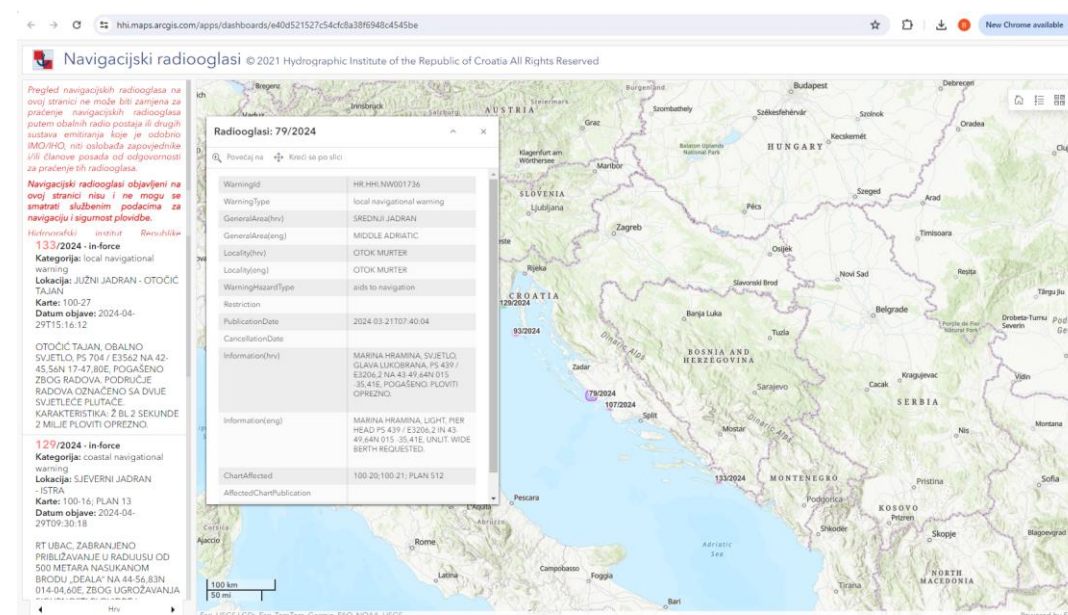
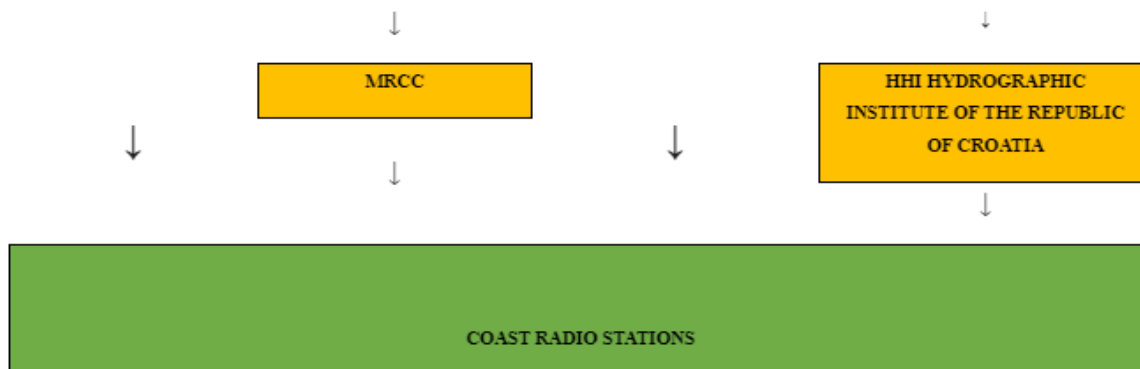


Categorization of sea areas of the Republic of Croatia for the purposes of determining the class of passenger ships in national navigation 1:800 000 (produced in cooperation with the Ministry of the Sea)



## MARITIME SAFETY INFORMATION (MSI)

<p>CROATIAN METEOROLOGICAL AND HYDROLOGICAL  SERVICE  REDOVNA VREMENSKA  IZVJEŠĆA</p>	<p>CROATIAN METEOROLOGICAL AND HYDROLOGICAL  SERVICE  IZVANREDNA VREMENSKA  IZVJEŠĆA</p>	<p>MRCC RIJEKA  HARBOUR MASTER'S OFFICE  NAVIGACIJSKA UPOZORENJA  (VTAL, IMPORTANT)</p>	<p>HARBOUR MASTER'S OFFICE  NAVIGACIJSKI RADIOGLASI  (ROUTINE)</p>
---	--	---	--





- **E-Services of Notice to Mariners and Navigational Warnings are available on the CHI website.**
- **Navigational warnings are updated promptly on the CHI website, as soon as new information is reported and promulgated to mariners by ordinary means (NAVAREA, NAVTEX or VHF)**

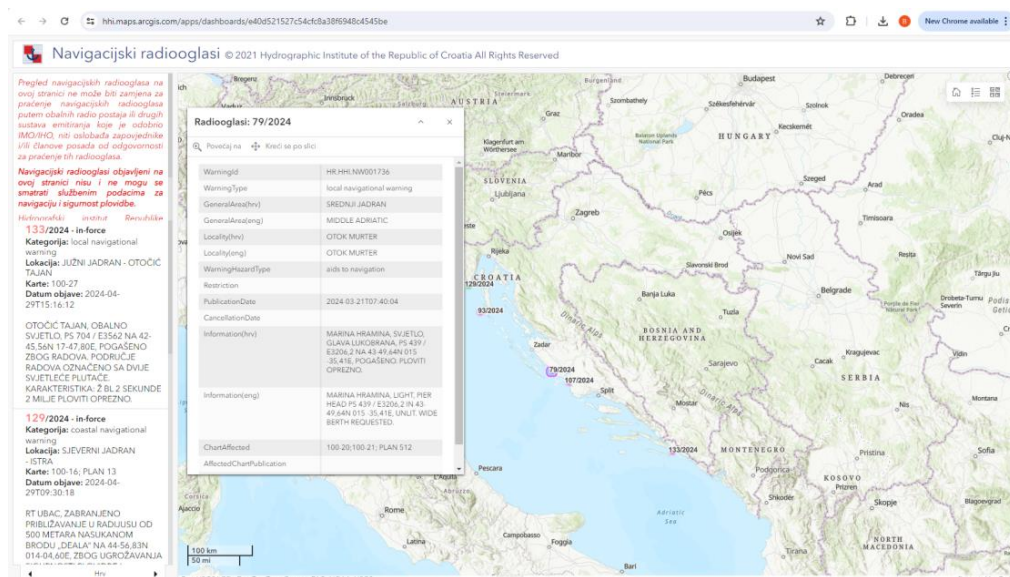
## Radio Navigational Warnings

The Service of Radio Navigational Warnings on this web site may not be a substitute for the monitoring Radio Navigational Warnings through coastal radio stations, of their responsibility to monitor them masters and/or members of the crew.

Information published on the web pages of Radio Navigational Warnings e-Service shall not be considered as official information for the safety of navigation!

### Radio Navigational Warnings in force **29. 04. 2021. 08:19 LT**

ISSUE	RNW
<b>137</b> 2021.	<p><b>Category:</b> COASTAL - NAVTEX <b>Region:</b> ADRIATIC SEA <b>Charts:</b> 101; <b>Date:</b> 29. 04. 2021.</p> <p>1. RADIONAVIGATIONAL WARNINGS IN FORCE 290700 UTC APR 21: 2021 SERIES: 85/21, 92/21, 97/21, 101/21, 105/21, 109/21, 112/21, 113/21, 122/21, 123/21, 128/21, 132/21, 134/21, 136/21. 2. CANCEL RADIONAVIGATIONAL WARNING: 123/21.</p>
<b>136</b> 2021.	<p><b>Category:</b> LOCAL <b>Region:</b> NORTH ADRIATIC - OTOK KRK <b>Charts:</b> 100-18; <b>Date:</b> 26. 04. 2021.</p> <p>BAŠKA PORT ENTRANCE, PRIMARY BREAKWATER UPGRADE WORKS. WIDE BERTH AND 100 METERS DISTANCE FROM BREAKWATER HEAD REQUESTED.</p>
<b>134</b> 2021.	<p><b>Category:</b> LOCAL <b>Region:</b> MIDDLE ADRIATIC - BAŠKA VODA <b>Charts:</b> 100-26; <b>Date:</b> 26. 04. 2021.</p> <p>BAŠKA VODA, BREAKWATER HEAD, PORT LIGHT LL 586 / E3387, IN 43-21,4' N 016-57,1' E, RE-ESTABLISHED. CHARACTERISTIC: FL R 5 SECONDS 7 METERS 4 MILES</p>



Prepoved navigacijskih radiooplasa na ovoj stranici ne može biti zamjena za praćenje navigacijskih radiooplasa putem obalnih radio postaja ili drugih sustava emitiranja koje je odobrio IMO/IHO. niti oslobađa zapovjednike ili članove posade od odgovornosti za praćenje tih radiooplasa.

**Navigacijski radiooplasa objavljeni na ovoj stranici nisu i ne mogu se smatrati službenim podacima za navigaciju i sigurnost plovidbe.**

**133/2024 - in-force**  
**Kategorija:** local navigational warning  
**Lokacija:** JUŽNI JADRAN - OTOČIC TALJAN  
**Karte:** 100-27  
**Datum objave:** 2024-04-29T15:16:12

OTOČIC TALJAN, OBALNO SVJETLO, PS 704 / E3382 NA 42-45.54N 17-47.80E, POGAŠENO ZBOG RADOVA, PODRUČJE RADOVA OZNAČENO SA DVIJE SVJETLECE PLUTACE, KARAKTERISTIKA: 2 BL 2 SEKUNDE 2 MILJE PLOVITI OPREZNO.

**136/2024 - in-force**  
**Kategorija:** coastal navigational warning  
**Lokacija:** SJEVERNI JADRAN - ISTRA  
**Karte:** 100-16; PLAN 13  
**Datum objave:** 2024-04-29T09:30:18

RT UBAC ZABRANJENO PRIBLIZAVANJE U RADIJUSU OD 500 METARA NASUKANOM BRODU: DEJALA NA 44-56.83N 014-04.60E. ZBOG UGRIZAVANJA



## GIS component of RNW Service - Navigational Warnings - (<https://geoadriatic.hhi.hr>)

The Service of Radio Navigational Warnings on this website cannot be a substitute for monitoring Radio Navigational Warnings through coastal radio stations or via other IMO/IHO approved broadcast systems, nor does it relieve masters and/or crew members of their responsibility to monitor these.

Radio Navigational Warnings and all other information published on this page shall not be considered as official information for the safety of navigation.

Hydrographic Institute of the Republic of Croatia will try to keep this site up to date (by adding and cancelling navigational warnings) on working days from 07:30 to 15:30.

**54/2024 - in-force**  
**Category:** local navigational warning  
**Region:** MIDDLE ADRIATIC - ROGOZNICA  
**Charts:** 100-21  
**Date:** 2024-03-01T07:37:30

ROGOZNICA, LIGHTED MARK HRID SKOLJIC, LATERAL STARBOARD SIDE, IN 43-31, 768'N 015-57,957'E (WGS 84), ESTABLISHED. CHARACTERISTIC: G FL (2) 5 SECONDS 6 METERS 1 MILE (0,5+1; 0,5+3)S. OBSURED SECTOR: 215°-319° (104°).

**51/2024 - in-force**  
**Category:** local navigational warning  
**Region:** MIDDLE ADRIATIC - SPLIT  
**Charts:** 100-21; 100-26; PLAN 47  
**Date:** 2024-02-29T08:48:49

TRISTENIK BAY, FROM FEBRUARY 29TH 2024, WORKS ON DRAINAGE SYSTEM FROM EAST PIER OF ZENTA PORT TOWARDS SOUTH AND OPEN SEA, IN A LENGTH OF 400 METERS. APPROACHING THE CONSTRUCTION SITE IN A RADIUS OF 0,1 MILES, PROHIBITED. WIDE BERTH REQUESTED.

**47/2024 - in-force**  
**Category:** local navigational warning  
**Region:** NORTH ADRIATIC - SUSAK ISLAND  
**Charts:** 100-16; 100-17  
**Date:** 2024-02-21T11:04:01

SUSAK PORT, LIGHTED BUOY, SPECIAL MARK IN 44-30,917'N 014-18,798'E (WGS 84), ESTABLISHED. CHARACTERISTIC: FL Y 2 SECONDS 2 MILES. NAVIGATION BETWEEN RT KURILICA (SUSAK ISLAND) AND BUOY.

Hrv Eng Izjava o pristupačnosti

**Radiooglas: 51/2024**

Zoom to + Part

WarningId	HR-HH.NW001718
WarningType	local navigational warning
GeneralArea(hrv)	SREDNJI JADRAN
GeneralArea(eng)	MIDDLE ADRIATIC
Locality(hrv)	SPLIT
Locality(eng)	SPLIT
WarningHazardType	pipe or cable laying operations
Restriction	
PublicationDate	2024-02-29T08:48:49
CancellationDate	
Information(hrv)	UVALA TRISTENIK OD 29. VELJACE 2024. RADOVNI NA IZGRADNJI SUSTAVA ODVOĐNJE OD ISTOČNOG MULA LUČICE ZENTA U SMJERU JUGA PREMA OTVORENOM MORU, U DUŽINI OD 400 METARA. ZABRANA Približavanja gradilištu na udaljenosti od 0,1 milje. Ploviti oprezno.
Information(eng)	TRISTENIK BAY, FROM FEBRUARY 29TH 2024, WORKS ON DRAINAGE SYSTEM FROM EAST PIER OF ZENTA PORT TOWARDS SOUTH AND OPEN SEA, IN A LENGTH OF 400 METERS. APPROACHING THE CONSTRUCTION SITE IN A RADIUS OF 0,1 MILES, PROHIBITED. WIDE BERTH REQUESTED.
ChartAffected	100-21; 100-26; PLAN 47

5 km  
5 mi

Esri, NASA, NGA, USGS | GD, Esri, TomTom, Garmin, Foursquare, METI/NASA, USGS

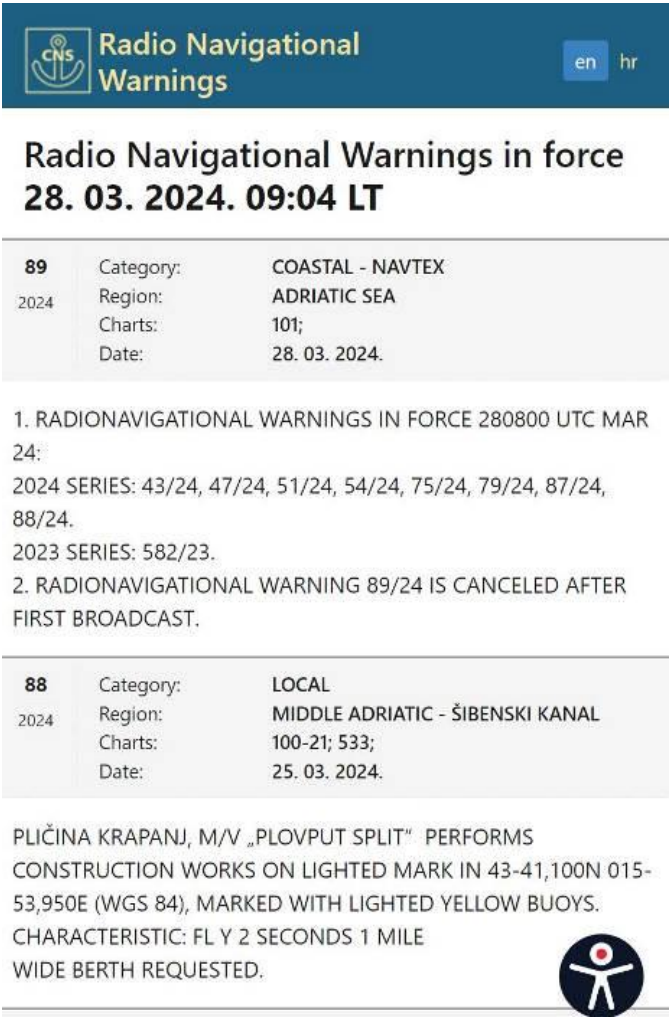
Powered by Esri

# Mobile application Cro Nav Support

A new Cro Nav Support mobile application has been introduced, which brings the content to smartphones as well. The main contents are NtM and RNW. The application itself is accessible to people with disabilities, especially to people with dyslexia. (<https://cns.hhi.hr>)



CNS – Home screen



CNS – RNW screen



IHO

International  
Hydrographic  
Organization

## MSDI / Geoportal GeoAdriatic - Croatian Marine Spatial Data Portal

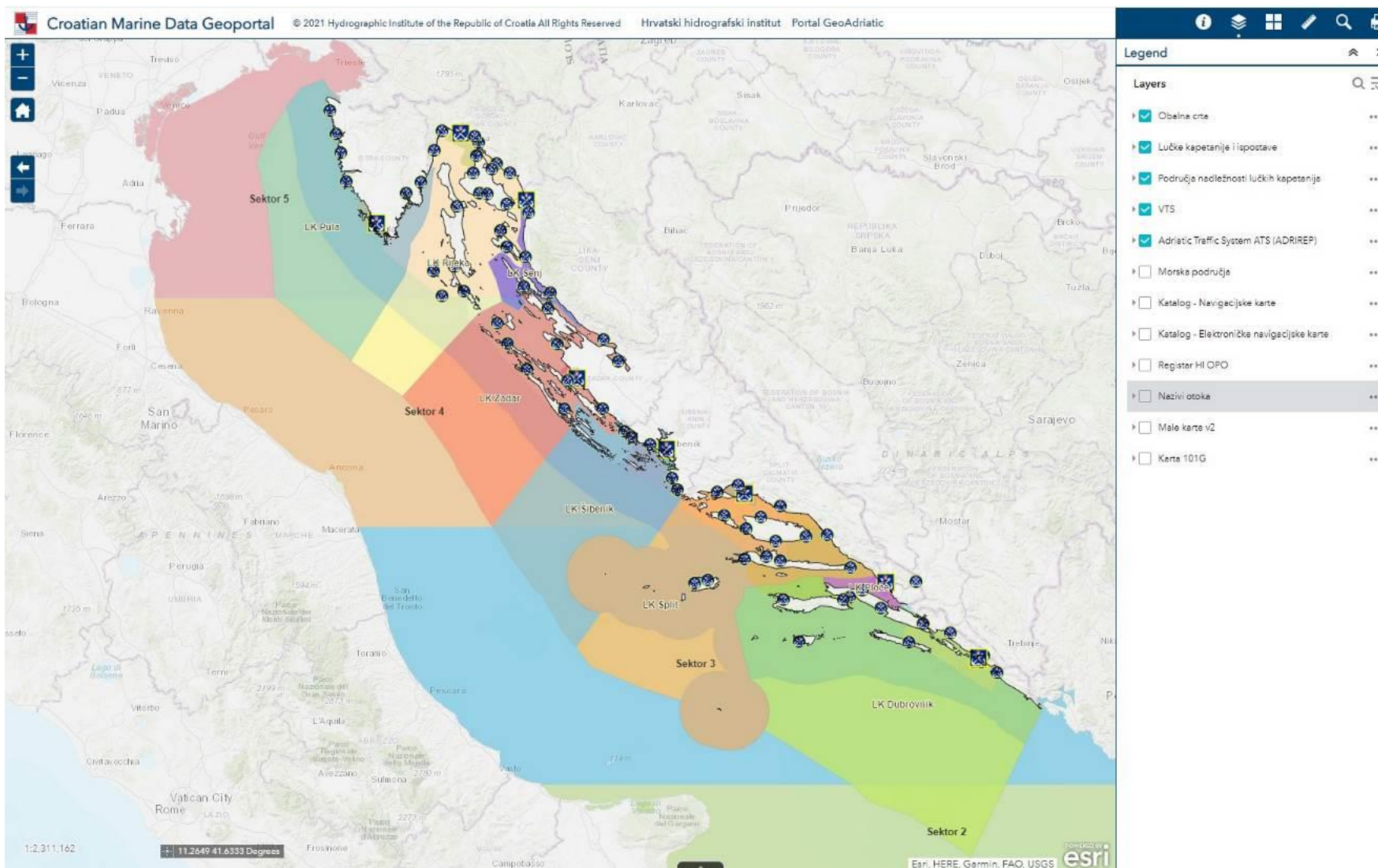
The screenshot displays the GeoAdriatic website interface, which is the Croatian Marine Spatial Data Portal. The top navigation bar includes links for Home, News, Content, Contact, and HR. The main content area features several interactive maps and data visualizations:

- Croatian Marine Data Geoportal Cro MSDI:** A map showing the coastline of Croatia with various data layers.
- Geoportal for Mariners and Sailors:** A map showing the Adriatic Sea with various data layers.
- Navigational Warnings:** A map showing the Adriatic Sea with various data layers.
- Official Hydrographic Survey Browser:** A map showing the Adriatic Sea with various data layers.
- Register of Hydrographic Surveys by Authorized Legal Entities:** A map showing the Adriatic Sea with various data layers.
- Adriatic Sea - Operational Oceanography Portal:** A map showing the Adriatic Sea with various data layers.
- Croatian Navigational Chart Coverage Catalogue:** A map showing the Adriatic Sea with various data layers.

- The CHI develops and maintains a MSDI, covering all maritime areas under Croatian jurisdiction.
- The information thus compiled is freely accessible on CHI's data portal GeoAdriatic – Croatian Marine Spatial Data Portal (<https://geoadriatic.hhi.hr/>).



## Croatian Marine Spatial Data Portal

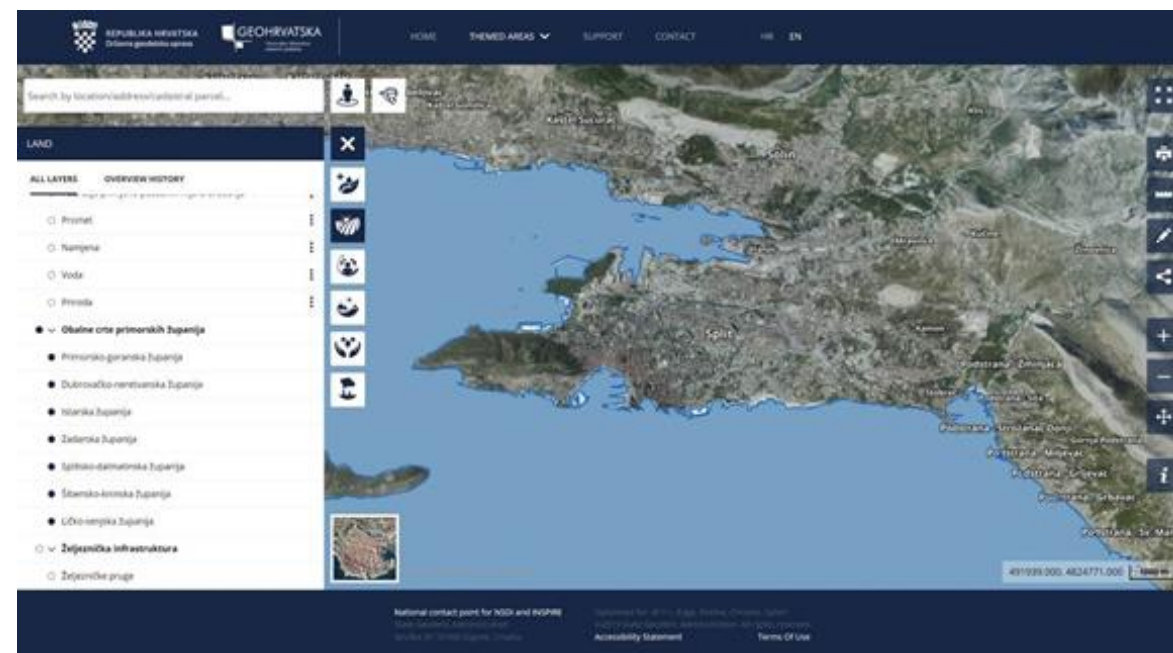
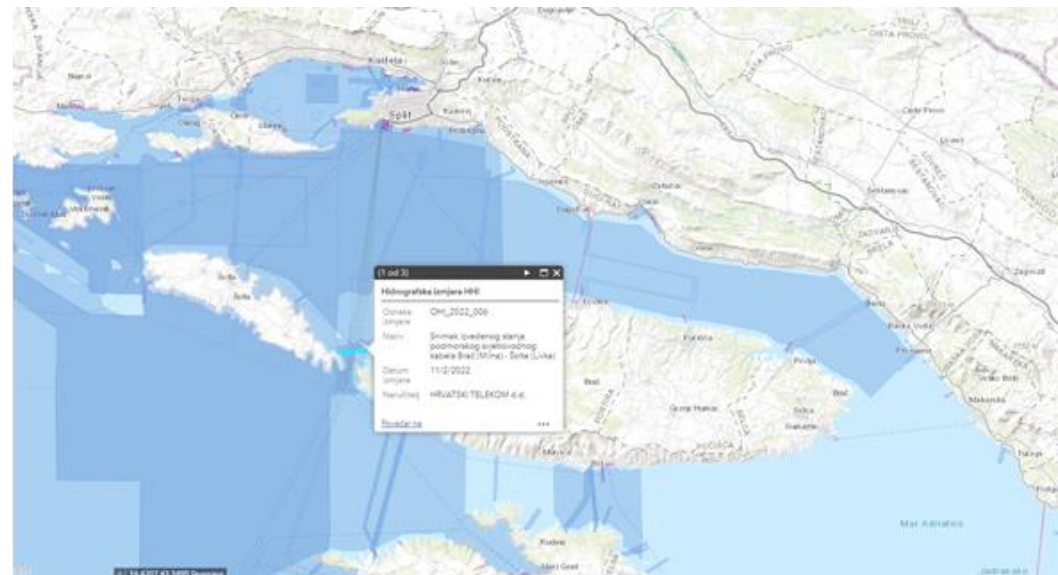


The data are organized to cover the following topics:

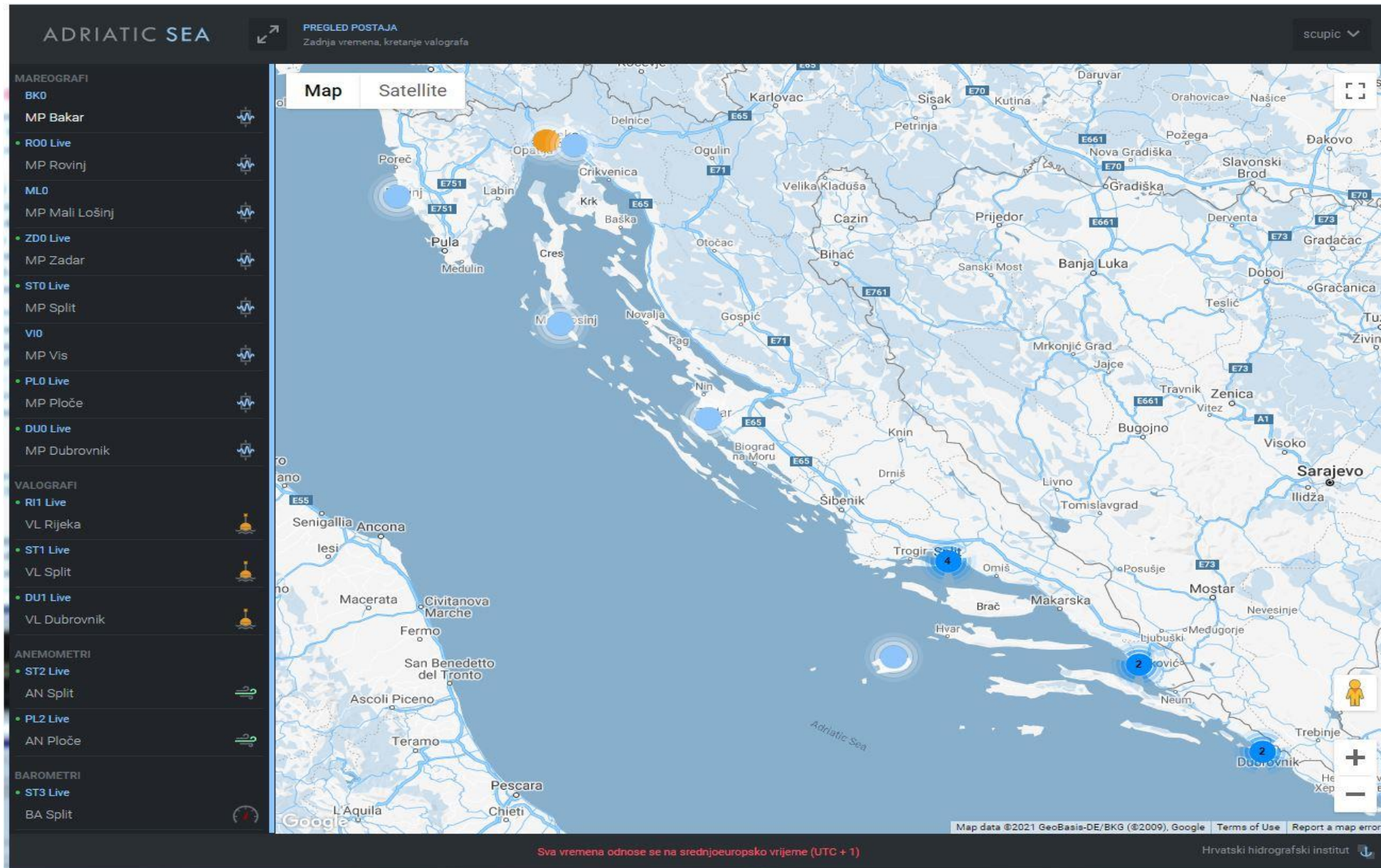
- Croatian Marine Data Geoportal Cro MSDI
- Geoportal for Mariners and Sailors
- Navigational Warnings
- Official Hydrographic Survey Browser
- Register of Hydrographic Surveys by Authorized Legal Entities
- Adriatic Sea – Operational Oceanography Portal
- Croatian Navigational Chart Coverage Catalogue
- Radio Navigational Warnings (WEB)
- Notice to Mariners (NtM)

The Portal is constantly populated with new data and services:

- Small Craft Charts (Adriatic Sea – Eastern coast) – WMTS
- Harbour master's offices and branch offices – WFS
- Harbour master's administrative areas – WFS
- Catalogue of Charts – WFS
- Catalogue of Official Electronic Navigational Charts (ENC) – WFS
- Catalogue of Official Electronic Navigational Charts (ENC) – WFS
- Marine areas of the Adriatic Sea – WFS
- Traffic separation scheme – WFS
- Vessel Traffic System administrative areas – VTS
- Coastline (by Counties) – WFS
- Hydrographic surveys
- Navigational warnings

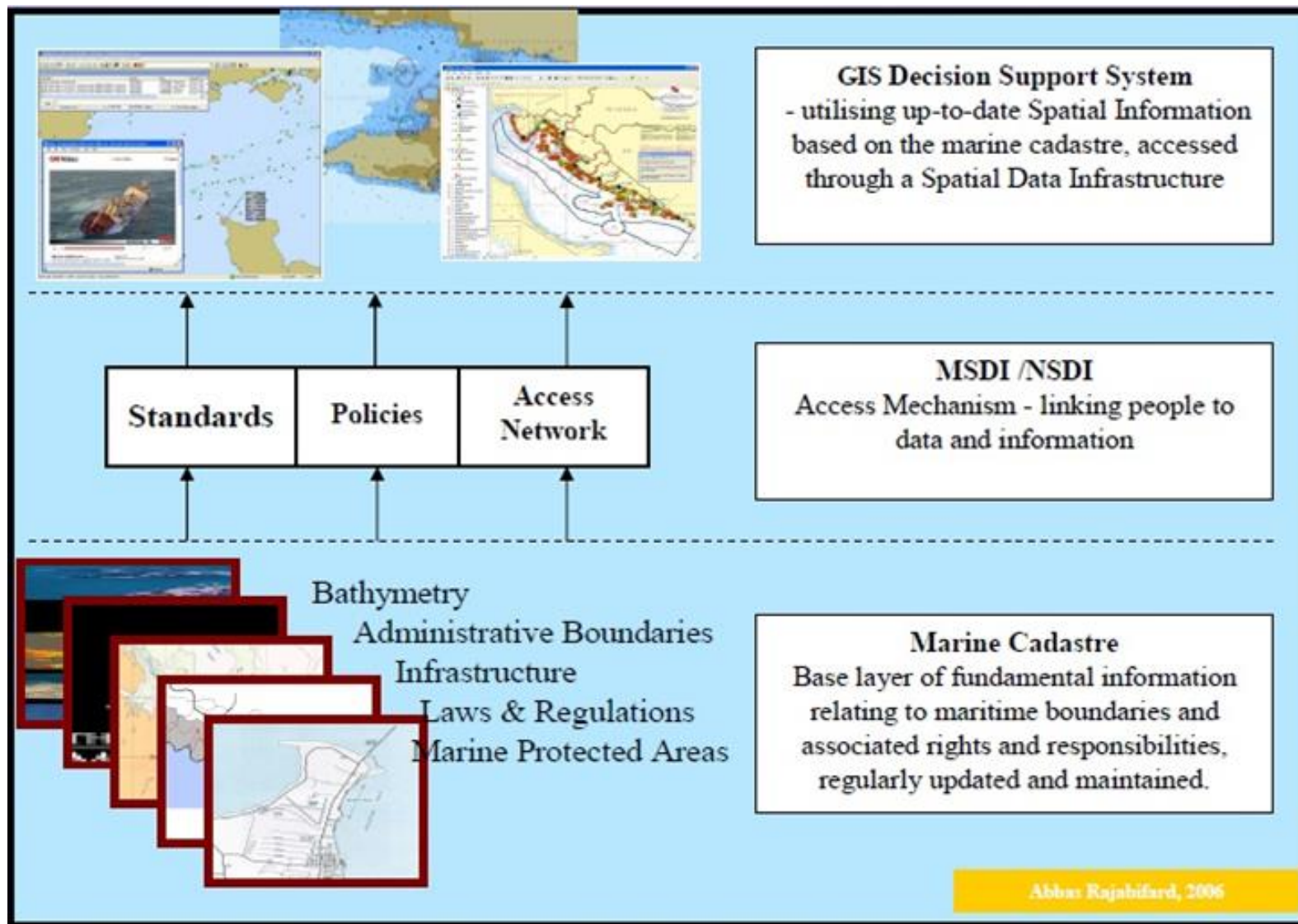






Oceanographic data acquisition system  
Operational  
Oceanography Portal –  
Adriatic Sea Online is available on the new Institute website  
<http://adriaticsea.hhi.hr>  
- real time measurements from tide gauge stations (Rovinj, Zadar, Split, Ploče, and Dubrovnik)  
- waverider stations in the Adriatic (Dubrovnik, Ploče, Split, and Rijeka)  
The application provides the ability to download measured data from web page directly.  
CHI's intention is to establish new measuring stations and further upgrade the web application.





➤ In Croatia, **Marine Spatial Data Infrastructure (MSDI)** is a component of **National Spatial Data Infrastructure**, so currently the CHI provides metadata to the Croatian NSDI Geoportal that serves as a starting point for accessing spatial data sources that are, according to the NSDI Act (Official Gazette 56/2013), part of National Spatial Data Infrastructure (<http://geoportal.nipp.hr/en>).

➤ **In future**, the CHI plans to set up a conceptual framework for Croatian MSDI with other providers of marine data and partners. This includes building of a MSDI reference model and evaluating Metadata & Data geoportal.



## CAPACITY BUILDING ACTIVITIES/TRAINING

- Capacity building activities and training is the most important if we want to be in line with development in hydrographic field. The CHI carries out training and capacity building activities on a continuous basis.
- A total of 16 employees have registered to participate in a series of S-100-based online training courses organized by PRIMAR for its Member States.
- Participation in a training course on Teledyne Reson T-50R Multibeam Sonar System Calibration and Testing (Murter, February 2022).
- Participation in a training course on EdgeTech 4205 Side-scan Sonar System Training (Split, December 2023).
- Participation in training courses on cartographic data management and Marine Spatial Data Infrastructure (MSDI).
- Participation in a four-day seminar Python programming language, one-day seminar about GIMP application.
- Participation in the Short Course on Marine Data Literacy, an intensive preparatory course on marine data offered by the European University of the Seas.
- Participation in the workshop on MSDI Development & Implementation funded by the IHO CB Fund (Istanbul, 7–9 May 2024).
- One CHI employee is participating in Category B Hydrographic Survey Programme at the Korea Hydrographic and Oceanographic Agency (KHOA) in Busan, from 17 June to 1 November 2024. This opportunity was offered by the IHO – Republic of Korea Programme of Technical Cooperation.
- Participation in professional webinars and trainings, conferences, meetings, participation in work of the IHO WG, Hydro 22 Conference and EMODnet Meeting, Hydro 23 Conference, Oceanology International 2024, Third CHART Project Alumni Seminar, participation at IHO Assembly, IHO Council, HSSC etc.

## THE MOST IMPORTANT BILATERAL AND MULTILATERAL ACTIVITIES



Meeting of maritime administrations of Croatia, Slovenia, Bosnia and Herzegovina, and Montenegro in Split



Meeting with the representatives of the Hydrographic Office of Spain



Meeting with the representatives of the IHO



## THE MOST IMPORTANT BILATERAL AND MULTILATERAL ACTIVITIES

### CHI-IHO-EMPA-CMPA-MMPI meeting

Following the example of other renowned hydrographic offices, regarding cooperation with maritime pilots, being important end users of S-100 products and participants in implementing the S-100 standard, **the CHI signed an Agreement on technical cooperation with the Croatian Maritime Pilots' Association**, relating specifically to the testing of future S-100 products. The EMPA/CMPA representative praised the initiative and cooperation with maritime pilots, and emphasized the importance of implementing the S-100 model and testing the new products, especially S-101 (ENC) and S-102 (bathymetry)



PAC 29 meeting in Split

# MAIN CHALLENGES

- One of the main challenges for the CHI will be transition to the new generation of ENC, produced according to S-101 standard. The issue is almost equally demanding in organisational, technical-technological, and financial terms as the issue of transition from paper versions of navigational charts to digital ones (ENC).
- The transition issue is additionally complicated by the fact that it will be necessary to ensure maintenance and availability of both ENC generations (Dual Fuel) for several years. Some initial tasks are assigned to responsible staff which cooperates closely with PRIMAR and ECC staff through several initiated and approved S-100 projects..
- Training is recognized as a key element for realization of transition from S-57 to S-100 series products and services
- Renewal of the fleet - in the process of conducting a study on the fleet renewal
- Lack of the capacities
- Awareness rising among different and important stakeholders related to the implementation of the S-100
- Testing of the future S-100 products, especially S-101 and S-102 in cooperation with Pilots
- MSDI activities
- Further activities and opening of the data through the Geoportal GEOADRIATIC – in line with the INSPIRE DIRECTIVE

- Under the circumstances of limited overall resources (human, material and financial), it can be concluded that the status of hydrographic-navigational element of the navigational safety is at a good level.
- Entire area of charting responsibility has been covered by relevant official editions of navigational charts and publications – paper and digital ones. This particularly applies to navigation areas of SOLAS ships.
- CHI is continuously oriented towards increasing the number of ENC's by publishing ENC's of marinas and small harbours based on the new hydrographic survey.
- Entire ENC folio has been made available to mariners and to maritime administration worldwide through PRIMAR RENC.
- ENC's have been made available on the Croatian Navy vessels through the Navy Agreement and to the fleet of the Ministry of the Sea, Transport and Infrastructure.
- Agreements have also been concluded with the maritime administrations and Croatian Navy on ENC usage for administrative-office purposes (WMS for ENC's).
- Navigational warning service is in good working order, efficiently cooperating with all navigational safety entities in Croatia, its neighbouring countries and the NAVAREA III coordinator.





- Paper editions of official navigational charts are updated through monthly editions of Notices to Mariners, and ENC's through weekly updates.
- Recognizing a wider use of hydrographic data, CHI maintains and constantly improves established licensing model keeping in mind obligations arising from the public service information regulations.
- CHI continuously participates in multiple projects designated by the competent administrations, providing high quality support.
- By participation in IHO Council, several bodies and WGs of the IHO and PRIMAR RENC, the CHI maintains its role and contributes on realisation of established objectives of those organizations
- Achievement of main strategic and programme objectives in the current and next planned periods will be challenging in every respect, because it is expected to proceed in very restrictive conditions with additional requirements and tasks.



# Actions required from the MBSHC

- Note this presentation.
- Note the full CRO NR.