



MINISTRY OF ECONOMY AND SUSTAINABLE DEVELOPMENT OF GEORGIA



STATE HYDROGRAPHIC SERVICE OF GEORGIA



NATIONAL REPORT MEDITERRANEAN AND BLACK SEAS HYDROGRAPHIC COMMISSION (MBSHC24)

GEORGIAN TERRITORY AND RESPONSIBILITY OF GSHS

- Under Georgian jurisdiction there are about 25 540 square km. of maritime territory.
- The total length of Georgian Coastline is about 169 nautical miles.
- There are six ports in Georgian coast:

- Port of Batumi

- Port of Poti

- Port of Supsa (SPM)

- Port of Kulevi

- Port of Ochamchire (occupied by RF)

- Port of Sokhumi (occupied by RF)

- Port of Anaklia (under construction)



STRUCTURE OF STATE HYDROGRAPHIC SERVICE OF GEORGIA



DIVISION OF HYDROGRAPHIC SURVEY AND CARTOGRAPHY

Main duties of Department Hydrographic research and Cartography:

- Hydrographic and Oceanographic surveys.
- Land Survey.
- Charting Paper and ENC charts.
- Publish “Notices to Mariners” and “Nautical Publications.”

DIVISION OF HYDROGRAPHIC SURVEY AND CARTOGRAPHY

■ New Survey Boats:

- Survey Catamaran for Hydrographic Survey, Equipped with Multibeam Echosounder (Seabat T50, “GAGRA SURVEY”, 8m).



- Survey Catamaran for Hydrographic Survey, Equipped with Multibeam Echosounder (Seabat T50, “KOLKHIDA”, 9m) - Donated by Korean Hydrographic and Oceanographic Agency.



- Small boat (“PSOU”4.55m), for service and Singlebeam survey



- Small boat (“ZHOEKVARA”) for maintenance service.



NEW CHARTS AND UPDATES

Georgian waters are currently covered by 10 paper charts and 7 ENC's. GSHS continuous improving his National and International Charting.

- ENC's
Distribution Agreements with PRIMAR.

INT NO	PROD	SCALE	MAIN TITLE	CHART LIMIT			
GE410110	GE	10 000	Batumi Port with Approaches	41°37.6'N	41°42.39 N	41°36.57'E	41°41.4'E
GE410325	GE	22 000	Poti Port with Approaches	42°00.5'N	42°12.89'N	41°33.0'E	41°45.4'E
GE510420	GE	20 000	Kulevi Port with Approaches	42°11'N	42°18'N	41°31.4'E	41°42'E
GE610405	GE	5 000	Kulevi Port	41°38.96'N	41° 39'.48N	41 °39'.46E	41° 39'.93E
GE610105	GE	5000	Batumi Port	41°38.7171'N	41°41.1341'N	041°38.00'E	041°41.55'E
GE310300	GE	300 000	Georgian Coast, Sarp to Leselidze	43°24.00'N	41°30.50'N	38°40.00'E	41°55.00'E
GE610305	GE	5000	Poti Port	42°10.7333'N	42°07.8983'N	41°35.4533'E	41°39.'E

CHARTS AND UPDATES

National paper charts:

- International and national chart catalogue.

NO	INT_NO	PROD	NAT_NO	SCALE 1:	MAIN_TITLE	CHART_LIMITS			
						LIMIT_S	LIMIT_N	LIMIT_W	LIMIT_E
1	3871	GE	GE 101	10 000	BATUMI PORT WITH APPROACHES	41°37.60'N	41°42.39'N	41°36.57'E	41°41.40'E
				5 000	A- BATUMI PORT	41°38.70'N	41°39.18'N	41°38.53'E	41°39.50'E
2	3872	GE	GE 102	50 000	GEORGIAN COAST FROM RIVER SUPSA TO RIVER TSOROKHI	41°35.40'N	42°01.50'N	41°24.50'E	41°49.83'E
3	3873	GE	GE 103	25 000	POTI PORT WITH APPROACHES	42°00.50'N	42°12.98'N	41°33.00'E	41°45.40'E
				10 000	A-POTI PORT	42°08.90'N	42°10.98'N	41°37.88'E	41°39.92'E
4	3876	GE	GE 104	20 000	KULEVI PORT WITH APPROACHES	42°11.00'N	42°18.00'N	41°31.40'E	41°42.00'E
				5 000	A-PORT KULEVI	42°16.38'N	42°16.60'N	41°37.78'E	41°38.54'E
				5 000	B-CHANEL KULEVI	42°16.50'N	42°17.00'N	41°37.10'E	41°37.86'E
5		GE	GE 100	50 000	PORT HOPA TO RIVER CHOROKHI	42°16.50'N	42°17.00'N	42°17.00'N	42°17.00'N
6		GE	GE 11	300 000	GEORGIAN COASTLINE SARP TO LESELIDZE	41° 23.00'N	41°37.00'N	41°13.00'E	41°38.00'E
7		GE	GE 105	100 000	FROM PORT BATUMI TO RIVER ENGURI	41°37.00'N	42°28.00'N	41°010.00'E	41°57.00'E
8		GE	GE 108	25 000	SOKHUMI PORT WITH APPROACHES	42°54'N	43°01'N	40°53.6'E	41°05.9E
					A-SOKHUMI PORT				
9	3808	GE/TR	GE10/TR143	300 000	PORT OCHAMCHIRA TO PORT TIREBOLIA	42°52.00'N	42°48.00'N	038°40.00'E	042°10.00'E
10		GE	GE 1	1 500 000	BLACK SEA AND SEA OF AZOV	41°30.50'N	47°25.00'N	41°60.000'E	27°20.00'E

NEW TECHNOLOGIES AND/OR EQUIPMENT

- Single-Beam Echosounder Odom MK-III for deep sea (Donated by KHOA).
- Multibeam Echosounder Reson Seabat T50R (Donated by KHOA).
- Dron for land survey (Donated by KHOA).
- TRBM equipted with ADCP (Donated by KHOA).
- Installed 2 Tide station (Batumi port and Poti port) (Donated by KHOA).



NEW TECHNOLOGIES AND/OR EQUIPMENT

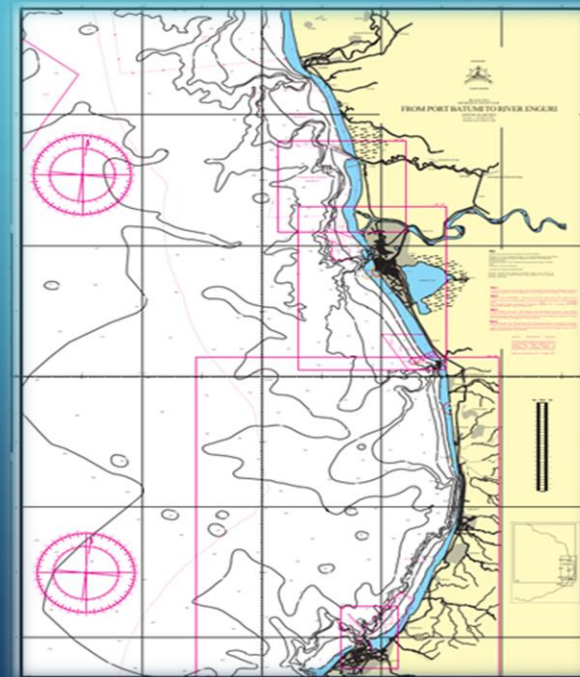
Softwares:

- D-Kart Office (Editor, Publisher, Inspector)
- Hypack
- PDS-2000
- Arc GIS
- CARIS paper Chart Composer (Donated by KHOA)
- CARIS S-57 Composer (Donated by KHOA).

CHARTS AND UPDATES

The following charts are updated:

- Paper chart GE103 (Poti port with approaches);
- Paper chart GE100 (Port Hopa to River Chorokhi);
- Paper chart GE105 (From port Batumi to River Enguri);
- Created and released new ENC chart of Kulevi GE610405, Band 6 (Supported by KHOA);
- Created and released new ENC chart of Batumi GE610105, Band 6 (Supported by KHOA).
- Created new ENC chart of Poti GE610305, Band 6 (Supported by KHOA).



INTERNATIONAL HYDROGRAPHIC ORGANIZATION (IHO)/AND WITHIN THE FRAMEWORK OF THE ODA (OFFICIAL DEVELOPMENT ASSISTANCE) PROJECT CAT "B" TRAININGS/ON THE JOB TRAINING

- One employee passed trainings of IHO for B category hydrographic survey program in Hydrographic and Oceanographic Agency of South Korea and was awarded with B category hydrographic surveyor certificate.
- One employee completed a 5-month training course at the South Korean Oceanography and Hydrography Agency (KHOA) in the frame of International Hydrographic Organization (IHO) training program.
- Two employee attended one month job training at South Korea Hydrography and Oceanography agency. Above mentioned training was held in the frame of ongoing project of „Development of hydrographic infrastructure in Georgia" . The training comprised one month course of cartography and Hydrographic Survey.



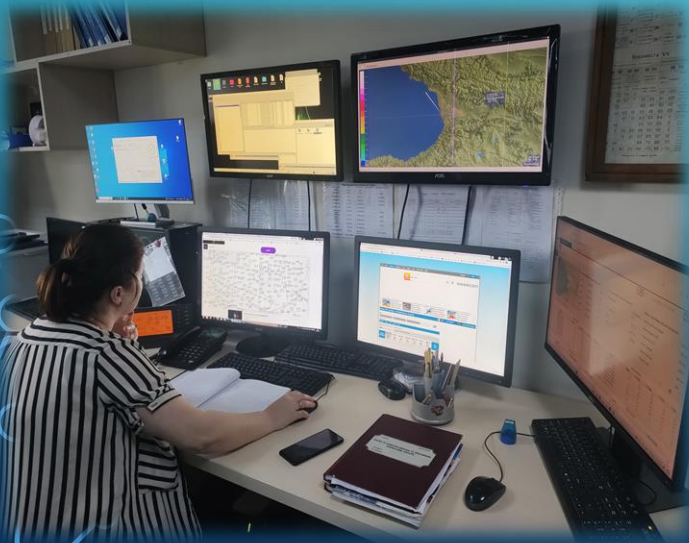
FOREIGN TRAINING

- 2020- Category “B” Hydrographic Survey one employee;
- 2022- Cartographic Data Management & Marine Spatial Data Infrastructure one employee;
- 2023- Category “B” Cartography one employee;
- 2023-OJT training in Hydrographic Survey and Cartography two employees (Supported by KHOA).
- 2024-Selected one employee in Category “B” Hydrographic Survey program (Supported by KHOA).

WEATHER FORECAST, SYNOPTIC DIVISION

Main duties:

- Weather Forecasts (Synoptic) division regularly monitors weather condition on the sea by local and other meteorological stations and forecasting weather information to the vessels and port authorities.



DIVISION OF TECHNICAL SERVICE AND MONITORING OF AIDS TO NAVIGATION

Main duties:

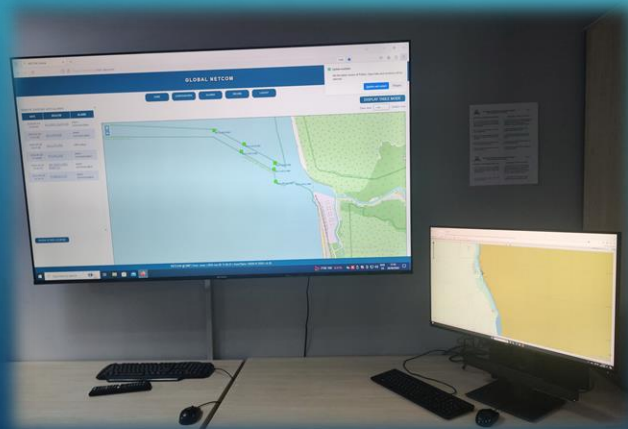
- Division of Technical Service and Monitoring of Aids to Navigation carries out the deployment of floating marks, placement of terrestrial navigational signs and maintains them in accordance with IALA Recommendations and Guidelines in order to ensure safe navigation in the area of maritime responsibility zone of Georgia.
- Floating navigational marks are equipped with GPS moduled lanterns which allow to monitor them through Web Monitoring System.



DIVISION OF RADIO-NAVIGATION (NAVTEX)

Main duties:

- Radio Navigation Division is responsible for maritime safety information on Georgian maritime responsibility zone.
- Division of Radio Navigation ensures maritime safety information on Georgian maritime responsibility zone with following systems:
 - NAVTEX station - which is transmitting navigational, meteorological and other vital messages on national 490 KHz frequency, on special allocated time slots according by IMO standards.
 - Automatic identification system (AIS)- transmitting navigational messages and GNSS corrections.
 - VHF Radio –for local vessels.



LIGHTHOUSES UNDER THE RESPONSIBILITY OF GSHS

- Observing, modernization and technical service of Lighthouses.



INTERNATIONAL RELATIONS

- From 2012 State Hydrographic Service of Georgia is a full member of PRIMAR.
- From 2015 State Hydrographic Service of Georgia is a full member of IHO.
- From 2016 State Hydrographic Service of Georgia is a National Member of IALA.



ACTIVITIES

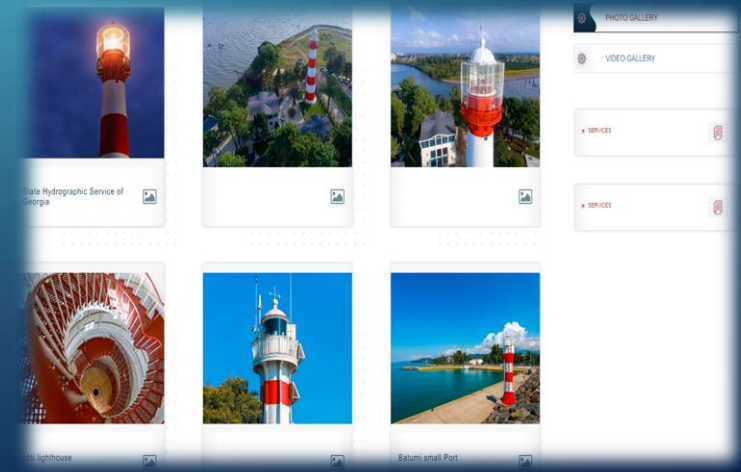
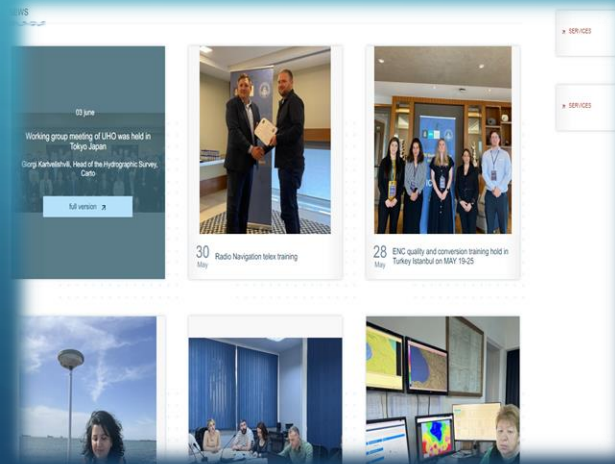
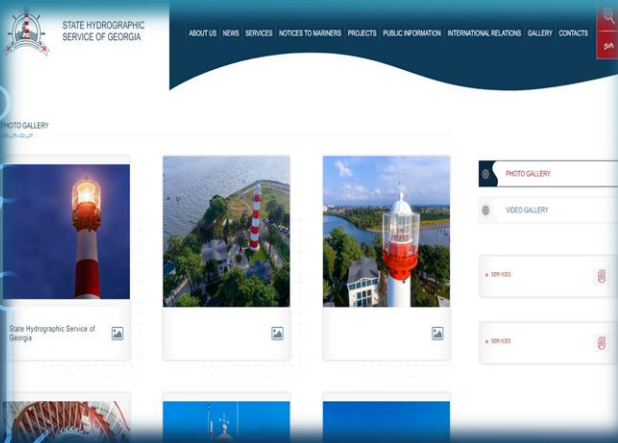
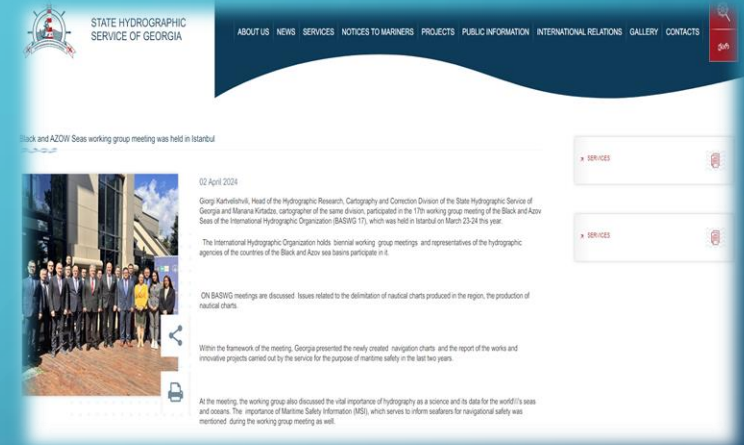
GSHS has participated in the following IHO and IALA events:

- IHO Assembly
- BASWG Meetings
- MBSHC Meetings
- HSSC Meeting
- IALA Diplomatic Conference.



PUBLIC RELATIONS

- www.hydrography.ge / website
- Georgian State Hydrographic Service / Facebook.com
- @hydrographyGeo / Tweeter.com
- Hydro Graphy / Google.com
- Hydrography Georgia / YouTube



QUALITY MANAGEMENT SYSTEM

- State Hydrographic Service of Georgia successfully passed the external audit and is certified with ISO 9001-2008 Certificate.



FUTURE PROJECTS OF GSHS

- Training Courses (Supported by KHOA).
- Planning for release new ENC charts of Port of Batumi GE610105 and Port of Poti GE610305 Band 6 (Supported by KHOA).
- Update paper chart GE100 and create corresponding ENC.

FUTURE PROJECTS OF GSHS



The State Hydrographic Service will soon receive a new hydrographic vessel (ABKHAZETI, 34m) for the oceanographic and hydrographic activities and maintenance of floating navigation marks at sea.

THANK YOU FOR ATTENTION!!!

