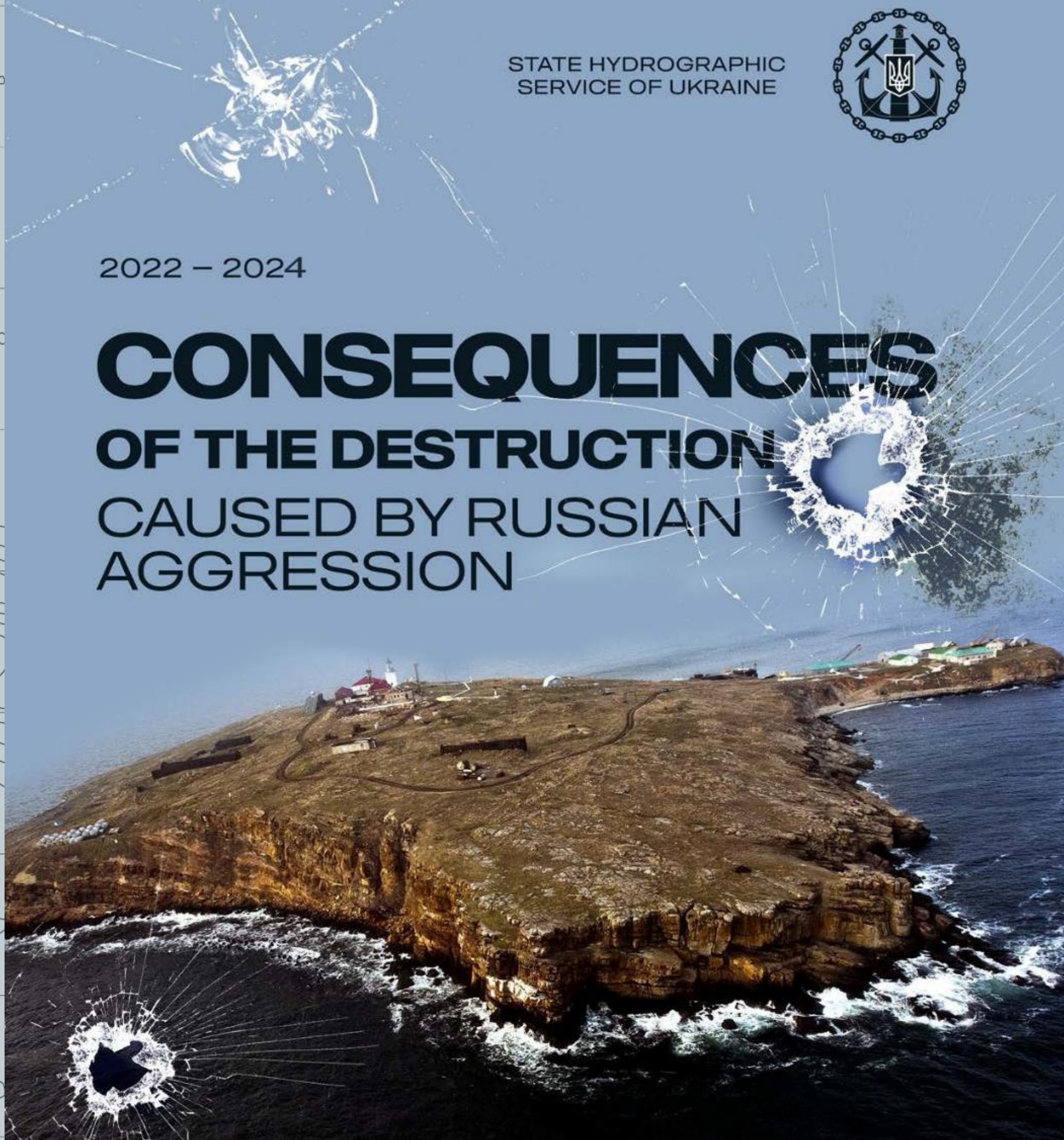


STATE HYDROGRAPHIC  
SERVICE OF UKRAINE



2022 – 2024

# CONSEQUENCES OF THE DESTRUCTION CAUSED BY RUSSIAN AGGRESSION





SHYROKYNE

MARIUPOL

MYKOLAIV

OCHAKIV

ODESA

ZATOKA

KHERSON

SEA OF AZOV

ZMIINYI ISLAND (SNAKE ISLAND)

BLACK SEA

# MAP OF DESTRUCTION

- 1 Shyrokyne Lighthouse
- 2 Zmiinyi Island (Snake Island)
- 3 Kherson Section
- 4 Berezansko-Ochakivske Elbow Rear Lighthouse
- 5 Mariupolskyi Middle Lighthouse
- 6 Ruskyi Lighthouse
- 7 Khablivskyi Rear Lighthouse
- 8 Khablivskyi Middle Lighthouse
- 9 Siversiv Rear Lighthouse
- 10 Dnipro-Lymanskyi Rear Mark
- 11 Stanislav-Adzhyholskyi Rear Lighthouse
- 12 Dnistrovsko-Tsarehradskyi Lighthouse
- 13 Kysliakivskyi Rear Lighthouse
- 14 Vorontsovskyi Lighthouse
- 15 Tendrivskyi Lighthouse

After  
24 February 2022



Before the russian  
aggression on  
24 February 2022

# ZMIINYI ISLAND (Snake Island)

# KYSLIAKIVSKYI REAR

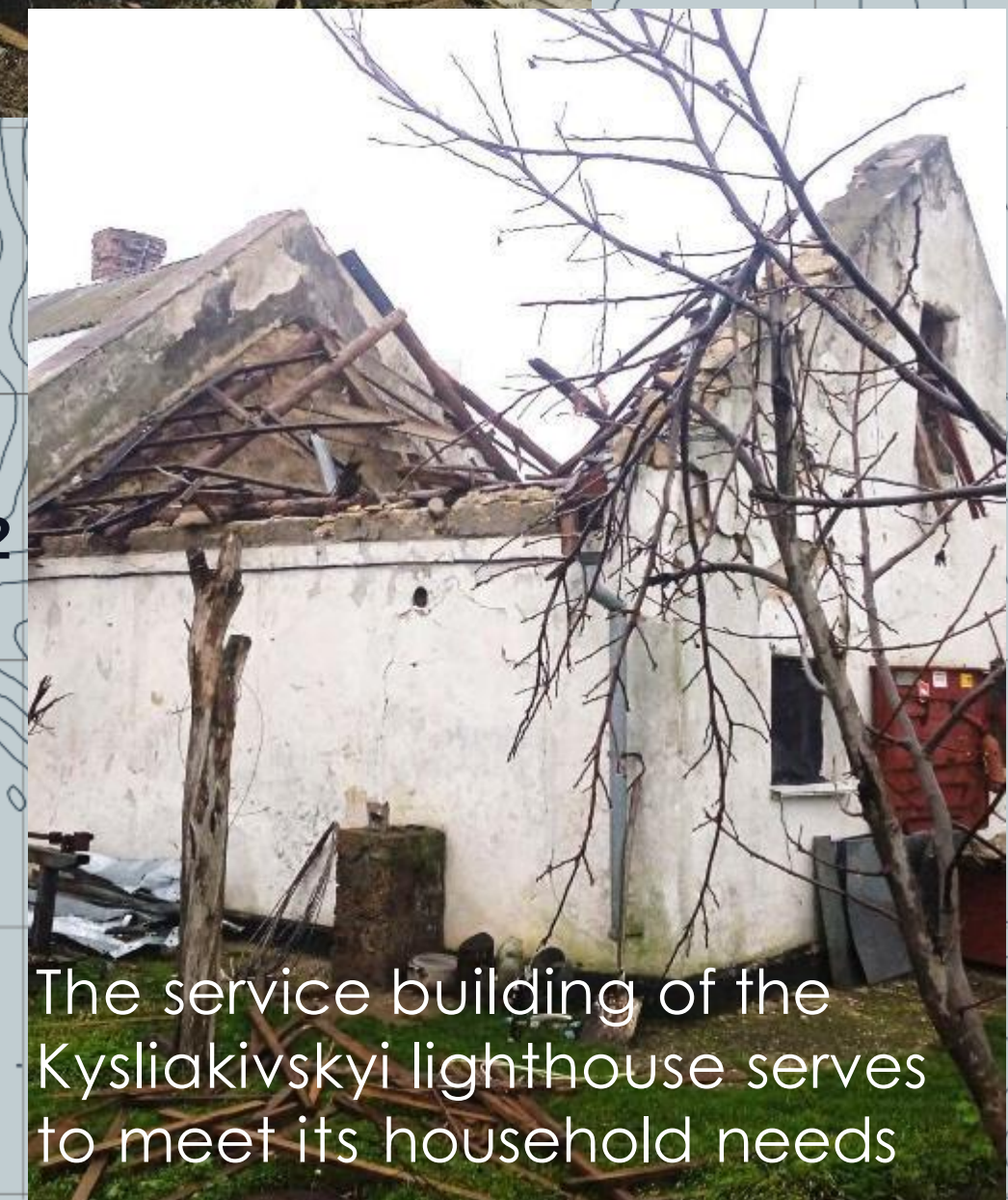
## Lighthouse

Serves to ensure shipping safety on the seventh elbow of the Buzko-Dniprovsko-Lymanskyi channel

Before the russian aggression on 24 February 2022



After  
24 February 2022



The service building of the Kysliakivskyi lighthouse serves to meet its household needs



After

24 February 2022

# DNIPRO-LYMANSKYI REAR MARK

Serves to ensure shipping safety on  
the third elbow of the Buzko-  
Dniprovsko-Lymanskyi channel



Before the russian aggression on  
24 February 2022



# HEATING FACILITY OF THE DNIPRO-LYMANSKYI REAR MARK

Provides autonomous operation  
of the lighthouse facility



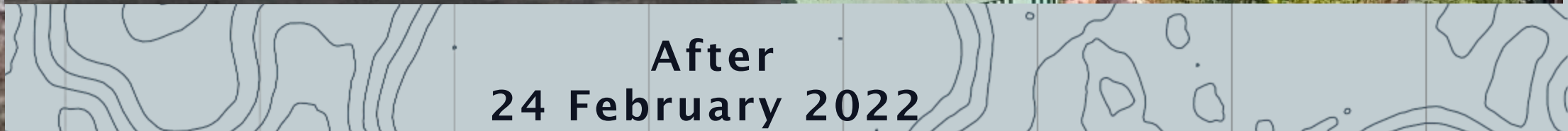
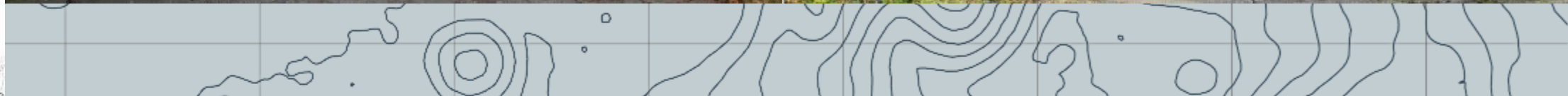
Before the russian  
aggression on  
24 February 2022

After  
24 February 2022



# MARIUPOLSKYI MIDDLE LIGHTHOUSE

Before  
24 February  
2022



After  
24 February 2022

# HEATING FACILITY OF THE KHABLIVSKYI REAR LIGHTHOUSE

Before  
24 February 2022



After  
24 February 2022



Serves for the household needs of the lighthouse staff, as well as for the backup diesel generators exploitation.

# RESIDENTIAL HOUSE OF THE KHABLIVSKYI REAR LIGHTHOUSE

Serves as a residence for the lighthouse staff





# TOWER OF THE KHABLIVSKYI MIDDLE LIGHTHOUSE

Serves to ensure shipping safety on  
the sixth elbow of the  
Buzko-Dniprovsko-Lymanskyi channel



Before the russian  
aggression on  
24 February 2022

# UTILITY ROOM AND GARAGE OF THE KHABLIVSKIY MIDDLE LIGHTHOUSE

Serve to meet the household  
needs of the lighthouse staff

# RESIDENTIAL HOUSE OF THE KHABLIVSKYI MIDDLE LIGHTHOUSE

Serves as a residence for the  
lighthouse staff



After  
24 February  
2022



# **BEREZANSKO- OCHAKIVSKE ELBOW REAR LIGHTHOUSE**

Serves to ensure shipping  
safety on the second elbow Buzko-  
Dniprovsko-Lymanskyi channel



After  
24 February  
2022





# The Kherson Section – the Mykolaiv Branch of the SHSU





**The Kherson Section – the Mykolaiv Branch of the SHSU**

# The Kherson Section – the Mykolaiv Branch of the SHSU



# Tendrivskyi Lighthouse – the Mykolaiv Branch of the SHSU

Before the russian aggression on 24 February 2022



After 24 February 2022



# Vorontsovskiy Lighthouse – the Odesa Branch of the SHSU

Before the Russian aggression on 24 February 2022



After 24 February 2022



# STRYZHEN VESSEL

On 23rd August 2022, the Stryzhen motor vessel sank after a direct drone hit



Before the Russian aggression on 24 February 2022



After 24 February 2022



A Mitsubishi L200 car. Lost



# HYDROGRAF-5 SURVEY BOAT

Before the Russian aggression on  
24 February 2022



Two YAMAHA-115 engines with attachment platforms **were missing after de-occupation** on the Hydrograf-5 survey boat. Its cable connections were damaged as well.

The underbody has penetrating damage, broken portholes of the vessel superstructure, and damaged electrical cables.

After  
24 February 2022



# HYDROGRAF-12 CRAFT

The water propeller has been missed.  
The screw shaft has been damaged.

The cable connections have partially been damaged.

Batteries, spare parts and tools have been missed.

**After  
24 February  
2022**



Before the Russian aggression on 24 February 2022



After 24 February 2022



## KAPITAN BASHEV VESSEL

The Kapitan Bashev is a small hydrographic vessel which carries out Aids-to-Navigation (AtoN) maintenance. The preliminary damage check of the vessel, which had been located within the temporarily occupied territory, was carried out **after the de-occupation** of the Kherson Section.

The engine room, steering room and hold have been filled with water. After dewatering, shut-off valves, ballast system piping, engine cooling system, and fuel system were found to be missing.

Cable connections were partially cut. Cabin furniture has been damaged and destroyed.

Batteries, spare parts, tools, household appliances and galley equipment were missed. Fuel tanks were filled with water.

Emergency equipment was missed. Hydraulic system of the hoist was damaged.



# LORAN CRAFT

MerCruiser-3.0L engine has been missed, portholes of the deck superstructure have been broken and electrical cables damaged **after de-occupation.**

After  
24 February  
2022



Before the russian aggression on 24 February 2022

# SHLIAKHOVYK VESSEL



A topographic map background with a grid. The map shows contour lines representing elevation, with a prominent mountain range on the right side. The text "Thank you for your attention!" is centered in a bold, black font.

**Thank you for your attention!**