

Direction des missions institutionnelles
et des relations internationales
Division relations extérieures

BREST, le 30 mai 2023

N° 021 /Shom/DMI/REX/NP

Rear Admiral Laurent Kerléguer,
Shom's Director General

to

Commander Nektarios Roditis,
Region F International Charting Coordinator

- SUBJET** : information from France on the gradual withdrawal of the French INT charts in Lebanese waters.
- REFERENCES** : a) region F ICCWG Circular Letter No 03/2022;
b) lebanese National Nautical Charting Plan;
c) transition plan between Shom and LNHS, signed on 19 April 2023.
- ANNEX** : current coverage of the French INT charts in Lebanese waters.

Commander,

At the MBSHC22 Conference in 2021, the LNHS presented the Lebanese National Nautical Charting Plan, which includes the coverage of Lebanese waters with Lebanese paper charts, some of which proposed to be integrated into the INT scheme.

At present, France publishes a series of INT charts in Lebanese waters. The details of this coverage are presented in the Annex.

The publication process of the Lebanese products is underway with the coordination at the MBSHC level which started with the circular letter in reference a) and leads to the upcoming publication of the first 3 ENCs of the LNHS.

The transition plan signed in April 2023 between Shom and the LNHS covers the coordination of the publication of Lebanese products and the withdrawal of French equivalent products.

In particular, France wishes to inform the Region F ICCWG of its intention to withdraw its INT charts within 2 months of the release of the corresponding Lebanese ENC's. For the sake of consistency in the management of the responsibility, Lebanon endeavours to publish all nautical documents in one given area, in principal within this delay.

France does not intend to make a case-by-case request to the ICCWG for the withdrawal of its INT charts. In order to allow the Region F International Charting Coordinator to nominally update the INT scheme via INTToGIS, Shom will notify the latter by email as soon as an INT chart has been withdrawn.

For its side, Lebanon will issue requests to the Region F ICCWG for the introduction to the INT scheme of its nautical charts, asking for INT numbers and specifying the French INT charts they will replace.

Best regards,

On behalf of RADM Laurent Kerléguer,
Shom's Director General
CAPT Pierre-Yves Dupuy,
Head of the public services and
international relations directorate.

**Pierre-Yves
DUPUY**

Signature numérique de
Pierre-Yves DUPUY
Date : 2023.05.30
09:58:18 +02'00'

ANNEXE AU COURRIER N° 021 /SHOM/DMI/REX/NP DU 30 MAI 2023
CURRENT COVERAGE OF THE FRENCH INT CHARTS IN LEBANESE WATERS

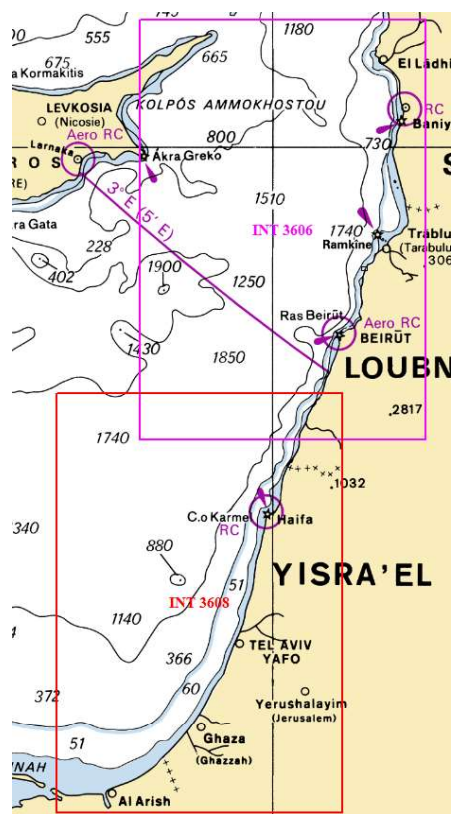
France currently publishes 4 INT charts in the Lebanese waters, in compliance with the IHO procedures and under the coordination of the Region F ICCWG.

List of the French INT charts published in the Lebanese waters :

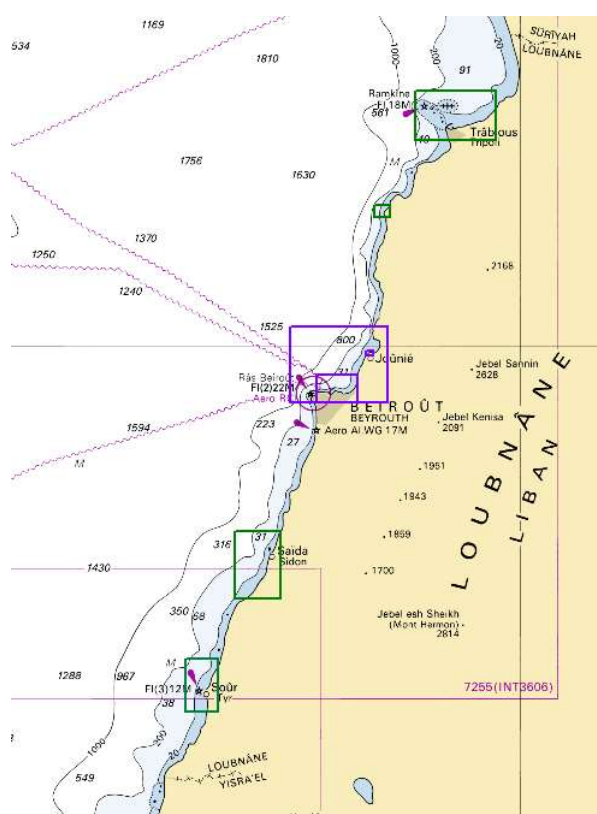
Nat. Number	INT Number	Scale(s)	Title
FR 7255 *	INT 3606	1 : 250 000	De El Lādhiqiyeh à Soûr
FR 7256 *	INT 3608	1 : 250 000	De Soûr à Al 'Arîsh
FR 7348	INT 3670	1 : 30 000 1 : 12 500 1 : 10 000	Approches de Beyrouth (Beiroût) <i>Plan A : Abords et Port de Beyrouth (Beiroût)</i> <i>Plan B : Port de Joûnié</i>
FR 7514	INT 3671	1 : 25 000 1 : 20 000 1 : 25 000 1 : 25 000	Ports du Liban <i>Plan A : Abords de Tarabulus (Tripoli)</i> <i>Plan B : Abords de Selaata</i> <i>Plan C : Abords de Sayda (Saïda)</i> <i>Plan D : Abords de Sur (Tyr)</i>

* These charts are only partially on Lebanese waters and their coverage extends to the waters of bordering countries.

Coverage of the French INT charts published in the Lebanese waters :



In red : INT 3608 / In pink : INT 3606



In green : INT3671 / In violet : INT 3670

LISTE DE DIFFUSION

DESTINATAIRE :

- REGION F ICCCW CHAIR (GREECE – HNHS – CDR NEKTARIOS RODITIS)

COPIES EXTÉRIEURES :

- LNHS
- MBSHC CHAIR (CROATIA – HHI)
- IHO SECRETARIAT

COPIES INTÉRIEURES :

- DG
- DMI (D – REX)
- DOPS (D – PSM – CA – NA)
- DSD
- ARCHIVES (N° DMIDSD 2.018)