

Lebanese INT charts proposal - Beirut

Author: LNHS Head of Cartographic Department

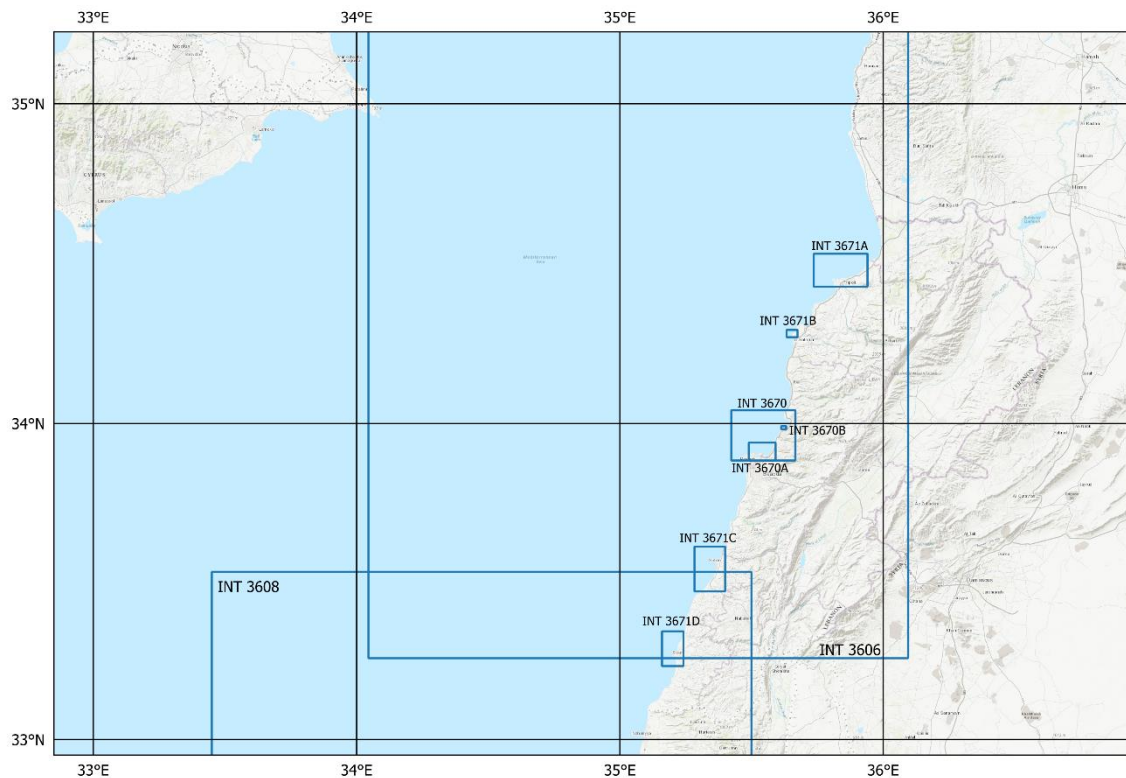
Date: 20230523

Background

Lebanon started producing ENC's and PC's with the intention to provide PC Coverage of Lebanese waters of the Mediterranean. The current INT coverage is provided through 4 INT charts, containing 6 plans, in usage coastal, Approaches and harbor produced by the French Hydrographic Office (SHOM).

The Lebanese National Nautical Charting Plan proposes 10 New PC's covering usage from coastal to harbor, of which 4 are planned to be holding INT numbers.

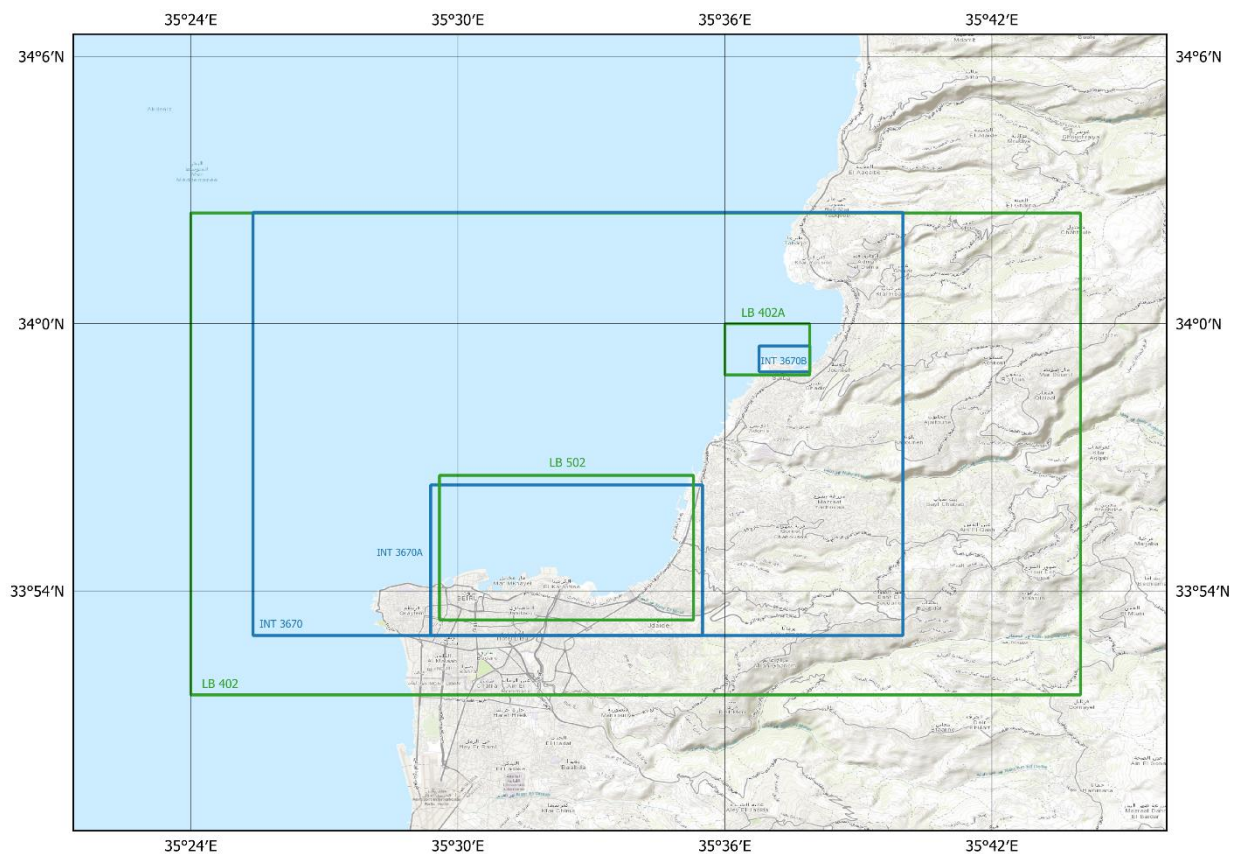
Figure 1: Current INT Coverage in Usage Band coastal to harbor



Proposed INT Coverage Changes – Phase 1

Lebanon has produced 2 PCs that are intended to hold an INT, these are listed below, and the LNHS propose the following changes to the INT coverage to enable the distribution of these PCs while SHOM will withdraw its own INT charts that cover the same area.

Lebanese PCs	Lebanese Scale	French INT	French Scale	Proposal
402	1:45000	INT 3670	1:30000	approval of 2 LB PCs as INT to replace the INT 3670 being withdrawn by SHOM
402A (plan)	1:12000		1:10000	
502	1:8000		1:12500	



Future Planned Coverage

The following three PCs are planned to be produced as a second batch of Lebanese PCs, the current target is to complete these charts by beginning 2024.

Lebanese ENC	Lebanese Scale	Chart Title	Notes
LB 401	-	Approach to Tripoli and Selaata	Planned INT to replace INT 3671A and INT 3671B
LB 401A	1:40000	Approach to Tripoli	Planned INT to replace INT 3671A
LB 401B	1:20000	Approach to Selaata	Planned INT to replace INT 3671B
LB 501	1:8000	Port of Tripoli	

The remaining 6 PCs are planned for future productions.

Lebanese ENC	Lebanese Scale	Chart Title
LB300301	1:100000	Tripoli to Ras es Saadiyat
LB300302	1:100000	Ras El Maameltein to Ras Al Naqourah
LB300303	1:250000	Baniyas to Akka
LB400403	1:25000	Approach to Sidon
LB400404	1:25000	Approach to Tyre
LB500503	1:6000	Port of Sidon

Next Steps

- Lebanon will share this proposal with the following parties for comment as detailed in S-11 Part A.
 - All members of the ICCWG and, where appropriate, members of the RHC.
 - Hydrographic offices producing PCs in the region. (France) □ (UK) □ the IHO Secretariat.
- Following the resolution of any comments raised, the intent is for the Regional Coordinator to submit to the RHC for approval. However, we request this to be done via correspondence or by the RHC chair assuming that any comments have been resolved, this is taking into consideration that SHOM will withdraw their equivalent INT charts covering this area.