

Coverage Change Proposal to Lebanese ENCs

Author: IC- ENC Data Manager

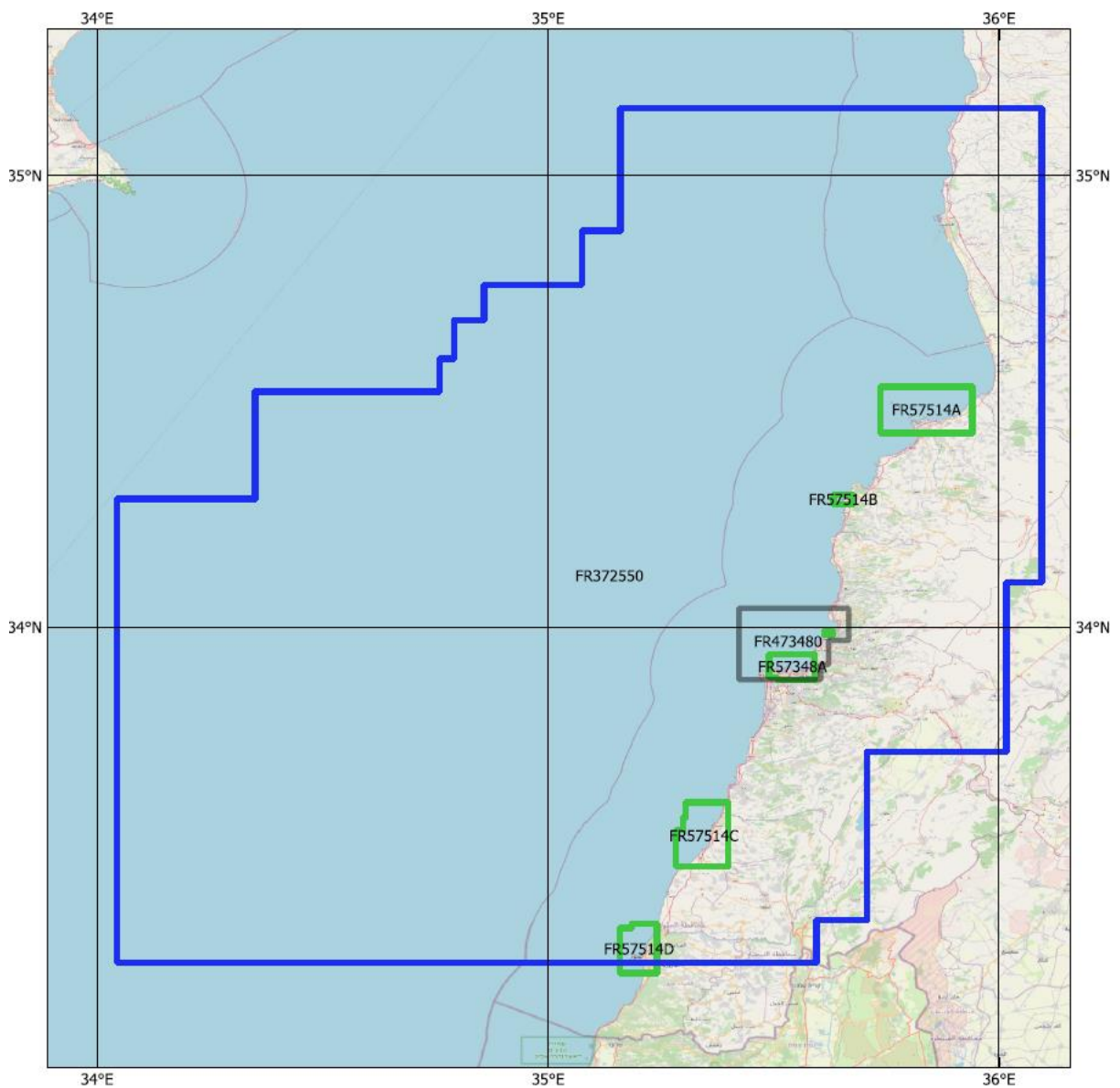
Date: 202200614

Background

Lebanon became a member of IC-ENC in May 2022 with the intention to provide ENC Coverage of Lebanese waters of the Mediterranean. The current ENC coverage is provided through 8 ENC in usage bands 3, 4 and 5 produced by the French Hydrographic Office (SHOM), additionally band 1 coverage is provided through an Italian and Turkish ENC.

The Lebanese National Nautical Charting Plan proposes 12 New ENC's covering usage bands 3 to 5.

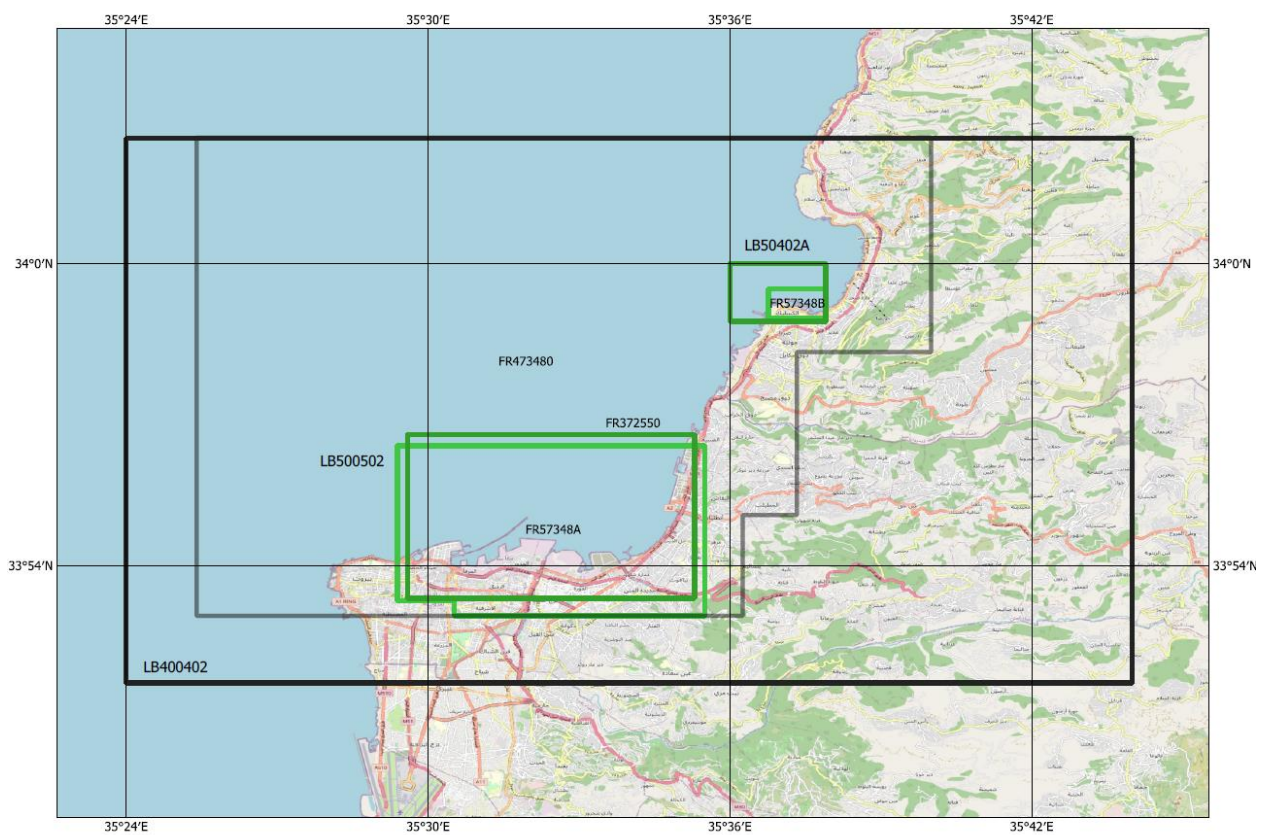
Figure 1: Current ENC Coverage in Usage Band 3 – 5.



Proposed ENC Coverage Changes – Phase 1

IC-ENC has received 3 ENC from Lebanon, these are listed below, IC-ENC propose the following changes to the ENC coverage to enable the distribution of these ENCs while avoiding introducing overlapping data coverage in line with WEND principles.

| Lebanese ENC | Lebanese Scale | French ENC | French Scale | Proposal |
|--------------|----------------|------------|--------------|---|
| LB400402 | 1:45000 | FR473480 | 1:22000 | FR473480 cancelled on release of LB400402 |
| LB50402A | 1:12000 | FR57348B | 1:8000 | FR57348B cancelled on release of LB50402A |
| LB500502 | 1:8000 | FR57348A | 1:12000 | FR57348A cancelled on release of LB500502 |



Future Planned Coverage

The following three ENC's are planned to be produced as a second batch of Lebanese ENC's, the current target is to complete these cells for the end of 2022.

| Lebanese ENC | Lebanese Scale | Chart Title |
|--------------|----------------|---------------------|
| LB40401A | 1:45000 | Approach to Tripoli |
| LB40401B | 1:22000 | Approach to Selaata |
| LB500501 | 1:8000 | Port of Tripoli |

The remaining 6 ENC's are planned for future productions.

| Lebanese ENC | Lebanese Scale | Chart Title |
|--------------|----------------|--------------------------------------|
| LB300301 | 1:90000 | Tripoli to Ras es Saadiyat |
| LB300302 | 1:90000 | Ras El Maameltein to Ras Al Naqourah |
| LB300303 | 1:180000 | Baniyas to Akka |
| LB400403 | 1:22000 | Approach to Sidon |
| LB400404 | 1:22000 | Approach to Tyre |
| LB500503 | 1:4000 | Port of Sidon |

Next Steps

1. Lebanon will share this proposal with the following parties for comment as detailed in S-11 Part A.
 - All members of the ICCWG and, where appropriate, members of the RHC.
 - Hydrographic offices producing ENC's in the region. (France)
 - RENCs. (Primar)
 - The IHO Secretariat.
2. Following the resolution of any comments raised the intent is for the Regional Coordinator to submit to the RHC for approval. However, we expect this to be done via correspondence or by the RHC chair assuming that any comments have been resolved.
3. Once this is complete and the cells are ready for release IC-ENC will contact SHOM and Primar to agree a plan and timeframe for the release of the LB cells and cancellation of FR coverage.