

## National Report of Iceland

### Executive summary

This report gives an overview of the work of the Hydrographic and Maritime Safety Department (HMSD) of the Icelandic Coast Guard (ICG) for the period from NHC65 in April 2022 to NHC66 in March 2023.

### 1. Hydrographic Office / Service

The Icelandic Coast Guard (ICG) is responsible for hydrographic surveying and nautical charting in the waters around Iceland. The Hydrographic and Maritime Safety Department (HMSD) carries out these tasks. Current number of staff at the HMSD is eight people. Unfortunately, two employees have been on sick leave for extended periods. This has had considerable effect on the capacity of the HMSD.

### 2. Surveys

Surveying continued in the summer of 2022 in Ísafjarðardjúp and north of the Westfjords. The survey season lasted as usual from May to September. A total of 68 days of surveying on the survey vessel BALDUR.

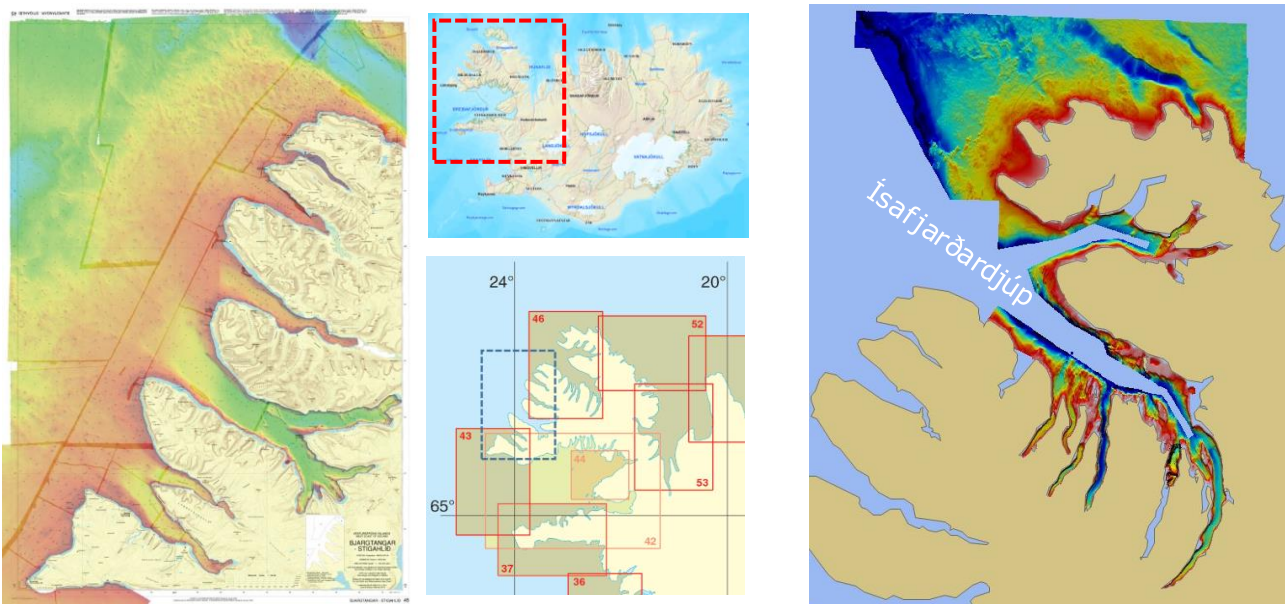


Fig. 1. A new chart, IS45 Bjargtangar – Stigahlíð fills a gap in the 1:100.000 Coastal chart series on the NW coast. Publication is planned Q2, 2023. To the right, surveyed areas in Ísafjarðardjúp in 2020-2022.

In addition to scheduled survey activities, contract work was carried out for the Port Authorities in Reykjavík in relation to works in progress, dredging and key extensions.

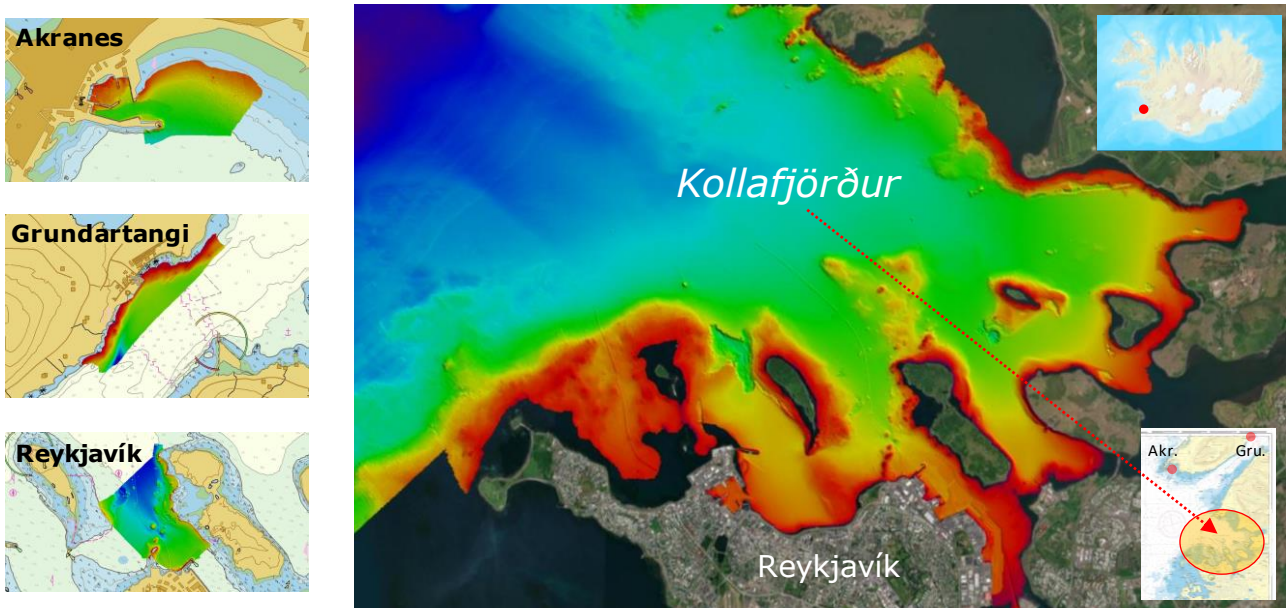


Fig. 2. Reykjavík is on the south side of Kollafjörður. Multibeam surveys cover all the fjord.

### 3. New charts & updates

#### ENCs

International Centre for ENCs (IC-ENC) distributes Icelandic ENCs. In 2022 26 new editions have been made and 3 updates. Iceland produces and maintains 73 ENC cells.

#### National paper charts

Twelve new editions have been published since last report in April 2022. Three Coastal charts and nine harbour plans. The following tables list this.

Coastal charts			
No.	Title	Scale	New ed.
42	Breiðafjörður	1:160 000	6/2022
33	Selvogur-Vestm.eyjar	1:100 000	12/2022
35	Fuglasker	1:100 000	12/2022

Harbour plans			
No.	Title	Scale	New ed.
523	Ólafsfjörður	1:10 000	5/2022
524	Dalvík	1:10 000	5/2022
611	Þórshöfn	1:10 000	5/2022
421	Rif	1:10 000	6/2022
522	Siglufjörður	1:10 000	7/2022
310	Vestmannaeyjar	1:10 000	1/2023
415	Suðureyri	1:10 000	2/2023
418	Súðavík	1:10 000	2/2023
712	Seyðisfjörður	1:10 000	2/2023

A New Edition of IS42 Breiðafjörður was published in June 2022. Updating the chart was a challenge. The chart was first published in 1946 by the Royal Danish Hydrographic Office. The new edition reflects status of the chart in relation to more recent larger scale IS charts. Parts of IS42 have been cancelled.

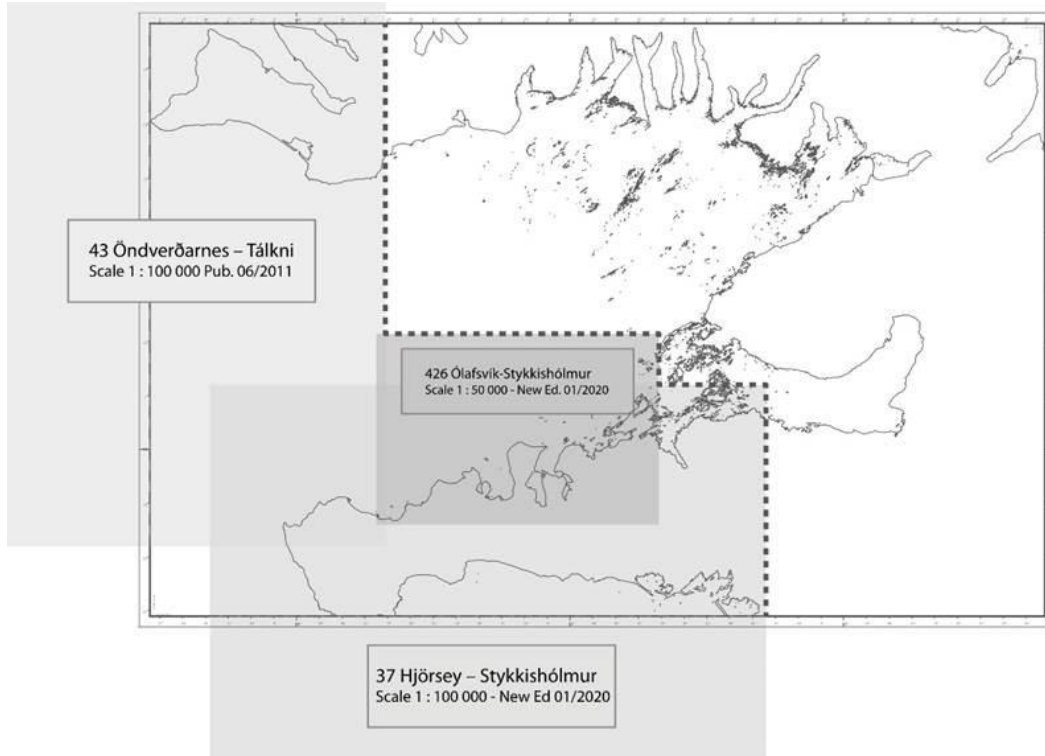


Fig. 4. Cancelled parts of IS42 with reference to newer larger scale chart which mariners are instructed to use.

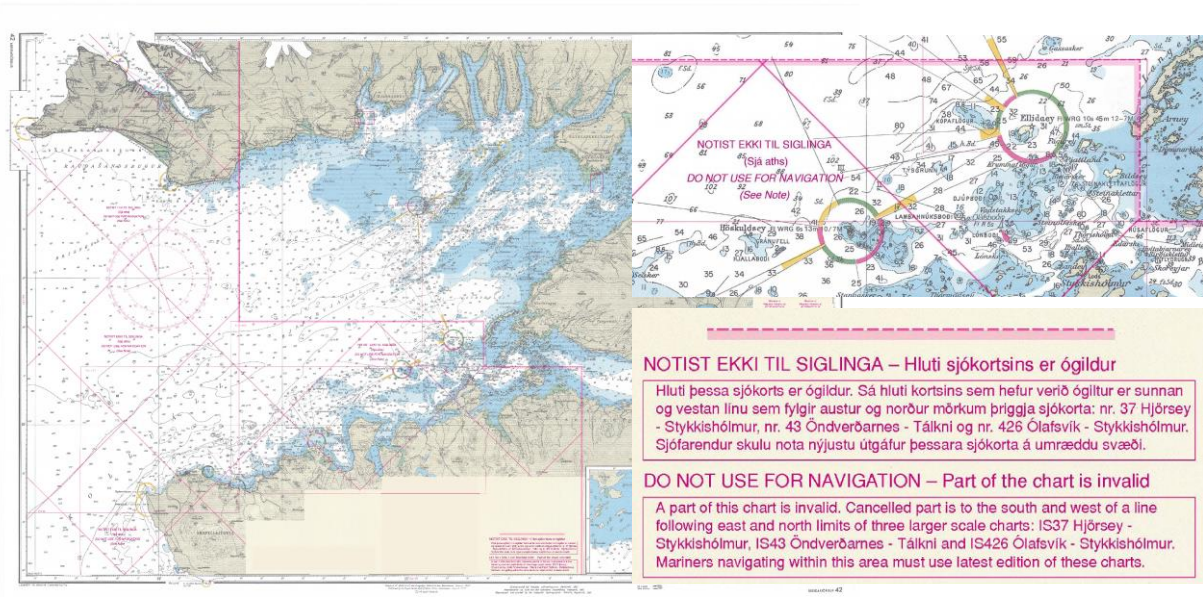


Fig. 5. The new edition of IS42 and the Note instructing mariners to use the three larger scale charts.

### Planned new harbour plans

Ten new harbour plans (size A3) are planned in 2023. Once published these harbour plans will mark a milestone in publication of Icelandic harbour plans. Harbour plans size A3 will be available for all medium size ports in Iceland and almost all small size ports. The following table lists these harbour plans, and they are shown on the map below.

IS No.	Title	Scale	Planned
322	Arnarstapi	1:10.000	Q2-3 2023
517	Blönduós	1:10.000	Q2-3 2023
513	Drangsnæs	1:10.000	Q2-3 2023
525	Hrísey	1:10.000	Q2-3 2023
526	Árskógssandur	1:10.000	Q2-3 2023
527	Hauganes	1:10.000	Q2-3 2023
531	Grenivík	1:10.000	Q2-3 2023
536	Kópasker	1:10.000	Q2-3 2023
612	Bakkafjörður	1:10.000	Q2-3 2023
710	Borgarfjörður eystri	1:10.000	Q2-3 2023

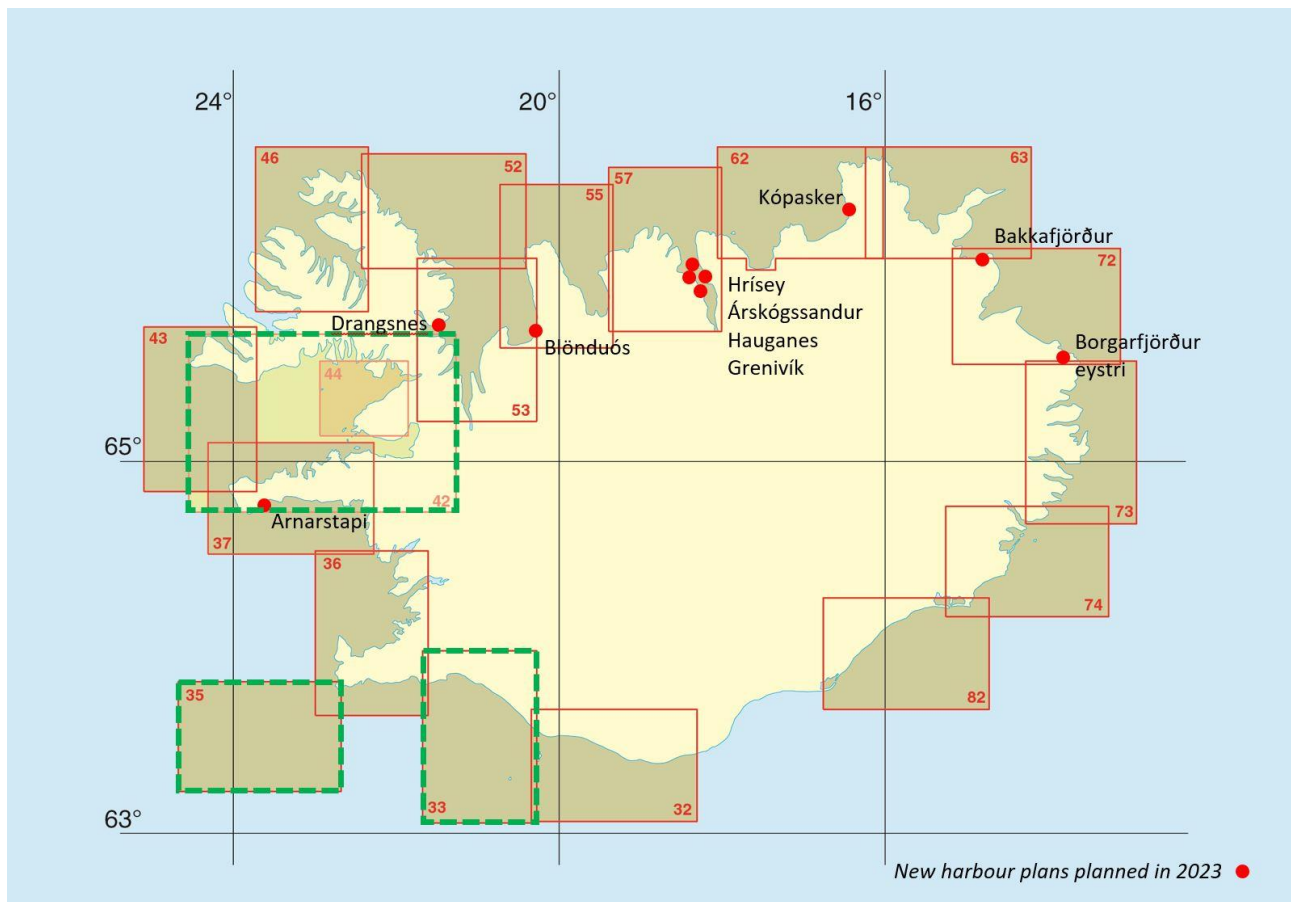


Fig. 3. New editions of three of the Coastal charts were published 2022.  
New editions of the remaining Coastal charts are planned in 2023.

#### 4. New publications & updates

The annual publications, *Tide Tables 2023*, and *Tide Almanac 2023* were printed in October 2022. The pdf-publication, *List of Lights* and *Catalogue of charts* have been updated. Both are available for download at [www.lhg.is](http://www.lhg.is). The *List of Lights* is published on behalf of the Road and Coastal Administration.

Twelve issues of *Notices to Mariners* were published in 2022, 71 NMs in total. Two issues of NMs have been published so far in 2023, total of 19 NMs. The pdf-publications are available for download at [www.lhg.is](http://www.lhg.is).

*List of Lights*: [https://www.lhg.is/media/sjomaelingar\\_islands/Vitaskra\\_vefutg\\_28.03.2022.pdf](https://www.lhg.is/media/sjomaelingar_islands/Vitaskra_vefutg_28.03.2022.pdf)

*Catalogue of charts*: [https://www.lhg.is/media/sjokort/Kortaskra\\_IS\\_Catalogue\\_of\\_Charts\\_15.06.2022.pdf](https://www.lhg.is/media/sjokort/Kortaskra_IS_Catalogue_of_Charts_15.06.2022.pdf)

*Icelandic NMs*: <https://www.lhg.is/starfsemi/sjomaelingasvid/tts/nvjustu-tts/>

*Cumulative list of NMs for Icelandic Charts*: <https://www.lhg.is/starfsemi/sjomaelingasvid/tts/uppsafnadar-tilkynningar/>

#### 5. MSI

The Icelandic Coast Guard runs VTS. MSI service is an integrated part of that operation. The ICG VTS services Iceland and Greenland. NAVTEX messages in 2022 were in total 11.743 (12.038 in 2021) for Iceland and 4.525 (5.656 in 2021) for Greenland. The figures include storm and ice warnings.

#### 6. C-55

Last update was made in November 2016. Update is planned in 2023. The screen captures below show multibeam survey coverage (left) and combined multibeam and single beam coverage (right).

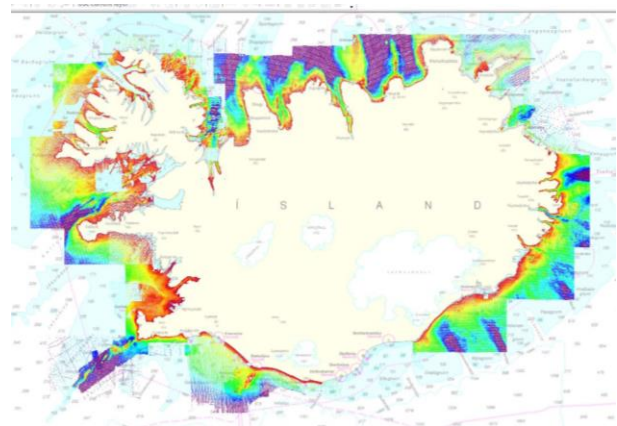


Fig. 6. Coverage of ICG multibeam surveys (left) and combined multibeam and single beam coverage (right).

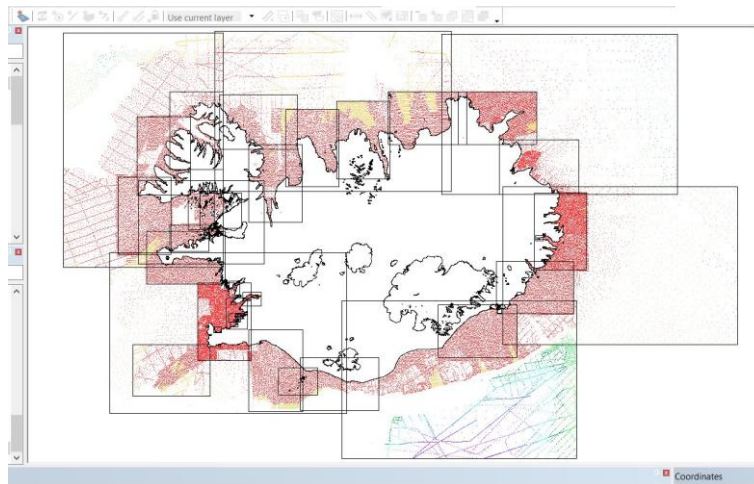
#### 7. Capacity Building

ICG-HMSD participated in work towards the planning act on Marine Spatial Planning (MSP) for coastal areas in NW- and E- Iceland, supplying data and expertise to the Icelandic National Planning Agency.

ICG-HMSD cooperated with the Icelandic Transport Authority and the Icelandic Road and Coastal Administration on a ministerial report on safety of navigation regarding regional use of marine space.

## EMODnet Bathymetry

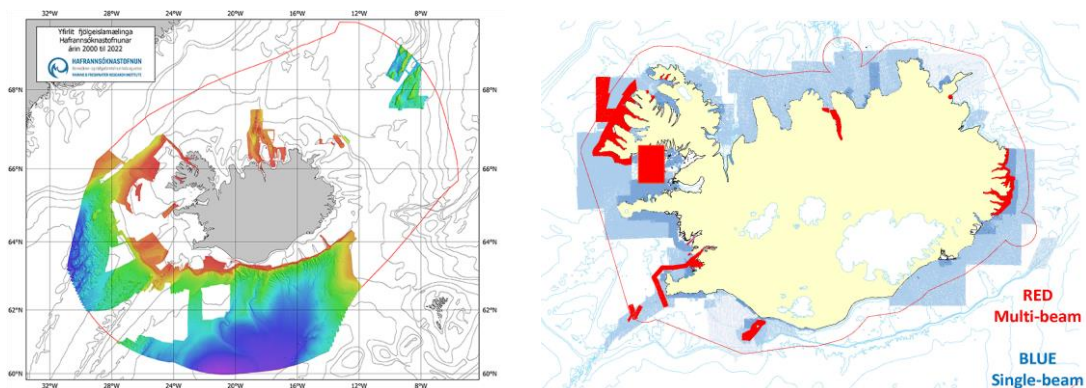
Iceland has delivered a sounding dataset to EMODnet Bathymetry to be included in next EMODnet bathymetry release. The dataset is a collection of xyz export files from Icelandic charts in June 2019. The files hold all depth data used to compile the charts (processed data). Future updates will come from the CARIS Bathy DataBASE once it is launched.



*Fig. 7. Sounding dataset (xyz) delivered to EMODnet Bathymetry in July 2022 as a collection of sounding data export files from Icelandic charts.*

## 8. Oceanographic activities

The focus of ICG-HMSD survey work lies approx. within the circular extent of the 200 m depth contour, which is somewhat larger than the area of the Territorial Waters. Red line on the image on the right below shows the TW (12 NM) and the extent of ICG-HMSD modern hydrographic surveys in red and blue. The project of surveying the EEZ of Iceland from approx. 200 m depth contour continues. The *Marine & Freshwater Research Institute* (MFRI) leads the project and ICG takes part in it.



*Fig.8. Status of surveying the EEZ of Iceland in 2022. The image on left shows data from MFRI. Image on right shows coastal surveying by the ICG.*

The MFRI data is available for download at <https://www.hafogvatn.is/en/research/seabed-mapping>

## 9. Spatial data infrastructures

The ICG-HMSD has good relations with the National Land Survey Iceland (NLSI) which is responsible for SDI in Iceland since 2011 when the Icelandic Parliament passed the Digital Spatial Data Infrastructure Act.

Marine Spatial Planning and MSP and SDI/MSDI awareness is gradually growing at government and municipality level. A web portal “Hafsjá” was launched by NLSI in October 2021. Themes shown include fisheries management and fish stocks monitoring, aquaculture and fish farming, maritime limits & boundaries.

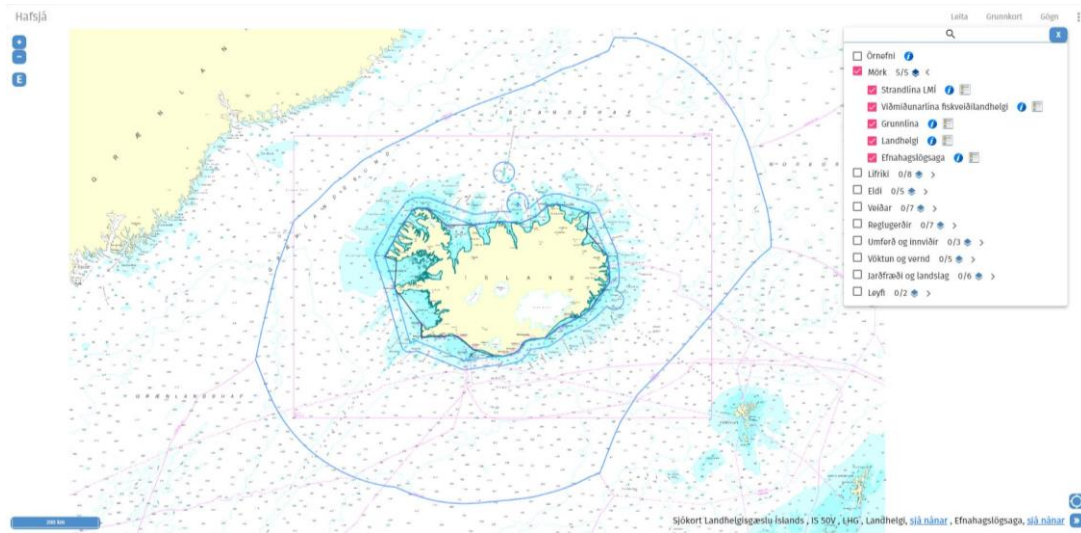


Fig. 9. The Icelandic Ocean Portal “Hafsjá” <https://atlas.lmi.is/mapview/?application=haf>

## 10. Innovation

### Print on Demand (PoD)

Fully functional PoD for Icelandic charts was launched in March 2022. By spring 2022 five international agents had active POD services for Icelandic charts.

### CARIS BDB

Work on incorporating *CARIS Bathy DataBASE (BDB)* into the Data management and Chart Production Processes of the ICG-HMSD will continue and extend well into 2023. There is still a lot of work to be done to finalize BDB implementation.

## 11. Other activities.

### IHO RHCs, WGs and other work

Representatives of ICG-HMSD participated in the following meetings or workshops held by IHO bodies:

- NHC65 in Stavanger, Norway, in April 2022
- ARHC12 in St John's, Canada, in September 2022
- NSHC-TWG24 VTC in September 2022
- NHC-NSEG Workshop in January 2022
- NHC-NCPEG Workshop in January 2022
- NS-BSMSDIWG VTC in January 2023

---

Representatives of ICG-HMSD participated in IC-ENC Technical Committee meetings in 2022/23 and the IC-ENC Steering Committee meeting in July 2022 (SC23).

The Faroe Islands HO i.e., the Faroese Environment Agency, Land and navigation charts, ([www.us.fo](http://www.us.fo)) visited the Icelandic HO in September 2022.

## **12. Conclusions:**

This report highlights activities of the ICG-HMSD for the period from April 2022 to March 2023.