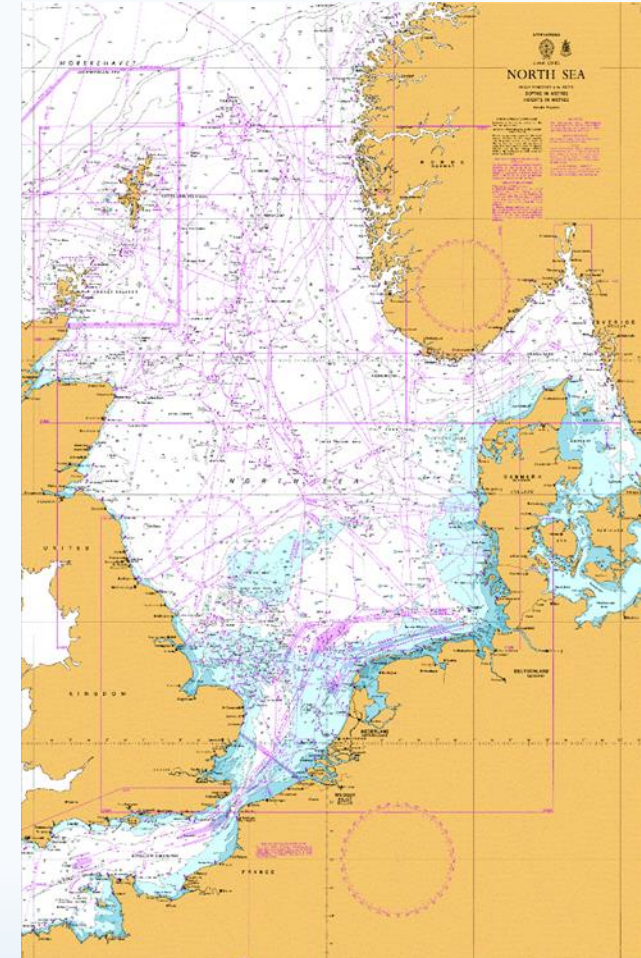


Report of the ICC Working Group

NSICCWG Report for NSHC 35 April 2022

Author WG Coordinator: Ashley Hawkins
Presented by: James Coles



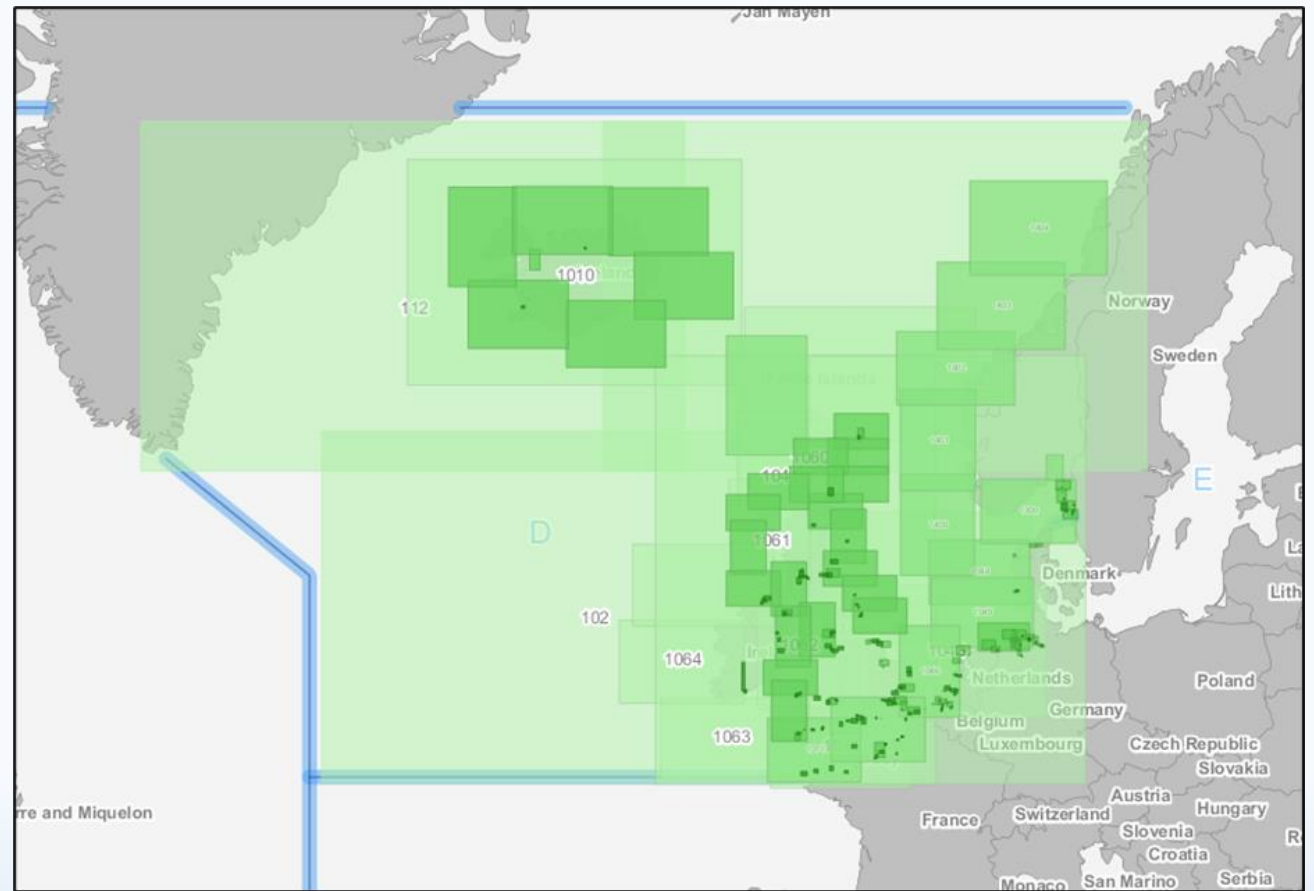
Report of the ICC Working Group

INT CHART OVERVIEW

REGION D INT CHART PANELS BY USAGE

Overview	17	General	13
Coastal	64 (including plans)	Approach	70 (including plans)
Harbour	232 (including plans)	Berthing	40 (including plans)
Total	436 (including plans)		

- Mature and stable scheme
- Small Amendments since NSHC 34 in 2021



IHO

International
Hydrographic
Organization

Report of the ICC Working Group

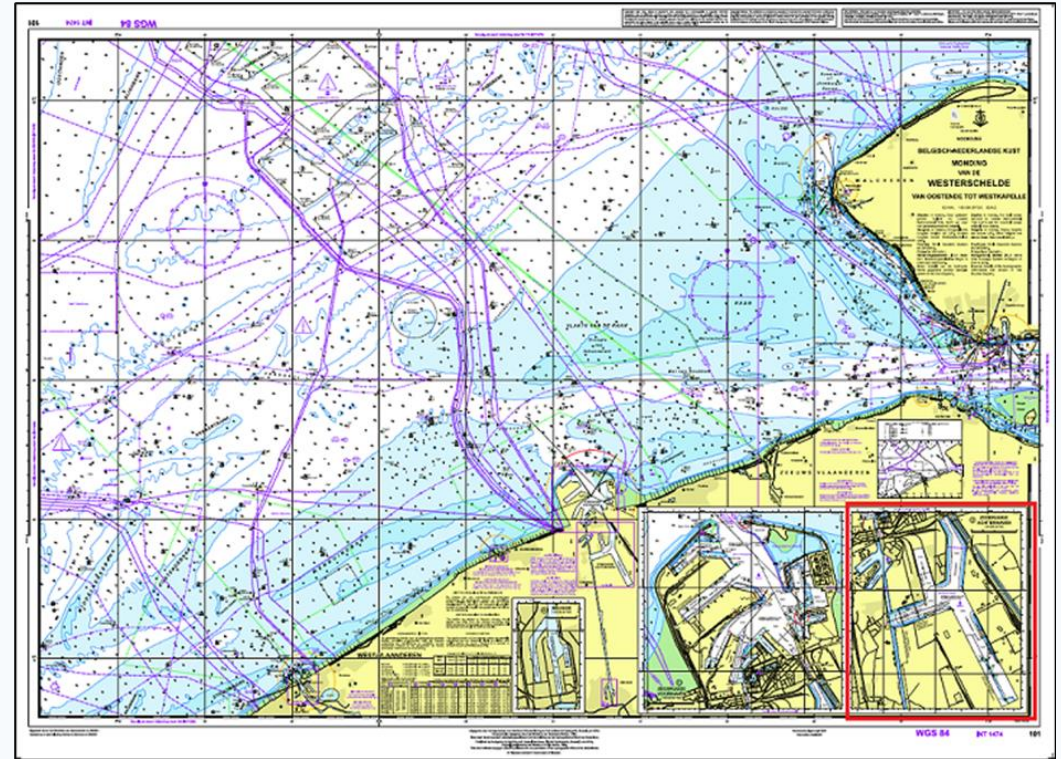
INT CHART SCHEME AMENDMENTS SINCE 2021

Belgium

Belgium have published an amendment to INT1474. This change saw the inclusion of a new inset plan of the Port of Zeebrugge Achterhaven at scale 1:20,000. The revised Chart was published in April 2021.

France

As part of their paper rationalisation, France have withdrawn as a printer nation of 13 INT charts in the Region D area.



IHO

International
Hydrographic
Organization

Report of the ICC Working Group

INT CHART SCHEME AMENDMENTS SINCE 2021

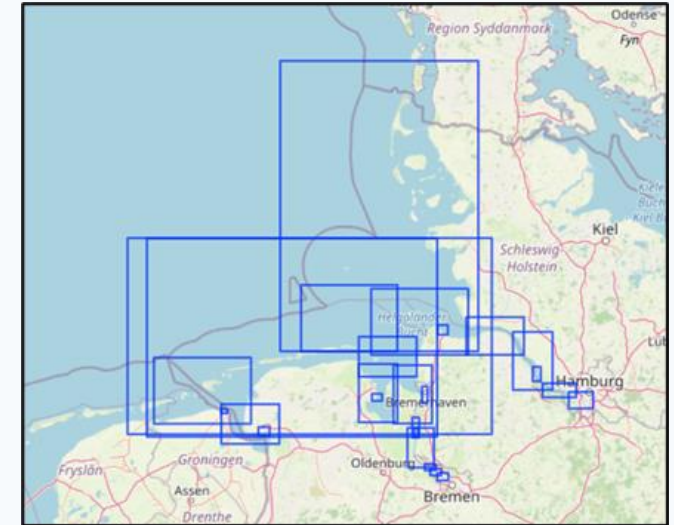
Germany

Germany has completed the transfer of INT charts to AO size and standardised scales of 1:12,500, 1:30,000, 1:50,000, 1:150,000 for Region D.

These INT charts are co-published with GB.

The speciality of these charts is the reduction of content in the shallow waters up to the 5m contour line.

For navigation within shallow areas users should instead refer to the DE national chart series or DE ENCs.

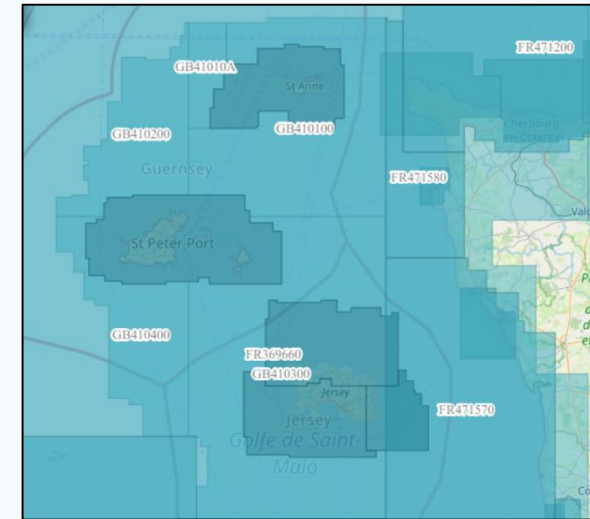


Report of the ICC Working Group

ENC SCHEME AMENDMENTS SINCE 2021

France & United Kingdom

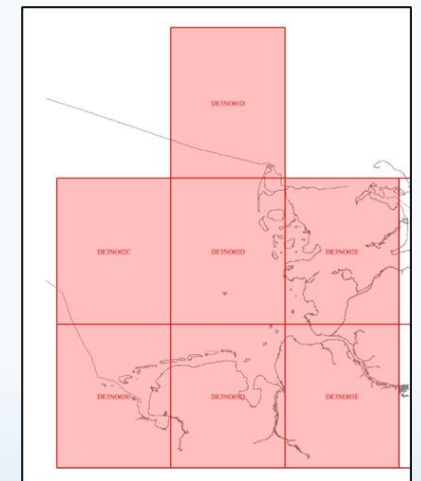
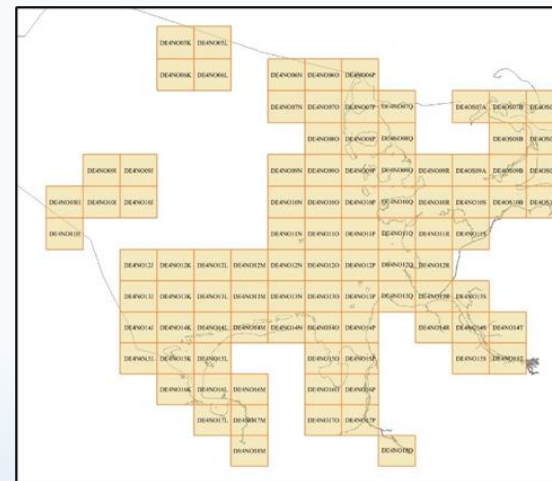
France & United Kingdom are working together to re-scheme ENC coverage of the Channel Islands.



Germany

Germany is continuing the process of rescheming its Approach and Coastal ENC's to a gridded system.

In the North Sea region this work has now been completed, as shown across.



Report of the ICC Working Group

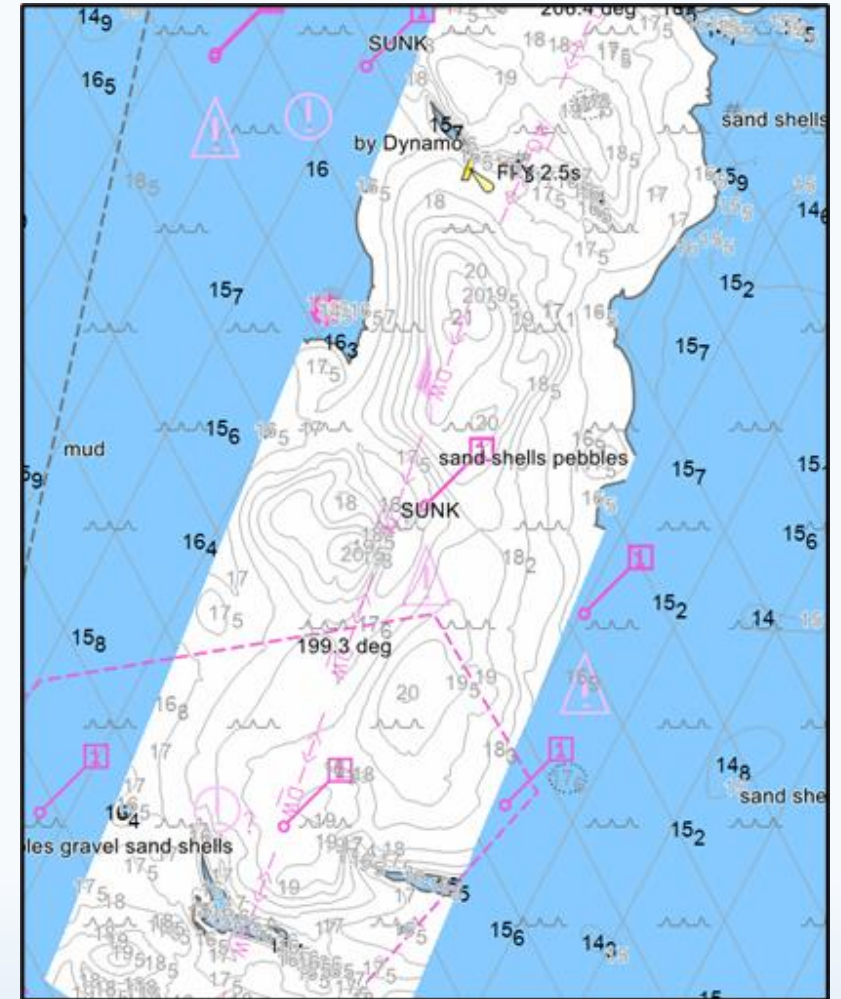
ENC SCHEME AMENDMENTS SINCE 2021

United Kingdom

United Kingdom is expanding the number of HD ENC's providing contouring at 0.5m or 1.0m intervals.

3 additional HD ENC's have been issued as well as reschemed ENC in the Dover Strait to improve usability following feedback.

Additional HD ENC's are being produced focussing on areas constrained traffic and/or critical under keel clearance.



Report of the ICC Working Group

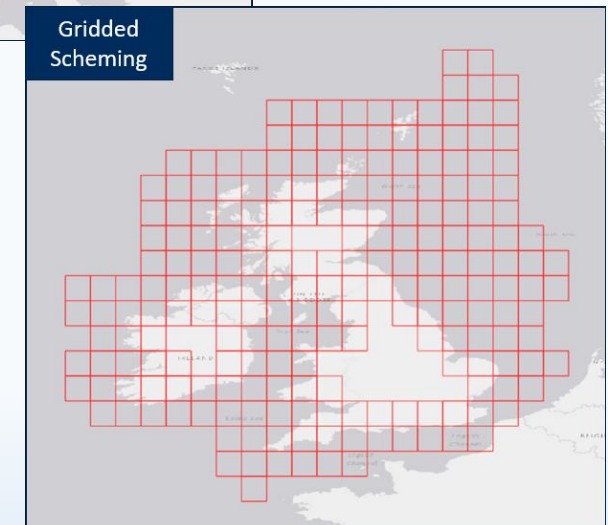
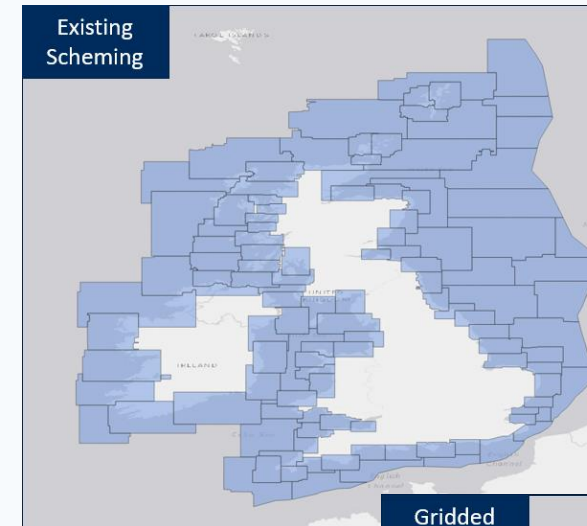
ENC SCHEME AMENDMENTS SINCE 2021

United Kingdom

United Kingdom is also embarking on a comprehensive programme of ENC Improvement to develop the service and the user experience.

The project scope covers all GB ENC coverage and there are many different components including:

- Scale, Area, and Line Feature Consistency
- Isolated Danger Attribution
- A Regular Gridded Scheme (Band 3 example shown)
- Additional Contouring



Report of the ICC Working Group

ENC Overlaps and Gaps Issue

The NSHC representative to WEND reported on this issue at WENDWG12. This is a long standing issue that NSICCWG members feel needs resolving by relaxing the IHO guidance of only allowing a 5 metre overlap buffer zone at national data limits.

IHO Resolution 1/2018 Chapter 2.1.8 - Seamless ENC coverage, S-57, APPENDIX B.1, Annex A - Use of the Object Catalogue for ENC.

“There must be no gaps in data between adjoining cells of the same Navigational Purpose. Similarly, there must be no overlapping data between cells of the same Navigational Purpose (see S 57 Appendix B.1 – ENC Product Specification, clause 2.2), except at the agreed adjoining national data limits, where, if it is difficult to achieve a perfect join, a 5-metre overlapping buffer zone may be used.”

NSICCWG Members believe a more pragmatic approach should be employed in our region which recognises the management work conducted by the RENCs on the matter and the risk assessments that they conduct.

The following recommendation was made for WENDWG12 to note:

- NSICC and WENDWG Representative will support and encourage members to resolve overlaps deemed as **High Risk** and **Medium Risk** overlaps would also be considered as ‘HO Must Correct’ which would mean all overlaps for most Band 3 and 4 cells (used for navigation) must be resolved alongside those for Bands 5 and 6.
- In future NSHC will report on ENC overlaps deemed medium and high risk and ENC gaps that are larger than 1mm at compilation scale. At present none exist.

The NSHC is invited to:

- **Note** the status of the INT Chart schemes via IHO INTToGIS and ENC Chart Catalogue links.
- **Note** the recommendation made to WENDWG 12 that NSHC will report on ENC overlaps deemed as medium and high risk and ENC gaps greater than 1mm at compilation scale.



IHO

International
Hydrographic
Organization

35th North Sea Hydrographic Commission Meeting
(NSHC) Hybrid Meeting 5-6 April 2022