

36th North Sea Hydrographic Commission Meeting (NSHC)

29th to 30th March 2023

Report of North Sea International Charting Co-ordination Working Group (NSICCWG)

Submitted by: Ashley Hawkins - NSICCWG Chairman: February 2023

Related Documents: Minutes of NSHC35 April 2022

Background

1. The North Sea International Chart Committee (NSICC) devised the original scheme of International Charts of the North Sea. Details were set out as Appendix F to the NSICC Report to the XIth International Hydrographic Conference (1977)
2. After discontinuation of the NSICC in 1983 the North Sea International Chart Sub-Committee (NSICSC) succeeded this group (Conclusion 43 of the 14th NSHC Conference).
3. The NSICSC, in turn, was disbanded in 1988 (Conclusion 52 of the 17th NSHC-Conference), but an Ad-Hoc Working Group on INT Charts was established at the same meeting (Conclusion 53)
4. In 1989 (18th NSHC Conf.) the Ad-Hoc group was replaced by the NSHC INT Chart Scheming Group (Conclusion 56); the Chairman was provided by the Netherlands.
5. During the 20th NSHC Conference it was concluded to change the name into North-West European Charting Group (Region D) because the charts covered a larger area than the North Sea.
6. The Netherlands provided the Chairman/Coordinator, Hans Ferwerda, for the North-West European Charting Group (Region D) until June 2004. The United Kingdom has provided the Chairman since then.
7. At the NSHC 29th Conference in September 2010 (Conclusion 85), the NSHC Members agreed to change the name of the NW European Charting WG to the North Sea International Charting Co-ordination Working Group (NSICCWG) The NSHC 29th Conference also established the North Sea ENC Harmonization Working Group (NSEHWG) which reported for the first time at the 30th Conference.
8. The NSEHWG was disbanded at the NSHC 32nd Conference in June 2016 (NSHC decision 11/2016) because the ENC scheme in the region had reached maturity with few if any issues. The decision was taken to incorporate the remaining relevant tasks of the NSEHWG, as well as ENC coordination in the region, into the new ToR for the NSICCWG this was done at the to align it with the ToRs of other regional ICCWGs. At the 33rd Conference, the new NSICCWG ToR were agreed. Additional adjustments to the ToR were agreed at NSHC 34.

9. Overview

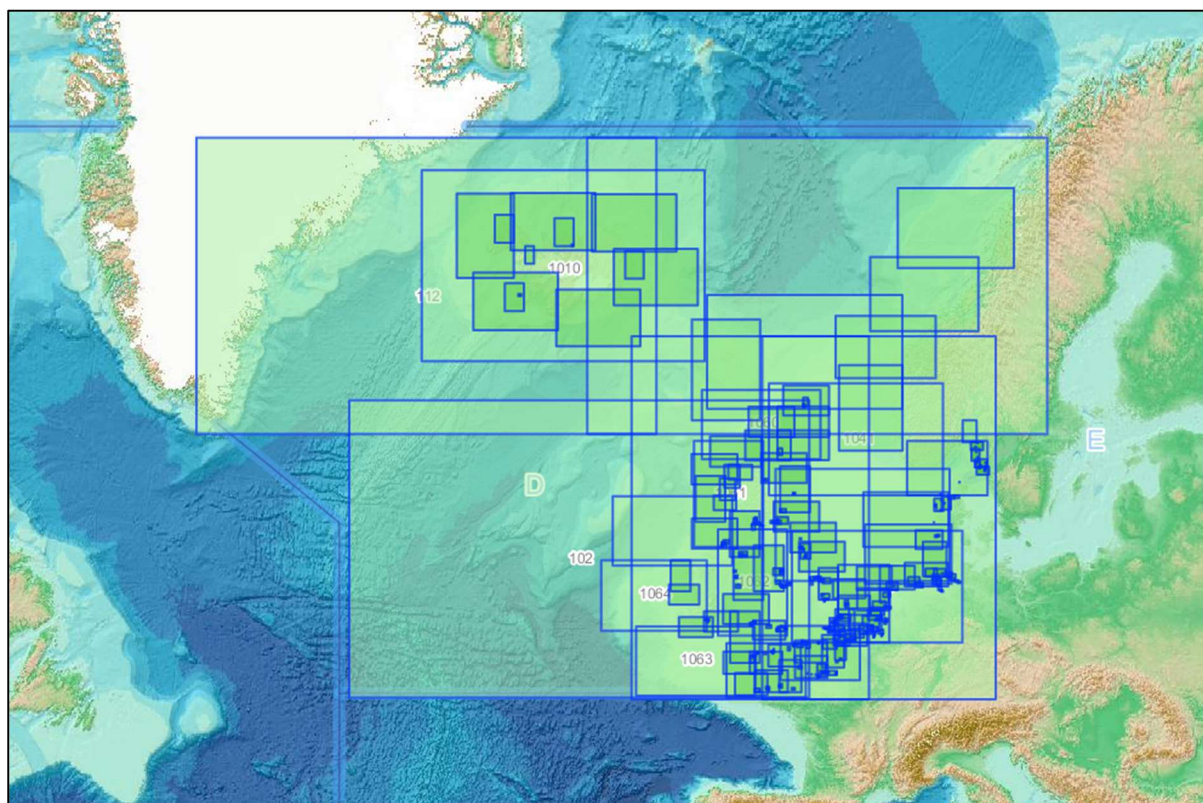
9.1 Revised management review and monitoring of INT charts (IHO CL64\15 and 89/15 refer)

In 2015, IHO CLs 64/15 and 89/15 detailed the new procedures for the management review and monitoring of INT charts. The main elements of the new process are as follows:

- All new INT Charts to be submitted to Regional INT Chart Coordinator (ICCWG) for review.
- INT Chart Coordinator (ICCWG) to verify chart's compliance with IHO standards and to provide feedback to the Producer Nation.
- Modernisation of IHO Publication S-11 Part B by implementation of the new INT Chart web catalogue (INToGIS). Responsibility for updating the INToGIS system for chart updates now lies with member states rather than the INT Chart Coordinator.

All of the above have been implemented in Area D. There are, however, still a few member states who have yet to update the web catalogue for changes to their INT charts despite reminders. We urge members to ensure the web catalogue is updated so that it remains authoritative.

9.2 INT CHARTING.



REGION D INT CHART PANELS BY USAGE

Overview	17	General	12
Coastal	63 (including plans)	Approach	70 (including plans)
Harbour	239 (including plans)	Berthing	17 (including plans)
Total	418 (including plans)		

Note: Figures this year remove those panels captured for title panels on sheets of plans.

REGION D INT CHARTS BY PRODUCER NATION

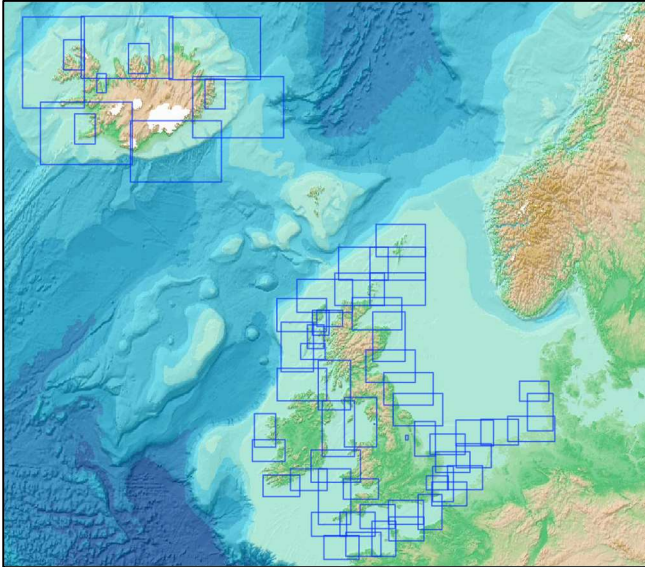
BE	3 charts	(10 panels)
DE	15 charts	(28 panels)
DK	8 charts	(27 panels)
FR	24 charts	(42 panels)
GB	125 charts	(232 panels)
IS	14 charts	(15 panels)
NL	20 charts	(38 panels)
NO	6 charts	(6 panels)
SE	5 charts	(20 panels)
Total	220 Charts	(418 panels)

Note: GB Charts includes those covering Ireland.

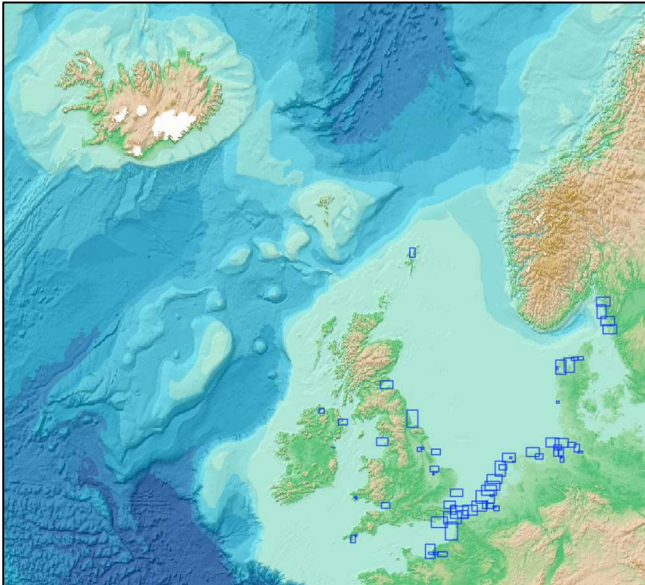
CO-PRODUCED REGION D INT CHARTS

DE & GB	14 Charts (27 panels)
FR & GB	4 Charts (4 panels)
GB & NL	18 Charts (36 panels)

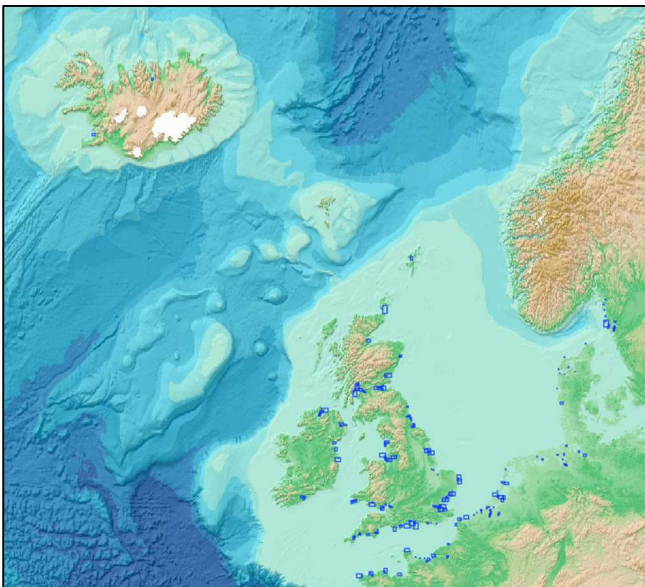
Coastal



Approach



Harbour



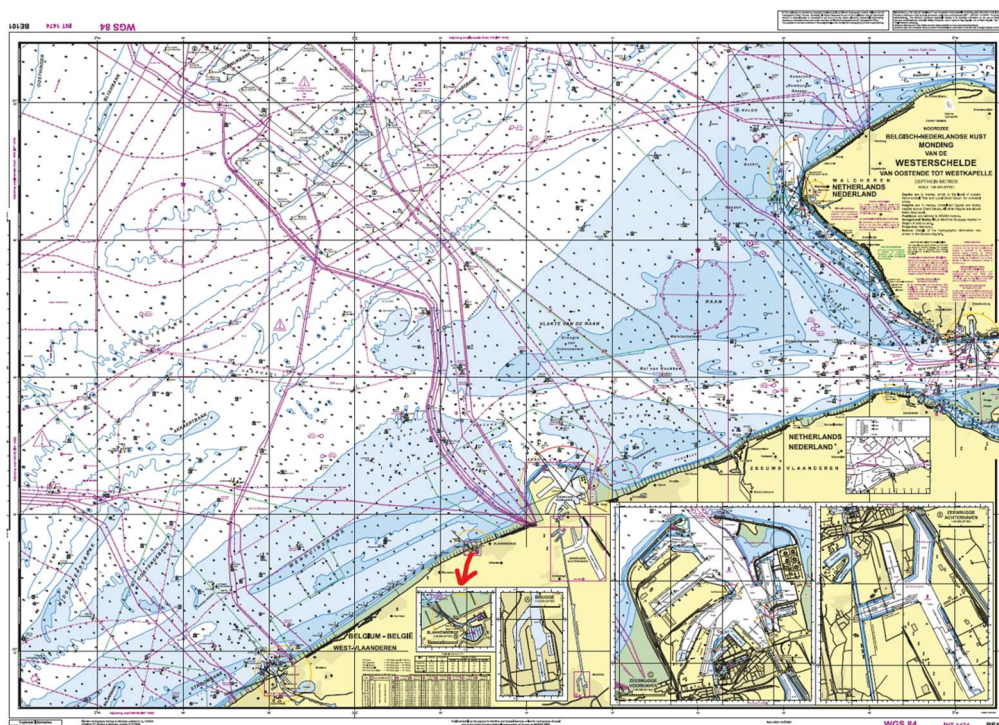
There are 220 full INT Charts containing 418 navigational panels in the region. There has only been an increase of one chart and two panels in the last year. Region D has a mature INT chart scheme compared to other INT Regions and changes continue to be relatively few in number. As such there has been no requirement for Members to meet for many years. All matters are dealt with by correspondence.

Nevertheless there have been some changes and developments to the INT charting scheme and ENC coverage since NSHC35 in 2022. Details are given in sections 10 and 11 below.

10. REGION D INT Chart changes since 2022

Belgium

Belgium is progressing a minor change to INT1474 (National Chart BE101) which will see the addition of a small plan covering the port of Blankenberge. This provides the port coverage on the same chart as the best scale approach and also enables Belgium to amend smaller scale national chart DE11. The addition of the new plan on INT1474 has no impact on the purpose or usage of this chart in supporting international shipping.

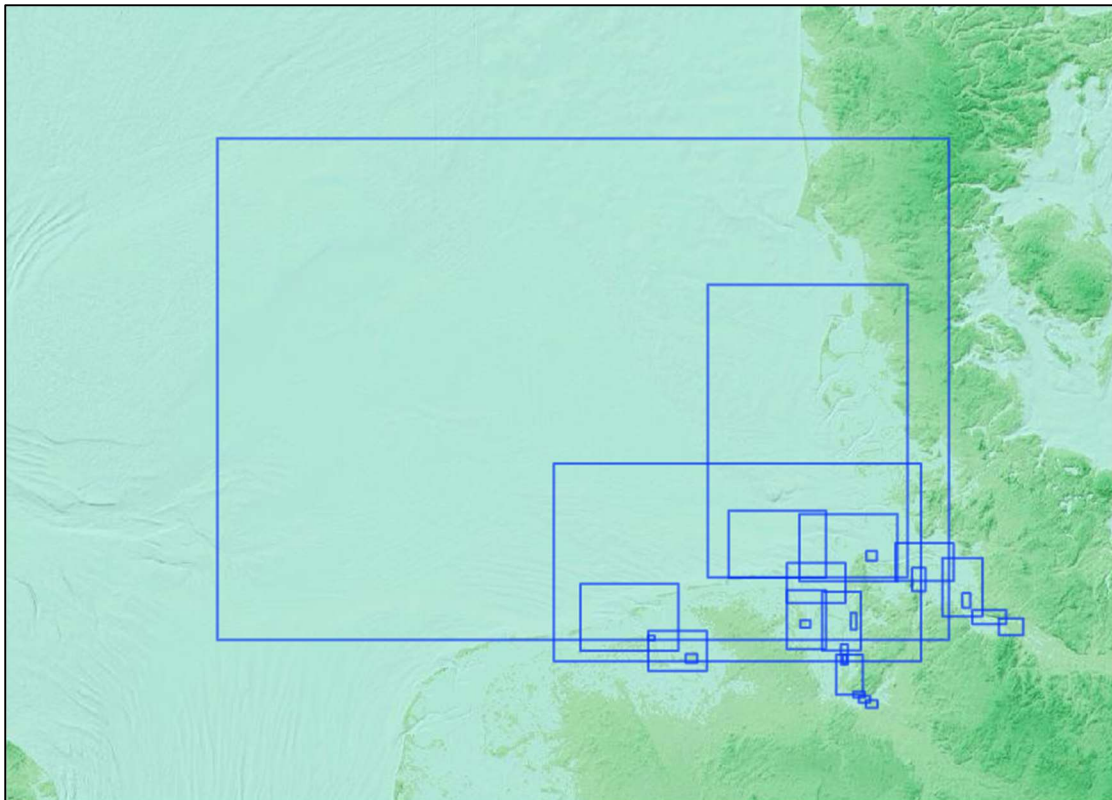


France

France confirmed removal of 13 adopted Region D INT Charts from their series at the end of 2021. The 13 charts covered ports and approaches in Southern England, South and West Ireland and Small Scale coverage of the North Sea.

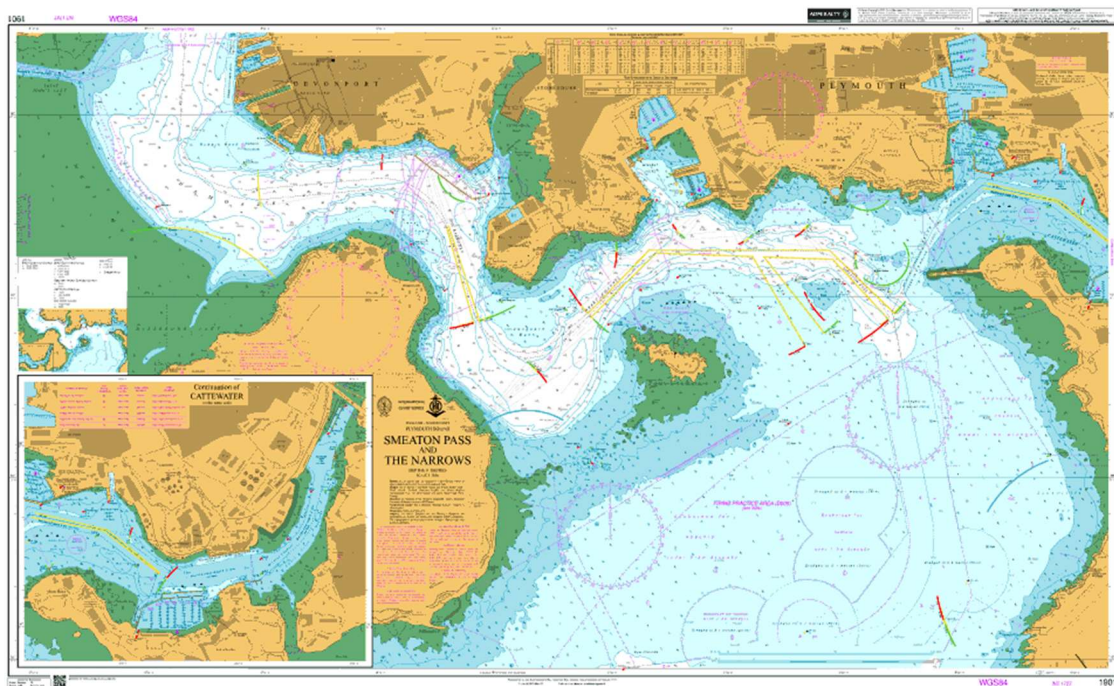
Germany

With publication of INT 1045 (National Chart DE50) at 1:375,000, Germany has completed its co-production with GB for INT charts covering German waters within the North Sea (Region D). In addition to the General scale coverage, the scheme uses standardised scales of 1:12,500, 1:30,000, 1:50,000, 1:150,000.



United Kingdom

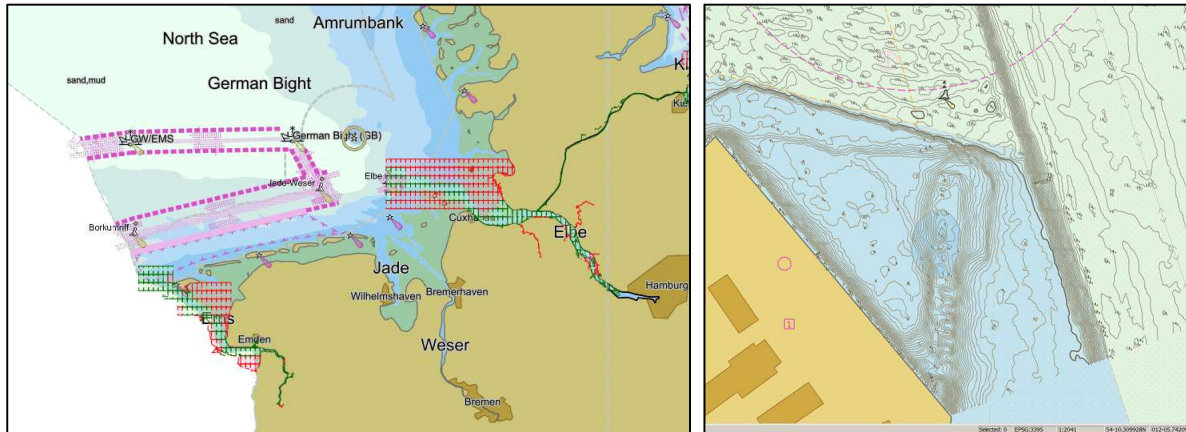
United Kingdom has published a new INT Chart, using national chart 1901, covering the inner approaches and commercial ports at Plymouth. This new INT Chart, 1727, supplements existing INT coverage of the port approach by INT Chart 1722. Originally proposed and agreed as an INT Chart in 2016, this has now been completed through publication of a new edition of national chart 1901 in February 2023.



11. ENC Rescheming since 2022

Germany

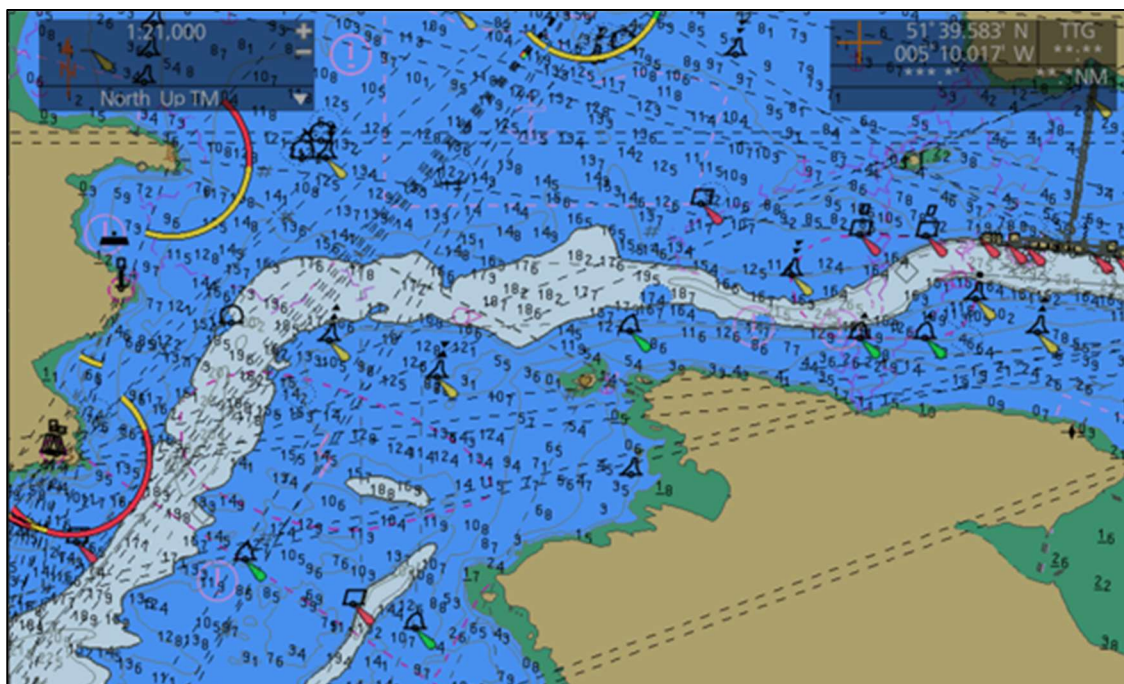
Following completion of rescheming its Approach and Coastal ENCs to a gridded system in the North Sea region, Germany has begun work on a new project for bathymetric ENCs (bENCs – additional bathymetric layer) overlays as a precursor for delivery of S-102. Project areas in the North Sea include the Rivers Ems and Elbe and Kiel Canal. Based on the S-102 data model BSH process the source survey data for the production of bENCs defined for a special user group, e.g. Pilots and Vessel Traffic Service. The product specification is very close to S-57 (inland ENCs).



United Kingdom

United Kingdom has issued 3 additional HD ENCs, two in the Sunk with contours at 0.5m and one covering Shipway Channel approaching Harwich at 1m intervals. These are either cut into or extending the existing Band 4 coverage. Display is managed using SCMAIN so that clutter is removed so by default users see the standard contours plus their set safety contour. Full data is viewable by turning off the SCAMIN application.

United Kingdom is progressing the ENC improvement programme commented on last year. The first area published covers Milford Haven and implements a gridded scheme, improving consistency and coverage and includes supplementary contours at 1m intervals throughout the port and approach. The image below shows the new ENCs as shown on an ECDIS with the safety contour set at 17m. On standard ENCs the entire area would be shown as dangerous behind the 20m contour if a safety depth of 17m was set.



France and United Kingdom are continuing to work together to re-scheme ENC coverage of the Channel Islands for producer consistency through the scale Bands with each maintaining national coverage within their own waters in place of the existing arrangement with producer based on usage band.

12. ENC Overlaps and gaps

No ENC overlaps deemed medium or high risk (as per RENC risk assessment) or gaps greater than 1mm at compilation scale are currently found within Region D.

13. NSHC35 Action 8/2022 D.2

HSSC Recommendation 2, as assigned to RHCs at IRCC13: *RHCs to recommend Member States to Note the information on ECDIS anomalies and support the implementation of the recommendations given by the ENCWG.* IHO Circular Letter (CL) 4-/2021 refers, with ENC Encoding Bulletin (EB) 64 being issued.

This issue was raised with NSICCWG members, with all responding members confirming the issue is checked using relevant validation tests, with New Editions created as guided through EB 64 if the related error is reported. RENCs are also checking for this error.

14. WEND100-IGIF Matrix

NSICCWG Chair supported NSHC representative to WENDWG in completion of the WEND100-IGIF Matrix for the NSHC, largely based upon the results of NSHC member submissions in response to the S-1XX questionnaire created by Belgium under NSHC35 Action 6/22 B4.1. This is to be reported at WENDWG-13 Agenda item 5.3.

15. The NSHC is invited to:

- a. Note the status of the INT Chart schemes via IHO INTOGIS and ENC Chart Catalogue links.

Ashley Hawkins - NSICCWG Chairman.

February 2023