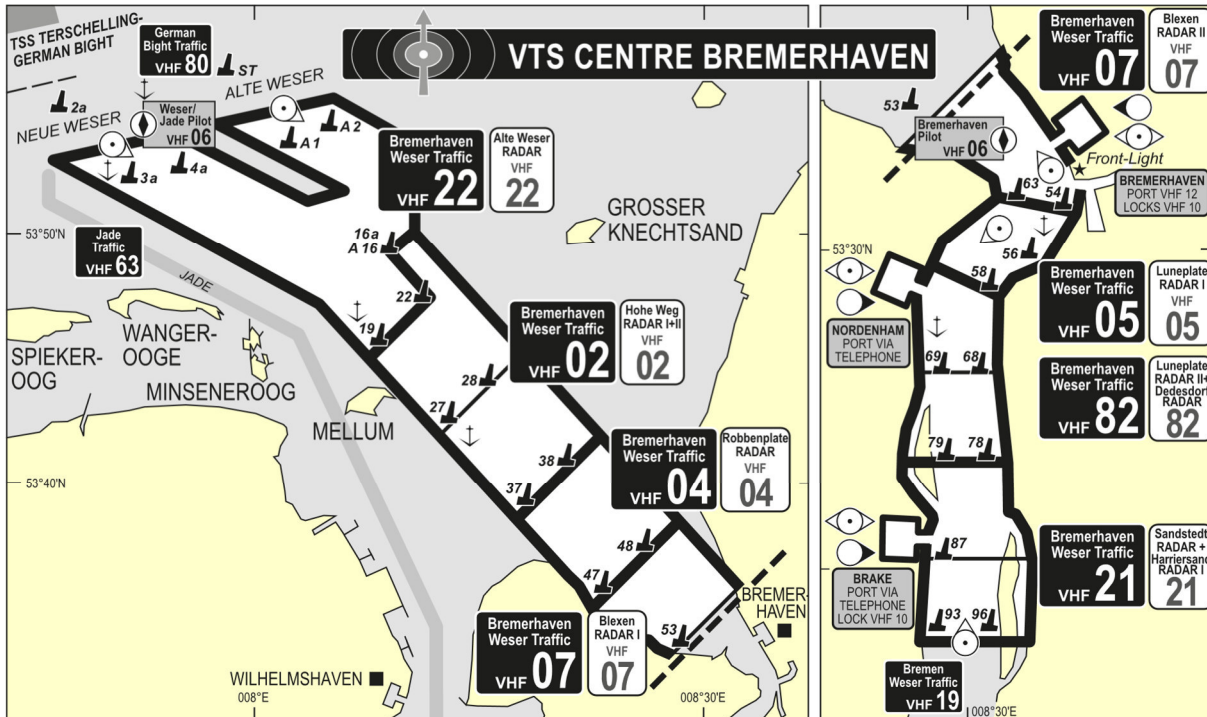


### C 3.1 Bremerhaven Weser Traffic

#### Vessel Traffic Service

Area

see diagram



Station

VTS Centre Bremerhaven



Contact Details

Call: Bremerhaven Weser Traffic  
 Frequency: see diagram  
 Telephone: +49 (0) 4 71 4 83 53 33  
 Fax: +49 (0) 4 71 4 83 52 00  
 E-mail: vts-bremerhaven@wsv.bund.de

Continuous listening watch

when entering on VHF working channels and VHF channel 16

## Reports

Status	Who	When/Where	to whom	What
<b>Sailing Plan</b> 	<ul style="list-style-type: none"> <li>vessels of 50 m in length or more, including pushed or towed composite units</li> <li>vessels carrying dangerous goods in bulk (gas / chemicals / petroleum / petroleum products)</li> <li>unloaded tankers if not cleaned, degassed or completely inerted after carrying petroleum / petroleum products / chemicals with a flash-point below 35 °C</li> </ul>	<ul style="list-style-type: none"> <li>before entering the VTS area               <ul style="list-style-type: none"> <li>– from sea (if not already reported by SP to German Bight Traffic see page 16)</li> <li>– from a harbour or berth within the VTS area</li> </ul> </li> </ul>	Bremerhaven Weser Traffic	A vessel's name and call sign D vessel's position U vessel's length (metres), beam (decimetres) and type O vessel's draught (decimetres) G port of departure I port of destination P indication if liquefied gases, chemicals, or petroleum / petroleum products are / were carried in bulk, and in case: type, quantity, UN-number and if tanks are not cleaned or if they are completely inerted Q indication of deficiencies, restrictions of manoeuvrability T names of the vessel's owner or the latter's agents W number of persons on board
<b>Position Report</b> 	vessels mandatory to report as for Sailing Plan	<ul style="list-style-type: none"> <li>when entering the VTS area               <ul style="list-style-type: none"> <li>– at reporting pointssshown on diagram</li> </ul> </li> </ul>	Bremerhaven Weser Traffic	A vessel's name and call sign B passing time D position F speed
<b>Deviation Report</b>	vessels mandatory to report as for Sailing Plan	in case of amendments of Sailing Plan (e. g. when entering / leaving an anchorage)	Bremerhaven Weser Traffic	amendments of Sailing Plan
<b>Incident Report</b>	all vessels	in case of an incident impairing safety or environment	Bremerhaven Weser Traffic	details of incident, in case of DG / HS / MP all data mentioned page 10

## Rules

presuppositions for tankers carrying gas / chemicals / petroleum / petroleum products when entering the area of German Traffic Regulations for Navigable Maritime Waterways

all tankers

radar and VHF in operational state

tankers up to 2,000 tdw

visibility between 500 m and 1,000 m

tankers with more than 2,000 tdw

visibility more than 1,000 m

## Services

### Information Service

situation broadcast

times

every h + 20 min

frequencies

see diagram

languages

English and German

content

information relevant to the safe passage through the VTS area

general fairway and traffic situation (e. g. weather conditions, casualties, dredging operations, pilot information)

### Navigational Assistance Service

times

if instructed by VTS Centre Bremerhaven Weser Traffic

if visibility is less than 2,000 m

if pilot vessel is in a sheltered position

if light-buoys are withdrawn due to ice

if required by traffic situation

if requested by a vessel

frequencies

see diagram

languages

German

English on request

content

information, warnings and advice to single vessels or to the shipping in general to avoid dangers and to prevent accidents and / or threat to the environment

regular information about position and surrounding traffic

rules and regulations

when requesting, give A (name, call sign) and D (position) for identification

### Traffic Regulation Service

by instruction

regulatory measures to prevent accidents and / or threat to the environment

traffic management

### Maritime Assistance Service

in the event of an incident involving a ship

receive the reports, consultations and notifications

if a report discloses an incident that may give rise to a situation where the ship is in need of assistance

monitor the ship's situation

serve as the point of contact

between the master and the coastal State if the ship's situation requires exchanges of information between the ship and the coastal State other than a distress situation that could lead to a search and rescue operation

between those involved in a marine salvage operation undertaken by private facilities at the request of the company and the coastal State if the coastal State considers that it should monitor the conduct of the operation

**Pilotage**

Pilot District  
River Weser

**Pilot Service**

pilotage compulsory

tankers carrying gas / chemicals / petroleum / petroleum products in bulk, or unloaded tankers, if not cleaned, degassed or completely inerted after having carried petroleum / petroleum products or chemicals with a flashpoint below 35 °C

other vessels of 90 m in length or 13 m in beam; 8 m in draught or more if bound for Bremerhaven (Geeste estuary resp. Blexen Reede), 6.50 m in draught or more if bound for destinations above Bremerhaven

**Contact Details****Bremerhaven Pilot Station**

Call Bremerhaven Weser Pilot  
Frequency VHF channel 06  
Telephone +49 (0) 4 71 94 42 42  
Fax +49 (0) 4 71 9 44 24 39  
E-mail [dispo@weserjadepilot.de](mailto:dispo@weserjadepilot.de)  
Internet [www.weserjadepilot.de](http://www.weserjadepilot.de)

**Bremen Pilot Station**

Telephone +49 (0) 4 21 39 40 44  
Fax +49 (0) 4 21 38 22 43

**Pilot request**

Status	Who	When/Where	to whom	What
<b>Arrival</b>	pilotage compulsory vessels	at least 12 hrs before arrival at boarding place (also request river pilots for Weser ports between Bremerhaven and Bremen)	Bremerhaven Pilot Station	<ul style="list-style-type: none"> <li>– vessel's name, call sign, length, beam and gross tonnage (GT)</li> <li>– actual draught on arrival/ departure (in decimetres)</li> </ul>
<b>Departure</b>	pilotage compulsory vessels	<ul style="list-style-type: none"> <li>• at least 3 hrs before departure (also request sea pilots for Weser estuary off Bremerhaven)</li> <li>– departures between 1900–0800 request pilot before 1700</li> </ul>	Bremerhaven resp. Bremen Pilot Station	<ul style="list-style-type: none"> <li>– pilot boarding position</li> <li>– ETA/ETD at/from pilot boarding position</li> <li>– destination of pilotage required</li> <li>– indication whether transfer by pilot vessel or by helicopter</li> <li>– port of destination</li> <li>– port of departure</li> <li>– freeboard and distance from pilot door to the waterline</li> </ul>

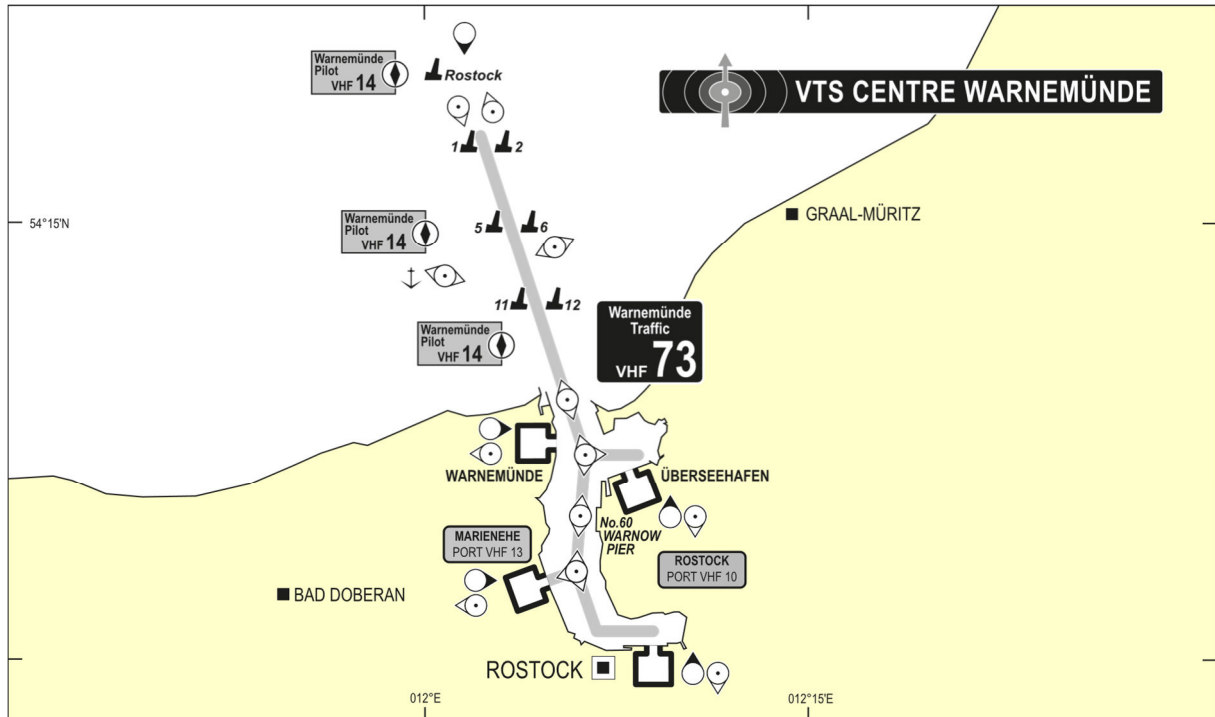
**Pilot boards****Boarding place**

near light-buoy "3 / Jade 2" (for Weser estuary and Bremerhaven)  
off Bremerhaven (for ports within Bremerhaven / Bremen range)

## C 10.1 Warnemünde Traffic

### Vessel Traffic Service

Area  
see diagram



### Station

VTS Centre Warnemünde



### Contact Details

Call	Warnemünde Traffic
Frequency	see diagram
Telephone	+49 (0) 3 81 20 67 18 41, 20 67 18 42
Fax	+49 (0) 3 81 20 67 18 45
E-mail	vkz-warnemuende@wsv.bund.de

### Continuous listening watch

when entering on VHF working channel and VHF channel 16

## Reports

Status	Who	When/Where	to whom	What
<b>Sailing Plan</b> 	<ul style="list-style-type: none"> <li>vessels of 30 m in length or more, including pushed or towed composite units</li> <li>vessels carrying dangerous goods in bulk (gas / chemicals / petroleum / petroleum products)</li> <li>unloaded tankers if not cleaned, degassed or completely inerted after carrying petroleum / petroleum products / chemicals with a flash-point below 35 °C</li> </ul>	<ul style="list-style-type: none"> <li>30 min before entering the fairway for Rostock</li> <li>before leaving a harbour or berth within the VTS area</li> </ul>	Warnemünde Traffic	A vessel's name and call sign D vessel's position U vessel's length (metres), beam (decimetres) and type O vessel's draught (decimetres) G port of departure I port of destination P indication if liquefied gases, chemicals, or petroleum / petroleum products are / were carried in bulk, and in case: type, quantity, UN-number and if tanks are not cleaned or if they are completely inerted Q indication of deficiencies, restrictions of manoeuvrability T names of the vessel's owner or the latter's agents
<b>Position Report</b> 	vessels mandatory to report as for Sailing Plan	<ul style="list-style-type: none"> <li>at reporting points shown on diagram</li> <li>after pilot embarkation</li> <li>when entering or leaving the fairway</li> <li>when turning in the Überseehafen turning basin</li> <li>– beginning and completion of the turning manoeuvre</li> </ul>	Warnemünde Traffic	A vessel's name and call sign B passing time D position F speed
<b>Deviation Report</b>	vessels mandatory to report as for Sailing Plan	in case of amendments of Sailing Plan (e. g. when entering / leaving an anchorage)	Warnemünde Traffic	amendments of Sailing Plan
<b>Incident Report</b>	all vessels	in case of an incident impairing safety or environment	Warnemünde Traffic	details of incident, in case of DG / HS / MP all data mentioned page 10

## Rules

presuppositions for tankers carrying gas / chemicals / petroleum / petroleum products when entering the area of German Traffic Regulations for Navigable Maritime Waterways

all tankers

visibility more than 1,000 m

radar and VHF in operational state

tankers up to 2,000 tdw

visibility between 500 m and 1,000 m

tankers exceeding 2,000 tdw, but not exceeding 140 m in length or 8.50 m in draught only with permission of the VTS Centre

## S e r v i c e s

### Information Service

- situation broadcast

- times

- every h + 15 min

- single reports if the VTS considers it necessary or on request

- frequencies

- see diagram

- languages

- English and German

- content

- information relevant to the safe passage through the VTS area

- general fairway and traffic situation (e. g. weather conditions, casualties, dredging operations, pilot information)

### Navigational Assistance Service

- not provided in the VTS area

### Traffic Regulation Service

- by instruction

- regulatory measures to prevent accidents and / or threat to the environment

- traffic management

### Maritime Assistance Service

- in the event of an incident involving a ship

- receive the reports, consultations and notifications

- if a report discloses an incident that may give rise to a situation where the ship is in need of assistance

- monitor the ship's situation

- serve as the point of contact

- between the master and the coastal State if the ship's situation requires exchanges of information between the ship and the coastal State other than a distress situation that could lead to a search and rescue operation

- between those involved in a marine salvage operation undertaken by private facilities at the request of the company and the coastal State if the coastal State considers that it should monitor the conduct of the operation

**Pilotage****Pilot District**

Rostock Warnemünde and River Warnow

**Pilot Service**

pilotage compulsory

tankers carrying gas / chemicals / petroleum / petroleum products in bulk, or unloaded tankers, if not cleaned, degassed or completely inerted after having carried petroleum / petroleum products or chemicals with a flashpoint below 35 °C

other vessels

from Rostock Approach to the berth No 60 Warnowpier

of 100 m in length or 15 m in beam or 7.5 m in draught or more

from berth No 60 Warnowpier to light-buoy "59/M2"

of 80 m in length or 11 m in beam or 6 m in draught or more

from light-buoy "59/M2" upriver to Stadthafen Rostock

of 60 m in length or 10 m in beam or 4.5 m in draught or more

**Contact Details****Warnemünde Pilot Station**

Call Warnemünde Pilot  
 Frequency VHF channel 14, 16  
 Telephone +49 (0) 3 81 2 06 03 50  
 Fax +49 (0) 3 81 2 06 03 51  
 E-mail station@rostockpilot.de  
 Internet www.wismar-rostock-stralsund-pilots.de

**Pilot Vessel**

Call Warnemünde Pilot  
 Frequency VHF channel 14

**Pilot request**

Status	Who	When/Where	to whom	What
<b>Arrival</b>	pilotage compulsory vessels	at least 3 hrs before arrival at boarding position	Warnemünde Pilot Station	– vessel's name, call sign – length, beam and gross tonnage (GT)
<b>Departure</b>	pilotage compulsory vessels	<ul style="list-style-type: none"> <li>• at least 3 hrs before departure</li> <li>– departures between 1900–0700 request pilot before 1700</li> </ul>	Warnemünde Pilot Station	– ETA at pilot boarding position – destination of pilotage required – actual draught – speed – agency

**Pilot boards**

Boarding place

near light-buoy "Rostock" (vessels over 11.58 m draught)

near light-buoy "5" (vessels over 6.5 m draught)

near light-buoy "11" (vessels of 6.5 m draught or less)