

SAIHC17

9th SAIHC INT CHART COORDINATION WORKING GROUP (ICCWG)

VTC UPDATE

3 February 2021

ICCWG Chair

Alfons Van Craeynest

9th ICCWG Meeting Report - Highlights and Updates

- **Actions arising from the 9th ICCWG meeting**
- **Region H Chart Scheme**
- **ENC Overlaps within Region H**
- **SAIHC ENC Scheme – Gridded ENC Option**
- **Future of the Paper Nautical Chart**

Actions arising from the 8th ICCWG Meeting

Serial No	Subject	Action	Remarks
ICCWG-8 Action 1	ICC-WG Coordinator to contact Russia and Australia to resolve ENC overlap.	ICC-Coordinator	Ongoing
ICCWG-8 Action 4	To define ENC scheme for SAIHC Region H.	ICC-Coordinator	Developments wrt the IHO GIS will assist in identifying existing gaps in the ENC schema and serve as a tool for future planning of ENC within the region. Ongoing
ICCWG-8 Action 8	INT 7645 – the Scheme has been proposed and is in process. As soon as the limits have been established they are to be forwarded to the chairman for inclusion in S11.	Portugal Mozambique	MZ has confirmed chart limits (S-11). Awaiting new survey data. Ongoing

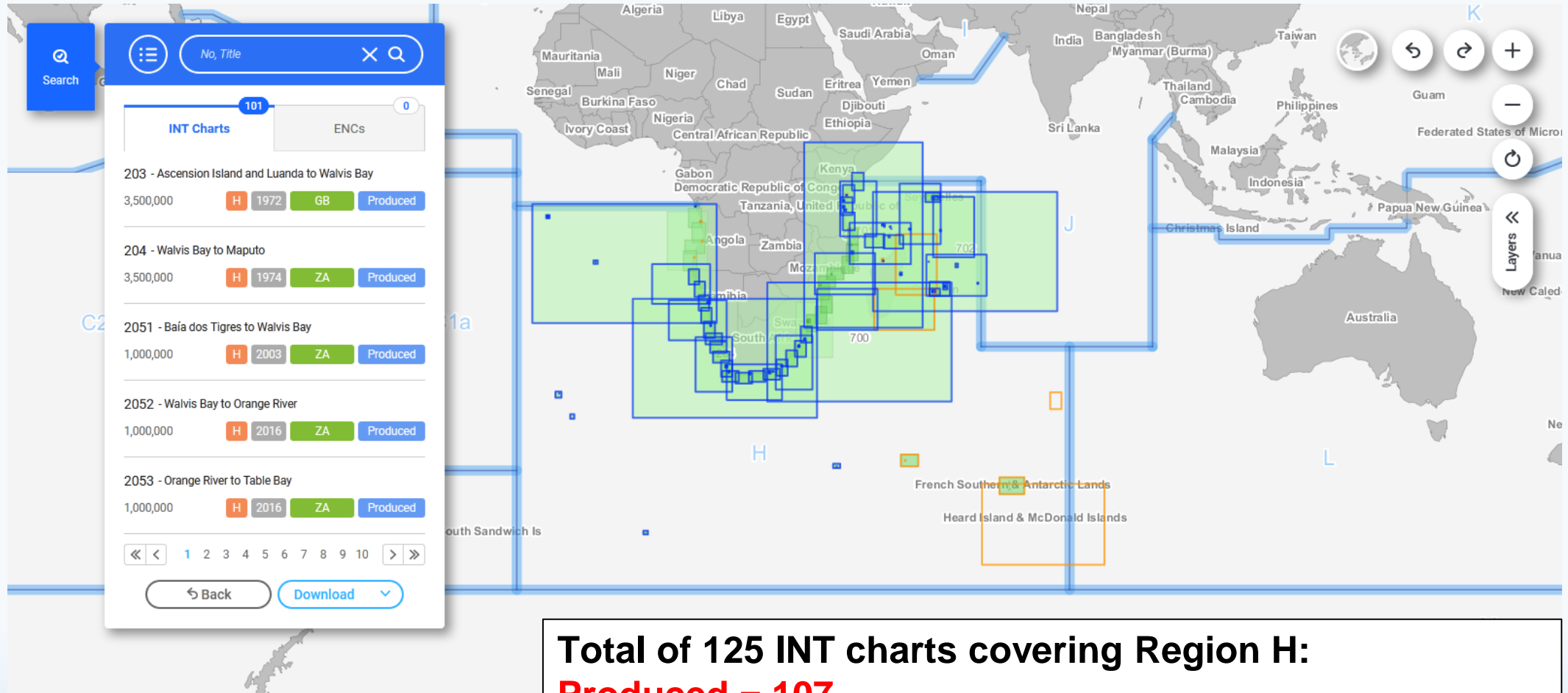
Actions arising from the 8th ICCWG Meeting

ICCWG-8 Action 9	Member States to feedback comments on how CATZOC is to be used to DQWG.	Member States	10 nations have provided feedback to date. Chair asked SAIHC members to please feedback/carry out action if not done so. Ongoing
ICCWG-8 Action 10	UK, Tanzania, Kenya, and India to coordinate ENC requirements to provide the latest data in a carriage compliant product for the Mariner and report back to ICCWG coordinator.	UK, Tanzania, Kenya, India	Ongoing
ICCWG-8 Action 12	India and UK to confirm when overlaps with GB ENCs have been removed in Seychelles, Tanzania and Mozambique.	India and UK	Ongoing

Actions arising from the 9th ICCWG Meeting

Serial No	Subject	Action	Remarks
ICCWG 9/1	INT 7583 (Maputo) - survey in progress and chart production to start as soon as possible.	Portugal Mozambique	
ICCWG 9/2	INT 7631 (Beira Harbour Approach) - chart production in progress.	Portugal Mozambique	
ICCWG 9/3	INT7641 (Quelimane Harbour Approach) – new survey planned during first quarter of 2021. New edition of chart in discussion.	Portugal Mozambique	
ICCWG 9/4	South Africa and France to confirm when ENC overlap between ZA100030 and FR277980 has been resolved.	South Africa France	

Region H - INT Chart Scheme



Total of 125 INT charts covering Region H:
Produced = 107
Schemed = 18

Region H - INT Chart Scheme

New INT Charts Produced (2020)

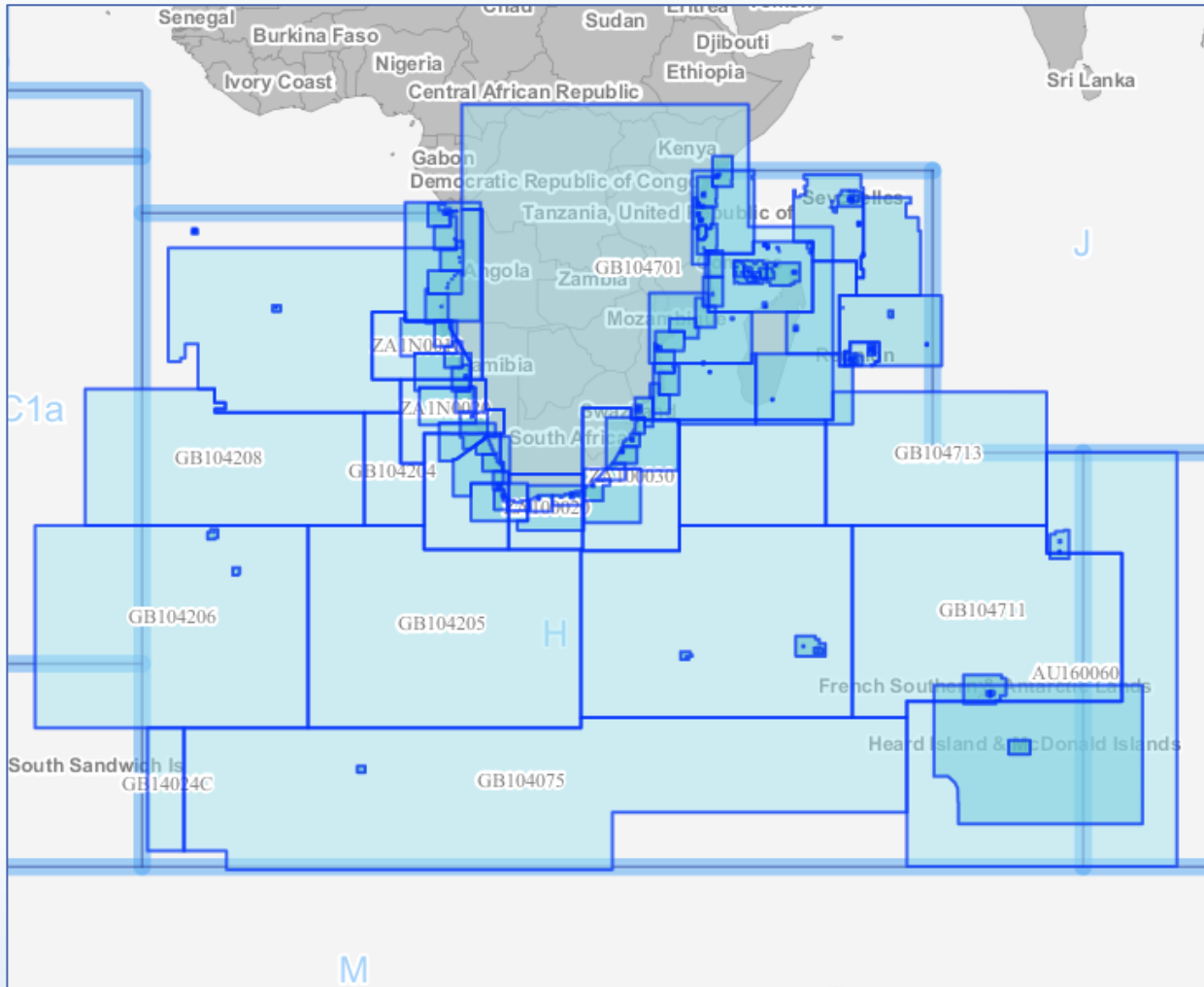
INTRegion	INTChart Number	Producers	NatChart Number	INT TITLE / <i>TITRE</i>	S_Limit	N_Limit	W_Limit	E_Limit	1 st Ed Year
H	7052	MZ PT ZA	SAN 95	Durban to Inhambane	31°40.00'S	22°50.00'S	30°30.00'E	37°8.00'E	2020
H	7580	MZ PT ZA	SAN 88	Jesser Point to Boa Paz	27°37.00'S	24°50.00'S	32°25.00'E	34°20.00'E	2020
H	7632	MZ PT	MZ16303	Porto da Beira	19°54.00'S	19°47.00'S	34°45.50'E	34°51.60'E	2020
H	7666	MZ PT	MZ16206	Pemba (Porto Amelia)	13°3.00'S	12°51.00'S	40°23.00'E	40°39.00'E	2020

Region H - INT Chart Scheme

Member States – Expectations

- **Maintenance of S-11 Web Catalogue**
- **Consultation**
- **Review of INT charts and ENC's**
- **Monitoring of INT charts**
- **Surveys**

ENC Coverage within Region H



Number of ENCs per Usage Band

Berthing UB6 = 21

Harbour UB5 = 68

Approach UB4 = 74

Coastal UB3 = 55

General UB2 = 21

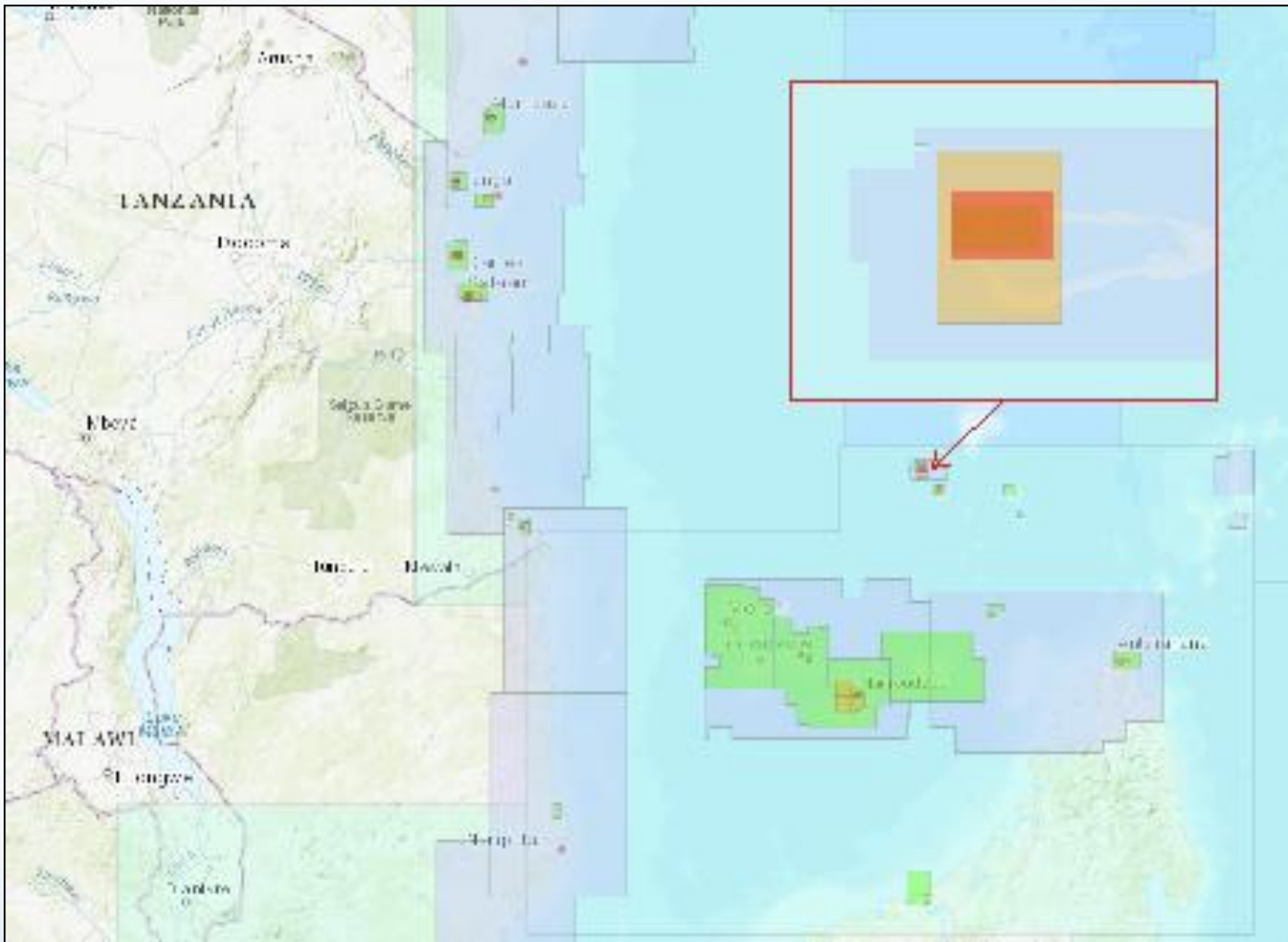
Overview UB1 = 18

**Total of 257 ENCs which provide coverage
Region H**

ENC Overlaps within Region H

STATUS	RENC Membership	RHC	ENC 1	ENC 2	Usage Band	Overall Severity of Risk
LIVE	IC-ENC	SAIHC/HCA	RU1A2K00	AU160060	1	LOW
LIVE	IC-ENC-PRIMAR	SAIHC	ZA100030	FR277980	1/2	LOW
LIVE	IC-ENC - PRIMAR	SAIHC	GB54232A	IN52520A	5	LOW
LIVE	IC-ENC - PRIMAR	SAIHC	GB500722	IN52551A	5	MEDIUM
				IN52552W		MEDIUM
LIVE	IC-ENC - PRIMAR	SAIHC	GB502758	IN52510B	5	MEDIUM
				IN52511A		MEDIUM
LIVE	IC-ENC-PRIMAR	SAIHC	GB54232A	IN62516D	5/6	MEDIUM
LIVE	IC-ENC	SAIHC	GB40718C	IN52555I	4/5	MEDIUM
LIVE	IC-ENC	SAIHC	GB50663A	IN62693T	5/6	MEDIUM
LIVE	IC-ENC	SAIHC	GB54231A	IN62524P	5/6	MEDIUM
LIVE	IC-ENC	SAIHC	GB54232A	IN62517N	5/6	MEDIUM

ENC Overlaps within Region H

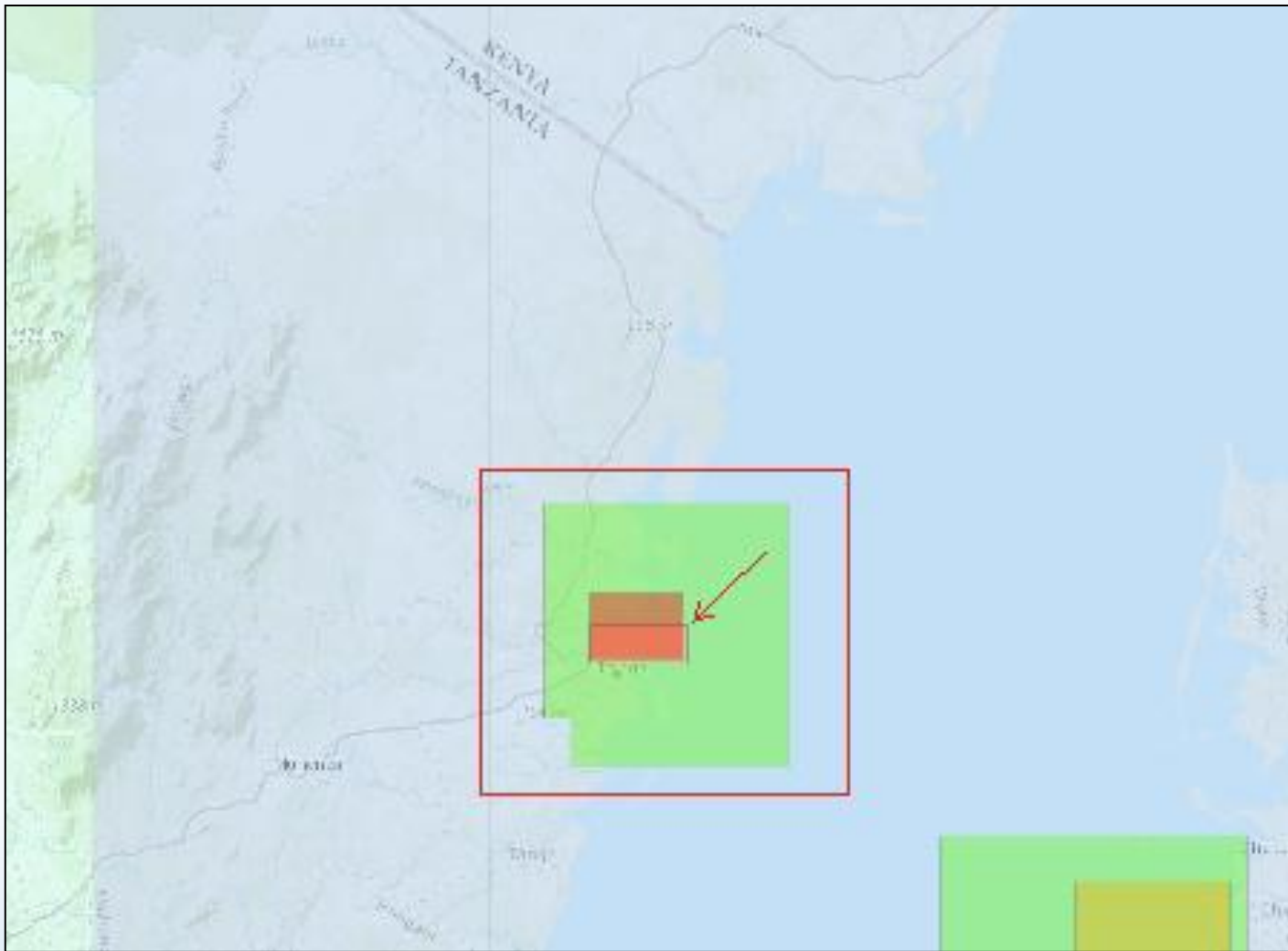


ENC1: GB40718C

ENC2: IN52555I

Overlap covers Aldabra Island and surrounding coastal waters.

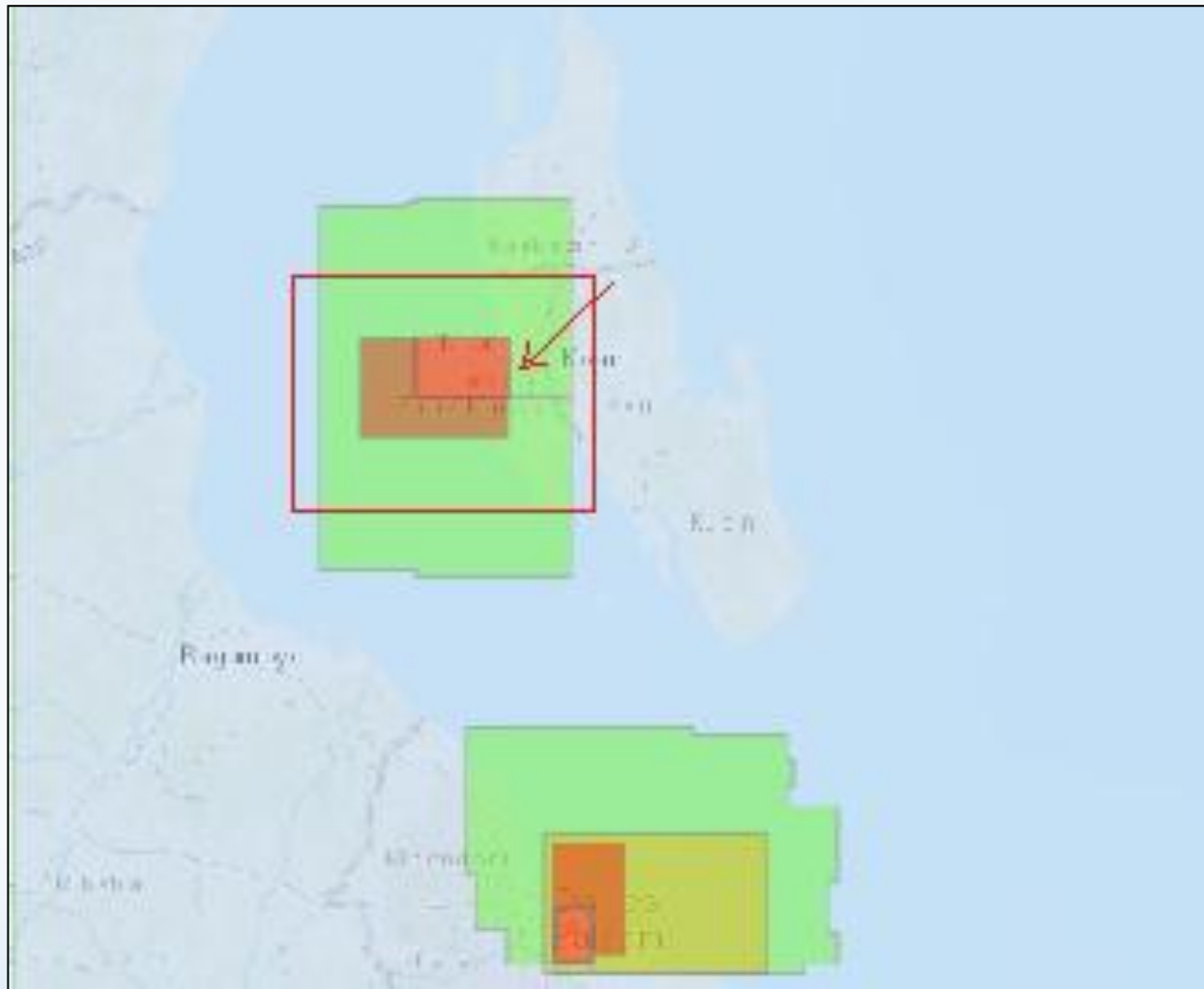
ENC Overlaps within Region H



ENC1: GB50663A
ENC2: IN62693T

Overlap located in the vicinity of Tanga harbour. High level of traffic.

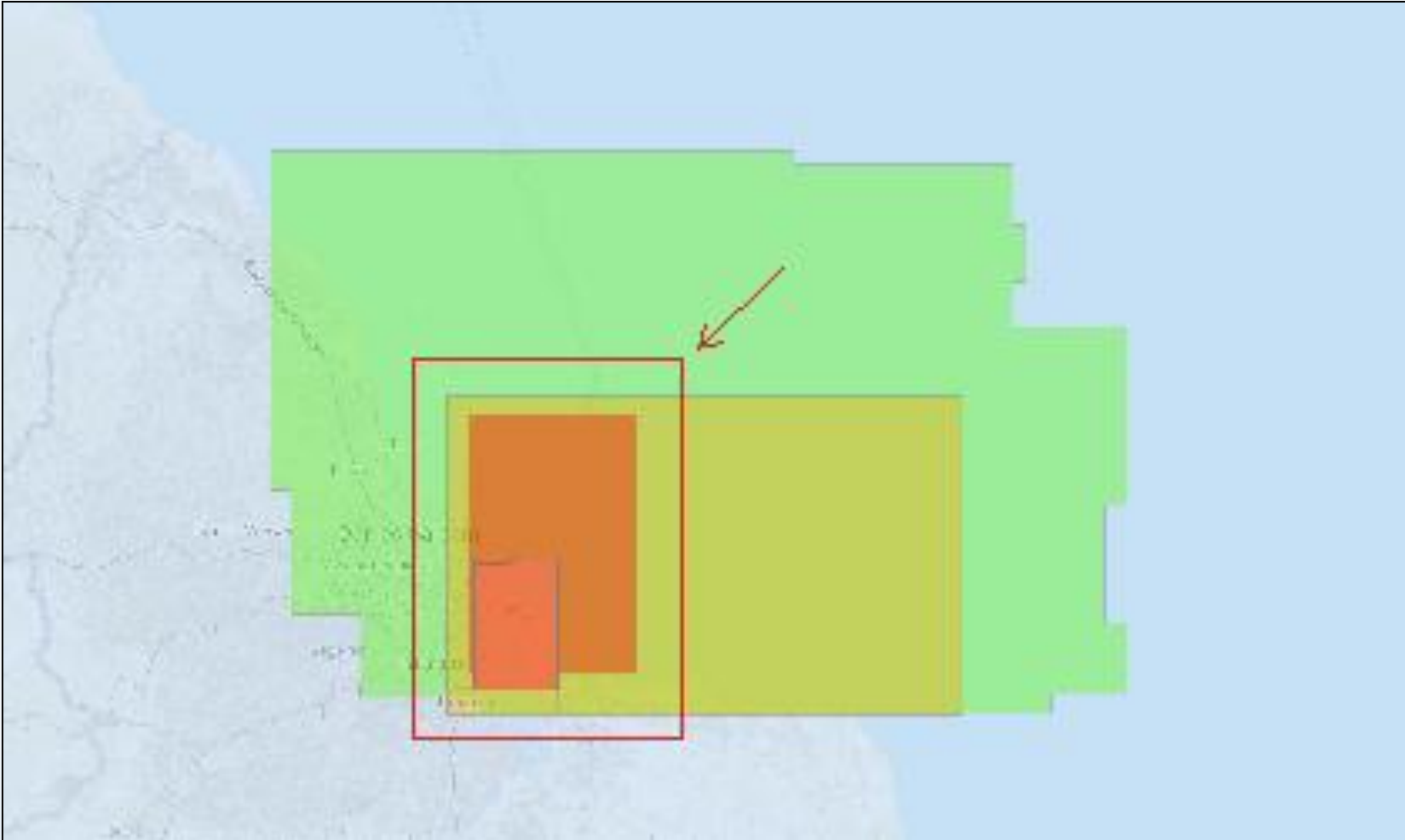
ENC Overlaps within Region H



ENC1: GB54231A
ENC2: IN62524P

Overlap located in the vicinity of Zanzibar City harbour. High level of traffic.

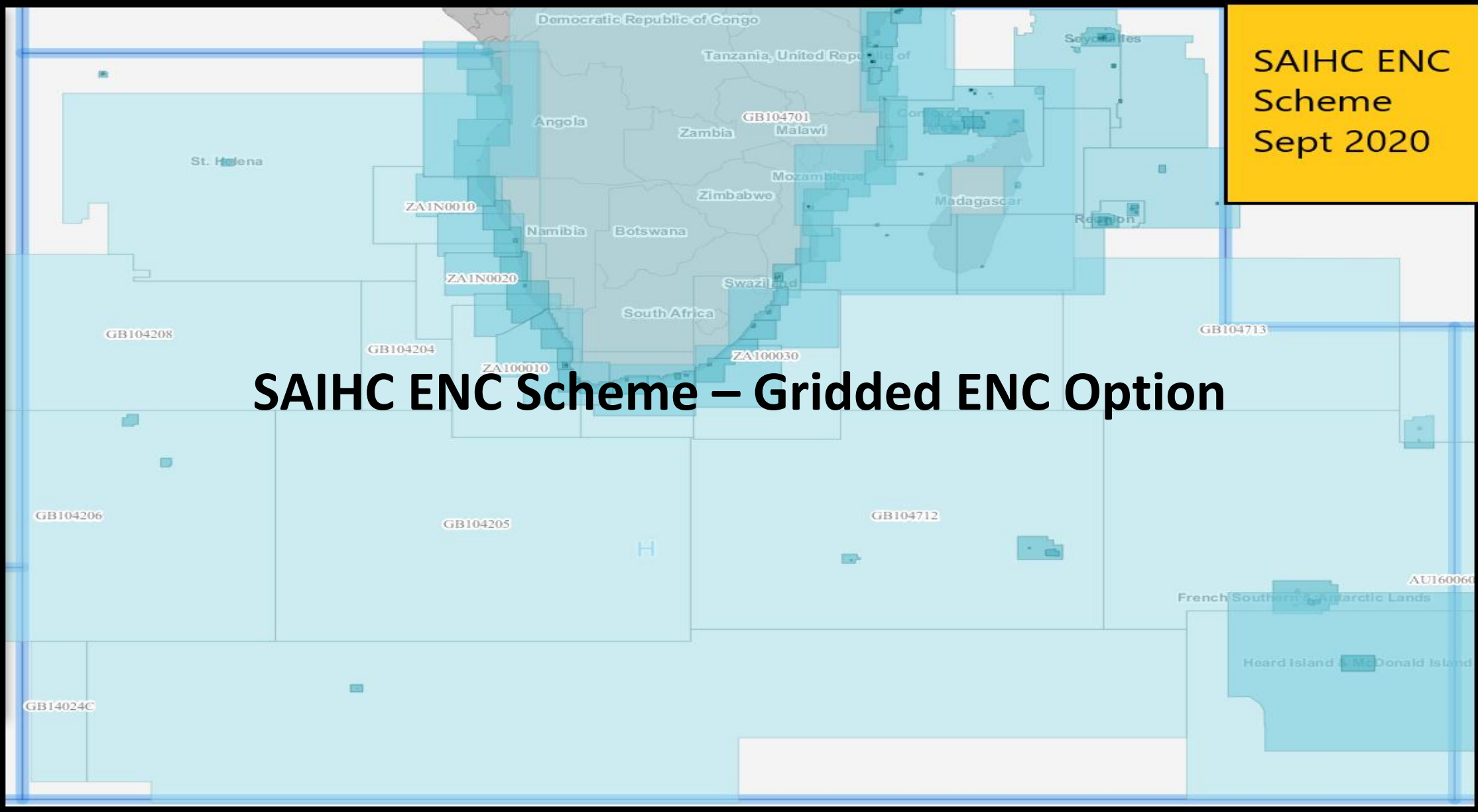
ENC Overlaps within Region H



ENC1: GB54232A
ENC2: IN62517N

Overlap located in the vicinity of Dar Es Salaam harbour. High level of traffic.

SAIHC ENC Scheme
Sept 2020



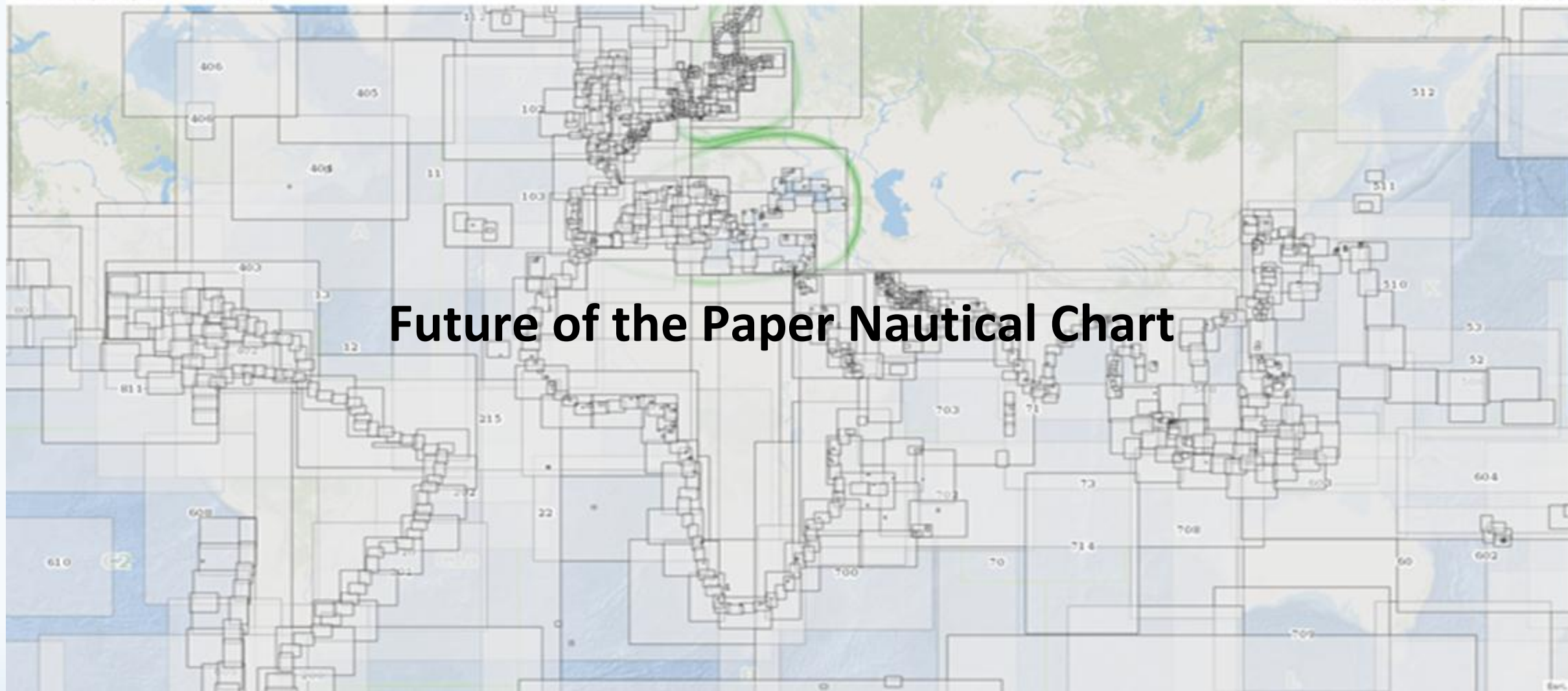
SAIHC ENC Scheme – Gridded ENC Option

SAIHC ENC Scheme – Gridded ENC Option

The UKHO prepared a paper for circulation ahead of the 9th ICCWG meeting which was uploaded to the IHO website to prepare members for comment at the ICCWG meeting in September 2020. The presentation described the existing SAIHC ENC scheme which evolved from paper chart limits and the option of a gridded ENC scheme not based on traditional paper charts. Grid options were discussed at the meeting and an example of an approach chart coverage was shown.

The UK recommended the following:

- SAIHC ICCWG monitors global developments in ENC gridding as IHO members start to investigate further and make advances.
- Consider if SAIHC areas that do not have ENCs at the moment, would benefit from gridded ENCs instead of following paper chart limits.
- Undertake further research to understand how many gridded cells could be required and consider advantages and disadvantages in closer detail.



Future of the Paper Nautical Chart

Future of the Paper Nautical Chart

- At the 9th ICCWG meeting, Mr James Timmins (former NCWG Secretary) from the UKHO, provided an update on progress regarding the 'Future of the Paper Nautical Chart' and the future requirement for INT charts.
- Techniques for reducing maintenance on paper charts by producing limited new editions were also discussed with reference to the UK adopted SAN charts.
- It was mentioned that the UK was taking over responsibility for the English version of INT 1, which was due to be ready by November 2020.

Questions

Thank you for your attention!