

# MSDIWG update ahead of 17<sup>th</sup> Meeting of the Southern African and Islands Hydrographic Commission

Submitted by the United Kingdom of Great Britain and Northern Ireland

# Aims of this session

1. Opening.
2. Approval of agenda.
3. Review of MSDIWG actions from SAIHC16
4. Re-cap of MSDI
5. Overview of regional activity
6. Changes to TOR/ROP to include GEBCO Seabed 2030
7. Training and Capacity building to support MSDI at SAIHC
8. Update from IHO MSDI WG activity
9. Summary and key actions from MSDIWG annual report.

# Update since SAIHC 16

---

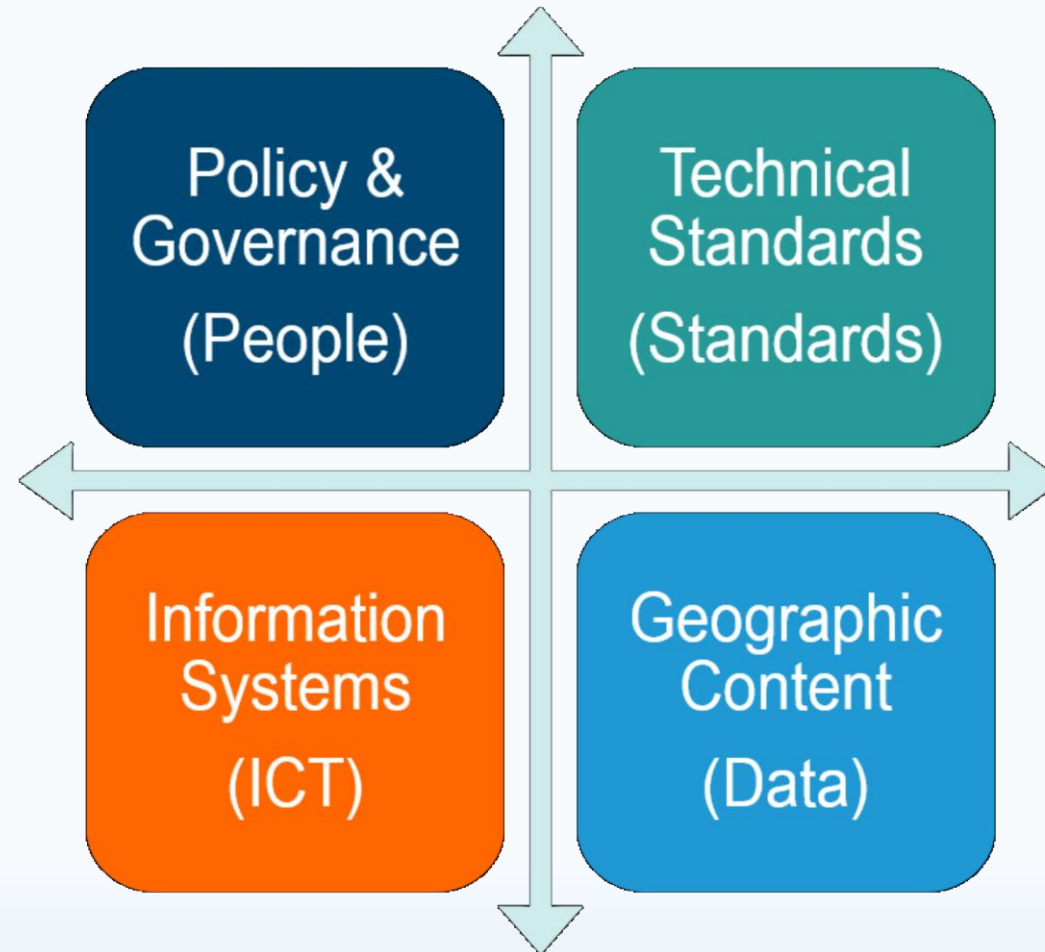
- TOR/ROP reviewed and extended to acknowledge GEBCO Seabed 2030
- Initial research into related activity in region
- Questionnaire on MSDI sent to MS
- Liaison with IHO MSDIWG Chair
- Training
- Annual report delivered to SAIHC delegates

# Review of MSDI actions

Agenda Item	Action	Action By	Deadline	Status
SAIHC16- 7.1	UK to retrieve SHOM data from portal to include in generation of 100m grid for SAIHC region.	UK, SAIHC MSDI working group	31 October 2019	Open
SAIHC16 -7.2	SAIHC MSDIWG to include Seabed 2030 activity and support in ToR.	SAIHC MSDIWG coordinator	During SAIHC16	Closed
SAIHC16 - 13	SAIHC Member States are encouraged to explore the draft MSDI training material available on the SAIHC website and join the SAIHC MSDIWG to progress MSDI within the SAIHC region.	SAIHC Member States	SAIHC17	Closed
SAIHC16 - 13	SAIHC Member States are requested to complete the SAIHC MSDI SAIHC Member questionnaire, if not already completed.	31 October 2019	SAIHC17	Closed

# MSDI re-cap

---



# MSDI re-cap

---



# MSDI re-cap

## Spatial Data Infrastructure

A (National) Spatial Data Infrastructure (NSDI) is described as the technology, policies, standards, and human resources necessary to acquire, process, store, distribute, and improve utilisation of geospatial data.

Fundamentally, an NSDI is a coordinated series of agreements on technology standards, institutional arrangements, and policies that enable the discovery and use of geospatial information by users and for purposes other than those it was created for.

## What is MSDI?

MSDI can be described as the technology, policies, standards, and content necessary to acquire, process, store, distribute, and improve utilisation of geospatial data.

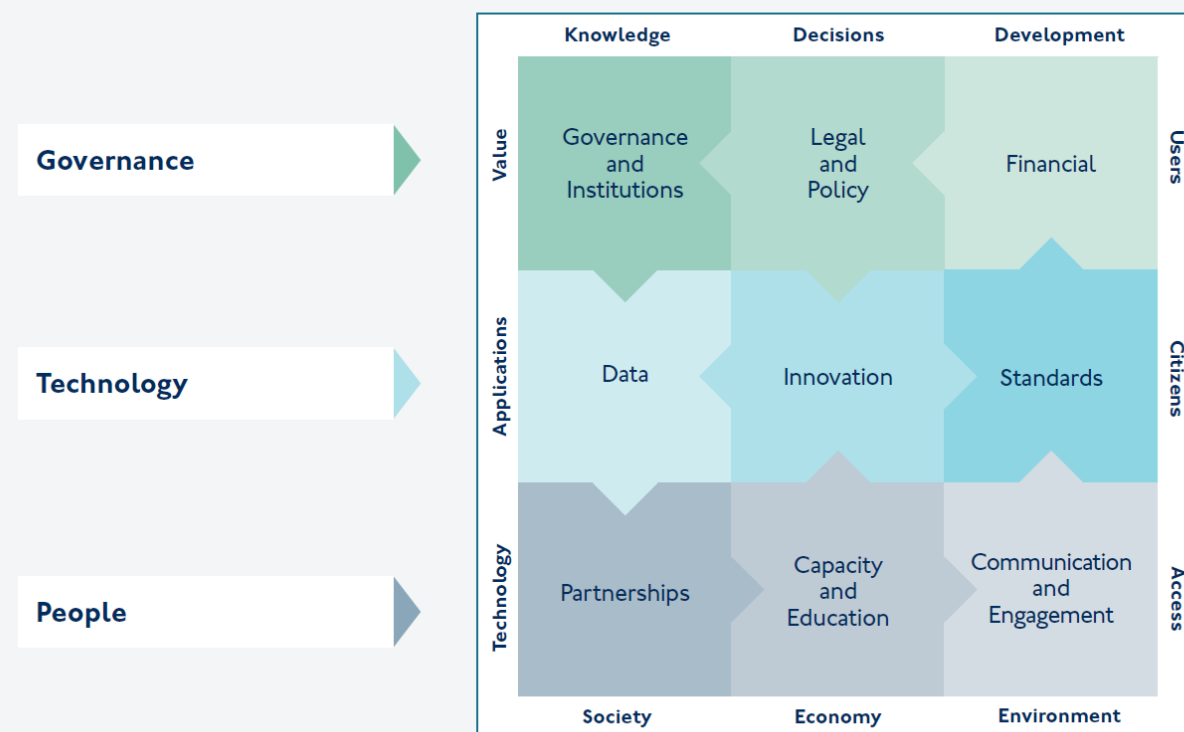


<https://www.youtube.com/watch?v=5m15KBhd9v0>

## Implementing principles of MSDI

UKHO is adopting the [UN-GGIM 9 Strategic Pathways of an MSDI – Integrated Geospatial Information Framework \(IGIF\)](#)

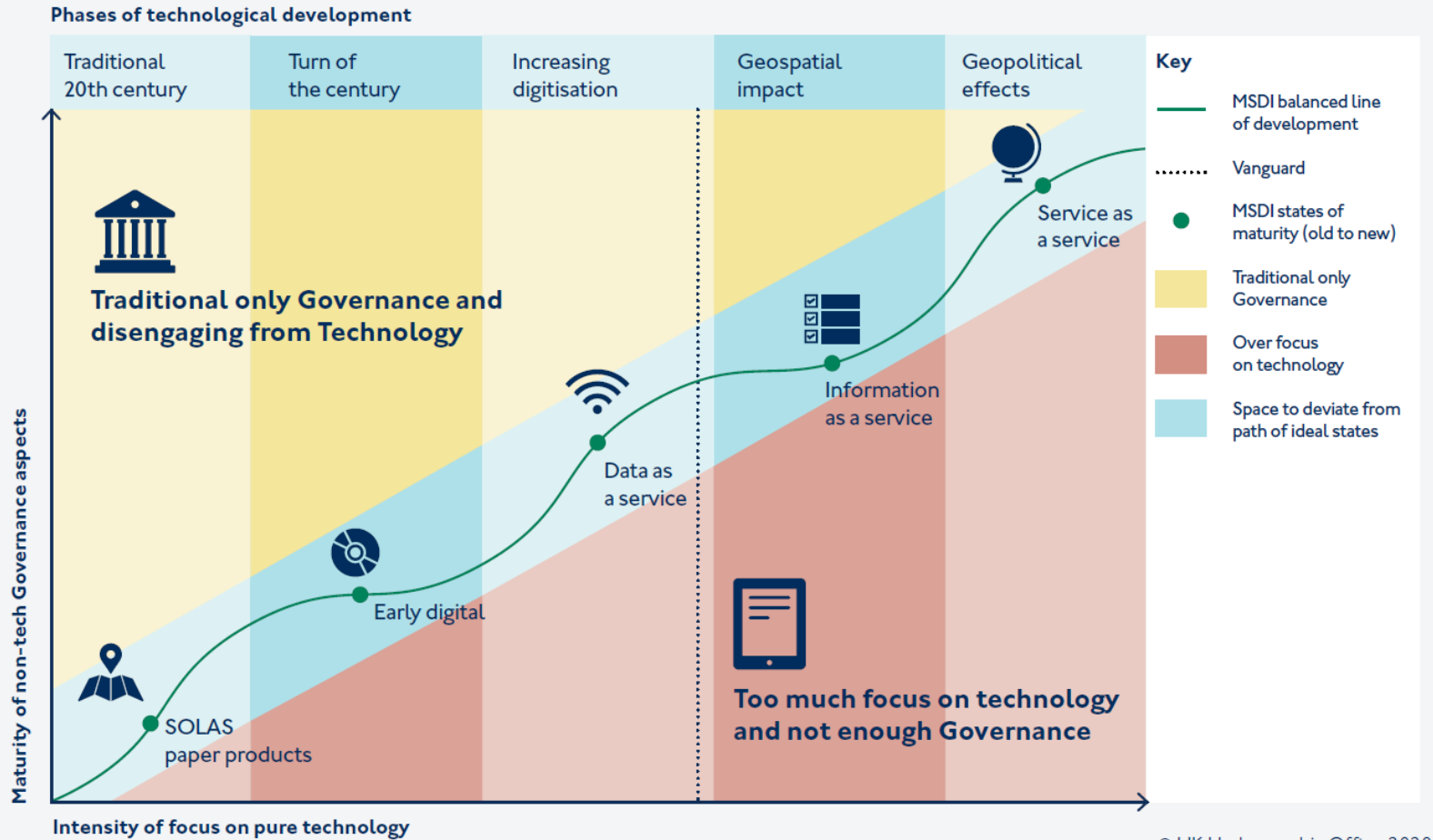
### The UN-GGIM IGIF Nine Pathways model



© UK Hydrographic Office 2020

# MSDI re-cap

## MSDI is a Pathway, Maturity is a State





# Known related activity in region

---

- The Seychelles Marine Spatial Plan (MSP) Initiative <https://seymsp.com/the-initiative/>
- Marine Spatial Atlas for the Western Indian Ocean (MASPAWIO) <http://maspawio.net/>
- African Coastal and Marine Atlas (ICAN) <http://www.africanmarineatlas.org/>
- BIOPAMA
- Nairobi Convention – Marine Spatial Planning Group [https://wedocs.unep.org/bitstream/handle/20.500.11822/26353/Marine\\_Spatial\\_Planning\\_Report.pdf?sequence=1&isAllowed=y](https://wedocs.unep.org/bitstream/handle/20.500.11822/26353/Marine_Spatial_Planning_Report.pdf?sequence=1&isAllowed=y)

# Update on related activity in region

---

- Recent update from France:
    - \* the project OCEAN METISS (<https://www.oceanmetiss.re/>), supported by the European Union, MSP initiatives
    - \* A survey and inventory, similar to the one conducted by the MACHC, could be conducted at the SAIHC level : <https://www.iho-machc.org/mmsdiwg.html>
- The information France has already provided could be reused, supplemented by other members.

# Further related activity in the region?

---

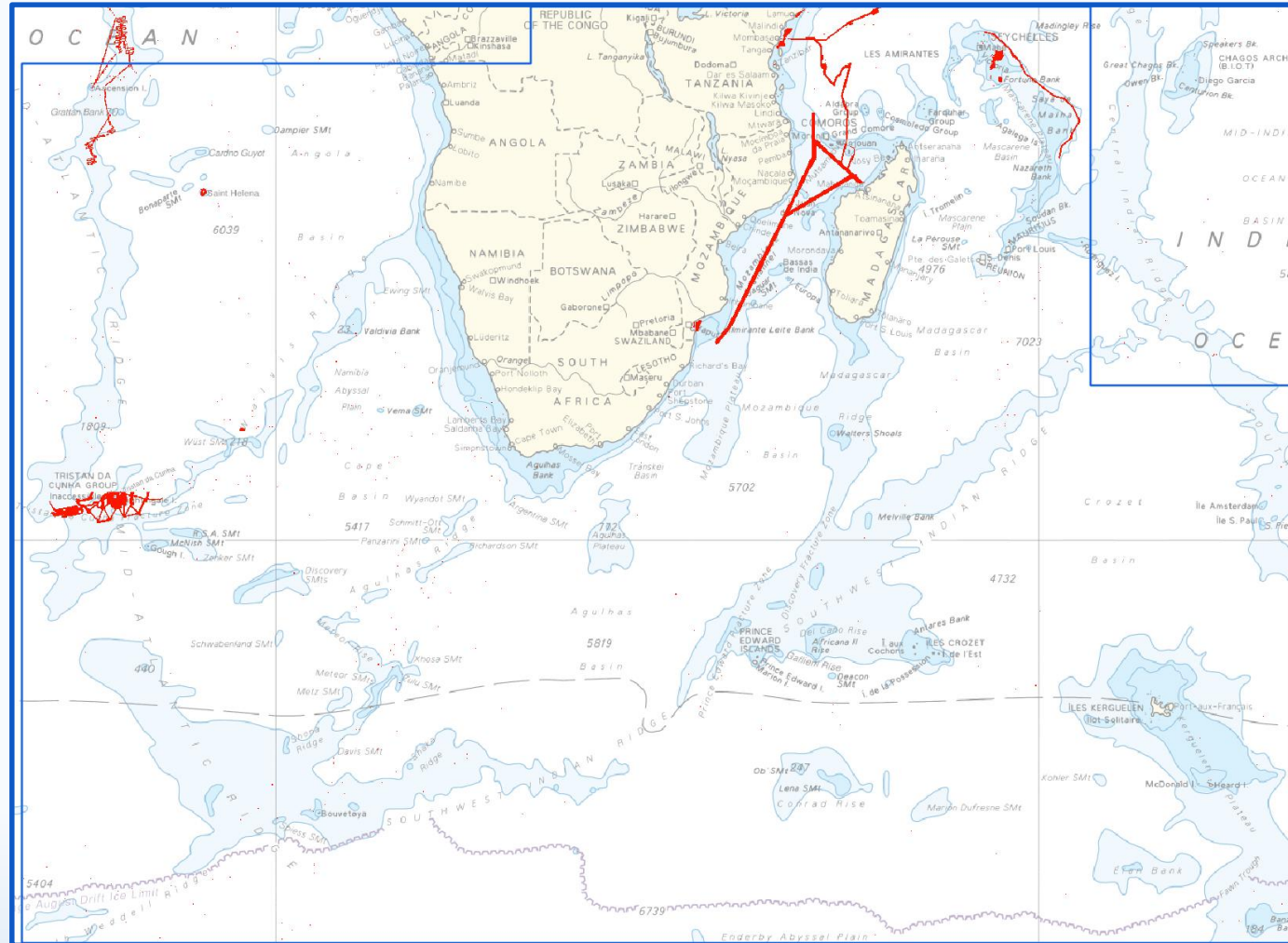
- Are there any other activities to share with the SAIHC group? If so, what have been the:
  - Key challenges
  - Key benefits

# Changes to TORs/ROP

---

- Revised October 2019 to incorporate coordination of Seabed 2030 activity for SAIHC region)
- During the 16<sup>th</sup> Conference, the SAIHC recognised the importance for all Member States to communicate and collaborate in support of Seabed 2030 activity. This activity is coordinated by SAIHC-MSDIWG.
- Consider and coordinate MS activity towards Seabed 2030.

# GEBCO Seabed 2030 support



# Training / Capacity Building

- Draft training material provided by IHO MSDIWG

<https://iho.int/en/saihc16-2019>

- UK sponsored seminar
- Request for Support
- Capacity building opportunities





# IHO MSDIWG

---

- Overview of 11<sup>th</sup> meeting held in Rostock-Warnemunde, Germany 24-26 February 2020



# Key actions of SAIHC MSDIWG annual report

---

- With reference to the MSDIWG Annual report from July 2020, key actions, items of note, considerations and provisions are as follows:
  - Actions: SAIHC 17 MSDIWG is invited to:
  - Note this annual MSDI report;
  - Consider and update the WG on any MSDI activity in the SAIHC region,
  - Provide a graphic/snapshot of gird surface, or the surface itself, that supports GEBCO Seabed 2030 coverage within SAIHC region



# Questions/feedback

---

- Questions.