

MSDIWG update 18th Meeting of the Southern African and Islands Hydrographic Commission

Submitted by the United Kingdom of Great Britain and Northern Ireland

Update since SAIHC17 – February 2021

- Annual report delivered to SAIHC delegates (April 2022)
- Amended ToR to reflect change in CSB/Seabed 2030 Coordinator role
- African Great Lakes & Rivers Sub-Working Group support

Key actions of SAIHC MSDIWG annual report

- With reference to the MSDIWG Annual report from April 2022, key actions, items of note, considerations and provisions are as follows:
 - a. Note the annual MSDI report,
 - b. Consider and update the WG on any MSDI activity in the SAIHC region,
 - c. Endorse minor amendments to TORs at Annex A,
 - d. Provide requirements for data portal through the African Great Lakes & Rivers Sub-Working Group.

Update on IGIF-MSDI Maturity Roadmap

- The following slides provide a summary of how UKHO is currently developing its IGIF-MSDI Maturity Framework in conjunction with international collaboration.



UK Hydrographic
Office



Open
Geospatial
Consortium

IGIF-MSDI Maturity Roadmap

“Quick-Start Guide for undertaking an IGIF-aligned MSDI”

EUR ING **Dr Gerald J Wong** MPhys MBA EngD MIET MInstP CEng CPhys

Data Strategy and Information Governance Lead



MSDI Four Pillars: IHO C-17 (2009)



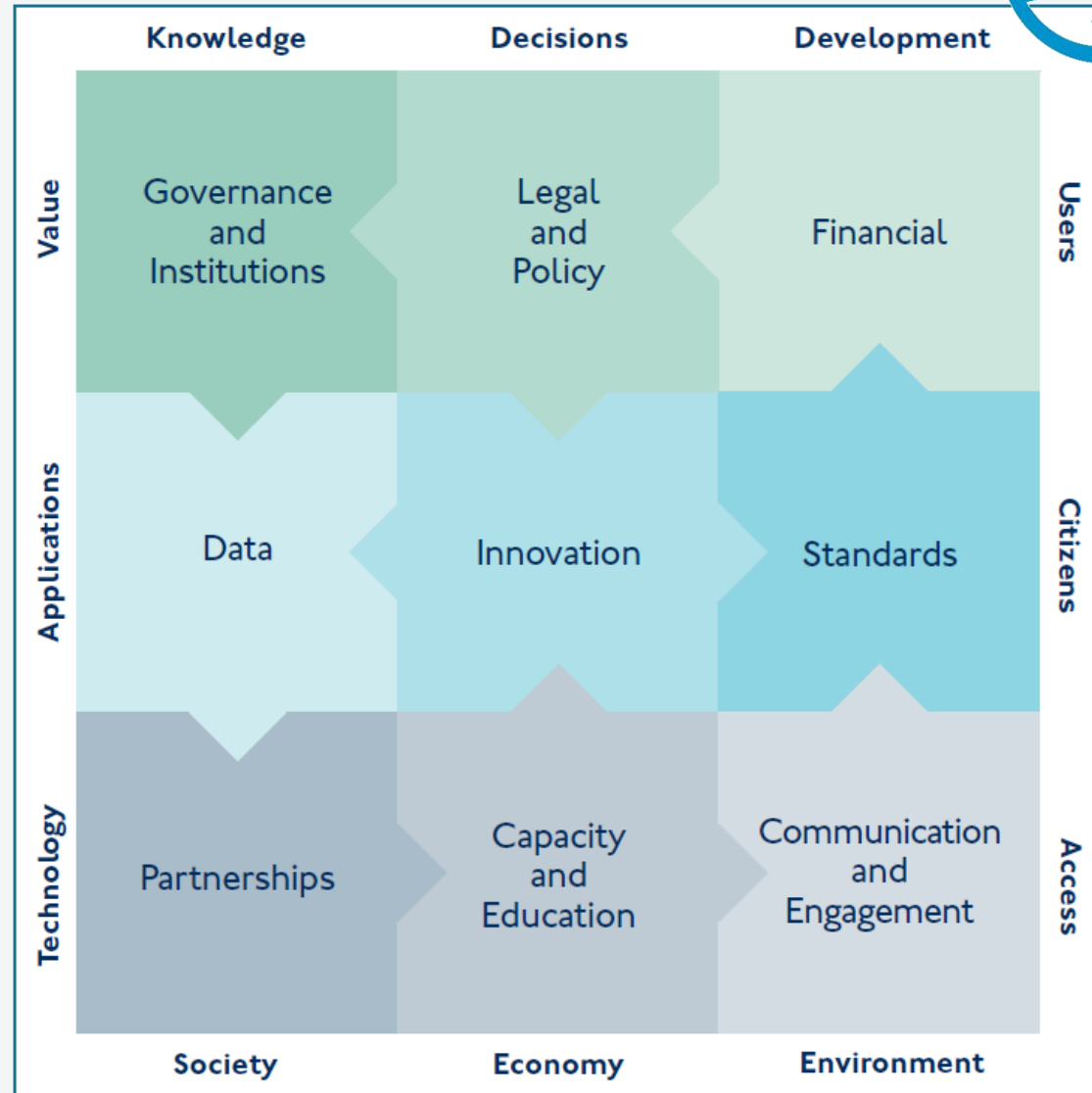
The UN-GGIM IGIF Nine Pathways model

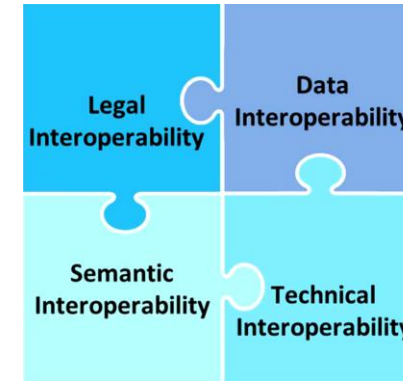
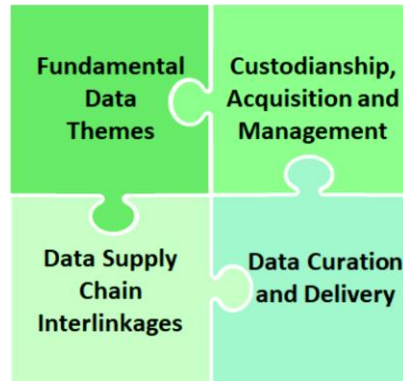
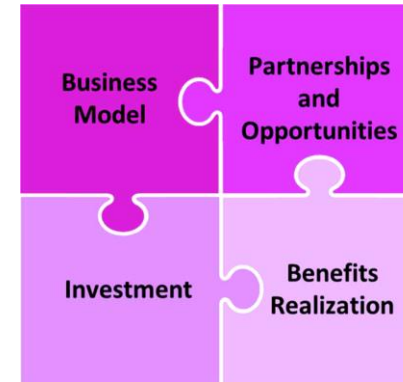
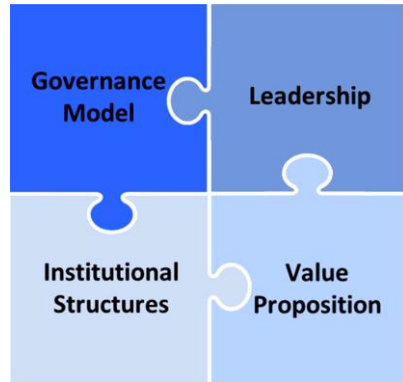


Governance →

Technology →

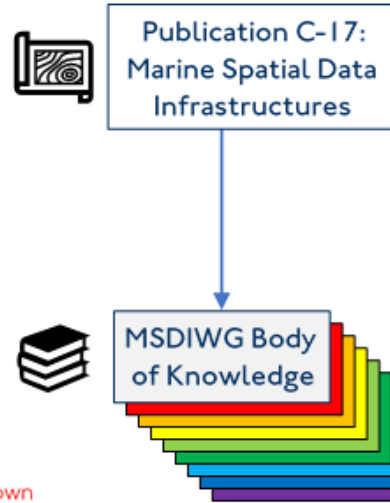
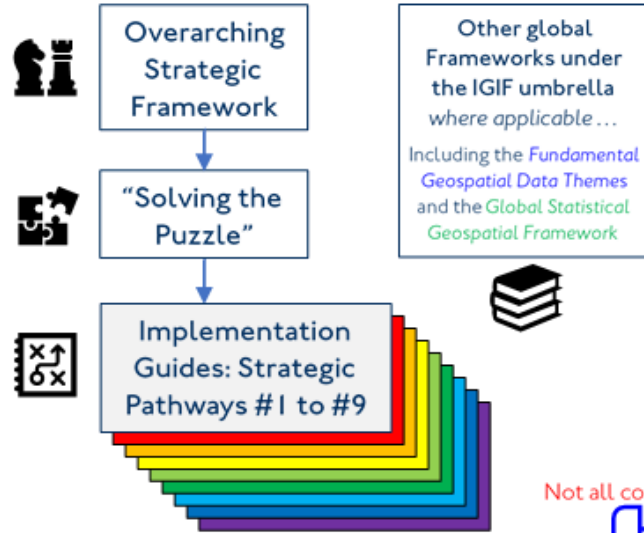
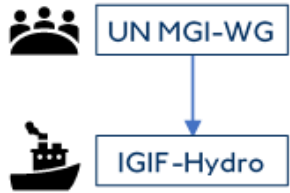
People →







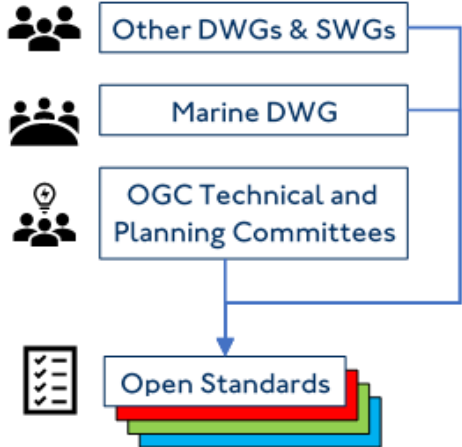
381 Pages of IGIF Resources



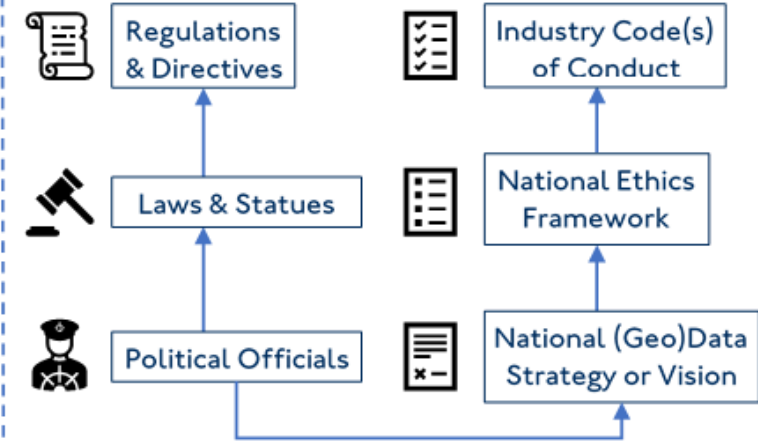
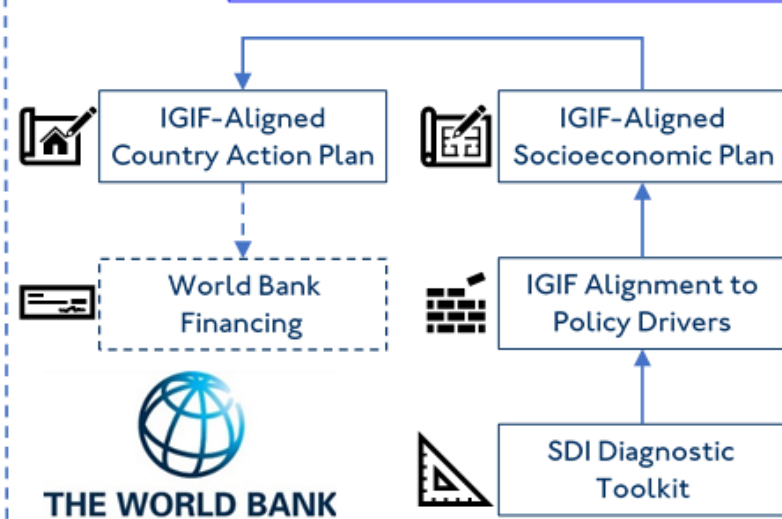
Over 400 Pages of MSDI Resources



Not all connections are shown



IGIF-MSDI Maturity Roadmap



Examples only

Government and National Agencies

* Where this is applicable



The Context of UN-GGIM, IHO and the OGC

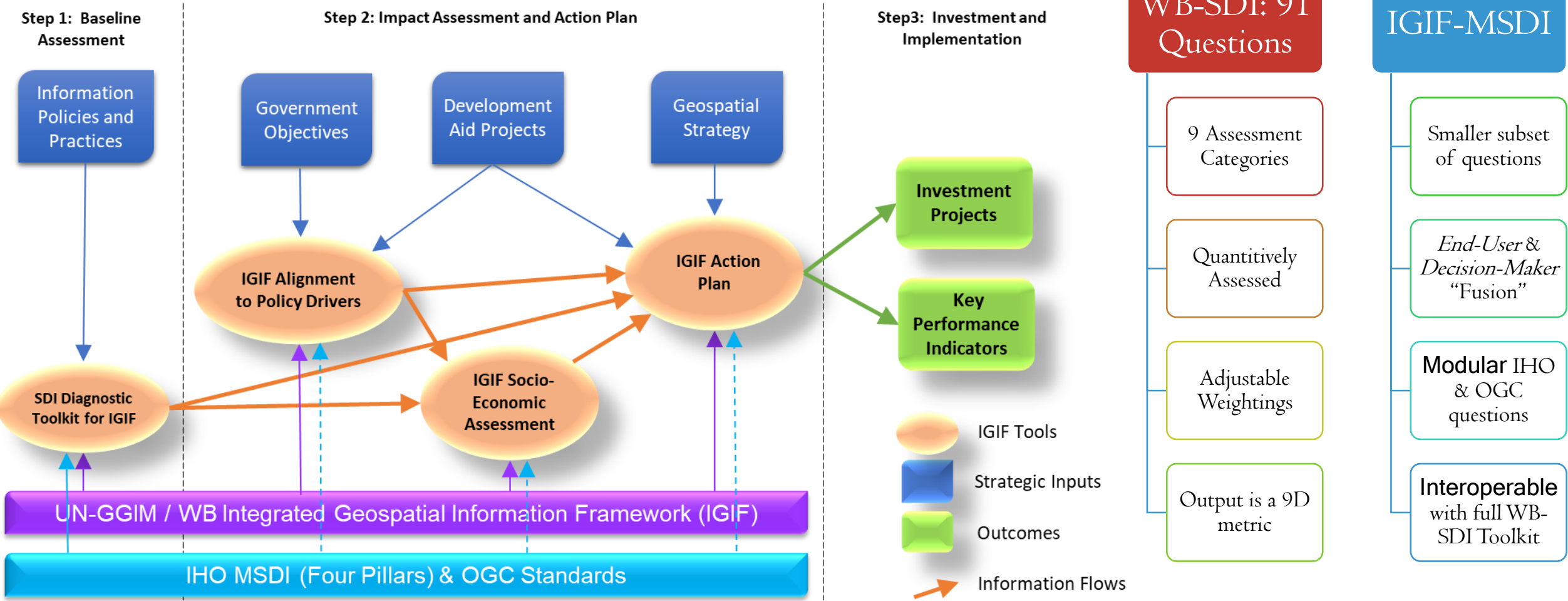


Foundation Elements: Financing & National Ecosystem



© UK Hydrographic Office 2021

World Bank IGIF Methodology (with IHO/OGC Contribution)



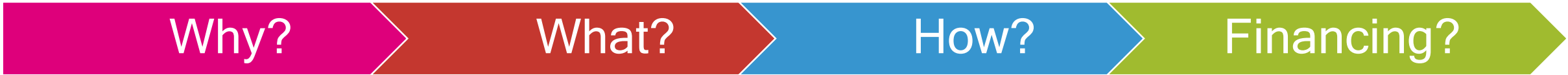


WHY?
Socioeconomic motivations and inclusive benefits from global geospatial information management

WHAT?
Developing a spatial data infrastructure suited for unlocking the value in marine and maritime data

HOW?
Implementing OGC Standards to maximise the capabilities of Tech via cost benefits of interoperability

FINANCING?
Defining and measuring socioeconomic benefits to justify and/or monitor the use of financial resources



STRATEGICALLY ITERATE
Fixed review period (5 or 10-year), linked to Political cycle(s), or external triggers (geopolitical, technological or



IGIF "Proper"
All-Domain Geospatial
(Air, Land, Sea, & Space)

World Bank SDI
Standardized assessment toolkit
Closely-aligned with IGIF *Proper*

IGIF-Hydro
Operational "lens" for IGIF *Proper* with
Marine-specific considerations

 **IHO** International Hydrographic Organization
MSDI Four Pillars
(Incl. MSDI Body of Knowledge)
IHO expertise in Marine SDI

 **Open Geospatial Consortium**
OGC Standards
Best practices for Technology
Domain-agnostic interoperability

IGIF-MSDI
Maturity Roadmap, acting as a "Quick Start" or "Stepping Stone"

Strategic Guidance

Overarching Vision

Putting the "M" into (M)SDI

Quantitative SDI Methodology

Making IGIF operational for the Marine domain

"Making it Real" with Technology

Open Geospatial Consortium

IGIF-MSDI Maturity Roadmap



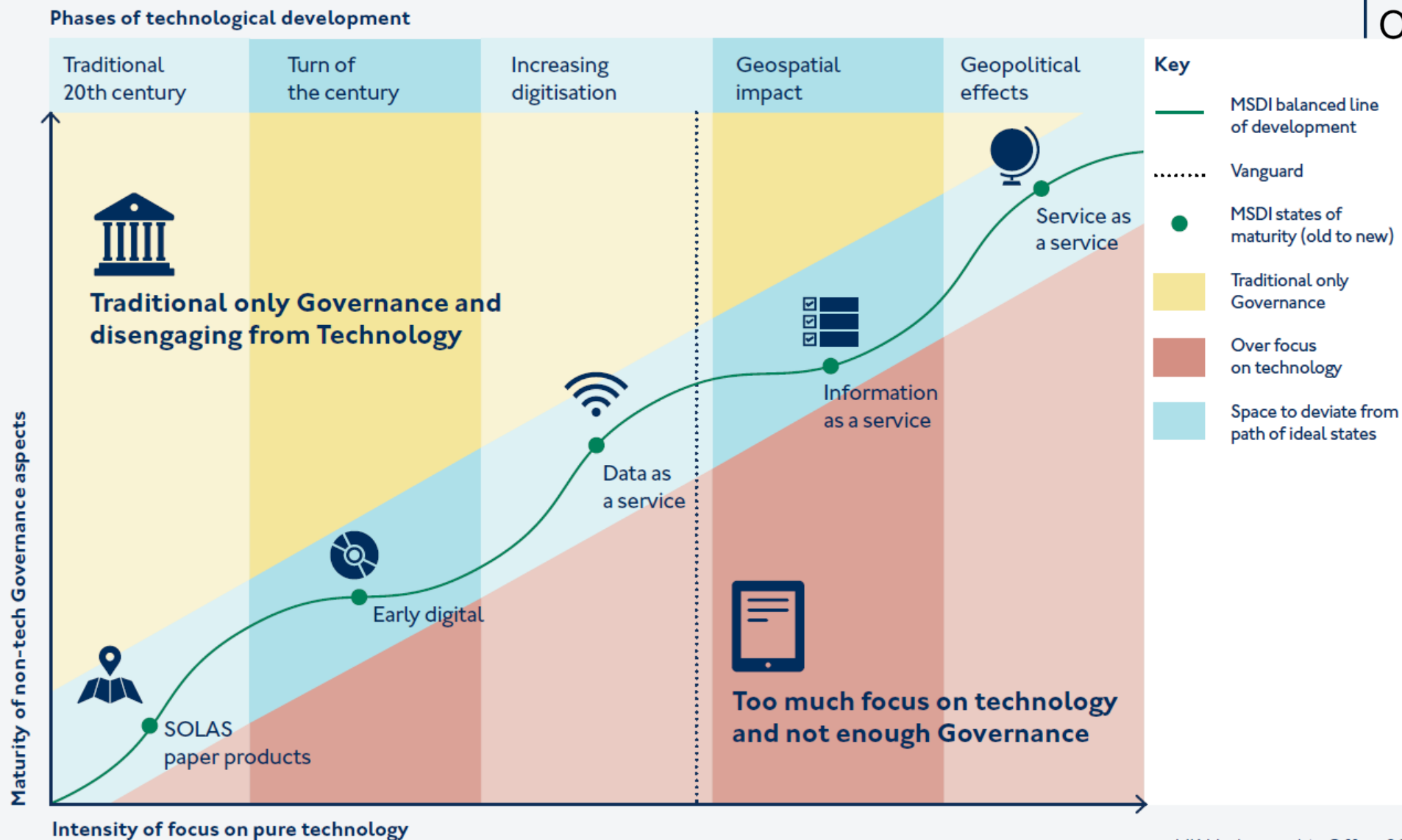
UK Hydrographic
Office



© UK Hydrographic Office 2021



MSDI is a Pathway, Maturity is a State





Who?		For Hydrographic Offices (or national equivalents)	
Why?		Intra and cross-agency engagement is key to success	
What?		Alignment of an MSDI implementation with the IGIF	
When?		Pre-implementation to early and middle stages	
Where?		As a stepping-stone to the full IGIF-MSDI ecosystem	
How?		Early alignment will reduce future costs of divergence	

Authors, Contributors and Facilitators



Dr Gerald J Wong

Co-Chair of OGC Marine
DWG & OGC Planning
Committee Delegate

United Kingdom
Hydrographic Office



Kathrine Kelm

Senior Land
Administration Specialist
The World Bank Group



Jens Peter Hartmann

Chair of IHO MSDIWG
Danish Geodata Agency,
Kingdom of Denmark



John Nyberg

Co-Chair of UN WG-MGI
National Oceanic and
Atmospheric
Administration, United
States of America



Pearlyn Peng

Co-Chair of UN WG-MGI
Vice-Chair of IHO MSDIWG
Maritime and Port
Authority, Republic of
Singapore



Chee Hai Teo

UN-GGIM Secretariat,
Department of Economic
and Social Affairs
United Nations



Gregory Scott

UN-GGIM Secretariat,
Department of Economic
and Social Affairs
United Nations



Trevor Taylor

Senior Director, Member
Success & Development
Open Geospatial
Consortium



Andrew Coote

Principal NSDI
Consultant



Leonel Manteigas

Assistant Director,
Coordination & Capacity



SAIHC 18 is invited to:

- Note the updates to this brief.
- Endorse TOR minor changes.
- Provide any further updates to report provided in April 22 to MSDIWG Chair (UK) tim.lewis@ukho.gov.uk
- Provide any feedback to the MSDI IGIF Maturity Roadmap quick start guide to MSDIWG Chair (UK) tim.lewis@ukho.gov.uk