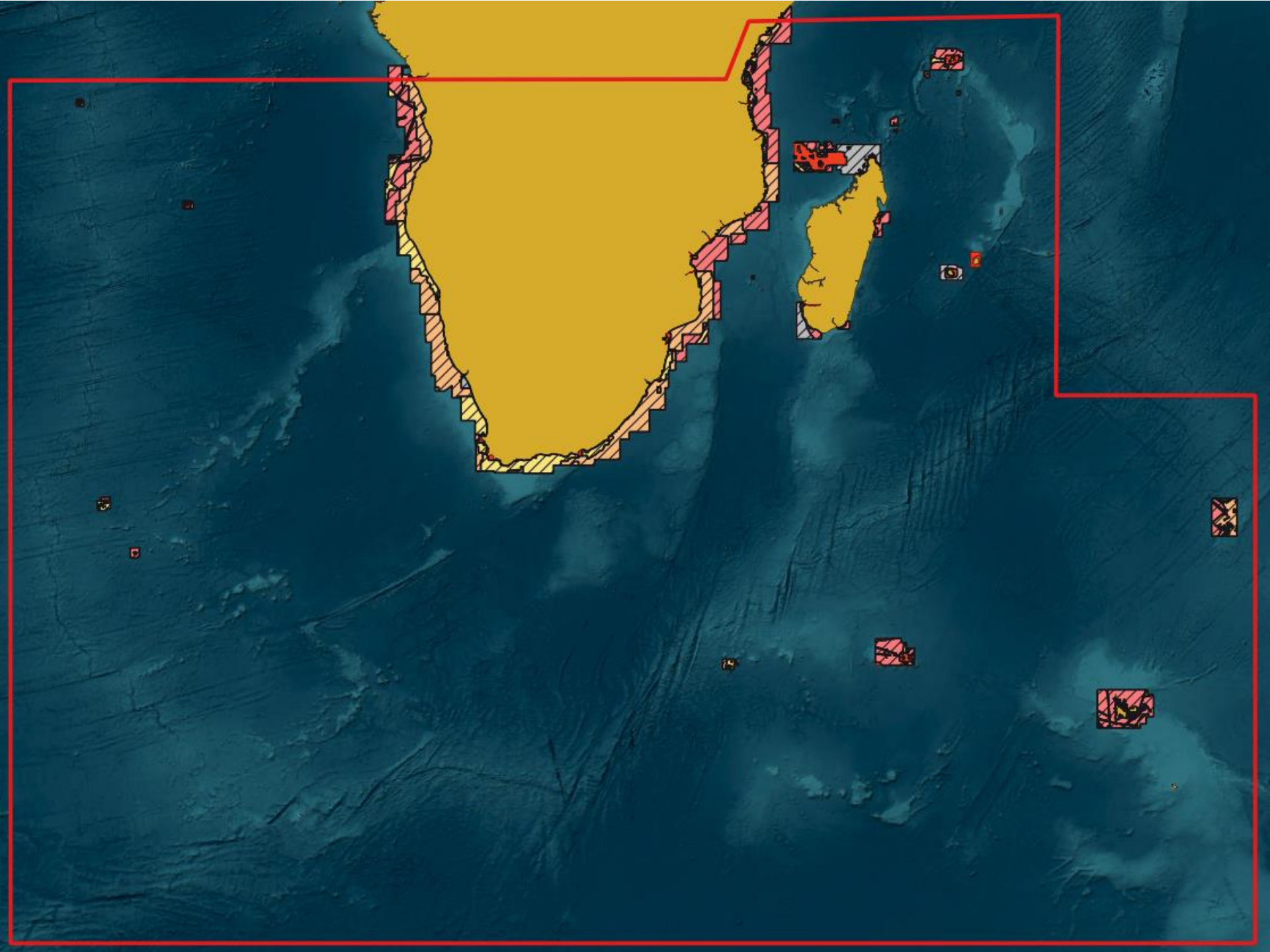


**UB3**  
*(Without UB4 & UB5)*

**Coverage**

- 1-A1
- 2-A2
- 3-B
- 4-C
- 5-D
- 6-U
- N/A

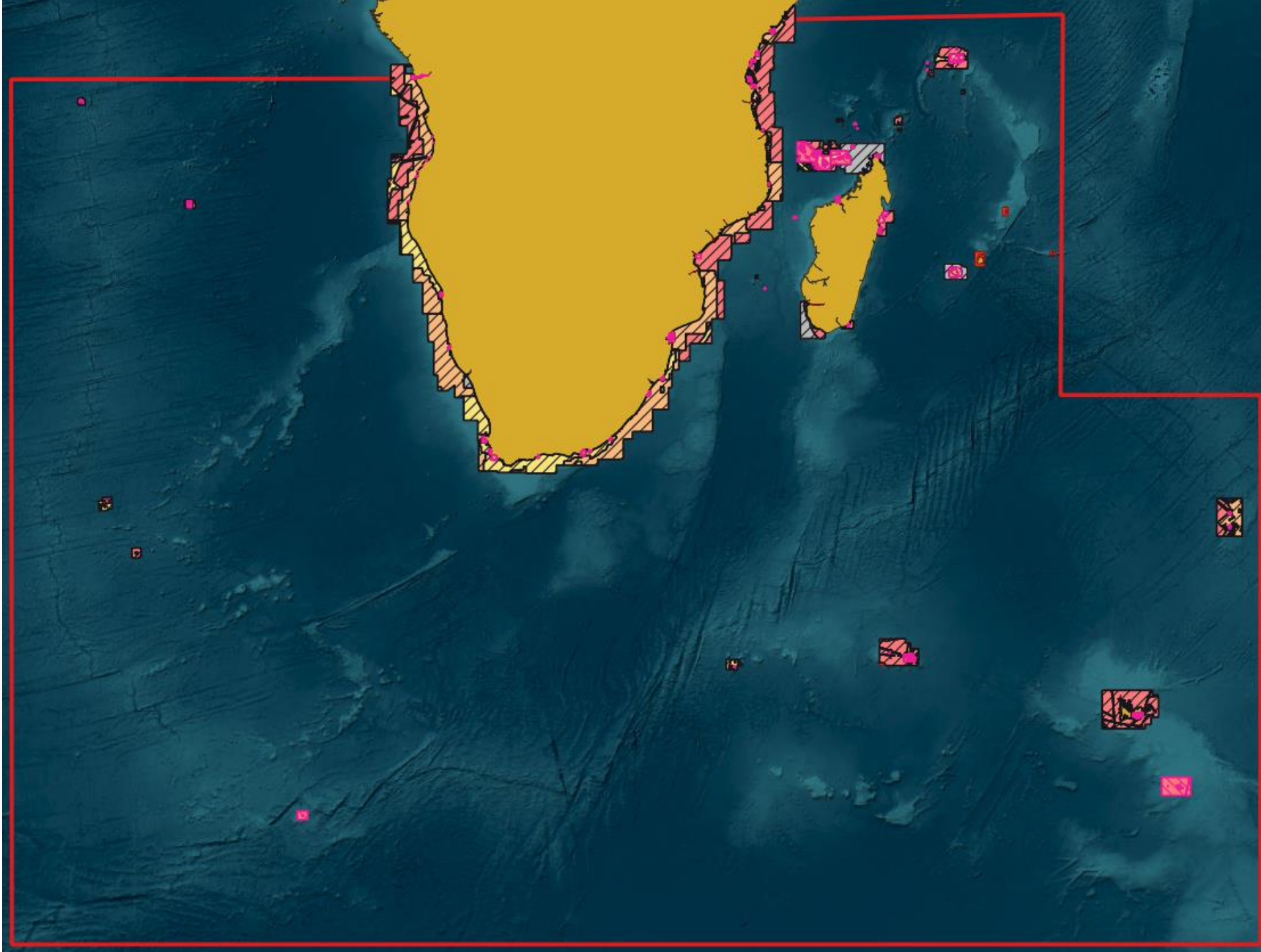


**SPI 1.2.2 Region H**

Sources :  
ICENC & PRIMAR files  
July 2023

**UB3  
+UB4**  
**Coverage**

- 1-A1
- 2-A2
- 3-B
- 4-C
- 5-D
- 6-U
- N/A



**SPI 1.2.2 Region H**

Sources :  
ICENC & PRIMAR files  
July 2023

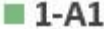


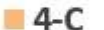





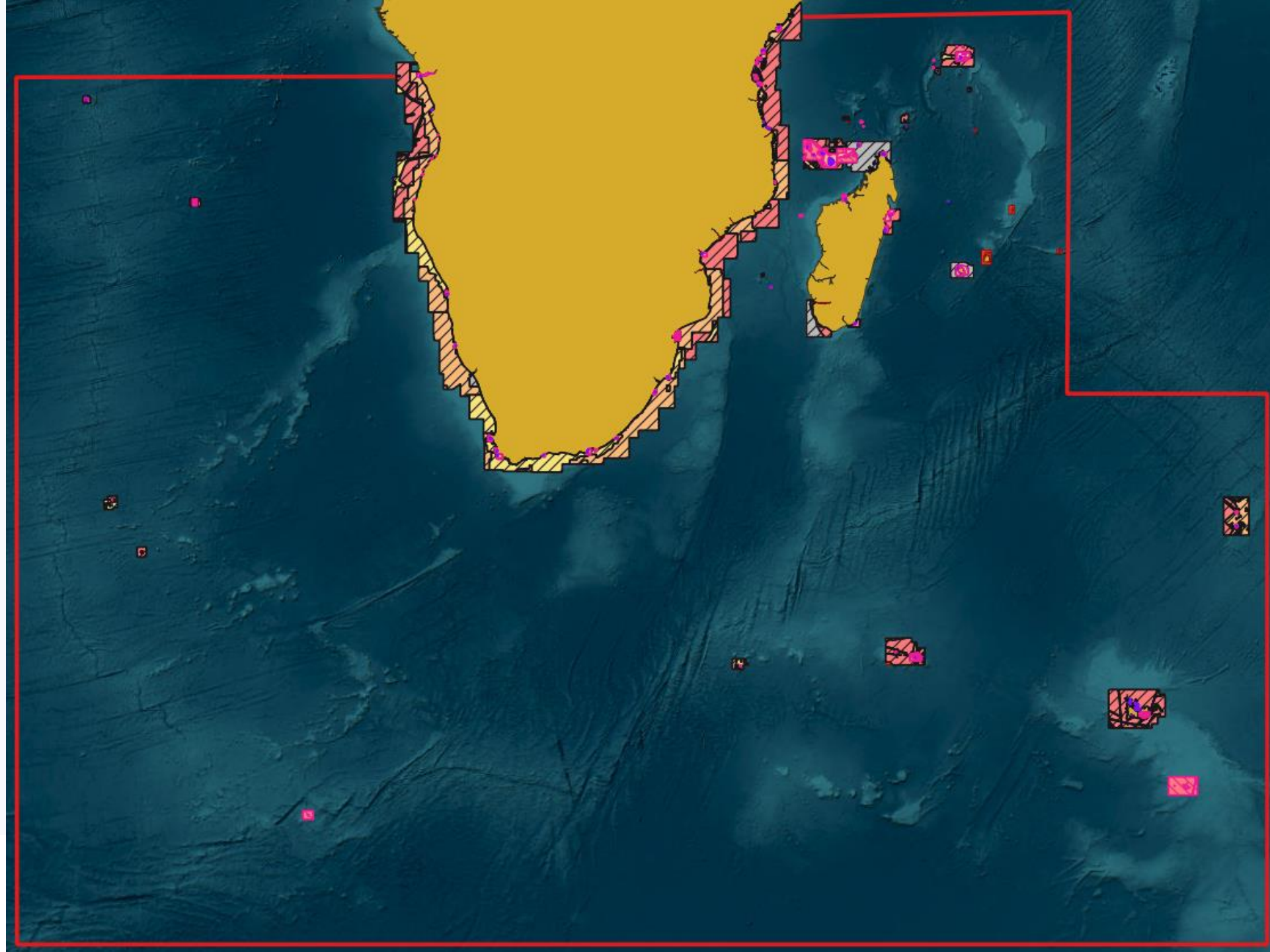
**IHO**

International  
Hydrographic  
Organization

**UB3  
+UB4  
+UB5**

**Coverage**

-  1-A1
-  2-A2
-  3-B
-  4-C
-  5-D
-  6-U
-  N/A



**SPI 1.2.2 Region H**

Sources :  
ICENC & PRIMAR files  
July 2023



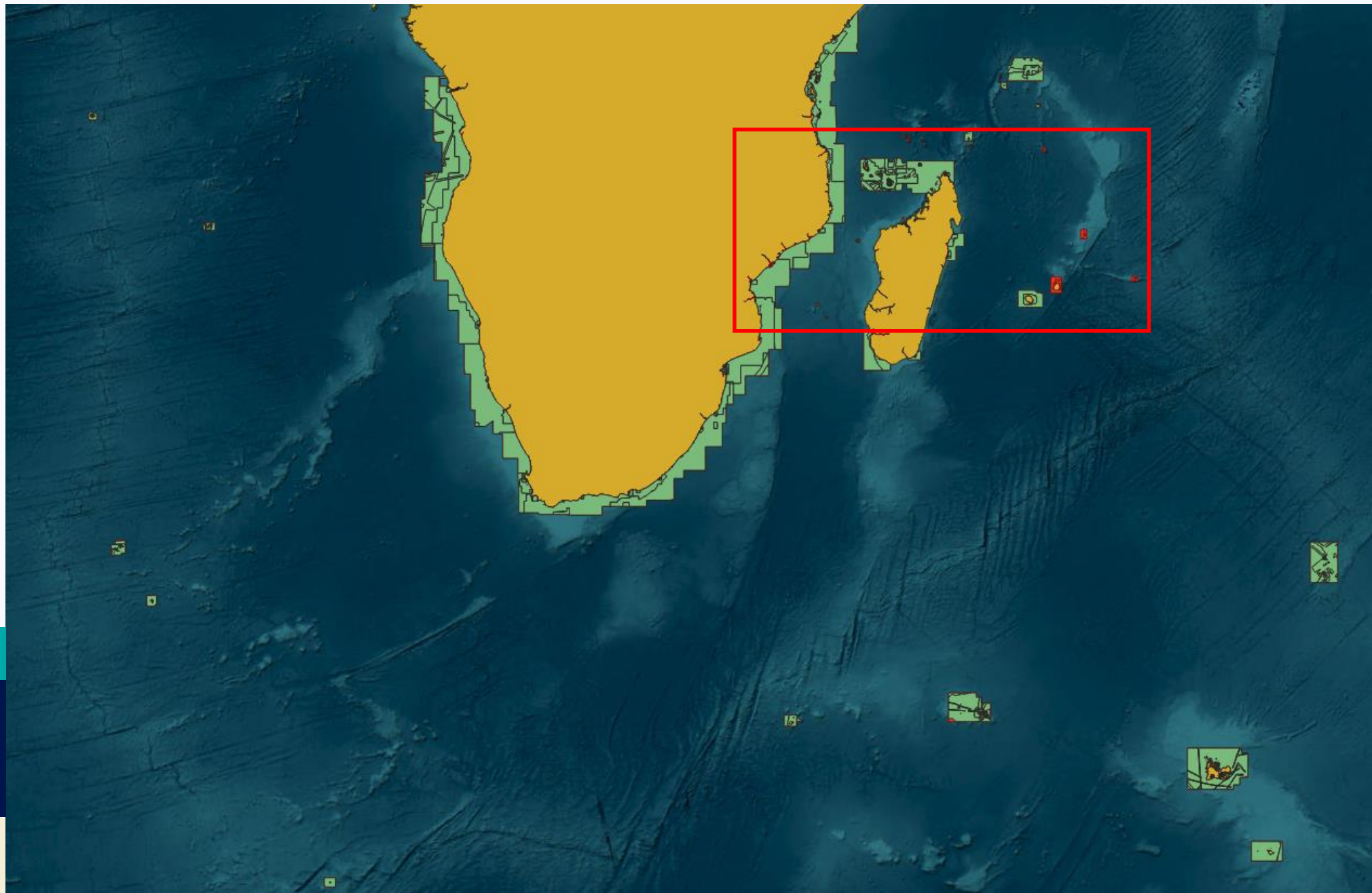
**IHO**

International  
Hydrographic  
Organization

***With CATZOC***



***Without CATZOC***



**SPI 1.2.2 Region H**

**Sources :  
ICENC & PRIMAR files  
July 2023**



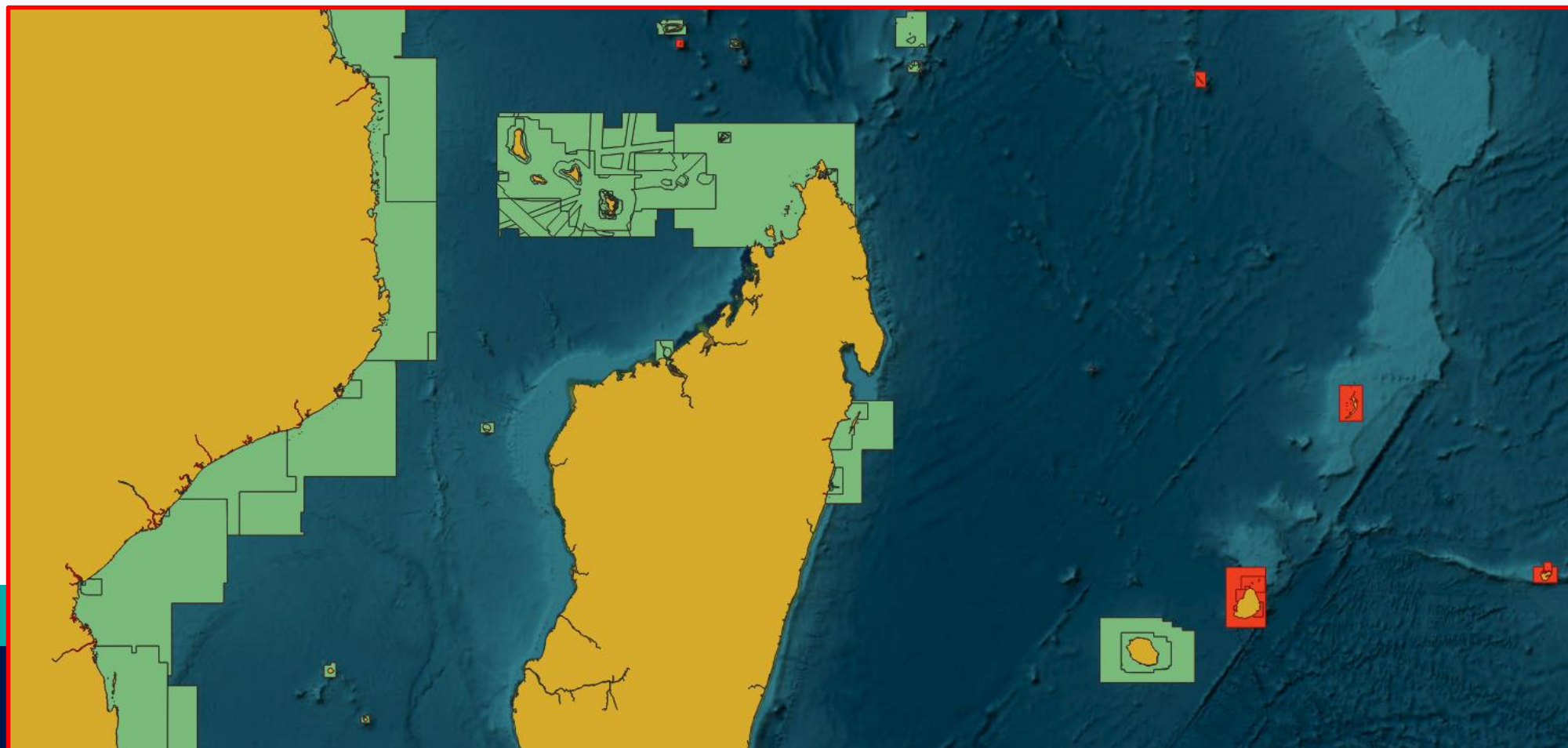
**IHO**

International  
Hydrographic  
Organization

***With CATZOC***



***Without CATZOC***



**SPI 1.2.2 Region H**

**Sources :  
ICENC & PRIMAR files  
July 2023**

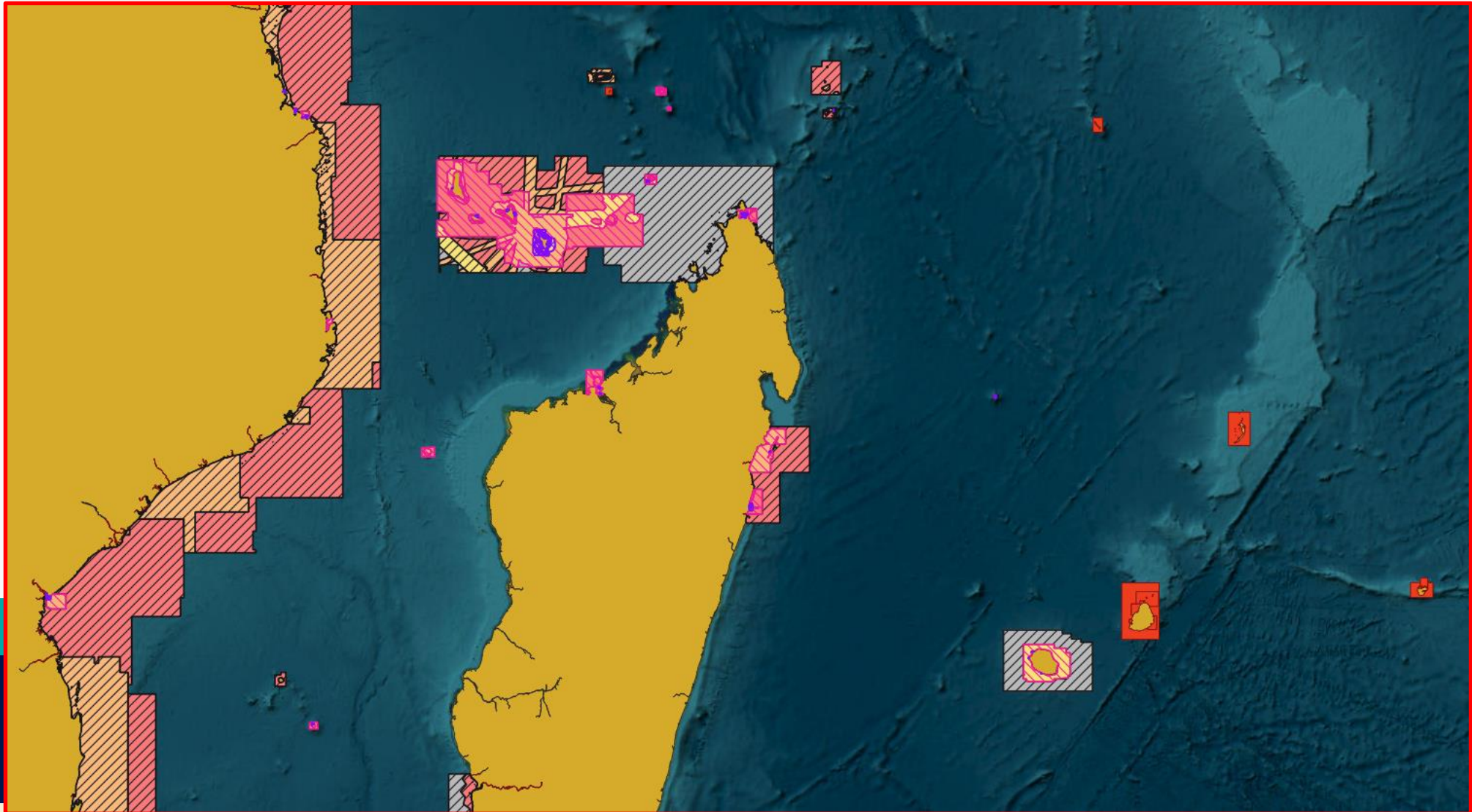
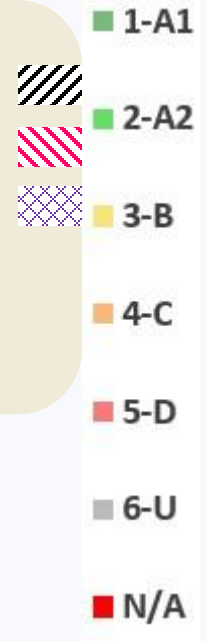


**IHO**

International  
Hydrographic  
Organization

**UB3  
+UB4  
+UB5**

**Coverage**



**SPI 1.2.2 Region H**

Sources :  
ICENC & PRIMAR files  
July 2023



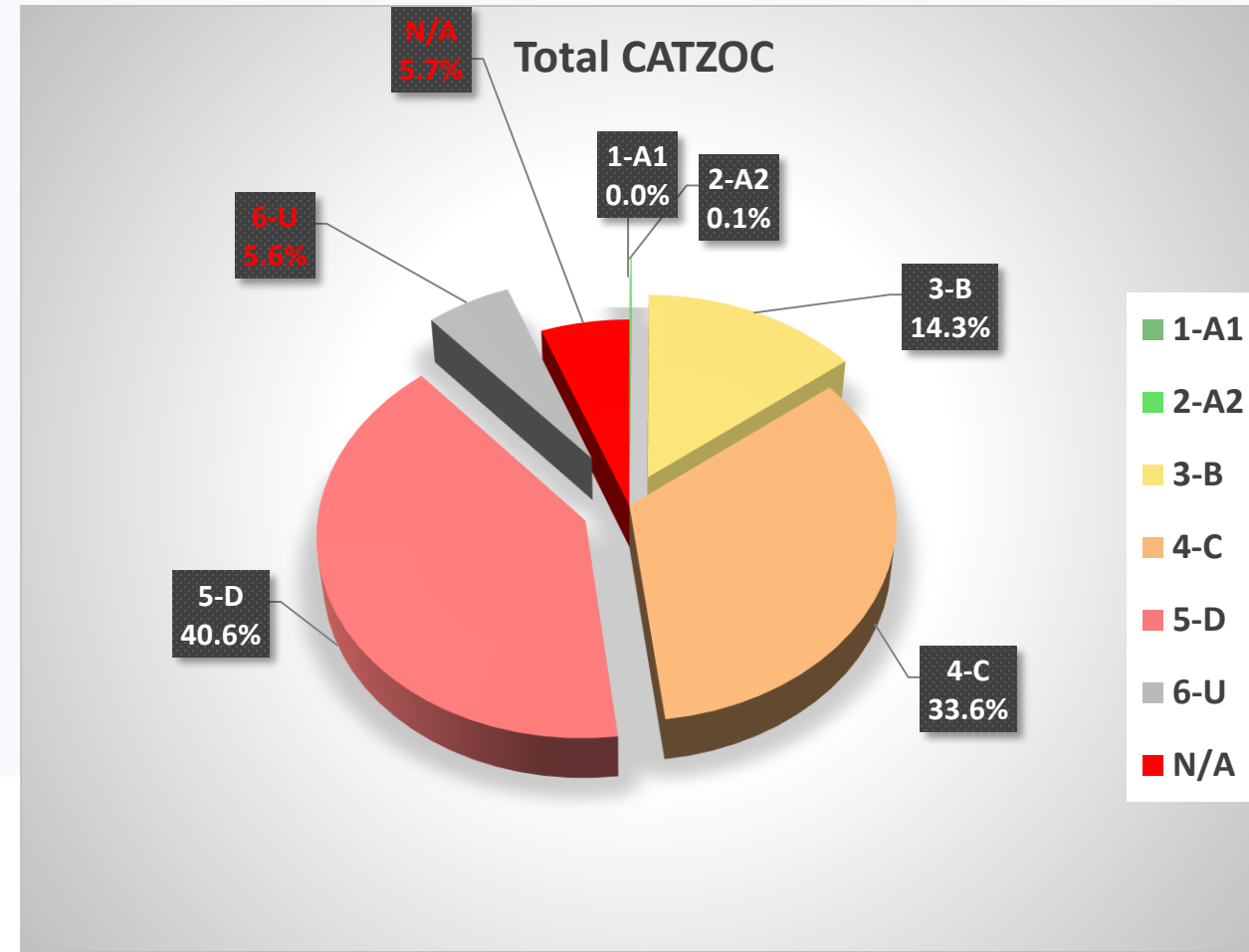
**IHO**

International  
Hydrographic  
Organization

<b>H - SAIHC</b>											
<b>% Surface</b>	<b>UB</b>	<b>CATZOC</b>								<b>UB</b>	
		<b>1-A1</b>	<b>2-A2</b>	<b>3-B</b>	<b>4-C</b>	<b>5-D</b>	<b>6-U</b>	<b>Total</b>	<b>N/A</b>		
<b>CATZOC / ENC</b>	<b>3</b>	0.0%	0.0%	13.9%	34.9%	39.4%	6.0%	94.3%	5.7%	<b>COASTAL</b>	
	<b>4</b>	0.2%	0.9%	18.5%	18.7%	56.9%	0.9%	96.0%	4.0%	<b>APPROACH</b>	
<b>July 2023</b>	<b>5</b>	0.8%	2.1%	22.3%	7.7%	20.2%	1.4%	54.5%	45.5%	<b>HARBOUR</b>	
	<b>Total</b>	<b>0.0%</b>	<b>0.1%</b>	<b>14.3%</b>	<b>33.6%</b>	<b>40.6%</b>	<b>5.6%</b>	<b>94.3%</b>	<b>5.7%</b>		
<b>SPI 1.2.2</b>		<b>88.6%</b>									

**SPI 1.2.2 : Percentage of navigationally significant areas (e.g. charted traffic separation schemes, anchorages and channels) for which the adequacy of the hydrographic knowledge is assessed through the use of appropriate quality indicators.**

**(CL23/2022)**



**SPI 1.2.2 Region H**

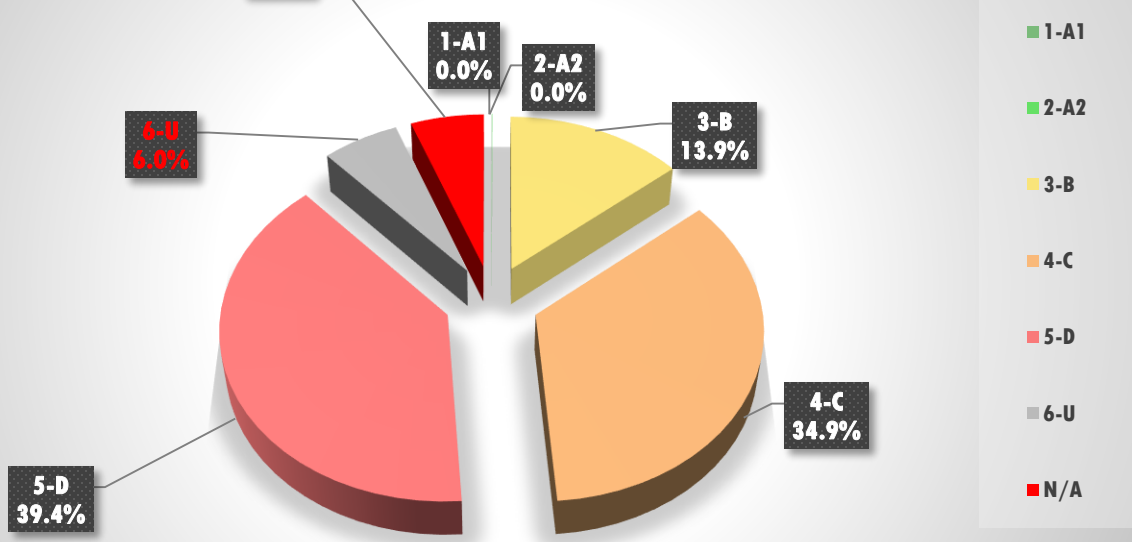
**Sources :  
ICENC & PRIMAR files  
July 2023**



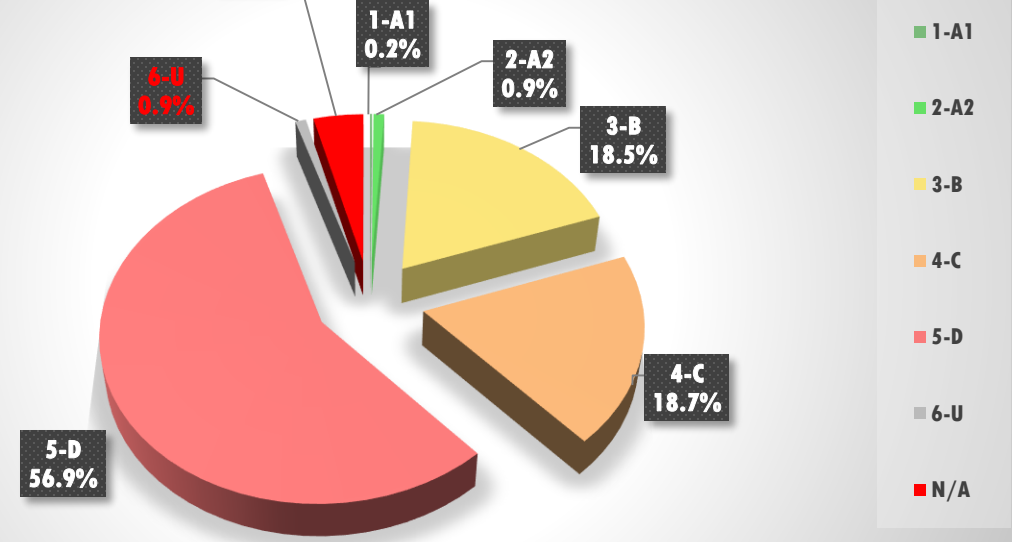
**IHO**

International  
Hydrographic  
Organization

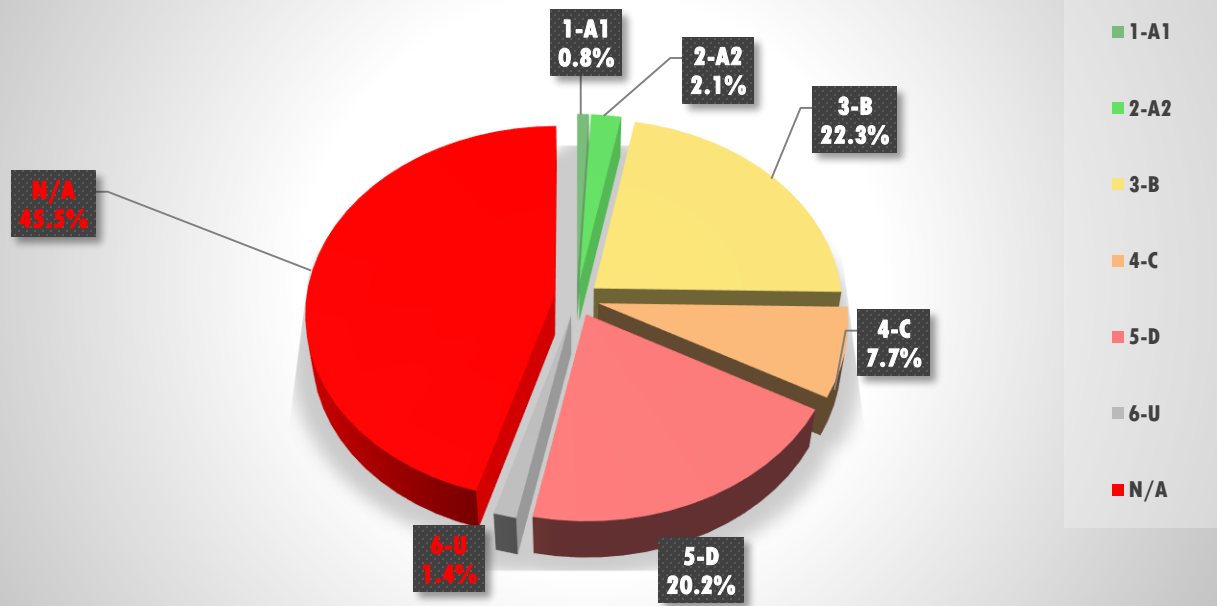
**CATZOC / Usage Band 3**



**CATZOC / Usage Band 4**



**CATZOC / Usage Band 5**



**SPI 1.2.2 Region H**

Sources :  
ICENC & PRIMAR files  
July 2023