



KONGSBERG

19TH SAIHC, MAURITIUS

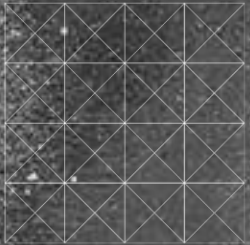
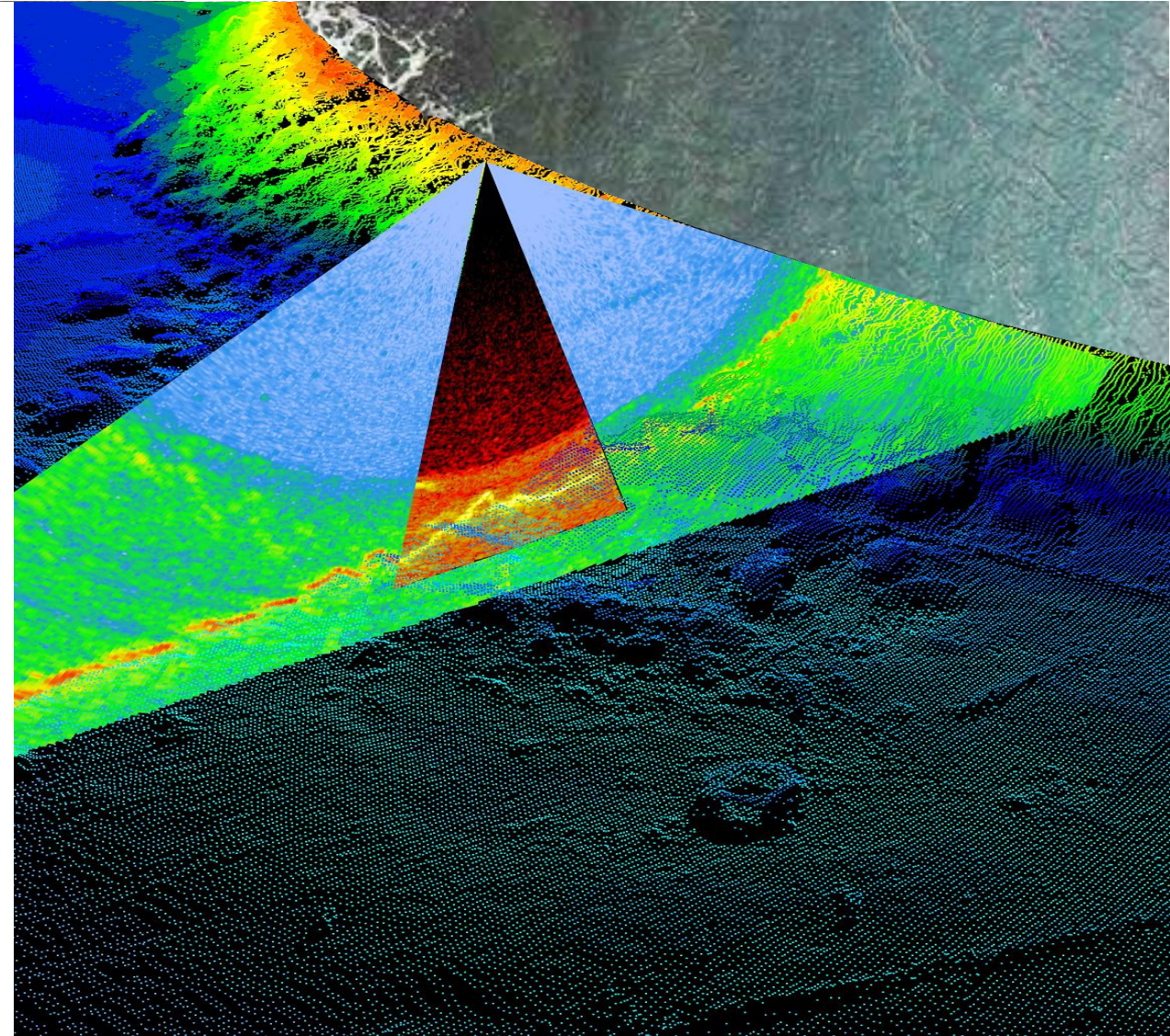
Kongsberg Discovery Company Presentation

29TH AUGUST 2023

Øystein Aasbø, Cdr (Ret.) RNoN

Vice President Sales – Underwater Mapping

Kongsberg Discovery

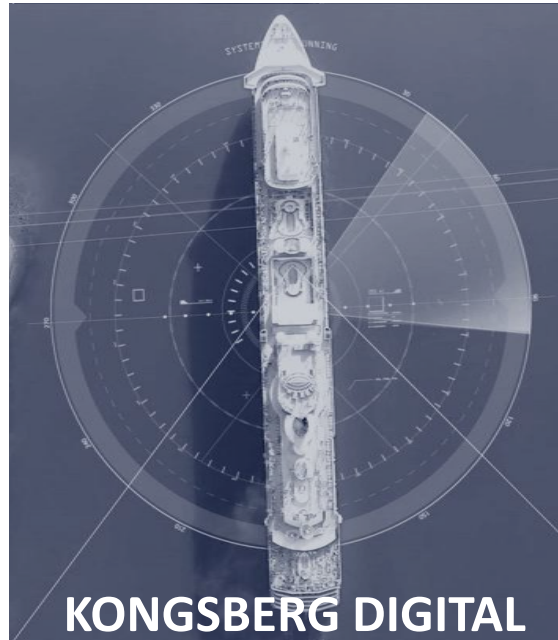




KONGSBERG

KONGSBERG GROUP (KOG) Business Areas

KONGSBERG is a global technology powerhouse





KONGSBERG

Kongsberg Maritime + Kongsberg Discovery

BROADEST PORTFOLIO OF
PRODUCTS
FOR THE MARITIME
INDUSTRY

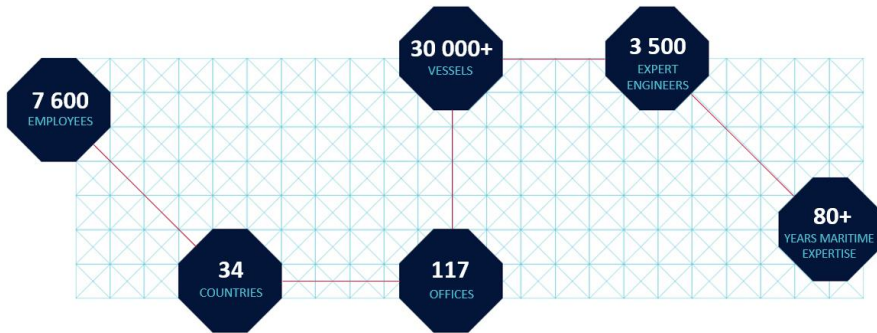


RV SIR DAVID ATTENBOROUGH

The KONGSBERG Global Reach



KONGSBERG



Singlebeam Echo Sounder – EA440SP

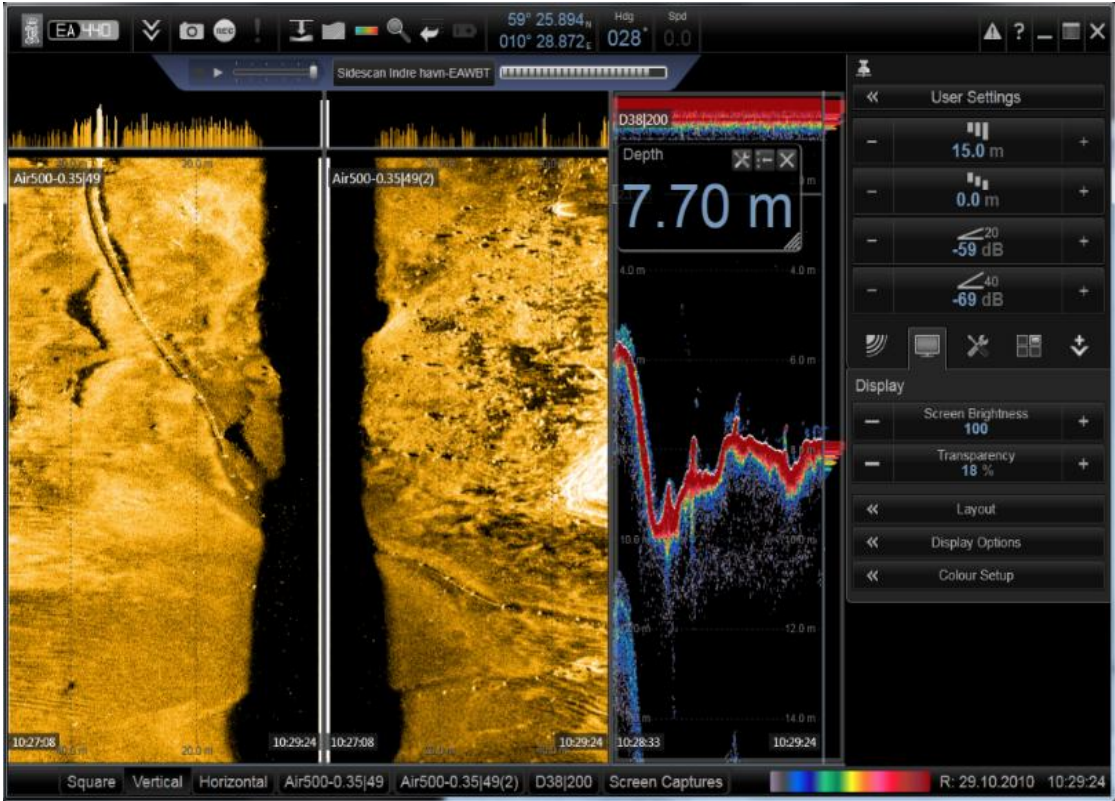


KONGSBERG

Portable splashproof system



EA software



Typical transducers:



200 kHz



500 kHz



15 kHz

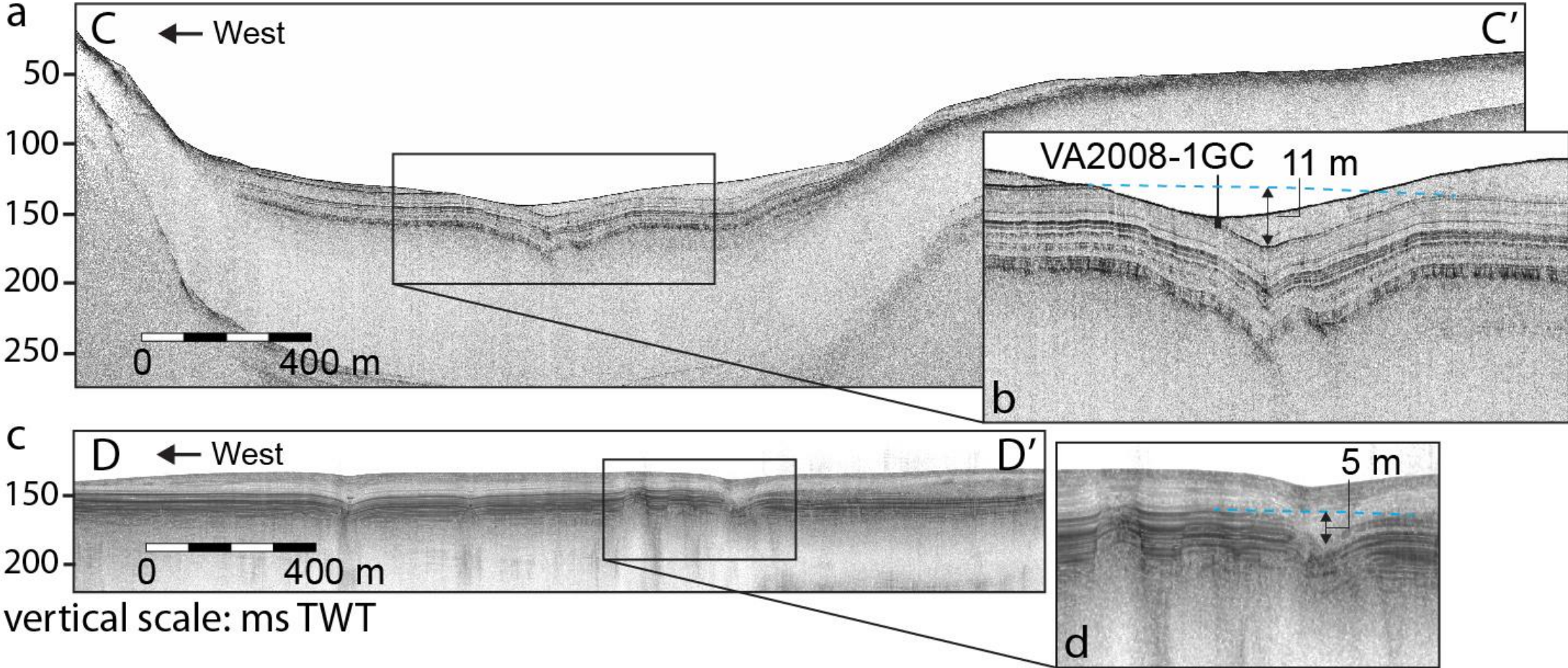


Sidescan 200 and 500 kHz

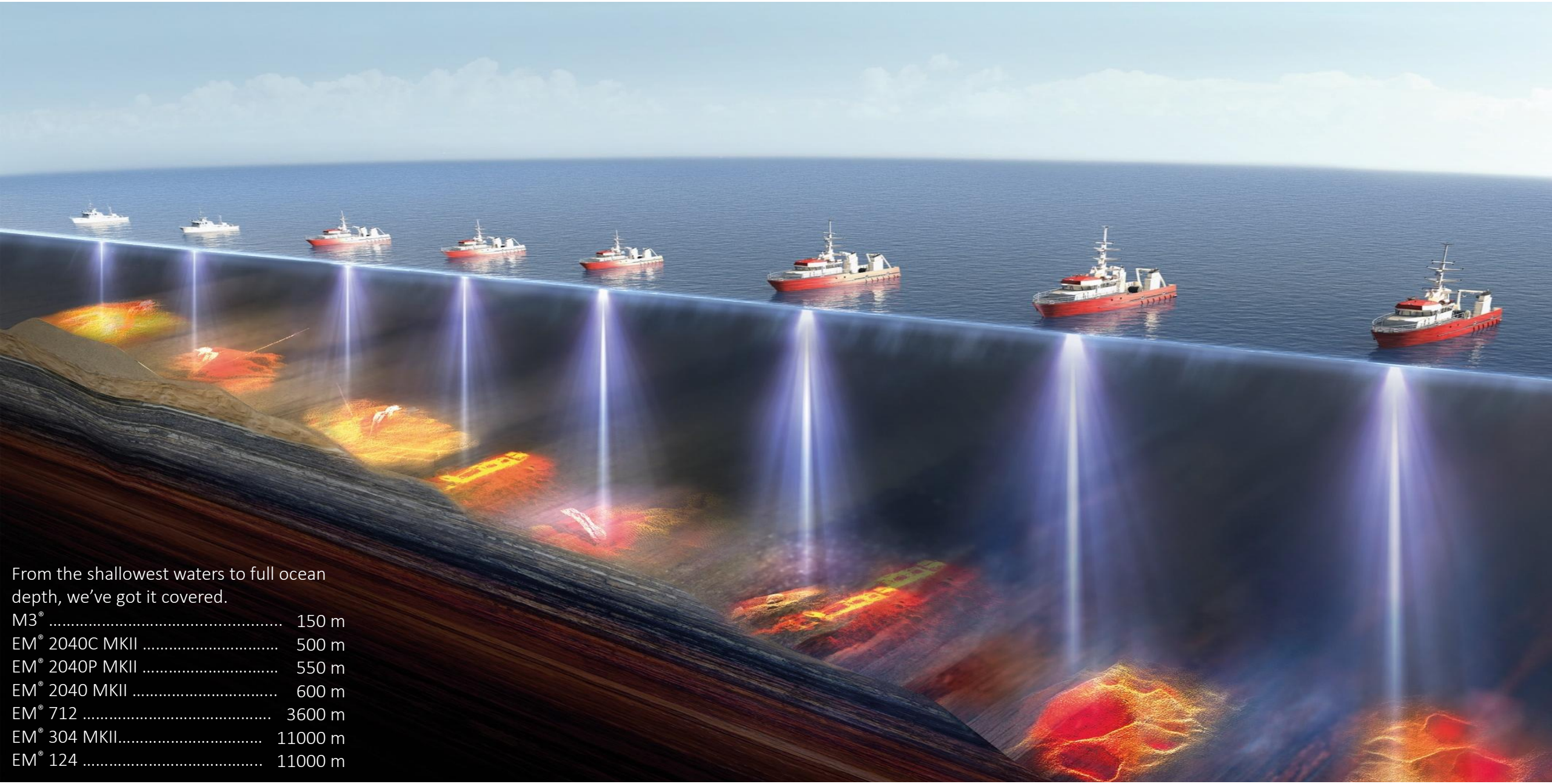
Singlebeam Echo Sounder – EA440SP



KONGSBERG



Multibeam Echo Sounders – The Full Range



From the shallowest waters to full ocean depth, we've got it covered.

M3°	150 m
EM° 2040C MKII	500 m
EM° 2040P MKII	550 m
EM° 2040 MKII	600 m
EM° 712	3600 m
EM° 304 MKII.....	11000 m
EM° 124	11000 m



KONGSBERG

Multibeam Echo Sounders

Transducer Size vs Frequency and Beam Width

EM[®] 2040C MKII (1 x 1 degree)
Ø 0.3m



200 – 400 kHz

Range 0.5m – 500m

Option: 700 kHz

EM[®] 2040P MKII (1 x 1 degree)
482 x 298 x 166 mm



200 – 400 kHz

Range 0.5m – 550m

Option: 600 and 700 kHz

EM[®] 2040-07 MKII (0.7 x 0.7 degree)
~0.4m x 0.4m



200 – 400 kHz

Range 0.5m – 600m

Option: 600 and 700 kHz



KONGSBERG

Multibeam Echo Sounders

Transducer Size vs Frequency and Beam Width

EM[®] 712 (2 x 2 degree)
~0.5m x 0.5m



40 – 100 kHz

Range 3m – 3500m

EM[®] 304 MKII (0.5 x 0.5 degree)
~6.8m x 6.5m



20 – 32 kHz

Range 10m – Full ocean depth

EM[®] 124 (1 x 1 degree)
~8m x 7m



12 kHz

Range 20m – Full ocean depth

EM[®] 2040C MKII/EM[®] 2040 MKII – Installation

Very high resolution Multibeam Echo Sounder



KONGSBERG



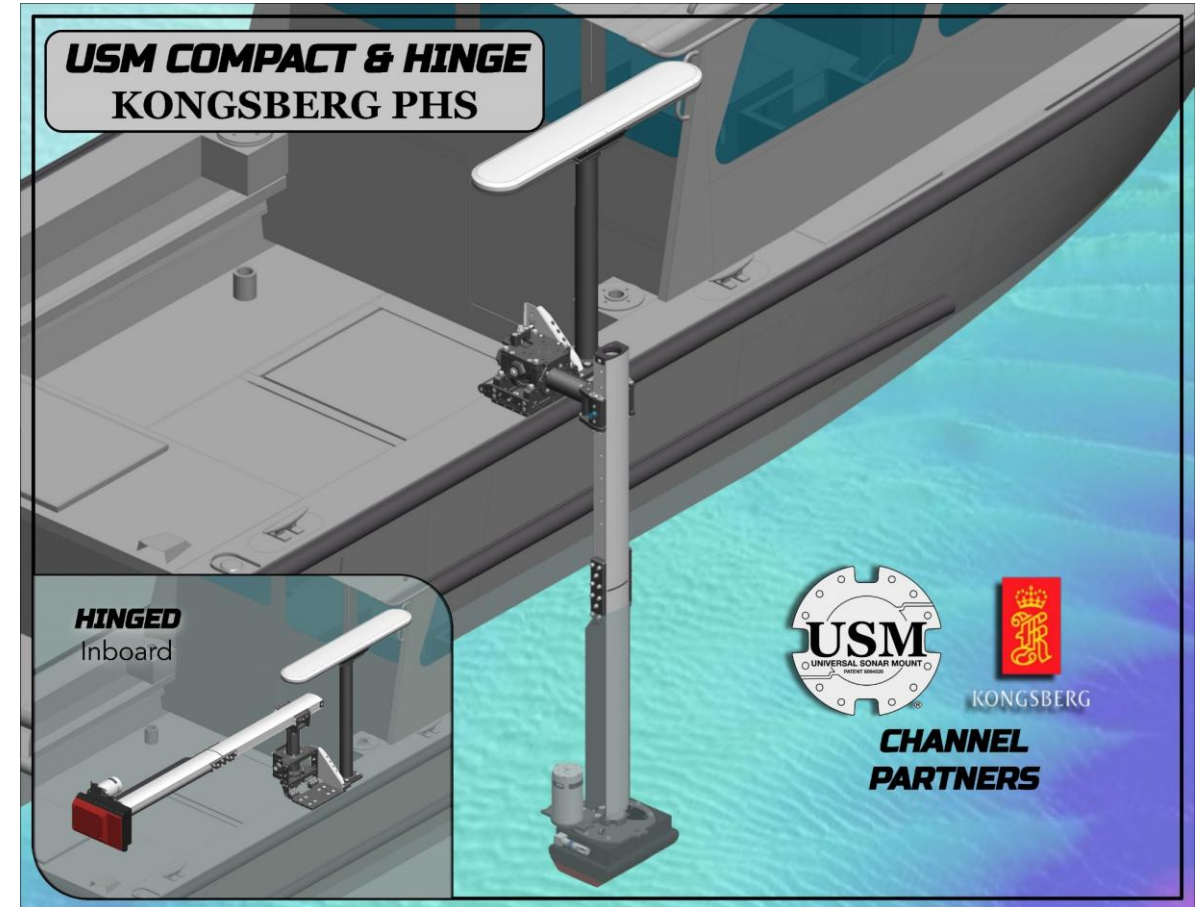
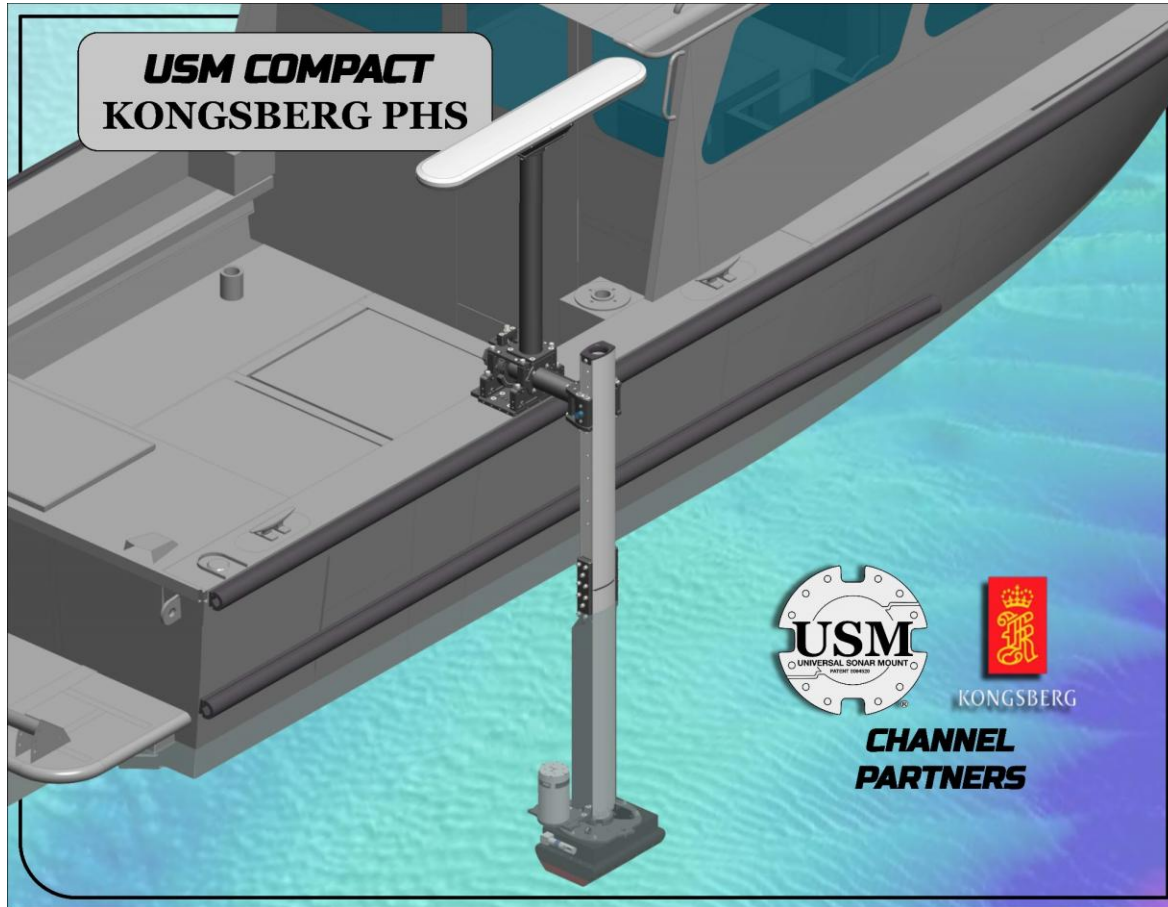
Applications from very high-resolution inspection to shallow water surveys.

EM[®] 2040P MKII – Installation

Very high resolution Multibeam Echo Sounder



KONGSBERG

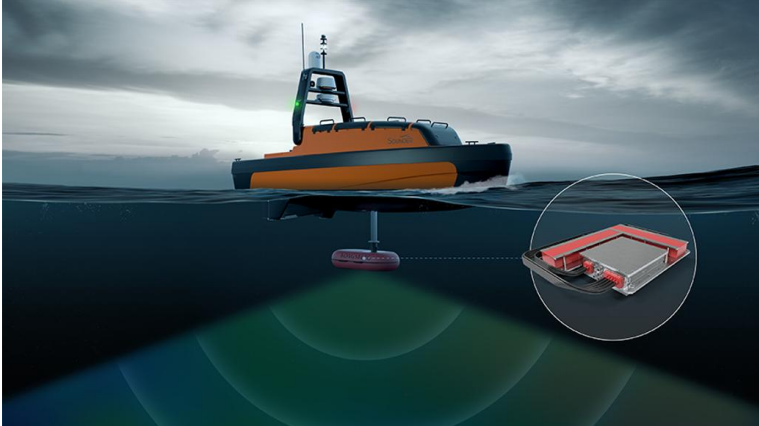


EM 712 Medium Water Multibeam Echo Sounder

High Resolution Multibeam Echo Sounder on USVs



KONGSBERG



Kongsberg Discovery's Sounder USV



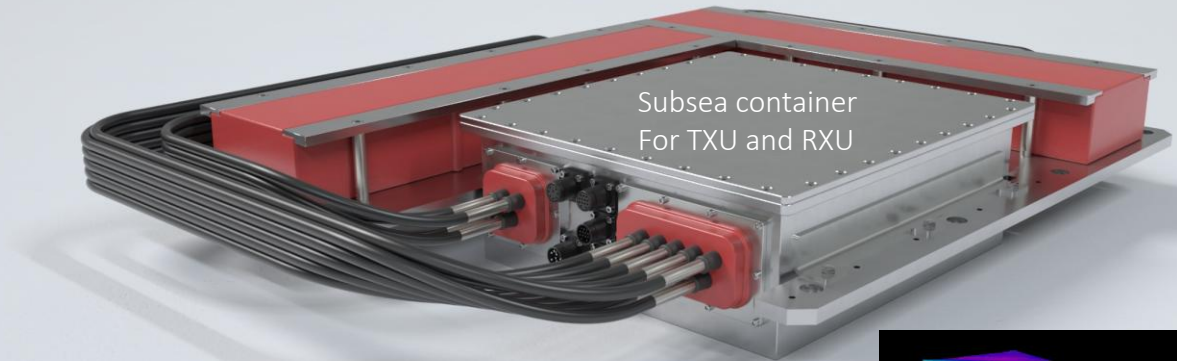
Exail's DriX

Dry compartment

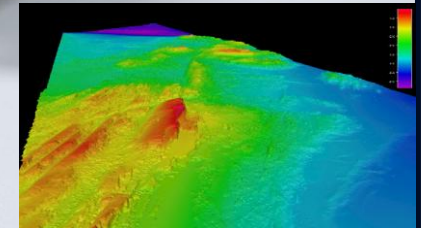


Wet compartment

Transducers and electronics mounted in gondola



Container
Approx 0.6 x 0.6 x 0.3m, 150kg

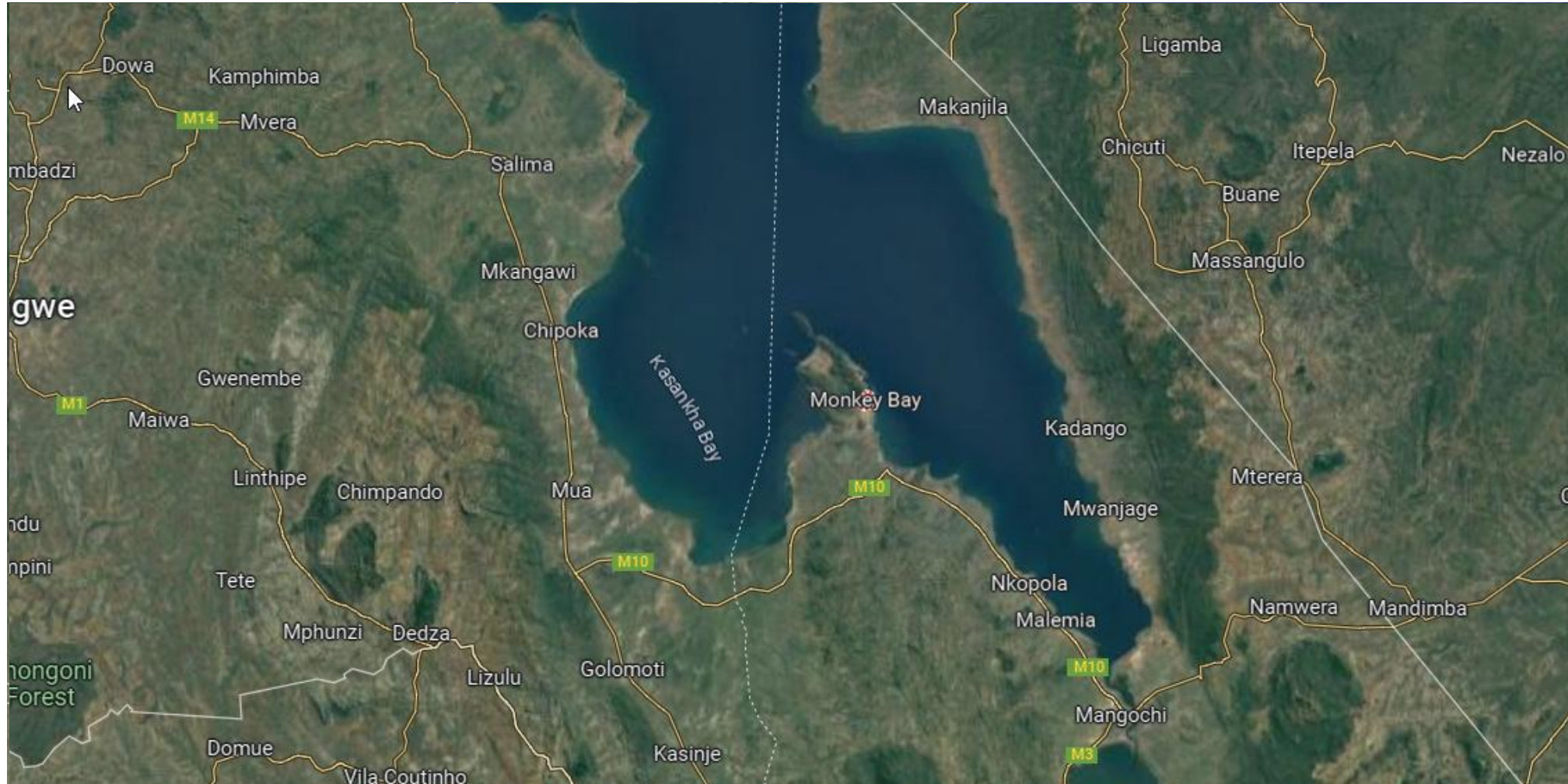


African Great Lakes and Rivers Working Group

Collaboration through practical demonstration



KONGSBERG



African Great Lakes and Rivers Working Group

Collaboration through practical demonstration



KONGSBERG



RV Timba – Malawi Hydrographic Unit

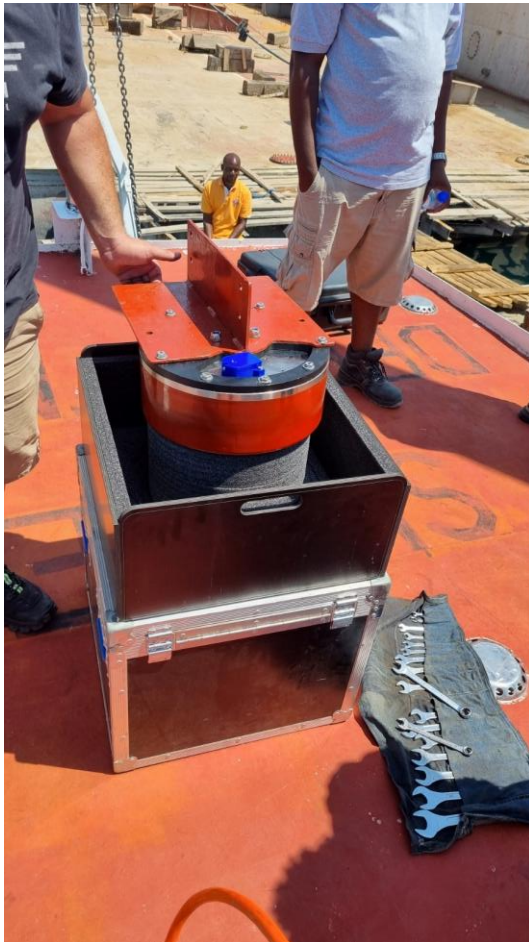


African Great Lakes and Rivers Working Group

Collaboration through practical demonstration



KONGSBERG

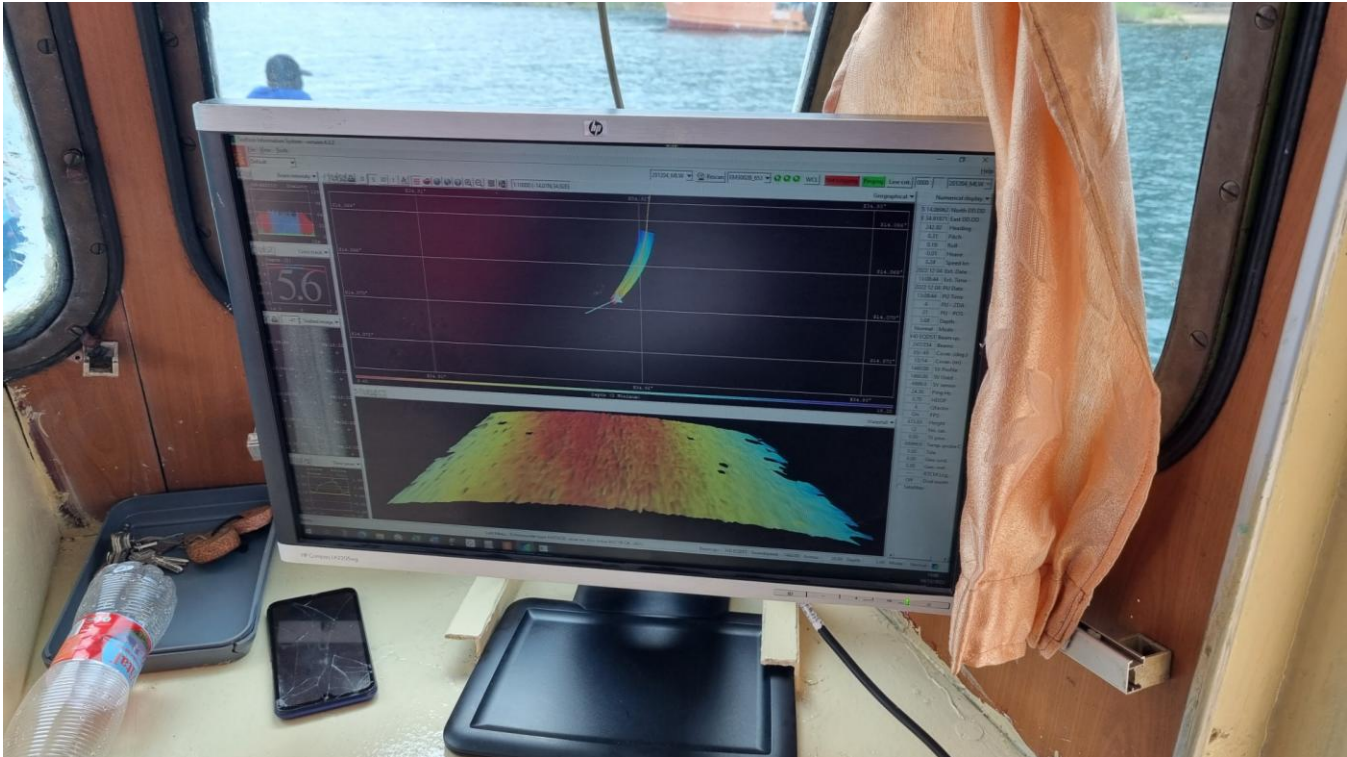


African Great Lakes and Rivers Working Group

Collaboration through practical demonstration



KONGSBERG

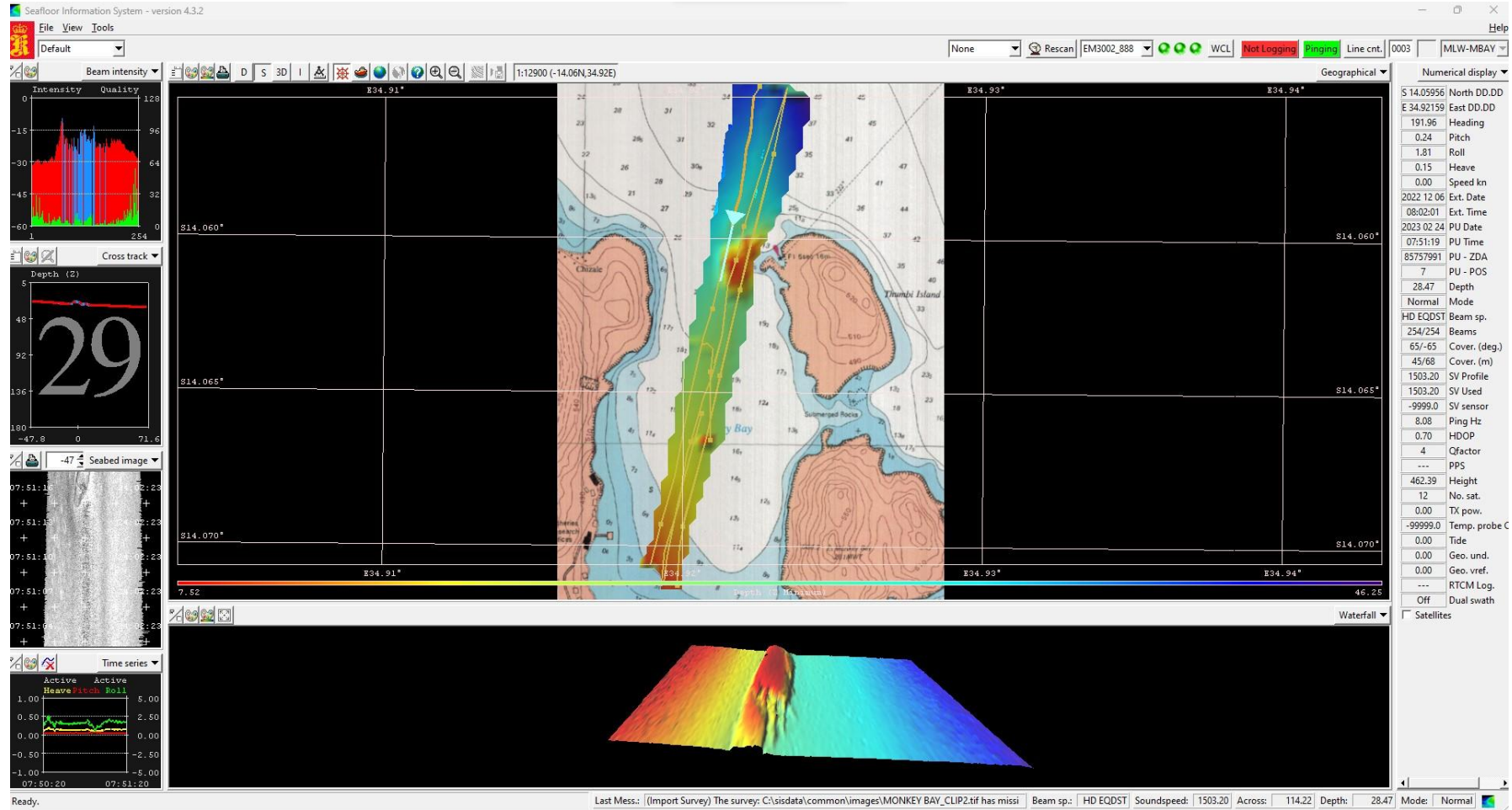


African Great Lakes and Rivers Working Group

Collaboration through practical demonstration



KONGSBERG



African Great Lakes and Rivers Working Group

Collaboration through practical demonstration



KONGSBERG





KONGSBERG

A demonstration of remote operations

SIS Remote





KONGSBERG

**Thank you for your
attention!**

oystein.aasbo@kd.kongsberg.com

