

INTRODUCTION TO UNDERWATER SURVEYS (PTY) LTD

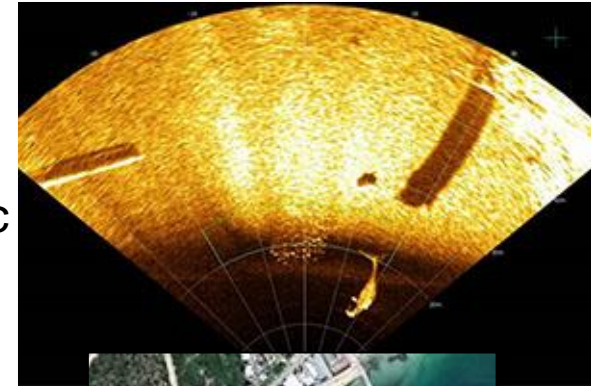


**UNDERWATER
SURVEYS**

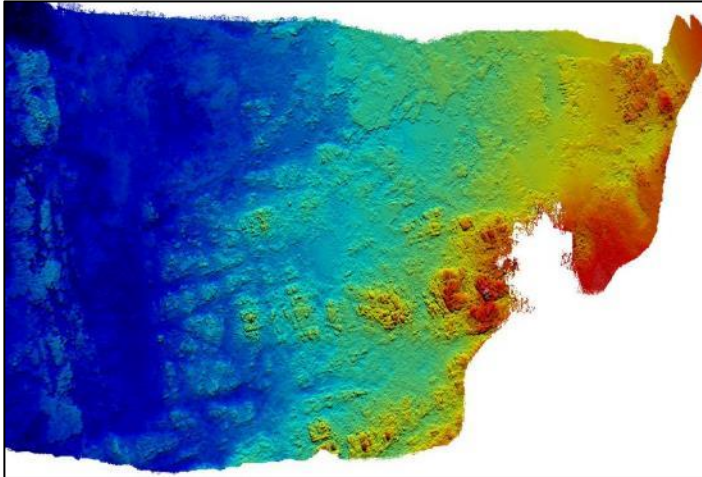
Presented by: Theo Stokes
General Manager

Quick Facts

- 22 years
- 15 permanent employees
 - 205 years collective experience in hydrographic surveys
- Dynamic team
- Operate regionally
- Solution orientated
 - offshore marine equipment & services
 - near shore and inland waters
- Represent several specialist manufacturers
- Support IHO activities within region
- Support & Capacity Building
- Good reputation throughout Africa



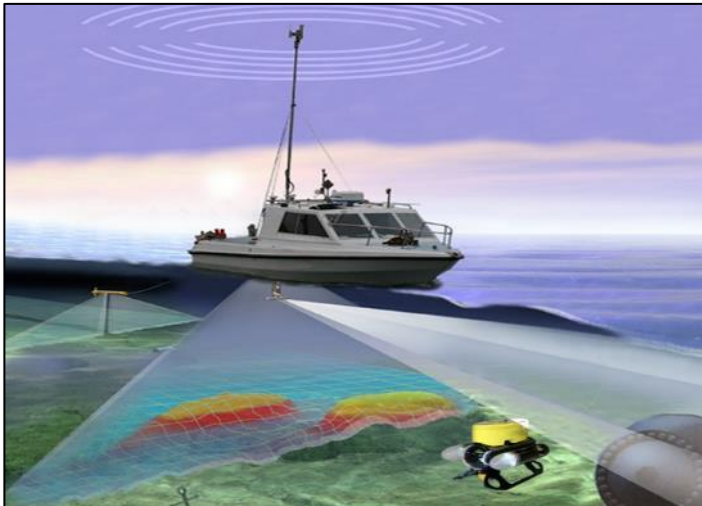
Our Market



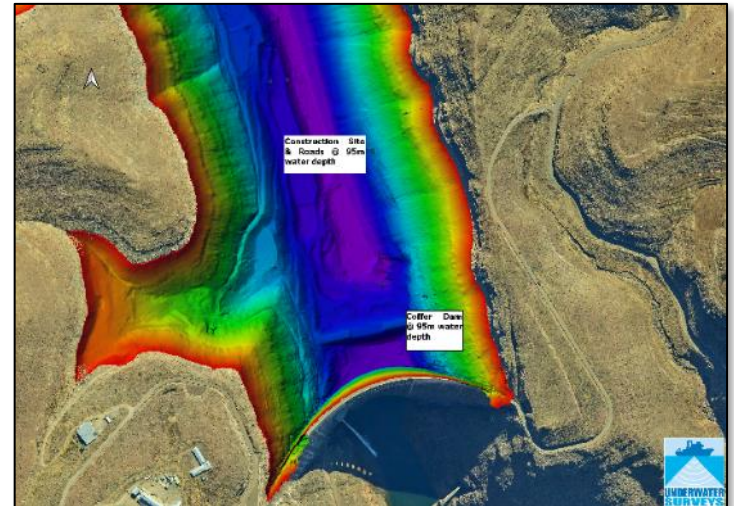
Offshore Surveys



Offshore Positioning



Naval Defense

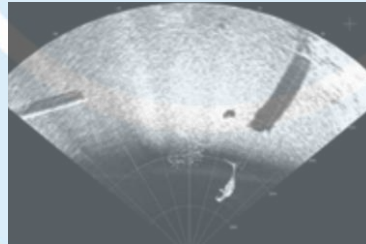


Inland Services

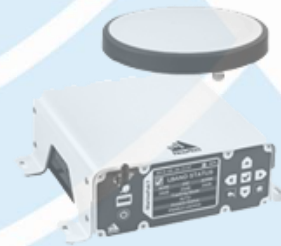
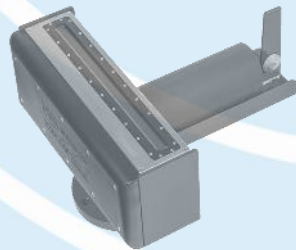
Our Approach



SOLUTIONS



SYSTEMS



PRODUCTS

Our Locations

Cape Town Head Office:

Section 1 G&F Park
C/o Gateway Close & Capricorn Drive
Capricorn Park, 7945
Cape Town, South Africa



Nelspruit Office:

The Pride
12B Porcupine Street
Nelspruit, 1200
South Africa



Walvis Bay Office:

Walvis Bay
Namibia



Our Assets



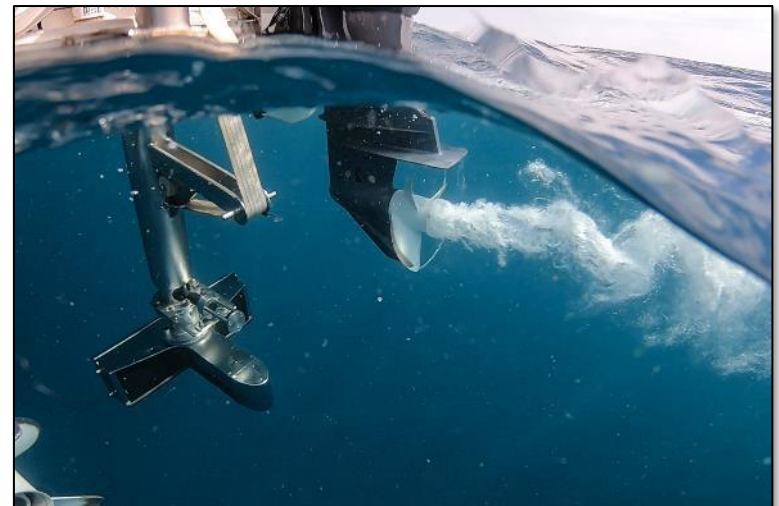
UWS Survey Vessel – Blue Dolphin



UWS USV – Enduro



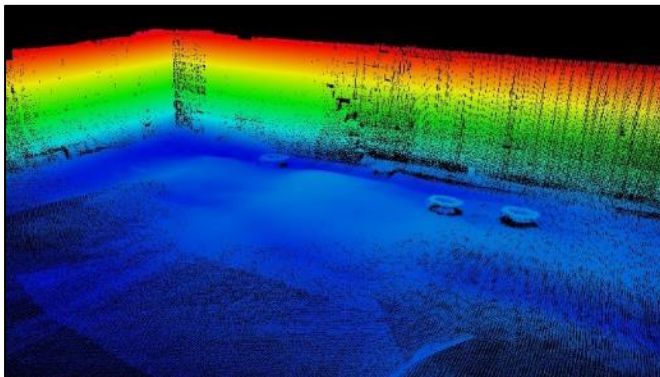
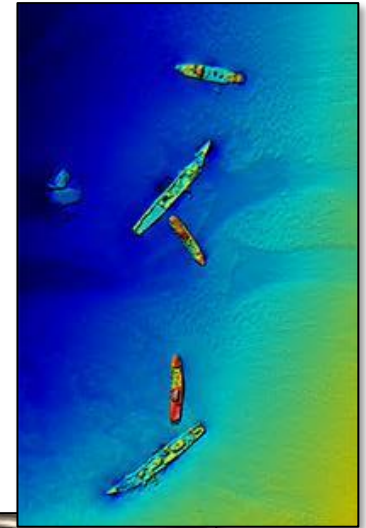
UWS Semi-Rigid - Falcon



UWS MBES on Blue Dolphin

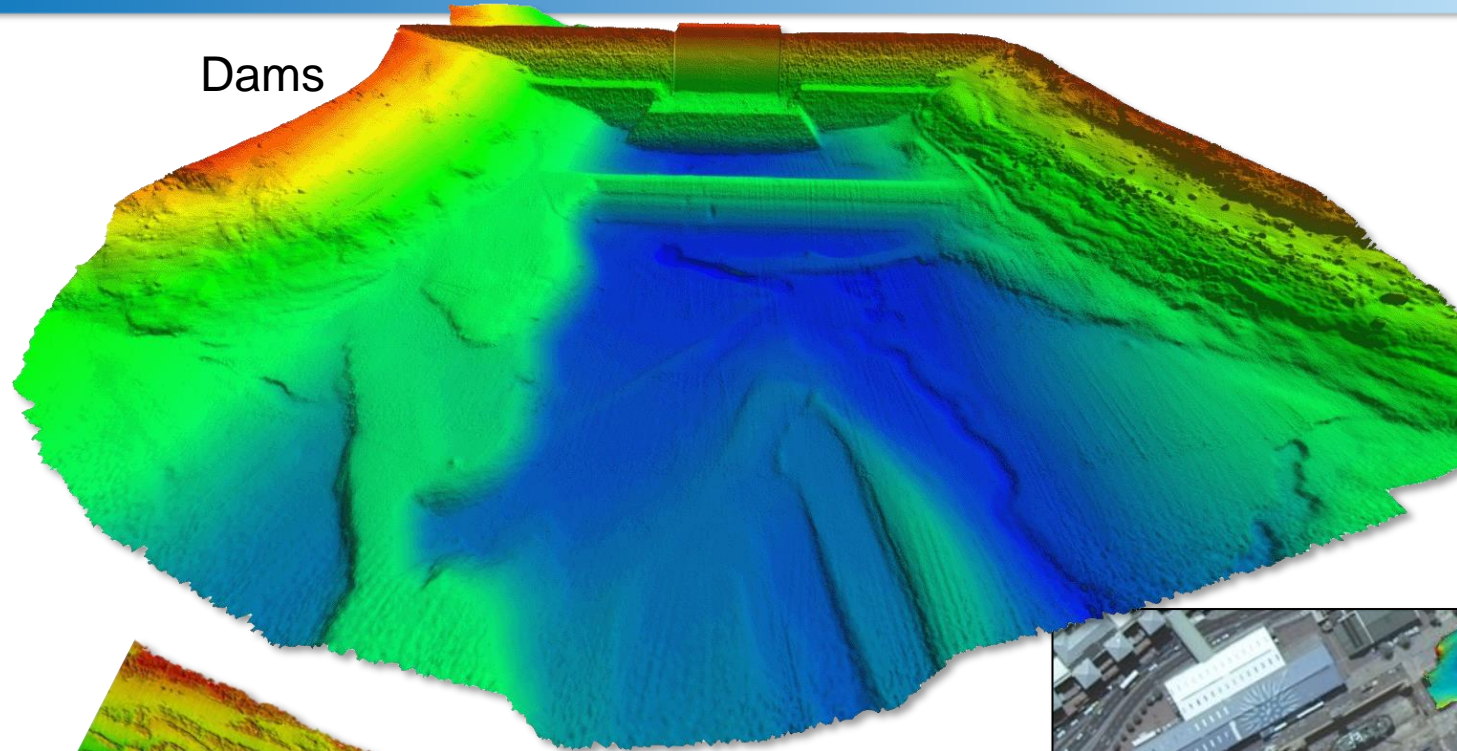
Portfolio of Services

- Offshore Hydrographic Services
- Positioning
- Port / Dredging Surveys
- Inland Surveys
- Civil Engineering Surveys
- Waterside Security
- Capacity Building & Training
- Product Sales and Support
- Vessel Dimension Control Surveys

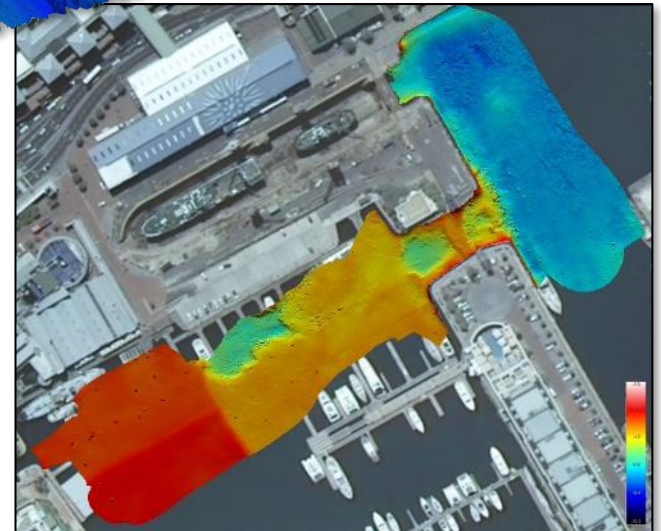


High Resolution Multibeam Survey

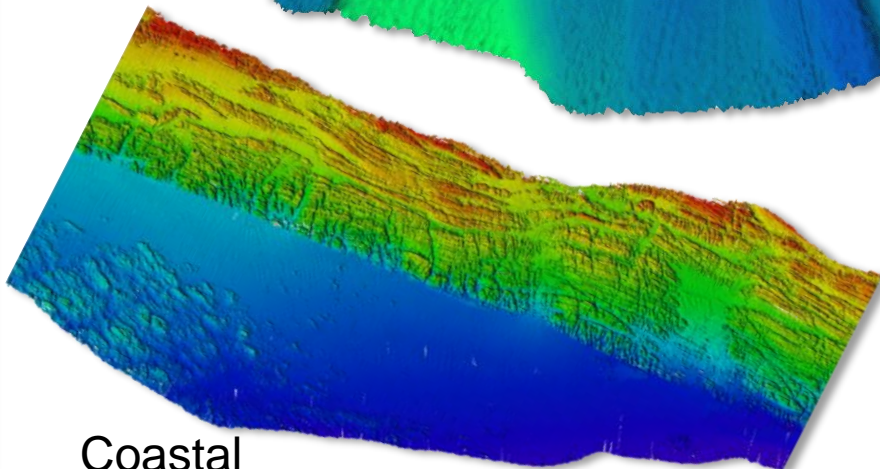
Dams



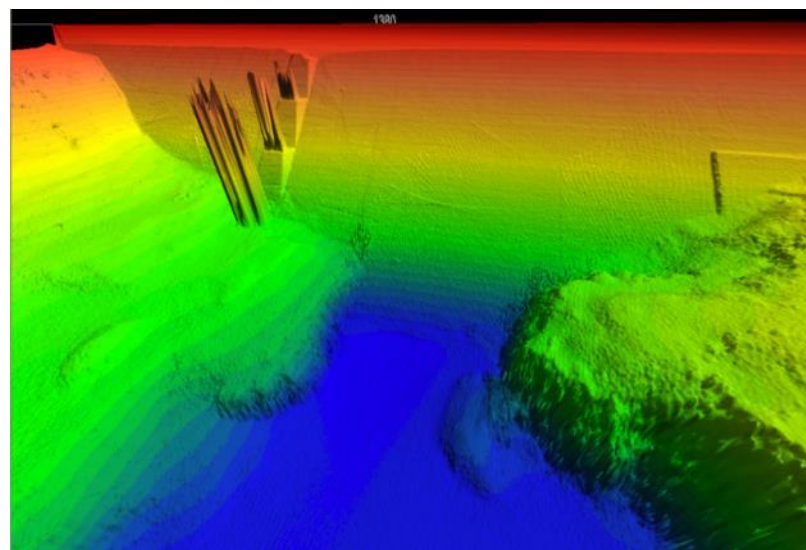
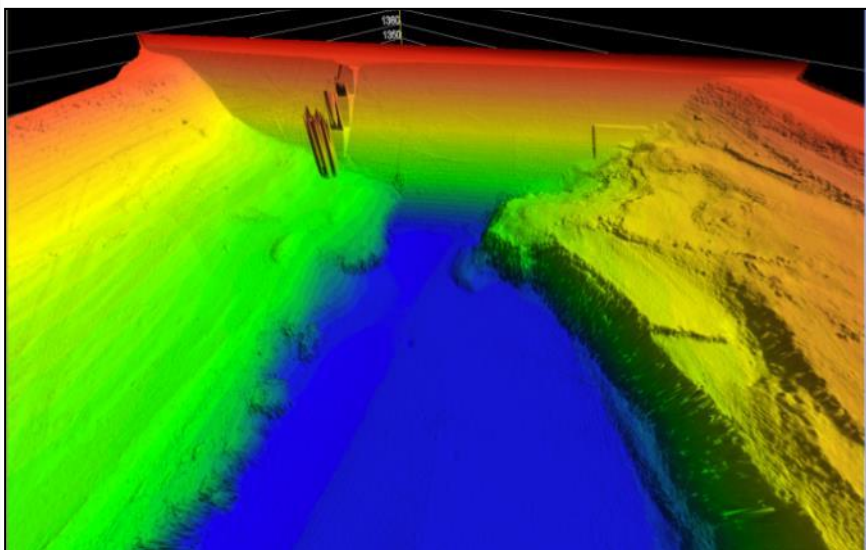
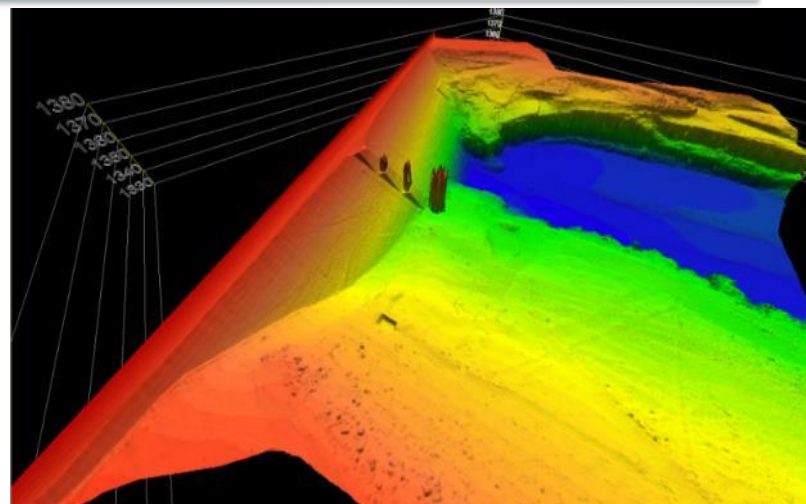
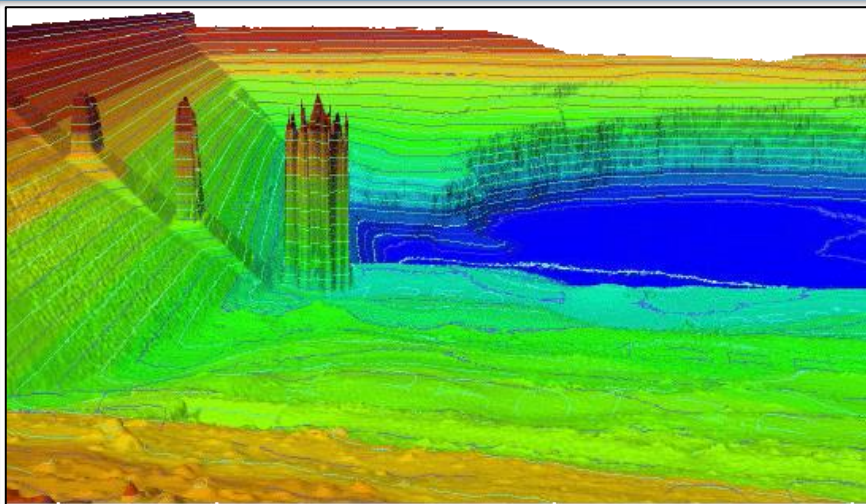
Harbours



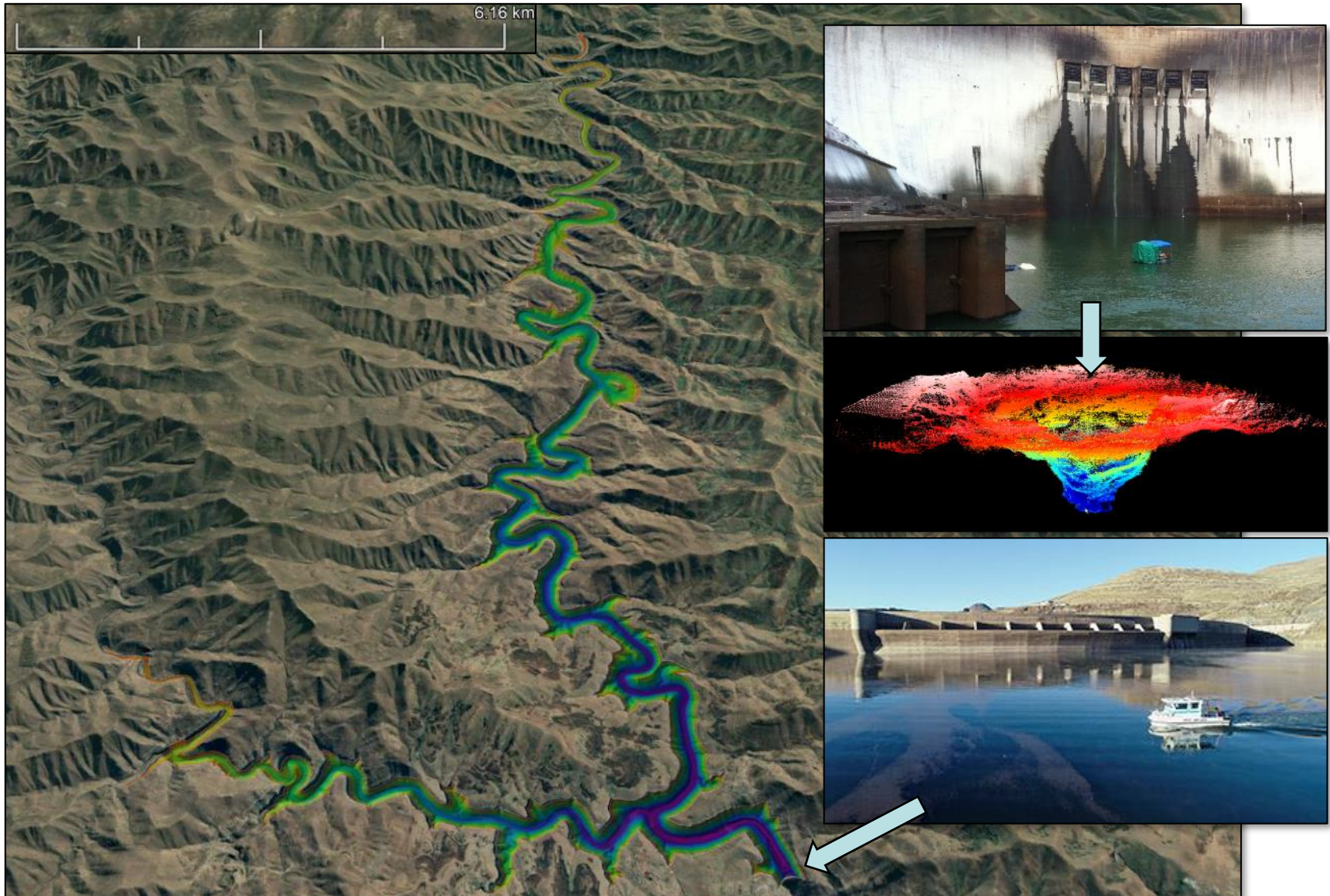
Coastal



Underwater Dam Wall Inspections



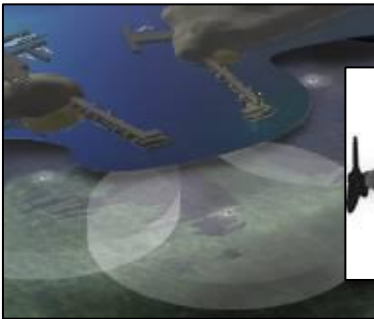
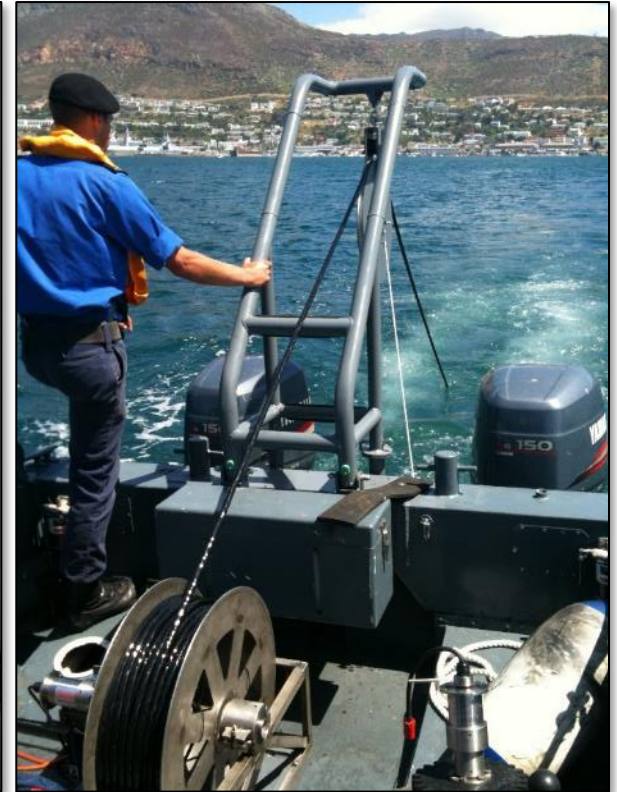
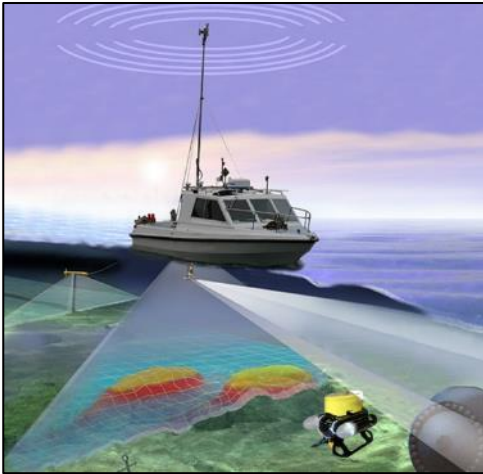
Dam Basin & Spill Pool Surveys



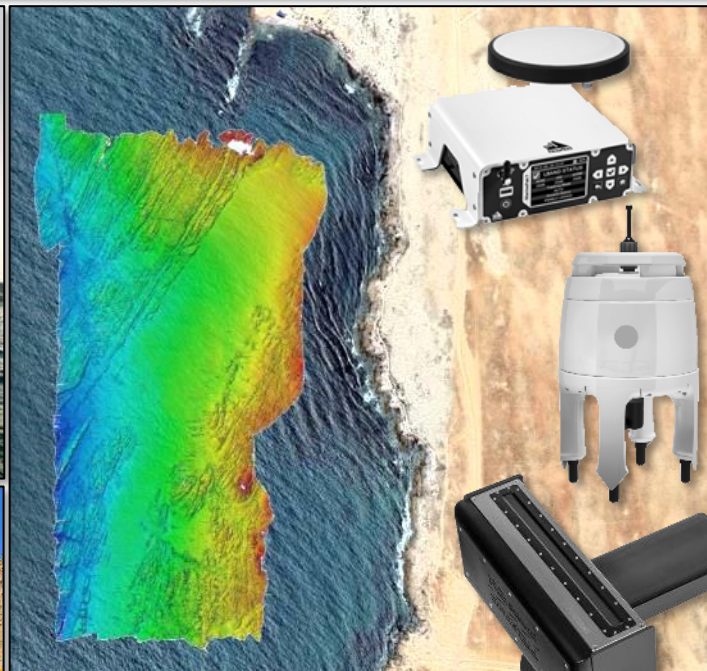
Mining Dams and Pond Surveys



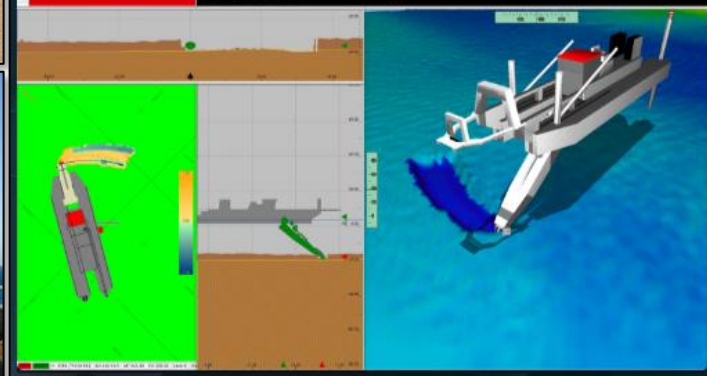
Naval Support



Diamond Mining Support

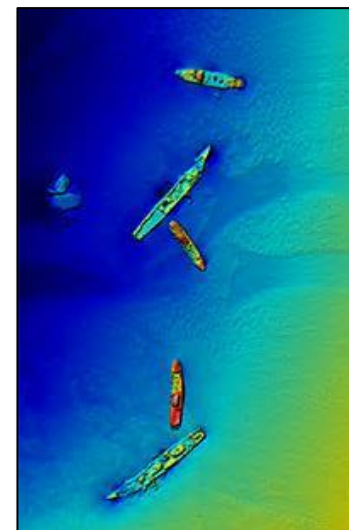


General State:	Dredging:
Mean Actual Water Level:	3.43 [m]
Cutter Head CoG Delta Z:	19.11 [m]
Cutter Head CoG Height:	-17.68 [m]
Actual Water Level:	3.43 [m]
Intrusion Alarm:	OK



Capacity Building and Training

- On-the-job Survey Methodology Training
- Hydrographic Software Training
- Survey System Integration Training
 - Classroom
 - On-the-job
- Previous Experience
 - Mozambique – Ports Authority
 - Mozambique – INAHINA
 - Malawi – Hydrographic Office
 - Tanzania – Ports Authority
 - South Africa – Transnet National Ports Authority
 - South Africa – South African Institute for Aquatic Biodiversity
 - South Africa – SA Navy
 - South Africa – National Council for GeoScience
 - Namibia – De Beers Marine
 - Namibia - NAMPORT



Product Sales and Support

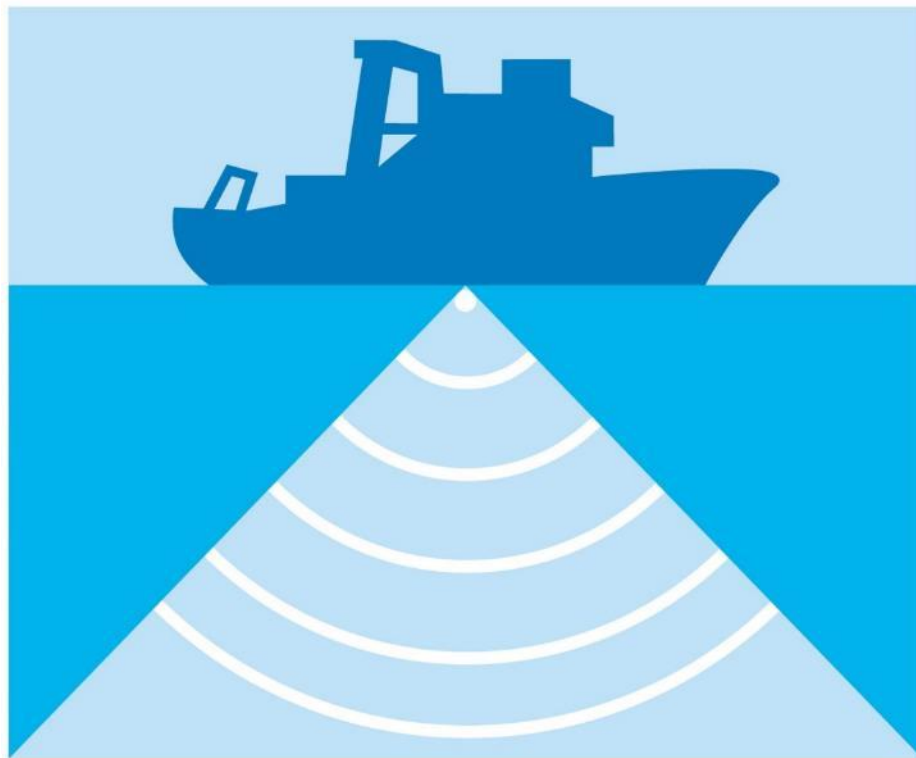


- Multibeam Echosounders
- Singlebeam Echosounders
- Side Scan Sonar & Sub-Bottom Profilers
- Motion & Attitude Sensors
- Imaging Sonars
- DGPS Solutions
- Fibre Optic Multiplexers
- Oceanographic Equipment
- Underwater Positioning
- Hydrographic Software Solutions
- Underwater Cables & Connections

Thank you



Visit our Website and YouTube Channel



**UNDERWATER
SURVEYS**
www.underwatersurveys.com



[UWS Website](http://www.underwatersurveys.com)



[UWS YouTube](https://www.youtube.com/underwatersurveys)