



# **20<sup>th</sup> SEMINAR OF SOUTHERN AFRICAN & ISLANDS HYDROGRAPHIC COMMISSION**

## **NATIONAL REPORT - UGANDA**

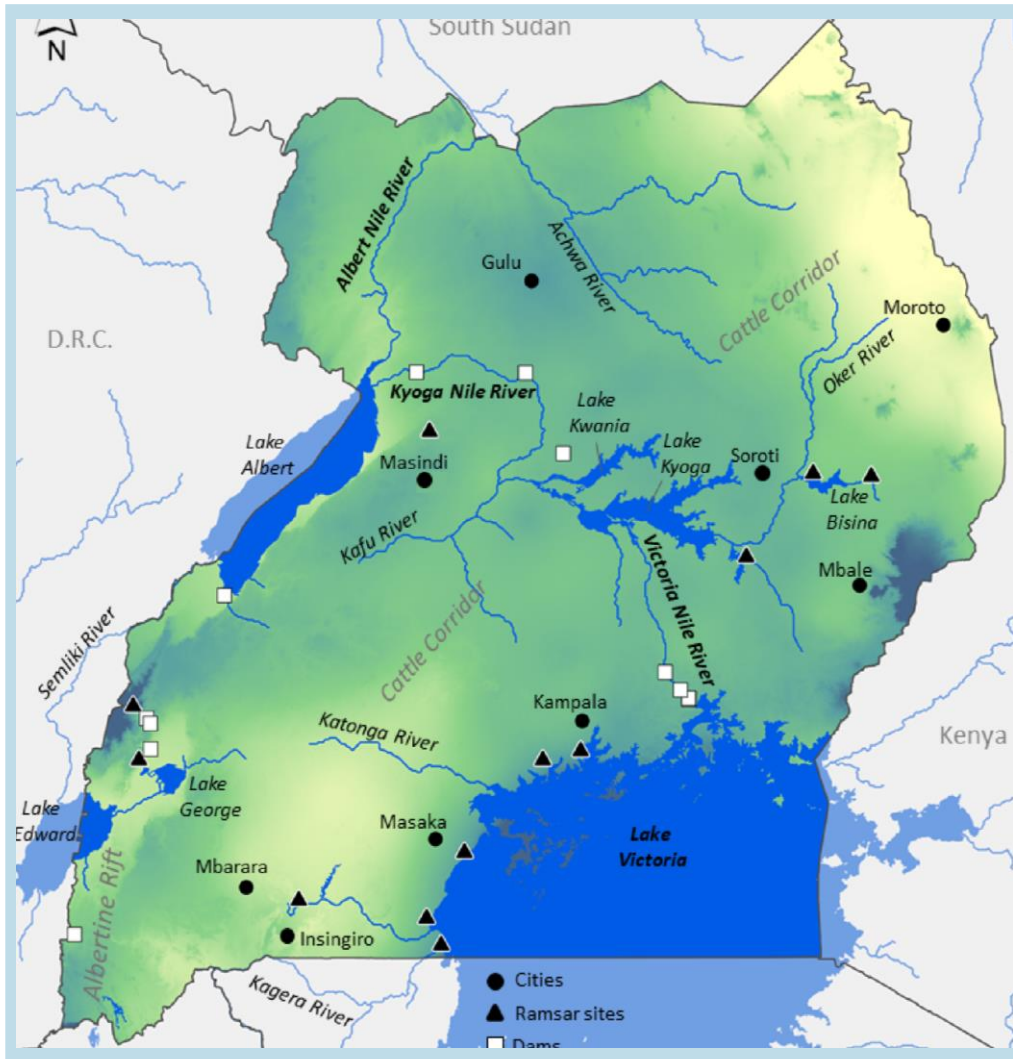
Amongin Anne - [anneamongin@gmail.com](mailto:anneamongin@gmail.com)

Southern African and Islands Hydrographic Commission



# Navigable waterways

2



Uganda is a landlocked state with only Inland waterways that cover 18% of the surface area.

Lake Victoria a transboundary lake shared by Kenya, Uganda and Tanzania. It is a 2<sup>nd</sup> largest freshwater lake in the world and the source of R.Nile the longest river in the world (6650km) pouring in the Mediterranean sea.

# Introduction

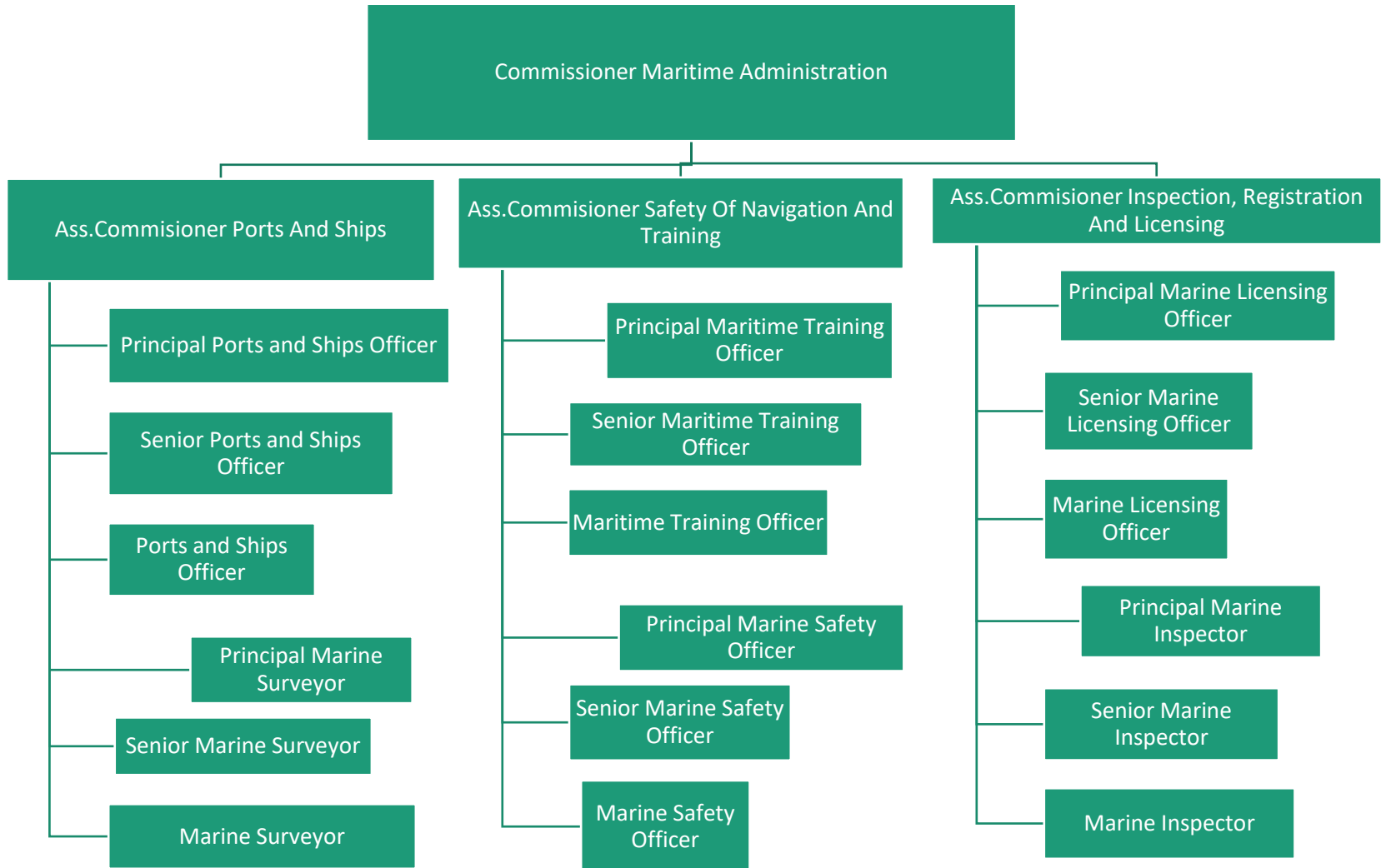


Uganda became the 7<sup>th</sup> non-coastal state and 169<sup>th</sup> member of the IMO in 2009.

Maritime Administration was formulated in 2017 as one of the Departments in the Ministry of Works and Transport with the mandate to regulate water transport in the country.

The Department is headed by a commissioner and falls under the Directorate of Transport of the Ministry.

# MARITIME STRUCTURE



# Legal frameworks

## National

- Inland Water Transport Act, 2021
- Inland Water transport fees regulation 2024

## Regional

- Lake Victoria Transport Act, 2007
- Lake Victoria Transport Regulations, 2010

## International

- IMO Conventions eg. SOLAS,
- SUA
- COLREG,
- STCW
- MARPOL,
- L.L,
- SAR
- FAL

# Recent surveys



No major surveys have been conducted in the recent year except A private shipping company called Mahathi Infra Ltd that did a route survey for its oil tankers that ply from Kisumu to Bukasa(location of the oil jetty and storage terminal on L. Victoria)

The Minister of works and Transport however wrote the Maritime Organisation for Eastern, southern and Northern Africa (MOESNA)



# Mahathi Oil Tanker(MT Kabaka Mutebi II and MT. Elgon)



They have two oil tanker with each has carrying capacity of up to 4.4 million litres of petroleum cargo with a deadweight of 3,687 tonnes measuring 118m by 23m and a draft of 2.5m

# Ports



Major ports on L. Victoria include Port Bell and Jinja Port.

Private ports include Mahathi Oil jetty on L. Victoria and Ntoroko Port on L. Albert





# Atons on Inland waterways



The 2 major port have light beacons to aid navigation and others are located in different landing sites in L. Victoria



Port bell has a number of wrecks floating and submerged at its pier



MV Barbus sunk just next to the dry dock at Port Bell causing a danger to navigation.

Also MV Kabalega sunk on the international route to Kisumu and Mwanza a distance of about 25 nm from Port bell



# Weather forecast



A total number of 9 weather buoys has been deployed on major inland lakes

The buoys are equipped with navigation equipment to direct sailors.



The buoys are to provide real time recording of the prevailing weather conditions on the lake.

# Maritime Search and Rescue, communication and Training



Maritime Rescue Coordination Centre has already been established to aid communication on Inland waters in times of emergency. The MRCC is to also start issuing notice to marinas



Construction of 9 search and rescue centers has commenced across major lakes(L. Victoria, Kyoga and Albert) to improve maritime safety.



The centers have been designed with training facilities for seafarers and fish drying shades for fishermen.



# Maritime Incidents



Maritime safety still a challenge due to poor boat standards especially fishing boats and fail to adhere to safety guidelines. Lake Victoria receives strong winds and tides from the months of June to September

Many of these accident happen at night because the boat operator take advantage to break laws like over loading, no use of life jackets and use of fishing vessels for transportation.



# Maritime resources



Government has procured several research vessel deployed on different lakes. These will aid in currying out research in different areas like health,

# Capacity building

1

- 1 staff from Uganda benefited from the IALA capacity building program completing a risk assessment course in France in 2023

2

- Uganda was represented at the 5<sup>th</sup> African Great Lakes & Rivers Working Group in Malawi

3

- Uganda was represented in the 19<sup>th</sup> SAIHC held in

# Challenges

1

- The lack of a hydrographic office to initiate and coordinate surveys. The Maritime department and the ministry of lands incorporate surveys

2

- Limited knowledge and expertise to conduct surveys

3

- Lack of modern survey equipment

# Capacity building requirements

- Training in areas of hydrographic surveying and cartography
- Regional coordination to share resources especially the survey equipment

# **Actions from SAIHC 19**

To take note of this report

Keep Considering Uganda in  
capacity building programs of IHO  
and SAIHC.