



# SOUTH WEST PACIFIC HYDROGRAPHIC COMMISSION

## INTERNATIONAL CHARTING COORDINATION WORKING GROUP (SWPHC ICCWG)

Report for SWPHC 17  
10<sup>th</sup> – 14<sup>th</sup> Feb 2020, Wollongong, Australia

Chair: Mr Robert Cario  
Australian Hydrographic Office

[robert.cario@defence.gov.au](mailto:robert.cario@defence.gov.au)

## Background

The SWPHC ICCWG was established in 2012 as a subsidiary of the SWPHC. It is made up of Producer Nations who publish Paper chart and ENC's in the SWPHC geographic area.

Its main responsibility is for the coordination of Nautical Charting in the region, ensuring the Paper Chart INT series is comprehensive and current and the ENC coverage is appropriate. The main focus is on paper Charts at 1:500,000 and smaller and ENC Nav Purpose 1 and 2 coverage.

The group operates as a correspondence group.

## Current SWPHC ICCWG Members

Australia (chair) Robert Cario – [robert.cario@defence.gov.au](mailto:robert.cario@defence.gov.au)  
France - Nicolas David - [nicolas.david@shom.fr](mailto:nicolas.david@shom.fr)  
New Zealand - Rachel Gabara - [rgabara@linz.govt.nz](mailto:rgabara@linz.govt.nz)  
UK - Lee Truscott - [lee.truscott@ukho.gov.uk](mailto:lee.truscott@ukho.gov.uk)  
USA - Sydney Catoire - [sydney.catoire@noaa.gov](mailto:sydney.catoire@noaa.gov)

## SWP Countries and their Charting Producer Nations

### SWPHC nations

### Primary Charting Authority (PCA)

#### SWPHC Members:

Australia  
Fiji  
France  
New Zealand  
Papua New Guinea  
Samoa  
Solomon Islands  
Tonga  
UK  
USA  
Vanuatu

Australia  
UK  
France  
New Zealand  
Australia  
New Zealand  
Australia  
New Zealand  
UK  
USA  
UK

#### Associate Members:

Cook Islands  
Indonesia  
Kiribati  
Nauru  
Niue  
Palau

New Zealand  
Indonesia  
UK  
UK  
New Zealand  
USA

SWPHC Observer:

New Caledonia                      France

Intergovernmental Observer Organization:

Secretariat of the Pacific Community (SPC)

Fed States of Micronesia	USA
Marshall Islands	USA
American Samoa	USA
Pitcairn Islands	UK
Guam	USA
French Polynesia	France
Northern Mariana Islands	USA
Tokelau	New Zealand
Tuvalu	UK
Wallis and Futuna	France

**S-11 Part B, Region L updates**

Updates are now managed through INTernational Chart Web Manager

**Paper INT charts produced since the last conference:**

LINZ Published new paper chart NZ 14628 (INT628) and withdrew NZ 93

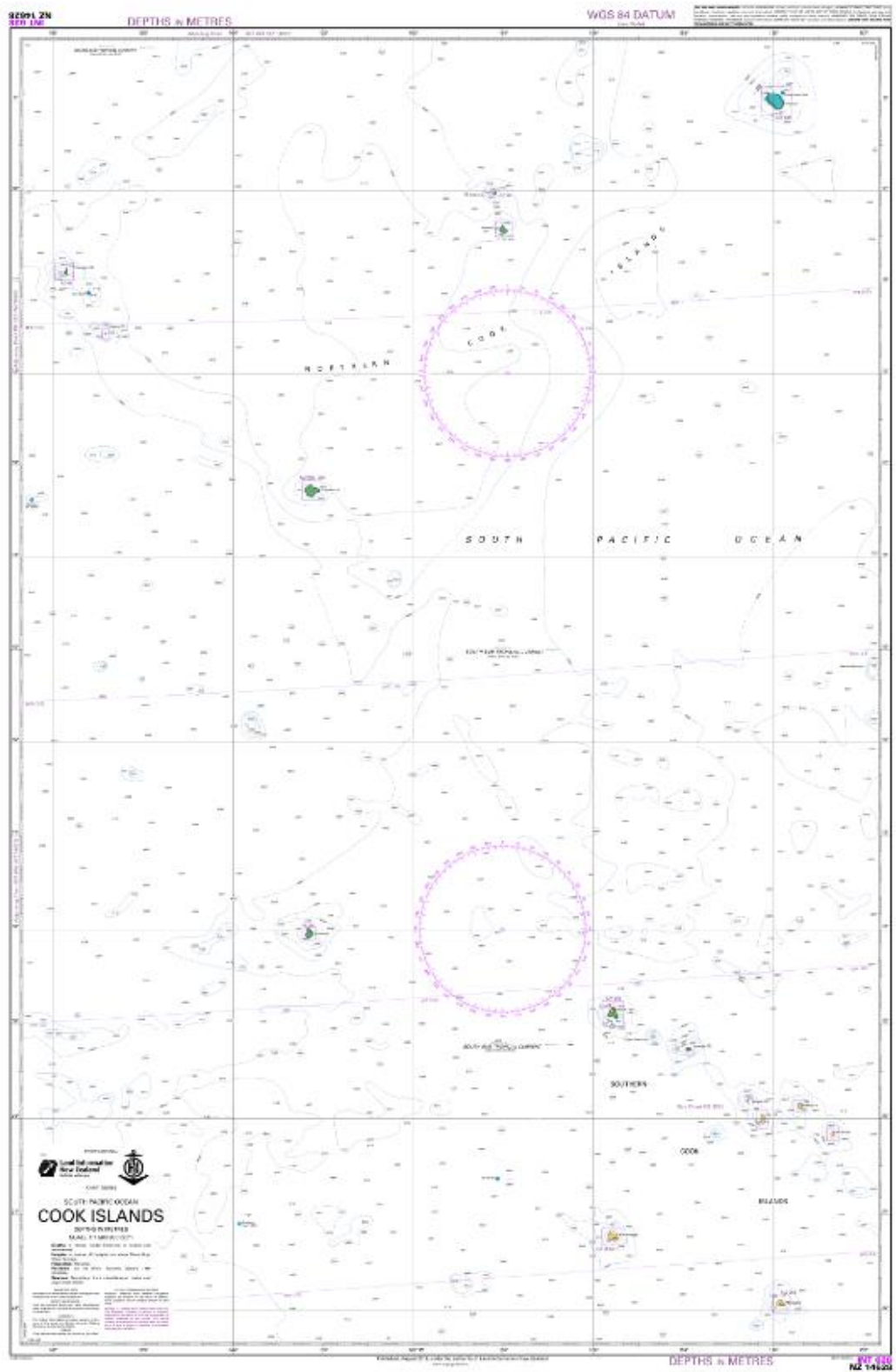


Figure 1: NZ 14628 (INT628) Cooks Island – Published Aug 2019 (LINZ)

**Nav Purpose 1 and 2 ENC produced since last conference:**

LINZ Published new ENC NZ214628 and withdrew ENC NZ200093 and NZ214631.

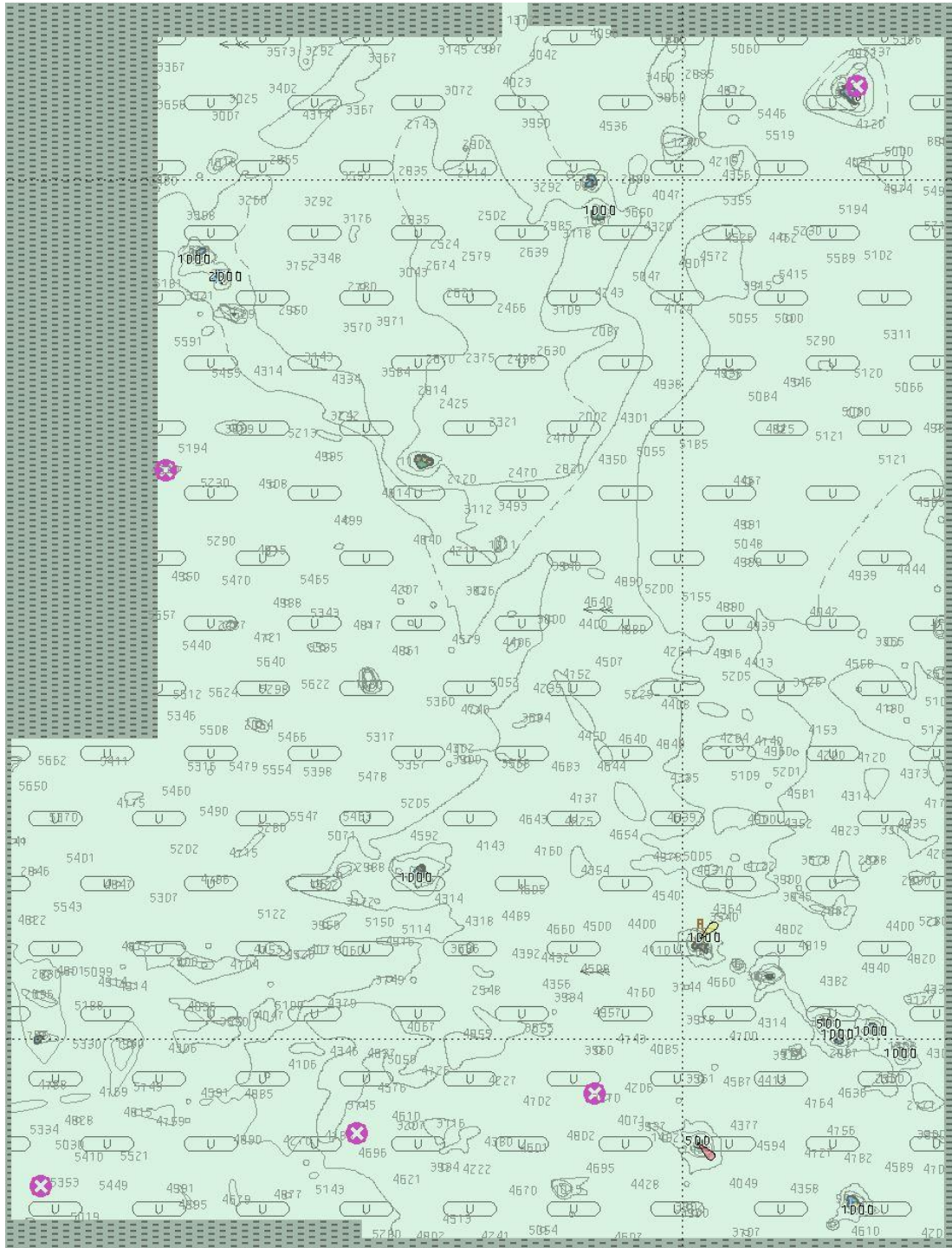


Figure 2: NZ214628 - South Pacific Ocean - Cook Islands - published June 2019 (LINZ)

## **INT Charts and 1 & 2 ENC underway:**

### SHOM

On French waters around New Caledonia, SHOM is producing a chain at scale 1:300000. FR6686 (INT6843) Nouvelle-Calédonie (partie Sud-Est) - Iles Loyauté and FR6768 (INT6844) - Nouvelle-Calédonie (partie Sud) - Ile des Pins - expected to be published in 2020.

## **Proposals for New INT Charts**

### LINZ

LINZ are still waiting to make a decision about withdrawing paper chart NZ 14630 (INT 630) as withdrawing this chart is contingent on some other factors.

### NOAA

#### *Paper INT Chart Update:*

NOAA is undertaking a five-year program to end all raster and paper nautical chart production. Ultimately, production of all NOAA paper nautical charts (including paper INT charts), raster navigational charts (NOAA RNC®), and related products will cease.

#### *Nav Purpose 1 and 2 ENC Updates:*

NOAA's Office of Coast Survey is in the process of rescheming its ENC suite. Current ENC boundaries are based on the paper nautical chart extents, but will transition to a rectangular grid following latitude and longitude lines. Additionally, reschemed ENCs will have a standardized size with two scales per usage band. Table 1 pertains to Nav Purpose 1 and Nav Purpose 2 reschemed ENCs.

Usage Band	Navigational Purpose	Cell Height (decimal degrees)	Cell Width (decimal degrees)	Reschemed NOAA ENC Scale
1	Overview	19.2°	19.2°	1: 5,120,000
				1: 2,560,000
2	General	4.8°	4.8°	1: 1,280,000
				1: 640,000

Table 1: Reschemed NOAA ENC dimensions and scales for Nav Purpose 1 and 2 ENCs

The figures below represent the current ENC boundaries and future reschemed ENCs for Nav Purpose 2 in Region L. NOAA plans to coordinate with other Hydrographic Offices and use a CATCOV solution to prevent ENC overlap.

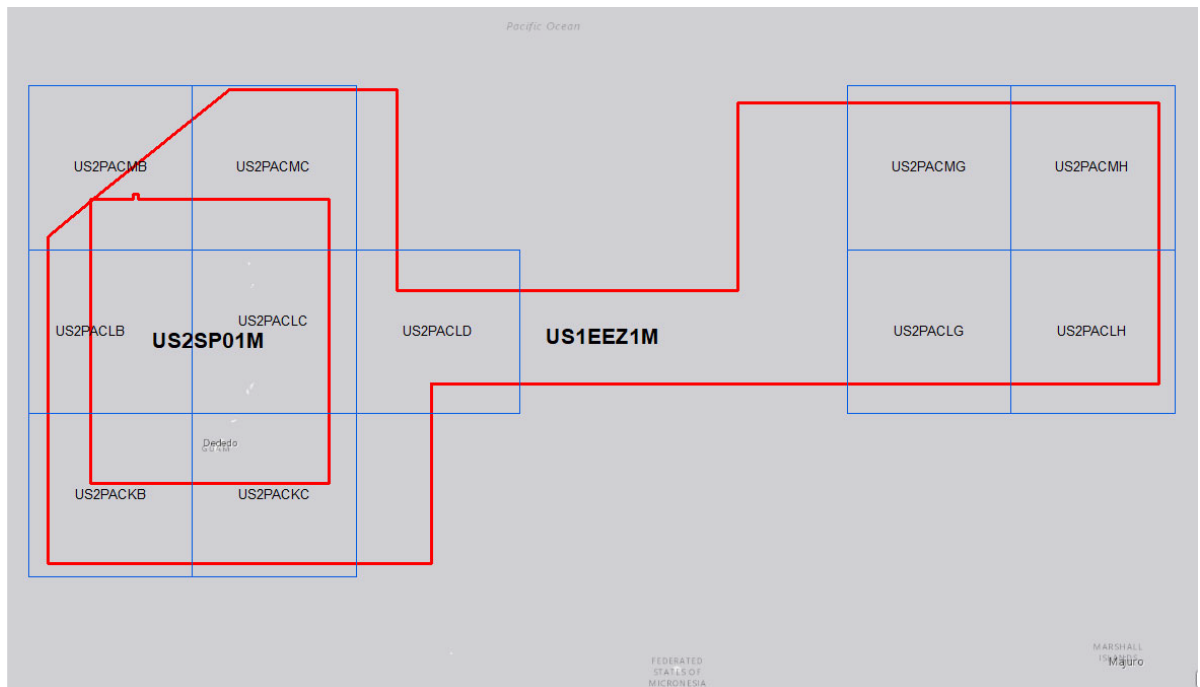


Figure3: US current ENCs (outlined in red) with planned Nav Purpose 2 reschemed ENCs (outlined in blue).



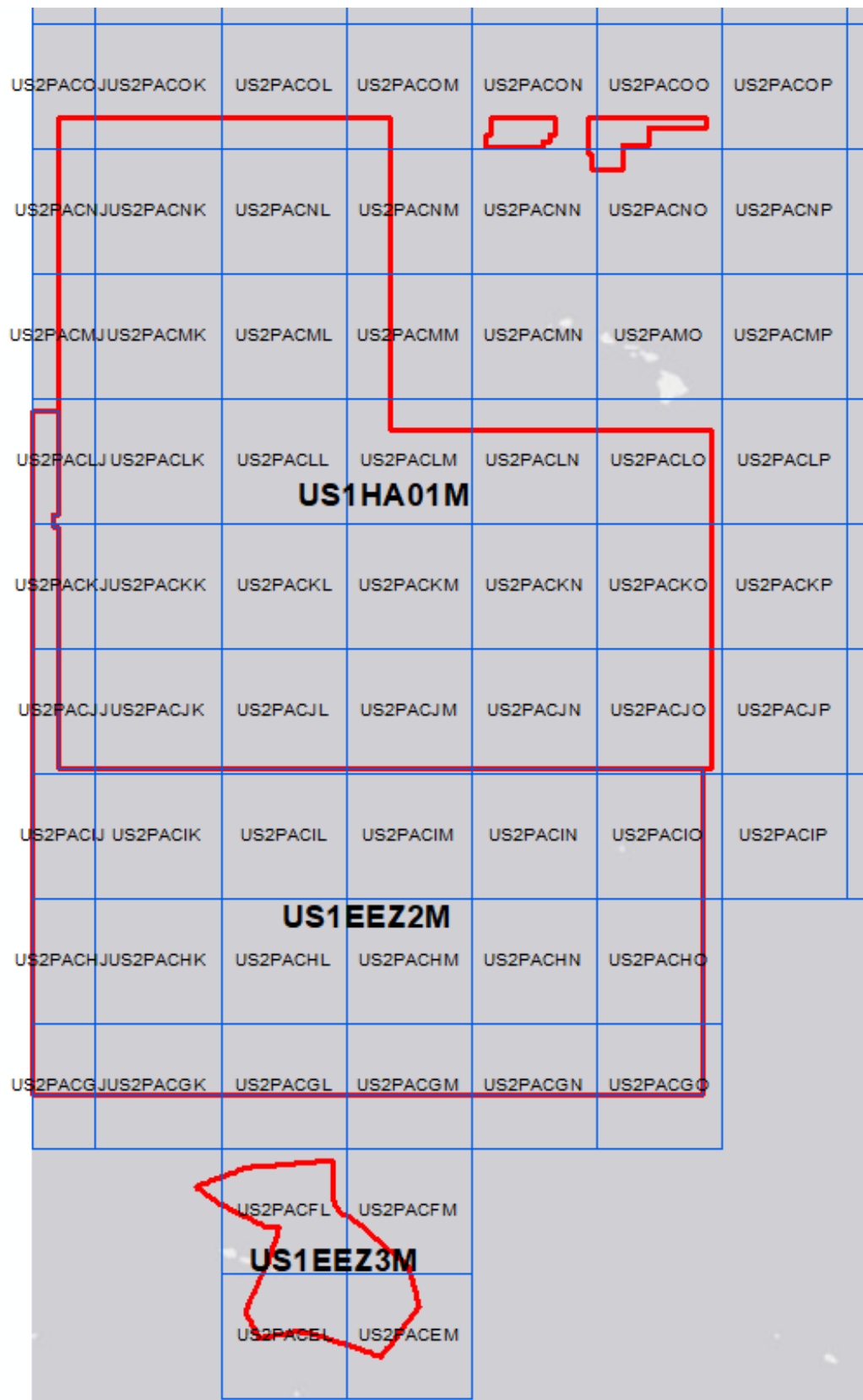


Figure 4: US current ENCs (outlined in red) with planned Nav Purpose 2 rescheduled ENCs (outlined in blue)



## AHO

A review is currently underway regarding future requirements for INT paper nautical charts. A number of INT charts have been identified as suitable for withdrawal without replacement. The intention is that, for most areas, coverage will remain available at 1:3.5M only. One 1:10M and one 1:1.5M chart are likely to remain from within the existing portfolio. The intention is that remaining INT paper charts will be the minimum necessary to:

- i. Facilitate route planning and monitoring in areas not fully covered by the coastal series (e.g. offshore reefs, neighbouring countries and Antarctica).
- ii. Display maritime claims (EEZ and Continental Shelf limits).

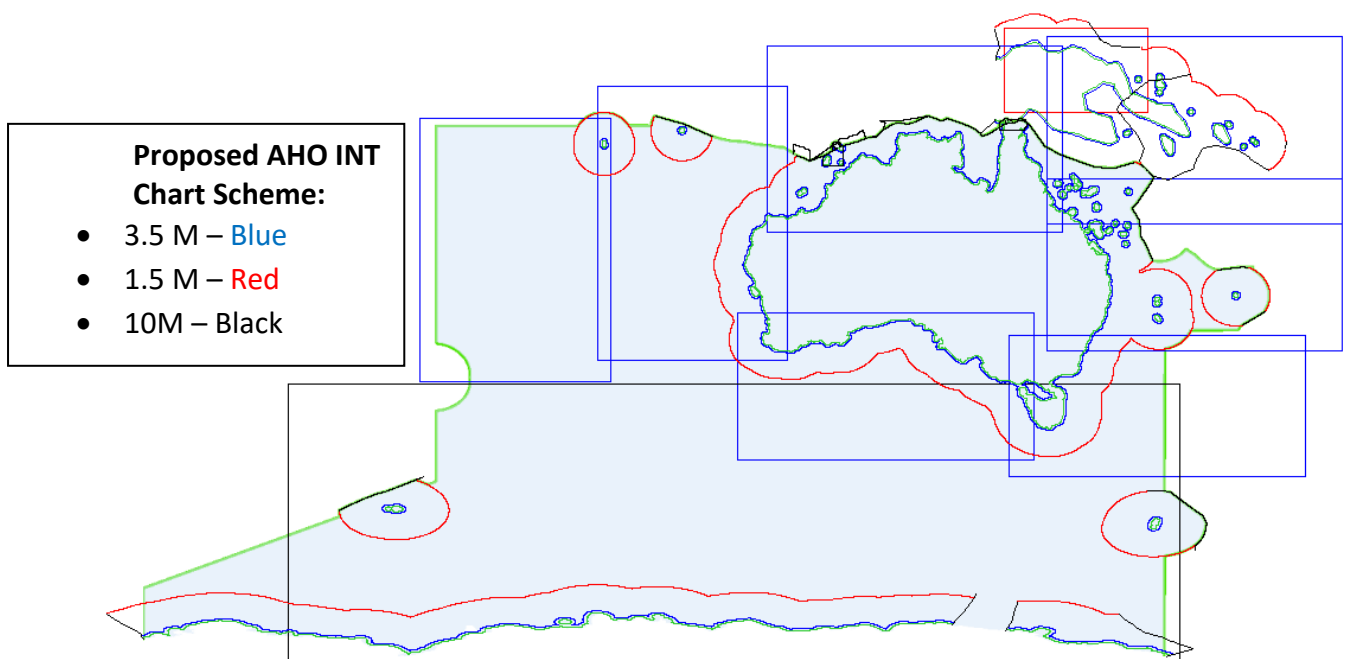
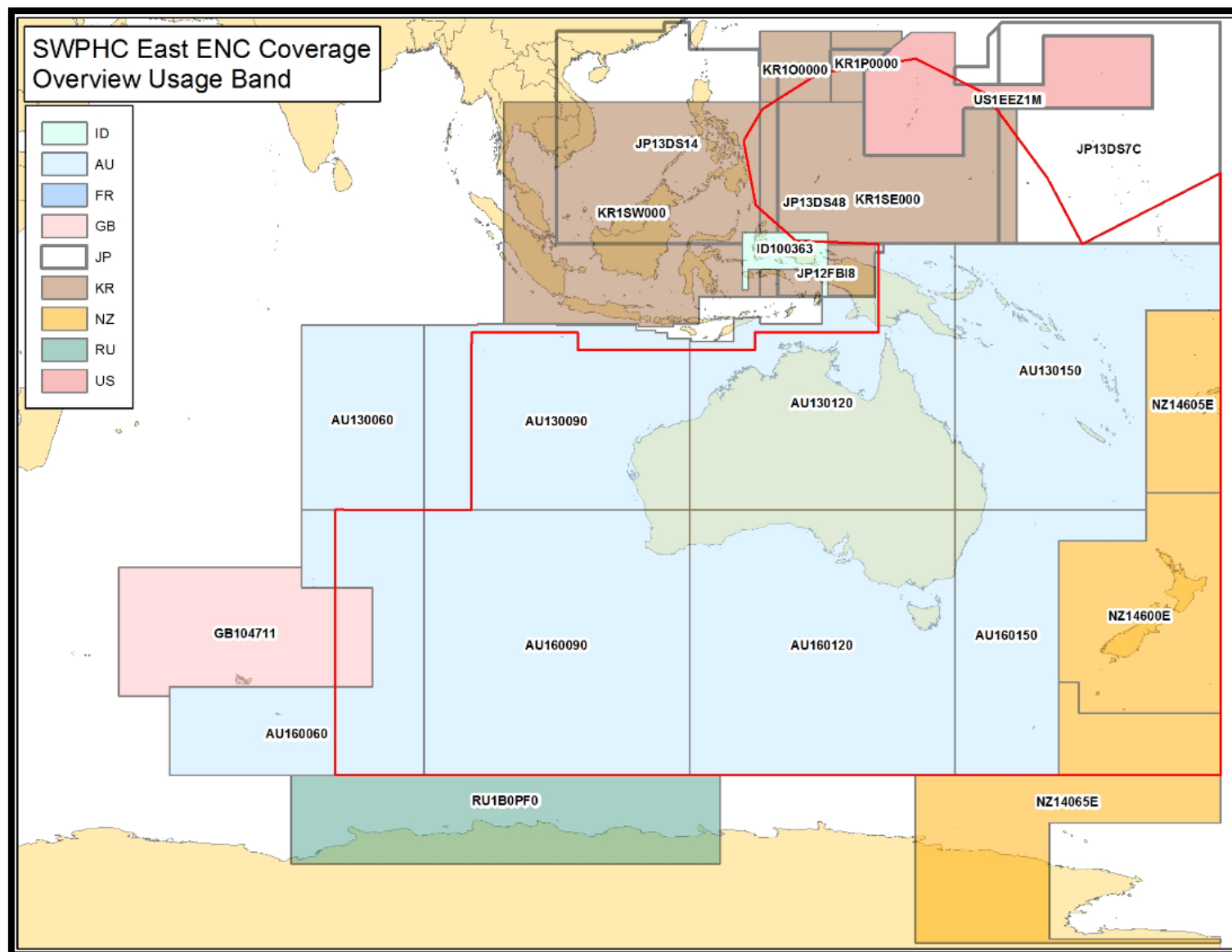
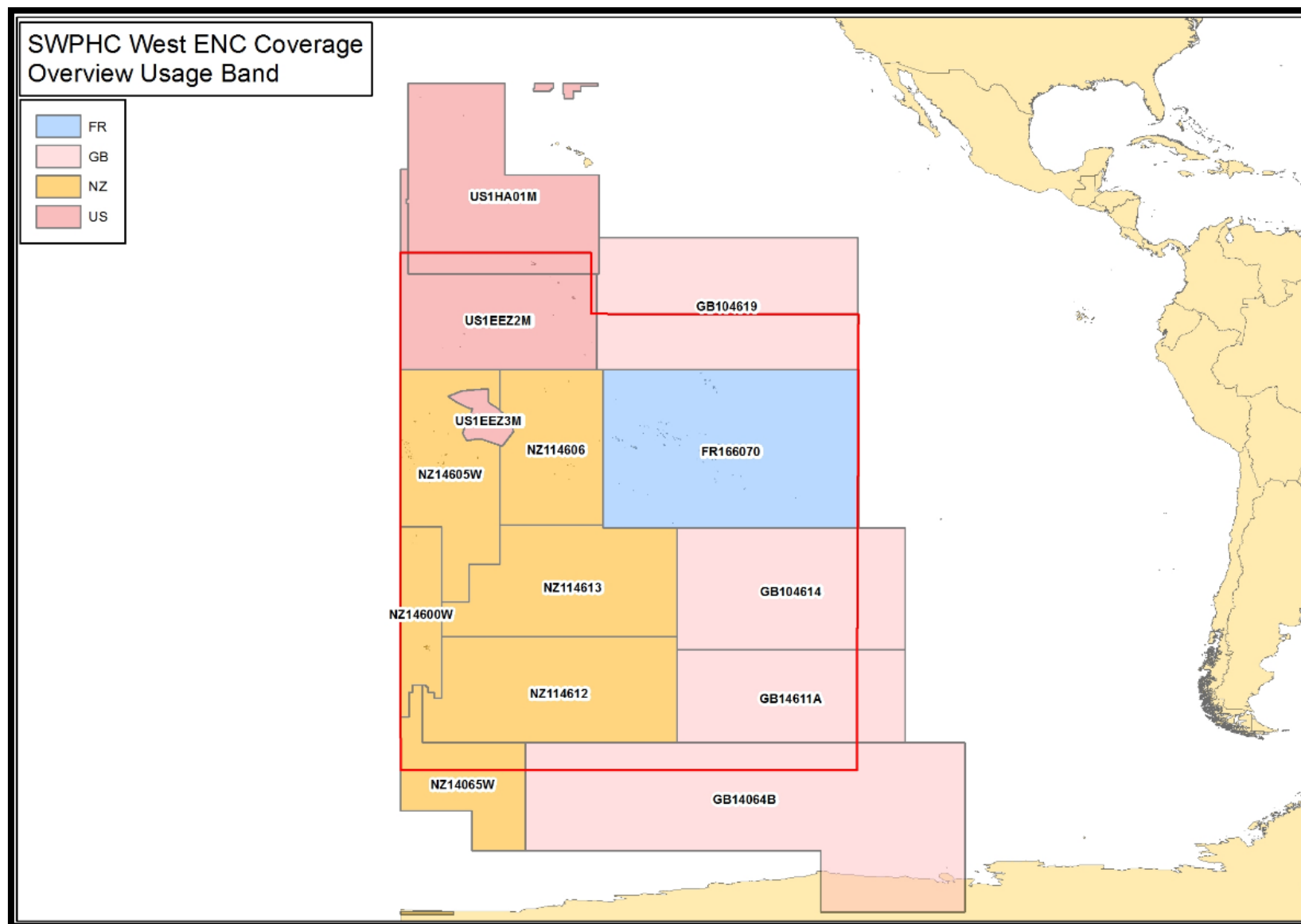


Figure 5: Proposed AUS INT paper chart reschemed.

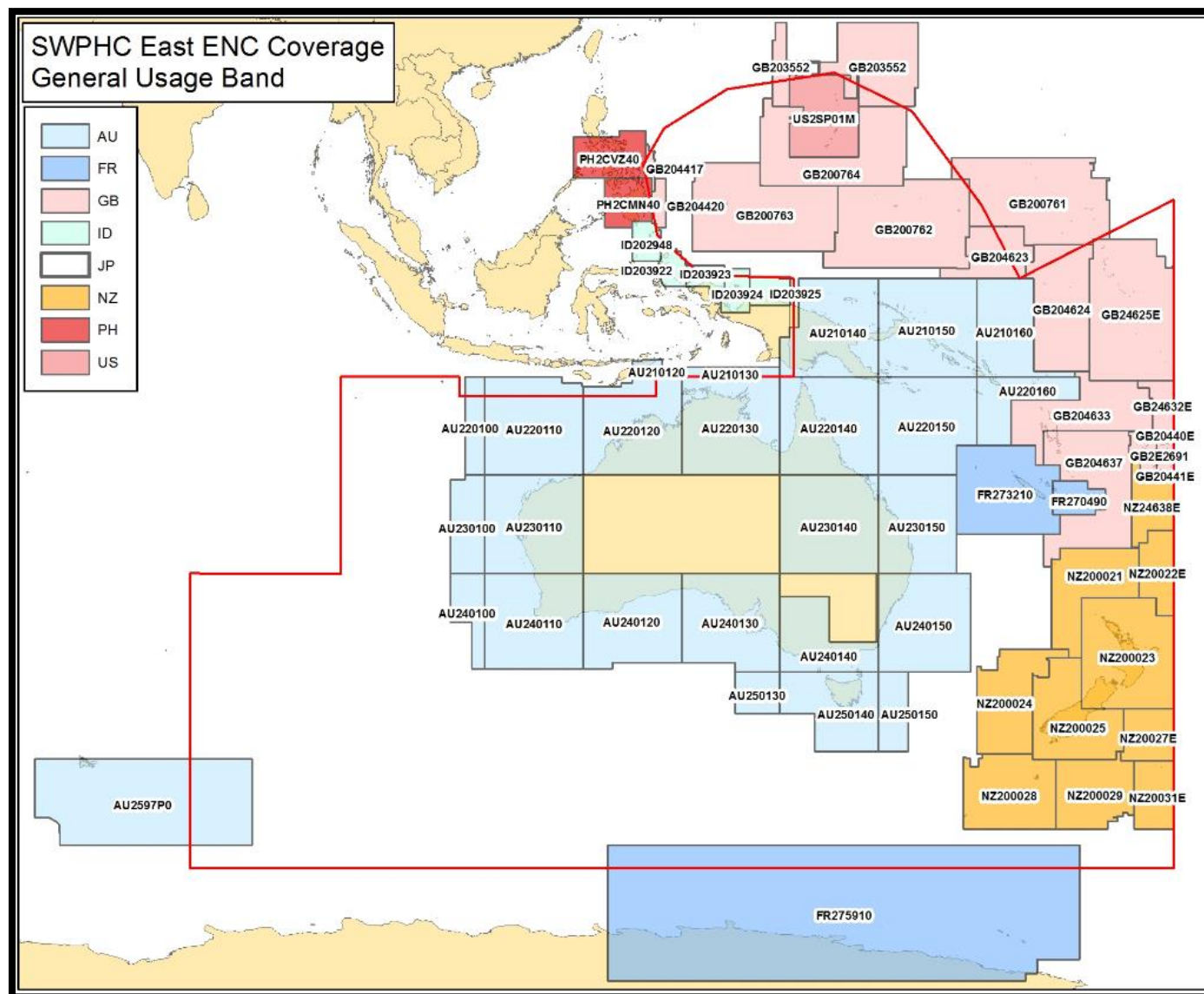
## Current ENC – Nav Purpose 1 - Overview (East)



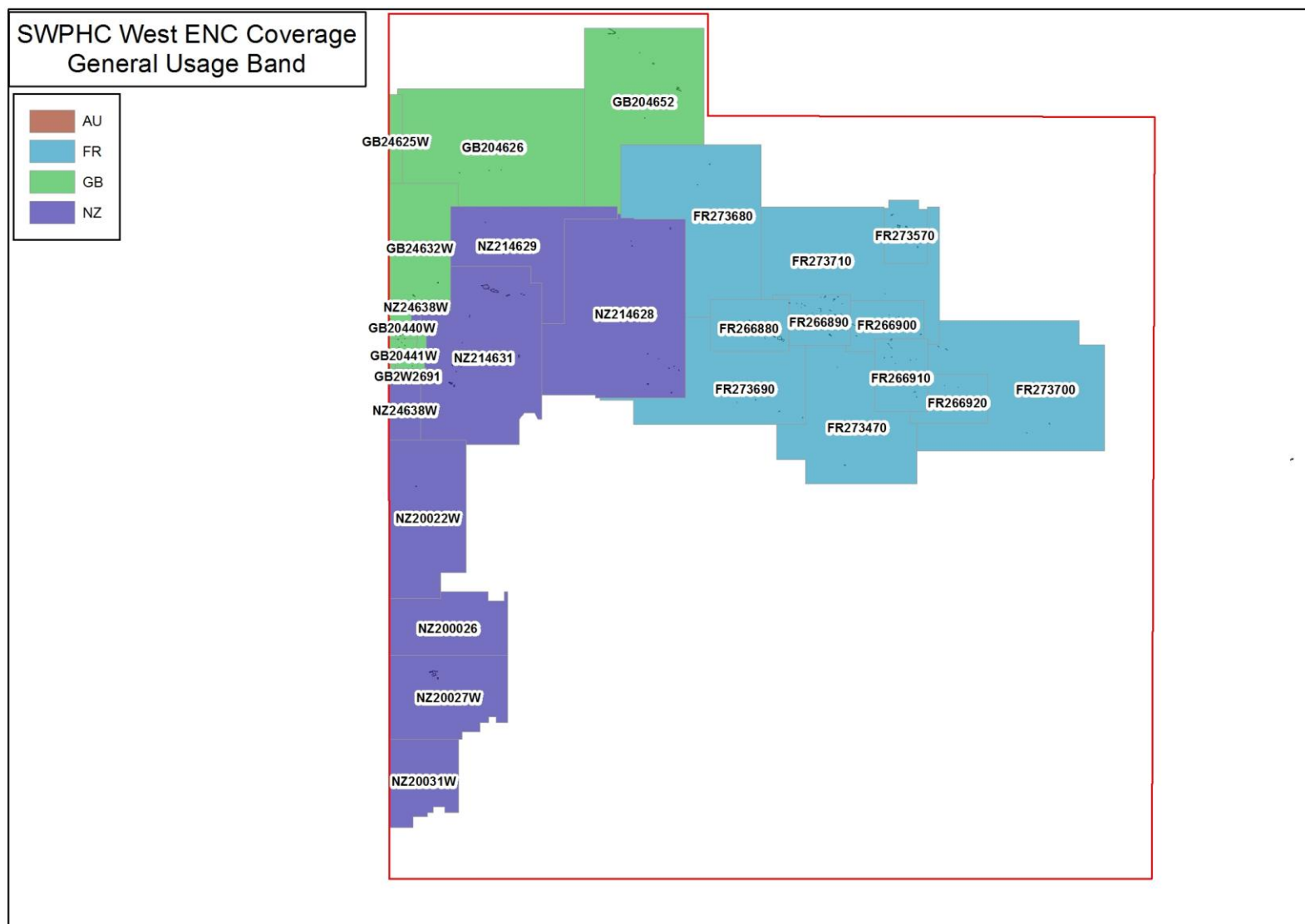
## Current ENC – Nav Purpose 1 - Overview (West)



## Current ENC – Nav Purpose 2 - General (East)



## Current ENC – Nav Purpose 2 - General (West)



[illegible]

## Overlaps of Navigation Purpose 1 and 2 ENC cells in SWP

- The following is an extract from a report received from IC-ENC regarding overlaps of ENC in the SWP. Further details can be provided by contacting the ICCWG Chair.

IC-ENC REGIONAL HYDROGRAPHIC COMMISSION OVERLAP REPORT - SOUTH WEST PACIFIC RHC - JANUARY 2020																			
STATUS	RENC Membership	RHC	ENC 1	ENC 2	Usage Band	ENC 1 Scale	ENC 2 Scale	ENC 1 Version	ENC 2 Version	Overlap extent (Kmxkm) (m/square NM)	Content difference	Geog. Location	Shipping density	Size	Scale	Route patterns	ECDIS	Overall Severity of Risk	Justification
LIVE	IC-ENC	SWPHC/HCA	RU1B0PF0	AU160060	1	3000000	3500000	1 (0)	3 (1)	840Km x 558Km 135600 sq. NM	LOW	LOW	LOW	LOW	LOW	LOW	MEDIUM	LOW	Overlap is located in the Antarctica, it charts very deep waters. There is a 119m shoal depth which is captured on AU160000 which is not captured on RU1B0PF0. Little traffic as expected.
LIVE	IC-ENC	SWPHC/HCA	RU1B0PF0	AU160090	1	3000000	3500000	1 (0)	3 (1)	560Km x 1700Km 273008 sq. NM	LOW	LOW	LOW	LOW	LOW	LOW	MEDIUM	LOW	Overlap is located in the Antarctica, it charts very deep waters. Little traffic as expected.
LIVE	IC-ENC	SWPHC/HCA	RU1B0PF0	AU160120	1	3000000	3500000	1 (0)	3 (4)	560Km x 195Km 31605 sq. NM	LOW	LOW	LOW	LOW	LOW	LOW	MEDIUM	LOW	Overlap is located in the Antarctica, it charts very deep waters. Little traffic as expected.
LIVE	IC-ENC - NON RENC	EAHC/SWPHC	US2SP01M	GB200764	2	931650	1500000	17 (0)	4 (0)	147Km x 177Km	UNABLE	LOW	LOW	LOW	LOW	LOW	UNABLE	LOW (U)	Overlaps are in very deep, little trafficked water.
LIVE	IC-ENC - NON RENC	EAHC/SWPHC	US2SP01M	GB203552	2	931650	500000	17 (0)	2 (0)	132Km x 263Km	UNABLE	LOW	LOW	LOW	LOW	LOW	UNABLE	LOW (U)	Overlaps are in very deep, little trafficked water.

## SWPHC16 Actions

SWPHC16 - Action item 15 – to update the ToRs and Procedures of SWPHC ICCWG based on latest edition of S-11 Part A Edition 3.1.0 (2018).

Terms of Reference and Rules of Procedure for SWPHC ICCWG were updated based on latest edition of S-11 Part A and uploaded to IHO on the 9<sup>th</sup> April 2019.



## Engagement with Non Producer Nations in SWP

Within the South West Pacific, the Producer Nations of New Zealand, UK, France and Australia have reported good working relationships with the Hydrographic Offices / National Maritime jurisdictions and/or Governments of the countries they chart.

Australia attends the annual Papua New Guinea National Maritime Safety Authority (PNG NMSA) planning meeting to discuss with PNG NMSA and Port and Shipping Company representatives their charting requirements and priorities. Australia has initiated a similar arrangement with Solomon Islands to discuss Charting priorities and survey requirements on an annual basis and attended meetings with SIMA in September 2019.

SWPHC ICCWG coordinator attended workshop of charting region coordinators in Stockholm, Sweden on the 4<sup>th</sup> November 2019. Agenda included discussing best practices, issues and experiences in being Chart coordinator. Practical demonstrations of the new INTtoGIS II tool were presented along with transition plan.

## Adherence to WEND principles

ENCs are distributed worldwide via the following mechanisms:

Producer nation	Mechanism
France	PRIMAR RENC
Australia	IC-ENC RENC
New Zealand	IC-ENC RENC
UK	IC-ENC RENC
US	IC-ENC RENC

## Recommendations for discussion at SWPHC 17

1. Members of the SWPHC note this report.