

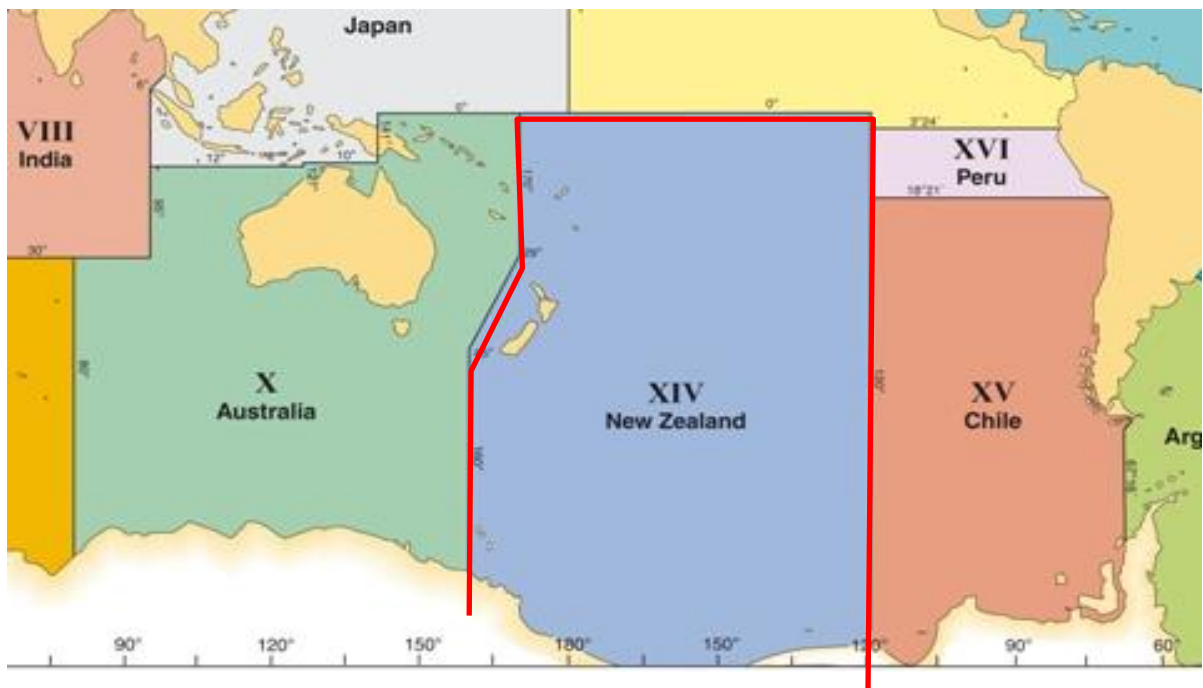
MSI in NAVAREA XIV

Submitted by New Zealand/NAVAREA XIV Coordinator

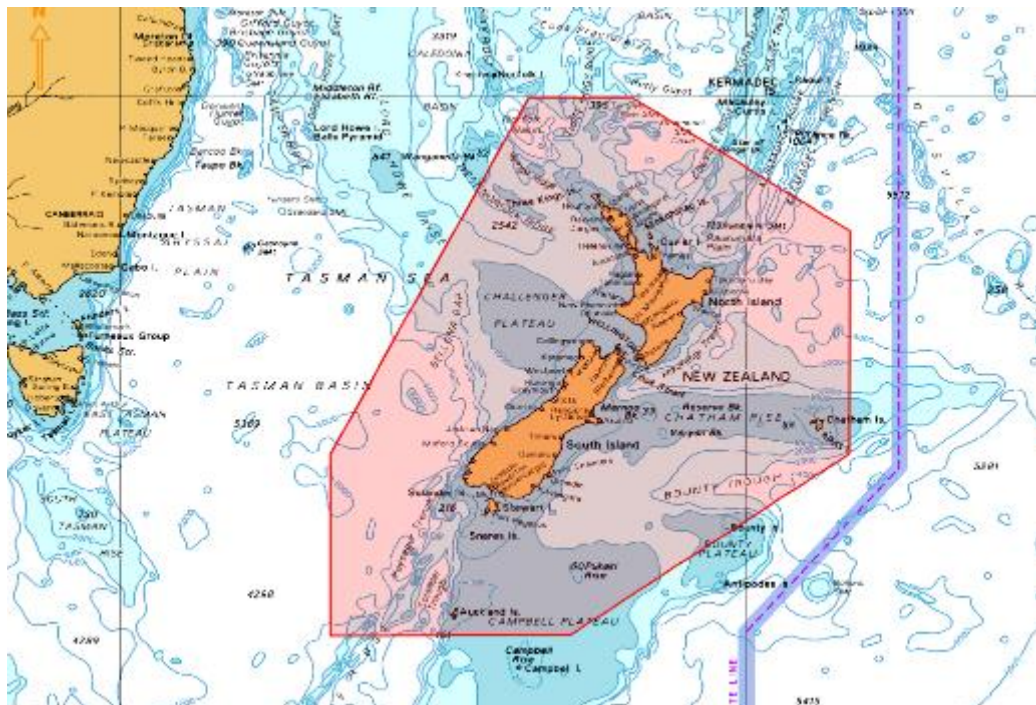
1. Background:

The limits of NAVAREA XIV are given as:

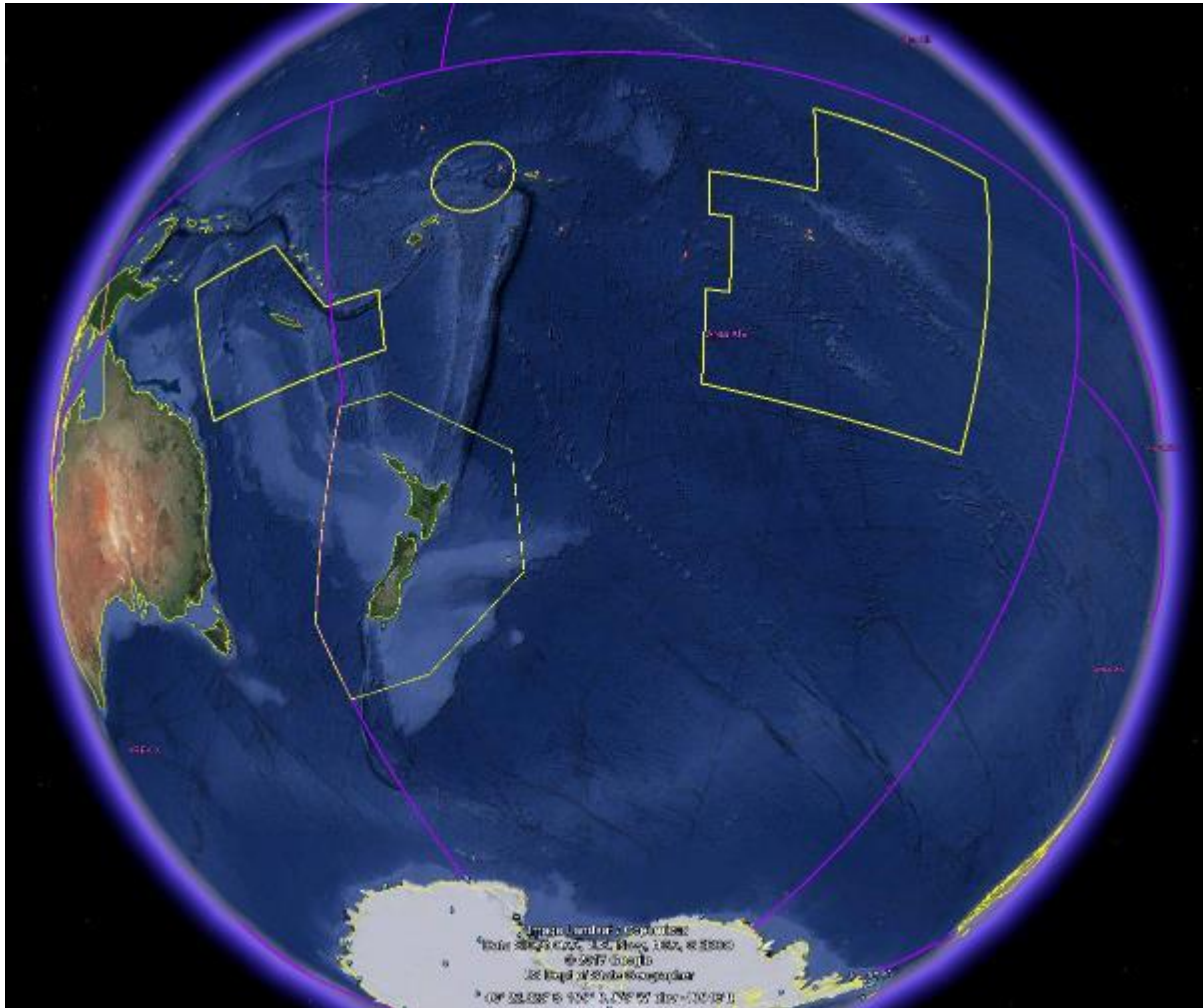
69° 37'S, 160° 00'E (Antarctic coast) to
45° 00'S, 160° 00'E to
29° 00'S, 170° 00'E to
00° 00'N, 170° 00'E to
00° 00'N, 120° 00'W to
73° 50'S, 120° 00'W (Antarctic coast)



New Zealand Coastal Warning Area 'Z' is depicted below.



NAVAREA XIV with all Coastal Warning Areas depicted below.



NAVAREA XIV and New Zealand Coastal Warnings are broadcast via:

Taupo Maritime Radio ZLM (Radio Telephony) at the first scheduled time following receipt and then at the scheduled times as per ALRS Vol 3(2), 2017/2018 Edition whilst the warnings are in force or until they have been promulgated by other means; and

EGC SafetyNET II system via the Pacific Ocean Region (POR) and Atlantic Ocean Region – West (AOR-W) satellites, through the Inmarsat Maritime Safety Servers for broadcast to Inmarsat C and Mini C via the Network Control Station (NCS) and to Fleet Safety via the Broadband Global Area Network Satellite Access Station (BGAN SAS). Warnings broadcast on receipt and scheduled at 0900 and 2100 UTC.

The warnings are broadcast and monitored by Taupo Maritime Radio through a Mobile Earth Station (MES). The Australian Maritime Safety Authority (AMSA) assists New Zealand in monitoring repeat EGC transmissions via an EGC supervisory system. Transmitted NAVAREA XIV and New Zealand Coastal Navigation Warnings are emailed to Taupo Maritime Radio, where the Coastal Warnings are checked, and NAVAREA XIV warnings are forwarded to the NAVAREA XIV Coordinator.

NAVAREA XIV Report to SWPHC 17

Operational Points of Contact for National Co-ordinators within the NAVAREA

COUNTRY	INSTITUTION	TELEPHONE	FACSIMILE	EMAIL
Cook Islands	Ministry of Transport	+682 74530		saungaki.rasmussen@cookislands.gov.ck
French Polynesia	JRCC Tahiti	+689 405 41616	+689 404 23915	contact@jrcc.pf
Fiji	Maritime Safety Authority Fiji	+679 331 5266	+679 331 3127	msi@msaf.com.fj
Kiribati	Ministry of Information, Communications, Transport & Tourism Development	(W) +686 74026003 Ext 232 (M) +686 73022727		eritaia.tauro@mcttd.gov.ki
New Caledonia	MRCC New Caledonia	+687 292121	+687 292 303	operations@mrcc.nc
New Zealand	RCCNZ	+64 4 577 8030	+64 4 577 8038	rccnz@maritimenz.govt.nz
Niue	Ministry of Transport	+683 888 6983		lynsey.talagi@mail.gov.nu
Samoa	Ministry of Works, Transport & Infrastructure	(W) +685 22141 (M) +685 770 7794	+685 22671	hoe.viali@mwti.gov.ws anastacia.amoa@mwti.gov.ws tapaga.collins@mwti.gov.ws
Tonga, Kingdom of	Ministry of Infrastructure, Marine & Ports Division	+676 22 555	+676 42 467	sioeli.fifita@moi.gov.to
Tuvalu		+688 20055		taasi.pittoi@gmail.com
Wallis & Futuna	MRCC New Caledonia	+687 292121	+687 292 303	operations@mrcc.nc

2. **Comments:**

In 2018, the NAVAREA XIV Coordinator initiated six monthly communications checks with the nine National Coordinators (outside of New Zealand) in an effort to improve communications and ensure contact details are correct. To date the response rate has been 100%. During 2019 responses to these checks identified changes in contact details for seven National Coordinators.

NAVAREA XIV EGC Messages

2017	2018	2019
145	190	161

Subjects of NAVAREA XIV Warnings included casualties to AtoNs, pipe and cable laying operations, rocket launching and space debris, tsunami threats, dredging operations, drifting hazards, shoals located, wrecks located, drilling operations, gunnery exercises and submarine volcanic activity.

NAVAREA XIV Report to SWPHC 17

MSI Received from Coastal States within NAVAREA XIV

Coastal State/Country	Number of MSI messages	Topics/Subjects of messages	MSI Courses Attended
Cook Islands	3	Wreck, AtoNs	2010, 2014, 2016, 2018
Fiji	50	AtoN, Cable laying ops, Pipeline installations, Wrecks	2010, 2014, 2016, 2018
French Polynesia	36	Military exercises, Space debris, Drifting Hazard, Tow, AtoNs	2010, 2014, 2016, 2018
New Caledonia	16	Military exercises, FADs, Drifting Hazard, Grounding	2010, 2014, 2016, 2018
Niue	3	AtoNs	2016, 2018
Samoa	1	Cable Laying	2016, 2018
Tonga	2	Wreck, Volcanic Activity	2016, 2018
Tuvalu	0		2016, 2018
Wallis & Futuna	Covered by New Caledonia		Covered by New Caledonia
Kiribati	1	Wreck	2016, 2018

3. **National reports**

Templates sent to 10 National Coordinators in NAVAREA XIV. 10 completed reports received and appended to this report.

4. NAVTEX Coverage:

N/A

5. Operational Issues:

NAVAREA XIV

Following the Inmarsat I3-I4 migration, as noted in the NAVAREA XIV report to SWPHC 16, NAVAREA XIV initiated a monitoring model that utilised ships within the affected area to confirm reception of MSI, report any issues and provide a copy of MSI received. The model has been in effect for over 12 months, with the number of ships confirming correct reception of MSI providing the NAVAREA XIV Coordinator with a high level of confidence that our MSI is being received as delivered.

Feedback from some ships now indicates that this daily process has become onerous. As such, the model has been modified as follows:

Following every MSI broadcast

- All broadcast transmissions are monitored via the SafetyNET II interface, which provides system confirmation of message status and text display of the message sent. Monitoring of broadcast reception via the POR satellite continues via the existing INM-C EGC receiver.

Once per month Quality Assurance Check

- A ship in the eastern part of NAVAREA XIV, under the AOR-W footprint is identified via Satellite AIS (S-AIS), requested to confirm message reception and provide a copy of MSI received.

New Recognised GMDSS Mobile Satellite Service Providers

Until recently, the Inmarsat C system was the sole recognised GMDSS mobile satellite service for the shore-ship delivery of MSI and SAR Information. Following IMO approval, these GMDSS functions are now available via the Inmarsat Fleet Safety system (regional coverage presently but global coverage planned), and will be available via the Iridium SafetyCast service.

The BeiDou Message Service System (BDMSS) is undergoing assessment by IMSO for consideration as a recognised GMDSS mobile satellite service provider. The BDMSS is proposed as a regional service for the Asian and Western Pacific Ocean regions at this stage.

The NAVAREA XIV Coordinator is broadcasting all NAVAREA and New Zealand Coastal Warnings via Inmarsat Fleet Safety, and will commence Initial Operating Capability (IOC) testing with Iridium once their systems are available.

All certified¹ NAVAREA Coordinators, and National Coordinators providing MSI to Coastal Warning Areas via recognised satellite service providers, and intending to sign service agreements with Iridium LLC will need to register² with Iridium and participate in the initial operational capability phase. As each authority reports successful completion of all checks and procedures to the Chair of the IMO EGC Coordinating Panel, they will be issued individual Full Operational Certificates and can declare to IMO that the Iridium SafetyCast service is operational in their area.

National Coordinators

As per National Coordinator reports.

6. Capacity Building:

In conjunction with the Maritime New Zealand (MNZ) and Ministry of Foreign Affairs and Trade (MFAT) the Rescue Coordination Centre New Zealand (RCCNZ) continues to deliver Search and Rescue and Maritime Safety and Prevention Training across the Pacific through the Pacific Maritime Safety Programme (PMSP). The training being delivered by New Zealand is part of a larger Pacific Community (SPC) capacity building program with a long term view to improve SAR governance, SAR coordination and SAR Response proficiency in the region.

7. Other Activities:

The NAVAREA XIV Coordinator attends the annual WNWNS SC meeting, and this year attended part of the IMO NCSR7 and the IHO DRWG18, and is a member of the WNWNS EGC API WG and S-124NW PT.

8. NAVAREA Website:

NAVAREA XIV warnings in force: www.maritimenz.govt.nz/navarea

During 2019 the NAVAREA XIV web page received 26,236 page views.

The RCCNZ 24/7 Operations Room now has change-control access to the NAVAREA XIV website, allowing updates in near-real time. The date and time of the last update is displayed on the web site.

¹ Information providers (Maritime Safety Information Providers and SAR Information Providers) require certification from the IMO EGC Coordinating Panel.

² Once a certified information provider has signed a service agreement with a relevant satellite service provider, the information provider becomes “registered” to provide information via that satellite service provider.

9. NAVAREA Contact Information:

NAVAREA XIV Coordinator
Maritime New Zealand
RCCNZ
41 Percy Cameron Street, Avalon Studios Level 1
PO Box 30050
LOWER HUTT 5040
New Zealand
Tel: +64 4 577 8030 (24 hours)
FAX: +64 4 577 8038 (24 hours)
E-mail rccnz@maritimenz.govt.nz (24 hours)
Website: <http://www.maritimenz.govt.nz/navarea>

10. Actions requested:

SWPHC to note the information provided.

11. Synopsis:

This report highlights the MSI activities for the year 2019. The introduction of new recognised GMDSS satellite service providers now, and intended for the future will bring both challenges and opportunities that MSI and SAR Information Providers will need to address.

New Zealand is actively involved with a number of IMO and IHO Sub-Committees and Working Groups, and capacity building in the SWP region for MSI, charting and hydrography through the Regional Hydrographic Commission and the NZ Aid Programme, PRNI, and maritime safety and SAR through the Pacific Community (SPC) and PMSP. The NAVAREA XIV Coordinator is regularly engaging with the National Coordinators in NAVAREA XIV in an effort to improve communications and ensure contact details are correct.

National Reports to Regional Hydrographic Commissions

Regional Hydrographic Commissions (RHCs) are intended to provide, under the auspices of the International Hydrographic Organization regional, coordination with regard to nautical information, hydrographic surveys, production of nautical charts and documents, training, technical cooperation and hydrographic capacity building projects.

The RHCs are required to report to the International Hydrographic Conference on activities, hydrographic capacity and requirements within their region. They are also required to submit an annual report to the International Hydrographic Bureau indicating progress made against the key targets in the IHO Work Programme. To assist in the RHC gathering information on the activities within their area of responsibility a number of reports are required from National Organizations.

Details of these reporting requirements are available in IHO Resolution 2/1997 as amended which is available from the IHO Website;

http://iho.int/iho_pubs/misc/M3-E-JAN13.pdf

Part of the reporting requirements relate to Maritime Safety Information services. This document is provided to assist National Coordinators in capturing the required information and is based on the current approved World Wide Navigational Warning Service Template.

On completion of the form National Coordinators are requested to pass the information to the relevant NAVAREA Coordinator for their Region.

Associated NAVAREA Coordinator

(Details should be completed by NAVAREA Coordinator prior to distributing form)

NAVAREA Region	XIV
Primary Point of Contact	Dave Wilson and Conrad Reynecke
Organization	Rescue Coordination Centre New Zealand
Email Address	rccnz@maritimenz.govt.nz
Telephone No.	+64 4 5778030
Facsimile No.	+64 4 5778038
Postal Address	Rescue Coordination Centre New Zealand 41 Percy Cameron Street, Avalon Studios Level 1 PO Box 30050, Lower Hutt 5040 Wellington New Zealand

[Guidance on what information to be included can be obtained by hovering the mouse over the relevant fields in the form. If additional guidance or assistance in completing the form is required then the National Coordinator should contact the relevant NAVAREA Coordinator.]

**National Maritime Safety Information
(MSI) Self Assessment**

New Zealand

RCCNZ

1. Maritime Area

New Zealand Coastal Warning Area Z is a defined polygon for the purpose of broadcasting NZ Coastal Navigation Warnings via Inmarsat SafetyNET.

The limits of the area are: 30-00S 169-30E to 30-00S 174-30E to 36-00S 175-00W to 45-00S 175-00W to 51-30S 171-30E to 51-30S 160-00E to 45-00S 160-00E

2. Operational Points of Contact for the National Coordinator

Institution/Organization	Telephone	Facsimile	Email
RCCNZ	+64 4 5778030	+64 4 5778038	rccnz@maritimenz.govt.nz

3. GMDSS Master Plan

Is plan up to date? Yes

Date of last update; Jul 2019

MSI - National Coordinator Procedures

Do you have access to IMO/IHO/WMO Joint Manual on MSI? Yes

Do you follow the suggested warning format in Joint Manual? Yes

Have you or your staff received MSI Training? Yes

Are you aware of your NAVAREA Coordinator? Yes

Do you pass MSI to NAVAREA Coordinator? Yes

Do you request NAVAREA Coordinator broadcast MSI? Yes

[Remarks about MSI - National Coordinator Procedures]

MSI Broadcast Service					
NAVTEX	SafetyNET			HF NBDP	
	NAV	MET	SAR		
<input type="checkbox"/>	<input checked="" type="checkbox"/>	<input type="checkbox"/>	<input checked="" type="checkbox"/>	<input type="checkbox"/>	<input type="checkbox"/>

Complete Section 4

Specifics of equipment used and software version with date updated

Equipment Type for Ports and Local Area	Software Version	Date of Latest Update
Sailor 6150 Mini-C	Firmware V1.07	
Thrane & Thrane easyMail	V2.02	Build 006 28/2/2013

Summary of National Maritime Safety Information Issued

2017		2018		2019	
Total	Average Elapsed Time	Total	Average Elapsed Time	Total	Average Elapsed Time
267	16 Mins	253	18 Mins	206	10 Mins

4. International SafetyNET Service

Does your Administration broadcast MSI through the International SafetyNET Service? Yes

Is it Operational now? Yes

If not indicate the expected date of operation

NAV/MET Area	Type of Information	Country	LES/LESO	Ocean Region/LES ID	MSI Coastal Warning Area ⁽¹⁾ (if applicable)	Broadcast Schedule (UTC)	Status of Implementation
	NAV ⁽²⁾	* NZ	Burum	POR/AOR-W	Z	0900 & 2100	Operational
	MET ⁽³⁾	**					
	SAR ⁽⁴⁾	NZ	Burum	POR/AOR-W			Operational

(1) Provide a diagram showing limits of Coastal Warning Areas, including B1 Codes

(2) NAV = Navigational Warnings

(3) MET = Meteorological Warnings

(4) SAR = Search and Rescue Alerts

* - NAVAREA Coordinator responsible for the Area

** - The issuing service nominated by WMO for METAREA services, responsible for the area

5. NAVTEX Coverage

New Zealand does not broadcast coastal warnings via NAVTEX.

NAVTEX Coast Station	Frequency	Position of Antenna	Range (NM)	B1 Character	Transmission Times	Language

6. HF Narrow Band Direct Printing (NBDP) MSI Broadcast Service

Does your Administration broadcast MSI through HF NBDP?

No

Is it Operational now?

If not indicate the expected date of operation

Country	NBDP Coast Station	Position	Frequency Band	Schedule (UTC)	Status
			4MHz (4210KHz)		
			6MHz (6425KHz)		
			8MHz (8416.5KHz)		
			12MHz (12579KHz)		
			16MHz (16806.5KHz)		
			19MHz (19680.5KHz)		
			22MHz (22376 KHz)		
			26MHz (26100.5 KHz)		

7. Does your Administration broadcast MSI through other means?

New Zealand broadcasts MSI via all recognised GMDSS mobile satellite service providers (currently via Inmarsat SafetyNET II to Inmarsat C and Fleet Safety terminals) and via VHF, MF and HF voice.

8. Operational Issues

New Zealand will commencing Initial Operating Capability (IOC) testing with Iridium once their systems are available.

9. Contingency Planning

Maritime New Zealand (Kordia/Taupo Maritime Radio) uses the Inmarsat SafetyNET II system to broadcast Navigational Warnings and RescueNET to broadcast SAR Information. The versatility of using web portals, in addition to Kordia having back-up servers, reduces the risk of a New Zealand-based single point of failure. In the event of a total system failure at Kordia, web access is available via RCC New Zealand which also has back-up servers and multiple redundant systems in place

10. Capacity Building

NZ National Coordinator provides instructors to every MSI Capacity Building Course in the SWP region. Training for NZ National Coordinator staff is conducted in-house.

11. Other Activities

RCCNZ attends WWNWS, NCSR and attended DRWG 18 in January.

12. National Maritime Website

www.maritimenz.govt.nz/navarea

13. Recommendations

None

14. Summary

This self-assessment report highlights the MSI activities for the year 2019. NZ is actively involved with a number of IMO and IHO Sub-Committees and Working Groups; and capacity building in the South West Pacific region.

15. Remarks/Additional Information

None

16. Attachments

--

**National Maritime Safety Information
(MSI) Self Assessment**

FRANCE - New Caledonia

SHOM - MRCC Nouméa

1. Maritime Area

Two maritime areas:

First one is "N" with geographic coordinates as follow

- 14°00.00 S / 156°00.00 E

- 14°00.00 S / 163°30.00 E

- 21°30.00 S / 169°30.00 E

- 21°30.00 S / 174°30.00 E

2. Operational Points of Contact for the National Coordinator

Institution/Organization	Telephone	Facsimile	Email
MRCC New Caledonia	+ 687 29 23 32		operations@mrcc.nc
SHOM	+ 33 2 56 31 23 03		alain.paire@shom.fr

3. GMDSS Master Plan

Is plan up to date? Yes

Date of last update;

MSI - National Coordinator Procedures

Do you have access to IMO/IHO/WMO Joint Manual on MSI? Yes

Do you follow the suggested warning format in Joint Manual? Yes

Have you or your staff received MSI Training? Yes

Are you aware of your NAVAREA Coordinator? Yes

Do you pass MSI to NAVAREA Coordinator? Yes

Do you request NAVAREA Coordinator broadcast MSI? Yes

[Remarks about MSI - National Coordinator Procedures]

MSI Broadcast Service				
NAVTEX	SafetyNET			HF NBDP
	NAV	MET	SAR	
<input type="checkbox"/>	<input checked="" type="checkbox"/>	<input type="checkbox"/>	<input checked="" type="checkbox"/>	<input type="checkbox"/>

Specifics of equipment used and software version with date updated

Equipment Type for Ports and Local Area	Software Version	Date of Latest Update
INMARSAT-C GMDSS SYSTEM (SAILOR 6110)		
INM-C MESSAGE TERMINAL (SAILOR 6006)	1.03	
INM-C GMDSS TERMINAL (SAILOR 3027)	1.05	
INM-C PSU & CHARGER (SAILOR 6081)	1.00	

Summary of National Maritime Safety Information Issued

Year -2		2018		2019	
Total	Average Elapsed Time	Total	Average Elapsed Time	Total	Average Elapsed Time
196	<input type="text"/> Mins	202	<input type="text"/> Mins	176	<input type="text"/> Mins

4. International SafetyNET Service

Does your Administration broadcast MSI through the International SafetyNET Service?

Is it Operational now?

If not indicate the expected date of operation

NAV/MET Area	Type of Information	Country	LES/LESO	Ocean Region/LES ID	MSI Coastal Warning Area ⁽¹⁾ (if applicable)	Broadcast Schedule (UTC)	Status of Implementation
X / XIV	NAV ⁽²⁾	AUSTRALIA / NZ	AUSSAGUEL	POR	N + D	0140, 1340	Operational
	MET ⁽³⁾	**					
X / XIV	SAR ⁽⁴⁾	AUSTRALIA / NZ	AUSSAGUEL	POR	N + D		Operational

(1) Provide a diagram showing limits of Coastal Warning Areas, including B1 Codes

(2) NAV = Navigational Warnings

(3) MET = Meteorological Warnings

(4) SAR = Search and Rescue Alerts

* - NAVAREA Coordinator responsible for the Area ** - The issuing service nominated by WMO for METAREA services, responsible for the area

5. NAVTEX Coverage

NIL

NAVTEX Coast Station	Frequency	Position of Antenna	Range (NM)	B1 Character	Transmission Times	Language

6. HF Narrow Band Direct Printing (NBDP) MSI Broadcast Service

Does your Administration broadcast MSI through HF NBDP?

No

Is it Operational now? No

If not indicate the expected date of operation

Country	NBDP Coast Station	Position	Frequency Band	Schedule (UTC)	Status
			4MHz (4210KHz)		
			6MHz (6425KHz)		
			8MHz (8416.5KHz)		
			12MHz (12579KHz)		
			16MHz (16806.5KHz)		
			19MHz (19680.5KHz)		
			22MHz (22376 KHz)		
			26MHz (26100.5 KHz)		

7. Does your Administration broadcast MSI through other means?

Yes, we broadcast local navigational warnings by radio VHF 4 times a day.
1900-2000 / 0000-0100 / 0500-0600 / 1000-1100 (all hours in UTC).

8. Operational Issues

NIL

9. Contingency Planning

NIL

10. Capacity Building

The VHF system will be increased from 16 antennas to 17 during the 1st half of 2020 (Station Yaté - South of new caledonia)
at the end, new caledonia with loyaulty's islands will be covered by 17 stations.

11. Other Activities

[Provide details on any other relevant activities, completed, underway or planned]

12. National Maritime Website

- MRCC Nouméa website: 'www.mrcc.nc'
- National Coordinator: 'www.shom.fr'

13. Recommendations

NIL

14. Summary

NIL

15. Remarks/Additional Information

NIL

16. Attachments

NIL

**National Maritime Safety Information
(MSI) Self Assessment**

FIJI

Maritime Safety Authority of Fiji (MSAF)

1. Maritime Area

Fiji Coastal Navigational Warning area covers Fiji waters including 200 nautical miles exclusive economic zone (EEZ) of Fiji for broadcasting of navigational warnings via Coast Radio Station (CRS) on VHF/HF.

2. Operational Points of Contact for the National Coordinator

Institution/Organization	Telephone	Facsimile	Email
Maritime Safety Authority of Fiji (MSAF)	+679 3315 266	+679 3313 127	skumar@msaf.com.fj
			msi@msaf.com.fj

3. GMDSS Master Plan

Is plan up to date? No

Date of last update;

MSI - National Coordinator Procedures

Do you have access to IMO/IHO/WMO Joint Manual on MSI? Yes

Do you follow the suggested warning format in Joint Manual? Yes

Have you or your staff received MSI Training? Yes

Are you aware of your NAVAREA Coordinator? Yes

Do you pass MSI to NAVAREA Coordinator? Yes

Do you request NAVAREA Coordinator broadcast MSI? Yes

[Remarks about MSI - National Coordinator Procedures]

MSI Broadcast Service					
NAVTEX	SafetyNET			HF NBDP	
	NAV	MET	SAR		
<input type="checkbox"/>	<input checked="" type="checkbox"/>	<input type="checkbox"/>	<input type="checkbox"/>	<input type="checkbox"/>	<input type="checkbox"/>

Complete Section 4

Specifics of equipment used and software version with date updated

Equipment Type for Ports and Local Area	Software Version	Date of Latest Update
Maritime VHF & HF Radio		

Summary of National Maritime Safety Information Issued

2017		2018		2019	
Total	Average Elapsed Time	Total	Average Elapsed Time	Total	Average Elapsed Time
70	<input type="text"/> Mins	64	<input type="text"/> Mins	50	<input type="text"/> Mins

4. International SafetyNET Service

Does your Administration broadcast MSI through the International SafetyNET Service? No

Is it Operational now? No

If not indicate the expected date of operation

NAV/MET Area	Type of Information	Country	LES/LESO	Ocean Region/LES ID	MSI Coastal Warning Area ⁽¹⁾ (if applicable)	Broadcast Schedule (UTC)	Status of Implementation
	NAV ⁽²⁾	*					
	MET ⁽³⁾	**					
	SAR ⁽⁴⁾						

(1) Provide a diagram showing limits of Coastal Warning Areas, including B1 Codes

(2) NAV = Navigational Warnings

(3) MET = Meteorological Warnings

(4) SAR = Search and Rescue Alerts

* - NAVAREA Coordinator responsible for the Area ** - The issuing service nominated by WMO for METAREA services, responsible for the area

5. NAVTEX Coverage

Fiji does not broadcast MSI via NAVTEX as this is not practiced in the SWP region.

NAVTEX Coast Station	Frequency	Position of Antenna	Range (NM)	B1 Character	Transmission Times	Language

6. HF Narrow Band Direct Printing (NBDP) MSI Broadcast Service

Does your Administration broadcast MSI through HF NBDP?

No

Is it Operational now?

If not indicate the expected date of operation

Country	NBDP Coast Station	Position	Frequency Band	Schedule (UTC)	Status
			4MHz (4210KHz)		
			6MHz (6425KHz)		
			8MHz (8416.5KHz)		
			12MHz (12579KHz)		
			16MHz (16806.5KHz)		
			19MHz (19680.5KHz)		
			22MHz (22376 KHz)		
			26MHz (26100.5 KHz)		

7. Does your Administration broadcast MSI through other means?

MSAF as the competent authority disseminates MSI by e-mail in the first instance. MSI are also uploaded on the MSAF website.

Broadcasting is carried by Suva Coast Radio Station via VHF & HF daily at 0803, 1203, 1603 & 2003.

8. Operational Issues

Coverage for HF transmission is limited and inconsistent. HF equipment set used by CRS is obsolete. CRS has now been relocated to a new site with communication coverage is yet to be established. GMDSS equipment to replace the current equipment is envisaged in the next financial year.

9. Contingency Planning

MSI messages sent to the NAVAREA XIV Coordinator, RCCNZ by email. RCCNZ promulgates important messages as NAVAREA XIV Warnings on SafetyNET.

10. Capacity Building

MSAF along with the representatives of Fiji Navy Hydrographic Office have participated in the past MSI training courses in SWP region. It is recommended that such training continues.

11. Other Activities

MSAF maintains a register of 406 MHz EPIRBs that are coded with the Fiji country code 520. This serves as a record of EPIRBs installed on Fiji registered vessel and supports the two (2) Rescue Coordination Centres in search and rescue.

12. National Maritime Website

www.msaf.com.fj

13. Recommendations

It is strongly recommended that Capacity Building Fund continues its assistance in the region.

14. Summary

This self-assessment report highlights the MSI activities for the year 2019. Fiji is very actively involved in providing MSI services to the maritime industry locally including navy, port operators, marina operators, pilots, primary hydrographic charting authorities etc., for updating charts & publications.

15. Remarks/Additional Information

Average Elapsed Times mentioned in the Summary of National Maritime Safety Information Issued for the years 2017 to 2019 is approximately 30 minutes although they were not recorded.

16. Attachments

**National Maritime Safety Information
(MSI) Self Assessment
SAMOA**

Ministry of Works, Transport & Infrastructure

1. Maritime Area

Samoa Coastal Navigational Warning area covers Samoa's waters including 200 nautical miles exclusive economic zone (EEZ) of Samoa.

2. Operational Points of Contact for the National Coordinator

Institution/Organization	Telephone	Facsimile	Email
MWTI	+685 21611	+685 28688	anastacia.amoa@mwti.gov.ws
			makerita.antonio@mwti.gov.ws

3. GMDSS Master Plan

Is plan up to date? No

Date of last update; Nil

MSI - National Coordinator Procedures

Do you have access to IMO/IHO/WMO Joint Manual on MSI? Yes

Do you follow the suggested warning format in Joint Manual? Yes

Have you or your staff received MSI Training? Yes

Are you aware of your NAVAREA Coordinator? Yes

Do you pass MSI to NAVAREA Coordinator? Yes

Do you request NAVAREA Coordinator broadcast MSI? Yes

[Remarks about MSI - National Coordinator Procedures]

MSI Broadcast Service					
NAVTEX	SafetyNET			IIF NBDP	
	NAV	MET	SAR		
<input type="checkbox"/>	<input checked="" type="checkbox"/>	<input type="checkbox"/>	<input type="checkbox"/>	<input type="checkbox"/>	<input type="checkbox"/>

Complete Section 4

Specifics of equipment used and software version with date updated

Equipment Type for Ports and Local Area	Software Version	Date of Latest Update
Maritime VHF & HF Radio		

Summary of National Maritime Safety Information Issued

2017		2018		2019	
Total	Average Elapsed Time	Total	Average Elapsed Time	Total	Average Elapsed Time
0	Mins	1	Mins	1	Mins

4. International SafetyNET Service

Does your Administration broadcast MSI through the International SafetyNET Service? No

Is it Operational now? No

If not indicate the expected date of operation

NAV/MET Area	Type of Information	Country	LES/LESO	Ocean Region/LES ID	MSI Coastal Warning Area ⁽¹⁾ (if applicable)	Broadcast Schedule (UTC)	Status of Implementation
	NAV ⁽²⁾	*					
	MET ⁽³⁾	**					
	SAR ⁽⁴⁾						

(1) Provide a diagram showing limits of Coastal Warning Areas, including B1 Codes

(2) NAV = Navigational Warnings

(3) MET = Meteorological Warnings

(4) SAR = Search and Rescue Alerts

* - NAVAREA Coordinator responsible for the Area

** - The issuing service nominated by WMO for METAREA services, responsible for the area

5. NAVTEX Coverage

Samoa does not broadcast MSI via NAVTEX as this is not practiced in the SWP region.

NAVTEX Coast Station	Frequency	Position of Antenna	Range (NM)	B1 Character	Transmission Times	Language

6. HF Narrow Band Direct Printing (NBDP) MSI Broadcast Service

Does your Administration broadcast MSI through HF NBDP?

No

Is it Operational now? No

If not indicate the expected date of operation

Country	NBDP Coast Station	Position	Frequency Band	Schedule (UTC)	Status
			4MHz (4210KHz)		
			6MHz (6425KHz)		
			8MHz (8416.5KHz)		
			12MHz (12579KHz)		
			16MHz (16806.5KHz)		
			19MHz (19680.5KHz)		
			22MHz (22376 KHz)		
			26MHz (26100.5 KHz)		

7. Does your Administration broadcast MSI through other means?

MWTI as the competent authority disseminates MSI by e-mail and text messages. Awareness and retrieving relevant MSI information from affected parties such as Ministry of Agriculture and Fisheries and other Maritime Stakeholders are done through circular letters issued and Committee meetings

8. Operational Issues

MWTI continues to provide MSI information via H-Notes to RCCNZ and LINZ for promulgation in Notices to Mariners and any necessary changes on the affected navigational Charts of Samoa. Manatua Cable installation was one of the major issues affecting safety of navigation which has been reported to NAVAREA XIV Coordinator in early November 2019.

9. Contingency Planning

MSI messages sent to the NAVAREA XIV Coordinator, RCCNZ by email are promulgated.

10. Capacity Building

MWTI representatives have participated in the past MSI training courses conducted during SWPHC meetings as well as several trainings conducted by LINZ. However there is still a need for the continuation of this training in the future for upgrading and incorporating any relevant amendments.

11. Other Activities

MBES Survey for all priority areas identified during the risk assessment in 2017 by LINZ has been completed in October 2019. All Samoa charts will be improved with the survey data as well as having them renumbered and incorporated with the two-digit country code.

12. National Maritime Website

www.mwti.gov.ws

13. Recommendations

It is strongly recommended that LINZ continues to assist Samoa through the provision of relevant trainings and publishing updated navigational charts as a result of the completed MBES survey in October 2019.

14. Summary

This self-assessment report highlights the MSI activities for the year 2019. MWTI continues to work with relevant parties to obtain relevant information affecting hydrography and safety of navigation within Samoa's jurisdiction and communicated via H.Notes to RCCNZ and LINZ for promulgation in Notice to Mariners.

15. Remarks/Additional Information

Nil

16. Attachments

National Reports to Regional Hydrographic Commissions

Regional Hydrographic Commissions (RHCs) are intended to provide, under the auspices of the International Hydrographic Organization regional, coordination with regard to nautical information, hydrographic surveys, production of nautical charts and documents, training, technical cooperation and hydrographic capacity building projects.

The RHCs are required to report to the International Hydrographic Conference on activities, hydrographic capacity and requirements within their region. They are also required to submit an annual report to the International Hydrographic Bureau indicating progress made against the key targets in the IHO Work Programme. To assist in the RHC gathering information on the activities within their area of responsibility a number of reports are required from National Organizations.

Details of these reporting requirements are available in IHO Resolution 2/1997 as amended which is available from the IHO Website;

http://iho.int/iho_pubs/misc/M3-E-JAN13.pdf

Part of the reporting requirements relate to Maritime Safety Information services. This document is provided to assist National Coordinators in capturing the required information and is based on the current approved World Wide Navigational Warning Service Template.

On completion of the form National Coordinators are requested to pass the information to the relevant NAVAREA Coordinator for their Region.

Associated NAVAREA Coordinator

(Details should be completed by NAVAREA Coordinator prior to distributing form)

NAVAREA Region	XI
Primary Point of Contact	Notices to Mariners Office
Organization	Hydrographic and Oceanographic Department
Email Address	tuho@jodc.go.jp jcg-tuho@navarea11.go.jp
Telephone No.	+81-3-3595 3571
Facsimile No.	+81-3-3595 3647
Postal Address	Japan Coast Guard 3-1-1, Kasumigasacki, Chiyoda-ku, Tokyo 135-8932

[Guidance on what information to be included can be obtained by hovering the mouse over the relevant fields in the form. If additional guidance or assistance in completing the form is required then the National Coordinator should contact the relevant NAVAREA Coordinator.]

**National Maritime Safety Information
(MSI) Self Assessment**

Kiribati

Ministry of Information, Communications, Transport and Fisheries

1. Maritime Area

Kiribati Coastal Navigational Warning area covers Kiribati waters including 200 nautical miles exclusive economic zone (EEZ) of Kiribati for broadcasting of navigational warnings via Coast Radio Station (CRS) on VHF/HF.

2. Operational Points of Contact for the National Coordinator

Institution/Organization	Telephone	Facsimile	Email
MICTTD, Marine Division	686-74026003		eritaia.tauro@micttd.gov.ki
	686-73022727		

3. GMDSS Master Plan

Is plan up to date? No

Date of last update;

MSI - National Coordinator Procedures

Do you have access to IMO/IHO/WMO Joint Manual on MSI? Yes

Do you follow the suggested warning format in Joint Manual? Yes

Have you or your staff received MSI Training? Yes

Are you aware of your NAVAREA Coordinator? Yes

Do you pass MSI to NAVAREA Coordinator? Yes

Do you request NAVAREA Coordinator broadcast MSI? Yes

For Kiribati MSI broadcast service, Navigational warning / safety, Met information and SAR information through radio communication VHF channel 16 and HF 6215 khz to international and domestic vessels.

MSI Broadcast Service					
NAVTEX	SafetyNET			HF NBDP	
	NAV	MET	SAR		
<input type="checkbox"/>	<input type="checkbox"/>	<input type="checkbox"/>	<input type="checkbox"/>	<input type="checkbox"/>	<input type="checkbox"/>

Specifics of equipment used and software version with date updated

Equipment Type for Ports and Local Area	Software Version	Date of Latest Update
Maritime VHF & HF Radio		

Summary of National Maritime Safety Information Issued

2017		2018		2019	
Total	Average Elapsed Time	Total	Average Elapsed Time	Total	Average Elapsed Time
Nil	<input type="text"/> Mins		<input type="text"/> Mins	136	<input type="text"/> Mins

4. International SafetyNET Service

Does your Administration broadcast MSI through the International SafetyNET Service? No

Is it Operational now? No

If not indicate the expected date of operation

NAV/MET Area	Type of Information	Country	LES/LESO	Ocean Region/LES ID	MSI Coastal Warning Area ⁽²⁾ (if applicable)	Broadcast Schedule (UTC)	Status of Implementation
	NAV ⁽²⁾	*					
	MET ⁽³⁾	**					
	SAR ⁽⁴⁾						

(1) Provide a diagram showing limits of Coastal Warning Areas, including B1 Codes

(3) MET – Meteorological Warnings

* - NAVAREA Coordinator responsible for the Area

** - The issuing service nominated by WMO for METAREA services, responsible for the area

(2) NAV = Navigational Warnings

(4) SAR – Search and Rescue Alerts

5. NAVTEX Coverage

Kiribati does not broadcast MSI via NAVTEX as this is not practiced in the SWP region.

NAVTEX Coast Station	Frequency	Position of Antenna	Range (NM)	B1 Character	Transmission Times	Language

6. HF Narrow Band Direct Printing (NBDP) MSI Broadcast Service

Does your Administration broadcast MSI through HF NBDP?

No

Is it Operational now?

If not indicate the expected date of operation

Country	NBDP Coast Station	Position	Frequency Band	Schedule (UTC)	Status
			4MHz (4210KHz)		
			6MHz (6425KHz)		
			8MHz (8416.5KHz)		
			12MHz (12579KHz)		
			16MHz (16806.5KHz)		
			19MHz (19680.5KHz)		
			22MHz (22376 KHz)		
			26MHz (26100.5 KHz)		

7. Does your Administration broadcast MSI through other means?

For Kiribati MSI broadcast service, Navigational warning / safety, Met information and SAR information through radio communication VHF channel 16 and HF on 6215 khz to international and domestic vessels.

Broadcasting is carried by Marine Guard via VHF & HF daily at 0803,1603.

8. Operational Issues

Radio Communication Coverage, sometimes VHF & HF communication is poor at far distances like Tarawa to Banaba Island and the Line and Phoenix Groups.

9. Contingency Planning

MSI messages sent to the NAVAREA XIV and NAVAREA XI Coordinator by email are promulgated.

10. Capacity Building

Kiribati has attended previous SWPHC MSI courses and trainings. Further MSI training/Capacity Building is required.

11. Other Activities

12. National Maritime Website

www.micttd.gov.ki

13. Recommendations

14. Summary

This self-assessment report highlights the MSI activities for the previous years and year 2019. MSI database was first established in 2017 after attending MSI training in NZ, hence we have the MSI record for 2017, 2018 and 2019 only as stated above. Marine Guard (Kiribati) is very actively involved in providing MSI services to domestic and international vessels within the Kiribati coastal areas through VHF and HF radio communications.

15. Remarks/Additional Information

--

16. Attachments

**National Maritime Safety Information
(MSI) Self Assessment**

Tonga

Marine and Port Division (MPD)

1. Maritime Area

The exclusive economic zone of the Kingdom shall be the area beyond and adjacent to the territorial sea of the Kingdom out to a line every point of which is at a distance of 200 nautical miles from the nearest point of the baselines.

2. Operational Points of Contact for the National Coordinator

Institution/Organization	Telephone	Facsimile	Email
Marine and Port Division (MPD)	+676 22 555		sioeli.fifita@moi.gov.to
			sioeli_fifita@yahoo.co.nz

3. GMDSS Master Plan

Is plan up to date? No

Date of last update; NA

MSI - National Coordinator Procedures

Do you have access to IMO/IHO/WMO Joint Manual on MSI? Yes

Do you follow the suggested warning format in Joint Manual? Yes

Have you or your staff received MSI Training? Yes

Are you aware of your NAVAREA Coordinator? Yes

Do you pass MSI to NAVAREA Coordinator? Yes

Do you request NAVAREA Coordinator broadcast MSI? Yes

[Remarks about MSI - National Coordinator Procedures]

MSI Broadcast Service							
NAVTEX		SafetyNET				HF NBDP	
		NAV	MET	SAR			
<input type="checkbox"/>		<input checked="" type="checkbox"/>	<input type="checkbox"/>	<input type="checkbox"/>		<input type="checkbox"/>	

Specifics of equipment used and software version with date updated

Equipment Type for Ports and Local Area	Software Version	Date of Latest Update
VHF and MF/HF Radio		

Summary of National Maritime Safety Information Issued

2017		2018		2019	
Total	Average Elapsed Time	Total	Average Elapsed Time	Total	Average Elapsed Time
-	<input type="text"/> Mins	6	<input type="text"/> Mins	4	<input type="text"/> Mins

4. International SafetyNET Service

Does your Administration broadcast MSI through the International SafetyNET Service? No

Is it Operational now? No

If not indicate the expected date of operation NA

NAV/MET Area	Type of Information	Country	LES/LESO	Ocean Region/LES ID	MSI Coastal Warning Area ⁽¹⁾ (if applicable)	Broadcast Schedule (UTC)	Status of Implementation
	NAV ⁽²⁾	*					
	MET ⁽³⁾	**					
	SAR ⁽⁴⁾						

(1) Provide a diagram showing limits of Coastal Warning Areas, including B1 Codes

(2) NAV = Navigational Warnings

(3) MET = Meteorological Warnings

(4) SAR = Search and Rescue Alerts

* - NAVAREA Co-ordinator responsible for the Area

** - The issuing service nominated by WMO for METAREA services, responsible for the area

5. NAVTEX Coverage

This services does not provide in Tonga as it is not provided in the SWP region

NAVTEX Coast Station	Frequency	Position of Antenna	Range (NM)	B1 Character	Transmission Times	Language

6. HF Narrow Band Direct Printing (NBDP) MSI Broadcast Service

Does your Administration broadcast MSI through HF NBDP? No

Is it Operational now? No

If not indicate the expected date of operation NA

Country	NBDP Coast Station	Position	Frequency Band	Schedule (UTC)	Status
			4MHz (4210KHz)		
			6MHz (6425KHz)		
			8MHz (8416.5KHz)		
			12MHz (12579KHz)		
			16MHz (16806.5KHz)		
			19MHz (19680.5KHz)		
			22MHz (22376 KHz)		
			26MHz (26100.5 KHz)		

7. Does your Administration broadcast MSI through other means?

Once MSI is received by Marine and Port Division (MPD), the message is initially send by email to Tonga Coastal Radio Station, Rescue Coordination Centre New Zealand, and Land and Information New Zealand for promulgation.

Tonga Coastal Radio Station broadcasted the received MSI nav warning received from MPD as soon as they receive it via VHF Ch 16 & 12 and MF/HF radio on 2182 6215 & 6230 MHz and at

8. Operational Issues

National MSI Coordinator work only from 0830 hr to 1630 hr on working days, that is from Monday to Friday except public holidays. This means that MSI nav warning may not receive by the National Coordinator on non working hours and days, and therefore any urgent information will not be broadcasted until it is received and relay by National Coordinator.

9. Contingency Planning

The procedure provided on MPD Quality Manual that if the initial means of sending MSI to broadcaster is not available, there are phone numbers that they can be contacted on. There have been cases where it was urgent and Masters of domestic vessels are contacted by phone to inform of the MSI's who have not yet formally podcasted.

10. Capacity Building

The most recent MSI training that MPD take part to was the Wellington training in mid 2018

11. Other Activities

Marine and Port Division just bought their own VHF and MF/HF radio to be stationed at the head office in Taufa'ahau Tupou IV Domestic wharf. This will enable MPD to broadcast MSI navigational warning and probably establish a new unit within MPD for MSI and AtoN.

12. National Maritime Website

www.infrastructure.gov.to

13. Recommendations

Nil

14. Summary

Marine and Port Division is currently the responsible authority for provision of Maritime Safety Information for Ports, Local, and National Areas via Tonga Coastal Radio Station and NavArea XIV via RCCNZ. MSI is just a portion of the bigger responsibility of the technical unit of Marine and Port Division that a very small percentage of time and effort spend on it due to lack of staff and multiple by responsible officer.

15. Remarks/Additional Information

16. Attachments

**National Maritime Safety Information
(MSI) Self Assessment**

Cook Islands

Ministry of Transport

1. Maritime Area

RCC New Zealand covers the Cook Islands waters including the 200 nautical mile Exclusive Economic Zone (EEZ)

2. Operational Points of Contact for the National Coordinator

Institution/Organization	Telephone	Facsimile	Email
Ministry of Transport	+682 28810	+682 28816	junior.ngatokorua@cookislands.gov.ck

3. GMDSS Master Plan

Is plan up to date? No

Date of last update;

MSI - National Coordinator Procedures

Do you have access to IMO/IHO/WMO Joint Manual on MSI? Yes

Do you follow the suggested warning format in Joint Manual? Yes

Have you or your staff received MSI Training? Yes

Are you aware of your NAVAREA Coordinator? Yes

Do you pass MSI to NAVAREA Coordinator? Yes

Do you request NAVAREA Coordinator broadcast MSI? Yes

[Remarks about MSI - National Coordinator Procedures]

MSI Broadcast Service						
NAVTEX	SafetyNET				HF NBDP	
	NAV	MET	SAR			
<input type="checkbox"/>	<input type="checkbox"/>	<input type="checkbox"/>	<input type="checkbox"/>	<input type="checkbox"/>	<input type="checkbox"/>	<input type="checkbox"/>

Specifics of equipment used and software version with date updated

Equipment Type for Ports and Local Area	Software Version	Date of Latest Update

Summary of National Maritime Safety Information Issued

2017		2018		2019	
Total	Average Elapsed Time	Total	Average Elapsed Time	Total	Average Elapsed Time
0	Mins	0	2 Mins	3	Mins

4. International SafetyNET Service

Does your Administration broadcast MSI through the International SafetyNET Service? No

Is it Operational now? No

If not indicate the expected date of operation

NAV/MET Area	Type of Information	Country	LES/LESO	Ocean Region/LES ID	MSI Coastal Warning Area ⁽¹⁾ (if applicable)	Broadcast Schedule (UTC)	Status of Implementation
	NAV ⁽²⁾	*					Not-Operational
	MET ⁽³⁾	**					
	SAR ⁽⁴⁾						Not-Operational

(1) Provide a diagram showing limits of Coastal Warning Areas, including B1 Codes

(2) NAV – Navigational Warnings

(3) MET – Meteorological Warnings

(4) SAR – Search and Rescue Alerts

* – NAVAREA Coordinator responsible for the Area

** – The issuing service nominated by WMO for METAREA services, responsible for the area

5. NAVTEX Coverage

Cook Islands does not broadcast coastal warnings via NAVTEX.

NAVTEX Coast Station	Frequency	Position of Antenna	Range (NM)	B1 Character	Transmission Times	Language

6. HF Narrow Band Direct Printing (NBDP) MSI Broadcast Service

Does your Administration broadcast MSI through HF NBDP?

No

Is it Operational now?

If not indicate the expected date of operation

Country	NBDP Coast Station	Position	Frequency Band	Schedule (UTC)	Status
			4MHz (4210KHz)		
			6MHz (6425KHz)		
			8MHz (8416.5KHz)		
			12MHz (12579KHz)		
			16MHz (16806.5KHz)		
			19MHz (19680.5KHz)		
			22MHz (22376 KHz)		
			26MHz (26100.5 KHz)		

7. Does your Administration broadcast MSI through other means?

Ministry of Transport, as the competent authority, disseminates MSI via email in the first instance. Broadcast is carried out by Bluesky HF radio via VHF and HF daily at 0815 and 2015. Navigational Warnings affecting SOLAS ships are sent to the NAVAREA XIV Coordinator.

8. Operational Issues

Receiving and transmitting becomes difficult the further you are away from the main islands. Sometimes you can't hear.

9. Contingency Planning

Navigational Warnings affecting SOLAS ships are sent to the NAVAREA XIV Coordinator.

10. Capacity Building

Ministry of Transport, as well as members of Cook Islands Hydrographic Office have participated in the past MSI training courses in SWP region. Assistance is required for the continuation of this training.

11. Other Activities

Ministry of Transport (MSI) helps and supports the Cook Islands Rescue Coordination Centre (RCC) for Search and Rescue (SAR) purposes.

12. National Maritime Website

www.transport.gov.ck

13. Recommendations

It is strongly recommended that the Capacity Building Fund provides assistance in dispatching necessary experts to Cook Islands for conducting a feasibility study for the provision of GMDSS equipment for broadcasting of MSI under NZ guidance.

14. Summary

This self-assessment report highlights the MSI activities for the year 2019. Cook Islands is very actively involved in providing MSI services to the maritime industry locally including local operations and RCC New Zealand and LINZ.

15. Remarks/Additional Information

None

16. Attachments

**National Maritime Safety Information
(MSI) Self Assessment**

NIUE

Ministry of Infrastructure

1. Maritime Area

Niue's Coastal Navigational Warning area covers ~15 NM for broadcasting of navigational warnings via Niue's Marine Radio on VHF.

2. Operational Points of Contact for the National Coordinator

Institution/Organization	Telephone	Facsimile	Email
Ministry of Infrastructure	+683 888 6983 /+683 4047		lynscy.talagi@mail.gov.nu

3. GMDSS Master Plan

Is plan up to date? No

Date of last update;

MSI - National Coordinator Procedures

Do you have access to IMO/IHO/WMO Joint Manual on MSI? Yes

Do you follow the suggested warning format in Joint Manual? Yes

Have you or your staff received MSI Training? Yes

Are you aware of your NAVAREA Coordinator? Yes

Do you pass MSI to NAVAREA Coordinator? Yes

Do you request NAVAREA Coordinator broadcast MSI? Yes

The National MSI Coordinator and representatives from relevant government agencies received a one-day MSI training from the NAVAREA XIV Coordinator, IJNZ and the National MSI Coordinator for Fiji. The NAVAREA XIV Coordinator helped draft local warnings for the submarine cable. MSI is included in the Maritime Safety Bill, which is expected to go to Parliament by March.

MSI Broadcast Service					
NAVTEX	SafetyNET			HF NBDP	
	NAV	MET	SAR		
<input type="checkbox"/>	<input checked="" type="checkbox"/>	<input type="checkbox"/>	<input type="checkbox"/>	<input type="checkbox"/>	<input type="checkbox"/>

Specifics of equipment used and software version with date updated

Equipment Type for Ports and Local Area	Software Version	Date of Latest Update
Maritime VHF		

Summary of National Maritime Safety Information Issued

Year -2		Year -2		Current Year	
Total	Average Elapsed Time	Total	Average Elapsed Time	Total	Average Elapsed Time
0	<input type="text"/> Mins	0	<input type="text"/> Mins	2	<input type="text"/> Mins

4. International SafetyNET Service

Does your Administration broadcast MSI through the International SafetyNET Service? No

Is it Operational now?

If not indicate the expected date of operation

NAV/MET Area	Type of Information	Country	LES/LESO	Ocean Region/TES ID	MSI Coastal Warning Area ⁽¹⁾ (if applicable)	Broadcast Schedule (UTC)	Status of Implementation
	NAV ⁽²⁾	*					
	MET ⁽³⁾	**					
	SAR ⁽⁴⁾						

(1) Provide a diagram showing limits of Coastal Warning Areas, including BI Codes

(2) NAV – Navigational Warnings

(3) MET – Meteorological Warnings

(4) SAR – Search and Rescue Alerts

* - NAVAREA Coordinator responsible for the Area

** - The issuing service nominated by WMO for METAREA services, responsible for the area

5. NAVTEX Coverage

Niue does not broadcast MSI via NAVTEX as this is not practiced in the SWP region.

NAVTEX Coast Station	Frequency	Position of Antenna	Range (NM)	B1 Character	Transmission Times	Language

6. HF Narrow Band Direct Printing (NBDP) MSI Broadcast Service

Does your Administration broadcast MSI through HF NBDP?

No

Is it Operational now?

If not indicate the expected date of operation

Country	NBDP Coast Station	Position	Frequency Band	Schedule (UTC)	Status
			4MHz (4210KHz)		
			6MHz (6425KHz)		
			8MHz (8416.5KHz)		
			12MHz (12579KHz)		
			16MHz (16806.5KHz)		
			19MHz (19680.5KHz)		
			22MHz (22376 KHz)		
			26MHz (26100.5 KHz)		

7. Does your Administration broadcast MSI through other means?

MSI mainly broadcast via email to local stakeholders. Processes for other options (local tv and radio, and social media) needs to be further discussed.

8. Operational Issues

No full VHF Ch 16 coverage around Niue, although anticipated in 2020. Delayed tender process.

9. Contingency Planning

MSI messages sent to the NAVAREA XIV Coordinator, RCCNZ by email to be promulgated.

It has been discussed that Telecom Niue be appointed the deputy National MSI Coordinator as they operate the marine radio 24/7. Standard operating procedures for staff are being worked on.

10. Capacity Building

Feb 2019: Drafting H-Notes workshop by SPC

June 2019: One-day MSI training in-country by the NAVAREA XIV Coordinator, LINZ and the National MSI Coordinator for Fiji

Aug 2019: The National MSI Coordinator successfully completed the IALA Level 1 Aids to Navigation Manager Course

11. Other Activities

The Department of Transport requests updates from RCCNZ of its register of 406 MHz EPIRBs that are coded to Niue. This is important for SAR purposes. An AToN Risk Assessment of Avatele and Namukulu channels was done with SPC in February 2019. Niue received data for the LiDAR survey completed in June 2018 under PRNI. The National Emergency Operations Centre opened in Oct 2019. Niue is working with the Asian Development Bank to develop the international port.

12. National Maritime Website

none

13. Recommendations

More training is required for staff operating the marine radio at Telecom Niue.

14. Summary

This self-assessment report highlights the MSI activities for the year 2019. Niue still needs to finalise its processes for receiving information from stakeholders and standard operating procedures for the marine radio. The National MSI Coordinator provides LINZ with information to update charts.

15. Remarks/Additional Information

Niue communicated with the NAVAREA XIV Coordinator regarding drafting MSI for cable laying operations. Two local warnings were sent.

Weather services are broadcast on local tv, radio and Facebook.

16. Attachments

[List any attachments including diagrams of coverage areas that are included with this Form]

**National Maritime Safety Information
(MSI) Self Assessment**

FRANCE

JRCC TAHITI

1. Maritime Area

French Polynesian Area R (in NAVAREA XIV) is a defined area for the purpose of broadcasting Coastal Navigation Warnings via Inmarsat SafetyNET

The limits of the area are: 04-00S 149-00W to 04-00S 132-00W to 31-00S 132-00W to 31-00S 158-00W to 23-30S 156-00W to 17-00S 156-00W to 13-00S 158-00W to 13-00S 149-00W

2. Operational Points of Contact for the National Coordinator

Institution/Organization	Telephone	Facsimile	Email
JRCC TAHITI	+689 40 54 16 16	+689 40 42 39 15	contact@jrcc.pf

3. GMDSS Master Plan

Is plan up to date? Yes

Date of last update; 30 July 2018

MSI - National Coordinator Procedures

Do you have access to IMO/IHO/WMO Joint Manual on MSI? Yes

Do you follow the suggested warning format in Joint Manual? Yes

Have you or your staff received MSI Training? Yes

Are you aware of your NAVAREA Coordinator? Yes

Do you pass MSI to NAVAREA Coordinator? Yes

Do you request NAVAREA Coordinator broadcast MSI? Yes

[Remarks about MSI - National Coordinator Procedures]

MSI Broadcast Service									
NAVTEX		SafetyNET						HF NBDP	
		NAV		MET		SAR			
		<input checked="" type="checkbox"/>				<input checked="" type="checkbox"/>			

Complete Section 4

Specifics of equipment used and software version with date updated

Equipment Type for Ports and Local Area	Software Version	Date of Latest Update
Thrane & Thrane easyMail	V1.15	Build 0027

Summary of National Maritime Safety Information Issued

2017		2018		2019	
Total	Average Elapsed Time	Total	Average Elapsed Time	Total	Average Elapsed Time
36	<input type="text"/> Mins	37	<input type="text"/> Mins	37	<input type="text"/> Mins

4. International SafetyNET Service

Does your Administration broadcast MSI through the International SafetyNET Service? Yes

Is it Operational now? Yes

If not indicate the expected date of operation

NAV/MET Area	Type of Information	Country	LES/LESO	Ocean Region/LES ID	MSI Coastal Warning Area (2) (if applicable)	Broadcast Schedule (UTC)	Status of Implementation
	NAV ⁽²⁾	* NZ	Aussaguel at Y	POR	R	0250,1450	Operational
	MET ⁽³⁾	**					
	SAR ⁽⁴⁾	FR	Aussaguel	POR			Operational

(1) Provide a diagram showing limits of Coastal Warning Areas, including B1 Codes

(2) NAV – Navigational Warnings

(3) MET – Meteorological Warnings

(4) SAR – Search and Rescue Alerts

* - NAVAREA Coordinator responsible for the Area

** - The issuing service nominated by WMO for METAREA services, responsible for the area

5. NAVTEX Coverage

French Polynesia does not broadcast coastal warnings via NAVTEX.

NAVTEX Coast Station	Frequency	Position of Antenna	Range (NM)	B1 Character	Transmission Times	Language

6. HF Narrow Band Direct Printing (NBDP) MSI Broadcast Service

Does your Administration broadcast MSI through HF NBDP?

No

Is it Operational now?

If not indicate the expected date of operation

Country	NBDP Coast Station	Position	Frequency Band	Schedule (UTC)	Status
			4MHz (4210KHz)		
			6MHz (6425KHz)		
			8MHz (8416.5KHz)		
			12MHz (12579KHz)		
			16MHz (16806.5KHz)		
			19MHz (19680.5KHz)		
			22MHz (22376 KHz)		
			26MHz (26100.5 KHz)		

7. Does your Administration broadcast MSI through other means?

In addition to SafetyNET broadcasts; JRCC Tahiti also broadcast navigation warnings on VHF, MF and HF if necessary.

8. Operational Issues

None

9. Contingency Planning

[Provide details on contingency plans for the provision of MSI if normal methods are unable to be used]

10. Capacity Building

[Provide details on any capacity building recently completed, underway or planned for the provision of MSI. This includes infrastructure and training]

11. Other Activities

[Provide details on any other relevant activities, completed, underway or planned]

12. National Maritime Website

www.jrcc.pf/infonaut

13. Recommendations

None

14. Summary

[Include a summary of MSI services if relevant]

15. Remarks/Additional Information

[Provide any remarks or additional information]

16. Attachments

[List any attachments including diagrams of coverage areas that are included with this Form]

Annex C

National MSI Self-Assessment

Country: TUVALU
Organization: MARINE DEPARTMENT

(Please provide the information in English)

1. Maritime area

Tuvalu consists of nine separate islands with a total land area of about 26 square kilometres.

2. Operational Points of Contact for the National Coordinator

INSTITUTION	TELEPHONE	FACSIMILE	EMAIL
Ministry of Transport, Energy and Tourism	(688) 20 054/055	Nil	lpauchi@gmail.com taasi.pitoti@gmail.com

3. GMDSS Master Plan

There is no GMDSS Master Plan in place

[Specifics of equipment used and software version with date up-dated]

Equipment Type for Ports and Local Area	Software Version	Date of Up-date

[Detail the number of warnings identified as immediate priority (requiring transmission within 30 minutes) and the average elapsed time for passing to NAVAREA coordinator, as reported to the last RHC meeting]:

Year Y-2		Year Y-1		Year Y	
Total	Average elapsed time	Total	Average elapsed time	Total	Average elapsed time
xx	xx.x Mins	xx	xx.x Mins	xx	xx.x Mins

4. NAVTEX Coverage:

None