

18th Meeting of the South West Pacific Hydrographic Commission

National Report by

United Kingdom of Great Britain and Northern Ireland



IHO

International
Hydrographic
Organization

South West Pacific Hydrographic Commission



Main achievements during the year

- Commitment to serving the needs of the mariner.
- 62 New Charts and 28 New Editions.
- Innovation Programme
- ADMIRALTY Blue Data Conference

26 January 2021

<https://discover.admiralty.co.uk/blue-data-conference>



IHO

International
Hydrographic
Organization



Main challenges and/or obstructions

- COVID-19: zero opportunity for face-to-face collaboration.
- Funding / resources diverted to critical tasking.
- Necessity and invention... while COVID meant we could not provide training, we are launching online training, details of which have been shared with relevant RHCs



IHO

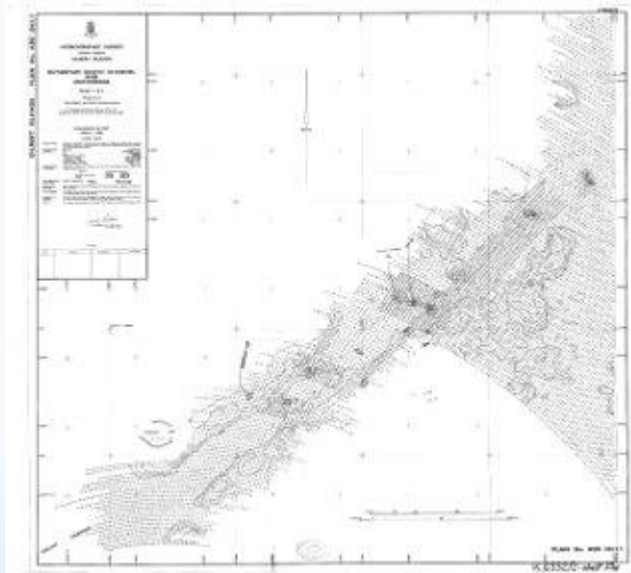
International
Hydrographic
Organization



Progress on surveys, charting and MSI

Kiribati

- Validation of SDB has been completed
- SDB Survey of all 3 island chains covering an area of 4.952KM²



Progress on surveys, charting and MSI

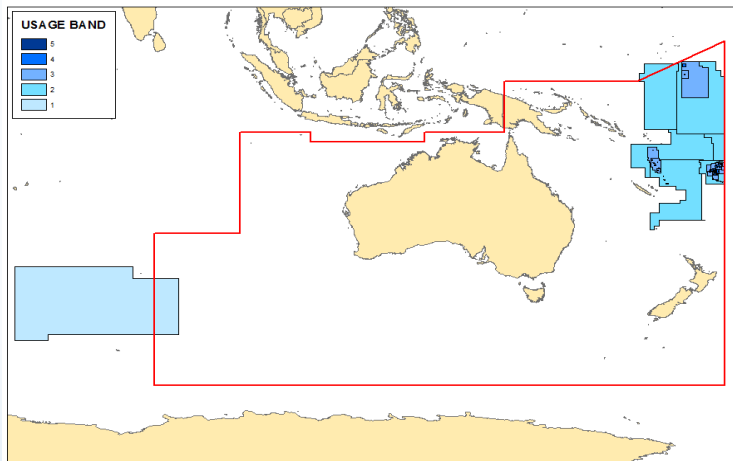
ENC Activity

94
GB ENCs

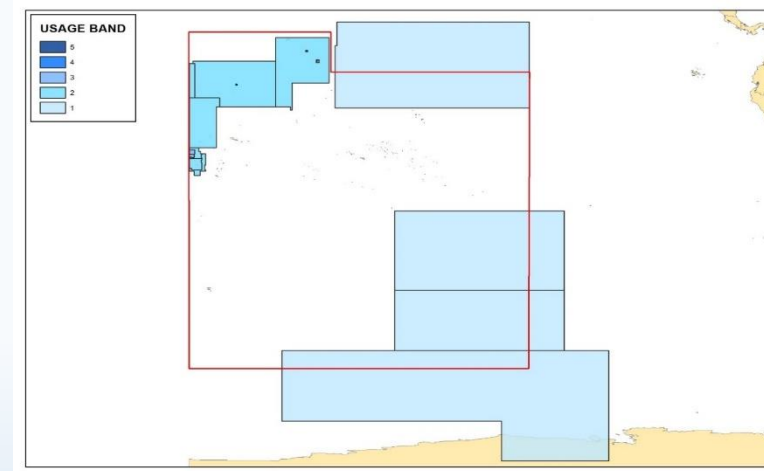
- 5 Usage Band 1
- 15 Usage Band 2
- 19 Usage Band 3
- 31 Usage Band 4
- 24 Usage Band 5

0
New Cells

GB ENCs West of 180°



GB ENCs East of 180°



Progress on MSDI

- The UKHO has recently adopted the UNGGIM IGIF as a means of auditing its work so far in establishing an MSDI and prioritising future activities.
- The UKHO's aspiration is to have established itself as the de-facto owner of the UK's MSDI by 2022. This aspiration has led to a review of the UKHO's internal data platforms and Marine Data Portal.



IHO

International
Hydrographic
Organization



Progress on surveys, charting and MSI

Our MSDI Initiative

Creating a new information platform to support existing SOLAS products and services and wider “Blue Economy” transformation



IHO

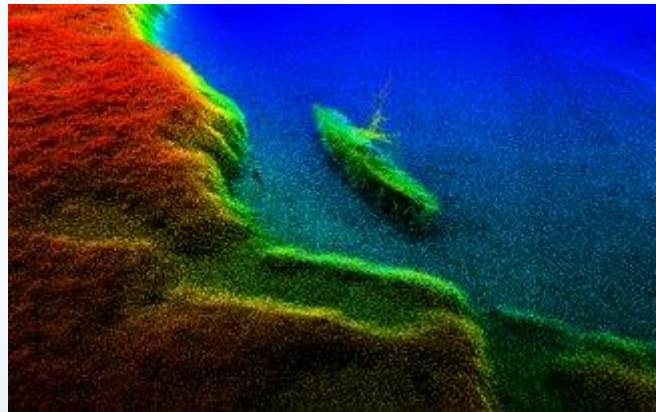
International
Hydrographic
Organization



Progress on surveys, charting and MSI

Sources of MSDI-suitable data include:

- Bathymetric surveying
- Coastline, Tidal and Oceanographic data
- Aids to Navigation and Geographical names
- Seafloor type, Obstructions and Wrecks
- Maritime information and regulations
- At-Sea and Shoreline constructions
- Practice and Exercise and/or Restricted areas



IHO

International
Hydrographic
Organization



Plans that affect the region

- Future CME and OTSMP activity (funding dependent) / PCA nation plans.
- Charting plans for next year still to be decided once we have received and processed new data.
- Online training offer



IHO

International
Hydrographic
Organization

