



**Land Information  
New Zealand**  
*Toitū te whenua*

# Marine Geospatial Information

NZ Hydrographic Authority / SWPHC

**Rachel Gabara**

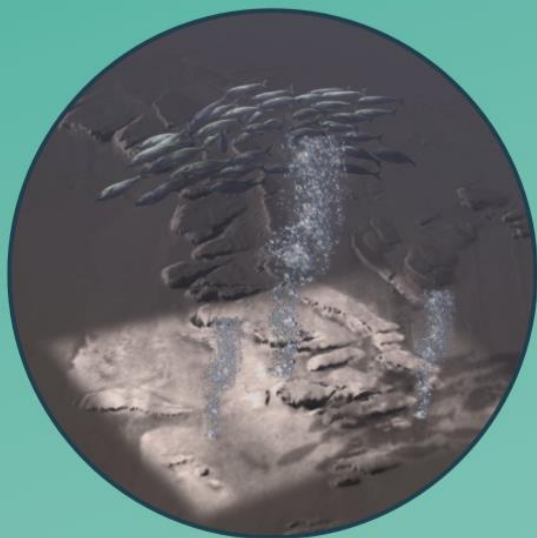
Manager Hydrographic Data and Products

Feb 2021

# Value of Marine Geospatial Information



# Broader Outcomes

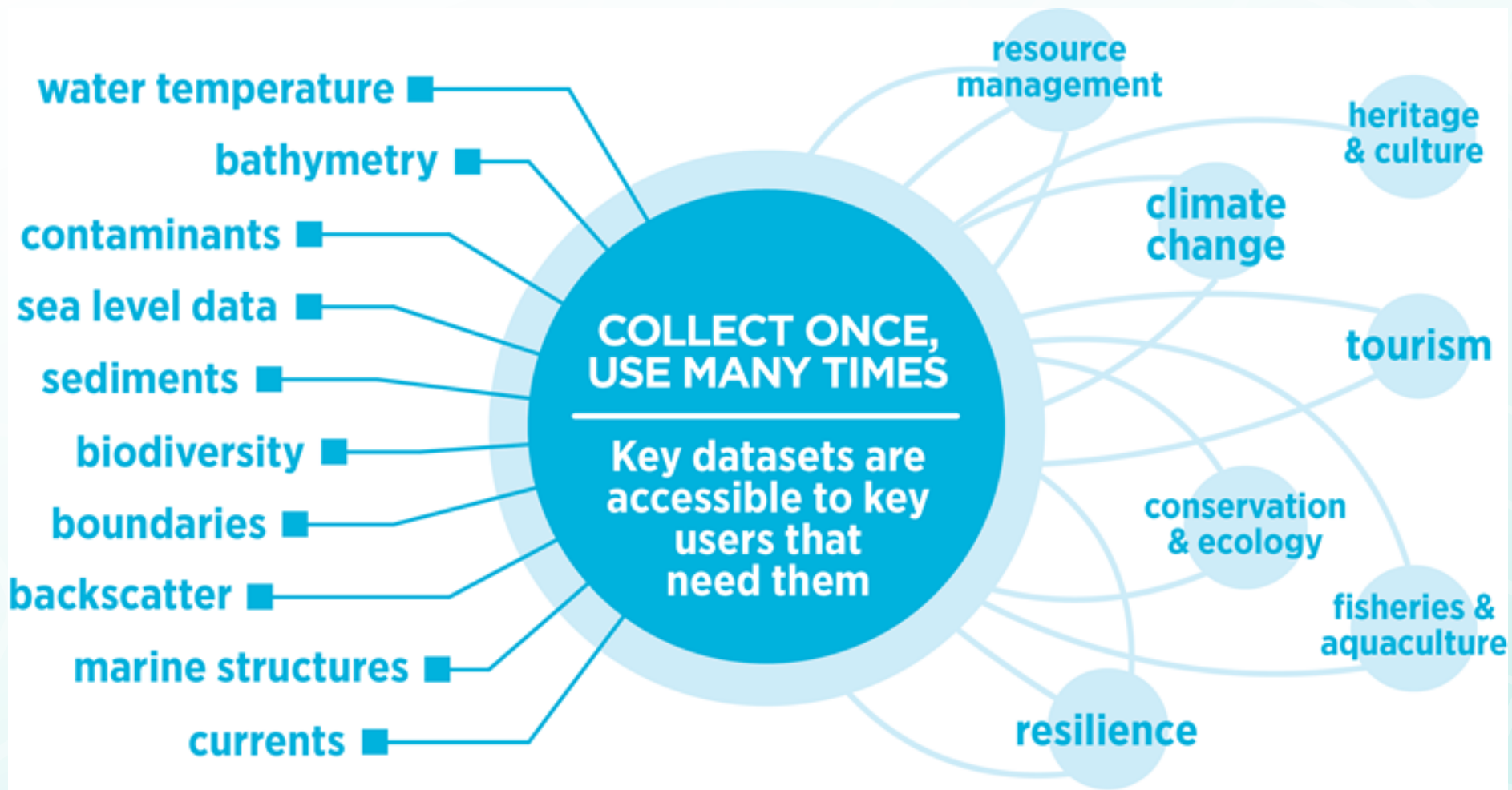


## Marine habitat mapping

The seabed topography and sediments data we collect is important to understand the biophysical marine environment.

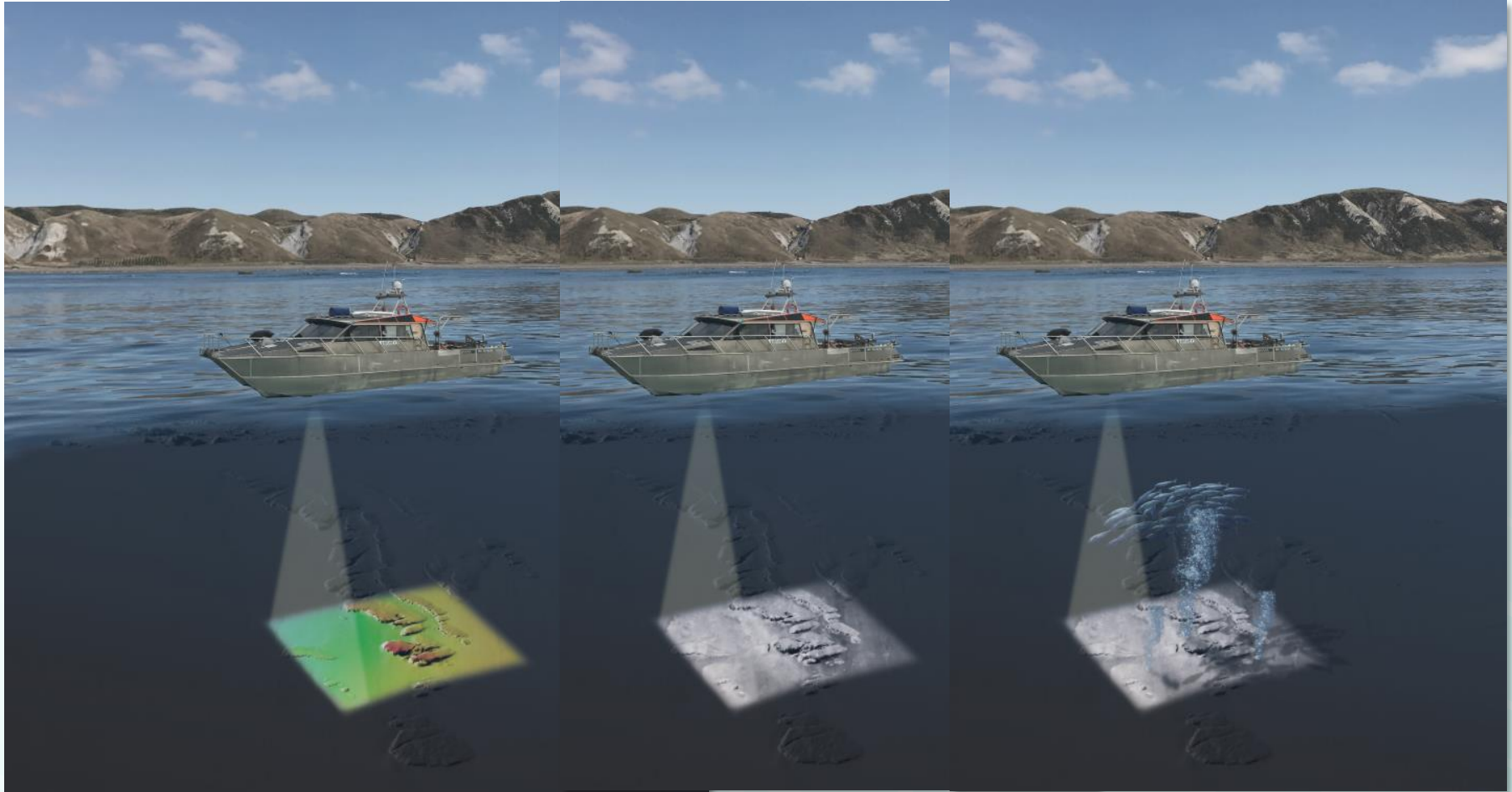
Marine habitat mapping helps you mitigate risks in areas influenced by human activities or natural disasters.

# Collect Once, Use Many Times





# Survey Deliverables

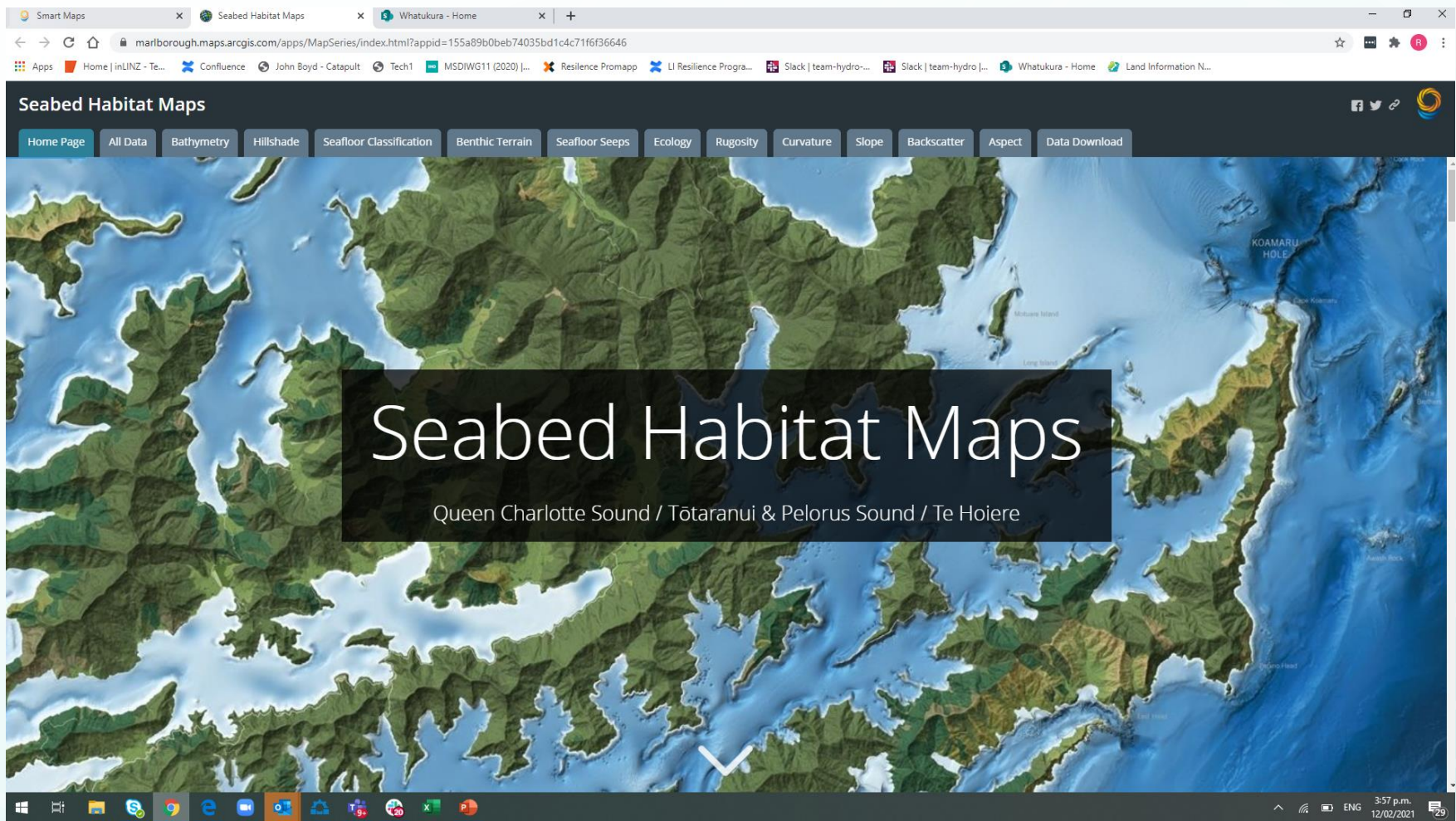


Bathymetry

Backscatter

Water column

# Case Study – MDC Partnership





# NZ Marine Geospatial WG

Established Feb 2019



South Taranaki  
Underwater Club  
Project Reef Life



Fisheries New Zealand  
Tini a Tangaroa



Ministry for Primary Industries  
Manatū Ahu Matua



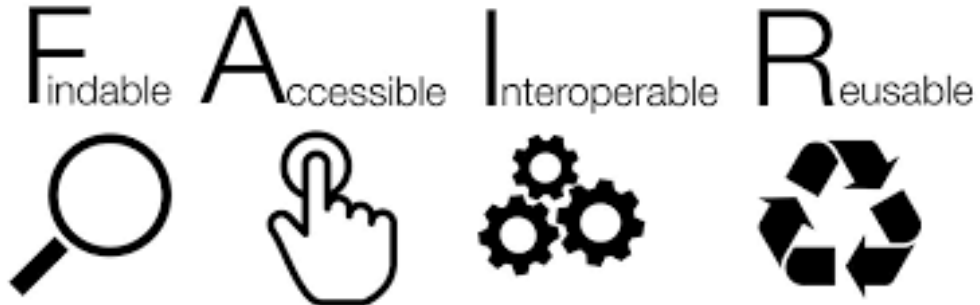
# WG Purpose and Goals

## Purpose

- Facilitate national collaboration to grow the value of MGI investments

## Goals

1. MGI is F.A.I.R
2. MGI is captured and freely available in a timely way
3. Widespread knowledge of MGI applications and uses
4. Improve visibility of marine data capture, to reduce duplication and leverage opportunities for partnerships





# Work programme

## NZ MGI WG Road Map – 2020-2022 Project Timeline



Complete

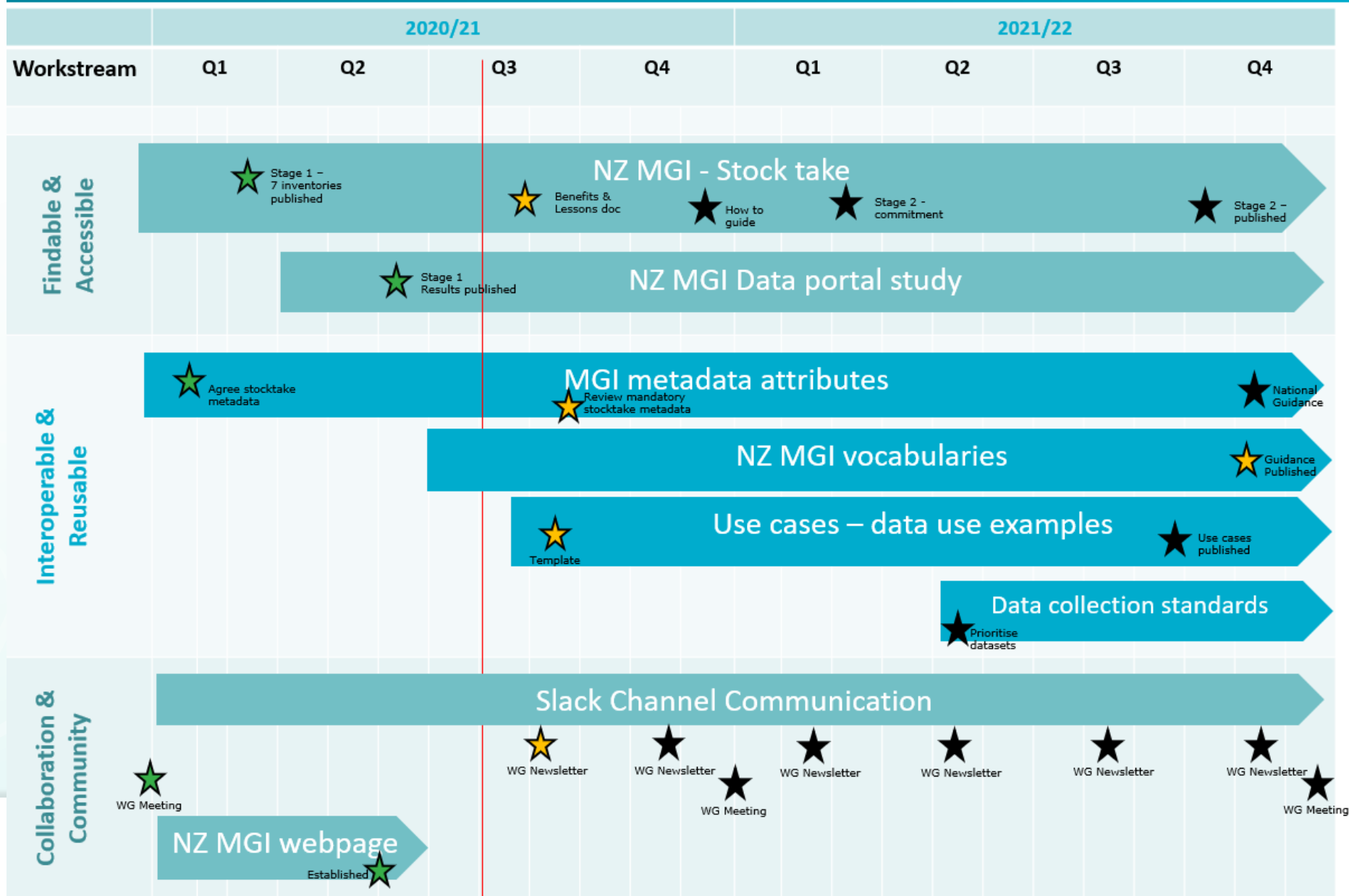


In Progress



Not started

As at February 2021



# Thank you 😊

rgabara@linz.govt.nz