

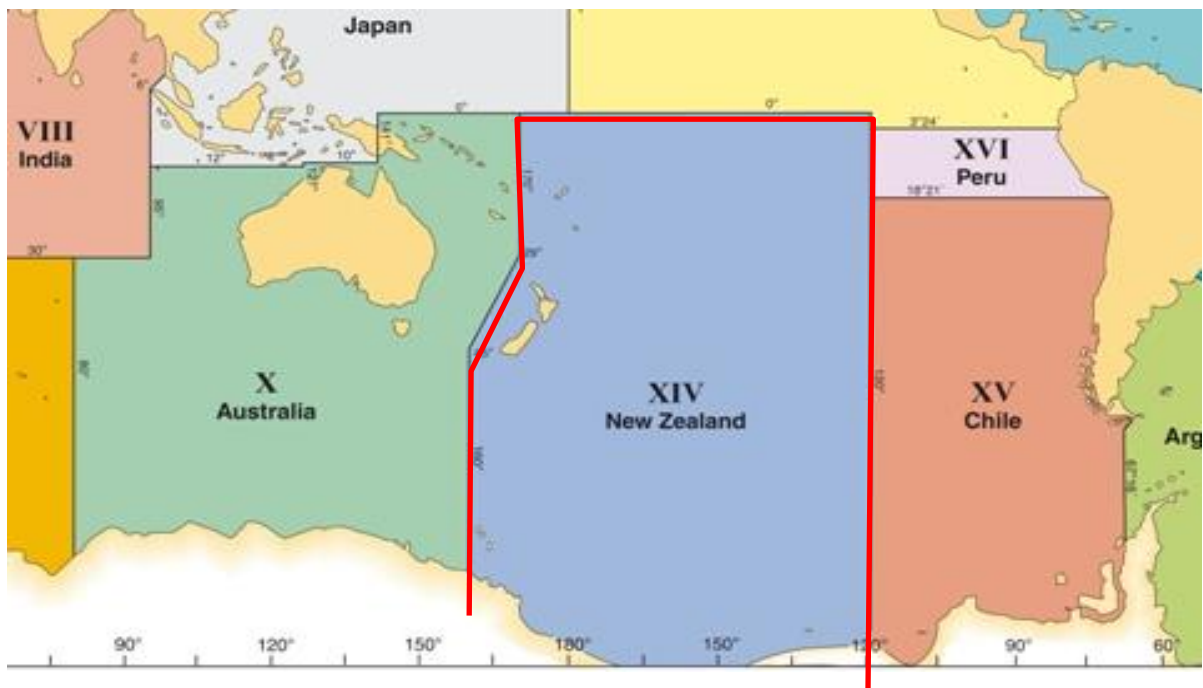
## MSI in NAVAREA XIV

Submitted by New Zealand/NAVAREA XIV Coordinator

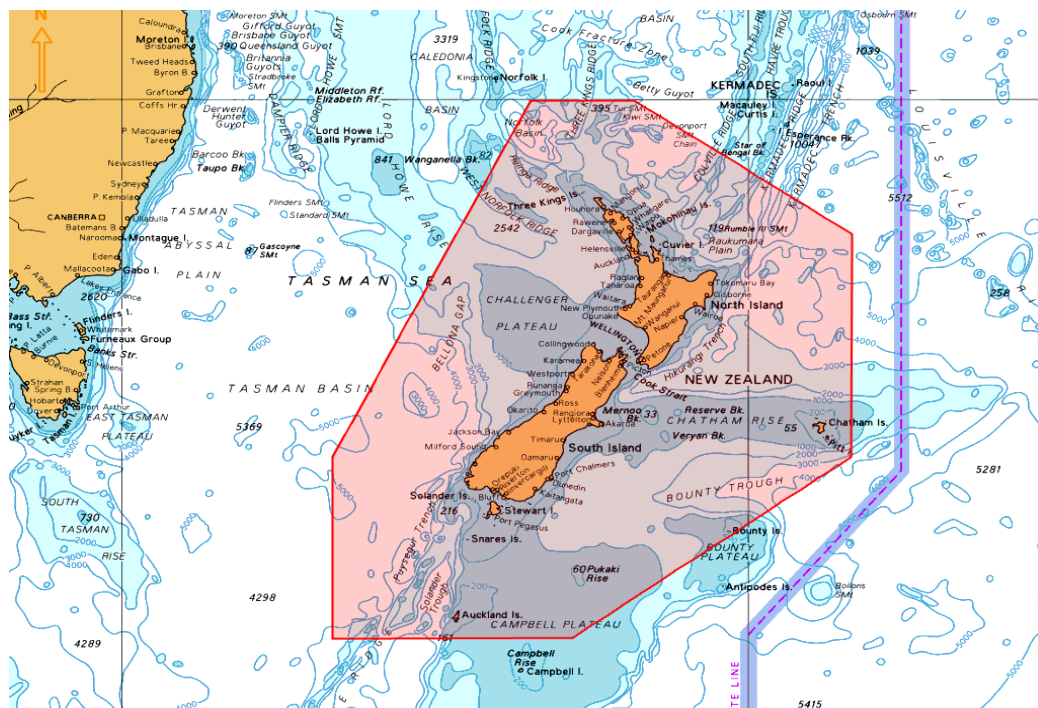
1. Background:

The limits of NAVAREA XIV are given as:

69° 37'S, 160° 00'E (Antarctic coast) to  
45° 00'S, 160° 00'E to  
29° 00'S, 170° 00'E to  
00° 00'N, 170° 00'E to  
00° 00'N, 120° 00'W to  
73° 50'S, 120° 00'W (Antarctic coast)

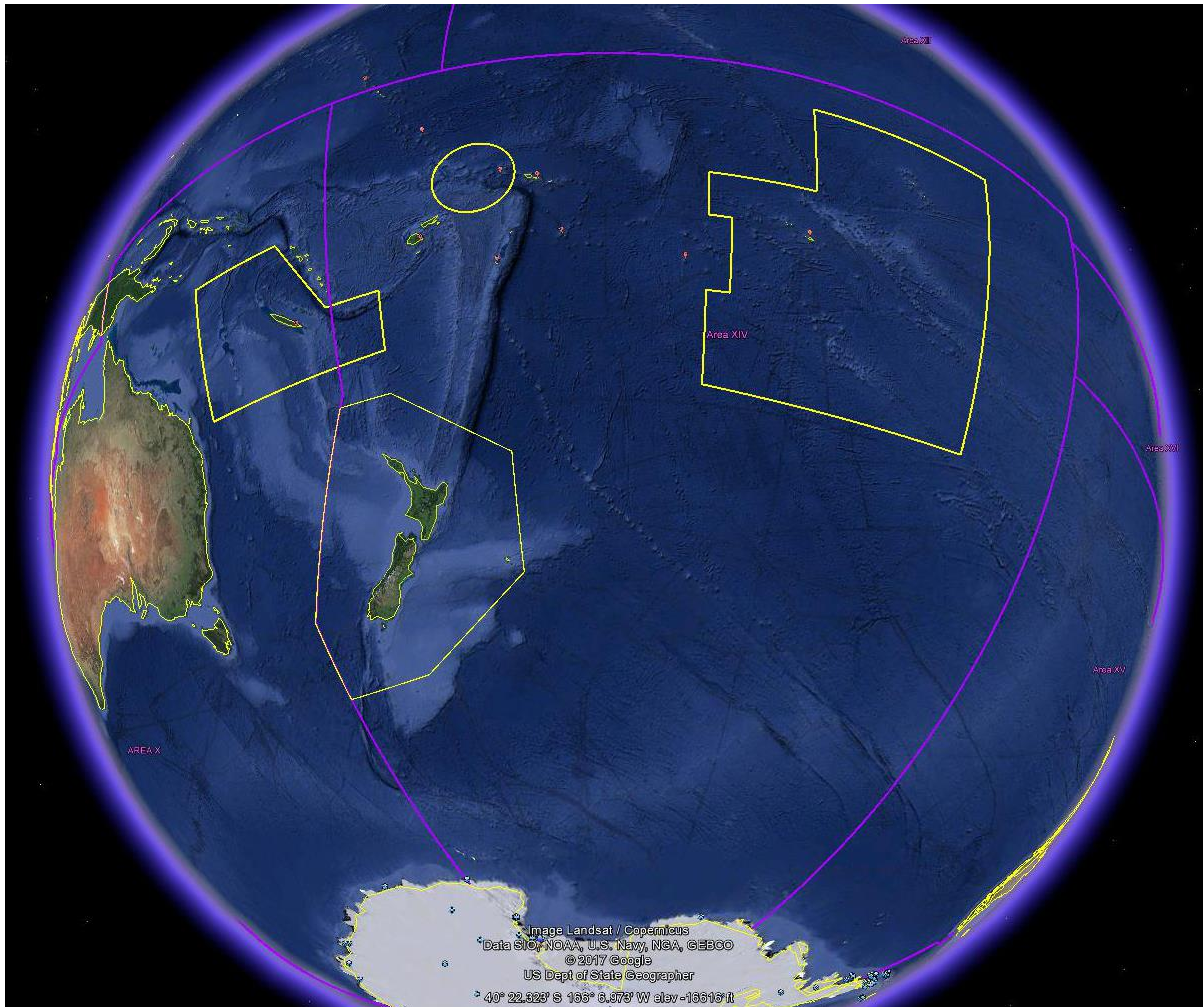


New Zealand Coastal Warning Area 'Z' is depicted below.



## NAVAREA XIV Report to SWPHC 18

NAVAREA XIV with all Coastal Warning Areas depicted below.



NAVAREA XIV and New Zealand Coastal Warnings are broadcast via:

**Taupo Maritime Radio ZLM (Radio Telephony)** at the first scheduled time following receipt and then at the scheduled times as per ALRS Vol 3(2) whilst the warnings are in force or until they have been promulgated by other means; and

### EGC as follows:

**Inmarsat - SafetyNET II service** via the Pacific Ocean Region (POR) and Atlantic Ocean Region – West (AOR-W) satellites, through the Inmarsat Maritime Safety Servers for broadcast to Inmarsat C and Mini C via the Network Control Station (NCS) and to Fleet Safety via the Broadband Global Area Network Satellite Access Station (BGAN SAS). Warnings broadcast on receipt and scheduled at 0900 and 2100 UTC.

**Iridium – SafetyCast service.** In September 2020 New Zealand declared to the IMO Iridium SafetyCast service for Navigational Warnings as “T – Under Trial”, and on 5<sup>th</sup> February 2021 “O – Operational” for Navigational Warnings and SAR related information. All NAVAREA XIV, New Zealand Coastal Navigational Warnings and SAR related information are broadcast in parallel via Inmarsat and Iridium.

## NAVAREA XIV Report to SWPHC 18

Operational Points of Contact for National Co-ordinators within the NAVAREA

COUNTRY	INSTITUTION	TELEPHONE	FACSIMILE	EMAIL
Cook Islands	Ministry of Transport	+682 74530		<a href="mailto:saungaki.rasmussen@cookislands.gov.ck">saungaki.rasmussen@cookislands.gov.ck</a>
French Polynesia	JRCC Tahiti	+689 405 41616	+689 404 23915	<a href="mailto:contact@jrcc.pf">contact@jrcc.pf</a>
Fiji	Maritime Safety Authority Fiji	+679 331 5266	+679 331 3127	<a href="mailto:msi@msaf.com.fj">msi@msaf.com.fj</a> <a href="mailto:skumar@msaf.com.fj">skumar@msaf.com.fj</a>
Kiribati	Ministry of Information, Communications, Transport & Tourism Development	(W) +686 74026003 Ext 232 (M) +686 73022727		<a href="mailto:eritaia.tauro@mcttd.gov.ki">eritaia.tauro@mcttd.gov.ki</a>
New Caledonia	MRCC New Caledonia	+687 292121	+687 292 303	<a href="mailto:operations@mrcc.nc">operations@mrcc.nc</a>
New Zealand	RCCNZ	+64 4 577 8030	+64 4 577 8038	<a href="mailto:rccnz@maritimenz.govt.nz">rccnz@maritimenz.govt.nz</a>
Niue	Ministry of Transport	+683 888 6983		<a href="mailto:lynsey.talagi@mail.gov.nu">lynsey.talagi@mail.gov.nu</a>
Samoa	Ministry of Works, Transport & Infrastructure	(W) +685 22141 (M) +685 770 7794	+685 22671	<a href="mailto:hoe.viali@mwti.gov.ws">hoe.viali@mwti.gov.ws</a> <a href="mailto:anastacia.amoa@mwti.gov.ws">anastacia.amoa@mwti.gov.ws</a> <a href="mailto:makerita.atonio@mwti.gov.ws">makerita.atonio@mwti.gov.ws</a> <a href="mailto:tapaga.collins@mwti.gov.ws">tapaga.collins@mwti.gov.ws</a>
Tonga, Kingdom of	Ministry of Infrastructure, Marine & Ports Division	(W) +676 22 555 (M) +676 7786157	+676 42 467	<a href="mailto:sioeli.fifita@moi.gov.to">sioeli.fifita@moi.gov.to</a> <a href="mailto:marineport@moi.gov.to">marineport@moi.gov.to</a>
Tuvalu		+688 20055		<a href="mailto:taasi.pittoi@gmail.com">taasi.pittoi@gmail.com</a>
Wallis & Futuna	MRCC New Caledonia	+687 292121	+687 292 303	<a href="mailto:operations@mrcc.nc">operations@mrcc.nc</a>

### 2. Comments:

The NAVAREA XIV Coordinator six monthly communications checks with the nine National Coordinators (outside of New Zealand) continue, and this has proven to be an effective method to ensure contact details are correct.

### NAVAREA XIV EGC Messages

2018	2019	2020
190	161	225

Subjects of NAVAREA XIV Warnings included casualties to AtoNs, malfunction of shore-based MSI services, pipe and cable laying operations, rocket launching and space debris, tsunami threats, dredging operations, drifting hazards, shoals located, wrecks located, drilling operations, gunnery exercises and submarine volcanic activity and border restrictions due COVID19. There was an increase in the total NAVAREA XIV Warnings during 2020 mostly as a consequence of COVID19 related notification of border restrictions throughout the South Pacific, and an increase in satellite launching operations by the New Zealand based company Rocket Lab.

## NAVAREA XIV Report to SWPHC 18

### MSI Received from Coastal States within NAVAREA XIV

Coastal State/Country	Number of MSI messages	Topics/Subjects of messages	MSI Courses Attended
Cook Islands	2	AtoNs	2010, 2014, 2016, 2018
Fiji	36	AtoNs, Cable laying ops, Pipeline installations, Wrecks, Tropical cyclone damage	2010, 2014, 2016, 2018
French Polynesia	60	Military exercises, Space debris, Drifting hazards, AtoNs, COVID restrictions	2010, 2014, 2016, 2018
New Caledonia	20	Military exercises, Drifting hazard, COVID restrictions	2010, 2014, 2016, 2018
Niue	4	AtoNs, COVID restrictions	2016, 2018
Samoa	8	AtoNs, Wrecks, COVID restrictions	2016, 2018
Tonga	18	AtoNs, Military exercises, COVID restrictions	2010, 2014, 2016, 2018
Tuvalu	0		2016, 2018
Wallis & Futuna	Covered by New Caledonia	COVID restrictions	Covered by New Caledonia
Kiribati	1	AtoN correspondence	2016, 2018

### 3. National reports

Templates sent to 10 National Coordinators in NAVAREA XIV. Six completed reports received and appended to this report. Any reports not appended should be at Annex C of the respective SWPHC National Reports. National Coordinators were given the option of using a new draft Word template for their MSI reports, or to continue including this data in Annex C of their National Reports. The new template reflects the introduction of new recognised GMDSS mobile satellite service providers. Feedback has been positive from those National Coordinators who chose to use this template and the SWPHC is invited to consider whether this format is appropriate for future reports.

### 4. NAVTEX Coverage:

N/A

### 5. Operational Issues:

#### New Recognised GMDSS Mobile Satellite Service Providers

As noted in the NAVAREA XIV Report to SWPHC17, until recently the Inmarsat C system was the sole recognised GMDSS mobile satellite service for the shore-ship delivery of MSI and SAR Information. Following IMO approval, these GMDSS functions are now available via the Inmarsat Fleet Safety system (regional coverage presently but global coverage planned), and the Iridium SafetyCast service.

The BeiDou Message Service System (BDMSS) is undergoing assessment by IMSO for consideration as a recognised GMDSS mobile satellite service provider. The BDMSS is proposed as a regional service for the Asian and Western Pacific Ocean regions at this stage.

New Zealand is broadcasting all NAVAREA XIV and New Zealand Coastal Warnings via Inmarsat Fleet Safety and Iridium SafetyCast service.



## NAVAREA XIV Report to SWPHC 18

All certified<sup>1</sup> NAVAREA Coordinators, and National Coordinators providing MSI to Coastal Warning Areas via recognised mobile satellite service providers, and intending to sign service agreements with Iridium LLC will need to register<sup>2</sup> with Iridium. To register, each authority requires an International EGC Certificate of Authorization issued by the Chair of the IMO EGC Coordinating Panel for broadcast of MSI (navigational warnings meteorological forecasts and warnings) and SAR related information if also providing this service.

### National Coordinators

As per National Coordinator reports.

#### 6. Capacity Building:

The global COVID-19 pandemic has significantly limited the opportunities for physical meetings and workshops. Noting this, and in liaison with the SWPHC Capacity Building Coordinator, as part of our November 2020 communications checks the NAVAREA XIV Coordinator offered targeted remote training (telephone/video conference etc) to any National Coordinators who identified specific training needs. No training gaps were identified but this continues to be an option.

#### 7. Other Activities:

The NAVAREA XIV Coordinator attends meetings of the WWNWS SC, IHO DRGW, IMO EGC Coordinating Panel and NCSR, and is a member of the WWNWS EGC API WG and S-124NW PT. In 2020 MSC103 was also attended. All participation at these meetings was via remote video conferencing.

#### 8. NAVAREA Website:

NAVAREA XIV warnings in force: [www.maritimenz.govt.nz/navarea](http://www.maritimenz.govt.nz/navarea)

During 2020 the NAVAREA XIV web page received 26,400 page views.

The NAVAREA XIV website is updated in near-real time. The date and time of the last update is displayed on the web page.

---

<sup>1</sup> Information providers (Maritime Safety Information Providers and SAR Information Providers) require certification from the IMO EGC Coordinating Panel.

<sup>2</sup> Once a certified information provider has signed a service agreement with a relevant mobile satellite service provider, the information provider becomes “registered” to provide information via that satellite service provider.

9. NAVAREA Contact Information:

NAVAREA XIV Coordinator  
Maritime New Zealand  
RCCNZ  
41 Percy Cameron Street, Avalon Studios Level 1  
PO Box 30050  
LOWER HUTT 5040  
New Zealand  
Tel: +64 4 577 8030 (24 hours)  
FAX: +64 4 577 8038 (24 hours)  
E-mail [rccnz@maritimenz.govt.nz](mailto:rccnz@maritimenz.govt.nz) (24 hours)  
Website: <http://www.maritimenz.govt.nz/navarea>

10. Actions requested:

SWPHC to note the information provided.

11. Synopsis:

This report highlights the MSI activities for the year 2020. The introduction of new recognised GMDSS satellite service providers now, and intended for the future will bring both challenges and opportunities that MSI and SAR Information Providers will need to address.

New Zealand is actively involved with a number of IMO and IHO Sub-Committees and Working Groups, and capacity building in the SWP region for MSI, charting and hydrography through the Regional Hydrographic Commission and the NZ Aid Programme, PRNI, and maritime safety and SAR through the Pacific Community (SPC) and PMSP. The NAVAREA XIV Coordinator is regularly engaging with the National Coordinators in NAVAREA XIV in an effort to improve communications and ensure contact details are correct.

## National Reports to Regional Hydrographic Commissions

Regional Hydrographic Commissions (RHCs) are intended to provide, under the auspices of the International Hydrographic Organization regional, coordination with regard to nautical information, hydrographic surveys, production of nautical charts and documents, training, technical cooperation and hydrographic capacity building projects.

The RHCs are required to report to the International Hydrographic Conference on activities, hydrographic capacity and requirements within their region. They are also required to submit an annual report to the International Hydrographic Bureau indicating progress made against the key targets in the IHO Work Programme. To assist in the RHC gathering information on the activities within their area of responsibility a number of reports are required from National Organizations.

Details of these reporting requirements are available in IHO Resolution 2/1997 as amended which is available from the IHO Website; [https://iho.int/iho\\_pubs/misc/M3-E-AUGUST18.pdf](https://iho.int/iho_pubs/misc/M3-E-AUGUST18.pdf)

Part of the reporting requirements relate to Maritime Safety Information services. This document is provided to assist National Coordinators in capturing the required information and is based on the current approved World Wide Navigational Warning Service Template.

On completion of the form National Coordinators are requested to pass the information to the relevant NAVAREA Coordinator for their Region.

### Associated NAVAREA Coordinator

(Details should be completed by NAVAREA Coordinator prior to distributing form)

NAVAREA Region	XIV
Primary Point of Contact	Dave Wilson and Conrad Reynecke
Organization	Rescue Coordination Centre New Zealand
Email Address	rccnz@maritimenz.govt.nz
Telephone No.	+64 4 5778030
Facsimile No.	+64 4 5778038
Postal Address	Rescue Coordination Centre New Zealand 41 Percy Cameron Street, Avalon Studios Level 1 PO Box 30050, Lower Hutt 5040 Wellington New Zealand

*[Guidance on what information to be included can be obtained by clicking the mouse in the relevant fields in the form. If additional guidance or assistance in completing the form is required then the National Coordinator should contact the relevant NAVAREA Coordinator.]*

**National Maritime Safety Information  
(MSI) Self Assessment**

New Zealand

**1. Maritime Area**

New Zealand Coastal Warning Area Z is a defined polygon for the purpose of broadcasting NZ Coastal Navigation Warnings via Inmarsat SafetyNET.

The limits of the area are: 30-00S 169-30E to 30-00S 174-30E to 36-00S 175-00W to 45-00S 175-00W to 51-30S 171-30E to 51-30S 160-00E to 45-00S 160-00E

**2. Operational Points of Contact for the National Coordinator**

<b>Institution/Organization</b>	<b>Telephone</b>	<b>Facsimile</b>	<b>Email</b>
RCCNZ	+64 4 5778030	+64 4 5778038	rccnz@maritimenz.govt.nz
Click or tap here to enter text.	Click or tap here to enter text.	Click or tap here to enter text.	Click or tap here to enter text.
Click or tap here to enter text.	Click or tap here to enter text.	Click or tap here to enter text.	Click or tap here to enter text.
Click or tap here to enter text.	Click or tap here to enter text.	Click or tap here to enter text.	Click or tap here to enter text.

**3. GMDSS Master Plan**

Is the plan up to date?      Yes      Date of last update      24/08/2020

**MSI – National Coordinator Procedures**

Do you have access to IMO/IHO/WMO Joint Manual on MSI?      Yes

Do you follow the suggested warning format in Joint Manual?      Yes

Have you or your staff received MSI Training?      Yes

Are you aware of your NAVAREA Coordinator?      Yes

Do you pass MSI to NAVAREA Coordinator?      Yes

Do you request NAVAREA Coordinator broadcast MSI?      Yes



#### 4. MSI Broadcast Service

MSI Broadcast Service				
Status of Service	NAVTEX	EGC - Inmarsat	EGC - Iridium	HF NBDP
Interface	N Click or tap here to enter text.	O SafetyNET II	O SafetyCast	N Click or tap here to enter text.
If "P" expected date of operation	Click or tap to enter a date.	Click or tap to enter a date.	Click or tap to enter a date.	Click or tap to enter a date.
Coastal Warning Area (If applicable)	Click or tap here to enter text.	Z	Z	
Broadcast Schedule	Click or tap here to enter text.	0900 & 2100 UTC	0900 & 2100 UTC	Click or tap here to enter text.
Frequencies	Click or tap here to enter text.			Click or tap here to enter text.

O = Operational  
T = Under Trial  
P = Planned or to be decided  
N = No

*Specifics of equipment used and software version with date updated*

Equipment Type for Local and Coastal Area	Software Version	Date of Latest Update
SafetyNET II	Not available	Click or tap to enter a date.
SafetCast	Version: 29.0.2	2020
Sailor 6150 Mini-C	Firmware V1.07	Click or tap to enter a date.

#### Summary of National Maritime Safety Information Issued

2 years prior 2018		Previous year 2019		This year 2020	
Total	Average Elapsed Time	Total	Average Elapsed Time	Total	Average Elapsed Time
253	18 Mins	206	10 Mins	225	14 Mins

#### 5. Does your Administration broadcast MSI through other means?

New Zealand Coastal Navigation Warnings are broadcast via Taupo Maritime Radio ZLM (Radio Telephony) at the first scheduled time following receipt and then at the scheduled times as per ALRS Vol 3(2) whilst the warnings are in force or until they have been promulgated by other means.

#### 6. Operational Issues

New Zealand has declared Iridium GMDSS services operational for NAV and SAR

#### 7. Contingency Planning

1. Technical - Maritime New Zealand (Kordia/Taupo Maritime Radio) uses the Inmarsat SafetyNET II and Iridium SafetyCast systems to broadcast Navigational Warnings. The versatility of using web portals, in addition to Kordia having back-up servers, reduces the risk of a New Zealand-based single point of failure. In the event of a total system failure at Kordia, web access is available via RCC New Zealand which also has back-up servers and multiple redundant systems in place.
2. Physical - In the event of a building failure (fire, etc) RCC New Zealand has access to a remote Disaster Recovery site where the provision of WWNWS can continue.

## **8. Capacity Building**

NZ National Coordinator provides instructors to every MSI Capacity Building Course in the SWP region. Training for NZ National Coordinator staff is conducted in-house. SWPHC is planning a regional MSI workshop in Fiji 2021 (dependant on status of international borders).

## **9. Other Activities**

RCCNZ attends WWNWS, NCSR, DRWG and JWG.

## **10. National Maritime Website**

[www.maritimenz.govt.nz/navarea](http://www.maritimenz.govt.nz/navarea)

## **11. Recommendations**

Nil

## **12. Summary**

This self-assessment report highlights the MSI activities for the year 2020. NZ has declared Iridium SafetyCast service for NAV and SAR as Operational, and is actively involved with a number of IMO and IHO Sub-Committees and Working Groups; and capacity building in the South West Pacific region.

### National Reports to Regional Hydrographic Commissions

Regional Hydrographic Commissions (RHCs) are intended to provide, under the auspices of the International Hydrographic Organization regional, coordination with regard to nautical information, hydrographic surveys, production of nautical charts and documents, training, technical cooperation and hydrographic capacity building projects.

The RHCs are required to report to the International Hydrographic Conference on activities, hydrographic capacity and requirements within their region. They are also required to submit an annual report to the International Hydrographic Bureau indicating progress made against the key targets in the IHO Work Programme. To assist in the RHC gathering information on the activities within their area of responsibility a number of reports are required from National Organizations.

Details of these reporting requirements are available in IHO Resolution 2/1997 as amended which is available from the IHO Website; [https://iho.int/iho\\_pubs/misc/M3-E-AUGUST18.pdf](https://iho.int/iho_pubs/misc/M3-E-AUGUST18.pdf)

Part of the reporting requirements relate to Maritime Safety Information services. This document is provided to assist National Coordinators in capturing the required information and is based on the current approved World Wide Navigational Warning Service Template.

On completion of the form National Coordinators are requested to pass the information to the relevant NAVAREA Coordinator for their Region.

#### Associated NAVAREA Coordinator

(Details should be completed by NAVAREA Coordinator prior to distributing form)

NAVAREA Region	XI
Primary Point of Contact	Notices to Mariners Office
Organization	Hydrographic and Oceanographic Department
Email Address	tuho@jodc.go.jp jcg-tuho@navarea11.go.jp
Telephone No.	+81-3-3595 3571
Facsimile No.	+81-3-3595 3647
Postal Address	Japan Coast Guard 3-1-1, Kasumigaseki, Chiyoda-ku, Tokyo 135-8932

*[Guidance on what information to be included can be obtained by clicking the mouse in the relevant fields in the form. If additional guidance or assistance in completing the form is required then the National Coordinator should contact the relevant NAVAREA Coordinator.]*

**National Maritime Safety Information  
(MSI) Self Assessment**

Kiribati

**1. Maritime Area**

Kiribati Coastal Navigational Warning area covers Kiribati waters including 200 nautical miles exclusive economic zone (EEZ) of Kiribati for broadcasting of navigational warnings via Coast Radio Station (CRS) on VHF/HF.

**2. Operational Points of Contact for the National Coordinator**

Institution/Organization	Telephone	Facsimile	Email
MICTTD, Marine Division	+686 74026003	Click or tap here to enter text.	eritaia.tauro@micttd.gov.ki
Click or tap here to enter text.	+686 73022727 +686 73020363	Click or tap here to enter text.	Erry.tauro@gmail.com
Click or tap here to enter text.	Click or tap here to enter text.	Click or tap here to enter text.	Click or tap here to enter text.
Click or tap here to enter text.	Click or tap here to enter text.	Click or tap here to enter text.	Click or tap here to enter text.

**3. GMDSS Master Plan**

Is the plan up to date?      No      Date of last update      Click or tap to enter a date.

**MSI – National Coordinator Procedures**

Do you have access to IMO/IHO/WMO Joint Manual on MSI?      Yes

Do you follow the suggested warning format in Joint Manual?      Yes

Have you or your staff received MSI Training?      Yes

Are you aware of your NAVAREA Coordinator?      Yes

Do you pass MSI to NAVAREA Coordinator?      Yes

Do you request NAVAREA Coordinator broadcast MSI?      Yes

**4. MSI Broadcast Service**

MSI Broadcast Service				
	NAVTEX	EGC - Inmarsat	EGC - Iridium	HF NBDP
Status of Service	N	N	N	N
Interface	Click or tap here to enter text.	Choose an item.	Choose an item.	Click or tap here to enter text.
If "P" expected date of operation	Click or tap to enter a date.	Click or tap to enter a date.	Click or tap to enter a date.	Click or tap to enter a date.
Coastal Warning Area (If applicable)	Click or tap here to enter text.	Choose an item.	Choose an item.	
Broadcast Schedule	Click or tap here to enter text.	Click or tap here to enter text.	Click or tap here to enter text.	Click or tap here to enter text.
Frequencies	Click or tap here to enter text.			Click or tap here to enter text.

O = Operational  
T = Under Trial  
P = Planned or to be decided  
N = No

*Specifics of equipment used and software version with date updated*

Equipment Type for Local and Coastal Area	Software Version	Date of Latest Update
Maritime VHF & HF Radio	Click or tap here to enter text.	Click or tap to enter a date.
Click or tap here to enter text.	Click or tap here to enter text.	Click or tap to enter a date.
Click or tap here to enter text.	Click or tap here to enter text.	Click or tap to enter a date.

#### Summary of National Maritime Safety Information Issued

2 years prior 2018		Previous year 2019		This year 2020	
Total	Average Elapsed Time	Total	Average Elapsed Time	Total	Average Elapsed Time
136	Click or tap here to enter text. Mins	138	Click or tap here to enter text. Mins	148	Click or tap here to enter text. Mins

#### 5. Does your Administration broadcast MSI through other means?

For Kiribati MSI broadcast service, Navigational warning / safety, Met information and SAR information through radio communication VHF channel 16 and HF 6215 kHz to international and domestic vessels. Broadcasting is carried by Marine Guard via VHF & HF daily at 0803,1603.

#### 6. Operational Issues

Radio Communication Coverage, sometimes VHF & HF communication is poor at far distances like Tarawa to Banaba Island and the Line and Phoenix Groups.

#### 7. Contingency Planning

MSI messages sent to the NAVAREA XIV and NAVAREA XI Coordinator by email are promulgated.

#### 8. Capacity Building

Kiribati has attended previous SWPHC MSI courses and trainings. Further MSI training/Capacity Building is required.

#### 9. Other Activities

Click or tap here to enter text.

#### 10. National Maritime Website

[www.micttd.gov.ki](http://www.micttd.gov.ki)

#### 11. Recommendations

Click or tap here to enter text.

#### 12. Summary

This self-assessment report highlights the MSI activities for the previous years and year 2019. MSI database was first established in 2017 after attending MSI training in NZ, hence we have the MSI record for 2017, 2018 and 2019 only as stated above. Marine Guard (Kiribati) is very actively involved in providing MSI services to domestic and international vessels within the Kiribati coastal areas through VHF and HF radio communications.

**National Maritime Safety Information  
(MSI) Self Assessment**

FRANCE

JRCC TAHITI - FRENCH POLYNESIA

**1. Maritime Area**

French Polynesian Area R (in NAVAREA XIV) is a defined area for the purpose of broadcasting Coastal Navigation Warnings via Inmarsat SafetyNET

The limits of the area are: 04-00S 149-00W to 04-00S 132-00W to 31-00S 132-00W to 31-00S 158-00W to 23-30S 156-00W to 17-00S 156-00W to 13-00S 158-00W to 13-00S 149-00W

**2. Operational Points of Contact for the National Coordinator**

Institution/Organization	Telephone	Facsimile	Email
JRCC TAHITI	+689 40 54 16 16	+689 40 42 39 15	contact@jrcc.pf

**3. GMDSS Master Plan**

Is plan up to date? Yes

Date of last update; 30/07/2018

**MSI - National Coordinator Procedures**

Do you have access to IMO/IHO/WMO Joint Manual on MSI? Yes

Do you follow the suggested warning format in Joint Manual? Yes

Have you or your staff received MSI Training? Yes

Are you aware of your NAVAREA Coordinator? Yes

Do you pass MSI to NAVAREA Coordinator? Yes

Do you request NAVAREA Coordinator broadcast MSI? Yes

[Remarks about MSI - National Coordinator Procedures]

MSI Broadcast Service					
NAVTEX	SafetyNET			HF NBDP	
	NAV	MET	SAR		
<input type="checkbox"/>	<input checked="" type="checkbox"/>	<input type="checkbox"/>	<input checked="" type="checkbox"/>	<input type="checkbox"/>	<input type="checkbox"/>

Complete Section 4

*Specifics of equipment used and software version with date updated*

Equipment Type for Ports and Local Area	Software Version	Date of Latest Update
Thrane & Thrane easyMail	V1.15	Build 0027

**Summary of National Maritime Safety Information Issued**

2018		2019		2020	
Total	Average Elapsed Time	Total	Average Elapsed Time	Total	Average Elapsed Time
37	<input type="text"/> Mins	37	<input type="text"/> Mins	92	<input type="text"/> Mins



#### 4. International SafetyNET Service

Does your Administration broadcast MSI through the International SafetyNET Service? Yes

Is it Operational now? Yes

If not indicate the expected date of operation

NAV/MET Area	Type of Information	Country	LES/LESO	Ocean Region/LES ID	MSI Coastal Warning Area <sup>(1)</sup> (if applicable)	Broadcast Schedule (UTC)	Status of Implementation
	NAV <sup>(2)</sup>	* NZ	Aussaguel at Y	POR	R	0250,1450	Operational
	MET <sup>(3)</sup>	**					
	SAR <sup>(4)</sup>	FR	Aussaguel	POR			Operational

(1) Provide a diagram showing limits of Coastal Warning Areas, including B1 Codes

(2) NAV = Navigational Warnings

(3) MET = Meteorological Warnings

(4) SAR = Search and Rescue Alerts

\* - NAVAREA Coordinator responsible for the Area

\*\* - The issuing service nominated by WMO for METAREA services, responsible for the area

#### 5. NAVTEX Coverage

French Polynesia ( JRCC TAHITI) does not broadcast coastal warnings via NAVTEX.

NAVTEX Coast Station	Frequency	Position of Antenna	Range (NM)	B1 Character	Transmission Times	Language

#### 6. HF Narrow Band Direct Printing (NBDP) MSI Broadcast Service

Does your Administration broadcast MSI through HF NBDP?

No

Is it Operational now?

If not indicate the expected date of operation

Country	NBDP Coast Station	Position	Frequency Band	Schedule (UTC)	Status
			4MHz (4210KHz)		
			6MHz (6425KHz)		
			8MHz (8416.5KHz)		
			12MHz (12579KHz)		
			16MHz (16806.5KHz)		
			19MHz (19680.5KHz)		
			22MHz (22376 KHz)		
			26MHz (26100.5 KHz)		

#### 7. Does your Administration broadcast MSI through other means?

In addition to SafetyNET broadcasts, JRCC Tahiti also broadcast navigational warnings on VHF, MF and HF if necessary.

#### 8. Operational Issues

None

**9. Contingency Planning**

[Provide details on contingency plans for the provision of MSI if normal methods are unable to be used]

**10. Capacity Building**

[Provide details on any capacity building recently completed, underway or planned for the provision of MSI. This includes infrastructure and training]

**11. Other Activities**

[Provide details on any other relevant activities, completed, underway or planned]

**12. National Maritime Website**

[www.jrcc.pf/infonaut](http://www.jrcc.pf/infonaut)

**13. Recommendations**

None

**14. Summary**

[Include a summary of MSI services if relevant]

**15. Remarks/Additional Information**

[Provide any remarks or additional information]

**16. Attachments**

[List any attachments including diagrams of coverage areas that are included with this Form]

**National Maritime Safety Information  
(MSI) Self Assessment**

Tonga

**1. Maritime Area**

The exclusive economic zone of the Kingdom shall be the area beyond and adjacent to the territorial sea of the Kingdom out to a line every point of which is at a distance of 200 nautical miles from the nearest point of the baselines.

**2. Operational Points of Contact for the National Coordinator**

Institution/Organization	Telephone	Facsimile	Email
Marine and Port Division (MPD)	+676 7786157	Click or tap here to enter text.	sioeli.fifita@moi.gov.to
Click or tap here to enter text.	+676 22555	+676 42467	marineport@moi.gov.to
Click or tap here to enter text.	Click or tap here to enter text.	Click or tap here to enter text.	Click or tap here to enter text.
Click or tap here to enter text.	Click or tap here to enter text.	Click or tap here to enter text.	Click or tap here to enter text.

**3. GMDSS Master Plan**

Is the plan up to date?      No      Date of last update      Click or tap to enter a date.

**MSI – National Coordinator Procedures**

Do you have access to IMO/IHO/WMO Joint Manual on MSI?      Yes

Do you follow the suggested warning format in Joint Manual?      Yes

Have you or your staff received MSI Training?      Yes

Are you aware of your NAVAREA Coordinator?      Yes

Do you pass MSI to NAVAREA Coordinator?      Yes

Do you request NAVAREA Coordinator broadcast MSI?      Yes

**4. MSI Broadcast Service**

MSI Broadcast Service				
Status of Service	NAVTEX	EGC - Inmarsat	EGC - Iridium	HF NBDP
	N	N	N	N
Interface	Click or tap here to enter text.	Choose an item.	Choose an item.	Click or tap here to enter text.
If "P" expected date of operation	Click or tap to enter a date.	Click or tap to enter a date.	Click or tap to enter a date.	Click or tap to enter a date.
Coastal Warning Area (If applicable)	Click or tap here to enter text.	Choose an item.	Choose an item.	
Broadcast Schedule	Click or tap here to enter text.	Click or tap here to enter text.	Click or tap here to enter text.	Click or tap here to enter text.
Frequencies	Click or tap here to enter text.			Click or tap here to enter text.

O = Operational  
T = Under Trial  
P = Planned or to be decided  
N = No

*Specifics of equipment used and software version with date updated*

Equipment Type for Local and Coastal Area	Software Version	Date of Latest Update
VHF and MF/HF	Click or tap here to enter text.	Click or tap to enter a date.
Click or tap here to enter text.	Click or tap here to enter text.	Click or tap to enter a date.
Click or tap here to enter text.	Click or tap here to enter text.	Click or tap to enter a date.

#### Summary of National Maritime Safety Information Issued

2 years prior 2018		Previous year 2019		This year 2020	
Total	Average Elapsed Time	Total	Average Elapsed Time	Total	Average Elapsed Time
3	Click or tap here to enter text. Mins	4	Click or tap here to enter text. Mins	19	756 Mins

#### 5. Does your Administration broadcast MSI through other means?

Once MSI is received by Marine and Port Division (MPD), the message is initially send by email to Tonga Coastal Radio Station, Rescue Coordination Centre New Zealand, and Land and Information New Zealand for promulgation. Tonga Coastal Radio Station broadcasted the received MSI nav warning received from MPD as soon as they receive it via VHF Ch 16 & 12 and MF/HF radio on 2182 & 6215 MHz and at the following time 0834, 1034, 1334, 1634 together with met warning.

#### 6. Operational Issues

National MSI Coordinator work only from 0830 hr to 1630 hr on working days, that is from Monday to Friday except public holidays. This means that MSI nav warning may not receive by the National Coordinator on non working hours and days, and therefore any urgent information will not be broadcasted until it is received and relay by National Coordinator.

#### 7. Contingency Planning

The procedure provided on MPD Quality Manual that if the initial means of sending MSI to broadcaster is not available, there are phone numbers that they can be contacted on. There have been cases were it was urgent and Masters of domestic vessels are contacted by phone to inform of the MSI's who have not yet formally podcasted.

#### 8. Capacity Building

The most recent MSI training that MPD take part to was the Wellington training in mid 2018

#### 9. Other Activities

Marine and Port Division just bought their own VHF and MF/HF radio to be stationed at the head office in Taufa'ahau Tupou IV Domestic wharf. This will enable MPD to monitor broadcast MSI navigational warning and probably establish a new unit within MPD for MSI and AtoN.

#### 10. National Maritime Website

[www.infrastructure.gov.to](http://www.infrastructure.gov.to)

#### 11. Recommendations

Nil

#### 12. Summary

Marine and Port Division is currently the responsible authority for provision of Maritime Safety Information for Ports, Local, and National Areas via Tonga Coastal Radio Station and NavArea XIV via RCCNZ. MSI is just a portion of the bigger responsibility of the technical unit of Marine and Port Division that a very small percentage of time and effort spend on it due to lack of staff and multiple task by responsible officer.

**National Maritime Safety Information  
(MSI) Self Assessment**

Fiji

**1. Maritime Area**

Fiji Coastal Navigational Warning area covers Fiji waters including 200 nautical miles exclusive economic zone (EEZ) of Fiji.

**2. Operational Points of Contact for the National Coordinator**

Institution/Organization	Telephone	Facsimile	Email
Maritime Safety Authority of Fiji (MSAF)	+679 331 5266	+679 331 3127	msi@msaf.com.fj
Click or tap here to enter text.	Click or tap here to enter text.	Click or tap here to enter text.	skumar@msaf.com.fj
Click or tap here to enter text.	Click or tap here to enter text.	Click or tap here to enter text.	sbulimetuira@msaf.com.fj
Click or tap here to enter text.	Click or tap here to enter text.	Click or tap here to enter text.	Click or tap here to enter text.

**3. GMDSS Master Plan**

Is the plan up to date?      Yes      Date of last update      21/01/2021

**MSI – National Coordinator Procedures**

Do you have access to IMO/IHO/WMO Joint Manual on MSI?      Yes

Do you follow the suggested warning format in Joint Manual?      Yes

Have you or your staff received MSI Training?      Yes

Are you aware of your NAVAREA Coordinator?      Yes

Do you pass MSI to NAVAREA Coordinator?      Yes

Do you request NAVAREA Coordinator broadcast MSI?      Yes

**4. MSI Broadcast Service**

MSI Broadcast Service				
Status of Service	NAVTEX	EGC - Inmarsat	EGC - Iridium	HF NBDP
	N	N	N	N
Interface	Click or tap here to enter text.	Choose an item.	Choose an item.	Click or tap here to enter text.
If "P" expected date of operation	Click or tap to enter a date.	Click or tap to enter a date.	Click or tap to enter a date.	Click or tap to enter a date.
Coastal Warning Area (If applicable)	Click or tap here to enter text.	Choose an item.	Choose an item.	
Broadcast Schedule	Click or tap here to enter text.	Click or tap here to enter text.	Click or tap here to enter text.	Click or tap here to enter text.
Frequencies	Click or tap here to enter text.			Click or tap here to enter text.

O = Operational  
T = Under Trial  
P = Planned or to be decided  
N = No



*Specifics of equipment used and software version with date updated*

Equipment Type for Local and Coastal Area	Software Version	Date of Latest Update
VHF Radio with Built-in Class-A DSC and CH70 watch Receiver covering Sea Area 1 and 2.	Click or tap here to enter text.	Click or tap to enter a date.
HF (02) non-compliant GMDSS radio covering Sea Area 3 and 4.	Click or tap here to enter text.	Click or tap to enter a date.
GPS connected to HF/VHF with electronic chart for marine navigation and locating ships in distress.	Time Zero professional v3 for marine navigation and location ships in distress	Click or tap to enter a date.

#### Summary of National Maritime Safety Information Issued

2 years prior 2018		Previous year 2019		This year 2020	
Total	Average Elapsed Time	Total	Average Elapsed Time	Total	Average Elapsed Time
64	Click or tap here to enter text. Mins	50	Click or tap here to enter text. Mins	50	Click or tap here to enter text. Mins

#### 5. Does your Administration broadcast MSI through other means?

MSAF as the competent authority disseminates MSI by e-mail at the first instance. Broadcasting is carried by Suva Coast Radio Station via VHF & HF daily at 0804, 1204, 1604 & 2004 on HF frequency 4372 MHz and 8746 MHz. CRS makes initial call on 6215 MHz before broadcast of MSI. FCNWs are also uploaded on the MSAF website.

#### 6. Operational Issues

Non-compliant HF radio equipment.

#### 7. Contingency Planning

MSI messages sent to the NAVAREA XIV Coordinator, RCCNZ by email. RCCNZ promulgates important messages as NAVAREA XIV Warnings.

#### 8. Capacity Building

MSAF has participated in the past MSI training courses. National MSI Coordinator has been assisting in the delivery of MSI training courses.

#### 9. Other Activities

MSAF National MSI Coordinator attended the IHO Technical Workshop on MSI for Managers in February 2020 in Wollongong, Australia. The purpose of this was to raise awareness on the importance, need and obligations of a country providing an MSI service and establishing itself as a National MSI Coordinator.

#### 10. National Maritime Website

[www.msaf.com.fj](http://www.msaf.com.fj)

#### 11. Recommendations

It is strongly recommended that IHO Capacity Building Fund continues its assistance in the region.

#### 12. Summary

This self-assessment report highlights the MSI activities for the year 2020. Fiji is very actively involved in providing MSI services to the maritime industry such as government ships, navy, port management company, marina operators, pilots, ship owners & agents, maritime academy, primary hydrographic charting authorities etc.

**National Maritime Safety Information  
(MSI) Self Assessment**

SAMOA

**1. Maritime Area**

Samoa Coastal Navigational Warning area covers Samoa's waters including 200 nautical miles exclusive economic zone (EEZ) of Samoa.

**2. Operational Points of Contact for the National Coordinator**

Institution/Organization	Telephone	Facsimile	Email
Ministry of Works, Transport & Infrastructure	+685 21858	+685 21990	hoe.viali@mwti.gov.ws
Ministry of Works, Transport & Infrastructure	+685 770 7794	+685 22141	anastacia.amoa@mwti.gov.ws
Ministry of Works, Transport & Infrastructure	+685 771 7589	+685 28688	makerita.atonio@mwti.gov.ws
Click or tap here to enter text.	Click or tap here to enter text.	Click or tap here to enter text.	

**3. GMDSS Master Plan**

Is the plan up to date?      No      Date of last update      Click or tap to enter a date.

**MSI – National Coordinator Procedures**

Do you have access to IMO/IHO/WMO Joint Manual on MSI?      Yes

Do you follow the suggested warning format in Joint Manual?      Yes

Have you or your staff received MSI Training?      Yes

Are you aware of your NAVAREA Coordinator?      Yes

Do you pass MSI to NAVAREA Coordinator?      Yes

Do you request NAVAREA Coordinator broadcast MSI?      Yes

**4. MSI Broadcast Service**

MSI Broadcast Service				
Status of Service	NAVTEX	EGC - Inmarsat	EGC - Iridium	HF NBDP
	N	N	N	N
Interface	Click or tap here to enter text.	Choose an item.	Choose an item.	Click or tap here to enter text.
If "P" expected date of operation	Click or tap to enter a date.	Click or tap to enter a date.	Click or tap to enter a date.	Click or tap to enter a date.
Coastal Warning Area (If applicable)	Click or tap here to enter text.	Choose an item.	Choose an item.	
Broadcast Schedule	Click or tap here to enter text.	Click or tap here to enter text.	Click or tap here to enter text.	Click or tap here to enter text.
Frequencies	Click or tap here to enter text.			Click or tap here to enter text.

O = Operational  
T = Under Trial  
P = Planned or to be decided  
N = No

*Specifics of equipment used and software version with date updated*

Equipment Type for Local and Coastal Area	Software Version	Date of Latest Update
Maritime VHF & HF Radio	Distributed manually	Click or tap to enter a date.
Local newspaper	Manual & online	Click or tap to enter a date.
Local Navigational Warning	MWTI & SPA Website	Click or tap to enter a date.

#### Summary of National Maritime Safety Information Issued

2 years prior 2018		Previous year 2019		This year 2020	
Total	Average Elapsed Time	Total	Average Elapsed Time	Total	Average Elapsed Time
1	Click or tap here to enter text. Mins	1	Click or tap here to enter text. Mins	3	Click or tap here to enter text. Mins

#### 5. Does your Administration broadcast MSI through other means?

MWTI as the competent authority disseminates MSI by e-mail, text messages as well as websites. Awareness and retrieving relevant MSI information from affected parties such as Ministry of Agriculture and Fisheries and other Maritime Stakeholders are conducted through circular letters issued and interagency Committee meetings.

#### 6. Operational Issues

MWTI continues to provide MSI information via H-Notes to RCCNZ and LINZ for promulgation in Notices to Mariners and any necessary changes on the affected navigational Charts of Samoa. Manatua Cable installation was one of the major issues affecting safety of navigation which was reported to NAVAREA XIV Coordinator in early November 2019 which is still ongoing. Local navigational warnings are also prepared and uploaded on MWTI and Samoa Ports Authority websites.

#### 7. Contingency Planning

MSI messages sent to the NAVAREA XIV Coordinator, RCCNZ by email are promulgated. MWTI representatives have participated in the past MSI training courses conducted during SWPHC meetings as well as several trainings conducted by LINZ.

#### 8. Capacity Building

No more trainings since 2019 but MWTI representatives have participated in the past MSI training courses conducted during SWPHC meetings up to 2018 as well as several trainings conducted by LINZ in 2017. However there is still a need for the continuation of these trainings in the future for upgrading and incorporating any relevant amendments as well as capacity development.

#### 9. Other Activities

LINZ confirmed that all Samoa charts will be updated with the MBES survey data as well as having them renumbered and incorporated with the two-digit Samoa country code instead of New Zealand. We look forward to the implementation of this new arrangement by LINZ for Samoa all navigational charts.

#### 10. National Maritime Website

[www.mwti.gov.ws](http://www.mwti.gov.ws)

#### 11. Recommendations

It is strongly recommended that LINZ continues to assist Samoa through the provision of relevant trainings and publishing updated navigational charts as well as other hydrographic matters that Samoa is unable to provide in the future due to lack of resources

#### 12. Summary

This self-assessment report highlights the MSI activities for the year 2020. MWTI continues to work with relevant Stakeholders to obtain all information affecting hydrography and safety of navigation within Samoa's jurisdiction and communicated via H.Notes to RCCNZ and LINZ for promulgation in Notice to Mariners.