

19th Meeting of the South West Pacific Hydrographic Commission

National Report by



INDONESIA



IHO

International
Hydrographic
Organization

South West Pacific Hydrographic Commission



Main achievements during the year

➤ Conducted 22 Hydrographic Surveys

- 4 Surveys done by survey vessel, 20 surveys done by survey unit
- Coverage area 46.750,73 km²
- Priorities of Surveys Area: Channel, Ports, Archipelagic Sea Lanes (ASL), Busiest Water and Straits

➤ Charts Updated

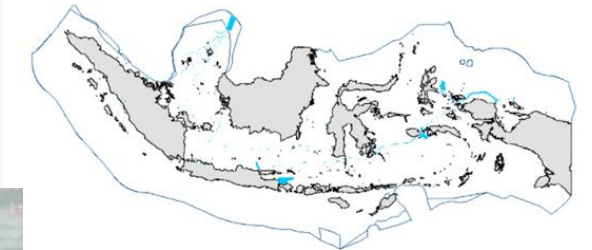
- 128 Number
- 473 cells of ENC

➤ Participated on SAR and natural disaster relief and mitigation

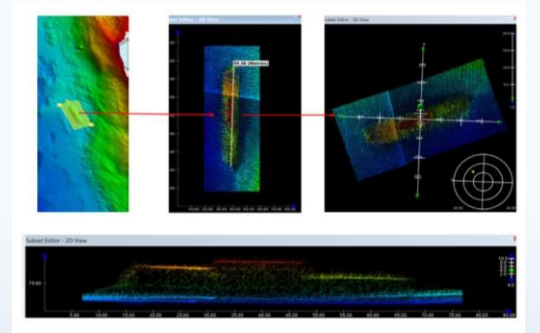
- MV Yunicee ferry accident in Bali Strait (29 June 2021)



Survey Coverage (2021)



MV Yunicee

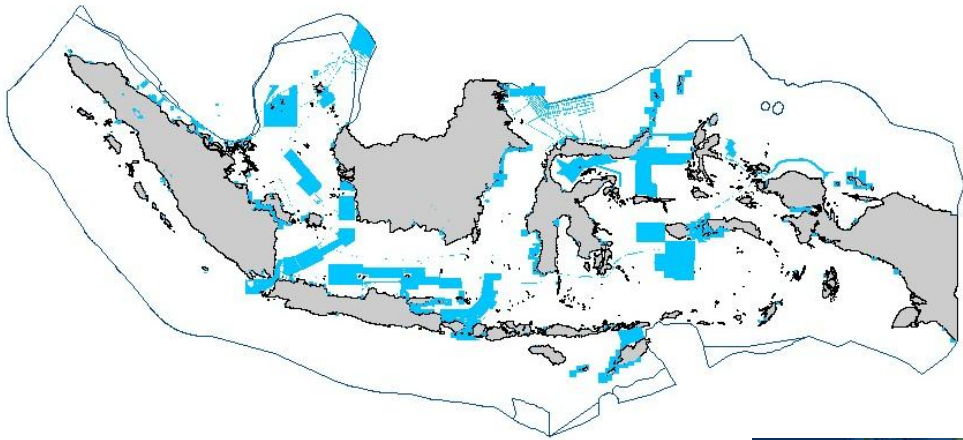


IHO

International
Hydrographic
Organization



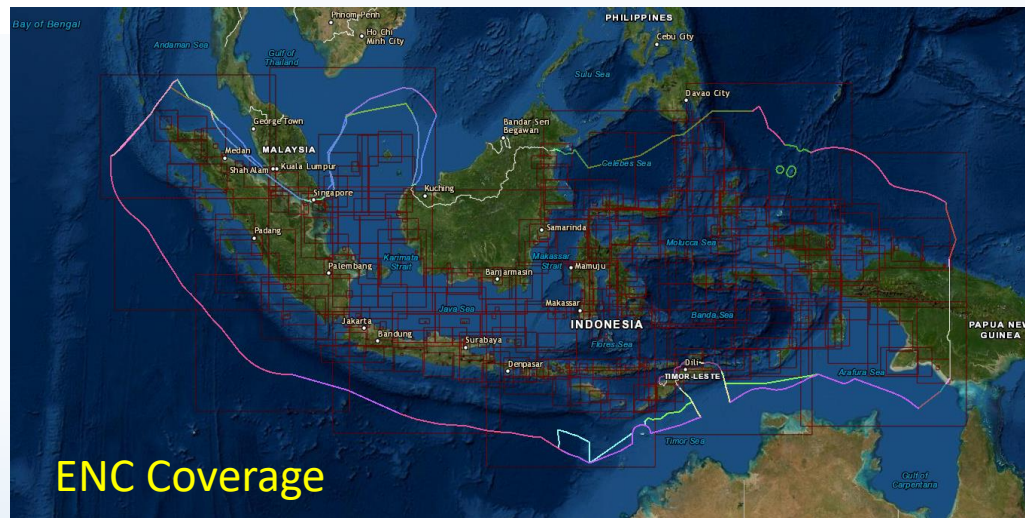
Main achievements during the year



Survey Coverage until 2021



Charts Updated by SDB until 2021: 34,420 Km²



IHO

International
Hydrographic
Organization



Main challenges and/or obstructions

- **Wide of Area**

The wide area of Indonesian waters is one of the challenges for Pushidrosal in formulating an effective strategy to accelerate survey achievements. Pushidrosal collaborates with relevant stakeholders in accelerating the survey

- **Covid-19 Pandemic**

The Covid pandemic has caused limited interaction and the refocusing major survey operation budget for handling the pandemic. It was impacted on survey achievements.

- **Number of Survey Vessel**

Pushidrosal plans to increase the number of coastal and ocean going survey vessels in the next 5 to 10 years as a concrete step to overcome the limitations of survey vessels



Current and Next Coastal Survey Vessel



Next Ocean Going Survey Vessel



IHO

International
Hydrographic
Organization





THANK YOU



IHO

International
Hydrographic
Organization

