



**LET'S KEEP THE SHIPS OFF THE ROCKS!**



# Where does the Academy fit in?

## Strategic Vision - Goals for 2026:

### Goal 1

Marine Aids to Navigation are developed and harmonized through international cooperation and the provision of standards.

### Goal 2

All coastal States have contributed to a sustainable and efficient global network of Marine Aids to Navigation through capacity building and the sharing of expertise.





# IALA Standards – an integrated framework



**S1010**  
ATON PLANNING  
AND SERVICE  
REQUIREMENT



**S1020**  
ATON DESIGN  
AND DELIVERY



**S1030**  
RADIONAVIGATION  
SERVICES



**S1040**  
VESSEL TRAFFIC  
SERVICES



**S1050**  
TRAINING AND  
CERTIFICATION



**S1060**  
DIGITAL  
COMMUNICATION  
TECHNOLOGIES



**S1070**  
INFORMATION  
SERVICES



# The IALA World-Wide Academy

The Academy aims to ensure that all coastal States can fulfil the obligations related to Marine Aids to Navigation placed upon them in SOLAS Chapter V and that all coastal States can claim conformance with the relevant IALA Standards.

①

## ENLIGHTEN

raise the awareness of high-level decision makers of their international obligations relating to safety of navigation;

②

## EDUCATE

provide a suite of relevant education and training opportunities for as many as possible; and

③

## ENGAGE

pursue long-term capacity building activities with coastal States and provide advice on how to overcome challenges.

# The Academy Team



**Omar Frits Eriksson**

**Dean  
IALA World-Wide Academy**



**Gerardine Delanoye**

**Capacity Building and Resources Manager  
IALA World-Wide Academy**



**Kevin Gregory**

**Education and Development Manager  
IALA World-Wide Academy**



# IMSAS Audit Summary – October 2021

## Finding

The State had not taken necessary measures to ensure the availability and maintenance of AtoN in the waters under the jurisdiction of the State. No assessment had been made on the requirement of AtoN based on volume of traffic and degree of risk (SOLAS 1974, regulation V/13; ILL Code, paragraph 47).

## Root cause

There was a lack of financial resources and there was no clear responsibility assigned with regard to the establishment and maintenance of Aids to Navigation (AtoN) services.

## Corrective action

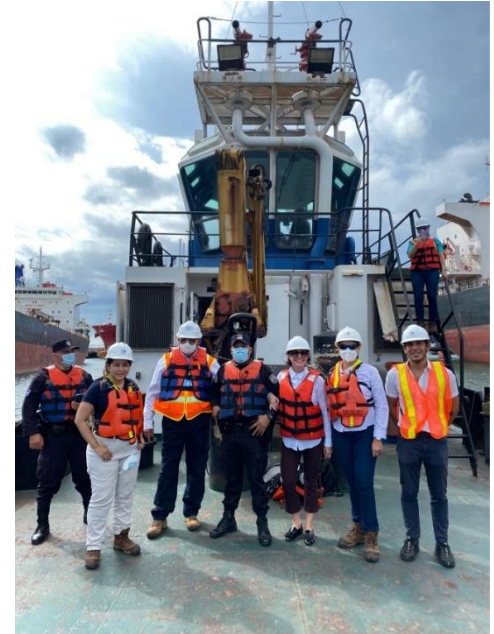
The responsible entity will implement the following actions:

1. conduct a comprehensive risk assessment to determine the requirements for all AtoN;
2. based on the aforementioned assessment, install AtoN;
3. create a database to ensure the service and maintenance of AtoN; and
4. establish an AtoN maintenance fund to provide required financial resources.





# Assisting coastal States worldwide



**Risk Assessment,  
AtoN planning,  
AtoN Governance and policy,  
Procurement training.**



# IALA technical webinar series – IALA YouTube

**Mooring Components**  
**IALA Recommendation E-107; Guideline 1066**

Diagram illustrating the components of a mooring system for an offshore structure, following IALA Recommendation E-107; Guideline 1066. The components are labeled as follows:

- 1. bridle or tail chain
- 2. riding chain
- 3. thrash
- 4. ground chain
- shackles
- swivel
- shackle
- sinker

28/01/2021 Level 1 AtoN Manager Distance Learning Course L1.1 copyright © IALA 2018 6

+79 SB H +1 310 480 7765 MAS



# Education and training opportunities

- Vessel Traffic Services
- Aids to Navigation – Management
- Aids to Navigation – Technical





# “HOW TO” PROCUREMENT COURSE: WRITING SPECIFICATIONS

Example for AtoN:

**Leading lights (assuming location is ready for light placement)**

| Item   | Approximate cost in US dollars 2020                          |
|--|--|
| Leading lights up to 23 NM x 2   | 5,500  |
| Solar power supply   | 4,700  |
| Light towers (if no existing infrastructure, very site specific e.g., \$25k/tower) | 50,000   |
| Installation   | 10,000   |
| Transport/delivery/insurance   | 5,000  |
| <b>Total capital/set up cost</b>   | <b>75,200</b>  |
| <b>Maintenance (2 x per year average, per light)</b>                               | <b>4,000/ year</b> (over 15 years (not discounted) = 60,000) |

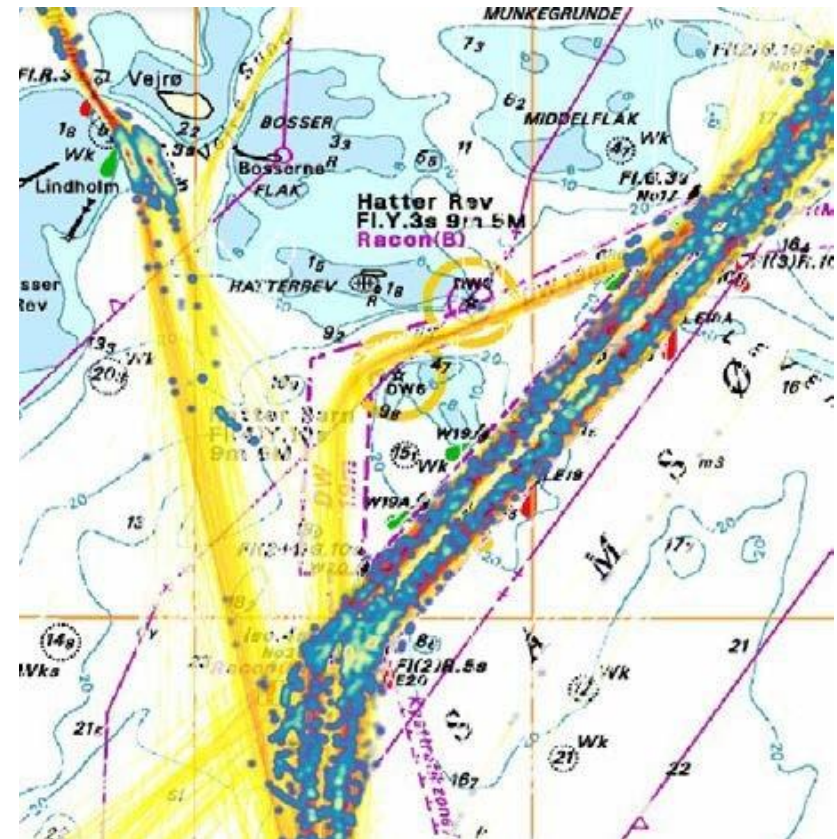
Sponsorship may be available for a few SWPHC participants



# Risk management training

The IALA Risk Management Toolbox training is configured for online learning and adopts a new modular approach.

- Concepts of risk management
- Risk assessment using SIRA
- Risk assessment using IWRAP Mk2
- Advanced IWRAP MK2 modelling
- Conducting a PAWSA workshop





645-  
RESOLUTION A.857(20) adopted on 27 November 1997  
GUIDELINES FOR VESSEL TRAFFIC SERVICES

INTERNATIONAL MARITIME ORGANIZATION

4 ALBERT EMBANKMENT  
LONDON SE1 7SR

Telephone: 0171-735 7611  
Fax: 0171-587 3210  
Telex: 23588 IMOLDN G



IMO

**E**

A 20/Res.857  
3 December 1997  
Original: ENGLISH

ASSEMBLY  
20th session  
Agenda item 9

NOT TO BE REMOVED  
FROM  
THE IMO LIBRARY

RESOLUTION A.857(20)  
adopted on 27 November 1997

GUIDELINES FOR VESSEL TRAFFIC SERVICES

THE ASSEMBLY,

RECALLING Article 15(j) of the Convention on the International Maritime Organization concerning the functions of the Assembly in relation to regulations and guidelines concerning maritime safety and the prevention and control of marine pollution from ships,



# Transition to an Inter-Governmental Organization

- Convention was signed by the French Government (depository) on 27<sup>th</sup> January 2021
- Open for signature for 12 Months
- 51 signatures by now.
- Now 5 States have ratified the IALA Convention
- When 30 States have **ratified** the convention, IALA transforms into an **Inter-Governmental Organization**







QUESTIONS?

MAIL, TEXT OR CALL ME

[gerardine.delanoye@iala-aism.org](mailto:gerardine.delanoye@iala-aism.org)

+ 33 676 45 50 38