

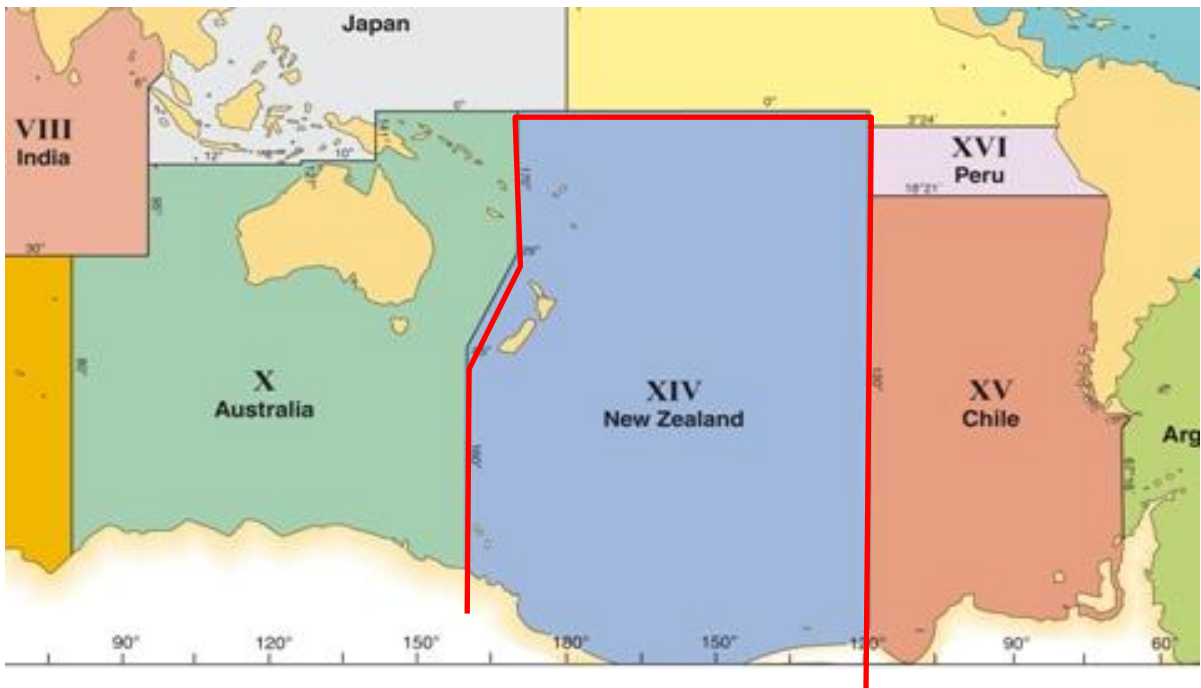
## MSI in NAVAREA XIV

Submitted by New Zealand/NAVAREA XIV Coordinator

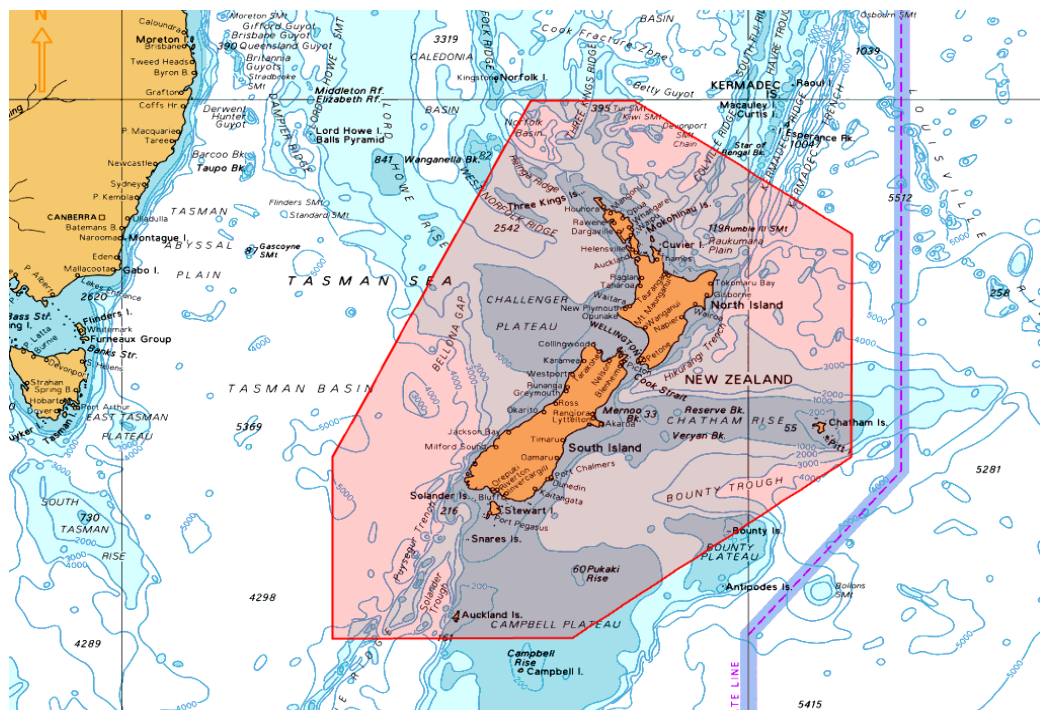
### 1. Background:

The limits of NAVAREA XIV are given as:

69° 37'S, 160° 00'E (Antarctic coast) to  
45° 00'S, 160° 00'E to  
29° 00'S, 170° 00'E to  
00° 00'N, 170° 00'E to  
00° 00'N, 120° 00'W to  
73° 50'S, 120° 00'W (Antarctic coast)

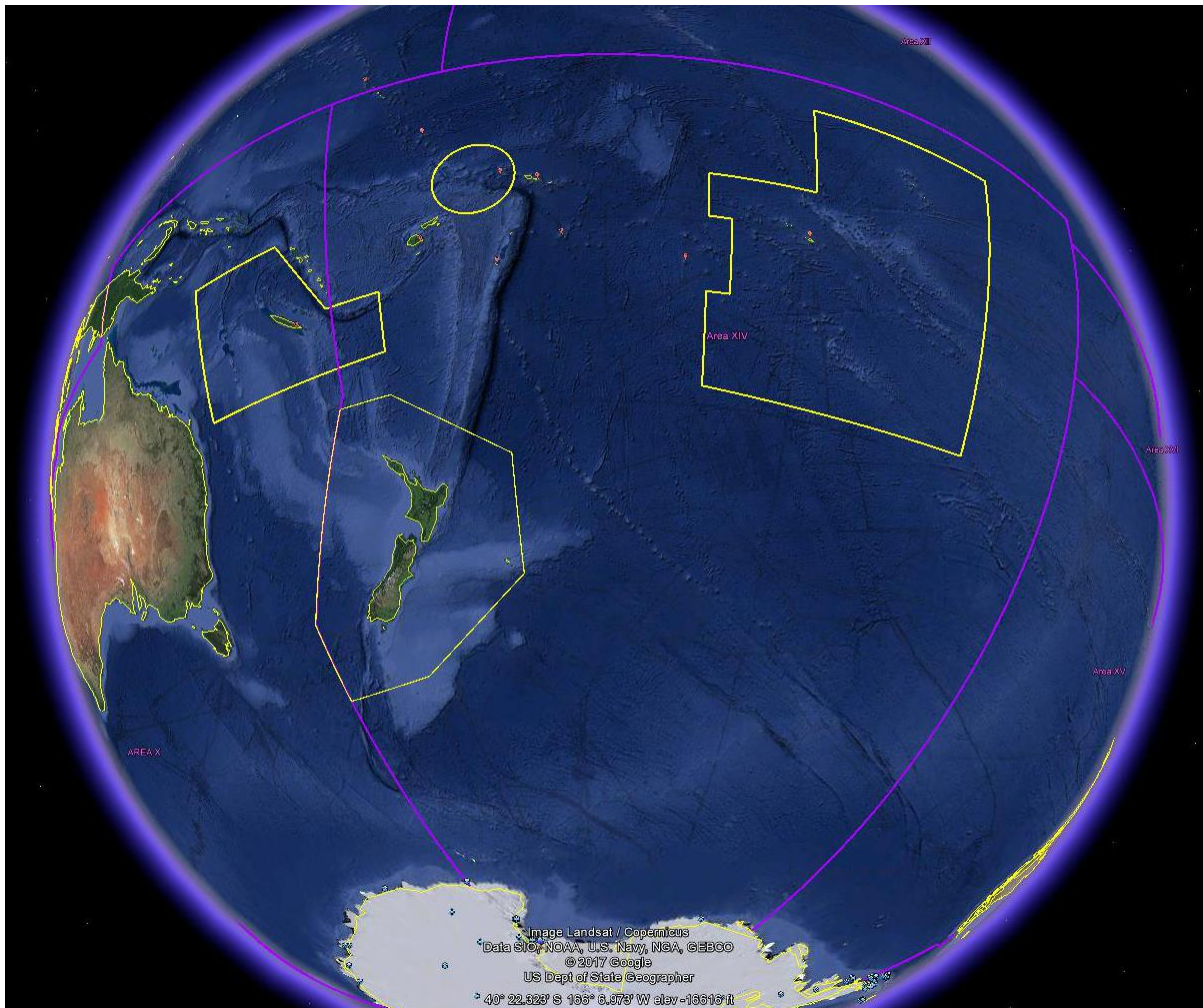


New Zealand Coastal Warning Area 'Z' is depicted below.



## Template for the NAVAREA Co-ordinator's Report to Regional Hydrographic Commission Meetings

NAVAREA XIV with all Coastal Warning Areas depicted below.



NAVAREA XIV and New Zealand Coastal Warnings are broadcast via:

**Taupo Maritime Radio ZLM (Radio Telephony)** at the first scheduled time following receipt and then at the scheduled times as per ALRS Vol 3(2) whilst the warnings are in force or until they have been promulgated by other means; and

### **EGC as follows:**

**Inmarsat - SafetyNET II service** via the Pacific Ocean Region (POR) and Atlantic Ocean Region – West (AOR-W) satellites, through the Inmarsat Maritime Safety Servers for broadcast to Inmarsat C and Mini C via the Network Control Station (NCS) and to Fleet Safety via the Broadband Global Area Network Satellite Access Station (BGAN SAS). Warnings broadcast on receipt and scheduled at 0900 and 2100 UTC.

**Iridium – SafetyCast service** via the Iridium Gateway Server through all satellites covering the New Zealand areas of responsibility.

## Template for the NAVAREA Co-ordinator's Report to Regional Hydrographic Commission Meetings

Operational Points of Contact for National Co-ordinators within the NAVAREA

COUNTRY	INSTITUTION	TELEPHONE	FACSIMILE	EMAIL
Cook Islands	Ministry of Transport	+682 57233		<a href="mailto:peter.graham@cookislands.gov.ck">peter.graham@cookislands.gov.ck</a>
French Polynesia	JRCC Tahiti	+689 405 41616	+689 404 23915	<a href="mailto:contact@jrcc.pf">contact@jrcc.pf</a>
Fiji	Maritime Safety Authority Fiji	+679 331 5266	+679 331 3127	<a href="mailto:msi@msaf.com.fj">msi@msaf.com.fj</a> <a href="mailto:skumar@msaf.com.fj">skumar@msaf.com.fj</a>
Kiribati	Ministry of Information, Communications, Transport & Tourism Development	(W) +686 74026003 Ext 232 (M) +686 73022727		<a href="mailto:eritaia.tauro@mcttd.gov.ki">eritaia.tauro@mcttd.gov.ki</a>
New Caledonia	MRCC New Caledonia	+687 292121		<a href="mailto:operations@mrcc.nc">operations@mrcc.nc</a>
New Zealand	RCCNZ	+64 4 577 8030	+64 4 577 8038	<a href="mailto:rccnz@maritimenz.govt.nz">rccnz@maritimenz.govt.nz</a>
Niue	Ministry of Transport	+683 888 6983		<a href="mailto:lynsey.talagi@mail.gov.nu">lynsey.talagi@mail.gov.nu</a>
Samoa	Ministry of Works, Transport & Infrastructure	(W) +685 22141 (M) +685 761 1225	+685 22671	<a href="mailto:hoe.viali@mwti.gov.ws">hoe.viali@mwti.gov.ws</a> <a href="mailto:makerita.atonio@mwti.gov.ws">makerita.atonio@mwti.gov.ws</a> <a href="mailto:sonny.brown@mwti.gov.ws">sonny.brown@mwti.gov.ws</a> <a href="mailto:ioane.efeso@mwti.gov.ws">ioane.efeso@mwti.gov.ws</a>
Tonga, Kingdom of	Ministry of Infrastructure, Marine & Ports Division	(W) +676 22 555	+676 42 467	<a href="mailto:sioeli.fifita@moi.gov.to">sioeli.fifita@moi.gov.to</a> <a href="mailto:marineport@moi.gov.to">marineport@moi.gov.to</a>
Tuvalu		+688 20055		<a href="mailto:taasi.pittoi@gmail.com">taasi.pittoi@gmail.com</a>
Wallis & Futuna	MRCC New Caledonia	+687 292121		<a href="mailto:operations@mrcc.nc">operations@mrcc.nc</a>

### 2. Comments:

The NAVAREA XIV Coordinator six monthly communications checks with the nine National Coordinators (outside of New Zealand) continue, and this has proven to be an effective method to ensure contact details are correct.

### NAVAREA XIV EGC Messages

2019	2020	2021
161	225	232

Subjects of NAVAREA XIV Warnings included casualties to AtoNs, drifting hazards, wrecks located, military exercises, pipe and cable laying operations, rocket launching and space debris, tsunami threats, data collecting buoys, malfunction of shore-based MSI services, declaration of operational capability for Iridium GMDSS and Met Service Radio Fax outage. 45 NAVAREA warnings issued for a NIWA DART buoy adrift for approximately 6 months.

## Template for the NAVAREA Co-ordinator's Report to Regional Hydrographic Commission Meetings

### MSI Received from Coastal States within NAVAREA XIV

Coastal State/Country	Number of MSI messages	Topics/Subjects of messages	MSI Courses Attended
Cook Islands	0		2010, 2014, 2016, 2018
Fiji	33	AtoNs, Cable laying ops, Pipeline installations, Wrecks, Tropical cyclone damage, Towing of large floating dock	2010, 2014, 2016, 2018
French Polynesia	90	Military exercises, Space debris, Drifting hazards, Towing operations and AtoNs	2010, 2014, 2016, 2018
New Caledonia	14	Military exercises, Drifting hazards and SAR operation	2010, 2014, 2016, 2018
Niue	1	AtoNs	2016, 2018
Samoa	1	Data collecting buoys	2016, 2018
Tonga	2	Military exercises	2010, 2014, 2016, 2018
Tuvalu	0		2016, 2018
Wallis & Futuna	0		Covered by New Caledonia
Kiribati	0*		2016, 2018

\*Kiribati lies mostly within NAVAREA XI so MSI will likely be sent directly to the NAVAREA XI Coordinator

### 3. National reports

An email was sent to the NAVAREA XIV National Coordinators informing them that, following discussions with the SWPHC and for consistency with other Regional Hydrographic Commission (RHC) areas, it was agreed that National Coordinators within the SWPHC would submit their MSI Self Assessments at Annex C of their National Reports.

Noting that no MSI had been received from Cook Islands or Tuvalu, in December 2021, the NAVAREA XIV Coordinator sent a courtesy email to those MSI contacts to check if there were hazards to navigation that required only local broadcasts, or if there were no navigational hazards during the year. The Cook Islands Director of Maritime advised there had been nothing of significance to report.

### 4. NAVTEX Coverage:

N/A

### 5. Operational Issues:

New Recognised GMDSS Mobile Satellite Service Providers

In February 2021 New Zealand declared to IMO all GMDSS services (MET, NAV and SAR) "Operational" via all recognized mobile satellite services.

### National Coordinators

As per National Coordinator reports.

## Template for the NAVAREA Co-ordinator's Report to Regional Hydrographic Commission Meetings

### 6. Capacity Building:

The global COVID-19 pandemic has significantly limited the opportunities for physical meetings and workshops. Noting this, and in liaison with the SWPHC Capacity Building Coordinator, as part of our November 2020 communications checks the NAVAREA XIV Coordinator offered targeted remote training (telephone/video conference etc) to any National Coordinators who identified specific training needs. No training gaps were identified but this continues to be an option.

### 7. Other Activities:

The NAVAREA XIV Coordinator attends meetings of the WWNWS SC, EGC API WG, IHO DRWG, S-124 PT, IMO EGC Coordinating Panel, NCSR, MSC and MSI&SAR CG. During 2021, all participation at these meetings was via remote video conferencing.

### 8. NAVAREA Website:

NAVAREA XIV warnings in force: [www.maritimenz.govt.nz/navarea](http://www.maritimenz.govt.nz/navarea)

During 2021, the NAVAREA XIV web page received 26,414 page views.

The NAVAREA XIV website is updated in near-real time. The date and time of the last update is displayed on the web page.

### 9. NAVAREA Contact Information:

NAVAREA XIV Coordinator  
Maritime New Zealand  
RCCNZ  
41 Percy Cameron Street, Avalon Studios Level 1  
PO Box 30050  
LOWER HUTT 5040  
New Zealand  
Tel: +64 4 577 8030 (24 hours)  
FAX: +64 4 577 8038 (24 hours)  
E-mail [rccnz@maritimenz.govt.nz](mailto:rccnz@maritimenz.govt.nz) (24 hours)  
Website: <http://www.maritimenz.govt.nz/navarea>

### 10. Actions requested:

SWPHC to note the information provided.

### 11. Synopsis:

This report highlights the MSI activities for the year 2021, significantly New Zealand having declared to IMO all GMDSS services (MET, NAV and SAR) "Operational" via all recognized mobile satellite services.

New Zealand is actively involved with a number of IMO and IHO Sub-Committees and Working Groups, and capacity building in the SWP region for MSI, maritime safety and SAR through the Pacific Community (SPC) and PMSP. The NAVAREA XIV Coordinator is regularly engaging with the National Coordinators in NAVAREA XIV in an effort to improve communications and ensure contact details are correct.